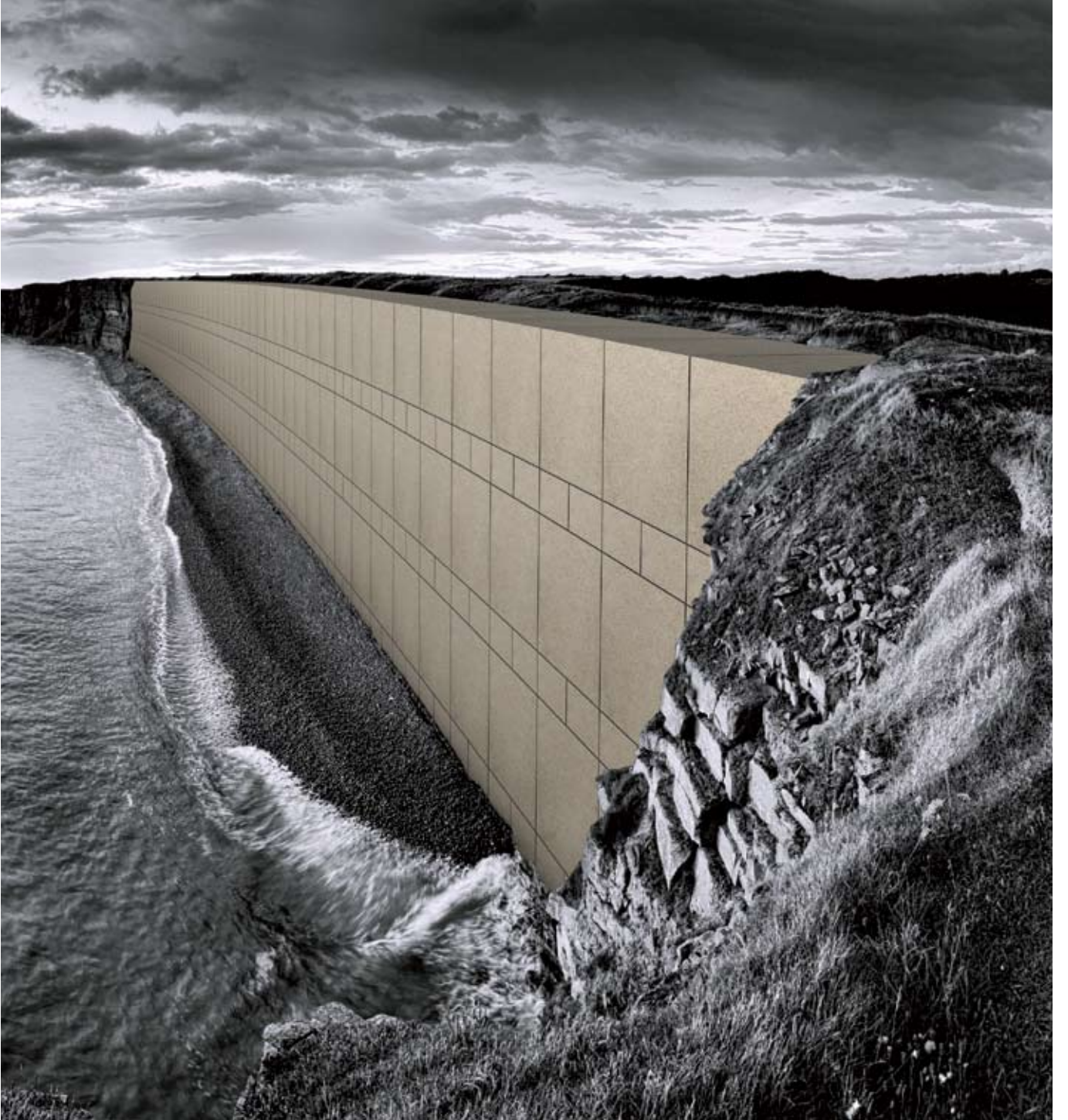


VitrA

Dış Cephe
External Cladding



İçindekiler

Dış Cephe Giydirmeye Sistemleri
External Cladding Systems
8-11

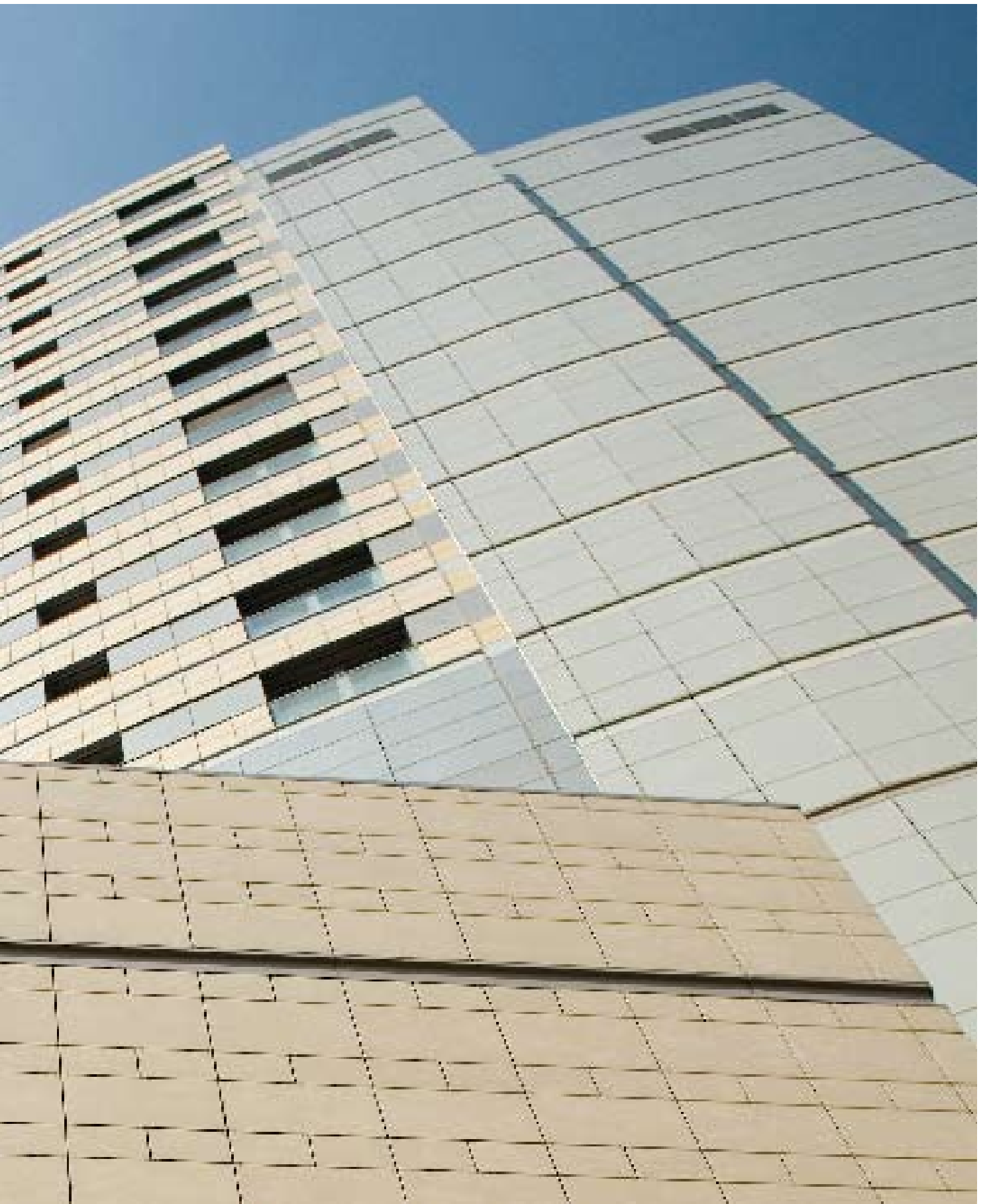
Ürünler
Products
12-33

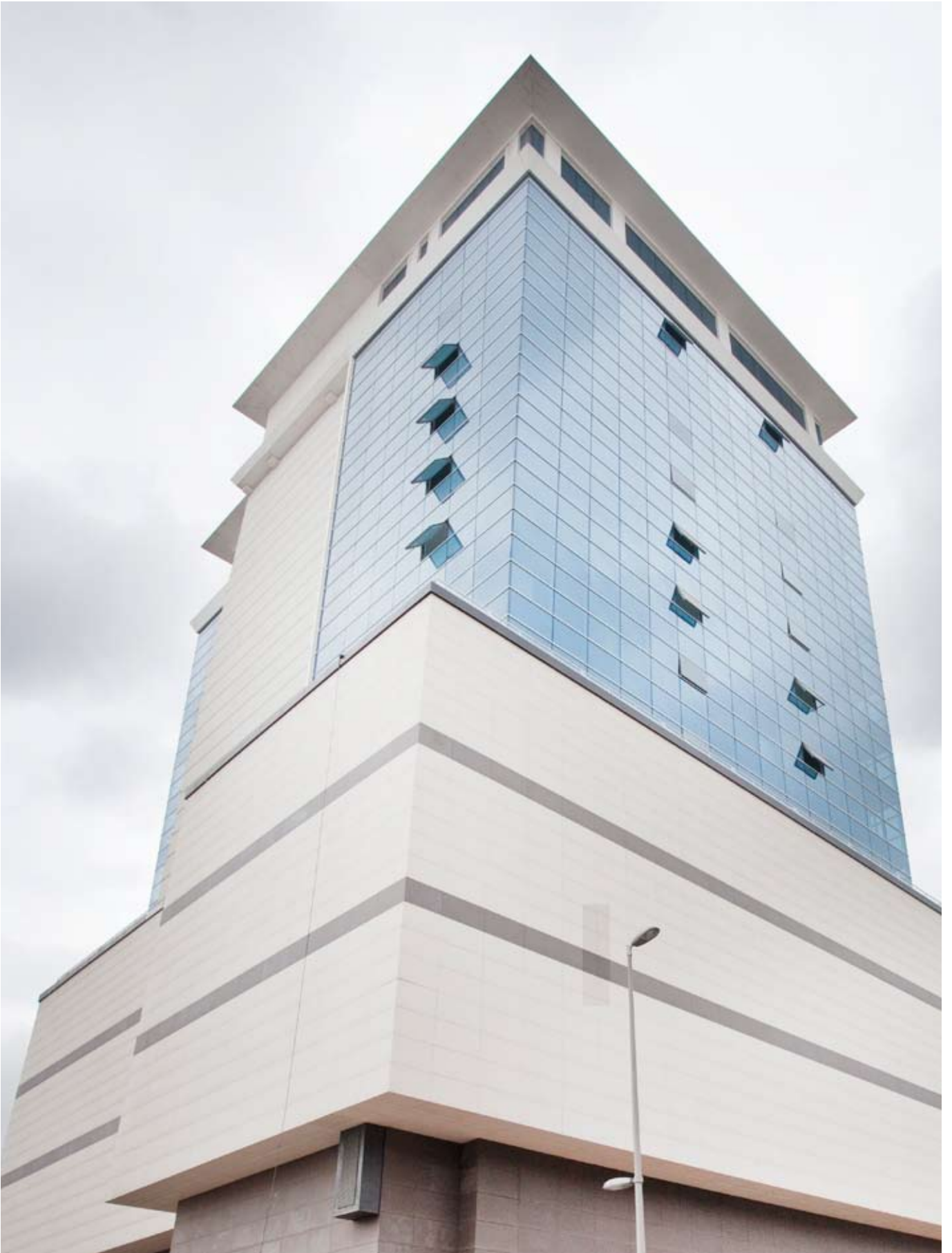
Teknik Bilgiler
Technical Information
34-43

Referanslar
References
44-49



Kanyon Project, İstanbul, Turkey





ES Kule AVM, İstanbul, Turkey

VitrA ile kaplanan yüzeyler yeni bir kişilik kazanıyor.

Binalara kişilik, stil ve ifadelerini dış görünüşleri verir. Bu noktada porselen, diğer bütün malzemelerden farklı olarak sıradışı özellikleri ile kendini kabul ettiriyor. Hava şartlarına ve yıllara karşı koyuşu, estetik oluşu, enerji tasarrufuna katkısı ve bakım kolaylığı ile...

Dış cephe kaplamalarında, özellikle giydirme cephe sistemlerinde, porselenin üstünlüğünü dikkate alan VitrA'nın bünyesinde bu sektöre yönelik uzman bir ekip bulunuyor; ürün yelpazesinde bu amaca uygun olarak

üretilen 30x60, 60x60, 45x90, 60x90 ve 60x120 cm ebatlarındaki porselen karolar ile giydirme cephe sistemleri konusunda mimar ve mühendislere proje ve uygulama hizmetleri sunuyor.

VitrA porselen seramikleri, giydirme cephe sistemlerinin bütün avantajları ile beraber kendi üstün kalitesi ve estetik görünümünü cephelere yansıtarak benzersiz tasarımları hayata geçiriyor.

Surfaces gain a new character with VitrA.

The exterior of a building expresses its character. At this point porcelain is a unique material to be used for external cladding. It is waterproof, resisting sub zero temperatures, wind and rain for years, energy saving and easy to care.

Taking the acceptance and use of porcelain for external claddings into consideration, VitrA has an expert in-house team. With its porcelain tiles specially produced for cladding systems

in sizes 30x60, 60x60, 45x90, 60x90 and 60x120 cm VitrA offers a comprehensive package of project and application facilities for architects and engineers.

The high quality and design of VitrA porcelain and its technical properties make it an ideal material for this purpose.

VitrA schafft Fassaden mit Charakter.

Fassaden spiegeln den Charakter von Gebäuden wider. Für die Fassadenverkleidung bietet Feinsteinzeug einzigartige Vorteile: Das Material ist wasserfest, frostbeständig, energiesparend und pflegeleicht.

In seinem speziellen Feinsteinzeug-Sortiment für Fassadensysteme bietet VitrA verschiedene Fliesen in den Formaten 30x60, 60x60, 45x90, 60x90 und 60x120 cm an – ein komplettes Programm von Projektdienst mit

individuellen Gestaltungsmöglichkeiten für Architekten und Ingenieure.

VitrA Feinsteinzeug eignet sich – dank hoher Qualität, ansprechendem Design und technischen Eigenschaften – hervorragend für die Verkleidung von Fassadensystemen. Unter Berücksichtigung der zunehmenden Verwendung von Feinsteinzeug für Außenfassaden hat VitrA ein in-house-Team von Experten gegründet.

Les surfaces acquièrent un nouveau caractère avec VitrA.

L'extérieur d'un bâtiment exprime son caractère. Pour cela, le grès cérame est un matériaux unique à utiliser pour le revêtement extérieur. Il est imperméable, ingélif, il résiste aux intempéries et est facile d'entretien.

Considérant la supériorité et les avantages de l'utilisation du grès cérame, fort de son expérience, VitrA maîtrise parfaitement la technologie de ce matériaux. Avec sa gamme de carrelages produits tout particulièrement pour des systèmes de

revêtement dans les dimensions de 30x60, 60x60, 45x90, 60x90 et 60x120 cm, VitrA offre un service complet à la base de projets et applications d'architectes ou ingénieurs.

La haute qualité, l'aspect esthétique et les qualifications techniques du grès cérame VitrA, font de celle-ci un matériaux idéal pour les revêtements extérieurs.

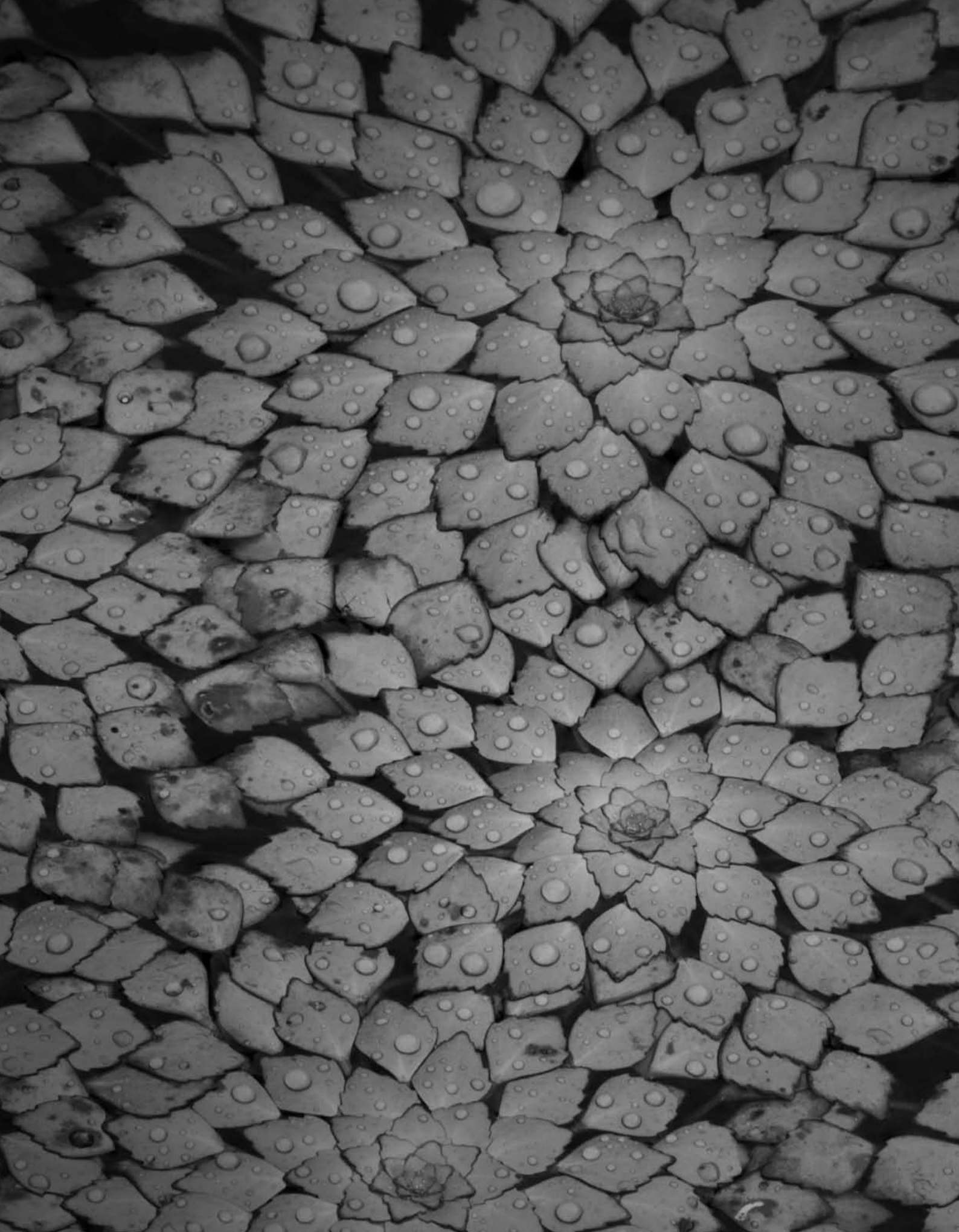
Поверхность приобретает новый образ с VitrA.


Внешний вид здания отображает свой характер. В этом вопросе фарфор есть уникальный материал для использования в наружной облицовке. Он водонепроницаемый, стойкий к низким температурам, ветру и дождю годами, энергосбережительный и легкий в уходе.

Принимая одобрение от клиентов в использовании фарфора для наружной облицовки,

VitrA создала команду экспертов для этих целей. С ее фарфоровой плиткой, которая изготовленная специально для облицовочных систем в размерах 30x60, 60x60, 45x90, 60x90, и 60x120 см. VitrA предлагает полный пакет услуг по проекту и применению для архитекторов и инженеров.

Высокое качество и дизайн фарфорового продукта VitrA и его технические показатели дают возможность достижения уникального эстетического результата.





Sistemler
Systems

8-11

Dış Cephe Giydirme Sistemleri External Cladding Systems

Giydirme cephe sistemleri temel olarak binanın dış kabuğu ile sistemin dış yüzeyi arasında bir boşluk bırakma esasına dayanır ve özellikle termo - akustik yalıtım konularında etkili olup çeşitli fonksiyonel avantajlar sunar. Giydirme sistemi yeni binaların cephelerinde olduğu kadar eski binaların da cephelerinde, cephenin bütün fiziksel yapı ve tasarım gerekliliklerini karşılayan bir sistemdir.

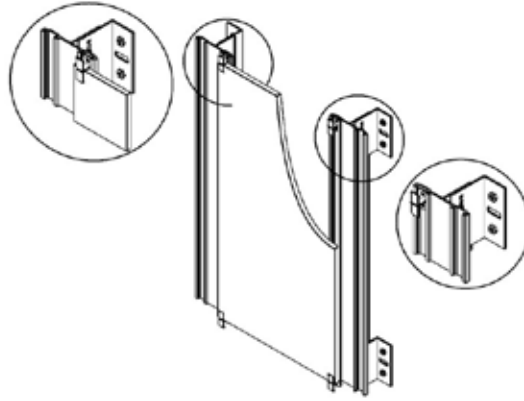
Surface cladding systems by leaving a gap between the wall and porcelain tile provide effective thermal and acoustic insulation and offer plenty of functional advantages. The system can be applied to old buildings as well as new ones.

Fassadenbekleidungssysteme stützen sich in der Regel auf das Prinzip eines Freiraums zwischen der Gebäudewand und der Außenfläche des Systems und bieten eine effiziente thermo-akustische Isolierung und verschiedene funktionelle Vorteile an. Fassadenbekleidungen stellen ein System dar, das sowohl bei den Fassaden neuer als auch alter Gebäude die Anforderungen bezüglich der physischen Struktur sowie des Designs erfüllt.

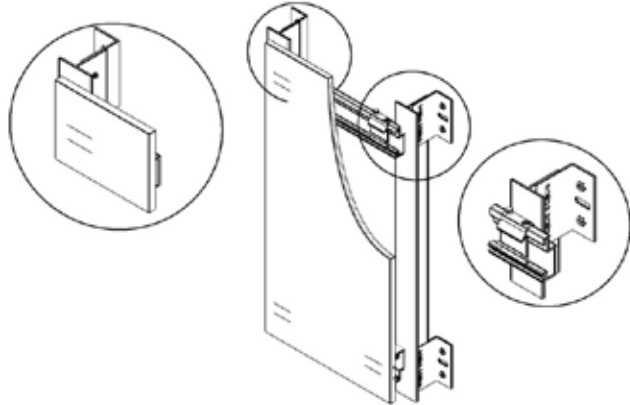
Les systèmes de revêtement de façade consistent essentiellement à laisser un espace entre la couverture externe du bâtiment et la surface extérieure du système et présentent de divers avantages fonctionnels étant efficaces concernant l'isolation thermo-acoustique. Le système de revêtement est un système répondant à toutes les exigences de structure physique et de conception de façade tant pour les façades des nouveaux bâtiments que pour celles des anciens bâtiments.

Системы внешней облицовки, оставляя зазор между стеной и керамогранитом, обеспечивают эффективную термо- и звукоизоляцию и предлагают множество функциональных преимуществ. Система может быть применена для облицовки как старых, так и новых зданий.

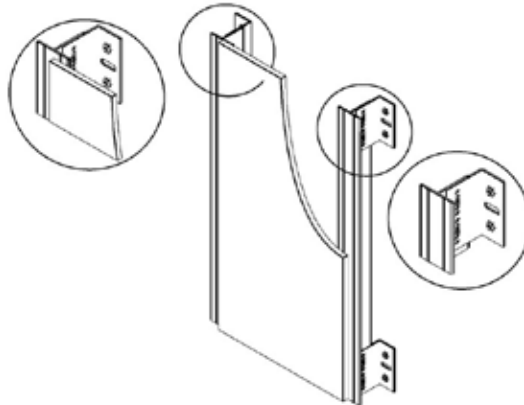
Görünür bağlantı sistemi
Visible fixing system



Gizli bağlantı sistemi
Invisible fixing system



Yapıştırma sistemi
Bonding system



Binaya dışarıdan gelebilecek güneş, yağış ya da rüzgar etkileri sistemin dış yüzeyi tarafından engellenip boşluktaki hava hareketi tarafından uzaklaştırılır.



The impact of sunlight, rain, wind etc is blocked by the external surface of the system and removed by the air circulation in the void.

Sistemin dış yüzeyi ile binanın dış kabuğu arasında kalan hava boşluğu her türlü hava hareketine imkan vererek çeşitli açılardan binayı ve kullanıcıyı rahatlatır.



The void between the external wall of the building and the cladding allows air circulation which improves the comfort with in the building.

Dışarıdan etkiyen ısının bir bölümü sistemin dış yüzeyi, bir bölümü hava boşluğu bir bölümü de içeriden dışarıya doğru oluşan ısı kaçıışı ile birlikte ısı yalıtımı tarafından engellenerek iç iklimlendirmede azami konfor ve enerji tasarrufu sağlanır. Dolayısıyla hem kullanım maliyetlerine hem de çevrenin korunmasına katkıda bulunur.



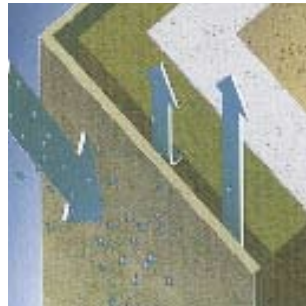
It reduces heat loss from the exterior, giving maximum internal comfort and energy saving in air conditioning. In reducing heat loss to the outside it also protects the environment.

Sistem ısı yalıtımını sağlarken aynı zamanda binanın nefes almasına imkan sağlar.



Not only does the system provide thermal isolation, but also it assists the respiration of the building.

Bina dış kabuğundan ve ısı yalıtımından geçen nem herhangi bir yoğunlaşmaya uğramadan hava boşluğuna ulaşır ve ortamda oluşan vantilasyon sayesinde hemen uzaklaştırılır.



Moisture which escapes through the external wall of the building does not condense but is dissipated by the air flow in the void.





Ürünler *Products*

12-33

Arkitekt Color

Yer & Duvar - Floor & Wall



M 30 x 60 cm / 12" x 24"
297 x 597 x 9 mm
EN14411 Bla

Ad/Kt	Pcs/Box	6
m ² /Kt	m ² /Box	1.08
kg/Kt	kg/Box	19.90
Kt/Plt	Box/Plt	40
m ² /Plt	m ² /Plt	43.20
kg/Plt	kg/Plt	796.00

					
RAL 9016 Mat/Matt K892234	RAL 7047 Mat/Matt K788166	RAL 000 15 00 Parlak/Glossy K892245	RAL 000 40 00 Mat/Matt K892256	RAL 000 45 00 Mat/Matt K892260	RAL 000 50 00 Mat/Matt K892271
					
RAL 000 55 00 Mat/Matt K892282	RAL 000 60 00 Mat/Matt K892293	RAL 000 65 00 Mat/Matt K892304	RAL 000 75 00 Mat/Matt K892315	RAL 000 80 00 Mat/Matt K892326	RAL 080 90 10 Mat/Matt K892330



M 60 x 60 cm / 24" x 24"
597 x 597 x 9 mm
EN14411 Bla

Ad/Kt	Pcs/Box	4
m ² /Kt	m ² /Box	1.44
kg/Kt	kg/Box	27.70
Kt/Plt	Box/Plt	30
m ² /Plt	m ² /Plt	43.20
kg/Plt	kg/Plt	831.00

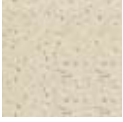
					
RAL 9016 Mat/Matt K790874	RAL 7047 Mat/Matt K798020	RAL 5002 Parlak/Glossy K813963	RAL 000 15 00 Parlak/Glossy K813753	RAL 000 40 00 Mat/Matt K892341	RAL 000 45 00 Mat/Matt K892352
					
RAL 000 55 00 Mat/Matt K813731	RAL 000 60 00 Mat/Matt K892374	RAL 000 65 00 Mat/Matt K892385	RAL 000 75 00 Mat/Matt K818351	RAL 000 80 00 Mat/Matt K892396	RAL 000 50 00 Mat/Matt K892363
					
RAL 080 90 10 Mat/Matt K838091					

Arkitekt Porcelain Dotti

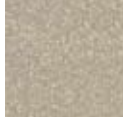


M 60 x 60 cm / 24" x 24"
597 x 597 x 9 mm (Mat/Matt)
592 x 592 x 8.5 mm (Parlak/Polished)
EN14411 Bla

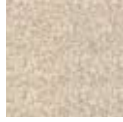
Ad/Kt	Pcs/Box	4	4
m ² /Kt	m ² /Box	1.44	1.44
kg/Kt	kg/Box	29.00	25.30
Kt/Plt	Box/Plt	30	30
m ² /Plt	m ² /Plt	43.20	43.20
kg/Plt	kg/Plt	870.00	759.00



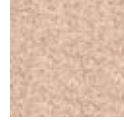
**Fildişi
Ivory**
Mat/Matt R9 K768542



Taupe
Mat/Matt R9 K768660
Parlak/Polished K768671



**Açık Bej
Light Beige**
Mat/Matt R9 K768682
Parlak/Polished K768693



**Açık Pembe
Light Pink**
Mat/Matt R9 K768564
Parlak/Polished K768575



**Taba
Tobacco**
Mat/Matt R9 K768586
Parlak/Polished K768590



**Açık Gri
Light Grey**
Mat/Matt R9 K768505
Parlak/Polished K768516



**Koyu Gri
Dark Grey**
Mat/Matt R9 K768520
Parlak/Polished K768531



M 30 x 60 cm / 12" x 24"
297 x 597 x 9 mm (Mat/Matt)
292 x 592 x 8.5 mm (Parlak/Polished)
EN14411 Bla

Ad/Kt	Pcs/Box	6	6
m ² /Kt	m ² /Box	1.08	1.08
kg/Kt	kg/Box	20.60	18.70
Kt/Plt	Box/Plt	40	40
m ² /Plt	m ² /Plt	43.20	43.20
kg/Plt	kg/Plt	824.00	748.00



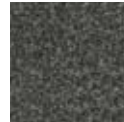
**Fildişi
Ivory**
Mat/Matt R9 K766146
Parlak/Polished K766150



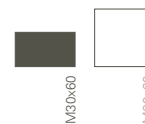
**Taba
Tobacco**
Mat/Matt R9 K768296



**Açık Gri
Light Grey**
Mat/Matt R9 K766124
Parlak/Polished K766135



**Koyu Gri
Dark Grey**
Mat/Matt R9 K768252
Parlak/Polished K768263



M 30 x 60 cm / 12" x 24"
 297 x 597 x 9 mm (Mat/Matt)
 292 x 592 x 8.5 mm (Parlak/Polished)
EN14411 Bla

Ad/Kt	Pcs/Box	6	6
m ² /Kt	m ² /Box	1.08	1.08
kg/Kt	kg/Box	20.60	18.70
Kt/Plt	Box/Plt	40	40
m ² /Plt	m ² /Plt	43.20	43.20
kg/Plt	kg/Plt	824.00	748.00



RAL 100 90 05
 Mat/Matt R9 K854864



RAL 090 90 10
 Mat/Matt R9 K783916
 Parlak/Polished K808495



RAL 095 90 10
 Mat/Matt R9 K843536
 Parlak/Polished K855763



RAL 070 80 10
 Mat/Matt R9 K766986
 Parlak/Polished K766990



RAL 090 60 10
 Mat/Matt R9 K893015



RAL 060 50 05
 Mat/Matt R9 K892525



RAL 050 40 10
 Mat/Matt R9 K892514



RAL 040 30 10
 Mat/Matt R9 K892503



RAL 160 60 15
 Mat/Matt R9 K892536



RAL 200 50 15
 Mat/Mat/Matt R9 K892540



RAL 240 40 10
 Mat/Matt R9 K892551



RAL 100 70 05
 Mat/Matt R9 K854875



RAL 000 55 00
 Mat/Matt R9 K767401
 Parlak/Polished K767412




RAL 000 40 00
 Mat/Matt R9 K768446
 Parlak/Polished K768450



RAL 000 15 00
 Mat/Matt R9 K892492

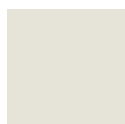


 M 60 x 60 cm / 24" x 24"
597 x 597 x 9 mm (Mat/Matt)
592 x 592 x 8.5 mm (Parlak/Polished)
EN14411 Bla

Ad/Kt	Pcs/Box	4	4
m ² /Kt	m ² /Box	1.44	1.44
kg/Kt	kg/Box	29.00	25.30
Kt/Plt	Box/Plt	30	30
m ² /Plt	m ² /Plt	43.20	43.20
kg/Plt	kg/Plt	870.00	759.00



RAL 090 90 10
Mat/Matt R9 K776495
Parlak/Polished K776506



RAL 095 90 10
Mat/Matt R9 K843540
Parlak/Polished K855774



RAL 070 80 10
Mat/Matt R9 K768704
Parlak/Polished K768715



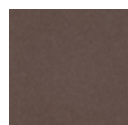
RAL 080 80 20
Mat/Matt R9 K770486
Parlak/Polished K770490



RAL 090 60 10
Mat/Matt R9 K893026



RAL 060 50 05
Mat/Matt R9 K892595



RAL 050 40 10
Mat/Matt R9 K892584



RAL 040 30 10
Mat/Matt R9 K892573



RAL 040 50 20
Mat/Matt R9 K768741
Parlak/Polished K768752



RAL 160 60 15
Mat/Matt R9 K892606



RAL 200 50 15
Mat/Mat/Matt R9 K892610



RAL 240 60 20
Mat/Mat/Matt R9 K768785
Parlak/Polished K768796



RAL 240 40 10
Mat/Matt R9 K892621



RAL 240 40 20
Mat/Matt R9 K796102
Parlak/Polished K797913



RAL 140 80 05
Mat/Matt R9 K827872
Parlak/Polished K827861



RAL 000 55 00
Mat/Matt R9 K768726
Parlak/Polished K768730



RAL 000 40 00
Mat/Matt R9 K768763
Parlak/Polished K768774




RAL 000 20 00
Mat/Matt R9 K780532
Parlak/Polished K780543



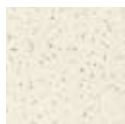
RAL 000 15 00
Mat/Matt R9 K892562

Arkitekt Porcelain Color Dot



 M 60 x 60 cm / 24" x 24"
597 x 597 x 9 mm (Mat/Matt)
592 x 592 x 8.5 mm (Parlak/Polished)
EN14411 Bla

Ad/Kt	Pcs/Box	4	4
m ² /Kt	m ² /Box	1.44	1.44
kg/Kt	kg/Box	28.00	25.30
Kt/Plt	Box/Plt	30	30
m ² /Plt	m ² /Plt	43.20	43.20
kg/Plt	kg/Plt	840.00	759.00



Gold
Mat/Matt R9 K802371
Parlak/Polished K802382



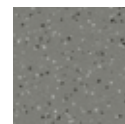
Bej
Sand Beige
Mat/Matt R9 K802463
Parlak/Polished K802474



Mink
Mat/Matt R9 K855085



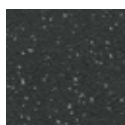
Cimento Gri
Cement Grey
Mat/Matt R9 K855063



Gri
Grey
Mat/Matt R9 K802673
Parlak/Polished K802684




Grafit Gri
Graphite Grey
Mat/Matt R9 K855074



Antrasit
Anthracite
Mat/Matt R9 K768601
Parlak/Polished K768612

Arkitekt Porcelain Maksi Dot

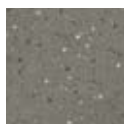


 M 60 x 60 cm / 24" x 24"
597 x 597 x 9 mm
EN14411 Bla

Ad/Kt	Pcs/Box	4
m ² /Kt	m ² /Box	1.44
kg/Kt	kg/Box	29.00
Kt/Plt	Box/Plt	30
m ² /Plt	m ² /Plt	43.20
kg/Plt	kg/Plt	870.00



Sand
Mat/Matt R9 K855225



Gri
Grey
Mat/Matt R9 K809825

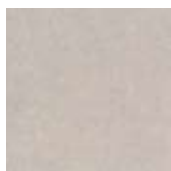
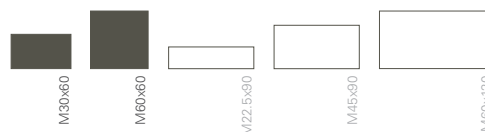


Grafit Gri
Graphite Grey
Mat/Matt R9 K855251



Levent 193, Istanbul, Turkey

Urban Life / colorbody porcelain Kinetic



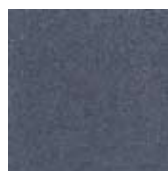
Krem - Cream



Vizon - Mink



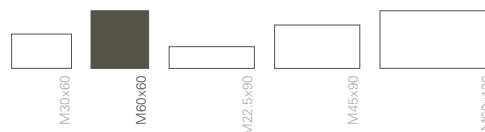
Gri - Grey



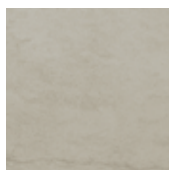
Antrasit - Anthracite

		M 60 x 60 cm (24 " x 24") 592 x 592 x 9 mm colorbody porcelain EN14411 Bla	M 30 x 60 cm (12 " x 24") 292 x 592 x 9 mm colorbody porcelain EN14411 Bla
Ad/Kt	Pcs/Box	4	6
m ² /Kt	m ² /Box	1.44	1.08
kg/Kt	kg/Box	27.70	19.90
Kt/Plt	Box/Plt	30	44
m ² /Plt	m ² /Plt	43.20	47.52
kg/Plt	kg/Plt	831.00	875.60
Krem - Cream			
Mat R - Matt R		K849395R	K848392R
Lappato R			K848392LPR
Vizon - Mink			
Mat R - Matt R		K849362R	K848355R
Lappato R			K848355LPR
Gri - Grey			
Mat R - Matt R		K849336R	K848311R
Lappato R			K848311LPR
Antrasit - Anthracite			
Mat R - Matt R		K849303R	K848274 R
Lappato R			K848274LPR

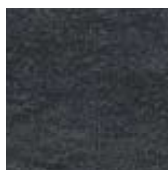
Urban Life / colorbody porcelain Damask Stone



Bej - Beige



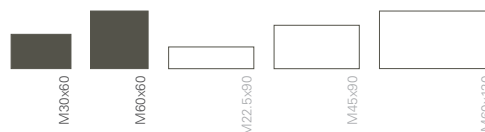
Gri - Grey



Siyah - Black

		M 60 x 60 cm (24 " x 24") 592 x 592 x 9 mm colorbody porcelain EN14411 Bla
Ad/Kt	Pcs/Box	4
m ² /Kt	m ² /Box	1.44
kg/Kt	kg/Box	27.25
Kt/Plt	Box/Plt	30
m ² /Plt	m ² /Plt	43.20
kg/Plt	kg/Plt	817.50
Bej - Beige		
Mat R - Matt R		K822902R
Gri - Grey		
Mat R - Matt R		K824534R
Siyah - Black		
Mat R - Matt R		K822891R

Urban Life / colorbody porcelain Cemento



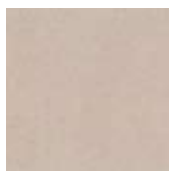
Krem - Cream



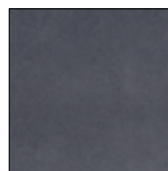
Vizon - Mink



Gri - Grey



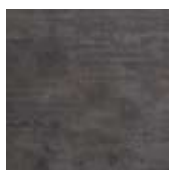
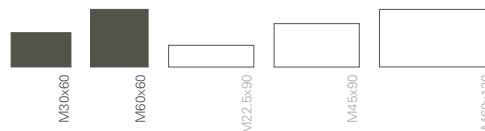
Moka - Mocha



Siyah - Black

	M 60 x 60 cm (24 " x 24") 592 x 592 x 9 mm colorbody porcelain ENI4411 Bla	M 30 x 60 cm (12 " x 24") 292 x 592 x 9 mm colorbody porcelain ENI4411 Bla
Ad/Kt	Pcs/Box	
m ² /Kt	m ² /Box	
kg/Kt	kg/Box	
Kt/Plt	Box/Plt	
m ² /Plt	m ² /Plt	
kg/Plt	kg/Plt	
Krem - Cream		
Mat R - Matt R	K849443R	K848576R
Lappato R		K848576LPR
Vizon - Mink		
Mat R - Matt R	K849432R	K848565R
Lappato R		K848565LPR
Gri - Grey		
Mat R - Matt R	K849421R	K848554R
Lappato R		K848554LPR
Moka - Mocha		
Mat R - Matt R	K849454R	K848580R
Lappato R		K848580LPR
Siyah - Black		
Mat R - Matt R	K850843R	K850810R
Lappato R		K850810LPR

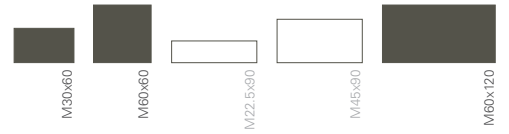
Urban Life / colorbody porcelain Loft



Bakır - Copper

	M 60 x 60 cm (24 " x 24") 592 x 592 x 9 mm colorbody porcelain ENI4411 Bla	M 30 x 60 cm (12 " x 24") 292 x 592 x 9 mm colorbody porcelain ENI4411 Bla
Ad/Kt	Pcs/Box	
m ² /Kt	m ² /Box	
kg/Kt	kg/Box	
Kt/Plt	Box/Plt	
m ² /Plt	m ² /Plt	
kg/Plt	kg/Plt	
Bakır - Copper		
Mat R - Matt R	K832664R	K832653R

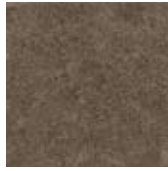
Urban Life / colorbody porcelain Ararat



Fildişi - Ivory



Bej - Beige



Moka - Mocha



Vizon - Mink



Gri - Grey



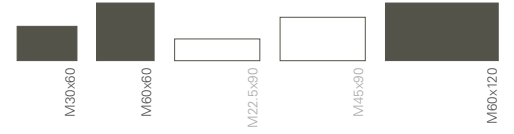
Koyu Gri - Dark Grey



Siyah - Black

	M 60 x 120 cm (24" x 48") 592 x 1192 x 11 mm colorbody porcelain ENI14411 Bla 3	M 60 x 60 cm (24" x 24") 592 x 592 x 11 mm colorbody porcelain ENI14411 Bla 4	M 30 x 60 cm (12" x 24") 292 x 592 x 11 mm colorbody porcelain ENI14411 Bla 6
Ad/Kt	Pcs/Box		
m ² /Kt	m ² /Box		
kg/Kt	kg/Box		
Kt/Plt	Box/Plt		
m ² /Plt	m ² /Plt		
kg/Plt	kg/Plt		
Fildişi - Ivory			
Mat R - Matt R	K844553R	K816450R	K812250R
Lappato R	K844553LPR	K816450LPR	K812250LPR
Hammered R	K874781R	K817231R	K812305R
Bej - Beige			
Mat R - Matt R	K844542R	K816446R	K812246R
Lappato R	K844542LPR	K816446LPR	K812246LPR
Hammered R		K817220R	K812294R
Moka - Mocha			
Mat R - Matt R	K844590R	K816505R	K812235R
Lappato R	K844590LPR	K816505LPR	K812235LPR
Hammered R		K817286R	K812331R
Vizon - Mink			
Mat R - Matt R	K844586R	K816483R	K812224R
Lappato R	K844586LPR	K816483LPR	K812224LPR
Hammered R	K874770R	K817264R	K812320R
Gri - Grey			
Mat R - Matt R	K844564R	K816461R	K812202R
Lappato R	K844564LPR	K816461LPR	K812202LPR
Hammered R		K817242R	K812272R
Koyu Gri - Dark Grey			
Mat R - Matt R	K844096R	K816494R	K812213R
Lappato R	K844096LPR	K816494LPR	K812213LPR
Hammered R		K817275R	K812283R
Siyah - Black			
Mat R - Matt R	K844575R	K816472R	K812261R
Lappato R	K844575LPR	K816472LPR	K812261LPR
Hammered R		K817253R	K812316R

Urban Life / colorbody porcelain Arsemia



Süper Beyaz - Super White



Sand



Moka - Mocha



Vizon - Mink



Açık Gri - Light Grey



Koyu Gri - Dark Grey



Siyah - Black

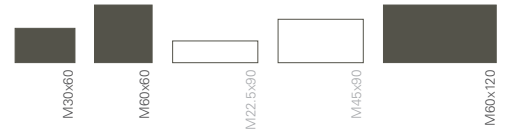


Süper Siyah - Super Black

	M 60 x 60 cm (24 " x 24") 592 x 592 x 9 mm colorbody porcelain EN14411 Bla	M 30 x 60 cm (12 " x 24") 292 x 592 x 9 mm colorbody porcelain EN14411 Bla
Ad/Kt	4	6
Pcs/Box	1.44	1.08
m ² /Kt	27.70	19.90
kg/Kt	30	40
Kt/Plt	43.20	43.20
m ² /Plt	831.00	796.00
kg/Plt		
Süper Beyaz - Super White		
Mat R - Matt R		K839546R
Lappato R	K839535LPR	K839546LPR
Sand		
Mat R - Matt R		K815654R
Lappato R	K817290LPR	K815654LPR
Moka - Mocha		
Mat R - Matt R		K815691R
Lappato R	K817334LPR	K815691LPR
Vizon - Mink		
Mat R - Matt R		K815680R
Lappato R	K817323LPR	K815680LPR
Açık Gri - Light Grey		
Mat R - Matt R		K815665R
Lappato R	K817301LPR	K815665LPR
Koyu Gri - Dark Grey		
Mat R - Matt R		K815676R
Lappato R	K817312LPR	K815676LPR
Siyah - Black		
Mat R - Matt R		K817802R
Lappato R	K817813LPR	K817802LPR
Süper Siyah - Super Black		
Mat R - Matt R		K839572R
Lappato R	K839561LPR	K839572LPR

Urban Life / colorbody porcelain

Arcadia



Fildişi - Ivory



Bej - Beige



Moka - Mocha



Açık Gri - Light Grey



Koyu Gri - Dark Grey

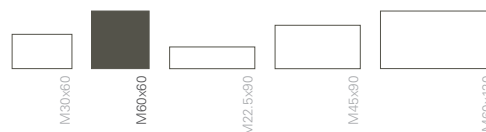


Siyah - Black

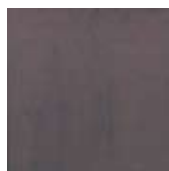
	M 60 x 120 cm (24 " x 48") 592 x 1192 x 10 mm colorbody porcelain EN14411 Bla	M 60 x 60 cm (24 " x 24") 592 x 592 x 9 mm colorbody porcelain EN14411 Bla	M 30 x 60 cm (12 " x 24") 292 x 592 x 9 mm colorbody porcelain EN14411 Bla
Ad/Kt	Pcs/Box		
m ² /Kt	m ² /Box		
kg/Kt	kg/Box		
Kt/Plt	Box/Plt		
m ² /Plt	m ² /Plt		
kg/Plt	kg/Plt		
	3	4	6
	2.16	1.44	1.08
	46.50	27.70	19.90
	13	30	40
	28.08	43.20	43.20
	604.50	831.00	796.00
Fildişi - Ivory			
Mat R - Matt R		K844015R	K832001R
Lappato R		K844015LPR	K832001LPR
Bej - Beige			
Mat R - Matt R		K841495R	K822961R
Lappato R		K841495LPR	K822961LPR
Moka - Mocha			
Mat R - Matt R		K844026R	K831990R
Lappato R		K844026LPR	K831990LPR
Açık Gri - Light Grey			
Mat R - Matt R	K870636R	K841484R	K822972R
Lappato LPR		K841484LPR	K822972LPR
Koyu Gri - Dark Grey			
Mat R - Matt R R9	K875746R	K841473R	K823145R
Lappato LPR		K841473LPR	K823145LPR
Siyah - Black			
Mat R - Matt R	K870640R	K841506R	K822950R
Lappato LPR		K841506LPR	K822950LPR

Urban Life / colorbody porcelain

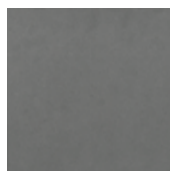
Next



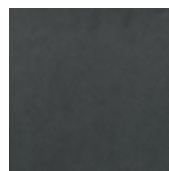
Krem - Cream



Moka - Mocha



Gri - Grey



Siyah - Black



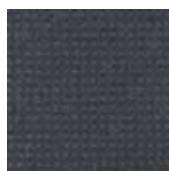
Relief
Krem - Cream



Relief
Moka - Mocha



Relief
Gri - Grey



Relief
Siyah - Black

Ad/Kt	Pcs/Box	M 60 x 60 cm
m ² /Kt	m ² /Box	(24 " x 24")
kg/Kt	kg/Box	592 x 592 x 9 mm
Kt/Plt	Box/Plt	colorbody porcelain
m ² /Plt	m ² /Plt	EN14411 Bla
kg/Plt	kg/Plt	4
		1,44
		27,70
		30
		43,20
		831,00

Krem - Cream

Mat R - Matt R	K879670R
R10A	K888336R
Relief R11B	K883215R

Moka - Mocha

Mat R - Matt R	K879681R
R10A	K888351R
Relief R11B	K883226R

Gri - Grey

Mat R - Matt R	K879666R
R10A	K888325R
Relief R11B	K883204R

Siyah - Black

Mat R - Matt R	K879655R
R10A	K888340R
Relief R11B	K883193R

Urban Life / colorbody porcelain Neo Quarzite



Beyaz - White



Krem - Cream



Moka - Mocha



Mavi - Blue



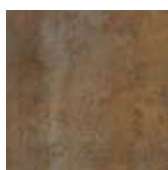
Antrasit

	M 45 x 90 cm (18 " x 36") 442 x 892 x 10 mm colorbody porcelain EN14411 Bla	M 60 x 60 cm (24 " x 24") 592 x 592 x 9 mm colorbody porcelain EN14411 Bla	M 30 x 60 cm (12 " x 24") 292 x 592 x 9 mm colorbody porcelain EN14411 Bla
Ad/Kt	Pcs/Box		
m ² /Kt	m ² /Box		
kg/Kt	kg/Box		
Kt/Plt	Box/Plt		
m ² /Plt	m ² /Plt		
kg/Plt	kg/Plt		
Beyaz - White			
Lappato R	K872563LPR	K873204LPR	K872515LPR
Krem - Cream			
Lappato R	K872574LPR	K873215LPR	K872526LPR
Moka - Mocha			
Lappato R	K872541LPR	K873182LPR	K872493LPR
Mavi - Blue			
Lappato R	K872552LPR	K873193LPR	K872504LPR
Antrasit			
Lappato R	K872585LPR	K873226LPR	K872530LPR

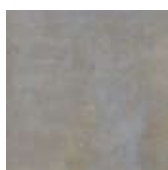
Urban Life / colorbody porcelain Oxidant



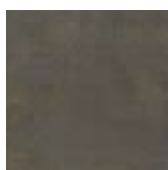
Bej - Beige



Bakir - Copper



Gri - Grey



Antrasit

	M 45 x 90 cm (18 " x 36") 442 x 892 x 10 mm colorbody porcelain EN14411 Bla	M 60 x 60 cm (24 " x 24") 592 x 592 x 9 mm colorbody porcelain EN14411 Bla	M 30 x 60 cm (12 " x 24") 292 x 592 x 9 mm colorbody porcelain EN14411 Bla
Ad/Kt	Pcs/Box		
m ² /Kt	m ² /Box		
kg/Kt	kg/Box		
Kt/Plt	Box/Plt		
m ² /Plt	m ² /Plt		
kg/Plt	kg/Plt		
Bej - Beige			
Mat R - Matt R	K866451R	K864701R	K850515R
Bakir - Copper			
Mat R - Matt R	K866473R	K864686R	K850493R
Gri - Grey			
Mat R - Matt R	K866462R	K864712R	K850526R
Antrasit			
Mat R - Matt R	K866484R	K864690R	K850504R

Urban Life / colorbody porcelain Galaxy



Krem - Cream



Moka - Mocha



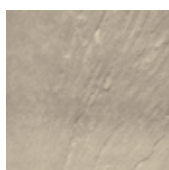
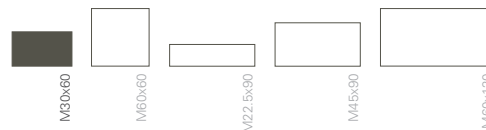
Silver Gri - Silver Grey



Antrasit

	M 45 x 90 cm (18 " x 36") 442 x 892 x 10 mm colorbody porcelain ENI4411 Bla	M 60 x 60 cm (24 " x 24") 592 x 592 x 9 mm colorbody porcelain ENI4411 Bla
Ad/Kt	Pcs/Box	
m ² /Kt	m ² /Box	
kg/Kt	kg/Box	
Kt/Plt	Box/Plt	
m ² /Plt	m ² /Plt	
kg/Plt	kg/Plt	
Krem - Cream		
Lappato R	K866790LPR	K866742LPR
Moka - Mocha		
Lappato R	K866801LPR	K866753LPR
Silver Gri - Silver Grey		
Lappato R	K866775LPR	K859204LPR
Antrasit		
Lappato R	K866786LPR	K859215LPR

Urban Life / colorbody porcelain Arduaz



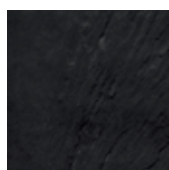
Krem - Cream



Bej - Beige



Gri - Grey



Siyah - Black

	M 30 x 60 cm (12 " x 24") 292 x 592 x 9 mm colorbody porcelain ENI4411 Bla
Ad/Kt	Pcs/Box
m ² /Kt	m ² /Box
kg/Kt	kg/Box
Kt/Plt	Box/Plt
m ² /Plt	m ² /Plt
kg/Plt	kg/Plt
Krem - Cream	
Mat R - Matt R	K863603R
Bej - Beige	
Mat R - Matt R	K863592R
Gri - Grey	
Mat R - Matt R	K863581R
Siyah - Black	
Mat R - Matt R	K862376R

Urban Life / colorbody porcelain Quarzite



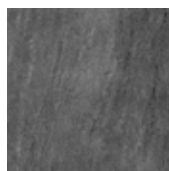
Bej - Beige



A. Gri - L. Grey



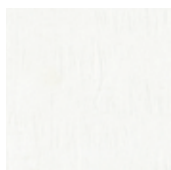
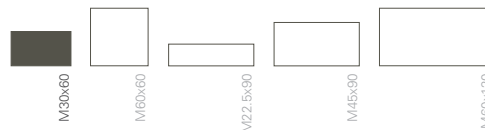
K. Gri - D. Grey



Antrasit

	M 45 x 90 cm (18 " x 36") 442 x 892 x 10 mm colorbody porcelain EN14411 Bla	M 30 x 60 cm (12 " x 24") 292 x 592 x 9 mm colorbody porcelain EN14411 Bla
Ad/Kt	Pcs/Box	
m ² /Kt	m ² /Box	
kg/Kt	kg/Box	
Kt/Plt	Box/Plt	
m ² /Plt	m ² /Plt	
kg/Plt	kg/Plt	
Bej - Beige		
Mat - Matt R	K878852R	K864421R
A. Gri - L. Grey		
Mat - Matt R		K864432R
K. Gri - D. Grey		
Mat - Matt R		K866812R
Antrasit		
Mat - Matt R	K878896R	K869015R

Urban Life / colorbody porcelain Siluette



Ultra Beyaz - Ultra White



Vizon - Mink



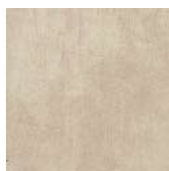
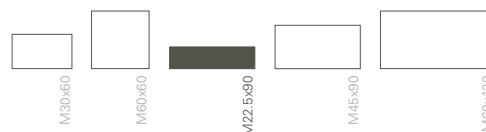
Grafit Gri - Graphite Grey



Karbon Siyah - Carbon Black

	M 30 x 60 cm (12 " x 24") 292 x 592 x 9 mm colorbody porcelain EN14411 Bla
Ad/Kt	Pcs/Box
m ² /Kt	m ² /Box
kg/Kt	kg/Box
Kt/Plt	Box/Plt
m ² /Plt	m ² /Plt
kg/Plt	kg/Plt
Ultra Beyaz - Ultra White	
Lappato R	K873963LPR
Vizon - Mink	
Lappato R	K873974LPR
Grafit Gri - Graphite Grey	
Lappato R	K873996LPR
Karbon Siyah - Carbon Black	
Lappato R	K873985LPR

Urban Life / colorbody porcelain Sherwood



Krem - Cream



Bej - Beige



Taba - Tobacco



Moka - Mocha

Ad/Kt Pcs/Box
m²/Kt m²/Box
kg/Kt kg/Box
Kt/Plt Box/Plt
m²/Plt m²/Plt
kg/Plt kg/Plt

M 22.5 x 90 cm
(10 " x 36")
217 x 892 x 9 mm
colorbody porcelain
EN14411 Bla
6
1.215
26.36
20
24.30
527.20

Krem - Cream

Mat - Matt R K873296R

Bej - Beige

Mat - Matt R K873300R

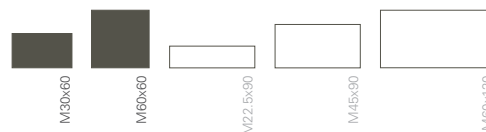
Taba - Tobacco

Mat - Matt R K873694R

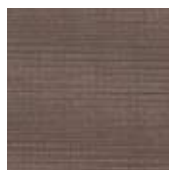
Moka - Mocha

Mat - Matt R K873285R

Urban Life / colorbody porcelain Vegas



Silver Gri - Silver Grey



Bronz - Bronze



K. Gri - D. Grey



Siyah - Black

Ad/Kt Pcs/Box
m²/Kt m²/Box
kg/Kt kg/Box
Kt/Plt Box/Plt
m²/Plt m²/Plt
kg/Plt kg/Plt

M 60 x 60 cm
(24 " x 24")
592 x 592 x 9 mm
colorbody porcelain
EN14411 Bla
4
1.44
27.60
30
43.20
828.00

M 30 x 60 cm
(12 " x 24")
292 x 592 x 9 mm
colorbody porcelain
EN14411 Bla
6
1.08
19.60
44
47.52
862.40

Silver Gri - Silver Grey

Mat R - Matt R K872423R

K872305R

Bronz - Bronze

Mat R - Matt R K872434R

K872316R

K. Gri - D. Grey

Mat R - Matt R K872412R

K872294R

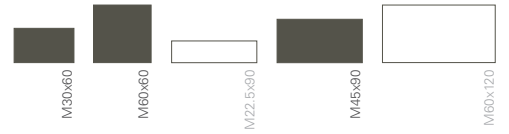
Siyah - Black

Mat R - Matt R K872445R

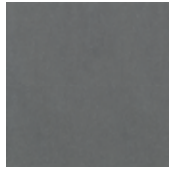
K872320R

Urban Life / colorbody porcelain

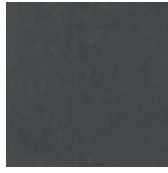
Etna



Kahve - Brown Natural



Gri - Grey

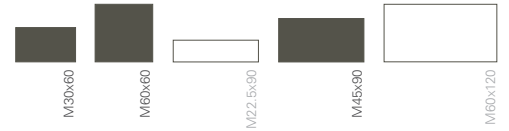


Antrasit

	M 45 x 90 cm (18 " x 36") 442 x 892 x 10 mm colorbody porcelain EN14411 Bla	M 60 x 60 cm (24 " x 24") 592 x 592 x 9 mm colorbody porcelain EN14411 Bla	M 30 x 60 cm (12 " x 24") 292 x 592 x 9 mm colorbody porcelain EN14411 Bla
Ad/Kt	Pcs/Box		
m ² /Kt	m ² /Box		
kg/Kt	kg/Box		
Kt/Plt	Box/Plt		
m ² /Plt	m ² /Plt		
kg/Plt	kg/Plt		
Kahve - Brown Natural			
Mat - Matt R	K883436R	K883462R	K884571R
Gri - Grey			
Mat - Matt R	K883425R	K883451R	K884560R
Antrasit			
Mat - Matt R	K883414R	K883440R	K884556R

Urban Life / colorbody porcelain

Valley



Beyaz - White



Bej - Beige



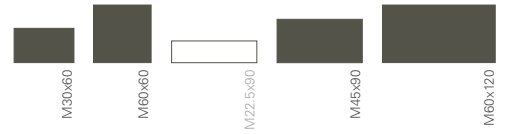
Açık Gri - Light Grey



Koyu Gri - Dark Grey

	M 45 x 90 cm (18 " x 36") 442 x 892 x 10 mm colorbody porcelain EN14411 Bla	M 60 x 60 cm (24 " x 24") 592 x 592 x 9 mm colorbody porcelain EN14411 Bla	M 30 x 60 cm (12 " x 24") 292 x 592 x 9 mm colorbody porcelain EN14411 Bla
Ad/Kt	Pcs/Box		
m ² /Kt	m ² /Box		
kg/Kt	kg/Box		
Kt/Plt	Box/Plt		
m ² /Plt	m ² /Plt		
kg/Plt	kg/Plt		
Beyaz - White			
Lappato R	K879460LPR	K879504LPR	K879541LPR
Bej - Beige			
Lappato R	K879471LPR	K879515LPR	K879552LPR
Açık Gri - Light Grey			
Lappato R	K879456LPR	K879493LPR	K879530LPR
Koyu Gri - Dark Grey			
Lappato R	K879445LPR	K879482LPR	K879526LPR

Porcelain Ultima Microtec



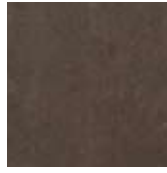
Beyaz - White



A. Krem - L. Cream



Krem - Cream



Moka - Mocha



Yeşil - Green



Mavi - Blue



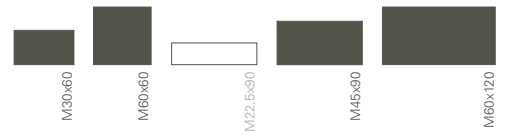
Gri - Grey



Antrasit

	M 60 x 120 cm (24 " x 48") 592 x 1192 x 10 mm EN14411 Bla	M 45 x 90 cm (18 " x 36") 442 x 892 x 10 mm EN14411 Bla	M 60 x 60 cm (24 " x 24") 592 x 592 x 9 mm EN14411 Bla	M 30 x 60 cm (12 " x 24") 292 x 592 x 9 mm EN14411 Bla
Ad/Kt	Pcs/Box			
m ² /Kt	m ² /Box			
kg/Kt	kg/Box			
Kt/Plt	Box/Plt			
m ² /Plt	m ² /Plt			
kg/Plt	kg/Plt			
	3	2	4	6
	2.16	0.81	1.44	1.08
	46.80	18.80	33.00	21.85
	13	28	30	44
	28.08	22.68	43.20	47.52
	608.40	526.40	990.00	961.40
Beyaz - White				
Mat R - Matt R		K866624R	K864771R	K864723R
Parlak - Polished	K875761	K866661	K864815	K864760
Satinato			K886682	K864760
A. Krem - L. Cream				
Mat R - Matt R		K873753R	K873731R	K873716R
Parlak - Polished		K873764	K873742	K873720
Krem - Cream				
Mat R - Matt R	K875750	K866613R	K864502R	K864476R
Parlak - Polished		K866650	K864804	K864756
Satinato			K886671	
Moka - Mocha				
Mat R - Matt R		K873565R	K873506R	K873440R
Parlak - Polished		K873591	K873532	K873473
Yeşil - Green				
Mat R - Matt R		K873554R	K873495R	K873436R
Parlak - Polished		K873580	K873521	K873462
Mavi - Blue				
Mat R - Matt R		K873543R	K873484R	K873425R
Parlak - Polished		K873576	K873510	K873451
Gri - Grey				
Mat R - Matt R	K875783	K866646R	K864491R	K864465R
Parlak - Polished		K866683	K864793	K864745
Satinato			K885783	
Antrasit - Anthracite				
Mat R - Matt R	K875772	K866635R	K864480R	K864454R
Parlak - Polished		K866672	K864782	K864734
Satinato			K886660	

Porcelain Ultima X-Treme



Gri - Grey



Antrasit

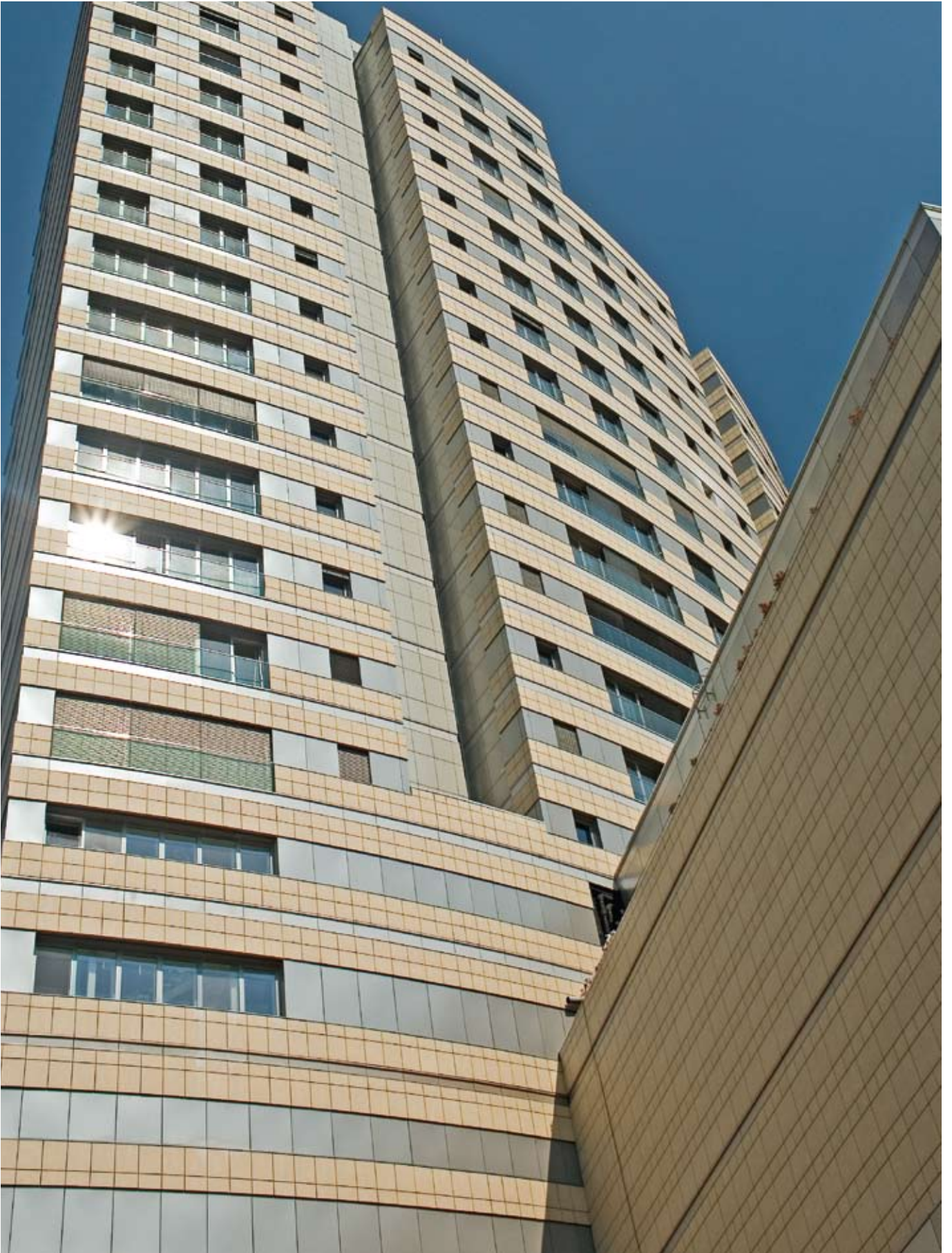


Krem - Cream



Moka - Mocha

	M 60 x 120 cm (24" x 48") 592 x 1192 x 10 mm EN14411 Bla	M 45 x 90 cm (18" x 36") 442 x 892 x 10 mm EN14411 Bla	M 60 x 60 cm (24" x 24") 592 x 592 x 9 mm EN14411 Bla	M 30 x 60 cm (12" x 24") 292 x 592 x 9 mm EN14411 Bla
Ad/Kt	Pcs/Box			
m ² /Kt	m ² /Box			
kg/Kt	kg/Box			
Kt/Plt	Box/Plt			
m ² /Plt	m ² /Plt			
kg/Plt	kg/Plt			
	3	2	4	6
	2.16	0.81	1.44	1.08
	49.90	17.70	27.90	20.00
	14	40	30	44
	30.24	32.40	43.20	47.52
	698.60	708.00	837.00	924.00
Gri - Grey				
R10A	K894113R	K898456R	K894312R	K894474R
R11B		K898493R	K894393R	K894555R
Antrasit				
R10A	K894102R	K898445R	K894301R	K894463R
R11B		K898482R	K894382R	K894544R
Krem - Cream				
R10A	K894124R	K898434R	K894323R	K894485R
R11B		K898471R	K894404R	K894566R
Moka - Mocha				
R10A	K894135R	K898460R	K894334R	K894496R
R11B		K898504R	K894415R	K894570R



Kanyon Project, İstanbul, Turkey



Teknik Bilgiler

Technical Pages

Arkitekt Teknik
Technical Information
Technische Informationen
L'information Technique
Техническая Информация
34-43

VitrA Photoactive

VitrA'dan yeni bir ilk...

Işık ve havadaki nem ile kendi kendini temizleyen fotokatalitik karolar.

VitrA Photoactive karolar, nano boyutlu titanyum dioksit (TiO₂) kaplı Fotokatalitik özellikleri sayesinde kendi kendini temizleyen karolar aynı zamanda havadaki kirlilikleri ve kötü kokuları yok ediyor.

Işık ve havadaki nem ile aktive olduğu için özellikle dış cephe kullanımında ideal olan VitrA Photoactive, üstün teknoloji ile yüzeyine gelen kirlilikleri parçalayarak yok ediyor. Ayrıca havadaki kirliliklerin ve kokuların temizlenmesine yardımcı oluyor.

VitrA Photoactive oksidasyon yeteneği ile antibakteriyel, antialgal, antifungal özelliklere sahip. Bu sayede karo yüzeyindeki bakteri, mantar ve yosun gibi mikro organizmalar yok ediliyor.

Fotokatalitik kaplama teknolojisi, tüm VitrA karolara uygulanabilir.
Photocatalytic coating technology can be applied to all VitrA tiles.
Die fotokatalytische Beschichtungstechnologie kann an allen VitrA Fliesen angewendet werden.
La technologie de revêtement photocatalytique peut être appliquée à toutes types de carreaux de VitrA.
Фотокаталитическое покрытие может быть использовано для всех видов плитки.

A brand new innovation from VitrA...

Self-cleaning photocatalytic tiles, sustained by light and moisture in the air.

Self-cleaning VitrA Photoactive tiles are coated with nanosized titanium dioxide (TiO₂). Thanks to their photocatalytic properties, VitrA Photoactive tiles are self-cleaning and the coating also eliminates air pollutants and unpleasant odors.

VitrA Photoactive tiles are especially ideal for external cladding since they are activated by light and humidity in the air. Hi-tech VitrA Photoactive tiles eliminate the pollutants on their surface by decomposing them. They help cleaning air pollutants and odors in the air as well.

Their oxidation skill provides VitrA Photoactive tiles the antibacterial, antialgal and antifungal properties. And thanks to these properties, microorganisms like bacteria, fungi and algae on the surface of the tiles are eliminated easily.



Eine Neuheit von VitrA...

Fotokatalytische Fliesen, die sich mit Licht und Feuchtigkeit selbst reinigen.

Aufgrund ihrer mit Titandioxid (TiO_2) beschichteten, fotokatalytischen Eigenschaft reinigen die VitrA Photoactive Fliesen sich selbst und beseitigen gleichzeitig Luftunreinheiten und schlechte Gerüche.

VitrA Photoactive wird durch Licht und Luftfeuchte aktiviert, beseitigt mit der hohen Technologie durch Zerteilung die Unreinheiten auf der Oberfläche und ist deshalb insbesondere ideal zur Anwendung an der Außenfassade. Außerdem trägt es zur Reinigung von Luftverschmutzung und Gerüchen bei.

VitrA Photoactive besitzt mit seiner Oxidationsfähigkeit antibakterielle, antialgale und antifungale Eigenschaften. Dadurch werden an der Fliesenoberfläche befindliche Mikroorganismen wie Bakterien, Pilze und Flechten vernichtet.

Une nouvelle innovation par VitrA

Carreaux autonettoyants photo-catalytiques, soutenus par la lumière et l'humidité dans l'air.

Les carreaux Photoactives VitrA sont recouverts de dioxyde de titane de taille nanométrique (TiO_2). Merci aux propriétés photo-catalytiques du revêtement, les carreaux sont autonettoyants et éliminent également les odeurs désagréables et les polluants atmosphériques.

Activés par la lumière et l'humidité dans l'air, les carreaux Photoactives de VitrA sont idéals surtout pour le revêtement extérieur. Les carreaux Photoactives de haute technologie de VitrA non seulement éliminent les polluants sur leur surface en leur décomposant, ils aident aussi à nettoyer les odeurs et les polluants de l'air.

Un processus d'oxydation fournit les propriétés antibactérienne, antifongique et anti-algale aux carreaux Photoactives VitrA. Grâce à ces propriétés, les micro-organismes comme les bactéries, les champignons et les algues sur la surface de carreaux sont éliminés.

Новейшая разработка от VitrA...

Фотокаталитическая плитка, которая самоочищается с помощью света и влаги.

Новая плитка имеет специальное покрытие с наночастицами диоксида титана и, обладая фотокаталитическими свойствами, не только самоочищается, но также удаляет неприятные запахи и загрязнения воздуха.

Высокотехнологичная плитка активируется за счет света и влаги и идеально подходит для использования на на фасадных поверхностях. Титано-диоксидовое покрытие не только удаляет запахи, но также очищает воздух, расщепляя при контакте загрязняющие воздух частицы.

Диоксид титана подавляет распространение бактерий, водорослей и убивает другие микроорганизмы и загрязнители в результате процесса окисления, что придает плитке антибактериальное, антиальгальное и антифунгальное свойства.

Kullanım alanları:

- Dış cephe giydirmе sistemleri
- Otoyol tünellerinin içi
- Restaurant-Bar
- Hastaneler
- Fitness Salonları
- Havuz seramikleri
- Sigara içme odaları

Usage Areas:

- External cladding systems
- Interiors of Motorway Tunnels
- Restaurants - Bars • Hospitals
- Fitness Centers
- Pool tiles
- Smoking Rooms

Anwendungsbereiche:

- Fassadenverkleidungssysteme
- Innenseite von Autobahntunnels
- Restaurants Bars
- Krankenhäuser
- Fitnesssalons
- Schwimmbeckenverfliesung
- Raucherzimmer

Domaines d'usage:

- Les systèmes de revêtement extérieur
- Intérieurs des tunnels des autoroutes
- Restaurants - Bars
- Hôpitaux
- Centres de Fitness
- Carreaux de piscine • Fumoirs

Зоны применения:

- Системы наружной облицовки,
- внутри автодорожных тунелей,
- рестораны и бары,
- больницы,
- фитнес-центры,
- облицовка бассейнов,
- комнаты для курения.



Kendi kendini temizleyen ve kolay temizlenen karolar

VitrA Photoactive karolar, kendi kendini temizleme özelliği sayesinde, özellikle dış cephe temizliklerinde gereken enerji, su, kimyasal temizlik malzemesi ve insan gücünden tasarruf sağlar.

Self-cleaning and easy to clean tiles

Self-cleaning VitrA Photoactive tiles significantly reduce the amounts of water, power, chemical cleaning agents and labor required to clean building facades in particular.

Selbstreinigende und leicht zu reinigende Fliesen

Die VitrA Photoactive Fliesen vermindern durch die selbstreinigende Eigenschaft die notwendige Menge an Energie, Wasser, chemischen Reinigungsmitteln und Arbeitskraft, die insbesondere für die Reinigung von Außenfassaden notwendig ist.

Les carreaux autonettoyant et facile à nettoyer

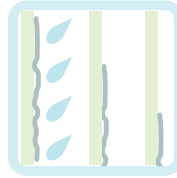
Les carreaux Photoactives autonettoyantes VitrA réduisent significativement les quantités d'eau, de l'électricité, des agents chimiques de nettoyage et de main-d'œuvre nécessaires pour nettoyer la façade des immeubles en particulier

Самоочищающаяся и легко очищаемая плитка

Благодаря своей особенности самоочищаться, плитка VitrA Photoactive позволяет уменьшить расходы воды, энергии, химических очистителей и рабочей силы при очищении внешних фасадов.

Hidrofilik 'suyu seven' yüzey

Yüzeyle gelen su veya yağmur ile toz ve diğer kirliler yüzeyden kolayca akar.

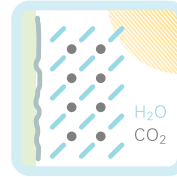


Hydrophilic 'water loving' surface

Dust or other dirt particles on the surface are easily washed away by rain or water.

Fotokatalitik etki

Yüzeyle gelen organik kirlilikler parçalanarak yok olur.



Photocatalytic action

It eliminates the organic pollutants upon contact by decomposition.

Antimikrobiyal etki

Oksidasyon yeteneği sayesinde bakteri, küf, mantar ve yosun oluşumunu azaltır.



Antimicrobial action

Thanks to the oxidation feature, it reduces bacterial, fungal, algal or mould growth.

Koku giderici etki

Havada kirlilik yaratan azot ve sülfür oksit gibi maddelerin, sigara kokularının ve hastanelerde yoğun olan ilaç kokusunun giderilmesi için ideal bir çözümdür.



Odor eliminating action

It is a perfect solution to air pollutants such as nitrogen oxides and sulfur oxides, cigarette smoke, as well as the smell of disinfectant and other hospital odors.

Hydrophile 'wasserfreundliche' Oberfläche

Staub und diverser Schmutz werden durch Wasser und Regen einfach weggespült.

Surface hydrophilique "attiré à l'eau"

Poussière ou d'autres particules de saleté sur la surface sont facilement emportés par la pluie ou l'eau de nettoyage.

Гидрофильная "влаголюбивая" поверхность

Пыль и другие загрязнения легко смываются водой либо дождем, попавшим на поверхность.

Fotokatalytische Wirkung

An der Oberfläche haftender organischer Schmutz wird aufgelöst und verschwindet.

L'action photo-catalytique

Élimine les polluants organiques en contact par décomposition.

Фотокаталитический эффект

Расщепляя, убивает органические частицы на поверхности плитки.

Antibakterielle Wirkung

Durch die Oxidationseigenschaft wird die Bildung von Bakterien, Schimmeln, Pilzen und Algen verhindert.

L'action antimicrobienne

La fonction de l'oxydation empêche la croissance bactériennes, fongiques, algues ou de moisissure.

Антимикробное действие

Благодаря окислительным свойствам снижает возможность появления бактерий, плесени, грибов и водорослей.

Geruchsbekämpfende Wirkung

Die ideale Lösung zur Beseitigung von Stoffen wie Stickstoff und Schwefeloxid, die zu Luftverschmutzung führen, sowie von Zigarettenrauch und intensivem Arzneimittelgeruch in Krankenhäusern.

L'action d'élimination des odeurs

Solution parfaite pour les polluants atmosphériques tels que les oxydes de l'azote et de soufre, la fumée de cigarette, ainsi comme l'odeur des désinfectants et les odeurs des hôpitaux.

Эффект удаления запахов

Идеальное решение для избавления от загрязняющих воздух веществ: таких как азот и оксид серы, сигаретный дым или насыщенный запах лекарств в больницах.

Parlak karolar hakkında

Parlak karo malzemesi, parlatma işleminden sonra çok yüksek olan teknik özelliklerini korumasına karşın, üst yüzeyinde oluşan mikroskopik gözenekli yapısı lekelenmeyi kolaylaştırır. Ancak estetik kalitesi ve canlı renkliliği nedeniyle tercih edilir. Aynı nedenle oluşan parlak yüzeyin aşınma dayanıklılığı (MOHS) parlatılmamış malzemeninkinden daha düşüktür. Lekelenme durumunda lekenin kalıcı olmaması için hiç bekletmeden özel olarak üretilmiş leke çıkarıcı malzemelerle temizlenmesi gerekmektedir.

Bununla birlikte lekelenmeyi önlemeye yönelik piyasada farklı markalarda yüzey koruyucu ürünler bulunmakta olup, döşeme sonrası bunlarla kaplama yapılabilir. Ayrıca Vitra Karo kullanıma hazır Protect kodlu lekelenmeyi önlemeye yönelik uygulama yapılmış ürünler üretmektedir.

A reminder about polished tiles

Although a polished tile will preserve its superior technical specifications, the formation of its microscopic pores makes it susceptible to staining. For the same reason the surface of the polished material has a lower hardness resistance measure than its matt version on the MOHS scale. In the case of staining it is recommended to use cleaning agents by specialised producers immediately after contact.

There are different kinds of surface protection agents in the market which can be used after the tiles have been laid. Vitra Tiles suggests using Protect which is a ready-to-apply application on polished porcelain tiles.

Über poliertes Feinsteinzeug

Obwohl poliertes Feinsteinzeug nach dem Polieren all seine hochtechnischen Eigenschaften behält, wird es durch die mikroporöse Oberfläche sensible gegen Flecken. Poliertes Feinsteinzeug wird wegen seiner ästhetischen Qualität und Farbigkeit bevorzugt. Wegen den selben Grund hat es einen geringeren Abriebswert auf der MOHS-Skala im Vergleich des matten Feinsteinzeuges. Wenn es beschmutzt wird, soll die Oberfläche gleich mit speziellen Reinigern gereinigt werden.

Es gibt verschiedene Versiegelungsmittel auf dem Markt, die man nach dem Verlegen verwenden kann. Es wird empfohlen, die Protect Versiegelung auf den polierten Fliesen zu verwenden, die auf Wunsch im Werk von Vitra appliziert wird.

A propos des carreaux grès cérame poli

Bien qu'un grès cérame poli préserve ses caractéristiques techniques supérieures, la formation de ses pores microscopiques le rend susceptible pour la souillure. Pour la même raison, la surface du grès cérame poli a une mesure inférieure de résistance de dureté par rapport à un grès cérame matt sur l'échelle de Mohs. Dans le cas de la souillure, a fin qu'elle ne soit pas permanente, il est recommandé de nettoyer sans attendre avec des produits d'épuration spécialement fabriqués pour ce genre de nettoyage. Malgré tout les grès cérames polis sont préférables grâce à leurs qualités esthétique et leurs couleurs vivantes.

Il ya plusieurs marques de produit pour la protection des surfaces des grès cérames polis et ces produits empêchent aussi la souillure. Il est possible de les appliquer même après la pose.

De plus, Vitra Karo fabrique des produits avec le code Protect qui sont prêt à utiliser et qui l'usage de ne pas tenir de tâche.

Особенности полированной плитки

техническим требованиям своей категории, наличие микроскопических пор определяет ее способность к окрашиванию. По этой причине полированная поверхность имеет меньшую стойкость к истиранию, чем матовая. В случае загрязнения или окрашивания рекомендуется использовать специальные реагенты профессиональных производителей непосредственно сразу после контакта с красящим веществом.

На рынке представлено большое количество средств по уходу за поверхностью, которые могут использоваться после укладки плитки. Vitra предлагает нанесение на полированный керамогранит защитного слоя Protect, который избавит Вас от использования дополнительных средств.

Arkitekt Teknik

Teknik Özellikler Technical Characteristics Technische Eigenschaften Caractéristiques techniques Технические характеристики	Test Metodu Test Standard Prüfung nach Méthode du test Тестовый стандарт	PORCELAIN BODY Sırsız / Unglazed / Unglasierte non émaillés / Глазурованная	PORCELAIN BODY Sırlı / Glazed / Glasierte émaillés Глазуванная	FOOR TILE BODY Sırlı / Glazed / Glasierte émaillés / Глазуванная	WALL TILE BODY Sırlı / Glazed / Glasierte émaillés / Глазуванная
		EN 14411 Group BIa, Annex G	EN 14411 Group BIa, Annex G	EN 14411 Group BIb, Annex H	EN 14411 Group BIII, Annex L
		SIZE S > 410 cm2	SIZE S > 410 cm2	SIZE S > 410 cm2	ALL SIZES

Boyut ve Yüzey Kalitesi / Dimension and surface quality / Masse und Oberflächenbeschaffenheit / Dimensions et qualité de surface / Размеры и качество поверхности

Uzunluk ve Genişlik / Length and Width Länge und Breite / Longueur et largeur Длина и ширина	EN ISO 10545-2	± % 0,6	± % 0,6	± % 0,6	Max. ± 0,5 %
Kalınlık / Thickness Dicke / Epaisseur Толщина	EN ISO 10545-2	+ % 5	+ % 5	+ % 5	Max. ± 10 %
Kenar Eğriliği / Straightness of sides Geradheit der kanten / Rectitude des aretes Прямота сторон	EN ISO 10545-2	+ % 0,5	+ % 0,5	+ % 0,5	Max. ± 0,3 %
Dikdörtgenlik / Rectangularity Rechtwinkligkeit / Angularité Прямоугольность	EN ISO 10545-2	± % 0,6	± % 0,6	± % 0,6	Max. ± 0,5 %
Yüzey Düzgünlüğü / Surface Flatness Ebenflächigkeit / Planéité de surface Плоскость поверхности	EN ISO 10545-2	+ % 0,5	+ % 0,5	+ % 0,5	Max. +0,5%/-0,3% for centre and edge Max. ± 0,5 % for warpage
Yüzey Kalitesi / Surface Quality Oberflächenbeschaffenheit / Qualité de surface Качество поверхности	EN ISO 10545-2	Min. 95 % free from visible defects / Мин. на 95% без видимых дефектов			

Fiziksel Özellikler / Physical Properties / Physikalische Eigenschaften / Propriétés physiques / Физические характеристики

Su Emme / Water Absorption Wasseraufnahme / Absorption d'eau Водопоглощение	EN ISO 10545-3	≤ 0,5 %	≤ 0,5 %	0,5% < E ≤ 3,0 %	E > 10%
Eğilme Dayanımı / Modulus of rupture Biegefestigkeit / Résistance à la flexion Модуль излома	EN ISO 10545-4	Min 35 N/mm2	Min 35 N/mm2	Min 30 N/mm2	Min 15 N/mm2
Kırılma Dayanımı / Breaking Strength Bruchlast / Force de rupture Прочность на излом	EN ISO 10545-4	Min.1300 N (t≥7,5mm) Min. 700 N (t<7,5mm)	Min.1300 N (t≥7,5mm) Min. 700 N (t<7,5mm)	Min. 1100 N (t≥7,5mm) Min. 700 N (t<7,5mm)	Min.600N (t≥7,5mm) Min.200 N (t<7,5mm)
Yüzey Aşınma / Surface Abrasion Widerstand gegen Oberflächenverschleiß Résistance à l'abrasion PEI Поверхностное истирание	EN ISO 10545-7	----	As specified in the catalogue Согласно определению в каталоге	As specified in the catalogue Согласно определению в каталоге	Not intended to be used on the floor Не предназначена для использования на полу
Derin Aşınma / Deep Abrasion Widerstand gegen Tiefenverschleiß Résistance à l'abrasion Profonde Износостойкость	EN ISO 10545-6	Max. 175 mm3	----	----	----
Lineer Isıl Genleşme Linear Thermal Expansion Lineer Wärmeausdehnungs koeffizient Coeff. de dilatation thermique linéaire Линейное тепловое расширение	EN ISO 10545-8	Max 9 x 10-6 K-1	Max 9 x 10-6 K-1	Max 9 x 10-6 K-1	Max 9 x 10-6 K-1
Isı Şokuna Dayanım Thermal Shock Resistance Temperaturwechselbeständigkeit Résistance au choc thermique Сопротивление тепловому удару	EN ISO 10545-9	Başarılı / Achieved Erreicht / Conforme Достигнуто	Başarılı / Achieved Erreicht / Conforme Достигнуто	Başarılı / Achieved Erreicht / Conforme Достигнуто	Başarılı / Achieved Erreicht / Conforme Достигнуто
Don Dayanımı / Frost Resistance Frostbeständigkeit/ Résistance au gel Сопротивление промерзанию	EN ISO 10545-12	Başarılı / Achieved Erreicht / Conforme Достигнуто	Başarılı / Achieved Erreicht / Conforme Достигнуто	Başarılı / Achieved Erreicht / Conforme Достигнуто	----
Sürtünme Katsayısı / Coefficient of friction Reibungskoeffizient / Résistance à la glissance Коэффициент трения	Beyan edilen metod Declared test method Angabe Prüfverfahren Заявленный метод испытания	As specified in the catalogue Согласно определению в каталоге	As specified in the catalogue Согласно определению в каталоге	As specified in the catalogue Согласно определению в каталоге	Not intended to be used on the floor Не предназначена для использования на полу
Sırlı karolalarda çatlama dayanım Crazing resistance Widerstand gegen Glassurrisse Résistance au tressailage Сопротивление разрастанию усталостных трещин	EN ISO 10545-11	----	Başarılı / Achieved Erreicht / Conforme Достигнуто	Başarılı / Achieved Erreicht / Conforme Достигнуто	Başarılı / Achieved Erreicht / Conforme Достигнуто

Kimyasal Dayanım / Chemical Resistance / Chemische Eigenschaften / Propriétés Chimiques / Устойчивость к химическому воздействию

Lekelenmeye Dayanım Staining resistant Beständigkeit gegen Fleckbeständigkeit Résistance aux taches Сопротивление образованию пятен	EN ISO 10545-14	Test Metodu bulunur Test Method Available Prüfverfahren Vorhanden Méthode d'essai applicable Применимый метод испытания	Sınıf 3 / Min. Class Klasse / Classe 3 Мин. класс	Sınıf 3 / Min. Class Klasse / Classe 3 Мин. класс	Sınıf 3 / Min. Class Klasse / Classe 3 Мин. класс
Ev kimyasalları ve yüzme havuzu temizleyicilerine dayanım Resistance to household chemicals and swimming pool water cleaners Beständigkeit gegen Haushaltschemikalien und Badewassersärsätze Résistance aux produits ménagers Сопротивление бытовой химии и очистителям воды для бассейнов	EN ISO 10545-13	Sınıf / Class Klasse/ Classe / Класс Min. UB	Sınıf / Class Klasse/ Classe / Класс Min. GB	Sınıf / Class Klasse/ Classe / Класс Min. GB	Sınıf / Class Klasse/ Classe / Класс Min. GB
Düşük konsantrasyonlu asit ve alkali dayanımı Resistance to low concentrations acids&alkalis Beständigkeit gegen Säuren und Laugen mit niedriger Konzentration Résistance aux produits bas concentration acides et bases Сопротивление слабо концентрированным кислотным и щелочным растворам	EN ISO 10545-13	ULA-ULC	GLA-GLC	GLA-GLC	GLA-GLC
Yüksek konsantrasyonlu asit ve alkali dayanımı Resistance to high concentrations acids&alkalis Beständigkeit gegen Säuren und Laugen mit hoher Konzentration Résistance aux produits haut concentration acides et bases Сопротивление сильно концентрированным кислотным и щелочным растворам	EN ISO 10545-13	UHA-UHC	GHA - GHC	GHA - GHC	GHA - GHC

VitrA tiles conforms to EN 14411 Standard requirements which are specified in the related product groups , with better values .

Плитка «VitrA» отвечает требованиям Стандарта EN 14411, применимым к соответствующим группам продукции, с более высокими параметрами.



EN 14411

Ürün / Product / Produkt / Produits / Продукт

- Düşük su emmeli kuru preslenmiş seramik karolar E ≤ 0,5 - Grup Bla (Tam vitriye -porcelain- karolar)
- Dry pressed-ceramic tiles with low water absorption E ≤ 0,5% - Group Bla (Fully vitrified -porcelain-tiles)
- Trockengepresste keramische Fliesen und Platten mit geringer Wasseraufnahme E ≤ 0,5% - Gruppe Bla (Feinsteinzeug Fliesen)
- Carreaux céramiques pressés à sec présentant une faible absorption d'eau E ≤ 0,5% -Groupe Bla (Carreaux en Grès Cérame)
- Керамическая плитка сухого прессования с низким коэффициентом водопоглощения E ≤ 0,5% - группа Bla (полностью глазурованная керамическая плитка)

Kullanım Alanı / Intended use / Vorgesehene Verwendungszwecke / Usages prévus / Целевое использование

İç ve Dış mekanda yer ve duvar kaplama amaçlı
For external and internal floor and wall finishes
Für bodenbeläge und wand innen und außen
Pour les sols et les murs intérieurs et extérieurs
Для наружной и внутренней облицовки пола и стен



Özellikler / Characteristics Merkmale / Caractéristiques Характеристика		Beyan edilen değer / Declared value Angegebener Wert / Valeur déclarée Заявленное значение	Dene yöntemleri Test methods Prüfverfahren Méthodes d'essai Метод испытания
Yangına dayanıklılık / Reaction to fire Brandverhalten / Réaction au feu Реакция на огонь		Sınıf / Class / Klasse / Classe / Класс A1 – A1fl	Decision 96/603/EEC Решение 96/603/ЕЭС
Eğilme gerilme dayanımı / Flexural tensile strength Biegefestigkeit / Résistance à la flexion Предел прочности при изгибе		≥ 35 N/mm ²	EN ISO 10545-4
Kırılma kuvveti / Breaking strength Bruchlast / Force de rupture Предел прочности на разрыв (t= thickness, kalınlık, dicke, épaisseur, толщина)		≥ 700 N (t < 7,5mm) ≥ 1300 N (t ≥ 7,5mm)	EN ISO 10545-4
Kaymaya direnç / Slipperiness Rutschhemmende Eigenschaften / Glissance Скользкость		NPD -No Performance Determined (1) Значения не установлены (1)	DIN 51130 / DIN 51097
Sürtünme direnci / Skid resistance Gleitwiderstand / Résistance au glissement Сопротивление скольжению		NPD -No Performance Determined (1) Значения не установлены (1)	----
Bağ dayanımı - yapışma / Bond strength-adhesion Verbundfestigkeit-Haftfestigkeit / Adhérence Прочность сцепления		≥ 0,5 N/mm ² Çimento esaslı yapıştırıcılar için Tip C2 For cementitious adhesives Typ C2 Pour les mortiers colles Typ C2 Für zementhaltige Mörtel Typ C2 Для вяжущего клеящего материала Типа C2	EN 1348 ; 8.2 (EN 12004)
Donma dayanımı / Freeze/thaw resistance Frostbeständigkeit / Résistance au gel/dégel Сопротивление промерзанию/таянию		Geçer / Passed / Bestanden / Validé / Пройден контроль	EN ISO 10545-12
Isı şokuna dayanıklılık / Thermal shock resistance Temperaturwechsel beständigkeit / Résistance au choc thermique Сопротивление тепловому удару		Geçer / Passed / Bestanden / Validé / Пройден контроль	EN ISO 10545-9
Kurşun ve kadmiyum açığa çıkması / Release of lead and cadmium Abgabe von blei und cadmium / Dégagement de cadmium et plomb Выделение свинца и кадмия		Geçer / Passed / Bestanden / Validé / Пройден контроль	EN ISO 10545-15

(1) Sadece ilgili ülke mevzuatında gerekiyorsa, Vitra teknik dökümanları ve/veya kutu üzerinde belirtildiği şekilde

Only if required by corresponding national statutory regulations, as stated in the related Vitra technical documents and/or on the boxes

Nur wenn erforderlich durch entsprechende nationale gesetzliche Regelungen, wie in den in Verbindung stehenden Vitra technischen Dokumenten und/oder auf den Kästen angegeben

Seulement s'il y a lieu par des règlements statutaires nationaux correspondants, comme indiqué dans les documents techniques relatifs de Vitra et/ou sur les boîtes

Только если требуется согласно соответствующим законодательным положениям, о чем будет указано в соответствующей технической документации «Vitra» и/или на коробках.

Semboller - Symbols - Symbole - Symboles - Обозначения



Duvarda kullanım
Wall tiles
Настенная плитка



Tek pişirim
Single firing
Единый обжиг



Dekor
Decorated
Декорированная



Zeminde kullanım
Floor tiles
Напольная плитка



Dona dayanıklı
Frost resistance
Морозостойкость



NF UPEC normlarına uygun ürünlerimizin ayrıntılı listesini internet sitemizden bulabilir veya yetkililerden isteyebilirsiniz.

Pour avoir la liste complète de nos produits conformes aux normes NF UPEC, veuillez visiter notre site internet ou s'adresser aux responsables.

For the detailed list of our products complying with NF UPEC norms, please ask authorized personnel or refer to our web site.

Для получения подробного списка нашей продукции, отвечающей нормам NF UPEC, вы можете обратиться к уполномоченному персоналу или зайти на наш веб-сайт.

Für die ausführliche Liste von unseren Produkten, die sich an NF UPEC Normen anhalten, sehen Sie unsere Webseite oder fragen Sie bitte Fachpersonen.

Renk ve desen farklılaşması sınıflandırılması Shade variation classification Классификация смены оттенков

- V0 Monochromatic - Монохромная**
Tek renk, tonlama farkı yok.
Very Uniform, monochromatic color
Очень равномерный, монохромный цвет
- V1 Low - Низкая**
Karonun kendi içinde ve karolar arasında hafif renk tonu farklılaşması var.
Consistent color within each tile and from tile to tile
Однородный цвет в пределах одной плитки и от плитки к плитке
- V2 Medium - Средняя**
Karolar arasında çok hafif renk tonu ve desen farklılaşması var.
Color variation within each tile
Изменение цвета в пределах одной плитки
- V3 High - Высокая**
Karolar arasında ve karonun kendi yüzeyinde hafif renk tonu ve desen farklılaşması var.
Some variation from tile to tile, and within each tile
Изменение цвета от плитки к плитке и в пределах одной плитки
- V4 Random - «Рэндом»**
Gerçek doğal taş görüntüsü için karoların her biri farklı renk tonunda ve farklı desende üretilmiştir.
Considerable variation from tile to tile
Существенное изменение цвета от плитки к плитке.

Dikkat - Attention - Achtung - Внимание

Seramik karoları sipariş ederken kullanım alanlarını belirtiniz.

Seramik karoları döşemedenden önce lütfen tonalite ve kalibre numaralarının aynı mekânlar için aynı olmasına dikkat ediniz; döşendikten sonra sorumluluk kabul edilmez.

Çamşu bordürlerde Kraküle (çatlama) olabilir, seramiğin doğasında olan bir unsurdur.

Vitra Karo Seramikleri ile birlikte Vitra Fix derz dolgu ve yapıştırıcı malzemeleri kullanılması önerilir.

Katalogdaki ürün renkleri seramik karoların renklerini aynen yansıtmayabilir.

When ordering ceramic tiles specify the areas of use.

Before tile setting, verify the tonality and calibration numbers, claims regarding these indications cannot be accepted after tile setting.

Crazing of glass borders is a nature of the ceramic tiles.

It is recommended to use Vitra Fix grout and adhesive materials with Vitra Ceramic Tiles.

The colours of tiles in the catalogue may not reflect the exact colours of the products.

При размещении заказа на керамическую плитку указывайте область применения.

Перед началом облицовки проверьте цветовую схему и калибровочные номера; после облицовки претензии в отношении этих параметров не принимаются.

Образование трещин на границах характерно для керамической плитки.

Для керамической плитки «Vitra» рекомендуется использовать затирку для швов и адгезивные материалы марки «Vitrax Fix».

Возможно неточное соответствие цвета плитки, указанного в каталоге, фактическому цвету плитки.

İletişim

Vitra markasının geniş kapsamlı Arkitekt serisi, hakkında daha ayrıntılı bilgiyi yetkili satıcınızdan veya Vitra yetkilisinden temin edebileceğiniz gibi internet sayfamızda da bulabilirsiniz.

www.vitra.com.tr

Contact

For more information about the comprehensive architecture range from Vitra speak to your dealer or contact the Vitra sales team.

Please visit us on the internet at:

www.vitra.com.tr

Ihre Ansprechpartner

Weitere Informationen zu dem umfangreichen Architektursortiment der Marke Vitra erhalten Sie von Ihren Ansprechpartnern im Handel oder dem Vitra Außendienst.

Bitte besuchen Sie uns auch auf unserer Homepage:

www.vitra.com.tr

Vos interlocuteurs

Vous pouvez obtenir de plus amples informations sur la vaste gamme architecture de la marque Vitra auprès de votre distributeur ou du service extérieur de Vitra.

Vous pouvez également nous rendre visite sur nos sites

Internet :

www.vitra.com.tr

Контактная информация

В целях получения более точной информации относительно широкого спектра плиток Витра обратитесь к вашему дилеру или свяжитесь с отделом сбыта Витра. Пожалуйста, посетите наш сайт в Интернете:

www.vitra.com.tr





Referanslar
References

44-49



İnci Rezidans, Istanbul, Turkey

Referanslar

References

Proje Adı / Name of the Project	Yeri / Place	Yapım Yılı/Construction Date
Eczacıbaşı Holding-Istanbul	Turkey	1998-1999
Sosyal Sigortalar Kurumu-Bursa	Turkey	1999-2000
Feniş Alüminyum-Istanbul	Turkey	2000
Tuzla Belediyesi-Istanbul	Turkey	2000
İstanbul Technical University-Istanbul	Turkey	2000-2001
Town Center-Istanbul	Turkey	2000-2001
Köymen Construction	Russia	2000-2001
Darüşşafaka-Istanbul	Turkey	2003
VitrA Karo Mosaic Factory-Istanbul	Turkey	2004
Danish Crown	Denmark	2004
Dnish TV	Denmark	2004
Kanyon-Istanbul	Turkey	2005
Setun Lake Rezidance	Russia	2005
Hospital Moscow	Russia	2005
VitrA Karo Meeting Building-Istanbul	Turkey	2006
Eczacıbaşı Lincoln Askaynak-Istanbul	Turkey	2007
Eczacıbaşı Girişim Pazarlama-Istanbu	Turkey	2007
Avni Akyol Lisesi-Istanbul	Turkey	2008
Bahçelievler Belediyesi (Muhsin Yazıcıoğlu Spor Kompleksi)-Istanbul	Turkey	2008
Gebze Namet Fabrikası-Istanbul	Turkey	2008
İnci Residance-Istanbul	Turkey	2009
Sabiha Gökçen Terminal Binası-Istanbul	Turkey	2009
Es Kule-Istanbul	Turkey	2009
Eczacıbaşı İpek Kağıt-Istanbul	Turkey	2009
Duk Kravatları-Istanbul	Turkey	2009
İmpa Yapı-Istanbul	Turkey	2009
Eczacıbaşı Levent Ofis Binası-Istanbul	Turkey	2009
Eskişehir Anadolu Üniversitesi		
Kapalı Spor Salonu-Eskişehir	Turkey	2009
Bakırköy Adliyesi-Istanbul	Turkey	2009
Ora-Istanbul	Turkey	2010
Kızılay Kan Merkezi-Istanbul	Turkey	2010
Sentez Metal-Istanbul	Turkey	2010
Aybar Apt.-Istanbul	Turkey	2010
Dumankaya Konsept-Istanbul	Turkey	2010
Karma Evler-Istanbul	Turkey	2010
Mio Yapı-Istanbul	Turkey	2010
Emir Sultan-Bursa	Turkey	2010
Al Fateh-Libya	Libya	2010

Referanslar



*Adalet Sarayı, Bakırköy, İstanbul, Turkey
Daruşafaka, İstanbul, Turkey*



*Anadolu Üniversitesi, Eskişehir, Turkey
Danish TV, Denmark*



*Levent 198, Istanbul, Turkey
New IT & Science College - University of Bahrain*



*Esin İnşaat, Istanbul, Turkey
Dük Kravatlari, Istanbul, Turkey*

**ÜRETİCİ
PRODUCERS
Производители**

VitrA Karo Sanayi ve Ticaret A.Ş.
E5 Karayolu Üzeri Şifa Mah. Atatürk Cad.
Tuzla 34941 İstanbul, TURKEY
T. (90-216) 581 46 00
F. (90-216) 423 46 13 - 423 49 73

Bozüyük Fabrika
Bozüyük Plant Eskişehir Yolu 4. km
Bozüyük, TURKEY
T. (90-228) 314 04 22
F. (90-228) 314 04 28

Moscow Plant
Moscow Region,
Serpukhov District,
Bolshevik Village, Lenin Street,
No. 36, 142253 RUSSIA
Tel & Fax: (7-4967) 39 12 07

**YURT İÇİ SATIŞ
DOMESTIC SALES
ПРОДАЖА ВНУТРИ СТРАНЫ**

İntema A.Ş.
Ali Kaya Sok. No.7
34394, Levent / İstanbul , TURKEY
T. (90-212) 350 80 00
F. (90-212) 350 85 80

Danışma Hattı
0800 211 70 00 / 0532 755 75 00

**EXPORT
ЭКСПОРТ**

Bozüyük Fabrika
Bozüyük Plant
Eskişehir Yolu 4. km
Bozüyük, TURKEY
T. (90-228) 314 04 22
F. (90-228) 314 04 28

**YURTDIŞİTEMSİLCİLİKLERİ
OVERSEAS OPERATIONS
КОМПАНИИ ЗАГРАНИЦЕЙ**

VitrA Ireland Ltd.
IDA Business Park Ballynattin
Arklow Co. Wicklow, IRELAND
T. (353-402) 26 500
F. (353-402) 91 355

VitrA U.K. Ltd
Park 34, Collett Way
Didcot, Oxon OX11 7WB, U.K.
T. (0-1235) 750990
F. (0-1235) 750980

VitrA Russia
Taganskaya Str., 31
109147 Moscow, RUSSIA
T. (7-495) 967 65 06
F. (7-495) 967 65 06

VitrA USA
305 Shawnee North Drive
Suite 600 Suwanee GA
30024, USA
T. (1-770) 904 6173 - 904 6178
F. (1-770) 904 6891

VitrA BAD GmbH
Brucknerstraße 43
D-56566 Neuwied, GERMANY
T. (49-2622) 8895 500
F. (49-2622) 8895 550

VitrA Bulgaria Ltd.
88, Bulgaria blvd.
1680 Sofia BULGARIA
T. (359-2) 854 83 05 - 06
F. (359-2) 854 83 09

**İNTEMA
SHOWROOM
ВЫСТАВОЧНЫЕ ЗАЛЫ**

Intema Caddebostan
Bağdat Caddesi, No: 278/A
Caddebostan, İstanbul, TURKEY
T. (90-216) 467 06 40
F. (90-216) 350 31 84

Intema Nişantaşı
Valikonağı Cad. No:26 80200
Nişantaşı, İstanbul, TURKEY
T. (90-212) 233 07 78-230
F. (90-212) 232 94 67

Intema Florya
Şenlikköy Mah. Yeşilköy cad. No:9
Florya Bakırköy, İstanbul, TURKEY
T. (90-212) 574 05 48 - 109
F. (90-212) 573 53 15

Intema Ankara
Turan Güneş Bulvarı No:86
Yıldız, Ankara, TURKEY
T. (90-312) 439 46 01
F. (90-312) 440 94 50

Intema İzmir
Şehit Nevres Bulvarı. No:10
Deren Plaza Montrö Meydanı
Alsancak, İzmir, TURKEY
T. (90-232) 446 48 38-39
F. (90-232) 446 81 00

Intema Çeşme
Sakarya Boyalık Mah. 3198 Sok.
No: 8 Çeşme, İzmir, TURKEY
T. (90-232) 712 74 77
F. (90-232) 712 68 22

Intema Adana
Atatürk Cad. No:56/B 01120
Seyhan, Adana, TURKEY
T. (0322) 457 96 63-45
F. (0322) 453 87 48

Intema Samsun
Denizevleri mah. Atatürk bulv. No:82
Atakum, Samsun, TURKEY
T. (0362) 438 39 18
F. (0362) 438 10 35

Intema Kayseri
Melikgazi Mah. Org. Eşref Bitlis Bulvarı
No:9/A Melikgazi, Kayseri, TURKEY
T. (0352) 2346070
F. (0352) 2346030

Intema Kuşadası
Turgut Özal Bulvarı, Türkmen Mahallesi
Kuşadası, Aydın, TURKEY
T. (0256) 612 23 20
F. (0256) 612 23 27

Intema Ayvalık
Atatürk Cad. No:109 Ayvalık
Ayvalık, Balıkesir, TURKEY
T. (0266) 3126025
F. (0266) 3126036

İntema Eskişehir
Yenibağlar Mah. İsmet İnönü Cad.
Kat:1 No: 136
Eskişehir, TURKEY
T. (90-222) 335 04 14
F. (90-222) 335 04 06

İntema Gaziantep
İncirlişar Mah. Nail Bilen Cad. No:11-13
Şehitkamil, Gaziantep, TURKEY
T. (90-342) 215 04 98
F. (90-342) 215 04 99

**YURTDIŐI SHOWROOM
OVERSEAS SHOWROOMS
ВЫСТАВОЧНЫЕ ЗАЛЫ**

Arklow Showroom
IDA Business Park Ballynattin
Arklow Co. Wicklow, IRELAND
T. (353-402) 26 514
F. (353-402) 91 355

Dublin Showroom
Unit N1, North Ring Business
Park Santry, Dublin, IRELAND
T. (353-1) 816 55 89
F. (353-1) 816 55 90

Cork Showroom
6 Lapps Quay, Cork, IRELAND
Tel: (353-0)21 - 4251434
Fax: (353-0)21 - 4273764

Atlanta Showroom
305 Shawnee North Drive
Suite 600 Suwanee GA
30024, USA
T. (1-770) 904 6173 - 904 6178
F. (1-770) 904 6891

Köln Showroom
Agrippinawerft 24
D-50678 Köln, Cologne, GERMANY
T. (49-221) 27 73 68-0
F. (49-2622) 88 95 500

Sofia Showroom
88, Bulgaria blvd.
1680 Sofia BULGARIA
T. (359-2) 854 83 05 - 06
F. (359-2) 854 83 09

Plovdiv Showroom
5.Dunav blvd.
4000 Plovdiv BULGARIA
T. (359) 32 511 608-9
F. (359) 32 511 620

Moscow Showroom
Taganskaya Str., 31
109147 Moscow, RUSSIA
T. (7-495) 967 65 06
F. (7-495) 967 65 06

Kazan Showroom
Dekabristov str, 83
420034 Kazan, RUSSIA
Tel: +7(843) 562-12-15
Fax: +7(843) 562-12-30

Serphukov Showroom
Borisovskoe Shosse, 111 RUSSIA
Tel: +7(496) 738 0607

Ekaterinburg Showroom
Krasnoarmeiskaya Str.,66
620026 Ekaterinburg, RUSSIA
T: +7(343) 357 30 48
F: +7(343) 357 30 48

**SATIŐ OFİSLERİ
SALES OFFICES
Офисы продаж**

UAE Representative Office
Jumeirah Business Centre 5 (JBC-5)
Unit 1006
Jumeirah Lake Towers (JLT)
Dubai / UAE
T: +971-4457 24 76
T: +971-4457 24 67

BAHRAIN Representative Office
Office no: 367, Block no: 333
Um Al Hassem
Manama / Kingdom of BAHRAIN
T: +973 13 692 226
F: +973 13 692 228

IRAQ Representative Office
English Village compound House
Golden Street No:88
Erbil / IRAQ
T: +964 750 413 95 93

SAUDI ARABIA Representative Office
P.O. BOX 2650
11461 Riyadh / SAUDI ARABIA
T:+966 1 201 31 74
F:+966 1 217 76 45

LIBYA Representative Office
Gergaresh Riad Hai Andulus
Tripoli / LIBYA
T: +218 21 477 05 15
F:+218 21 477 06 41

VitrA

