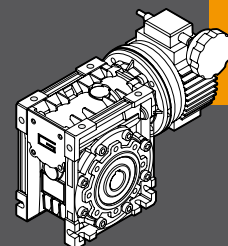


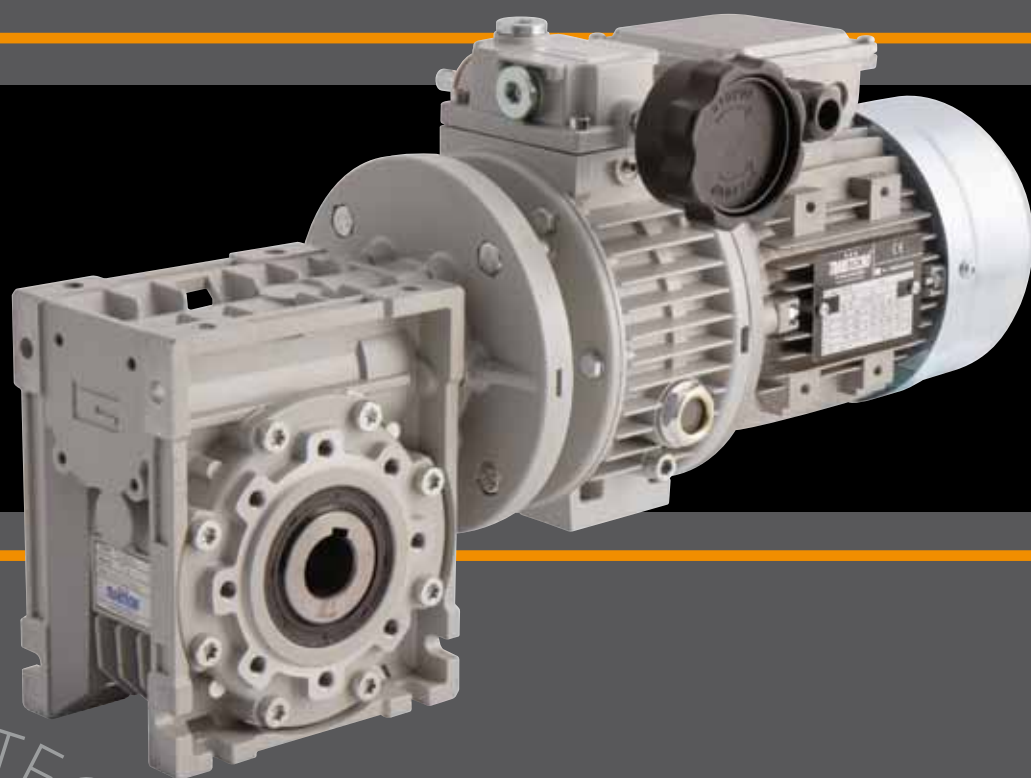
**TRANSTECNO**<sup>TM</sup>  
THE MODULAR GEARMOTOR

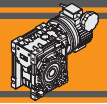
**CMV**

CMV



***MOTOVARIARIDUTTORI A VITE SENZA FINE***  
***MECHANICAL VARIATORS AND WORMGEARBOXES***





<b>Indice</b>	<b>Index</b>	Pag. Page
Caratteristiche tecniche	<i>Technical features</i>	<b>M2</b>
Designazione	<i>Classification</i>	<b>M2</b>
Versioni	<i>Versions</i>	<b>M2</b>
Simbologia	<i>Symbols</i>	<b>M2</b>
Lubrificazione	<i>Lubrication</i>	<b>M3</b>
Posizione di montaggio	<i>Mounting position</i>	<b>M3</b>
Dati tecnici	<i>Technical data</i>	<b>M4</b>
Dimensioni	<i>Dimensions</i>	<b>M8</b>
Accessori	<i>Accessories</i>	<b>M10</b>
Optional	<i>Options</i>	<b>M10</b>

Questa sezione annulla e sostituisce ogni precedente edizione o revisione. Qualora questa sezione non Vi sia giunta in distribuzione controllata, l'aggiornamento dei dati ivi contenuto non è assicurato. **In tal caso la versione più aggiornata è disponibile sul nostro sito internet [www.transtecno.com](http://www.transtecno.com)**

*This section replaces any previous edition and revision. If you obtained this catalogue other than through controlled distribution channels, the most up to date content is not guaranteed. **In this case the latest version is available on our web site [www.transtecno.com](http://www.transtecno.com)***



## Caratteristiche tecniche

## Technical features

I motovariariduttori della serie CMV hanno le seguenti caratteristiche principali:

CMV mechanical variators and wormgearboxes main features:

- Precisione nella regolazione della velocità, contenuta in  $\pm 0.5/1\%$ .
- Campo di regolazione continuo 1:5.
- Le grandezze CM040, 050, 063, 075, 090 e 110 sono costruite con carcassa in alluminio, la grandezza 130 ha la carcassa in ghisa.
- Le grandezze VAM018, 037 e 075 sono costruite con carcassa in alluminio, le altre grandezze in ghisa
- Precision in speed regulation:  $\pm 0.5/1\%$
- Speed range 1:5
- Die-cast aluminum housing on CM040, 050, 063, 075, 090 and 110. Cast iron housing on CM130.
- Die-cast aluminum housing on VAM018, 037 and 075. Cast iron housing on the other sizes.

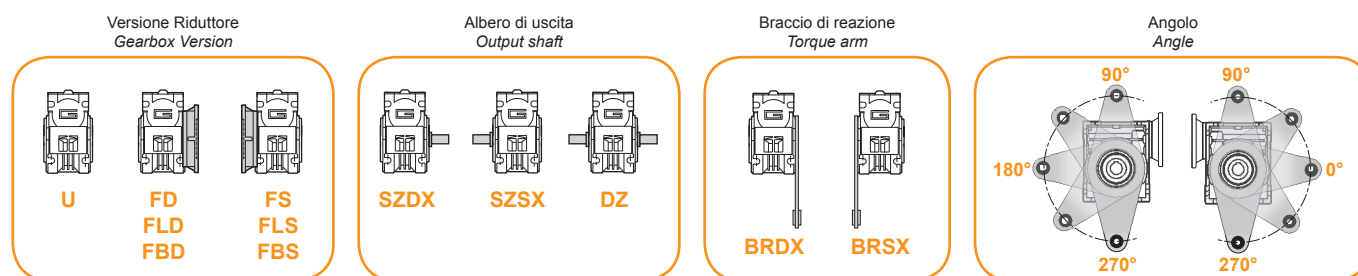
## Designazione

## Classification

MOTOVARIARIDUTTORE / MECHANICAL VARIATOR AND GEARBOX								
CMV	040/037	FD	20	SZDX	BRSX	90	B3/1	VS
Tipo Type	Grandezza Size	Versione Version	Rapporto Ratio	Albero di uscita Output shaft	Braccio di reazione Torque arm	Angolo Angle	Pos. di montaggio Mounting position	Opzioni Options
CMV	040/018 — 130/40	U FD FS FBD FBS FLD FLS	vedi tabelle see tables	SZDX SZSX DZ	BRDX BRSX	0° 90° 180° 270°	Vedi pag. L3 See page L3	VS

MOTORE / MOTOR				
0.37kW	4p	3ph	50Hz	T1
Potenza Power	Poli Poles	Fasi Phases	Frequenza Frequency	Pos. morsetteria Terminal box pos.
Vedi tabelle See tables	2p 4p	1ph 3ph	50Hz 60Hz	Vedi pag. L3 See page L3



## Simbologia

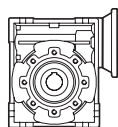
## Symbols

$n_1$ [min <sup>-1</sup> ]	Velocità in ingresso / Input speed	$M_2$ [Nm]	Coppia in uscita in funzione di $P_1$ / Output torque referred to $P_1$
$n_2$ [min <sup>-1</sup> ]	Velocità in uscita / Output speed	sf	Fattore di servizio / Service factor
i	Rapporto di riduzione / Ratio	$R_2$ [N]	Carico radiale ammissibile in uscita / Permitted output radial load
$P_1$ [kW]	Potenza in entrata / Input power	$A_2$ [N]	Carico assiale ammissibile in uscita / Permitted output axial load

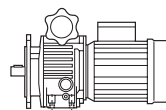


**Lubrificazione**

**Lubrication**



CM



VAM

	Quantità di olio (litri) / Oil quantity (litres)					
	B3	B8	B6	B7	V5	V6
CM040	0.07					
CM050	0.1					
CM063	0.25					
CM075	0.4					
CM090	0.85					
CM110	1.5					
CM130	4.5	3.3	3.5	3.5	4.5	3.3

Lubrificati a vita  
Life lubricated

	Quantità di olio (litri) / Oil quantity (litres)					
	VAM					
	018	037	075	15	22	40
B5	0.13	0.15	0.33	0.80	1.20	1.20
V1	0.30	0.40	0.85	1.40	2.15	2.15
V3	0.13	0.15	0.33	0.80	1.20	1.20

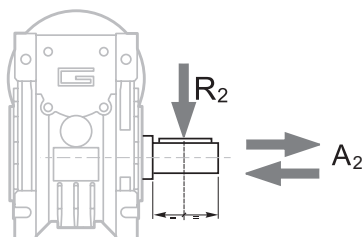
**Posizioni di montaggio**

**Mounting positions**



**Carichi radiali**

**Radial loads**

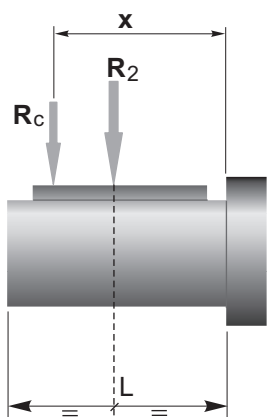


$$A_2 = R_2 \times 0.2$$

$n_2$ [min <sup>-1</sup> ]	$R_2$ [N]						
	CM040	CM050	CM063	CM075	CM090	CM110	CM130
187	1264	1770	2445	2824	3161	5058	5732
140	1392	1949	2692	3110	3481	5570	6313
93	1596	2234	3085	3564	3990	6384	7235
70	1754	2456	3392	3918	4386	7018	7953
56	1890	2646	3654	4221	4725	7560	8567
47	2004	2805	3874	4475	5009	8014	9083
35	2210	3095	4273	4937	5526	8842	10021
28	2381	3334	4603	5318	5953	9524	10794
23	2542	3559	4915	5678	6356	10170	11526
18	2759	3862	5334	6162	6897	11036	12507
14	3000	4200	5800	6700	7500	12000	13600

Quando il carico radiale risultante non è applicato sulla mezza-  
 ria dell'albero occorre calcolare quello effettivo con la seguente  
 formula:

*When the resulting radial load is not applied on the centre line  
 of the shaft it is necessary to calculate the effective load with the  
 following formula:*



	CM						
	040	050	063	075	090	110	130
<b>a</b>	84	101	120	131	182	176	188
<b>b</b>	64	76	95	101	122	136	148
<b>R<sub>2MAX</sub></b>	3000	4200	5800	6700	7500	12000	13600

$$R_c = \frac{R_2 \cdot a}{(b + x)} \leq R_{2MAX}$$

$$R \leq R_c$$

a, b = valori riportati nella tabella  
 a, b = values given in the table



**Dati tecnici**

**Technical data**

P <sub>1</sub> [kW]	velocità massima max speed			velocità minima min speed			i	
	n <sub>2</sub> [min <sup>-1</sup> ]	M <sub>2</sub> [Nm]	sf	n <sub>2</sub> [min <sup>-1</sup> ]	M <sub>2</sub> [Nm]	sf		
63C4 n <sub>i</sub> =1400 [min <sup>-1</sup> ]	<b>176</b>	8	5.6	<b>34.0</b>	15	5.2	5	<b>CMV 040/018</b>
	<b>117</b>	12	4.3	<b>22.7</b>	22	3.8	7.5	
	<b>88.0</b>	16	3.3	<b>17.0</b>	29	2.9	10	
	<b>58.7</b>	22	2.5	<b>11.3</b>	39	2.2	15	
	<b>44.0</b>	28	1.6	<b>8.5</b>	51	1.5	20	
	<b>35.2</b>	33	1.3	<b>6.8</b>	61	1.1	25	
	<b>29.3</b>	38	1.5	<b>5.7</b>	65	1.4	30	
	<b>22.0</b>	46	1.1	<b>4.3</b>	79	0.9	40	
	<b>17.6</b>	54	0.8	<b>3.4</b>	89	0.8	50	
	<b>22.0</b>	47	1.8	<b>4.3</b>	81	1.7	40	
63C2 n <sub>i</sub> =2800 [min <sup>-1</sup> ]	<b>17.6</b>	56	1.4	<b>3.4</b>	91	1.4	50	<b>CMV 050/018</b>
	<b>14.7</b>	63	1.2	<b>2.8</b>	100	1.1	60	
	<b>11.0</b>	73	0.9	<b>2.1</b>	116	0.8	80	
	<b>8.8</b>	82	0.8	<b>1.7</b>	129	0.7	100	
	<b>14.7</b>	66	2.1	<b>2.8</b>	105	2.0	60	
71B4 n <sub>i</sub> =1400 [min <sup>-1</sup> ]	<b>11.0</b>	79	1.6	<b>2.1</b>	122	1.5	80	<b>CMV 063/018</b>
	<b>8.8</b>	89	1.4	<b>1.7</b>	133	1.2	100	

P <sub>1</sub> [kW]	velocità massima max speed			velocità minima min speed			i	
	n <sub>2</sub> [min <sup>-1</sup> ]	M <sub>2</sub> [Nm]	sf	n <sub>2</sub> [min <sup>-1</sup> ]	M <sub>2</sub> [Nm]	sf		
71B4 n <sub>i</sub> =1400 [min <sup>-1</sup> ]	<b>66.7</b>	36	2.7	<b>13.3</b>	65	2.5	15	<b>CMV 050/037</b>
	<b>50.0</b>	45	1.8	<b>10.0</b>	82	1.7	20	
	<b>40.0</b>	54	1.4	<b>8.0</b>	96	1.3	25	
	<b>33.3</b>	61	1.6	<b>6.7</b>	104	1.6	30	
	<b>25.0</b>	74	1.1	<b>5.0</b>	127	1.1	40	
	<b>20.0</b>	89	0.9	<b>4.0</b>	144	0.9	50	
	<b>16.7</b>	99	0.8	<b>3.3</b>	158	0.7	60	
	<b>25.0</b>	78	2.1	<b>5.0</b>	130	2.0	40	
	<b>20.0</b>	92	1.6	<b>4.0</b>	150	1.5	50	
	<b>16.7</b>	104	1.4	<b>3.3</b>	166	1.3	60	
63C2 n <sub>i</sub> =2800 [min <sup>-1</sup> ]	<b>12.5</b>	125	1.0	<b>2.5</b>	192	1.0	80	<b>CMV 063/037</b>
	<b>10.0</b>	141	0.9	<b>2.0</b>	210	0.8	100	
	<b>16.7</b>	110	2.1	<b>3.3</b>	176	2.0	60	
	<b>12.5</b>	132	1.6	<b>2.5</b>	206	1.5	80	
	<b>10.0</b>	150	1.3	<b>2.0</b>	228	1.2	100	
71B2 n <sub>i</sub> =2800 [min <sup>-1</sup> ]	<b>10.0</b>	165	1.9	<b>2.0</b>	252	1.7	100	<b>CMV 090/037</b>

P <sub>1</sub> [kW]	velocità massima max speed			velocità minima min speed			i	
	n <sub>2</sub> [min <sup>-1</sup> ]	M <sub>2</sub> [Nm]	sf	n <sub>2</sub> [min <sup>-1</sup> ]	M <sub>2</sub> [Nm]	sf		
63C2 n <sub>i</sub> =2800 [min <sup>-1</sup> ]	<b>352</b>	7	5.5	<b>68.0</b>	16	3.8	5	<b>CMV 040/018</b>
	<b>235</b>	11	4.0	<b>45.3</b>	23	2.8	7.5	
	<b>176</b>	14	3.2	<b>34.0</b>	30	2.2	10	
	<b>117</b>	21	2.2	<b>22.7</b>	42	1.6	15	
	<b>88.0</b>	27	1.5	<b>17.0</b>	53	1.1	20	
	<b>70.4</b>	31	1.2	<b>13.6</b>	63	0.8	25	
	<b>58.7</b>	36	1.3	<b>11.3</b>	72	1.0	30	
	<b>44.0</b>	44	1.0	<b>8.5</b>	88	0.7	40	
	<b>88.0</b>	27	2.7	<b>17.0</b>	54	1.9	20	
	<b>70.4</b>	32	2.2	<b>13.6</b>	64	1.4	25	
71B4 n <sub>i</sub> =1400 [min <sup>-1</sup> ]	<b>58.7</b>	37	2.4	<b>11.3</b>	74	1.7	30	<b>CMV 050/018</b>
	<b>44.0</b>	46	1.7	<b>8.5</b>	90	1.2	40	
	<b>35.2</b>	54	1.3	<b>6.8</b>	105	1.0	50	
	<b>29.3</b>	61	1.1	<b>5.7</b>	116	0.8	60	
	<b>35.2</b>	56	2.4	<b>6.8</b>	108	1.8	50	
	<b>29.3</b>	64	2.0	<b>5.7</b>	121	1.5	60	
	<b>22.0</b>	78	1.5	<b>4.3</b>	143	1.1	80	
	<b>17.6</b>	88	1.3	<b>3.4</b>	160	0.9	100	
71B4 n <sub>i</sub> =1400 [min <sup>-1</sup> ]	<b>200</b>	13	3.6	<b>40.0</b>	24	3.3	5	<b>CMV 040/037</b>
	<b>133</b>	19	2.7	<b>26.7</b>	35	2.4	7.5	
	<b>100</b>	25	2.1	<b>20.0</b>	45	1.9	10	
	<b>66.7</b>	35	1.6	<b>13.3</b>	62	1.4	15	
	<b>50.0</b>	44	1.0	<b>10.0</b>	80	0.9	20	
	<b>40.0</b>	53	0.8	<b>8.0</b>	96	0.7	25	
	<b>33.3</b>	59	0.9	<b>6.7</b>	103	0.9	30	

P <sub>1</sub> [kW]	velocità massima max speed			velocità minima min speed			i	
	n <sub>2</sub> [min <sup>-1</sup> ]	M <sub>2</sub> [Nm]	sf	n <sub>2</sub> [min <sup>-1</sup> ]	M <sub>2</sub> [Nm]	sf		
71B2 n <sub>i</sub> =2800 [min <sup>-1</sup> ]	<b>400</b>	10	3.6	<b>80.0</b>	25	2.4	5	<b>CMV 040/037</b>
	<b>267</b>	14	2.6	<b>53.3</b>	37	1.8	7.5	
	<b>200</b>	19	2.1	<b>40.0</b>	47	1.4	10	
	<b>133</b>	27	1.5	<b>26.7</b>	66	1.0	15	
	<b>100</b>	35	1.0	<b>20.0</b>	84	0.7	20	
	<b>400</b>	65	6.6	<b>80</b>	26	4.4	5	
	<b>267</b>	15	4.7	<b>53.3</b>	37	3.2	7.5	
	<b>200</b>	19	3.8	<b>40.0</b>	48	2.5	10	
	<b>133</b>	28	2.6	<b>26.7</b>	68	1.7	15	
	<b>100</b>	36	1.8	<b>20.0</b>	85	1.2	20	
71B4 n <sub>i</sub> =1400 [min <sup>-1</sup> ]	<b>80.0</b>	43	1.4	<b>16.0</b>	101	0.9	25	<b>CMV 050/037</b>
	<b>66.7</b>	49	1.6	<b>13.3</b>	117	1.1	30	
	<b>50.0</b>	62	1.1	<b>10.0</b>	142	0.8	40	
	<b>400</b>	36	3.3	<b>20.0</b>	88	2.1	20	
	<b>80.0</b>	44	2.6	<b>16.0</b>	105	1.6	25	
	<b>66.7</b>	51	2.9	<b>13.3</b>	115	2.0	30	
	<b>50.0</b>	64	2.0	<b>10.0</b>	144	1.4	40	
	<b>40.0</b>	76	1.6	<b>8.0</b>	171	1.1	50	
	<b>33.3</b>	87	1.3	<b>6.7</b>	191	0.9	60	
	<b>25.0</b>	107	1.0	<b>5.0</b>	226	0.7	80	
71B4 n <sub>i</sub> =1400 [min <sup>-1</sup> ]	<b>50.0</b>	66	3.2	<b>10.0</b>	156	2.2	40	<b>CMV 063/037</b>
	<b>40.0</b>	78	2.4	<b>8.0</b>	183	1.7	50	
	<b>33.3</b>	91	2.0	<b>6.7</b>	205	1.4	60	
	<b>25.0</b>	113	1.5	<b>5.0</b>	240	1.0	80	
	<b>20.0</b>	130	1.2	<b>4.0</b>	270	0.8	100	
	<b>33.3</b>	95	3.1	<b>6.7</b>	212	2.2	60	
	<b>25.0</b>	118	2.3	<b>5.0</b>	254	1.6	80	
	<b>20.0</b>	139	1.8	<b>4.0</b>	288	1.3	100	



**Dati tecnici**

**Technical data**

P <sub>1</sub> [kW]	velocità massima max speed			velocità minima min speed			i	
	n <sub>2</sub> [min <sup>-1</sup> ]	M <sub>2</sub> [Nm]	sf	n <sub>2</sub> [min <sup>-1</sup> ]	M <sub>2</sub> [Nm]	sf		

P <sub>1</sub> [kW]	velocità massima max speed			velocità minima min speed			i	
	n <sub>2</sub> [min <sup>-1</sup> ]	M <sub>2</sub> [Nm]	sf	n <sub>2</sub> [min <sup>-1</sup> ]	M <sub>2</sub> [Nm]	sf		

**0.75**

80B4 n <sub>1</sub> =1400 [min <sup>-1</sup> ]	<b>200</b>	26	3.4	<b>40</b>	49	3.0	5	<b>CMV 050/075</b>	
	<b>133</b>	38	2.4	<b>26.7</b>	71	2.2	7.5		
	<b>100</b>	50	1.9	<b>20.0</b>	91	1.7	10		
	<b>66.7</b>	71	1.3	<b>13.3</b>	130	1.2	15		
	<b>50.0</b>	90	0.9	<b>10.0</b>	163	0.8	20		
	<b>40.0</b>	108	0.7	<b>8.0</b>	192	0.6	25		
	<b>33.3</b>	122	0.8	<b>6.7</b>	209	0.8	30		
	<b>66.7</b>	73	2.4	<b>13.3</b>	128	2.4	15		<b>CMV 063/075</b>
	<b>50.0</b>	94	1.6	<b>10.0</b>	161	1.6	20		
	<b>40.0</b>	113	1.2	<b>8.0</b>	189	1.2	25		
	<b>33.3</b>	126	1.5	<b>6.7</b>	216	1.4	30		
	<b>25.0</b>	156	1.0	<b>5.0</b>	259	1.0	40		
<b>20.0</b>	183	0.8	<b>4.0</b>	300	0.8	50			
<b>40.0</b>	110	2.1	<b>8.0</b>	198	1.9	25	<b>CMV 075/075</b>		
<b>33.3</b>	122	2.5	<b>6.7</b>	227	2.3	30			
<b>25.0</b>	154	1.7	<b>5.0</b>	274	1.6	40			
<b>20.0</b>	192	1.3	<b>4.0</b>	318	1.2	50			
<b>16.7</b>	220	1.1	<b>3.3</b>	353	1.0	60			
<b>12.5</b>	264	0.8	<b>2.5</b>	413	0.7	80			
<b>25.0</b>	173	2.7	<b>5.0</b>	293	2.6	40	<b>CMV 090/075</b>		
<b>20.0</b>	204	2.0	<b>4.0</b>	342	1.9	50			
<b>16.7</b>	234	1.6	<b>3.3</b>	382	1.5	60			
<b>12.5</b>	288	1.2	<b>2.5</b>	451	1.1	80			
<b>10.0</b>	330	1.0	<b>2.0</b>	504	0.9	100			
<b>12.5</b>	302	2.0	<b>2.5</b>	490	1.8	80		<b>CMV 110/075</b>	
<b>10.0</b>	354	1.6	<b>2.0</b>	552	1.4	100			

**1.1**

80B2 n <sub>1</sub> =2800 [min <sup>-1</sup> ]	<b>400</b>	20	3.2	<b>80</b>	51	2.2	5	<b>CMV 050/075</b>	
	<b>267</b>	29	2.3	<b>53.3</b>	75	1.6	7.5		
	<b>200</b>	38	1.9	<b>40.0</b>	96	1.3	10		
	<b>133</b>	55	1.3	<b>26.7</b>	135	0.9	15		
80B2 n <sub>1</sub> =2800 [min <sup>-1</sup> ]	<b>400</b>	20	5.8	<b>80</b>	53	3.7	5	<b>CMV 063/075</b>	
	<b>267</b>	29	4.2	<b>53.3</b>	76	2.8	7.5		
	<b>200</b>	38	3.4	<b>40.0</b>	98	2.2	10		
	<b>133</b>	56	2.4	<b>26.7</b>	139	1.6	15		
	<b>100</b>	72	1.6	<b>20.0</b>	175	1.1	20		
	<b>80.0</b>	88	1.3	<b>16.0</b>	210	0.8	25		
	<b>66.7</b>	102	1.4	<b>13.3</b>	230	1.0	30		
	<b>50.0</b>	128	1.0	<b>10.0</b>	288	0.7	40		
	<b>100</b>	74	2.7	<b>20.0</b>	180	1.7	20		<b>CMV 075/075</b>
	<b>80.0</b>	90	2.0	<b>16.0</b>	216	1.3	25		
	<b>66.7</b>	104	2.3	<b>13.3</b>	252	1.5	30		
	<b>50.0</b>	132	1.6	<b>10.0</b>	312	1.1	40		
<b>40.0</b>	158	1.2	<b>8.0</b>	366	0.8	50			
<b>33.3</b>	182	1.0	<b>6.7</b>	410	0.7	60			
<b>66.7</b>	107	3.8	<b>13.3</b>	252	2.5	30	<b>CMV 090/075</b>		
<b>50.0</b>	137	2.6	<b>10.0</b>	317	1.8	40			
<b>40.0</b>	165	1.9	<b>8.0</b>	366	1.4	50			
<b>33.3</b>	190	1.5	<b>6.7</b>	425	1.1	60			
<b>25.0</b>	236	1.1	<b>5.0</b>	509	0.8	80			
<b>20.0</b>	277	0.9	<b>4.0</b>	576	0.6	100			

**1.1**

80B2 n <sub>1</sub> =2800 [min <sup>-1</sup> ]	<b>40.0</b>	169	3.4	<b>8.0</b>	390	2.3	50	<b>CMV 110/075</b>	
	<b>33.3</b>	198	2.6	<b>6.7</b>	446	1.8	60		
	<b>25.0</b>	246	1.9	<b>5.0</b>	547	1.3	80		
	<b>20.0</b>	290	1.5	<b>4.0</b>	624	1.0	100		
90S4 n <sub>1</sub> =1400 [min <sup>-1</sup> ]	<b>200</b>	40	4.0	<b>40</b>	74	3.8	5	<b>CMV 063/15</b>	
	<b>133</b>	58	2.9	<b>26.7</b>	108	2.7	7.5		
	<b>100</b>	76	2.3	<b>20.0</b>	139	2.1	10		
	<b>66.7</b>	109	1.6	<b>13.3</b>	192	1.6	15		
	<b>50.0</b>	140	1.1	<b>10.0</b>	241	1.1	20		
	<b>40.0</b>	169	0.8	<b>8.0</b>	284	0.8	25		
	<b>33.3</b>	189	1.0	<b>6.7</b>	324	1.0	30		
	<b>50.0</b>	144	1.8	<b>10.0</b>	248	1.7	20		<b>CMV 075/15</b>
	<b>40.0</b>	173	1.3	<b>8.0</b>	297	1.3	25		
	<b>33.3</b>	197	1.6	<b>6.7</b>	340	1.5	30		
	<b>25.0</b>	245	1.1	<b>5.0</b>	410	1.1	40		
	<b>25.0</b>	259	1.8	<b>5.0</b>	439	1.7	40		
<b>20.0</b>	306	1.4	<b>4.0</b>	513	1.2	50			
<b>16.7</b>	351	1.1	<b>3.3</b>	572	1.0	60			
<b>16.7</b>	367	1.9	<b>3.3</b>	616	1.6	60	<b>CMV 110/15</b>		
<b>12.5</b>	454	1.3	<b>2.5</b>	734	1.2	80			
<b>10.0</b>	531	1.0	<b>2.0</b>	828	0.9	100			

**1.5**

90L4 n <sub>1</sub> =1400 [min <sup>-1</sup> ]	<b>200</b>	53	3.0	<b>40</b>	98	2.8	5	<b>CMV 063/15</b>	
	<b>133</b>	77	2.2	<b>26.7</b>	144	2.0	7.5		
	<b>100</b>	101	1.7	<b>20.0</b>	185	1.6	10		
	<b>66.7</b>	146	1.2	<b>13.3</b>	256	1.2	15		
	<b>50.0</b>	187	0.8	<b>10.0</b>	322	0.8	20		
90L4 n <sub>1</sub> =1400 [min <sup>-1</sup> ]	<b>133</b>	78	3.3	<b>26.7</b>	146	3.1	7.5	<b>CMV 075/15</b>	
	<b>100</b>	102	2.7	<b>20.0</b>	187	2.5	10		
	<b>66.7</b>	149	2.0	<b>13.3</b>	263	1.9	15		
	<b>50.0</b>	192	1.3	<b>10.0</b>	331	1.3	20		
	<b>40.0</b>	231	1.0	<b>8.0</b>	396	1.0	25		
	<b>33.3</b>	263	1.2	<b>6.7</b>	454	1.1	30		
	<b>25.0</b>	326	0.8	<b>5.0</b>	547	0.8	40		
	<b>133</b>	79	4.9	<b>26.7</b>	149	4.4	7.5		<b>CMV 090/15</b>
	<b>100</b>	104	4.0	<b>20.0</b>	192	3.6	10		
	<b>66.7</b>	151	3.1	<b>13.3</b>	270	3.0	15		
	<b>50.0</b>	197	2.2	<b>10.0</b>	346	2.2	20		
	<b>40.0</b>	240	1.6	<b>8.0</b>	414	1.6	25		
<b>33.3</b>	274	1.9	<b>6.7</b>	475	1.8	30			
<b>25.0</b>	346	1.3	<b>5.0</b>	586	1.3	40	<b>CMV 110/15</b>		
<b>20.0</b>	408	1.0	<b>4.0</b>	684	0.9	50			
<b>16.7</b>	468	0.8	<b>3.3</b>	763	0.8	60			
<b>40.0</b>	243	2.9	<b>8.0</b>	432	2.8	25			
<b>33.3</b>	270	3.2	<b>6.7</b>	482	3.1	30			
<b>25.0</b>	350	2.4	<b>5.0</b>	624	2.1	40			
<b>20.0</b>	426	1.8	<b>4.0</b>	732	1.6	50			
<b>16.7</b>	490	1.4	<b>3.3</b>	821	1.2	60			
<b>12.5</b>	586	1.0	<b>2.5</b>	979	0.9	80			
<b>10.0</b>	710	0.8	<b>2.0</b>	1104	0.7	100			



**Dati tecnici**

**Technical data**

P <sub>1</sub> [kW]	velocità massima max speed			velocità minima min speed			i	
	n <sub>2</sub> [min <sup>-1</sup> ]	M <sub>2</sub> [Nm]	sf	n <sub>2</sub> [min <sup>-1</sup> ]	M <sub>2</sub> [Nm]	sf		

P <sub>1</sub> [kW]	velocità massima max speed			velocità minima min speed			i	
	n <sub>2</sub> [min <sup>-1</sup> ]	M <sub>2</sub> [Nm]	sf	n <sub>2</sub> [min <sup>-1</sup> ]	M <sub>2</sub> [Nm]	sf		

**1.5**

90L4 n <sub>i</sub> =1400 [min <sup>-1</sup> ]	<b>20.0</b>	438	2.4	<b>4.0</b>	732	2.0	50	<b>CMV 130/15</b>
	<b>16.7</b>	504	1.9	<b>3.3</b>	821	1.7	60	
	<b>12.5</b>	614	1.4	<b>2.5</b>	979	1.2	80	
	<b>10.0</b>	708	1.1	<b>2.0</b>	1152	1.0	100	

**2.2**

100LA4 n <sub>i</sub> =1400 [min <sup>-1</sup> ]	<b>33.3</b>	416	2.8	<b>6.7</b>	713	2.4	30	<b>CMV 130/22</b>
	<b>25.0</b>	533	2.1	<b>5.0</b>	907	1.8	40	
	<b>20.0</b>	657	1.6	<b>4.0</b>	1098	1.4	50	
	<b>16.7</b>	756	1.3	<b>3.3</b>	1231	1.1	60	
	<b>12.5</b>	922	1.0	<b>2.5</b>	1469	0.8	80	

**2.2**

90L2 n <sub>i</sub> =2800 [min <sup>-1</sup> ]	<b>400</b>	41	2.8	<b>80.0</b>	105.6	1.9	5	<b>CMV 063/15</b>	
	<b>267</b>	60	2.0	<b>53.3</b>	151	1.4	7.5		
	<b>200</b>	78	1.6	<b>40.0</b>	197	1.1	10		
		<b>133</b>	115	1.2	<b>26.7</b>	277	0.8	15	
		<b>267</b>	60	3.1	<b>53.3</b>	151	2.1	7.5	<b>CMV 075/15</b>
		<b>200</b>	79	2.6	<b>40.0</b>	199	1.7	10	
		<b>133</b>	115	1.9	<b>26.7</b>	284	1.2	15	
		<b>100</b>	151	1.3	<b>20.0</b>	360	0.9	20	
		<b>80.0</b>	185	1.0	<b>16.0</b>	432	0.6	25	
		<b>66.7</b>	213	1.1	<b>13.3</b>	504	0.7	30	
		<b>267</b>	61	4.5	<b>53.3</b>	153	3.1	7.5	<b>CMV 090/15</b>
		<b>200</b>	80	3.8	<b>40.0</b>	202	2.5	10	
	<b>133</b>	117	3.0	<b>26.7</b>	292	1.9	15		
	<b>100</b>	153	2.2	<b>20.0</b>	374	1.4	20		
	<b>80.0</b>	189	1.6	<b>16.0</b>	450	1.0	25		
	<b>66.7</b>	219	1.8	<b>13.3</b>	504	1.3	30		
	<b>50.0</b>	281	1.3	<b>10.0</b>	634	0.9	40		
	<b>40.0</b>	338	0.9	<b>8.0</b>	732	0.7	50		
	<b>80.0</b>	191	2.8	<b>16.0</b>	462	1.8	25	<b>CMV 110/15</b>	
	<b>66.7</b>	219	3.1	<b>13.3</b>	518	2.0	30		
	<b>50.0</b>	288	2.2	<b>10.0</b>	662	1.5	40		
	<b>40.0</b>	347	1.7	<b>8.0</b>	780	1.2	50		
	<b>33.3</b>	405	1.3	<b>6.7</b>	893	0.9	60		
	<b>25.0</b>	504	0.9	<b>5.0</b>	1094	0.7	80		
	<b>50.0</b>	281	3.1	<b>10.0</b>	653	1.9	40	<b>CMV 130/15</b>	
	<b>40.0</b>	347	2.4	<b>8.0</b>	804	1.5	50		
	<b>33.3</b>	405	1.9	<b>6.7</b>	922	1.2	60		
	<b>25.0</b>	504	1.4	<b>5.0</b>	1114	0.9	80		
	<b>20.0</b>	603	1.0	<b>4.0</b>	1272	0.7	100		

**3**

100LB4 n <sub>i</sub> =1400 [min <sup>-1</sup> ]	<b>133</b>	157	1.7	<b>26.7</b>	292	1.5	7.5	<b>CMV 075/40</b>
	<b>100</b>	204	1.3	<b>20.0</b>	374	1.3	10	
	<b>66.7</b>	299	1.0	<b>13.3</b>	526	0.9	15	
		<b>133</b>	158	2.4	<b>26.7</b>	299	2.2	
	<b>100</b>	209	2.0	<b>20.0</b>	384	1.8	10	<b>CMV 090/40</b>
	<b>66.7</b>	302	1.6	<b>13.3</b>	540	1.5	15	
	<b>50.0</b>	394	1.1	<b>10.0</b>	691	1.1	20	
	<b>40.0</b>	480	0.8	<b>8.0</b>	828	0.8	25	
	<b>33.3</b>	547	1.0	<b>6.7</b>	950	0.9	30	
	<b>66.7</b>	317	2.5	<b>13.3</b>	598	1.9	15	<b>CMV 110/40</b>
	<b>50.0</b>	418	1.8	<b>10.0</b>	778	1.6	20	
	<b>40.0</b>	504	1.4	<b>8.0</b>	912	1.5	25	
	<b>33.3</b>	598	1.5	<b>6.7</b>	1080	1.2	30	
	<b>25.0</b>	787	1.1	<b>5.0</b>	1382	0.9	40	
	<b>20.0</b>	936	0.8	<b>4.0</b>	1608	0.9	50	
	<b>16.7</b>	1080	0.6	<b>3.3</b>	1872	0.7	60	
	<b>40.0</b>	486	2.2	<b>8.0</b>	876	1.7	25	<b>CMV 130/40</b>
	<b>33.3</b>	554	2.1	<b>6.7</b>	950	1.8	30	
	<b>25.0</b>	710	1.5	<b>5.0</b>	1210	1.3	40	
	<b>20.0</b>	876	1.2	<b>4.0</b>	1464	1.0	50	
	<b>16.7</b>	1008	1.0	<b>3.3</b>	1642	0.9	60	
	<b>12.5</b>	1229	0.7	<b>2.5</b>	1958	0.6	80	

**4**

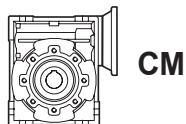
112M4 n <sub>i</sub> =1400 [min <sup>-1</sup> ]	<b>133</b>	211	1.8	<b>26.7</b>	398	1.7	7.5	<b>CMV 090/40</b>
	<b>100</b>	278	1.5	<b>20.0</b>	512	1.4	10	
	<b>66.7</b>	403	1.2	<b>13.3</b>	720	1.1	15	
	<b>50.0</b>	525	0.8	<b>10.0</b>	922	0.8	20	
	<b>100</b>	275	2.7	<b>20.0</b>	518	2.4	10	<b>CMV 110/40</b>
	<b>66.7</b>	398	2.0	<b>13.3</b>	739	1.8	15	
	<b>50.0</b>	525	1.4	<b>10.0</b>	973	1.3	20	
	<b>40.0</b>	648	1.1	<b>8.0</b>	1184	1.0	25	
	<b>33.3</b>	720	1.2	<b>6.7</b>	1248	1.2	30	
	<b>25.0</b>	960	0.9	<b>5.0</b>	1664	0.8	40	
	<b>40.0</b>	648	1.6	<b>8.0</b>	1168	1.3	25	<b>CMV 130/40</b>
	<b>33.3</b>	739	1.6	<b>6.7</b>	1267	1.3	30	
	<b>25.0</b>	947	1.2	<b>5.0</b>	1613	1.0	40	
	<b>20.0</b>	1168	0.9	<b>4.0</b>	1952	0.8	50	
	<b>16.7</b>	1344	0.7	<b>3.3</b>	2189	0.6	60	

100LA4 n <sub>i</sub> =1400 [min <sup>-1</sup> ]	<b>133</b>	117	2.2	<b>26.7</b>	219	2.0	7.5	<b>CMV 075/22</b>
	<b>100</b>	153	1.8	<b>20.0</b>	281	1.7	10	
	<b>66.7</b>	224	1.3	<b>13.3</b>	394	1.2	15	
	<b>133</b>	119	3.2	<b>26.7</b>	224	2.9	7.5	<b>CMV 090/22</b>
	<b>100</b>	157	2.7	<b>20.0</b>	288	2.4	10	
	<b>66.7</b>	227	2.1	<b>13.3</b>	405	2.0	15	
	<b>50.0</b>	295	1.5	<b>10.0</b>	518	1.4	20	
	<b>40.0</b>	360	1.1	<b>8.0</b>	621	1.1	25	
	<b>33.3</b>	410	1.3	<b>6.7</b>	713	1.2	30	
	<b>133</b>	119	5.7	<b>26.7</b>	224	5.1	7.5	<b>CMV 110/22</b>
	<b>100</b>	157	4.7	<b>20.0</b>	292	4.3	10	
	<b>66.7</b>	227	3.5	<b>13.3</b>	410	3.3	15	
	<b>50.0</b>	299	2.5	<b>10.0</b>	540	2.4	20	
	<b>40.0</b>	369	1.9	<b>8.0</b>	648	1.9	25	
	<b>33.3</b>	421	2.1	<b>6.7</b>	724	2.0	30	
	<b>25.0</b>	540	1.5	<b>5.0</b>	936	1.4	40	
	<b>20.0</b>	639	1.2	<b>4.0</b>	1098	1.1	50	
	<b>16.7</b>	734	0.9	<b>3.3</b>	1231	0.8	60	



**Dimensioni**

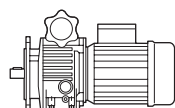
**Dimensions**



**CM**

CM.. - CM..F - CM..FB - CM..FL																									
	A	C	D <sub>H8</sub>	E	F	G	G1	H	I	L	M	N <sub>h8</sub>	N1	O	P	Q	R	S	T	V	K	KE	a	b	t
<b>040</b>	70	100	18	121.5	43	70	78	50	40	71	75	60	36.5	6.5	87	55	71.5	6.5	26	35	60	M6x8 (n.4)	45°	6	20.8
<b>050</b>	80	120	25	144	49	80	92	60	50	85	85	70	43.5	8.5	100	64	84	7	30	40	70	M8x10 (n.4)	45°	8	28.3
<b>063</b>	100	144	25	174	67	95	112	72	63	103	95	80	53	8.5	110	80	102	8	36	50	85	M8x10 (n.8)	45°	8	28.3
<b>075</b>	120	172	28	205	72	112.5	120	86	75	112	115	95	57	11	140	93	119	10	40	60	90	M8x14 (n.8)	45°	8	31.3
<b>090</b>	140	205	35	238	74	129.5	140	102.5	90	130	130	110	67	13	160	102	135	11	45	70	100	M10x18 (n.8)	45°	10	38.3
<b>110</b>	170	252.5	42	295	—	160	155	127.5	110	144	165	130	74	14	200	125	167.5	14	50	85	115	M10x18 (n.8)	45°	12	45.3
<b>130</b>	200	292.5	45	335	—	180	170	147.5	130	155	215	180	81	16	250	140	187.5	15	60	100	120	M12x21 (n.8)	45°	14	48.8

	CM..F								CM..FB								CM..FL							
	a1	KA	KB	KC	KM	KN <sub>H8</sub>	KO	KP	KQ	KA	KB	KC	KM	KN <sub>H8</sub>	KO	KP	KA	KB	KC	KM	KN <sub>H8</sub>	KO	KP	KQ
<b>040</b>	45°	67	7.5	4	80-95	60	9(n.4)	110	95	80	8.5	5	115-125	95	9.5(n.4)	140	97	7.5	4.5	80-95	60	9(n.4)	110	95
<b>050</b>	45°	90	9	5	90-110	70	11(n.4)	125	110	89	9	5	130-145	110	9.5(n.4)	160	120	9	5	90-110	70	11(n.4)	125	110
<b>063</b>	45°	82	10	6	150-160	115	11(n.4)	180	142	98	10	5	165-180	130	11(n.4)	200	112	10	6	150-160	115	11(n.4)	180	142
<b>075</b>	45°	111	13	6	165-180	130	14(n.4)	200	170	—	—	—	—	—	—	—	—	—	—	—	—	—	—	—
<b>090</b>	45°	111	13	6	175-190	152	14(n.4)	210	200	—	—	—	—	—	—	—	—	—	—	—	—	—	—	—
<b>110</b>	45°	131	15	6	230	170	14(n.8)	280	260	—	—	—	—	—	—	—	—	—	—	—	—	—	—	—
<b>130</b>	45°	140	15	6	255	180	16(n.8)	320	290	—	—	—	—	—	—	—	—	—	—	—	—	—	—	—



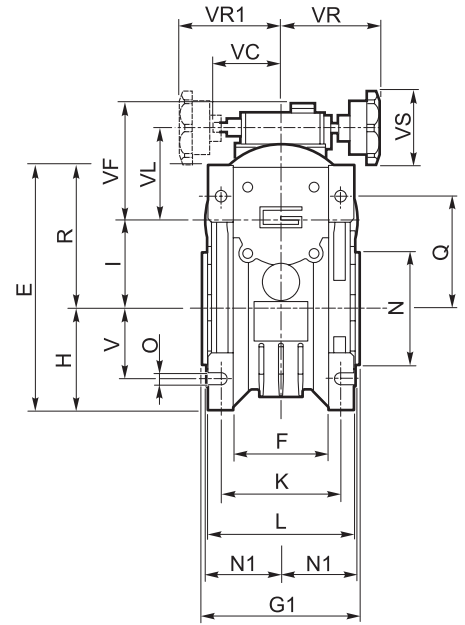
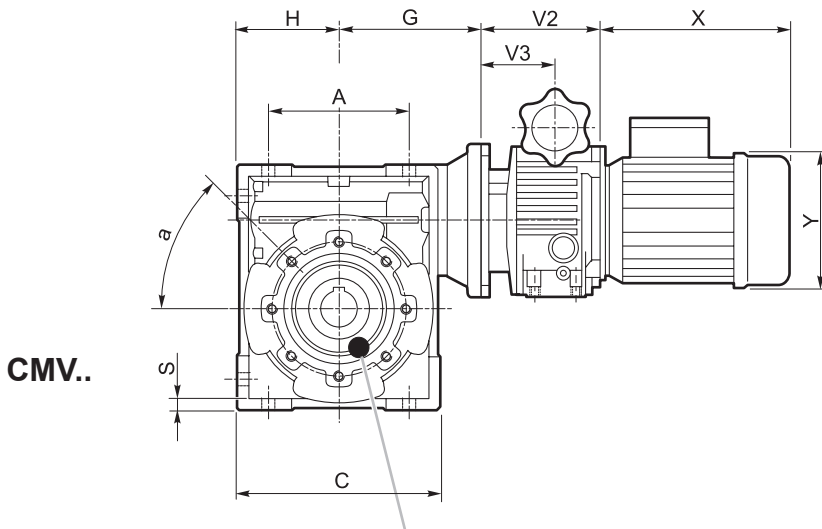
**VAM**

	VAM							
	V2	V3	VC	VF	VL	VR	VR1	VS
<b>018</b>	112.5	64.5	71	111	78	110	110	85
<b>037</b>	110	74	71	123	90	110	110	85
<b>075</b>	139	85.5	79	140	107	120	120	85
<b>15</b>	188	115	—	144	122	120	120	85
<b>22</b>	208	131	—	188	150	160	—	110
<b>40</b>	208	131	—	188	150	160	—	110

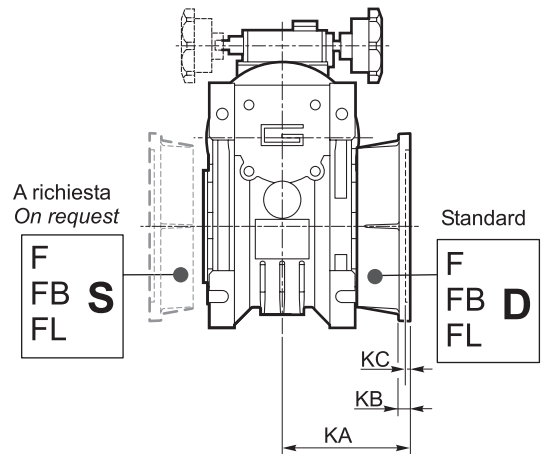
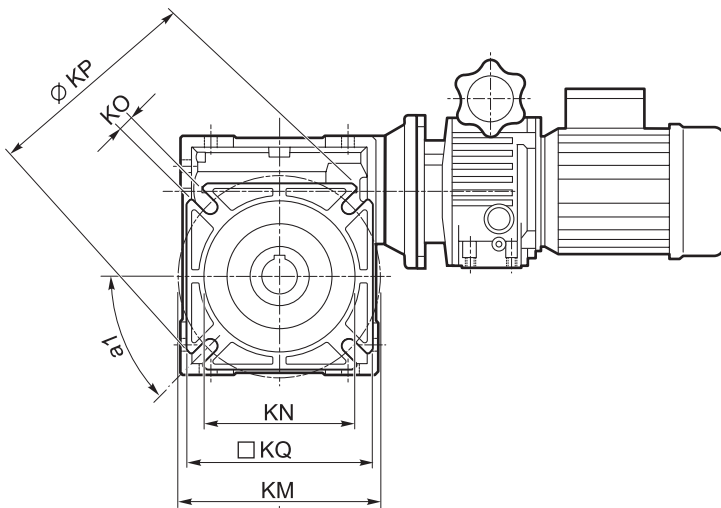
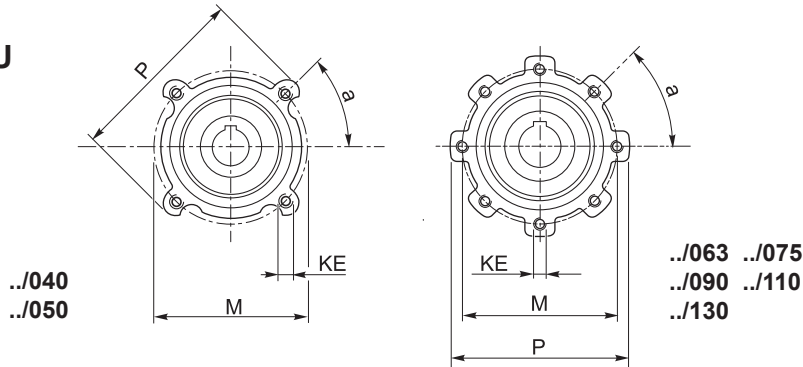


**Dimensioni**

**Dimensions**

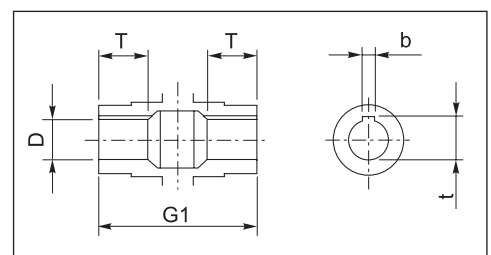
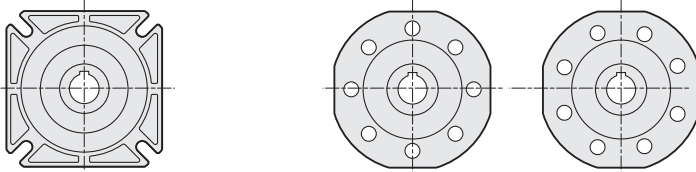


**CMV..U**



**CMV..F** (../040 - ../090)  
**CMV..FB** (../040 - ../063)  
**CMV..FL** (../040 - ../063)

**CMV..F**  
 (../110) (../130)



Albero lento cavo / Hollow output shaft

**CMV**



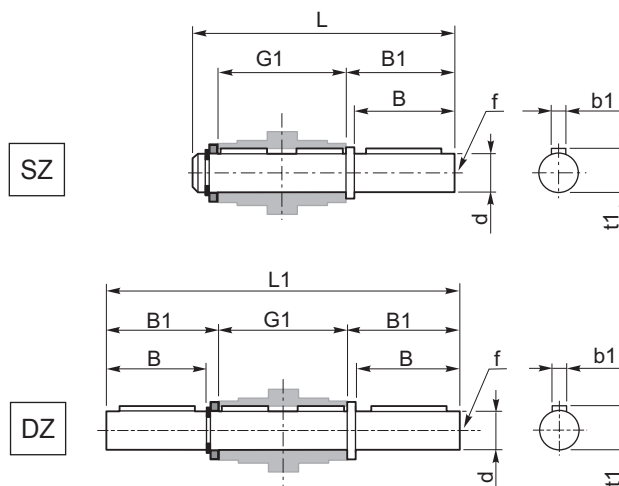
**Accessori**

**Accessories**

**Albero lento semplice e doppio**

**Single and double output shaft**

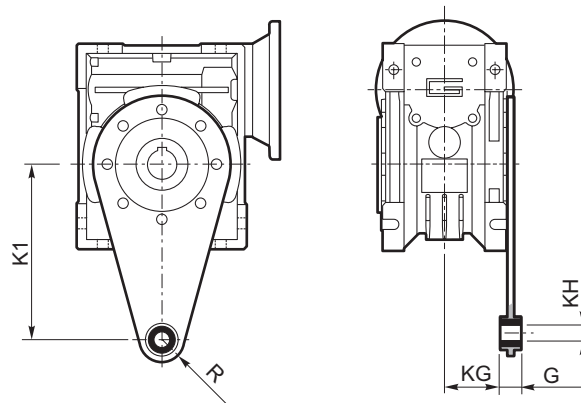
	d <sub>h7</sub>	B	B1	G1	L	L1	f	b1	t1
CM 040	18	40	43	78	128	164	M6	6	20.5
CM 050	25	50	53.5	92	153	199	M10	8	28
CM 063	25	50	53.5	112	173	219	M10	8	28
CM 075	28	60	63.5	120	192	247	M10	8	31
CM 090	35	80	84.5	140	234	309	M12	10	38
CM 110	42	80	84.5	155	249	324	M16	12	45
CM 130	45	80	85	170	265	340	M16	14	48.5



**Braccio di reazione**

**Torque arm**

	K1	G	KG	KH	R
CM 040	100	14	31	10	18
CM 050	100	14	38	10	18
CM 063	150	14	47.5	10	18
CM 075	200	25	46.5	20	30
CM 090	200	25	56.5	20	30
CM 110	250	30	62	25	35
CM 130	250	30	69	25	35

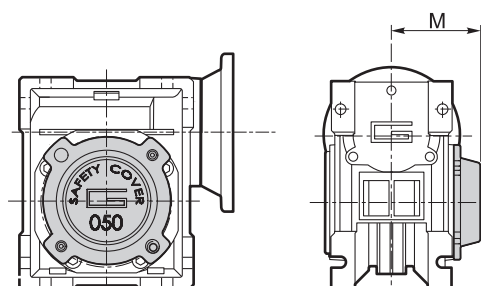
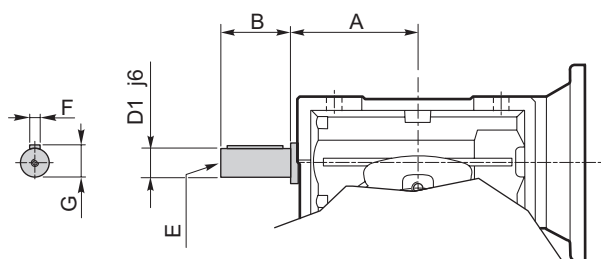


**Opzioni**

**Options**

**VS - Vite sporgente / Extended input shaft**

**SC - Safety cover**



	A	B	D <sub>1 j6</sub>	E	F	G
CM 040	53	23	11	M5	4	12.5
CM 050	64	30	14	M6	5	16
CM 063	75	40	19	M6	6	21.5
CM 075	90	50	24	M8	8	27
CM 090	108	50	24	M8	8	27
CM 110	—	—	—	—	—	—
CM 130	—	—	—	—	—	—

	M
CM 040	54.5
CM 050	62.5
CM 063	73
CM 075	79
CM 090	94
CM 110	102
CM 130	117

## HEADQUARTERS



TRANSTECNO SRL  
Via Caduti di Sabbiano, 11 D/E  
40011 Anzola Emilia (BO) - ITALY  
Tel. +39.051.6425811  
Fax +39.051.734943  
info@transtecno.com  
www.transtecno.com

## MANUFACTURING PLANT



HANGZHOU TRANSTECNO  
POWER TRANSMISSIONS CO; LTD  
26, No.1 Street  
Hangzhou Economic  
& Technological  
Development Area  
Hangzhou - CHINA  
Tel. +86.571.86921603  
Fax +86.571.86921810  
info-china@transtecno.com  
www.transtecno.cn

## SALES OFFICES & WAREHOUSES



GEARTECNO ITALIA SRL  
Via Ferrari, 27/11  
41043 Fraz. Corlo,  
Formigine (MO) - ITALY  
Tel. +39.059.557522  
Fax +39.059.557439  
info@geartecno.com  
www.geartecno.com



GEARTECNO HOLLAND B.V.  
De Stuwdam 43  
ind. terrein Wieken/Vinkenhoeft  
3815 KM Amersfoort  
THE NETHERLANDS  
Tel. +31.(0)33.4519505  
Fax +31.(0)33.4519506  
info@geartecno.nl  
www.geartecno.nl

  
**TRANSTECNO**<sup>TM</sup>  
THE MODULAR GEARMOTOR

[www.transtecno.com](http://www.transtecno.com)

## SALES OFFICES



SALES OFFICE BRAZIL  
Rua Dr. Freire Alemão 155 / 402  
CEP. 90450-060  
Auxiliadora Porto Alegre-RS-BRAZIL  
Tel. +55.51.3251.5447  
Fax +55.51.3251.5447  
Mobile +55 51 811 45 962  
braziloffice@transtecno.com  
www.transtecno.com.br



SALES OFFICE OCEANIA  
Unit 7, 387-393 Old Geelong  
Road, Hoppers Crossing,  
Victoria 3029 - AUSTRALIA  
Tel. +61.03.9369.9774  
Fax +61.03.9369.9775  
Mobile +61.0438.060.997  
oceaniaoffice@transtecno.com



SALES OFFICE SPAIN  
C/Major, Nr.1  
17256 Fontclara - SPAIN  
Tel. +34.626141978  
spainoffice@transtecno.com  
www.transtecno.es



SALES OFFICE EASTERN  
EUROPE & MIDDLE EAST  
St. Magnolienweg 4  
D-31860 Emmerthal - GERMANY  
Tel. +49.5151.963076  
Fax +49.5151.963076  
Mobile +49.172.4044907  
emeoffice@transtecno.com



SALES OFFICE USA  
509 10th St Alton, Iowa,  
51003 - USA  
Tel: +1 712-540-9080  
usaoffice@transtecno.com



SALES OFFICE SOUTH KOREA  
D-248, Namdong Industrial  
Complex 631,  
Gojan-dong Namdong-gu Incheon,  
KOREA  
Tel. +82 70 8288 2107  
Fax. +82 32 815 2107  
Mobile: +82 10 5094 2107  
koreaoffice@transtecno.com



SALES OFFICE GUANGZHOU  
Room 832, Wannu International  
No.167,  
Linhe west road, Guangzhou City,  
CHINA  
Tel:+ 86 20 38776057  
Fax: + 86 20 38776127  
Mobile: + 86.139.25169633  
guangzhouoffice@transtecno.com