



STANDARD CONNECTOR SERIES	pg. 04
SMALL FORM FACTORS	pg. 24
SPECIALTY PRODUCTS	pg. 40
FERRULES AND SLEEVES	pg. 48
POLISHING SYSTEMS	pg. 54

STANDARD CONNECTOR SERIES

SC-UPC Premium Connector	pg. 06	ST Standard Connector	pg. 16
SC-APC Premium Connector	pg. 06	ST Adapter	pg. 16
SC Standard Connector	pg. 07	SC-ST Hybrid Adapter	pg. 17
SC Connector Kit	pg. 07	FC-SC Hybrid Adapter	pg. 17
SC Duplex Clip	pg. 07	FC-ST Hybrid Adapter	pg. 17
SC Flex Angle Boot	pg. 08	DIN Connector & Adapter	pg. 18
SC Connector 4.8mm	pg. 09	D4 Connector & Adapter	pg. 18
SC Crimp Tool	pg. 09	SMA Connector & Adapter	pg. 18
SC TOP Adapter	pg. 10	SC Connector Boot	pg. 19
SC Premium Series	pg. 12	ST & FC Connector Boot	pg. 20
SC Adapter Series	pg. 13	E 2000 Connector	pg. 21
FC UPC Premium Connector	pg. 14	E 2000 Accessories	pg. 22
FC APC Premium Connector	pg. 14	E 2000 Adapter	pg. 22
FC Standard Connector	pg. 15		
FC Adapter	pg. 15		
ST Premium Connector	pg. 16		

SC FC ST DIN D4

SENKO Connector and Adapter Series

SENKO Offers 3 Product Grades to Meet Customer Needs

PREMIUM 1 PC Connector Series



Pre-assembled 1pc Type Connector

This premium connector is available in SC, FC, ST, and DIN and D4. This connector was designed to meet the highest requirements in the market.

The premium SC and FC Connector is designed to meet and exceed the Verizon FOC TPR requirement, for the OSP application, or for anywhere customers need a high quality product. Premium SM and Premium Low Loss SM (LS) are available. Typical IL of 0.05 for LS SM Ferrule, and 0.08 for Premium UPC. Various option for boots are available.

STANDARD 1 PC Connector Series



Pre-assembled 1pc Connector

This connector series (SC, FC, and ST) gives value for cost. Using high quality components, these connectors meet IEC, and the general requirement of GR-326.

The same crimp and boot can be interchanged for all the Standard Connector Series (SC, FC, ST).

CONNECTOR KIT Multi-Piece Connector



Multi-Piece Connector Kit

(Ferrule to be Purchased Separately)

Manufactured to the original NTT designed SC Connector kit, it is supplied as a multi-piece unassembled connector. Using high quality components, this connector meets IEC, and the general requirement of GR-326.

Ferrule with Flange are to be ordered separately.

FEATURES COMPARISON CHART

For SC Premium and SC Standard	PREMIUM LS CONNECTOR	PREMIUM SM CONNECTOR	STANDARD CONNECTOR	CONNECTOR KIT
Typical IL Against Master (UPC)	0.05	0.08	0.12	***
Typical IL Random Mating (UPC)	0.07	0.12	0.25	***
Verizon FOC TPR-9409	○	○		
GR-326 Core Issue 4	○	○	△	
IEC, TIA/EIA JIS Spec	○	○	○	○
IEC Random Mating Grade A*	○			***
IEC Random Mating Grade B*	○	○		***
IEC Random Mating Grade C*	○	○	○	***
RoHS Compliant	○	○	○	○
UL 94V-0	○	○	○	○
4 Position Tuning After Assembly (SC, FC)**	○	○		
MINI Boots	○	○		
Standard Boots	○	○	○	
Long Boots	○	○		○
Premium Crimp Ring	○	○		
Standard Crimp Ring			○	
Pre-assembled 1pc Body	○	○	○	
Push Pull Mechanism	○	○	○	○
Free Floating Ferrule	○	○	○	○
Metal Back Post	○	○	○	○
Premium Duplex Clip	○	○		
Standard Duplex Clip			○	○
Crimp Tool CRT-401	○	○	○	CRT-501

Note: *Based on IEC61300-3-34 **Only for UPC Connector ***Depend on ferrule selected

TECHNICAL SPECIFICATIONS Premium and Standard Connector

PRODUCT SERIES	TYPE OF CONNECTOR SENKO P/N	IL AGAINST MASTER (dB)		IL RANDOM MATING (dB)	
		Average IL	Maximum IL	Average IL	Maximum IL
Premium Low Loss SM	SC (254-199-xxx), FC (351-109-xx), (215-109-xx)	0.05	0.15	0.07	0.15 ^{*1}
Premium SM	SC (254-193-xxx), FC (351-103-xx), ST (215-103-xx)	0.08	0.20	0.12	0.25 ^{*2}
Premium Low Loss APC	SC APC (291/294-199-xx), FC APC (292/293-209-xx)	0.07	0.15	0.09	0.20
Premium APC	SC APC (291/294-193-xx), FC APC (292/293-203-xx)	0.10	0.25	0.14	0.30
Premium MM Connector	SC (254-291-xxx), FC (351-201-xx), ST (215-201-xx)	0.10	0.20	-	-
Standard SM	SC (231-191-xxx), FC (341-101-xx), (233-101-xx)	0.12	0.30	0.25	0.50 ^{*3}
Standard MM	SC (231-291-xxx), FC (341-201-xx), (233-201-xx)	0.15	0.30	-	-
	Singlemode	Multimode			
Operating Temperature	-40°C to +75°C	-40°C to +75°C			
Durability	<0.1dB typical change, 500 matings*	<0.1dB typical change, 500 matings*			

IEC Random mating test 61300-3-34
 1 - To meet IEC Random Mating Grade A (≤0.07dB mean, ≤0.15dB max for >97% of sample. Grade A Spec is not finalized, above is a recommendation
 2 - To meet IEC Random Mating Grade B (≤0.12dB mean, ≤0.25dB max for >97% of sample
 3 - To meet IEC Random Mating Grade C (≤0.25dB mean, ≤0.50dB max for >97% of sample

SC PREMIUM One Piece Adapter



The SENKO patented design, one piece adapters is stronger than the conventional, seam-welded SC adapter giving improved side loading strength and the preventing adapter breakage.

SC Simplex adapters have been tested to the Verizon FOC TPR 9409 standard and sleeves used in this adapter have been tested and passed the TRP requirements. High TG hooks are used to meet the GR-326 requirements. Shuttered versions are also available.



The FC Adapter is available in 3 different configurations: the original Square Body, the high density Oval type and the Round type. All three different types have a high quality, durable, Ni-Plated Brass body.

(2.15 Key Width available for UPC and 2.05 Key Width available for APC).

ADAPTER SPECIFICATION	ZIRCONIA SLEEVE		METAL SLEEVE	
	Typical	Maximum	Typical	Maximum
For SC, FC and ST Adapters				
Insertion Loss	0.05	0.20	0.10	0.30
Sleeve / Ferrule Withdraw Force	200gf - 600gf			
Operating Temperature	-40° to +75°			
Durability	<0.1dB typical change, 500 matings*			

Note: Zirconia tested with SMF Fiber, metal sleeve tested with MMF

1 PC Connector (254 Series)

SC UPC PREMIUM



900µm MINI Boot



2.0mm MINI Boot



3.0mm MINI Boot

CONNECTOR		FERRULE TYPE		HOUSING		BOOT TYPE		BOOT COLOR	
254	Premium	193	SM: Premium 125µm	5	Aqua	7	Long 3.0mm	1	Blue
		199	SM: Low Loss 125µm	6	Blue	A	Long 2.0mm	2	Black
		291	MM: Premium 127µm	7	Black	M	Standard 900µm	3	Green
				8	Red	N	Standard 2.0mm	4	Red
				9	Beige	P	Standard 3.0mm	6	Yellow
						J	MINI 900µm	7	White
						K	MINI 2.0mm	8	Beige
						L	MINI 3.0mm	9	Aqua
						F	Flex Angled Boot 3.0mm		
						G	Flex Angled Boot 2.0mm		

254 - 193 - 6F1 ORDER CODE example

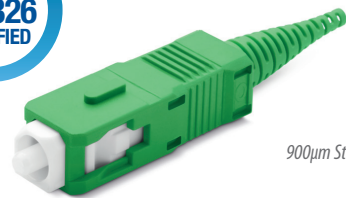
Note: Other ferrule ID size are available
SM 81µm SM 126µm SM 125.5µm MM 230µm MM 144µm

Features:

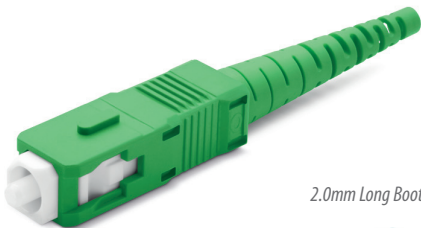
- SENKO's flagship Premium Connector series
- Designed to exceed the requirement of Verizon FOC TPR 9409 requirements
- Premium Low Loss SM, typical IL against Master 0.05dB
- Premium Low Loss SM to meet IEC61300-3-34 Grade A random mating requirement of Max 0.15dB
- Premium SM typical IL against Master 0.08dB
- Premium SM to meet IEC61300-3-34 Grade B random mating requirement of Max 0.25dB
- 4 direction tuning feature to improve random mating IL
- Crimp tool to be used CRT-401

1 PC Connector (291/294 Series)

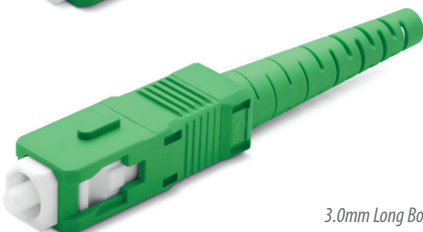
SC APC PREMIUM



900µm Standard



2.0mm Long Boot



3.0mm Long Boot

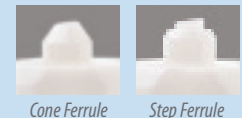
CONNECTOR		FERRULE TYPE		POLISH		BOOT TYPE	
291	Premium Step	193	SM: Premium 125µm	1	No Angle	7	Long 3.0mm
294	Premium Cone	199	SM: Low Loss 125µm	2	8° Pre-Angle	A	Long 2.0mm
						M	Standard 900µm
						N	Standard 2.0mm
						P	Standard 3.0mm
						J	MINI 900µm
						K	MINI 2.0mm
						L	MINI 3.0mm
						F	Flex Angled Boot 3.0mm
						G	Flex Angled Boot 2.0mm

291 - 193 - 1F ORDER CODE example

Note: Other ferrule ID size are available
SM 81µm SM 126µm SM 125.5µm

Features:

- SENKO's flagship Premium Connector series
- Designed to exceed the requirement of Verizon FOC TPR 9409 requirement
- Premium Low Loss SM, typical IL against Master 0.07dB
- Premium SM typical IL against Master 0.08dB
- Cone Ferrule type and Step Ferrule type available
- Option of an 8 degree pre-angle cut available
- Crimp tool to be used CRT-401



SC UPC STANDARD

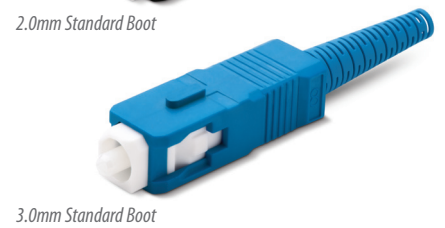
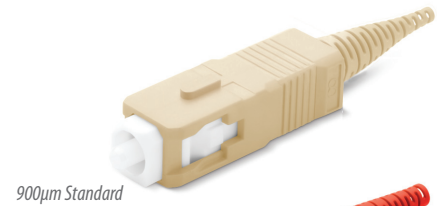
CONNECTOR		FERRULE TYPE	HOUSING	BOOT TYPE	BOOT COLOR
231	Standard	191 SM: Standard 125.5µm	5 Aqua	P Standard 3.0mm	1 Blue
		291 MM: Standard 127µm	6 Blue	N Standard 2.0mm	2 Black
			7 Black	M Standard 900µm	4 Red
			8 Red	J MINI 900µm	6 Yellow
			9 Beige		8 Beige

231 - 191 - 7N4 ORDER CODE example

Features:

- Pre-assembled one piece design to reduce assembly time
- Typical IL against master to be 0.12dB Max 0.3dB
- Meets and exceeds the TIA/EIA, IEC and JIS SC Specification
- Crimp tool to be used CRT-401

1 PC Connector (231 Series)



SC CONNECTOR KIT

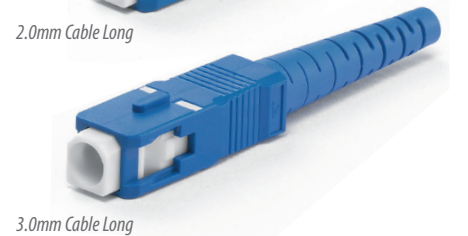
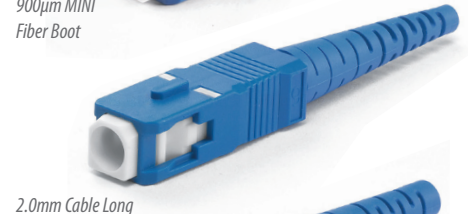
CODE	OUTER HOUSING	BOOT TYPE	BOOT COLOR
132	A11 Blue with White Line	7 3.0mm Cable Long	1 Blue
	B11 Black with White Line	9 2.0mm Cable Long	2 Black
	C11 Beige with White Line	D 900µm MINI Fiber Boot	3 Green
	D11 Green with White Line		4 Red
			8 Beige

132 - A11 - 71 ORDER CODE example

Features:

- The original NTT Style Connector Kit design (*Multi Piece Connector*)
- Various housing and boot color to meet customer need.
- Meets and exceeds the TIA/EIA, IEC and JIS SC Specification
- Ferrule to be ordered separately
- Crimp tool to be used CRT-501

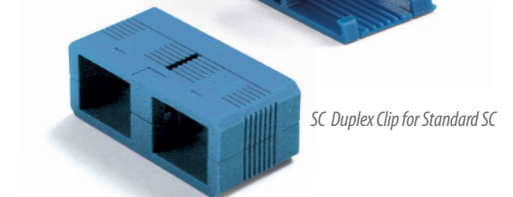
NTT Kit Style (132 Series)



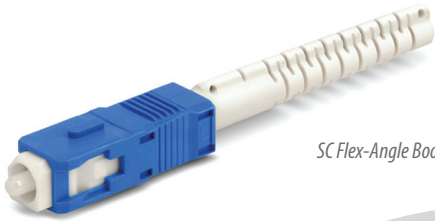
SC DUPLEX CLIP

CLIP	CLIP COLOR
224 SC Duplex Clip for Premium Connector	591 Black
274 SC Duplex Clip for Standard & Connector Kit	592 Green
	593 Blue
	594 Beige
	595 Red
	596 Aqua

224 - 591 ORDER CODE example



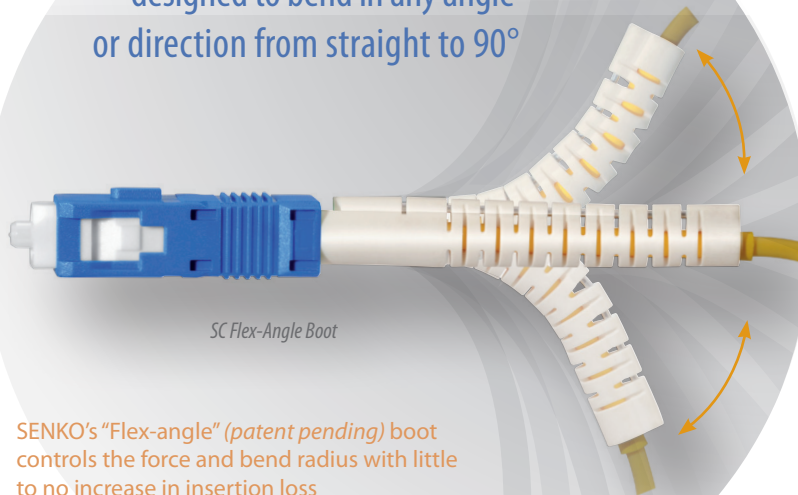
SC FLEX ANGLE BOOT



SC Flex-Angle Boot

SENKO's new 2.0mm and 3.0mm boot addition for the Premium and Standard SC connectors. The Flex-Angle boot is designed to bend and maintain any angle or direction from straight to 90°. The boot is molded over a single stainless steel wire and can be easily positioned by hand. The internal wire holds the boot at the desired angle or direction.

The Flex-Angle boot is designed to bend in any angle or direction from straight to 90°



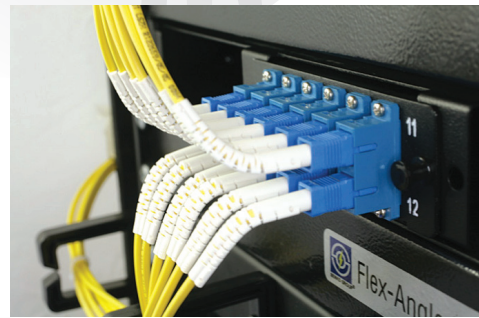
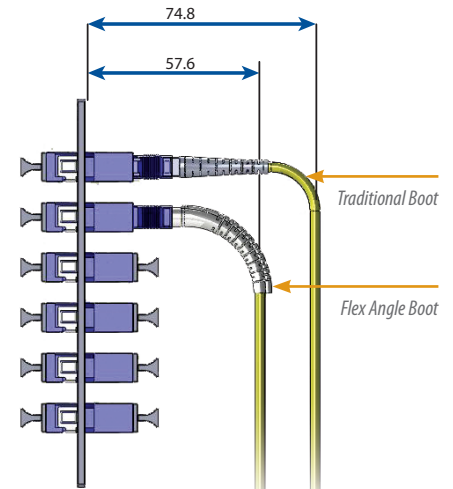
SC Flex-Angle Boot



SENKO's "Flex-angle" (*patent pending*) boot controls the force and bend radius with little to no increase in insertion loss

Application number: 12/421,020

Flex Angle Boot Reduces Boot Protrusion From Panel

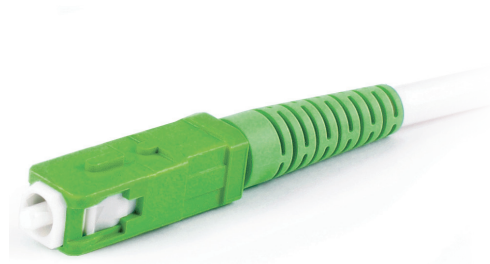


PRODUCT SERIES	BOOT	TYPE OF CONNECTOR
Premium SC 2.0mm	HW-25001-xx	254-xxx-xGx
Premium SC 3.0mm	HW-25002-xx	254-xxx-xFx
Standard SC 2.0mm	HW-25001-xx	231-xxx-xGx
Standard SC 3.0mm	HW-25002-xx	231-xxx-xFx

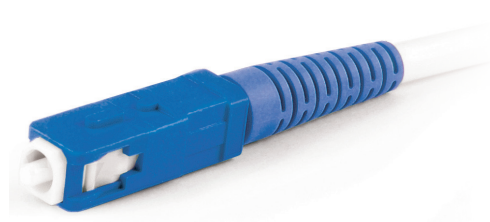
SC CONNECTOR 4.8

SPECIFICATION	SINGLEMODE	MULTIMODE
For SC Connector 4.8	Typical	Typical
Insertion Loss	Premium Connector UPC	0.08dB
	Premium Connector APC	0.10dB
Return Loss	≥ 55dB typical (PC) ≥ 68dB typical (APC)	
Durability	< 0.1dB change, 500 matings	
Operating Temperature	-40 to +75°C	

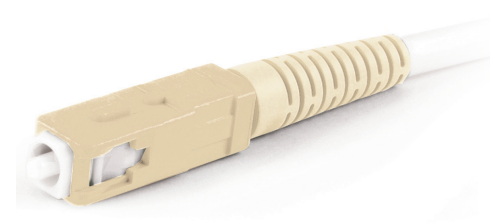
Note: Specifications shown above were obtained using SENKO recommended products and procedures.



4.8mm APC Connector



4.8mm UPC Connector



4.8mm MM Connector

CONNECTOR	FERRULE TYPE	HOUSING	BOOT TYPE	BOOT COLOR
554	193 SM: Premium 125µm	6 Blue	1 4.8mm Boot	1 Blue
	199 SM: Low Loss 125µm	8 Beige		8 Beige
	291 MM: 127µm			

554 - 193 - 611 ORDER CODE example

Note: Other ferrule ID size are available
SM 81µm SM 126µm SM 125.5µm

CONNECTOR	FERRULE TYPE	POLISH	BOOT TYPE
591 SC Premium APC Step	193 SM: Premium 125µm	1 No Angle	1 4.8mm Boot
594 SC Premium APC Cone	199 SM: Low Loss 125µm	2 8° Pre-Angle	

291 - 193 - 1F ORDER CODE example

Note: Other ferrule ID size are available
SM 81µm SM 126µm SM 125.5µm

Features:

- Compliance with Telcordia, TIA/IEA, IEC and JIS interface specifications
- Low insertion loss & back reflection*
- One-piece construction & pull-proof design
- Free-floating ceramic ferrule
- Precision anti-rotation key and corrosion resistant body
- UL-rated plastic housing and boots in a variety of colors
- Telcordia style boots
- Adapters with choice of metal or plastic housing, mount styles & flange options

SC CRIMP TOOL

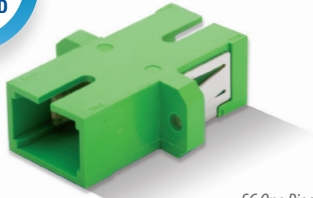
CODE	CONNECTOR TYPE
CRT	401 SC, FC, ST One Piece Connectors
	448 4.8mm Connector (591, 594, 554 series)
	501 SC Connector Kit 132 series

CRT - 401 ORDER CODE example



Premium Adapter 242/247 series

SC PREMIUM ONE PIECE SIMPLEX ADAPTER



SC One Piece Adapter



SC One Piece Adapter without Flange

CODE	TYPE	COLOR	SLEEVE TYPE	HOOK MATERIAL	SHUTTER
242 Flange	1 Simplex	0 Blue	1 Zirconia	1 High Tg	N No Shutter
247 No Flange		1 Green	2 Metal		
		2 Beige			
		3 Black			
		9 Aqua			
		T Clear			

247 - 101 - 1N ORDER CODE example

Note: Custom colors available upon request

Features:

- SENKO's highest quality adapter series
- Patented one piece housing design prevents housing breakage
- Designed to exceed the requirement of the Verizon FOC TPR 9409 requirement
- High TG hook prevents unwanted hook opening in OSP application
- Typical insertion loss under 0.05dB and Max IL of 0.20dB
- Various housing color to meet customer's requirement
- Shutter option ready for eye safety

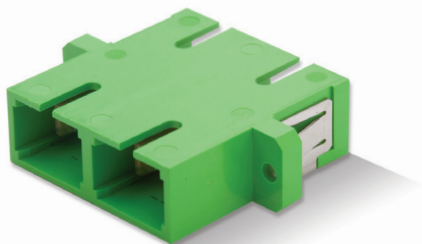
Premium Adapter 242/247 series

SC PREMIUM ONE PIECE DUPLEX ADAPTER

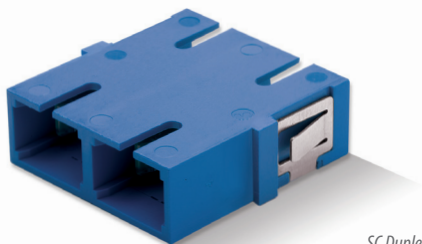
CODE	TYPE	COLOR	SLEEVE TYPE	HOOK MATERIAL	SHUTTER
242 Flange	1 Simplex	0 Blue	1 Zirconia	1 High Tg	N No Shutter
247 No Flange		1 Green	2 Metal		
		2 Beige			
		3 Black			
		9 Aqua			
		T Clear			

247 - 202 - 1N ORDER CODE example

Note: Custom colors available upon request



SC Duplex with Flange



SC Duplex without Flange



SC One Piece Adapter, No Weld Type



Conventional Adapter Welded type

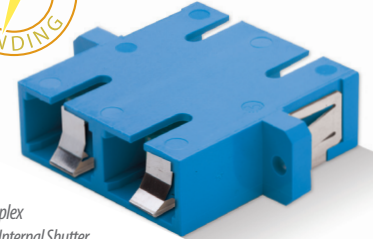
The new one piece housing design prevents breaking of the adapter due to the absence of ultrasonic weld type construction.

SC PREMIUM ONE PIECE ADAPTER WITH SHUTTER

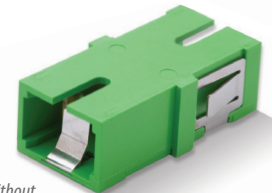
CODE	TYPE	COLOR	SLEEVE TYPE	HOOK MATERIAL	SHUTTER
242	Flange	1 Blue	1 Zirconia	1 High Tg	A Internal Shutter (w/o mark)
247	No Flange	1 Green	2 Metal		C Internal Shutter (w/mark)
		2 Beige			
		3 Black			
		9 Aqua			
		T Clear			

242 - 121 - 1C ORDER CODE example

Internal Shutter



SC Duplex with Internal Shutter

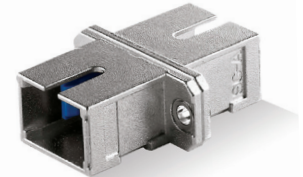


SC Simplex without Flange and Internal Shutter

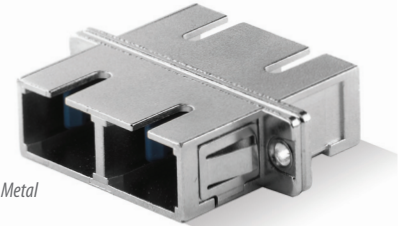
SC METAL ADAPTER

CONNECTOR	HOOK COLOR	SLEEVE
226 Simplex	1 High Tg	1 Zirconia Straight Split
228 Duplex Horizontal		2 Metal Straight Split

226 - 11 ORDER CODE example



SC Simplex Metal Adapter



SC Duplex Metal Adapter

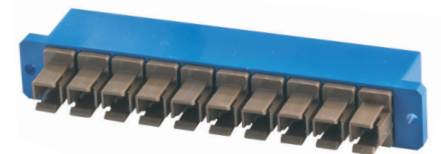
SC SIMPLIFIED CONNECTOR AND ADAPTER

CONNECTOR CODE	FERRULE TYPE	BOOT TYPE	BOOT COLOR
774 SC Simplified Adapter	191 SM: 125.5µm	2 1.0mm Fiber	2 Black

774 - 191 - 22 ORDER CODE example

ADAPTER CODE	TYPE	SLEEVE	HOUSING COLOR
229 SC Simplified Adapter	1 Simplex	1 Zirconia Straight Split	1 Blue
	2 Duplex	2 Metal Straight Split	
	3 8 Ways		
	4 10 Ways		

229 - 111 ORDER CODE example



1 PC Connector (351 Series)

FC UPC PREMIUM



CONNECTOR	FERRULE TYPE	BOOT TYPE	BOOT COLOR
351 Premium	103 SM: Premium 125µm	7 Long 3.0mm	1 Blue
	109 SM: Low Loss 125µm	A Long 2.0mm	2 Black
	201 MM: Premium 127µm	M Standard 900µm	3 Green
		N Standard 2.0mm	4 Red
		P Standard 3.0mm	6 Yellow
		J MINI 900µm	7 White
		K MINI 2.0mm	8 Beige
		L MINI 3.0mm	9 Aqua

351 - 103 - L6 ORDER CODE example

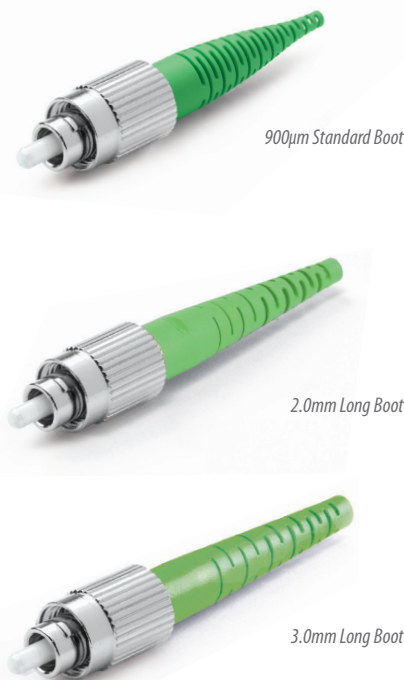
Note: Other ferrule ID size are available
SM 81µm SM 126µm SM 125.5µm MM 230µm MM 144µm

Features:

- SENKO's flagship highest quality Premium Connector Series
- Designed to exceed the requirement of Verizon FOC TPR 9409 requirement
- Premium Low Loss SM, typical IL against Master 0.05dB
- Premium Low Loss to meet IEC61300-3-34 Grade A random mating requirement of Max 0.15dB
- Premium SM typical IL against Master 0.08dB
- Premium SM to meet IEC61300-3-34 Grade B random mating requirement of Max 0.25dB
- 4 directions tuning ferrule to improve random mating IL
- Crimp tool to be used CRT-401

1 PC Connector (292/293 Series)

FC APC PREMIUM



CONNECTOR	FERRULE TYPE	FERRULE POLISH	BOOT TYPE
292 Premium Step	203 SM: Premium 125µm	1 No Angle	7 Long 3.0mm
293 Premium Cone	209 SM: Low Loss 125µm	2 8° Pre-Angle	A Long 2.0mm
			M Standard 900µm
			N Standard 2.0mm
			P Standard 3.0mm
			J MINI 900µm
			K MINI 2.0mm
			L MINI 3.0mm

293 - 203 - 2A ORDER CODE example

Note: Other ferrule ID size are available
SM 81µm SM 126µm SM 125.5µm

Features:

- SENKO's flagship highest quality Premium Connector Series
- Designed to exceed the requirement of Verizon FOC TPR 9409 requirement
- Premium Low Loss SM, typical IL against Master 0.07dB
- Premium SM typical IL against Master 0.08dB
- Cone ferrule type and Step ferrule type available
- Option of an 8 degree pre-angle cut available
- Various choices of boots types
- Crimp tool to be used CRT-401



FC STANDARD

1 PC Connector (341/331 Series)

CONNECTOR	FERRULE TYPE	BOOT TYPE	BOOT COLOR
341 Preassembled 1 PC	101 SM: 125.5µm	P Standard 3.0mm	1 Blue
331 Unassembled Key Ring	201 MM: 127µm	N Standard 2.0mm	2 Black
		M Standard 900µm	4 Red
		J MINI 900µm	6 Yellow
			8 Beige

341 - 101 - J1 ORDER CODE example



900µm Standard Boot



2.0mm Standard Boot



3.0mm Standard Boot

Features:

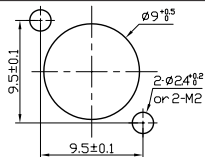
- SENKO's Standard Connector series gives the highest value for cost
- Pre-assembled one piece design and Connector Kit available
- Meets and exceeds the TIA/EIA, IEC and JIS SC Specification
- Typical IL against master to be 0.12dB Max 0.3dB
- Various boot color to meet customer need
- Crimp tool to be used CRT-401

FC ADAPTER

Square (297) and Oval (298)

ADAPTER TYPE	SLEEVE	KEY WIDTH
297 Solid Body	1 Zirconia Straight Split	01 For PC Connector 2.15 +0.05/-0
298 FC Oval Adapter "HD"	2 Metal Straight Split	02 For APC Connector 2.05+/-0.02

297 - 101 ORDER CODE example



Mounting Hole Dimensions

FC Square, Standard Body and Oval Adapter, HD Style

Features:

- FC Square, High Density Oval and Round type available
- UPC type Adapter have Wide key of 2.15mm
- APC type Adapter have Narrow key of 2.05mm
- Typical insertion loss under 0.05dB and Max IL of 0.20dB
- High quality and durable Ni-Plated Brass body



FC Square Adapter, Solid Body



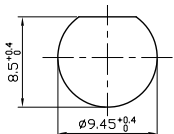
FC Oval Adapter, HD Style

FC ROUND ADAPTER

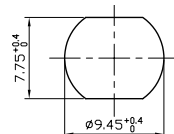
Round (253 type)

CODE	SLEEVE	KEY WIDTH	FLANGE
253 FC Round Adapter "D" & "DD"	1 Zirconia Straight Split	0 For PC Connector 2.15 +0.05/-0	3 D: ∅8.85mm x 7.95mm
	2 Metal Straight Split	2 For APC Connector 2.05 +/- 0.02	4 DD: ∅9.35mm x 7.65mm

253 - 103 ORDER CODE example



FC Round Adapter D Style



FC Round Adapter DD Style

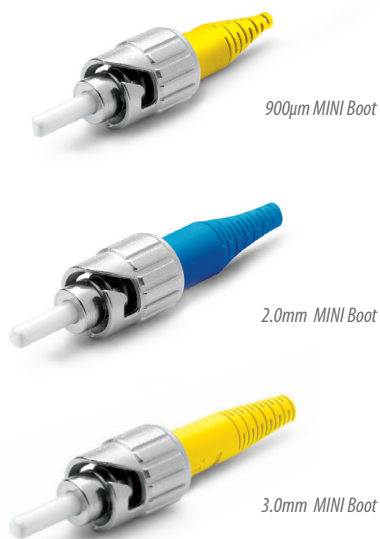
Mounting Hole Dimensions



FC Round Adapter, D Style

1 PC Connector (215 Series)

ST PREMIUM



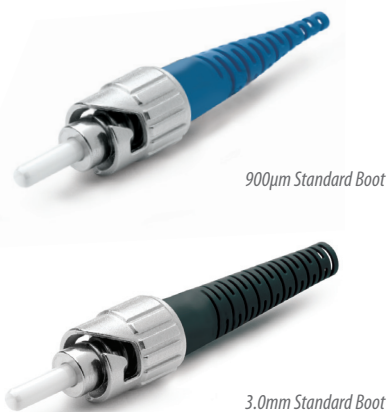
CONNECTOR	FERRULE TYPE	BOOT TYPE	BOOT COLOR
215	103 SM: Premium 125µm	7 Long 3.0mm	1 Blue
	109 SM: Low Loss 125µm	A Long 2.0mm	2 Black
	201 MM: Premium 127µm	M Standard 900µm	3 Green
		N Standard 2.0mm	4 Red
		P Standard 3.0µm	6 Yellow
		J MINI 900µm	7 White
		K MINI 2.0mm	8 Beige
		L MINI 3.0mm	9 Aqua

215 - 103 - 76 ORDER CODE example

Note: Other ferrule ID size are available
SM 81µm SM 126µm SM 125.5µm MM 230µm MM 144µm

1 PC Connector (233 Series)

ST STANDARD



CONNECTOR	FERRULE TYPE	BOOT TYPE	BOOT COLOR
233 ST Standard	101 SM: 125.5µm	P Standard 3.0mm	1 Blue
	201 MM: 127µm	N Standard 2.0mm	2 Black
		M Standard 900µm	4 Red
		J MINI 900µm	6 Yellow
			8 Beige

233 - 101 - P6 ORDER CODE example

ST ADAPTER



CODE	SLEEVE
216 Simplex Metal Housing	101 Zirconia Straight Split
316 Duplex Horizontal Metal Housing	102 Metal Straight Split
317 Duplex Horizontal Plastic Housing	

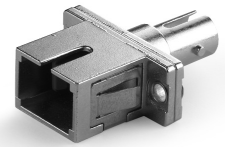
216 - 101 ORDER CODE example

SC-ST HYBRID ADAPTER

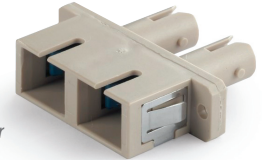
CODE		APPLICATION	SLEEVE
283	Square Flange Simplex (<i>metal</i>)	1 For PC Connector	01 Zirconia Straight Split
286	Rectangular Flange, Simplex (<i>metal</i>)		02 Metal Straight Split
288	Rectangular Flange, Duplex (<i>metal</i>)		
289L	Rectangular Flange, Duplex, Blue* (<i>plastic</i>)		
289T	Rectangular Flange, Duplex, Beige* (<i>plastic</i>)		

288 - 102 ORDER CODE example

- Note:** 1. All adapters listed above are made with metal housing with the exception of the 289 Series, which is made with polymer housing
 2. * For No Flange option, add NF to order code. Available for 289L and 289T adapters only



SC-ST Simplex Adapter with Rectangular Flange



SC-ST Duplex Adapter with Flange



SC-ST Adapter with Square Flange

FC-SC HYBRID ADAPTER

CODE		KEY WIDTH	SLEEVE
282	Square Flange	1 For PC Connector: 2.15+0.05/-0	01 Zirconia Straight Split
285	Rectangular Flange	2 For APC Connector: 2.05 +/- 0.02	02 Metal Straight Split

282 - 101 ORDER CODE example



FC-SC Adapter with Square Flange



FC-SC Adapter with Rectangular Flange

FC-ST HYBRID ADAPTER

CODE		KEY WIDTH	SLEEVE
284	Square Flange	1 For PC Connector: 2.15+0.05/-0	01 Zirconia Straight Split
287	Rectangular Flange		02 Metal Straight Split

284 - 101 ORDER CODE example



FC-ST Adapter with Square Flange



FC-ST Adapter with Rectangular Flange

1 PC Connector and Adapter

DIN PREMIUM



DIN Connectors

DIN Adapter

CONNECTOR CODE		FERRULE TYPE		BOOT TYPE		BOOT COLOR	
213	DIN Connector PC	101	SM: 125.5µm	1	3.0mm Cable Standard	1	Blue
		201	MM: 127µm	2	900µm Fiber Short	2	Black
				9	2.0mm Cable Standard	7	White
						8	Beige

CONNECTOR CODE		FERRULE TYPE		FERRULE POLISH		BOOT TYPE	
203	DIN Connector APC Conical Ferrule	201	SM: 125.5µm	1	No Angle	1	3.0mm Cable Standard
				2	8° Pre-Angle	2	900µm Fiber Short
						9	2.0mm Cable Standard

203 - 201 - 19 ORDER CODE example

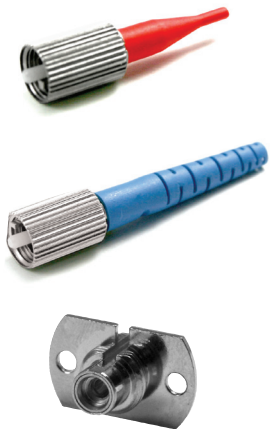
ADAPTER CODE		SLEEVE	
214		101	Zirconia Straight Split
		102	Metal Straight Split

214 - 101 ORDER CODE example

Note: Add 1.6 to order code to specify 1.6 mm cable

Connector and Adapter

D4 PREMIUM



D4 Connectors

D4 Adapter

CONNECTOR		FERRULE TYPE		BOOT TYPE		BOOT COLOR	
272	D4 Crimp Style	101	SM: 125.5µm	1	3.0mm Cable Standard	1	Blue
				2	900µm Fiber Short	2	Black
				9	2.0mm Cable Standard	3	Green
						4	Red
						5	Gray
						6	Yellow
						7	White
						8	Beige

272 - 101 - 21 ORDER CODE example

ADAPTER CODE		SLEEVE	
273	D4 Adapter	201	Metal Straight Split

273 - 201 ORDER CODE example

Note: Add 1.6 to order code to specify 1.6 mm cable option

Connector and Adapter

SMA STANDARD



SMA Connector

SMA Adapter

CONNECTOR CODE		FERRULE TYPE		BOOT TYPE		BOOT COLOR	
211	SMA with Hex Nut	201	MM: 127µm	205	MM: 250µm	1	Blue
		202	MM: 230µm	206	MM: 360µm	1	Blue
		203	MM: 144µm	207	MM: 460µm	2	Black
		204	MM: 245µm	208	MM: 240µm	2	Black

211 - 201 - 12 ORDER CODE example

ADAPTER CODE		ADAPTER TYPE	
212	SMA Adapter	101	SMA Adapter

212 - 101 ORDER CODE example

SC CONNECTOR BOOT OPTIONS

Premium Connector MINI Boots *Recommended for R7.5 & R15 Fiber*

- J** MINI 900µm HW-20015-0X (Length: 37, Boot Length: 20)
- K** MINI 2.0mm HW-20016-0X (Length: 40, Boot Length: 23)
- L** MINI 3.0mm HW-20017-0X (Length: 40, Boot Length: 23)

Premium Connector Long Boots

- A** Long 2.0mm HW-20057-0X (Length: 58, Boot Length: 41)
- 7** Long 3.0mm HW-20036-0X (Length: 58, Boot Length: 41)

Standard Boots* *Recommended for R15 & R30 Fiber*

- M** Standard 900µm HW-20131-0X (Length: 45, Boot Length: 28)
- N** Standard 2.0mm HW-20132-0X (Length: 49, Boot Length: 32)
- P** Standard 3.0mm HW-20133-0X (Length: 49, Boot Length: 32)

*These boots are for Premium and Standard connectors

Flex Angle Boots

- G** 2.0mm Flex Angled Boot HW-25001-0X (Length: 70, Boot Length: 52)
- F** 3.0mm Flex Angled Boot HW-25002-0X (Length: 70, Boot Length: 52)

FEATURES COMPARISON CHART

For SC Connector Boots	BOOT PART NUMBER	BOOT ORDER CODE	R-7.5 FIBER	R-15 FIBER	R-30 FIBER
MINI Boot 900µm	HW-20015-0X	J	●	▲	
MINI Boot 2.0mm	HW-20016-0X	K	●	▲	
MINI Boot 3.0mm	HW-20017-0X	L	●	▲	
Standard Boot 900µm	HW-20131-0X	M	●	●	▲
Standard Boot 2.0mm	HW-20132-0X	N	●	●	▲
Standard Boot 3.0mm	HW-20133-0X	P	●	●	▲
SC Long Boot 2.0mm	HW-20057-0X	7	●	●	●
SC Long Boot 3.0mm	HW-20036-0X	A	●	●	●
Flex Angle Boot 2.0mm	HW-25001-0X	G	●	▲	
Flex Angle Boot 3.0mm	HW-25002-0X	F	●	▲	

● Complies with GR-326 issue 4 TWAL test with 4 wavelength ▲ Good for general usage

Note: X=Color Code

1=Blue, 2=Black, 3= Green, 4=Red, 5=Gray, 6=Yellow, 7=White, 8=Beige

BOOT TYPE		BOOT COLOR	
7	Long 3.0mm	1	Blue
A	Long 2.0mm	2	Black
M	Standard 900µm	3	Green
N	Standard 2.0mm	4	Red
P	Standard 3.0mm	6	Yellow
J	MINI 900µm	7	White
K	MINI 2.0mm	8	Beige
L	MINI 3.0mm	9	Aqua
F	Flex Angled Boot 3.0mm		
G	Flex Angled Boot 2.0mm		

CRIMP RING CODE

Premium Crimp Ring (Supplied with Premium Connector)

1.6mm Premium Crimp Ring	HW-20061
2mm Premium Crimp Ring	HW-20026
3mm Premium Crimp Ring	HW-20001

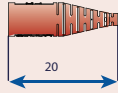
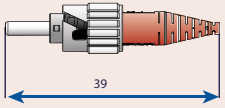
Standard Crimp Ring (Supplied with Standard Connector)

2mm Standard Crimp Ring	HW-23025
3mm Standard Crimp Ring	HW-23026

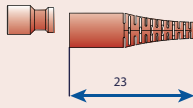
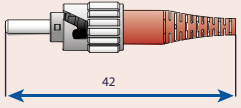
FC, ST CONNECTOR BOOT OPTIONS

ST Premium MINI Boot

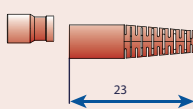
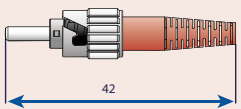
Recommended for R7.5 & R15 Fiber



J MINI 900 μ m
HW-20015-OX



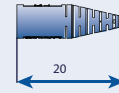
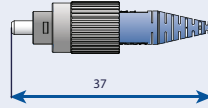
K MINI 2.0mm
HW-20018-OX



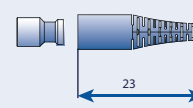
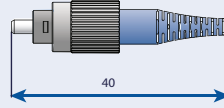
L MINI 3.0mm
HW-20019-OX

FC Premium MINI Boot

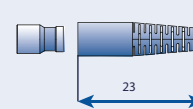
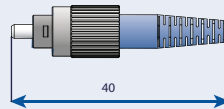
Recommended for R7.5 & R15 Fiber



J MINI 900 μ m
HW-20015-OX



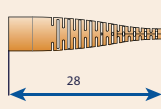
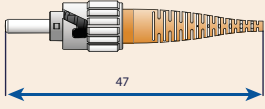
K MINI 2.0mm
HW-20018-OX



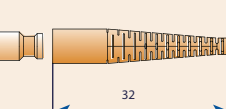
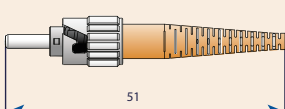
L MINI 3.0mm
HW-20019-OX

ST Premium Standard Boot

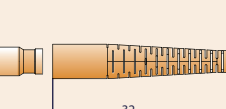
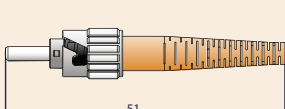
Recommended for R15 & R30 Fiber



M Standard 900 μ m
HW-20131-OX



N Standard 2.0mm
HW-20132-OX

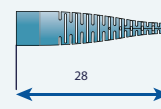
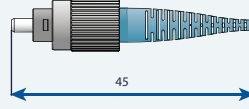


P Standard 3.0mm
HW-20133-OX

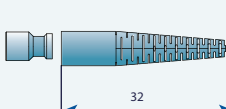
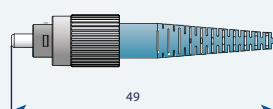
Note: These boots are for Premium and Standard Connectors

FC Premium Standard Boot

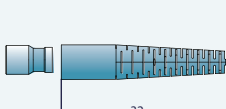
Recommended for R15 & R30 Fiber



M Standard 900 μ m
HW-20131-OX



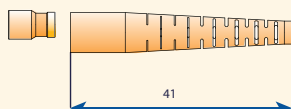
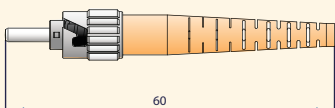
N Standard 2.0mm
HW-20132-OX



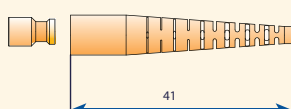
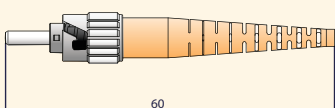
P Standard 3.0mm
HW-20133-OX

Note: These boots are for Premium and Standard Connectors

ST Premium Long Boot

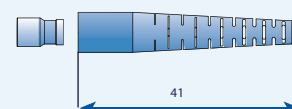


7 Long 3.0mm
HW-20037-OX

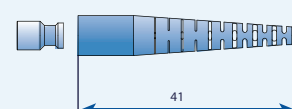
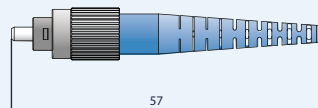


A Long 2.0mm
HW-20058-OX

FC Premium Long Boot



7 Long 3.0mm
HW-20037-OX



A Long 2.0mm
HW-20058-OX

CRIMP RING CODE

Premium Crimp Ring (Comes with Premium Connector)

1.6mm Premium Crimp Ring	HW-20061
2mm Premium Crimp Ring	HW-20026
3mm Premium Crimp Ring	HW-20001

CRIMP RING CODE

Standard Crimp Ring (Comes with Standard Connector)

2mm Standard Crimp Ring	HW-23025
3mm Standard Crimp Ring	HW-23026

E-2000™ CONNECTOR

INSERTION LOSS

For E-2000™	Typical	Maximum
Multimode	0.20dB	0.30dB
Singlemode, PC	0.20dB	0.40dB
Singlemode, APC 8°	0.20dB	0.40dB

Return Loss

Singlemode, PC	50dB	045dB
Singlemode, APC 8°	-	60dB

Mechanical Properties

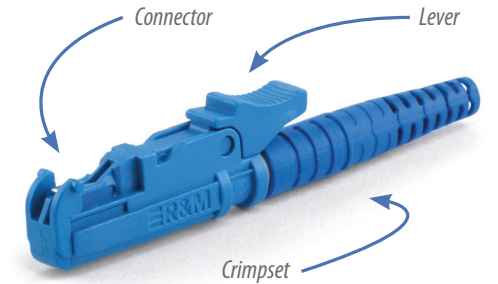
Mating Cycles	1000	
Temperature Cycling	-25 to +70°C, 12 cycles	

Materials

Housing, Protective Cap and Tension Relief	PBT/UL94 V-0
--	--------------



E 2000 APC



E 2000 UPC



E 2000 Multimode

Each E2000 Connector comprises the following three sub components:

- Connector Body
- Lever
- Boot & Crimp set

This allows you to customise the boot and lever color of the finished connector. Please see the order code example, below, for more details.

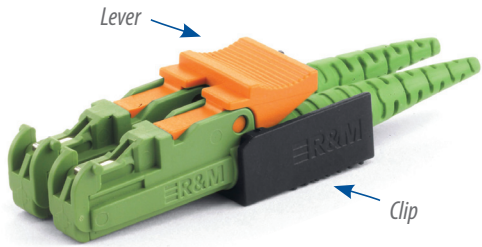
CONNECTOR BODY CODES		LEVER CODES		BOOT & CRIMPSET CODES	
R304378	Simplex, PC, Multimode, Black	R304403	White	R504383	For Pigtail, Black
R304379	Simplex, PC, Singlemode, Blue	R307017	Blue	R504441	For Pigtail, Blue
R305290	Simplex, APC, Singlemode, Green	R304405	Brown	R504126	For Pigtail, Green
		R307018	Green	R504066	For Pigtail, Red
		R308035	Violet	R502985	For Pigtail, Beige
		R304407	Orange	R504374	For 1.8~2.2 Cable, Black
		R304408	Red	R504361	For 1.8~2.2 Cable, Blue
		R309210	Black	R504270	For 1.8~2.2 Cable, Green
		R304832	Yellow	R504304	For 1.8-2.2mm Cable, Red
		R308034	Turquoise	R504022	For 1.8 - 2.2mm Cable, Beige
				R503973	For 2.3~2.6 Cable, Black
				R504017	For 2.3~2.6 Cable, Blue
				R503992	For 2.3~2.6 Cable, Green
				R503837	For 2.3-2.6mm Cable, Red
				R503988	For 2.3-2.6mm Cable, Beige
				R503290	For 2.7~3.0 Cable, Black
				R503442	For 2.7~3.0 Cable, Blue
				R503311	For 2.7~3.0 Cable, Green
				R503286	For 2.7-3.0mm Cable, Red
				R503310	For 2.7-3.0mm Cable, Beige

R305290 - R307018 - R503311 ORDER CODE example

Features:

- Secure transmission of high bit-rate protocols
- Zirconia ceramic ferrule fully protected by spring loaded shutter
- Push-pull locking mechanism for easy installation
- Color coded release levers
- Compliant with European (EN 186270) and International (IEC 61754-15) standards
- Tested and approved by Swisscom

Accessories



E-2000™ Compact APC Connector



E-2000™ Compact Adapter Duplex

E-2000™ DUPLEX CONNECTOR COMPONENTS

Two E-2000 connectors can be joined together to make a duplex connector by using the COMPACT DUPLEX CLIP and the DUPLEX CONNECTOR LEVER.

COMPACT (RJ) DUPLEX CONNECTOR LEVER

R305513	Blue
R305514	Green
R305515	Orange
R309004	Turquoise
R305517	Black
R305518	White

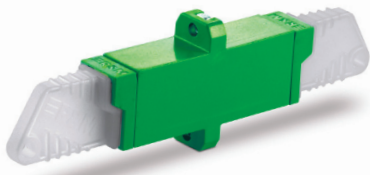
COMPACT (RJ) HOUSING CLIP CODE

R305542	Compact (RJ) Duplex Clip for Connector Housing

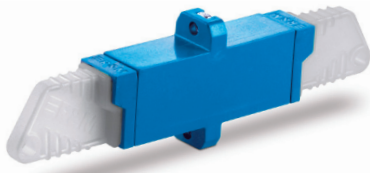
Features:

- Secure transmission of high bit-rate protocols
- Spring loaded shutter
- Compliant with European (EN 186270) and International (IEC 61754-15) standards
- Tested and approved by Swisscom

E-2000™ SIMPLEX ADAPTER



E-2000™ APC Simplex Adapter



E-2000™ APC Simplex Adapter

SIMPLEX ADAPTER CODE

R508019	Black, SC footprint, with Flange
R504511	Blue, SC footprint, with Flange
R504541	Green, SC footprint, with Flange
R504503	Beige/white, Flangeless, SC Footprint
R504512	Blue, Flangeless, SC Footprint
R504562	Green, Flangeless, SC Footprint

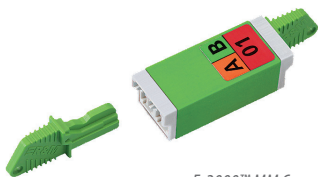
R508019 ORDER CODE example

Features:

- Spring loaded shutter
- High quality split ceramic sleeve
- Injection molded PBT housing UL94V-01 Rated
- High performance over 1000 matings

E-2000™ COMPACT DUPLEX ADAPTER

E-2000™ APC Compact Adapter



E-2000™ MM Compact Adapter



E-2000™ Snap-in Frame Supplied with Compact Adapter

COMPACT (RJ) ADAPTER

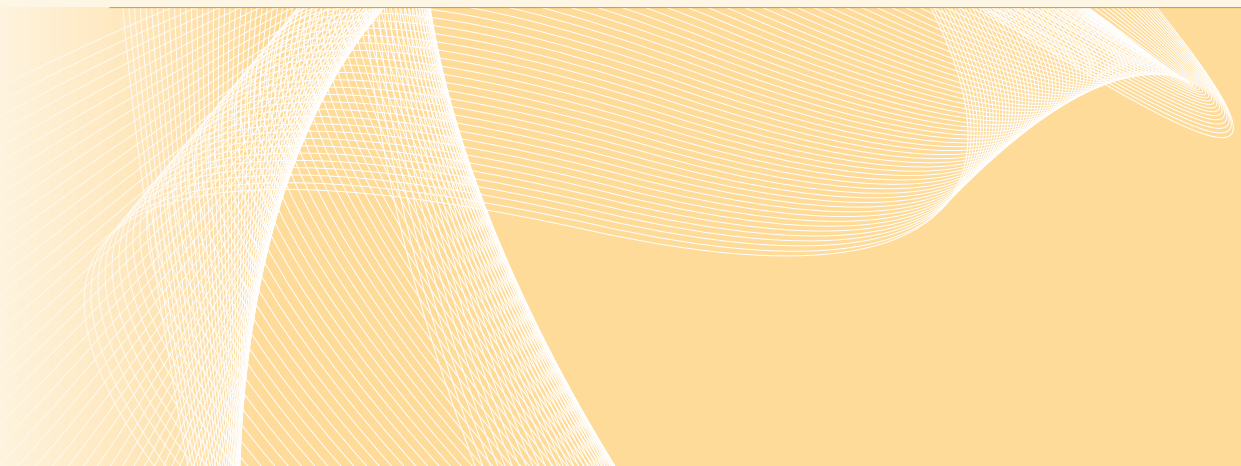
R313001	Compact Adapter & Snap-in Frame, Pb, Black
R313011	Compact Adapter & Snap-in Frame, Zr, Blue
R313009	Compact Adapter & Snap-in Frame, Zr, Green

R313001 ORDER CODE example

Features:

- Spring loaded shutter
- High quality split ceramic sleeve
- Injection molded PBT housing UL94V-01 Rated
- High performance over 1000 matings

STANDARD CONNECTOR SERIES	pg. 04
SMALL FORM FACTORS	pg. 24
SPECIALTY PRODUCTS	pg. 40
FERRULES AND SLEEVES	pg. 48
POLISHING SYSTEMS	pg. 54



SMALL FORM FACTORS

LC-UPC Unibody	pg. 26	MU Backboard & Package Housing	pg. 35
LC-APC Unibody	pg. 20	MPO Connector	pg. 36
LC Connector	pg. 27	MPO Ferrule	pg. 37
LC Switchable Uniboot	pg. 27	MPO Guide Pin	pg. 37
LC Flex Angle Boot	pg. 28	MPO Adapter	pg. 37
LC Connector Boots	pg. 29	MPO Crimp Tool	pg. 37
LC Adapter Series	pg. 30	MT-RJ Connector	pg. 38
LC-MU Hybrid Adapter	pg. 31	MT-RJ Adapter	pg. 38
LC-SC Hybrid Adapter	pg. 31	MT-RJ Ferrule	pg. 38
LC Keyed Connector & Adapter	pg. 32	MT-RJ Crimp Tool	pg. 38
MINI LC Connector	pg. 33		
LC Crimp Tool	pg. 33		
MU One Piece Connector	pg. 34		
MU Connector Kit	pg. 34		
MU Adapter	pg. 35		



SENKO's Long Standing LC Connector Licency Offers Various Styles of LC Connectors and Adapters to Meet the Customers Need

LC PREMIUM UNIBODY Connector



The LC Premium Unibody Connector molded with a Single body delivers maximum strength against mechanical tests including side loading test and TWAL tests. Manufactured to the highest standard, the LC Unibody connector is designed to meet and exceed the Verizon FOC TPR requirement and designed for the usage for the OSP application or where customers needs the highest quality product.

- Premium SM and Premium Low Loss SM (LS) are available
- Typical IL of 0.05 for LS SM and 0.08 for Premium SM Ferrule
- Various option of boots are available to meet your need
- PC Type and APC Type available

LC STANDARD (2PC) Connector



The Original LC designed connector gives the maximum value for cost. Using high quality components, this connector meets IEC, TIA/EIA and the general requirement of GR-326.

- Available with Pre-assembled 1pc style or in a Multi piece kit
- Typical IL of 0.12 for Standard ferrules
- Various options of boots are available to meet your demand

FEATURES COMPARISON CHART

For LC Premium and LC Standard	PREMIUM UNIBODY LOW LOSS SM FERRULE	PREMIUM UNIBODY SM FERRULE	STANDARD 2PC SM FERRULE
LC License Holder	○	○	○
Typical IL Against Master	0.05	0.08	0.12
Typical IL Random Mating	0.07	0.12	0.25
Verizon FOC TPR-9409	○	○	
GR-326 Core Issue 4	○	○	△
IEC, TIA/EIA JIS Spec	○	○	○
IEC Random Mating Grade A*	○		
IEC Random Mating Grade B*	○	○	
IEC Random Mating Grade C*	○	○	○
ROHS Compliant	○	○	○
UL 94V-0	○	○	○
Ruggedized Unibody Structure	○	○	
Universal Body For Sim-Dup-BTW	○	○	
6 Position Tuning After Assembly	○	○	○
LC MINI Boots	○	○	○
Standard Boots	○	○	○
TWAL Proof 900µm Boots	○	○	○
Pre-assembled 1pc Style	○	○	○
Free Floating Ferrule	○	○	○
Metal Back Post	○	○	○
Crimp Tool CRT-701	○	○	○

*Based on IEC61300-3-34

TECHNICAL SPECIFICATIONS

Unibody Premium and Standard 2pc Connector

PRODUCT SERIES	TYPE OF CONNECTOR	IL AGAINST MASTER (dB)		IL RANDOM MATING (dB)	
		Average IL	Maximum IL	Average IL	Maximum IL
Unibody Premium Low Loss SM	931-159-1xx, 932-159-1xx	0.05	0.15	0.07	0.15 ^{*1}
Unibody Premium SM	931-153-1xx, 932-153-1xx	0.08	0.20	0.12	0.25 ^{*2}
Unibody Premium APC Low Loss	931-159-3xx, 932-159-3xx	0.07	0.15	0.09	0.20
Unibody Premium APC	931-153-3xx, 932-153-3xx	0.10	0.25	0.14	0.30
Unibody Premium MM	931-251-2xx, 932-251-2xx	0.10	0.20	-	-
Standard 2pc + Standard SM Ferrule	911-151-1xx, 912-151-1xx	0.12	0.30	0.25	0.50 ^{*3}
Standard MM	911-251-2xx, 912-251-2xx	0.15	0.30	-	-
Singlemode					
Operating Temperature	-40°C to +75°C				
Durability	<0.2dB typical change, 500 matings*				

IEC Random mating test 61300-3-34

1 - To meet IEC Random Mating Grade A (≤ 0.07 dB mean, ≤ 0.15 dB max for >97% of sample. Grade A Spec is not finalized, above is a recommendation.

2 - To meet IEC Random Mating Grade B (≤ 0.12 dB mean, ≤ 0.25 dB max for >97% of sample

3 - To meet IEC Random Mating Grade C (≤ 0.25 dB mean, ≤ 0.50 dB max for >97% of sample

LC PREMIUM 1PC ADAPTER

SC Panel Foot Print



LC Adapter designed having the same outer dimension as the SC Adapter allows you to use the LC Adapter in a SC Panel doubling the density. Options for inner shutter for eye safety are available.

- Available in LC Duplex (Same outer size as SC Simplex) and LC 4-way quad style (Same Outer size as SC Duplex)
- Options for inner shutter for eye safety are available

LC STANDARD Adapter



The original LC Adapter designed to fit the RJ-45 style interface.

- Available in Duplex and Simplex format

ADAPTER SPECIFICATION	ZIRCONIA SLEEVE		METAL SLEEVE	
	Typical	Maximum	Typical	Maximum
Insertion Loss	0.05	0.20	0.10	0.30
Sleeve / Ferrule Withdraw Force	100g - 250gf			
Operating Temperature	-40° to +75°C			
Durability	<0.1dB typical change, 500 matings*			

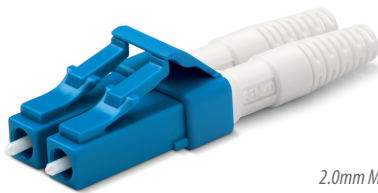
Note: Zirconia tested with SMF Fiber, metal sleeve tested with MMF

931, 932 Series

LC PREMIUM UNIBODY



900µm MINI Boot



2.0mm MINI Boot



3.0mm MINI Boot

CONNECTOR	FERRULE TYPE	HOUSING	BOOT TYPE	BOOT COLOR
931 LC Unibody Simplex	153 SM: Premium 125µm	1 SM: Blue	B MINI Boot 900µm	1 White
932 LC Unibody Duplex	159 SM: Low Loss 125µm	2 MM: Beige	C MINI Boot 2.0mm	2 Blue
	251 MM: Premium 127µm	5 MM OM3: Aqua	D MINI Boot 3.0mm	3 Black
		6 MM OM4: Heather Violet	1 BTW Boot	4 Yellow
			4 2.0mm Round	5 Red
			5 2.0mm Boot Short	
			6 3.0mm Boot	
			7 Flex-Angle 2.0mm	
			9 Flex-Angle 3.0mm	

931 - 153 - 141 ORDER CODE example

Note: Other ferrule ID size are available
SM 126µm SM 125.5µm MM 230µm MM144µm

Features:

- SENKO's flagship highest quality LC connector Series
- Solid body robust design to improve mechanical strength.
- Designed to exceed the requirement of Verizon FOC TPR 9409 requirement
- Premium Super Low loss, typical IL against Master 0.05dB
- Premium Super Low Loss to meet IEC61300-3-34 Grade A random mating requirement of Max 0.15dB
- Premium SM typical IL against Master 0.08dB Max
- Premium Super Low Loss to meet IEC61300-3-34 Grade B random mating requirement of Max 0.25dB
- 6 direction tuning feature to improve random mating IL
- Wide choice of boot types
- Crimp tool to be used CRT-701

931, 932 Series

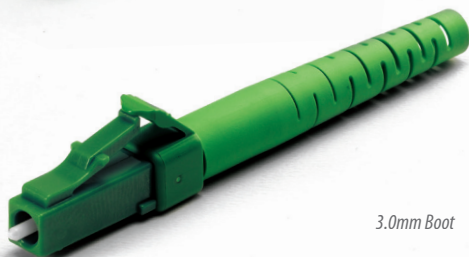
LC APC PREMIUM UNIBODY



BTW Boot



2.0mm Boot Short



3.0mm Boot

CONNECTOR	FERRULE TYPE	HOUSING	BOOT TYPE	BOOT COLOR
931 LC Unibody Simplex	153 SM: Premium 125µm	3 APC: Green	B MINI Boot 900µm	6 Green
932 LC Unibody Duplex	159 SM: Low Loss 125µm		C MINI Boot 2.0mm	
			D MINI Boot 3.0mm	
			1 BTW Boot	
			4 2.0mm Round	
			5 2.0mm Boot Short	
			6 3.0mm Boot	
			7 Flex-Angle 2.0mm	
			9 Flex-Angle 3.0mm	

931 - 153 - 316 ORDER CODE example

Note: Other ferrule ID size are available
SM 126µm SM 125.5µm MM 230µm MM 144µm

Features:

- SENKO's flagship highest quality LC connector Series
- Solid body robust design to improve mechanical strength
- Designed to exceed the requirement of Verizon FOC TPR 9409 requirement
- Premium Super Low loss, typical IL against Master 0.07dB
- Premium SM typical IL against Master 0.10dB
- Various choices of boots types
- Crimp tool to be used CRT-701

LC STANDARD 2PC

911, 912, 921, 922 Series

CONNECTOR	FERRULE TYPE	HOUSING	BOOT TYPE	BOOT COLOR
911 Preassembled Simplex	151 SM:Standard 125.5um	1 SM: Blue	B MINI Boot 900µm	1 White
912 Preassembled Duplex	251 MM:Standard 127µm	2 MM: Beige	C MINI Boot 2.0mm	2 Blue
921 Kit Simplex		5 MM OM3: Aqua	D MINI Boot 3.0mm	3 Black
922 Kit Duplex		6 MM OM4: Heather Violet	2 2.0mm Original	4 Yellow
			6 3.0mm Boot	5 Red

912 - 151 - 121 ORDER CODE example

Note: Other ferrule ID size are available
 SM 126µm SM 125µm MM 230µm MM 144µm

Features:

- The original 2pc LC Design
- SENKO's Standard Connector series gives the highest value for cost
- Pre-assembled one piece design and Connector Kit style available
- Meets and exceeds the TIA/EIA, IEC and JIS LC Specification
- Standard SM Ferrule typical IL against Master 0.12dB
- Various boot color to meet customer need
- Crimp tool to be used CRT-701



900µm MINI Boot



2.0mm MINI Boot



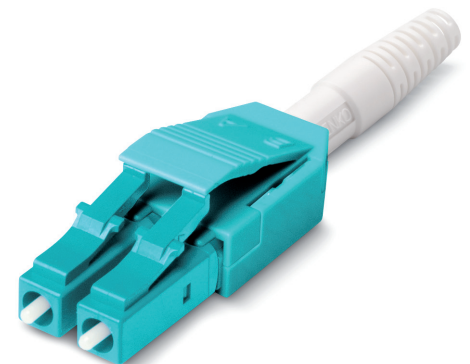
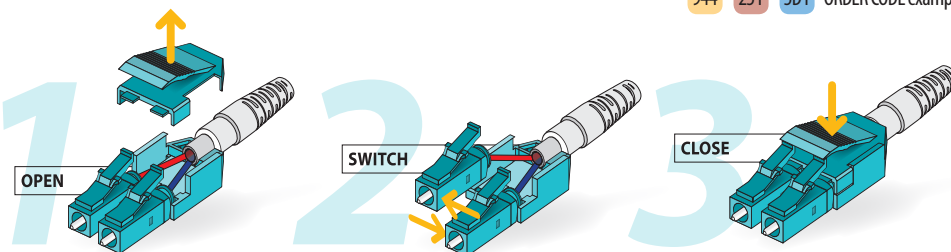
3.0mm MINI Boot

LC SWITCHABLE UNIBOOT

944 Series

CODE	FERRULE TYPE	HOUSING	BOOT TYPE	BOOT COLOR
944	151 SM:Standard 125.5um	1 SM: Blue	C MINI Boot 2.0mm	1 White
	251 MM:Standard 127µm	2 MM: Beige	D MINI Boot 3.0mm	
		5 MM OM3: Aqua	7 Flex-Angle 2.0mm	
		6 MM OM4: Heather Violet	9 Flex-Angle 3.0mm	

944 - 251 - 5D1 ORDER CODE example

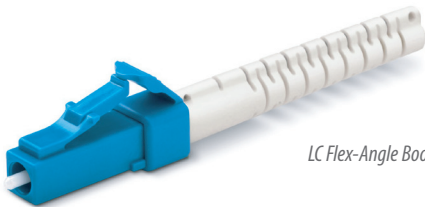


LC Duplex Switchable Connector with MINI Boot

The SENKO LC Duplex Switchable Connector is a unique design that allows the use of round style, 2.0mm or 3.0mm jacketed cable instead of the traditional zipcord duplex cable for a more compact design.

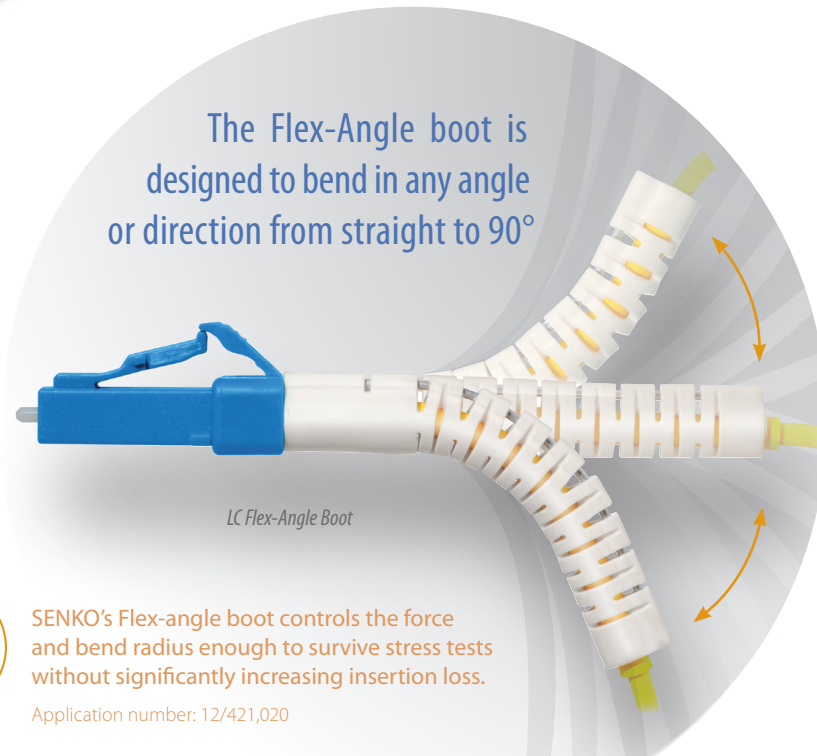
The housing of the LC Duplex Switchable Connector can be taken apart in the field without the use of any special tooling. This duplex LC allows the fiber polarity to be switched at the time of cable assembly installation without having to re-terminate the connectors.

LC FLEX ANGLE BOOT STANDARD



LC Flex-Angle Boot

SENKO's new 2.0mm and 3.0mm boot addition for the Premium and Standard LC connectors. The Flex-Angle boot is designed to bend and maintain any angle or direction from straight to 90°. The boot is molded over a single stainless steel wire and can be easily positioned by hand. The internal wire holds the boot at the desired angle or direction.



The Flex-Angle boot is designed to bend in any angle or direction from straight to 90°

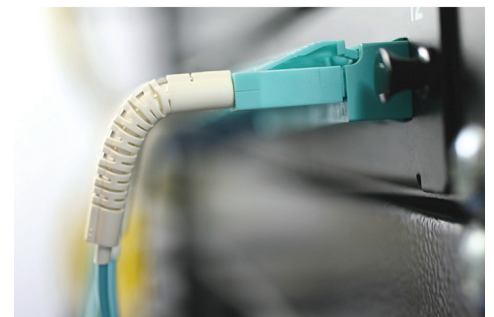
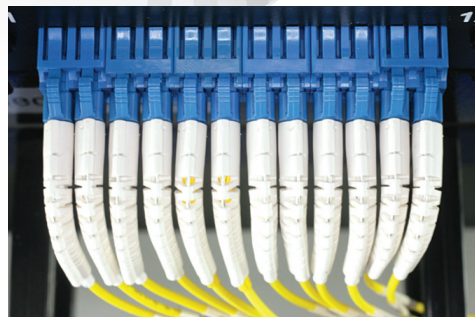
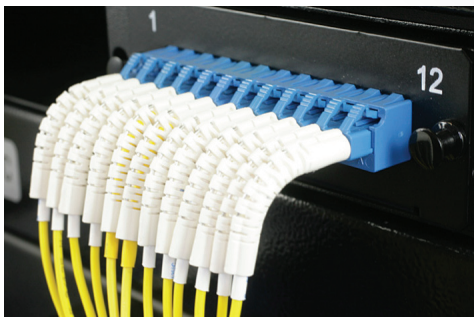
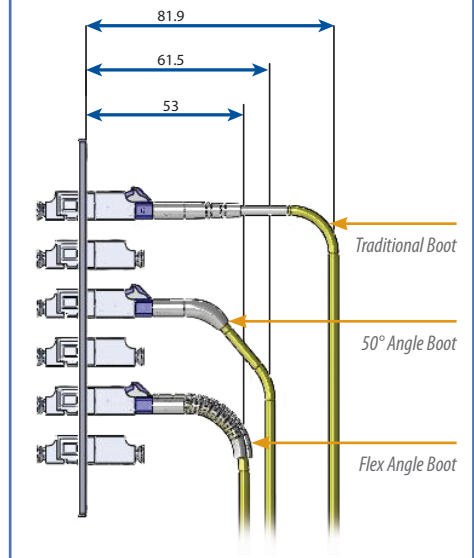
LC Flex-Angle Boot



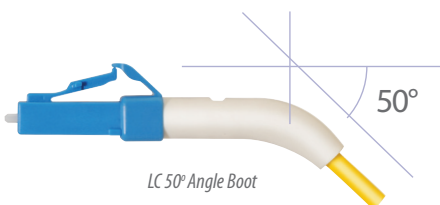
SENKO's Flex-angle boot controls the force and bend radius enough to survive stress tests without significantly increasing insertion loss.

Application number: 12/421,020

Flex Angle Boot Reduces Boot Protrusion From Panel



LC 50° ANGLE BOOT STANDARD



LC 50° Angle Boot

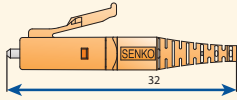
Highlight: The 50° Angle boot is assembled using the same termination procedure established for the 2.0mm or 3.0mm connector (same crimp ring and crimp tool), and can be used on simplex and duplex connector configurations.

- Provides a fixed angle positioning of 50° for better cable management
- Made of RoHS material and UL94-V0 rated type

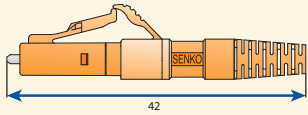
Note: Custom configurations available upon request

LC CONNECTOR BOOT OPTIONS

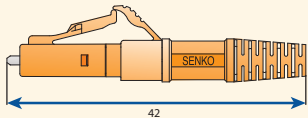
Standard Connector MINI Boots



B MINI 900 μm
931-MIN1-X

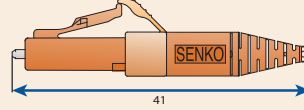


C MINI 2.0mm
931-MIN2-X

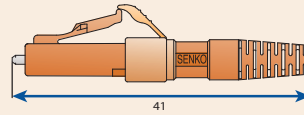


D MINI 3.0mm
931-MIN3-X

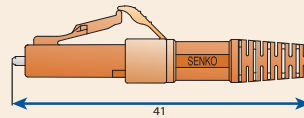
Unibody Connector MINI Boots



B MINI 900 μm
931-UNI1-X

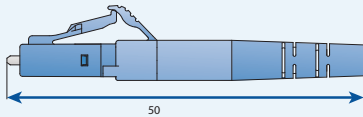


C MINI 2.0mm
931-MIN2-X

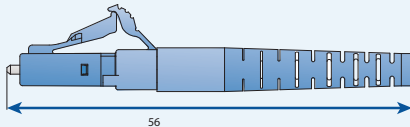
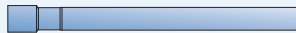


D MINI 3.0mm
931-MIN3-X

Standard Connector Boots



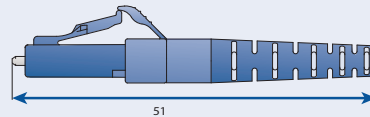
2 2.0mm Original
BTLC-2-X-ON



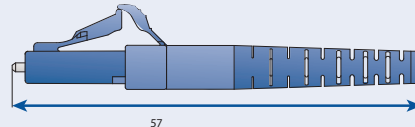
6 3.0mm Boot
931-JCB3-X-R



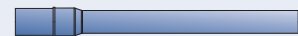
Unibody Connector Boots



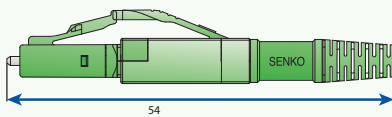
4 2.0mm Round
931-JCB-X-R



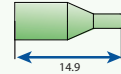
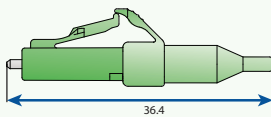
6 3.0mm Boot
931-JCB3-X-R



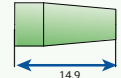
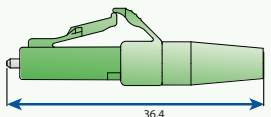
More Boots Options



LC Switchable with MINI Boot 3.0mm
931-MIN3-X



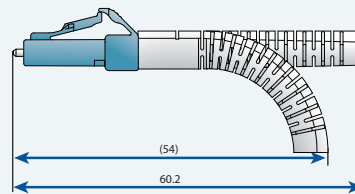
1 BTW Boot
931-BTWB-X



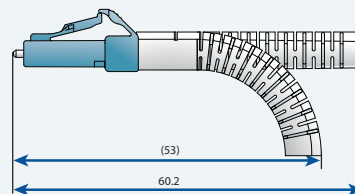
5 2.0mm Short Boot
931-JCBS-X



Flex Angle Boots



7 2.0mm Flex Angled Boot
931-JCBF-X

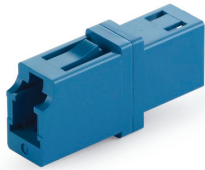


9 3.0mm Flex Angled Boot
931-JCBF3-X

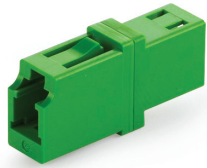
Note: X=Color Code
W=White, G=Green, L=Blue, B=Black, A=Aqua, R=Red

999 Series

LC ADAPTER STANDARD



LC Adapter Simplex



LC Adapter Simplex



LC Adapter Duplex

CODE	TYPE	COLOR	SLEEVE TYPE
999	1 Simplex	1 Blue	1 Zirconia Straight Split
	2 Duplex	2 Black	2 Metal Straight Split
		3 APC Green	
		8 Beige	
		9 Aqua	

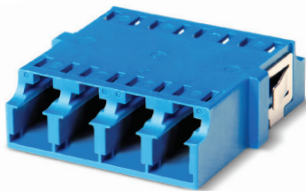
999 - 191 ORDER CODE example

Features:

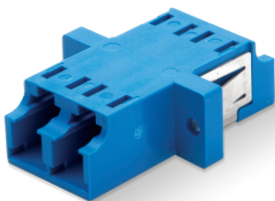
- Compact design
- RJ-45 Style Interface
- Simplex and duplex type available
- Telcordia, ANSI, TIA/EIA, and IEC compliance*
- Color coding
- High precision alignment with zirconia sleeve or metal sleeve

988 Series (SC Footprint SNR-SNR)

LC ADAPTER (SC FOOTPRINT STYLE) SYMMETRICAL DESIGN



LC Quad Adapter, with SC Footprint, without Flange, Senior-Senior



LC Duplex Adapter, with SC Footprint, with Flange, Senior-Senior

CODE	TYPE	COLOR	SLEEVE TYPE	SHUTTER
988	3S Duplex with Flange	1 Blue	1 Zirconia Straight Split	N No Shutter
	4S Duplex with No Flange	2 Black	2 Metal Straight Split	
	5S Quad with Flange	3 APC Green		
	6S Quad with No Flange	8 Beige		
		9 Aqua		

988 - 3S11 - N ORDER CODE example

Features:

- SC Foot print design allows to use the LC Adapter in a SC panel and double the density
- Premium One piece housing design / no welding point
- Telcordia, ANSI, TIA/EIA and IEC Compliance
- Internal shutter available
- SC Foot print type, Senior - Junior type also available
- High precision alignment with zirconia sleeve or metal sleeve



LC One Piece Adapter, No Weld Type



LC Two Piece Adapter, Welded Type

The new one piece housing design prevents breaking of the adapter due to the absence of ultrasonic weld type construction.

LC ADAPTER WITH SHUTTER

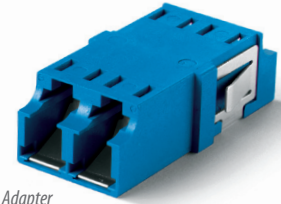
SENKO offers internal shutters for adapters to shield potentially harmful light. SENKO's patented internal shutter is a retractable shutter inside the adapter body and is only actuated by inserting the connector in to the

body, designed specifically to prevent end face damage of the ferrule. The internal shutter is fully automatic and provides an alternative to external shutter solutions.

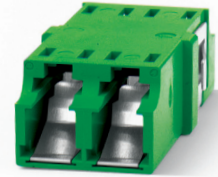
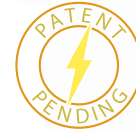
CODE	TYPE	COLOR	SLEEVE TYPE	SHUTTER
988	3S Duplex with Flange	1 Blue	1 Zirconia Straight Split	A Internal Shutter (w/o mark)
	4S Duplex with No Flange	2 Black	2 Metal Straight Split	
		3 APC Green		
		8 Beige		
		9 Aqua		

988 - 3S11 - A ORDER CODE example

988 Series



LC One Piece Adapter with SC Foot Print



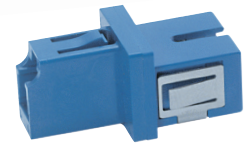
LC One Piece Adapter with SC Foot Print (SNR/SNR)

LC-MU & LC-SC HYBRID ADAPTER

PART NUMBER	DESCRIPTION
M90-101	LC-MU Simplex Hybrid adapter with Zirconia Sleeve
990-113	LC-SC Simplex Hybrid adapter with Zirconia Sleeve



LC-MU Hybrid Adapter



LC-SC Hybrid Adapter

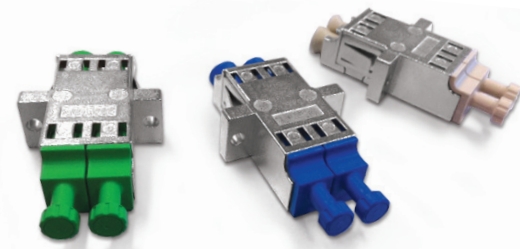
LC METAL ADAPTER

LC one piece duplex metal adapters are available in symmetrical SC foot print design with or without flanges. They can be ordered with internal shutters to provide much needed eye safety by shielding the potentially harmful laser light. These adapters have color coded

dust cap and sleeve holder to ensure right adapter is used for the correct application (PC SM: Blue, PC MM: Beige, APC: Green). Both zirconia and phosphor bronze alignment sleeves are available on this product.

CODE	TYPE	DUST CAP/INTERNAL COLOR	SLEEVE TYPE	SHUTTER
988M	3S Duplex with Flange	1 Blue	1 Zirconia	N No Sutter
	4S Duplex without Flange	2 Green	2 Metal	A Internal Shutter
		3 Beige		

988M - 3S1 - 1N ORDER CODE example



LC One Piece Duplex Adapters

LC KEYED CONNECTOR AND ADAPTER



LC Keyed Connectors and Matching Adapters

SENKO Keyed LC Connector Solution offers mechanical network security for organizations wanting to segregate networks due to privacy or security concerns.

Features:

- LC Keyed connectors and adapters prevent improper connection of separate networks with common access points
- LC SECURE products feature twelve color-coded, keyed designs to limit improper connections networks
- Each LC secure connector will mate only with same-color LC secure adapter

CODE	TYPE	FERRULE I.D.	COLOR/CLIP	HOUSING COLOR & KEY	BOOT	BOOT COLOR									
93	LC Keyed Connector	5	Simplex (Un-assembled)	153	SM: 125µm	1	Blue	A	Pink	K	Turquoise	B	MINI Boot 900µm	1	White
		6	Duplex (Un-assembled)	251	MM: 127µm	2	Beige	B	White	L	Magenta	C	MINI Boot 2.0mm		
		7	Simplex (Assembled)					C	Yellow	M	Olive	D	MINI Boot 3.0mm		
		8	Duplex (Assembled)					D	Red			4	2.0mm Round		
								E	Orange			6	3.0mm Boot		
								F	Violet			7	Flex-Angle 2.0mm		
								G	Gray			9	Flex-Angle 3.0mm		
								H	Cobalt						
							J	Brown							

936 - 251 - 2A41 ORDER CODE example

CODE	TYPE	COLOR & KEY	SLEEVE TYPE		
977	LC Keyed Adapter	3S Duplex with Flange	A Pink	H Cobalt	1 Zirconia Straight Split
		4S Duplex with No Flange	B White	J Brown	2 Metal Straight Split
		5S Quad with Flange	C Yellow	K Turquoise	
		6S Quad with No Flange	D Red	L Magenta	
			E Orange	M Olive	
			F Violet	U Black (Universal)	
			G Gray		

977 3SD1 ORDER CODE example

MINI LC CONNECTOR (5.25mm PITCH TYPE)

The Mini LC Connector is designed with a narrow ferrule pitch to work with the Mini SFP (mSFP) transceiver. This accommodates the need of higher port densities provided by the transceivers without compromising performance. The change in pitch was introduced to create a more compact transceiver footprint. With this reduction, port density can be increased without changes to overall enclosure dimensions.

The MINI LC Duplex Connector looks virtually identical to standard LC Duplex connector distinguishable with its black Duplex clip and its 5.25mm pitch versus the 6.25mm used in standard LC Duplex connector.

Narrow Pitch LC

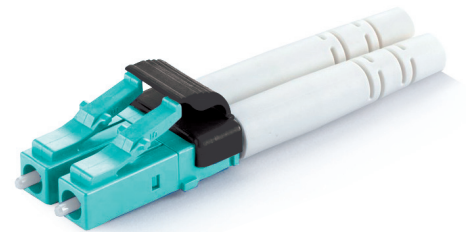
CONNECTOR	FERRULE TYPE	HOUSING	BOOT TYPE	BOOT COLOR
916	LC Pre-Assembled	1 SM: Blue	2 2.0mm	1 White
	1 PC, 5.25mm Pitch	2 MM: Beige	Round Boot	
		5 MM OM3: Aqua		
		6 MM OM4: Heather Violet		

916 - 151 - 121 ORDER CODE example

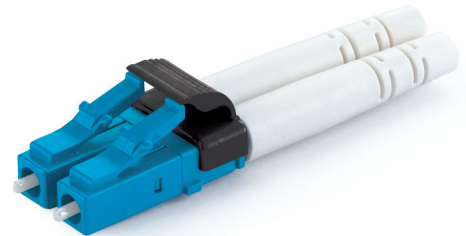
Note: Other ferrule ID size are available
SM 126µm SM 125µm MM 230µm MM 144µm

Features:

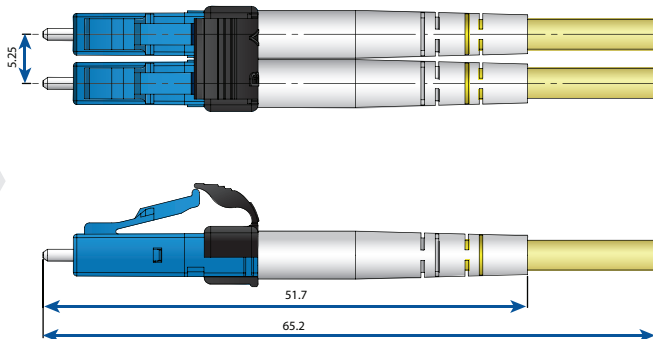
- Increase the density
- Extremely compact design
- Easy assembly
- Ferrule to ferrule pitch reduced from 6.25 to 5.25
- Same spec as the Standard LC Connector



MINI LC 2.0mm Duplex Connector, Aqua



MINI LC 2.0mm Duplex Connector, Blue



MINI LC Connector
5.25mm Pitch

LC CRIMP TOOL

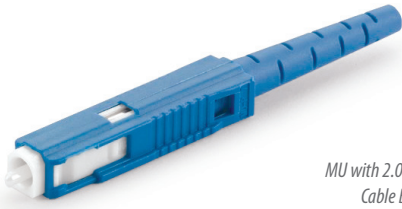
CODE	CONNECTOR TYPE
CRT	701 LC/MU Dual Crimp Tool

CRT - 701 ORDER CODE example

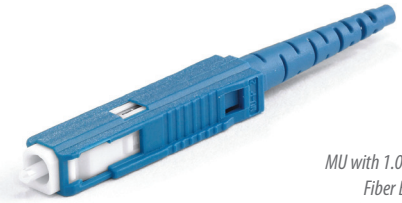


1 PC Connector (510 Series)

MU ONE PIECE CONNECTOR



MU with 2.0mm Cable Boot



MU with 1.0mm Fiber Boot



MU with 1.0mm Fiber Short Boot

CONNECTOR	FERRULE TYPE	HOUSING	BOOT TYPE	BOOT COLOR
510 MU Connector	113 SM: 125µm	1 Blue	1 2.0mm Cable	1 Blue
	211 MM: 127µm	2 Black	2 1.0mm Fiber	2 Black
		3 Red	4 1.6mm Cable	3 Green
		4 Beige	5 1.0 Fiber Short	4 Red
		5 Brown		5 Gray
		6 Yellow		6 Yellow
		0 MU-J*		7 White
				8 Beige
				9 Lavender

510 - 113 - 519 ORDER CODE example

Note: Other ferrule ID size are available
SM 126µm SM 125.5µm

Features:

- NTT-MU hardware compatibility
- NTT & JIS compliance*
- Pre assembled 1pc style
- Compact, pull-proof design
- One piece construction
- Tunable zirconia connector ferrule
- Corrosion resistant body
- UL-rated plastic housing and boot
- Universal Duplex Clip
- Low insertion loss & back reflection*

Connector Kit (511 Series)

MU CONNECTOR KIT



MU Kit with 2.0mm Cable Boot



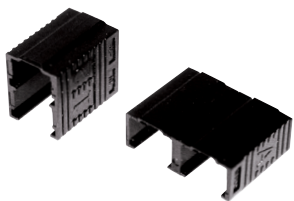
MU Kit with 1.0mm Fiber Short Body

CODE	FERRULE TYPE	HOUSING	BOOT TYPE	BOOT COLOR
511 MU Kit	101 SM: 125.5µm	5 Blue	1 2.0mm Cable	9 Lavender
	102 SM: 126µm	0 MU-J*	3 1.0mm Fiber Short Body	
	103 SM: 125µm			
	201 MM: 127µm			

511 - 103 - 519 ORDER CODE example

Note: 1. Custom configurations available upon request
2. Ferrule to be ordered separately

MU DUPLEX CLIP



MU Duplex Clip

CODE	CLIP TYPE	BOOT COLOR
512 MU Kit	1 Vertical	12 Black
	2 Horizontal	15 Brown

512 - 215 ORDER CODE example

Note: Custom configurations available upon request

MU ADAPTER

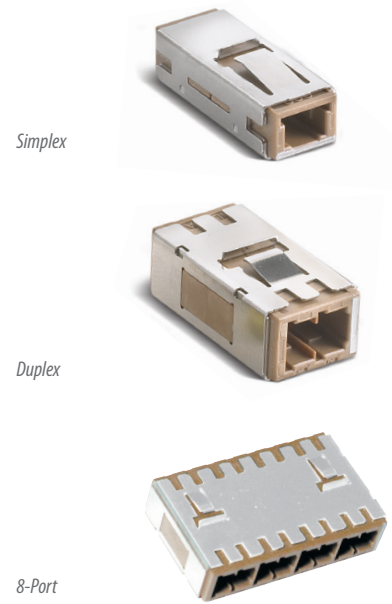
MU Adapter

CODE	TYPE	SLEEVE
MUA	1 Simplex	ZA Zirconia
	2 Duplex	
	3 8-Port	

ORDER CODE example: MUA - 1 - ZA

Features:

- Compact design
- NTT-MU hardware compatibility
- NTT & JIS compliance
- High precision alignment
- Low insertion and return loss and back reflection*
- Corrosion resistance reflection



MU BACKBOARD AND PACKAGE HOUSING

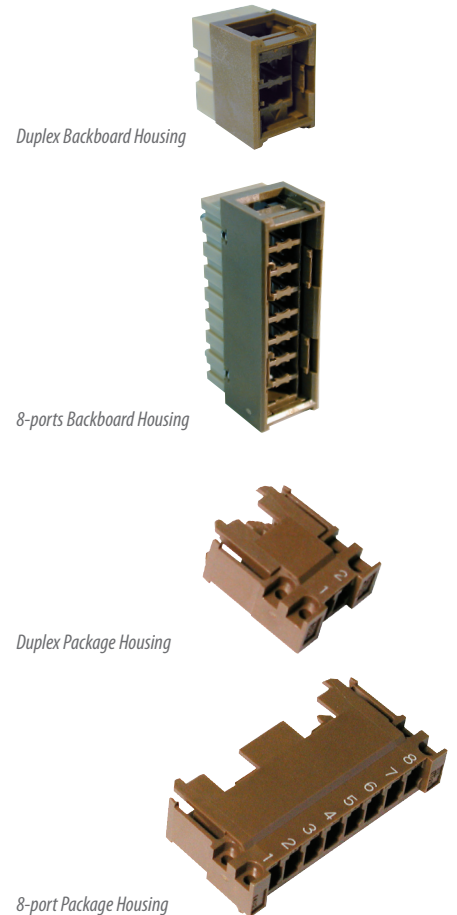
MU Back Board

CODE	TYPE	HOUSING TYPE
MUB	2 Duplex	1 2.4mm Back Board Thickness
	8 8-Port	2 3.2mm Back Board Thickness
		3 Package Housing

ORDER CODE example: MUB - 2 - 1

Features:

- Compact design
- NTT-MU hardware compatibility
- NTT & JIS compliance
- High precision alignment
- Low insertion and return loss and back reflection*
- Corrosion resistance reflection



CODE	TYPE
MUB Sleeve Holder	MU-SH

ORDER CODE example: MUB - MU-SH

CODE	TYPE
MUB Removable Tool	MU-JRT

ORDER CODE example: MUB - MU-JRT

MPO PREMIUM CONNECTOR



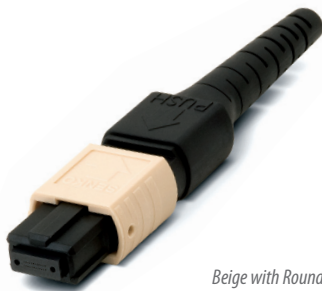
Yellow with Ribbon Cable



Green with Ribbon Fiber



Green with MINI Ribbon Fiber Boot



Beige with Round 3mm Boot



Application number:
12/421,020



Aqua with Flex Angle Boot

The MPO connector offers up to 24 times the density of standard connectors, providing significant space and cost savings. MPO Connectors utilize precision molded MT Ferrules, with metal guide pins and precise housing dimensions to ensure fiber alignment when mating. MPO Connector housing are available in Green (for SM) Yellow (for SM Super Low loss), Beige (for MM) and Aqua (for OM3

Fiber). Ferrule available in 4, 8, 12 and 24 fiber hole configuration.

Ferrules are available for SM Standard, SM Super Low Loss, MM Standard and MM Low Loss. Boots are available for Ribbon Cable, Ribbon fiber, Round boot and the patent SENKO Flex angle boot.

SPECIFICATION	SM STANDARD		SM SUPER LOW LOSS		MM STANDARD		MM SUPER LOW LOSS	
For MPO	Typical	Max	Typical	Max	Typical	Max	Typical	Max
Insertion Loss	0.25dB <i>(all fibers)</i>	0.7dB <i>(single fiber)</i>	0.1dB <i>(all fibers)</i>	0.35dB <i>(single fiber)</i>	0.20dB <i>(all fibers)</i>	0.40dB <i>(single fiber)</i>	0.08dB <i>(all fibers)</i>	0.25dB <i>(single fiber)</i>
Return Loss	60dB (8° Polish)		60dB (8° Polish)		25dB (Flat Polish)		25dB (Flat Polish)	
Durability	<0.30dB change 500 matings <i>(per EIA-455-21A)</i>		<0.30dB change 500 matings <i>(per EIA-455-21A)</i>		<0.20dB change 1000 matings <i>(per EIA-455-21A)</i>		<0.20dB change 1000 matings <i>(per EIA-455-21A)</i>	
Operating Temperature	-40°C ~ +75°C							
Ferrule type available	4, 8, 12, 24		8, 12		4, 8, 12, 24		8, 12	

Note: SM Standard 24 fiber Typical 0.5dB and Max 1.0dB
MM Standard 24 fiber Typical 0.2dB and Max 0.6dB
For MM Super Low Loss, SM pin (PN PCSM) to be used to guarantee IL Value

Note: Above value is when terminated using SENKO recommended procedures

CODE	COLOR	BOOT
701 Male	1 Green (SM)	1 Ribbon Fiber
702 Female	3 Beige (MM 62.5/125)	2 Ruggedized Cable
	4 Yellow (SM Low Loss)	4 Round Cable 3.0mm
	5 Aqua (OM3 50/125)	5 Flex Angle 3.0mm
	6 Heather Violet (OM4 50/125)	6 MINI Ribbon Fiber

702 - 12 ORDER CODE example

Note: 1. Custom configurations available upon request
2. When MM Low Loss ferrule is used, SM Pin need to be used for MT connector kit. Order code: 701-5X-LL

Features:

- Precision molded MT ferrule
- High precision guide pins for exact alignment
- Compact design, up to 12 fiber ribbons
- IEC 61754-7 Compliant*
- Telcordia GR-1435-CORE compliant*
- Polishing does not require diamond film

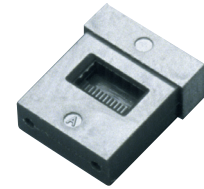
MT/MPO FERRULE

CODE	FERRULE TYPE	FERRULE HOLES	MATERIAL
MT	2 SM Standard (8° Polish)	1 4-Fiber	P Thermoplastic (PPS)
	3 SM Super Low Loss (8° Polish)	2 8-Fiber	
	4 MM Standard (Flat Polish)	3 12-Fiber	
	6 MM Super Low Loss (Flat Polish)	5 24-Fiber	

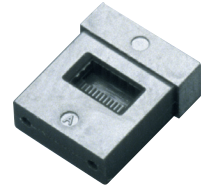
MT - 2 - 3 - P ORDER CODE example

Note: Super Low Loss ferrules are available only for 8 and 12 fiber

MPO 24



MPO 08



MPO GUIDE PIN

PIN KEEPER CODE	TYPE
701 Guide Pin Assy	PCMM Multimode
	PCSM Singlemode
	PCLL SM Low Loss

701 - PCMM ORDER CODE example

MPO Guide Pin



MPO GUIDE PIN CODE	TYPE
702 Female Pin Keeper	PK Female Pin Keeper

702 - PK ORDER CODE example

MPO ADAPTER

ADAPTER CODE	COLOR
777 Flange	1 Black
778 No Flange	2 Aqua
	3 Violet
	K Gray, Key Aligned Type

777 - 1 ORDER CODE example

MPO Adapter with Flange



MPO Adapter No Flange



MPO CRIMP TOOL

CODE	TYPE
CRT	603 MPO Connector

CRT - 603 ORDER CODE example

MPO Crimp Tool



MT-RJ CONNECTOR



SPECIFICATION	SINGLEMODE	MULTIMODE
For MT-RJ	Typical	Typical
Insertion Loss	0.20dB	< 0.25dB typical
Return Loss	≥ 45dB for Singlemode PC	
Durability	< 0.1dB change, 500 matings	
Operating Temperature	-40 to +75°C	

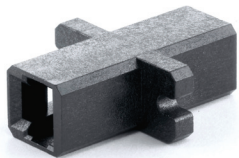
Note: Specifications shown above were obtained using SENKO recommended products and procedures.

CONNECTOR	HOUSING COLOR	BOOT TYPE	BOOT COLOR
801 MT-RJ Female	1 Black	1 3.0mm Cable Round	1 Black
802 MT-RJ Male		4 1.8mm Duplex Zip Cable Boot	
		5 2.0mm Duplex Zip Cable Boot	

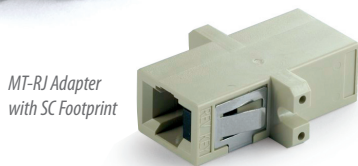
801 - 141 ORDER CODE example

Note: When terminated using SENKO recommended procedures

MT-RJ ADAPTER



MT-RJ Standard Adapter



MT-RJ Adapter with SC Footprint

ADAPTER CODE	COLOR
888 Standard	1 Black
890 SC Footprint with Flange	2 Beige
891 SC Footprint with No Flange	3 Blue

891 - 1 ORDER CODE example

MT-RJ FERRULE AND GUIDE PIN



MT-RJ ferrule

CONNECTOR TYPE	TYPE	MATERIAL
MTRJ	S Singlemode	P Thermoplastic (PPS)
	M Multimode	

PIN CODE	TYPE	TOLERANCE	MATERIAL
GP	2 MT-RJ	1 Multimode	1 Stainless Steel
		2 Singlemode	

GP - 21 - 1 ORDER CODE example

Note: To make one male connector please order 2 pin's

MT-RJ CRIMP TOOL



103 MT-RJ Connector, 3.0 mm and Zip Cables

CODE	TYPE
CRT	103 MT-RJ Connector 3.0mm Round and Zip Cable

CRT - 103 ORDER CODE example

STANDARD CONNECTOR SERIES

pg. 04

SMALL FORM FACTORS

pg. 24

SPECIALTY PRODUCTS

pg. 40

FERRULES AND SLEEVES

pg. 48

POLISHING SYSTEMS

pg. 54



SPECIALTY PRODUCTS

Q-XP Connector SC	pg. 40
XP Fit Plus Connector SC	pg. 41
XP Fit Plus Connector LC	pg. 42
XP Fit Plus Termination Kit	pg. 43
XP Fit Plus Connector Tools	pg. 43
Premium Attenuators	pg. 44
Terminators	pg. 45
Switchable Adapter	pg. 46

Field Installable

Q-XP PREMIUM SC CONNECTOR

Q-XP is SENKO's highest performing field installable connector. This GR-1081 tested connector provides Telecom grade performance while yielding maximum mechanical and optical characteristics.

SPECIFICATION	SINGLEMODE
For Q-XP Fit	Typical
Insertion Loss	≤ 0.25dB
Return Loss	≥65dB
Durability	<0.1dB change, 500 matings
Operating Temperature	-40°C to +75°C
Storage Temperature	-40°C to +85°C
Tensile	TIA/EIA 568-B.3
Intermateability	IEC 61754-4



Highlight:

- No Polishing
- No Crimp Tools
- No Adhesives
- No expensive fusion splicer

Note: Specifications shown above were obtained using SENKO recommended products and procedures.

CODE	FERRULETYPE	OUTER HOUSING	BOOT TYPE	BOOT COLOR
QXP Q-XP SC Connector	091 SM: APC	4 Green	1 900µm 2 1.65m 3 2.0mm 4 3.0mm	3 Green



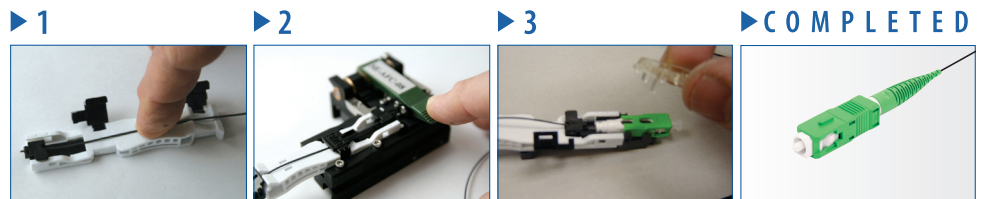
Q-XP Fit SC Connector

QXP 091 413 ORDER CODE example

- Note:**
1. The connector performance specifications include an internal mechanical splice
 2. Typical specification values are at 23°C ±5°C

Features:

- Mechanical Splice (index matching gel)
- Highly Stable & Reliable
- RoHS Compliant
- GR-1081 completed
- Termination under 3 minutes
- Finished Connector meets UL94-V0 Flammability Rated
- 92% yield

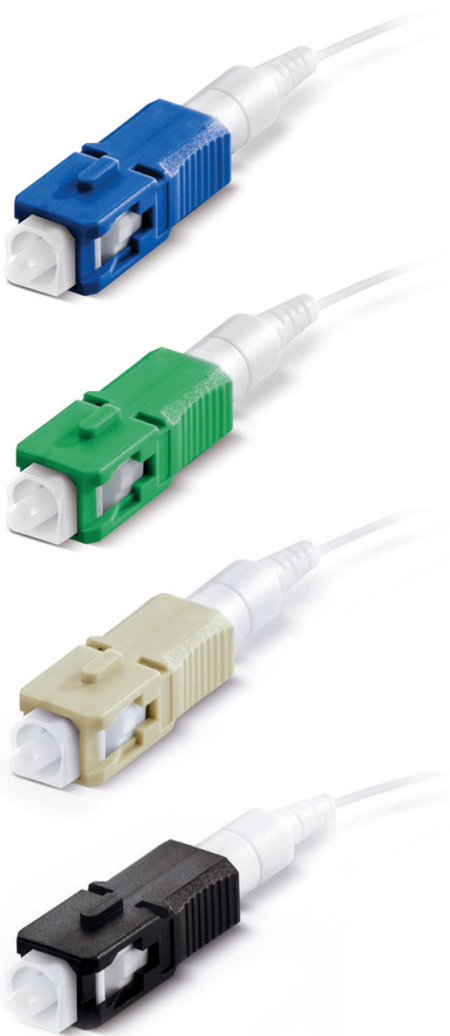


XP FIT PLUS SC CONNECTOR

Field Installable

The XP Fit Plus is a pre-polished, pre-assembled connector compatible with the standard SC connector. In place of epoxy, an internal mechanical grip gently but effectively holds the fiber in place and can be installed in under two minutes. Without polishing or adhesives,

the XP Fit Plus makes field installations quick and easy, eliminating the need for epoxy curing and hand polishing at the work site. The XP Fit Plus comes with an assembling jig and fiber holder, making for an accurate alignment and fiber cleave when terminating the connector.



SPECIFICATION	SINGLEMODE	MULTIMODE
For XP Fit Plus SC	Typical	
Insertion Loss	0.2dB (PC) and 0.3dB (APC)	0.1dB
Return Loss	55dB (PC) 60dB (APC)	35dB
Durability	<0.1 dB change, 500 matings	
Operating Temperature	-40°C to +75°C	
Tensile	TIA/EIA 568-B.3	
Intermateability	IEC 61754-4	

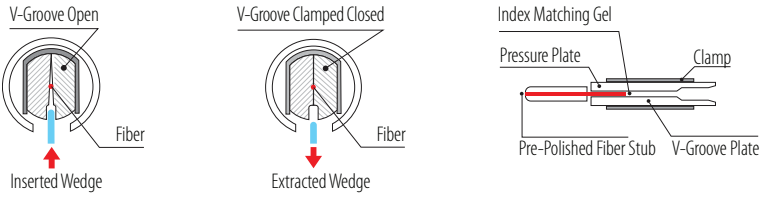
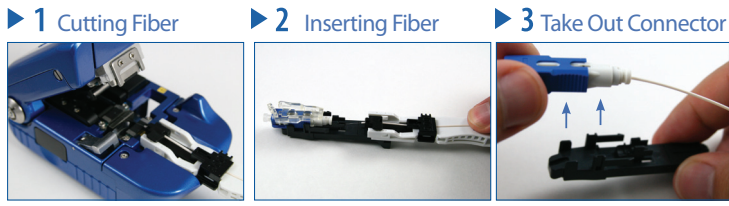
Note: Specifications shown above were obtained using SENKO recommended products and procedures.

PART NUMBER	DESCRIPTION	HOUSING	BOOT COLOR
318-191-627	XPFit Plus SC Connector SM: PC 900µm/250µm	Blue	White
318-091-427	XPFit Plus SC Connector SC: APC 900µm/250µm	Green	White
318-291-727	XPFit Plus SC Connector MM: 50/125 900µm/250µm	Black	White
318-391-927	XPFit Plus SC Connector MM :62.5/125 900µm/250µm	Beige	White
318-491-527	XPFit Plus SC Connector MM: 50/125 10G OM3900µm/250µm	Aqua	White

318-191-627 ORDER CODE example

ASSEMBLY PROCEDURE

- NO EPOXY
- NO POLISHING



XP Fit Plus SC Field Installable Connector

XP FIT PLUS LC CONNECTOR



FIT PLUS

The XP Fit Plus is a pre-polished, pre-assembled connector compatible with the standard LC connector. In place of epoxy, an internal mechanical grip gently but effectively holds the fiber in place and can be installed in under two minutes. Without polishing or adhesives,

the XP Fit Plus makes field installations quick and easy, eliminating the need for epoxy curing and hand polishing at the work site. The XP Fit Plus comes with an assembling jig and fiber holder, making for an accurate alignment and fiber cleave when terminating the connector.



XP Fit Plus SC Field Installable Connector

SPECIFICATION	SINGLEMODE	MULTIMODE
For XP Fit Plus LC	Typical	
Insertion Loss	0.2dB (PC) and 0.3dB (APC)	0.1 dB
Return Loss	55dB (PC) 60dB (APC)	35dB
Durability	<0.1dB change, 500 matings	
Operating Temperature	-40°C to +75°C	
Tensile	TIA/EIA 568-B.3	
Intermateability	IEC 61754-4	

Note: * Specifications shown above were obtained using SENKO recommended products and procedures.

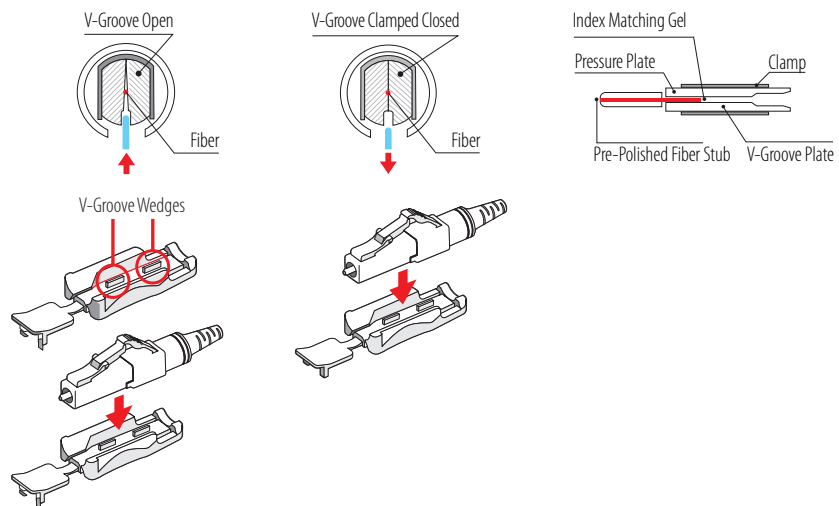
PART NUMBER	DESCRIPTION	HOUSING	BOOT COLOR
951-191-111	XPFit Plus LC Connector SM: PC 900µm/250µm	Blue	White
951-291-411	XPFit Plus LC Connector MM: 50/125 900µm/250µm	Black	White
951-391-211	XPFit Plus LC Connector MM :62.5/125 900µm/250µm	Beige	White
951-491-511	XPFit Plus LC Connector MM: 50/125 10G OM3 900µm/250µm	Aqua	White

951-191-111 ORDER CODE example

Note: The connector performance specifications include an internal mechanical splice

Features:

- Mechanical Splice (*index matching gel*)
- Highly Stable & Reliable
- Perfect Performance
- Compact Package
- RoHS Compliant
- Finished Connector meets UL94-V0 Flammability Rated



XP FIT PLUS TERMINATION KIT

The Connector Installation Tool Kit contains everything needed for installation of the SC and LC XP FIT PLUS connectors.

No epoxy, polishing film, or other consumables are required, and there is no need for electrical power, allowing installers to get in and out of installation sites quickly.

CODE	TOOL	SENKO PN
Kit Content with Flat Cleaver	Jacket and 250µm Fiber Stripper + 125µm Buffer Remover	AFT-T-223-S
	Thermal Buffer Removal Tool	AFT-T-TBR
	Replacement Blade Set	AFT-T-TBR-R
	Precision Cleave Tool (<i>Flat</i>)	AFT-T-CL-SMT
	Lint Free Dry Wipes	AFT-A-KW
	Fiber Optic Cleaning Pen	AFT-A-EWP
	Kevlar Scissors	AFT-T-KS
	Fibre Disposal Unit	AFT-A-FU
	Fine Permanent Marker Pen	AFT-A-PMB
	Fibre Checker	AFT-G-FC
	2.5mm to 1.25mm Adapter	AFT-G-CAC
	Soft Case	AFT-A-CS-XP

XPF - P - F ORDER CODE example

CODE	TOOL	SENKO PN
Kit Content with Angled Cleaver	Jacket and 250µm Fiber Stripper + 125µm Buffer Remover	AFT-T-223-S
	Thermal Buffer Removal Tool	AFT-T-TBR
	Replacement Blade Set	AFT-T-TBR-R
	Precision Cleave Tool (<i>Angle</i>)	AFT-SE-AFC-08
	Lint Free Dry Wipes	AFT-A-KW
	Fiber Optic Cleaning Pen	AFT-A-EWP
	Kevlar Scissors	AFT-T-KS
	Fibre Disposal Unit	AFT-A-FU
	Fine Permanent Marker Pen	AFT-A-PMB
	Fibre Checker	AFT-G-FC
	2.5mm to 1.25mm Adapter	AFT-G-CAC
	Soft Case	AFT-A-CS-XP

XPF - P - A ORDER CODE example

Note: The contents of this Kit are the same as the XPF-P-F, but alternatively, includes an Angled Cleaver

Features:

- Fast installation to Minimize onsite labour costs
- Compatible with conventional LC & SC connectors and adaptors
- Easy operation
- Quick assembly in under 2 minutes
- No adhesive or polishing required
- Compact tool without electric power



XP FIT PLUS CONNECTOR TOOLS

The XP Fit Plus Connectors are supplied in conjunction with specific tools for easy termination in the field.

The XP Fit Plus SC 900µm pack includes:

- 100 pcs. SC SM PC connectors
- 100 pcs. Boots
- 2 Fiber Holder
- 2 Assembling Jig

The same tools are provided for LC XP FIT PLUS.



PREMIUM ATTENUATORS

SENKO's Premium Attenuators are GR 910 certified by Expor Laboratories (SC APC and LC UPC). The Premium Attenuator passed all required mechanical testing including the extended life 5,000 hour environmental testing, and the solid body LC Attenuator has a stronger

design for greater mechanical durance. The Compact LC Housing reduces the overall length, while the wavelength independent premium fiber allows a wide range of usage including existing PON Network.



SC Attenuator



SC APC Attenuator



FC Attenuator



FC APC Attenuator



ST Attenuator



LC Attenuator



MU Attenuator

SPECIFICATION

For Attenuators

Return Loss	≥ 55dB (UPC) ≥ 65dB (APC)
Attenuation Tolerance	1 to 10dB : ±0.5, 11 to 30 dB : ±5% (for 3 wavelength)
Operational Wavelengths	1310 ± 40nm, 1490 ± 20nm, 1550 ± 40nm
Operating Temperature	-40 to +75°C
Maximum Power	500mw

Note: For full wavelength type (1270 ~ 1650) Attenuation tolerance will be 1db to 10db 0.7db and 11db to 30db ±10%.

CODE		TYPE	ATTENUATOR LEVEL		ATTENUATOR TOLERANCE	
ATN	Dope Fiber Attenuators	432 SC / APC	01	1dB	1	Premium
		532 FC / APC	02	2dB		
		632 SC / UPC	03	3dB		
		732 FC / UPC	04	4dB		
		832 ST / UPC	05	5dB		
		1432 MU / UPC	06	6dB		
		1532 LC / UPC	07	7dB		
			08	8dB		
			09	9dB		
			10	10dB		
			12	12dB		
			15	15dB		
			20	20dB		
			25	25dB		

ATN - 632 - 04 - 1 ORDER CODE example

Note: Custom configurations available upon request

Features:

- SC and LC GR910 Certified
- Dope Fiber Technology
- Wide Operating Wavelength (1270 ~ 1650)
- Low Back Reflection
- High Durability over High Power
- One piece housing construction including LC & MU for better side load performance
- Metal-ion doped fiber (continuous)
- Attenuation levels ranging from 1dB to 30dB

TERMINATORS

SENKO fiber optic terminators use doped fiber designs to eliminate unwanted back-reflection. The terminators are available in FC and SC with

UPC or APC polishes, and also in small form factor design including LC and MU with APC and UPC Polishes.

SPECIFICATION

For Terminators

Return Loss	≥ 55dB (UPC) ≥ 65dB (APC)
Operating Temperature	-40 to +75°C
Operating Wavelength	1250-1650
Maximum Power	500mw

Note: Specifications shown above were obtained using SENKO recommended products and procedures.

CODE	TYPE	POLISH	DESIGN
TRM	1 SC	2 UPC	1 Doped fiber
	2 FC	3 APC	
	3 ST		
	4 LC		
	5 MU		

TRM - 1 - 3 - 1 ORDER CODE example

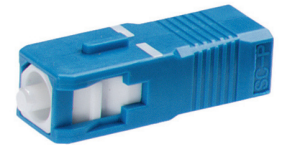
Note: Custom configurations available upon request

Features:

- Dope Fiber Technology
- Wide Operating Wavelength
- Low Back Reflection
- High Durability over High Power



FC Terminator



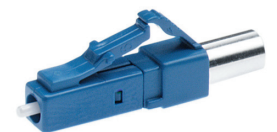
SC Terminator



ST Terminator

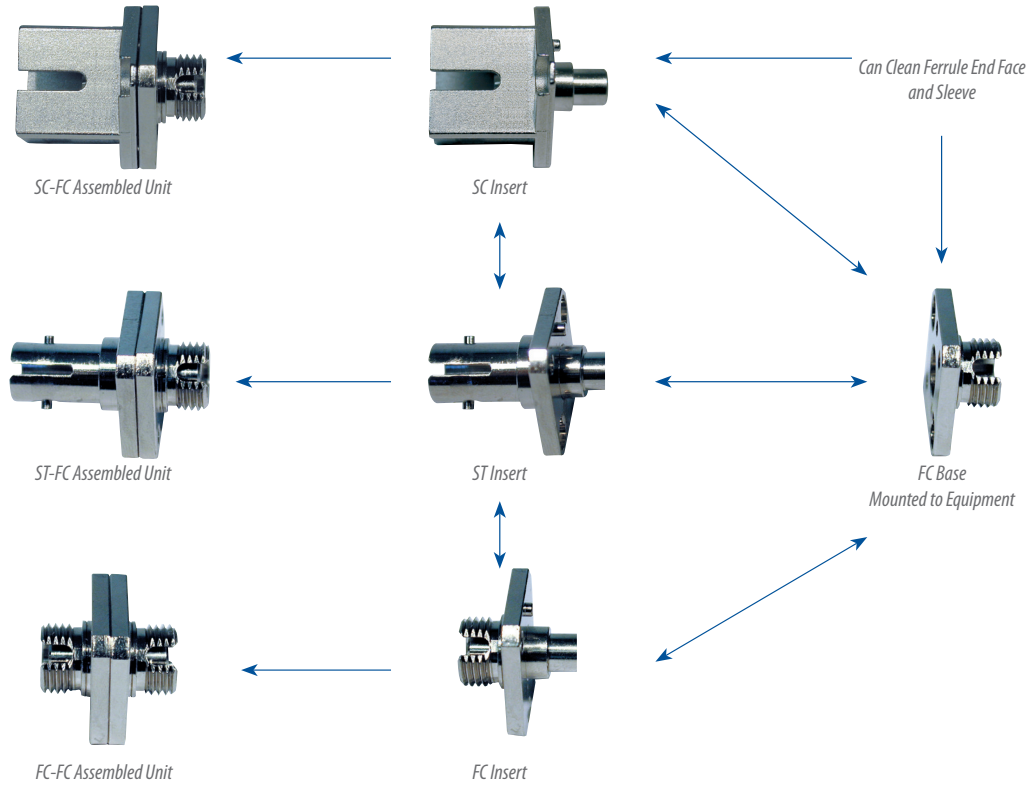


MU Terminator



LC Terminator

SWITCHABLE ADAPTER



EASY SWITCHING ADAPTER INTERFACE

The switchable adapter allows test equipment and optical module manufactures to easily change the output adapter interface from FC to SC to ST.

For FC and SC, PC type and APC type are available.

EASY TO CLEAN

While changing the adapter interface the Switchable Adapter allows the end user to properly clean both the end face of the jumper on both of the adapters as well as the adapter sleeve without removing the entire adapter from the panel.

ADAPTER CONFIGURATION

- FC PC to FC PC
- FC APC to FC APC
- FC PC to SC PC
- FC APC to SC APC
- FC PC to ST PC

CODE	SLEEVE CODE	KEY WIDTH CODE
321 FC to FC Switchable Adapter	1 Zirconia Straight Split	01 For PC Connector 2.15 +0.05/-0
322 FC to ST Switchable Adapter	2 Metal Straight Split	02 For APC Connector 2.05 ±0.02
323 FC to SC Switchable Adapter		

321-102 ORDER CODE example

CODE	PART NUMBER	SLEEVE	KEY WIDTH
FC Switchable Adapter Insert	UA-50007-101 PC	Zirconia	2.15/2.20
FC APC Adapter Insert	UA-50007-102 APC	Zirconia	2.03/2.07
ST Switchable Adapter Insert	UA-50008-101	Zirconia	
SC PC Switchable Adapter Insert	UA-50009-101 PC	Zirconia	
SC APC Adapter Insert	UA-50009-102 APC	Zirconia	

UA-50007-101 PC ORDER CODE example

STANDARD CONNECTOR SERIES
SMALL FORM FACTORS
SPECIALTY PRODUCTS
FERRULES AND SLEEVES
POLISHING SYSTEMS

pg. 04
pg. 24
pg. 40
pg. 48
pg. 54



FERRULE AND SLEEVES

Zirconia Ferrules SC-APC and FC-APC	pg. 48
Zirconia Ferrules SC and FC Singlemode	pg. 48
Zirconia Ferrules SC and FC Multimode	pg. 49
Zirconia Ferrules ST Singlemode and Multimode	pg. 49
Zirconia Ferrules LC and MU Multimode	pg. 50
Zirconia Ferrules LC and MU Singlemode	pg. 50
Zirconia Sleeves	pg. 51
Phosphor Bronze Sleeves	pg. 52

SC-APC and FC-APC

SC/FC APC ZIRCONIA FERRULE

SPECIFICATION

For Zirconia Ferrules SC-APC and FC-APC

Material	Zirconia
Concentricity (Standard)	Singlemode ≤ 1 micron
Inner Diameter Tolerance	Singlemode $+1/-0$ micron
Outer Diameter Tolerance	Singlemode ± 0.5 micron
Length Tolerance (No flange)	10.5 ± 0.05 mm
V-Groove	$60/90 \pm 5$ degrees

Note: When following SENKO recommended procedures



Step Zirconia Ferrule
SC-APC and FC-APC



Cone Zirconia Ferrule
SC-APC and FC-APC

CONNECTOR	TYPE	END FACE	ID	FLANGE
C SC & FC Connectors	S Singlemode	AS APC Step	125 125 μ m	NN No Flange*
		AC APC Conical	1255 125.5 μ m	FA APC Flange*
			126 126 μ m	*Flange key width 1.35mm

CSAS - 1255 - NN ORDER CODE example

- Note:** 1. Custom length, inner and outer diameter dimensions available upon request
2. *0.5 μ m concentricity also available

Features:

- High performance and durability
- Low insertion loss*
- Low back reflection*
- Standard and custom configuration
- APC type with various endface configurations, as well as pre-angled endface for quick polishing and ultra low back-reflection

SC and FC Singlemode

SC/FC SM UPC ZIRCONIA FERRULE

SPECIFICATION

For Zirconia Ferrules SC and FC Singlemode

Material	Zirconia
Concentricity (Standard)	Singlemode ≤ 1 micron
Inner Diameter Tolerance	Singlemode $+1/-0$ micron
Outer Diameter Tolerance	Singlemode ± 0.5 micron
Length Tolerance (No flange)	10.5 ± 0.05 mm
Spherical Radius (Pre-Dome)	$20 + 5/-10$
V-Groove	$60/90 \pm 5$ degrees

Note: When following SENKO recommended procedures



Zirconia Ferrule
SC Singlemode



Zirconia Ferrule SC
Singlemode No Flange

CONNECTOR	TYPE	END FACE	ID	FLANGE
C SC & FC Connectors	S Singlemode	PC Pre-dome	125 125 μ m	NN No Flange
			1255 125.5 μ m	F4 4 Slot Flange
			126 126 μ m	

CSPC - 1255 - NN ORDER CODE example

SC/FC MM PC ZIRCONIA FERRULE

SC and FC Multimode

SPECIFICATION
For Zirconia Ferrules SC and FC Multimode

Material	Zirconia
Concentricity (Standard)	Multimode ≤ 4 micron
Inner Diameter Tolerance	Multimode +4/-0 micron
Outer Diameter Tolerance	Multimode ±1 micron
Length Tolerance (No flange)	10.5 ±0.1mm
Spherical Radius (Pre-Dome)	20 + 5/-10
V-Groove	60/90 ±5 degrees

Note: When following SENKO recommended procedures



Zirconia Ferrule
SC and FC Multimode



Zirconia Ferrule
SC and FC Multimode No Flange

CONNECTOR	TYPE	END FACE	ID	FLANGE
C SC & FC Connectors	M Multimode	PC Pre-dome	127 127µm	NN No Flange
			144 144µm	F4 4 Slot Flange
			230 230µm	

CMPC - 127 - NN ORDER CODE example

Note: Custom length, inner and outer diameter dimensions available upon request

ST SM/MM ZIRCONIA FERRULE

ST Singlemode and Multimode

SPECIFICATION	SINGLEMODE	MULTIMODE
---------------	------------	-----------

For Zirconia Ferrules ST

Material	Zirconia	
Concentricity (Standard)	≤1 micron	≤ 4 micron
Inner Diameter Tolerance	+1/-0 micron	+4/-0 micron
Outer Diameter Tolerance	±0.5 micron	±1 micron
Length Tolerance (No flange)	12.7 +/- 0.05	12.70 +/-0.1
Spherical Radius (Pre-Dome)	20 + 5/-10	
V-Groove	60/90 ±5 degrees	

Note: When following SENKO recommended procedures



For ST Singlemode Connector
ø 2.499mm No Flange

CONNECTOR	TYPE	END FACE	ID	FLANGE
T ST	S Singlemode	PC Pre-dome	125 125µm	NN No Flange
	M Multimode		126 126µm	
			127 127µm	

TSPC - 125 - NN ORDER CODE example

LC and MU Singlemode

LC/MU SM ZIRCONIA FERRULE

SPECIFICATION

For Zirconia Ferrules LC and MU Singlemode

Material	Zirconia
Concentricity (Standard)	Singlemode ≤1 micron
Inner Diameter Tolerance	Singlemode +1/-0 micron
Outer Diameter Tolerance	Singlemode ±0.5 micron
Length Tolerance (No flange)	6.5 ±0.5mm (MU) 6.5 ±0.7mm (LC)
V-Groove	60/90 ±5 degrees



Zirconia Ferrule
LC Singlemode



Zirconia Ferrule
MU Singlemode

Note: When following SENKO recommended procedures

CONNECTOR	TYPE	END FACE	ID	FLANGE
M MU Connectors	S Singlemode	FL Flat	125 125µm	NN No Flange
L LC Connectors			1255 125.5µm	FM MU Flange
			126 126µm	FL LC Flange

LSFL - 126 - FL ORDER CODE example

LC and MU Multimode

LC/MU MM ZIRCONIA FERRULE

SPECIFICATION

For Zirconia Ferrules LC and MU Multimode

Material	Zirconia
Concentricity (Standard)	Multimode ≤4 micron
Inner Diameter Tolerance	Multimode +4/-0 micron
Outer Diameter Tolerance	Multimode ±1 micron
Length Tolerance (No flange)	6.5 ±0.5mm (MU) 6.5 ±0.7mm (LC)
V-Groove	60/90 ±5 degrees



Zirconia Ferrule
LC Multimode



Zirconia Ferrule
MU Multimode

Note: When following SENKO recommended procedures

CONNECTOR	TYPE	END FACE	ID	FLANGE
M MU Connectors	M Multimode	FL Flat	127 127µm	NN No Flange
L LC Connectors			144 144µm	FM MU Flange
				FL LC Flange

LMFL - 127 - FL ORDER CODE example

Note: Custom length, inner and outer diameter dimensions available upon request

ZIRCONIA SLEEVES

Zirconia sleeves and tubes are precision manufactured according to strict quality and performance standards. They are available for singlemode and multimode applications. Reliable mating is assured with strictly controlled

dimensions and withdrawal force. Standard styles or FC include SC, FC, ST, D4, LC and MU, with custom designs also available. Diagonal split sleeves are available for superior durability requirements. Tubes are also available.

SPECIFICATION	ST	SC, FC	LC, MU
---------------	----	--------	--------

For Zirconia Sleeves ST, SC, FC, LC and MU

Material	Zirconia		
Withdrawal Force	200gf~600gf		100gf~250gf
Insertion Loss	Max 0.5dB, 0.1dB typical or better		
Durability	<0.02dB deviation after 1000 matings, <0.02dB after temperature cycle test		
Outer Diameter	3.2 ±0.02mm		1.62 ±0.01mm
Inner Diameter	(2.49)mm		(1.246)mm
Length	10.1 ±0.1mm	11.4 ±0.1mm	6.8 + 0/-0.1mm
Slit Width	Max 0.5 ±0.01mm		Max 0.2 ±0.01mm
Chamfer	2 x R0.1		

Note: When following SENKO recommended procedures

SLEEVE CODE	INNER DIAMETER	LENGTH
ZRS Straight Split Sleeve	25 (2.49)mm	101 10.1mm ST
ZRD Diagonal Split Sleeve		114 11.4mm SC & FC

ZRD - 25 - 114 ORDER CODE example

- Note:** 1. Outer and inner diameter dimensions in () are to be considered as references, which shall be adjusted to the required withdrawal force as specified
 2. Zirconia tubes also available
 3. Custom configurations and dimensions available upon request

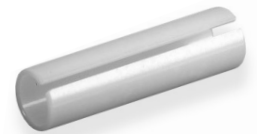
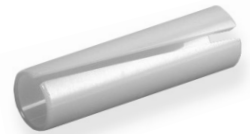
SLEEVE CODE	INNER DIAMETER	LENGTH
ZRS Straight Split Sleeve	12 (1.25)mm	680 6.8mm for LC/MU
ZRD Diagonal Split Sleeve		

ZRS - 12 - 680 ORDER CODE example

- Note:** 1. Outer and inner diameter dimensions in () are to be considered as references, which shall be adjusted to the required withdrawal force as specified
 2. Zirconia tubes also available
 3. Custom configurations and dimensions available upon request



For LC and MU Adapters Straight Split and High Performance Diagonal Split

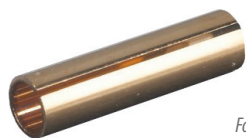


For SC and FC Adapters Straight Split and High Performance Diagonal Split

PHOSPHOR BRONZE SLEEVES

Metal split sleeves are used in adapters for aligning the connector ferrule. They are manufactured for both singlemode and multimode applications. The high quality phosphor bronze material delivers a spring-like

property which ensures a strictly controlled withdrawal force of 200 to 600 grams. Tolerance specifications are also well controlled, resulting in a typical insertion loss of 0.1dB* or less.



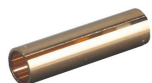
For SC and FC Adapters



For ST Adapters



For D4 Adapter



For LC and MU Adapters

SPECIFICATION	ST	SC, FC	D4	LC
For Phosphor Bronze Sleeve ST, SC, FC, D4 and LC				
Material	Phosphor Bronze C5210H			
Withdrawal Force	200gf~600gf			100gf~300gf
Insertion Loss	Max 0.5dB, typical 0.1 dB or better			
Outer Diameter	(3.08)mm		(2.48)mm	(1.62)mm
Inner Diameter	(2.48)mm		(1.98)mm	(1.25)mm
Length	10.1 ±0.1mm	11.4 ±0.1mm	10.4 ±0.1mm & 9.88 ±0.1mm	6.8 ±0.1mm
Slit Width	Max 0.5mm			Max 0.2mm
Chamfer	2 x 0.1 +0.1/-0			

Note: When following SENKO recommended procedures

SLEEVE CODE	INNER DIAMETER	LENGTH
PBS Phosphor Bronze	25 (2.48)mm	101 10.1mm ST 114 11.4mm SC & FC

PBS - 25 - 114 ORDER CODE example

Note: Outer and inner diameter dimensions in () are to be considered as references, which shall be adjusted to the required withdrawal force as specified

SLEEVE CODE	INNER DIAMETER	LENGTH
PBS Phosphor Bronze	12 (1.25)mm	680 6.80mm

PBS - 12 - 680 ORDER CODE example

Note: Outer and inner diameter dimensions in () are to be considered as references, which shall be adjusted to the required withdrawal force as specified

Features:

- High quality phosphor bronze material
- High performance and superior durability
- Low insertion loss*

STANDARD CONNECTOR SERIES
SMALL FORM FACTORS
SPECIALTY PRODUCTS
FERRULES AND SLEEVES
POLISHING SYSTEMS

pg. 04
pg. 24
pg. 40
pg. 48
pg. 54



POLISHING SYSTEMS

APC 8000 High Volume Polisher pg. 54
Polishing Fixture Package pg. 55
Polishing Rubber Pads pg. 55
Polishing System pg. 56
Polishing Films pg. 57

High Volume Polisher

APC-8000

The APC-8000 features a touch screen HMI. The touch screen UI layout provides a fast and smooth user experience, improving operations efficiency for both programmer and operator. The APC-8000 software capabilities and safety features make it easy and safe to use. The automated on-screen step-by-step guidance system helps reduce operator errors.

The combination of a loadcell, variable platten speed, 35 polishing recipe storage capacity, and ability to apply force per ferrule makes the APC-8000 a very accurate and versatile polisher. The loadcell constantly monitors the force applied allowing the APC-8000 to adjust polishing pressure on the fly, providing constant even pressure throughout the polishing process. These attributes mean the APC-8000 can easily achieve endface geometry requirements as specified by the GR-326 and IEC industry standards. Ideally suited for multi fiber (MPO and MTP) as well as single connector types.

Semi-automatic (*manual*) mode is useful in allowing the programmer to tweak existing polishing recipes or create new ones by altering platten speed, pressure, time and film type.

Please contact a SENKO representative for more information.

Features:

- Surpasses GR-326 and IEC endface geometry specifications
- Ideal for MPO and MTP polishing
- Touch screen HMI provides an intuitive user interface for both programmer and operator
- Step-by-step guidance and on-screen warning system
- Wide range of speeds for greater control over polishing process and throughput
- Semi-automatic (*manual*) mode for program fine tuning and creation
- 35 polishing recipe storage capacity, with each recipe containing up to 10 steps
- Programmable automated water spray function
- Polishing pressure calculated per ferrule
- Enhanced fixture-to-platten alignment mechanism for elimination unwanted motion in horizontal plane

Connector Capability:

- LC-UPC, LC-APC
- MU-UPC
- SC-UPC, SC-APC
- FC-UPC, FC-APC
- ST-UPC
- E2000™, E2000™-APC
- MT-RJ, MT, Angled MT
- SMA



APC-8000

PART NUMBER
APC-8000

APC-8000 ORDER CODE example



Fixture to Platten Locking Mechanism

- Fixture incorporates 3 locator posts which mate firmly with slots in the safety cover assembly during locked position
- Locking mechanism confines motion to a vertical plane, eliminating unwanted horizontal motion
- Offers consistent polishing results even at high platten speeds
- User can polish as little as three connectors at a time



Safety Features

- CE Approval
- Sensor detects when cover is open and prevent operation
- Emergency stop button with key-operated release
- Machine does not operate unless fixture posts are aligned with cover and fixture is in contact with rubber pad and platten
- Polishing machine stalls if it senses an obstruction between the fixture and the platten before the 3 locator posts are in place

POLISHING FIXTURES

PART NUMBER	POLISHING FIXTURE	CONNECTOR CAPACITY
Connector Polishing Jigs		
MU-PC1.25-24-8	MU One-Piece Connector Fixture	24
LC-PC1.25-24-8	LC One-Piece Connector Fixture	24
E-2000-APC-12-8	E-2000 APC Connector Fixture	12
SC-APC2.5-18-X (<i>x=c for Cone, x=s for Step</i>)	SC/APC One-Piece, 2.5mm Connector Fixture	18
FC-APC2.5-18-X (<i>x=c for Cone, x=s for Step</i>)	FC/APC One-Piece, 2.5mm Connector Fixture	18
SC-UPC2.5-18-8	SC/UPC One-Piece, 2.5mm Connector Fixture	18
SC-UPC2.5-18-8	SC/UPC One-Piece, 2.5mm Connector Fixture	18
FC-UPC-2.5-18-8	FC/UPC One-Piece, 2.5mm Connector Fixture	18
ST-UPC2.5-18-8	ST/UPC One-Piece, 2.5mm Connector Fixture	18
SMA-12-8	SMA Fixture, Only for 1-Piece Connectors	12
Ferrule Polishing Jigs		
UPC-1.25-36-9	LC/MU Locking Ferrule Fixture	36
UPC-2.5-24-8	2.5mm UPC Locking Ferrule Fixture	24
UPC-LF	Universal Loading Fixture	
MT/MPO Jigs		
MT-12-8	MT Fixture	12
AMT-12-8	Angled MT Fixture	12
MT-RJ-24-8		

MU-1.25-24-8 ORDER CODE example



FC Fixture



MT Fixture



LC Fixture

RUBBER POLISHING PADS

All rubber pad consumables are certified for hardness and parallelism. Pads are available with durometer specifications and color coding found below.

SPECIFICATION

For Polishing Rubber Pads

Thickness	0.5mm ~ 5.5mm
Parallelism	± 0.05mm
Durometer	40 ~ 90
Durometer Tolerance:	± 2.5

Note: 4.8mm, 4.9mm thicknesses and custom types available upon request.

PART NUMBER	COLOR	DESCRIPTION
RUGNG55.0-90	Black	5" x 5mm 90 Duro
RUGNG55.0-85	Grey	5" x 5mm 85 Duro
RUGNG55.0-80	Green	5" x 5mm 80 Duro
RUGNG55.0-75	Brown	5" x 5mm 75 Duro
RUGNG55.0-70	Violet	5" x 5mm 70 Duro
RUGNG55.0-65	Dark Blue	5" x 5mm 65 Duro
RUGNG55.0-60	Blue	5" x 5mm 60 Duro
RUGNG55.0-55	Rust	5" x 5mm 55 Duro
RUGNG55.0-50	Red	5" x 5mm 50 Duro
RUGNG55.0-45	Burgundy	5" x 5mm 45 Duro
RUGNG55.0-40	Orange	5" x 5mm 40 Duro

RUGNG55.0-90 ORDER CODE example



Polishing Rubber Pads

Polishing Films

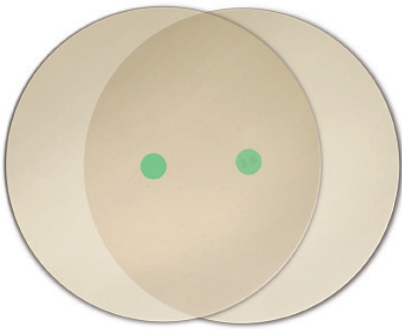
POLISHING FILMS

SENKO Polishing Films are available with surface textures and particle density to suit the end user's performance requirements. Films are lot tested for quality, consistency and longevity.

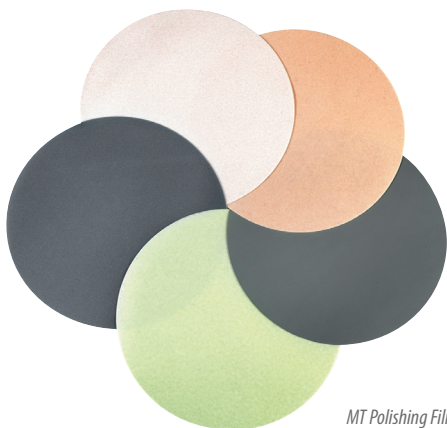
A range of films are available for epoxy removal, grinding, fine polish and cleaning of industry standard fiber optic connectors and ferrules.



LFD Diamond



LFD Diamond



MT Polishing Films

Features:

- Consistent particle deposition
- Various film diameters
- Various particle sizes

POLISHING FILMS PRODUCT NUMBER	DESCRIPTION	DIAMETER
LFC010-XN	Silicon Carbide, 30.0µm	(X) Specify 4" or 5"
LFC030-XN	Silicon Carbide, 15.0µm	(X) Specify 4" or 5"
LFC050-XN	Silicon Carbide, 9.0µm	(X) Specify 4" or 5"
LFD09-XN	Diamond, 9.0µm	(X) Specify 4" or 5"
LFD06-XN	Diamond, 6.0µm	(X) Specify 4" or 5"
LFD03-XN	Diamond, 3.0µm	(X) Specify 4" or 5"
LFD01-XN	Diamond, 1.0µm	(X) Specify 4" or 5"
LFOS01-XN	UPC Final Polishing Film	(X) Specify 4" or 5"
LFF500-5N	Cleaning Film	5 inches

LFC010-XN ORDER CODE example

MT POLISHING FILMS PRODUCT NUMBER	DESCRIPTION
LFC010-5NP	PSA Type, Silicon Carbide, 30.0µm
LFC030-5NP	PSA Type, Silicon Carbide, 15.0µm
LFC200-5NP	PSA Type, Silicon Carbide, 3.0µm
LFFC200-5NP	PSA Type, Flocked Silicon Carbide, 3.0µm
LFFA0250-5NP	PSA Type, Flocked Aluminum Oxide, 1.0µm
LFFA0300-5NP	PSA Type, Flocked Aluminum Oxide, 0.5µm
LFFC0300-5NP	PSA Type, Flocked Cerium Oxide, 0.5µm
LFF500-5N	Non-PSA Type Buffing Film
LSS-1	Colloidal Silica Suspension

LFC010-5NP ORDER CODE example

POLISHING FILMS

FOS-01 Final Polish Series

Final Polishing Film, FOS-01 is a highly efficient final polishing film manufactured using an advanced coating technology. This superior polishing film is formulated using ultra-fine particles which are uniformly deposited on a

polyester film surface, without irregular height protrusions. FOS-01 is specifically designed for polishing fiber optic connector ferrules used in high performance applications.

SPECIFICATION

For FOS-01

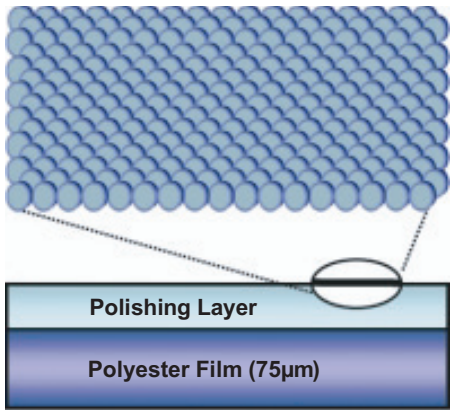
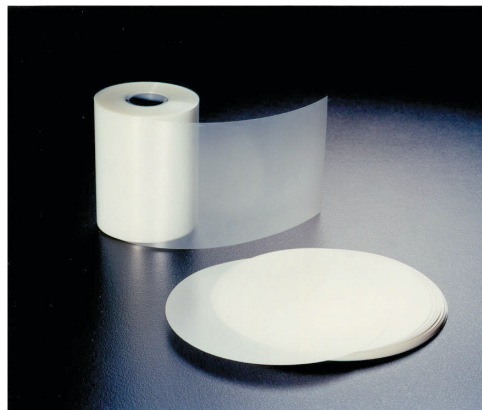
Particle Size	< 0.1µm
Coating Weight	6.0g/m ²
Film Surface Roughness	0.15µm
Polisher	All SENKO APC Series Polishers
Return Loss	< - 55dB
Fiber Height	0~50nm
Radius of Curvature	10~25mm
Apex Offset	< 50µm

Note: U.S. Patented

- Features:**
- Easy to use
 - Clean (slurry-free) work environment
 - Simplified polishing process
 - Polishes without scratching, ideal for connectors used in high performance applications
 - Special binder containing ultra-fine polishing particles <0.1µm in size
 - Excellent uniformity of particle deposition

POLISHING FILM FOS-01 and LFD SERIES PRODUCT NUMBER	DESCRIPTION
LFOS-01-5	UPC Final Polishing Film, 5 Inch Diameter
LFOS-01-6x6	UPC Final Polishing Film — 6 x 6 Inch Square

LFOS-01-5 ORDER CODE example



FOS-01 Series



FOS-01 Series



SENKO Advanced Components, Incorporated is a recognized global leader in the design, production, sales, marketing and distribution of over 1000 fiber optic products. It is headquartered in Boston, Massachusetts, USA and is the fiber optic division of the Japan based SENKO Group.

The SENKO Group is a family of companies serving clients in the Electronic / Electrical, Telecom / Fiber Optic, and Automotive / Industrial industries. We continually expand our product line to suit your business needs, both through innovations in product design and via international partnerships. Our top quality products are backed with superior technical support and logistic services provided by our worldwide facilities.



SENKO ADVANCED COMPONENTS, INC.

Americas

USA EAST 1-888-32-SENKO
USA WEST 1-858-623-3300
Sales-Americas@senko.com

Asia

HONG KONG +852-2121-0516
SHANGHAI +86-21-5830-4513
SHENZHEN +86-755-2533-4893
Sales-Asia@senko.com

Europe

UK +44 (0) 118 982 1600
ITALY +39 011 839 9828
POLAND +48 71 711 10 93
Sales-Europe@senko.com

Asia Pacific

AUSTRALIA +61 (0) 3 9755-7922
Sales-Asia-Pacific@senko.com

Middle East North Africa

Dubai +971 4 8865160
Sales-MENA@senko.com

Japan

TOKYO +81 (0) 3 5825-0911
Sales-Japan@senko.com

WWW.SENKO.COM