

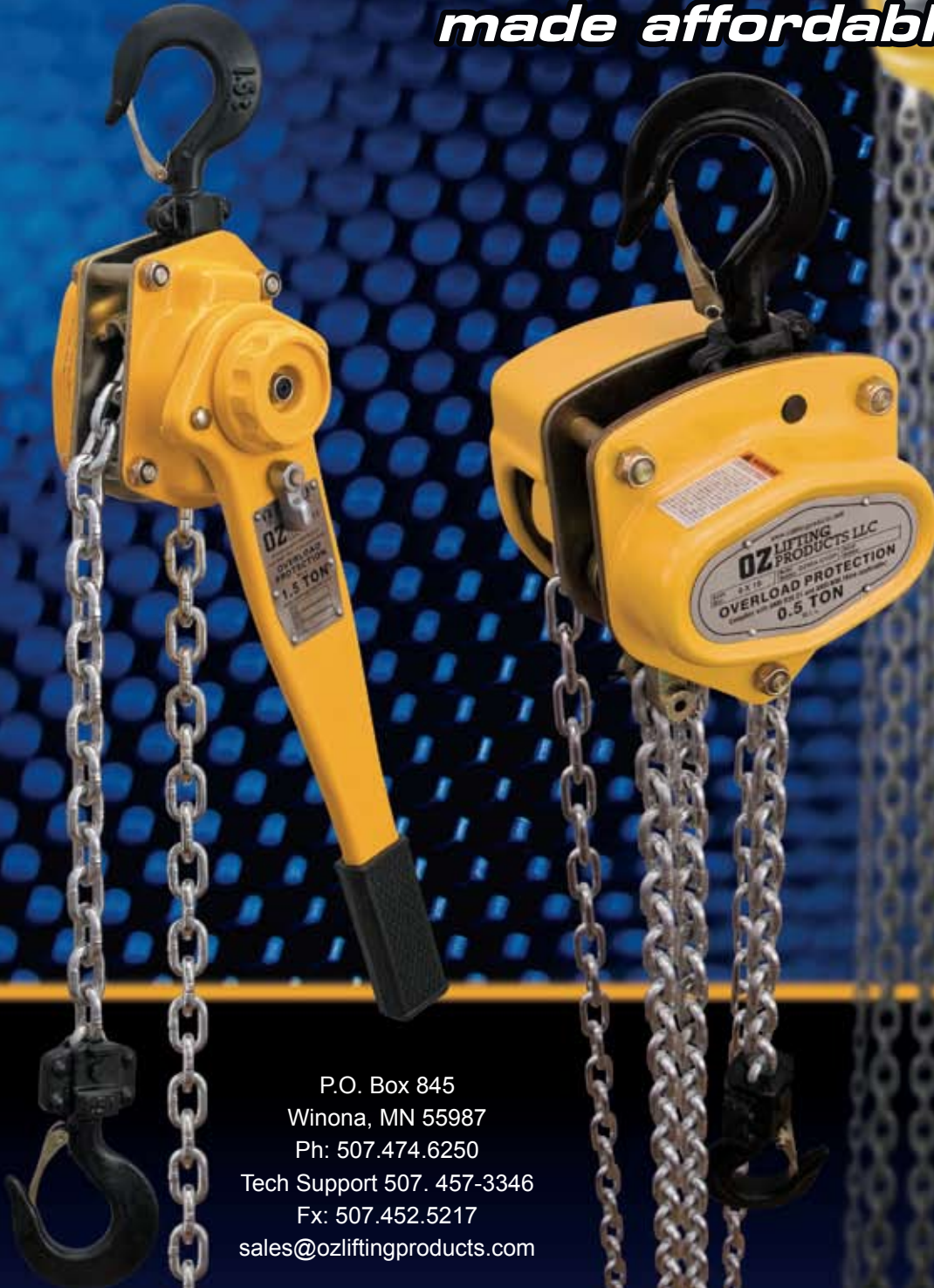
Quality Lifting Solutions

**Overload
Protection**



OZ LIFTING PRODUCTS LLC

***Overload protection
made affordable***



P.O. Box 845
Winona, MN 55987
Ph: 507.474.6250
Tech Support 507. 457-3346
Fx: 507.452.5217
sales@ozliftingproducts.com

www.ozliftingproducts.com – (800) 749-1064

OVERLOAD PROTECTION

Every OZ lever Hoist rated .75 through 9 ton and chain hoists rated .5 ton through 50 ton come **standard with OVERLOAD PROTECTION**. This feature is to protect the operator and take the guesswork out of the weight of the load. If you guessed wrong the hoist will transition into overload. The cost of maintaining hoists fall into three categories: Injuries, Lost Production and Maintenance Costs, OVERLOAD PROTECTION helps reduce these costs and risk of injury.

The OZ hoist is **triple tested at our factory to 150% of the hoist's rating** and then the overload is set. At OZ we advise to never lift a load that weighs more than the rating of the hoist, however, if activated the hoist will transition into an overload alerting the operator they are above the hoist's rating, thus preventing further operation. Once activated, the operator has the opportunity to lower the load if lifting or release the load if pulling, then select a larger capacity hoist or consult a lifting specialist for another means of operation.



*Overload protection
made affordable*

AVAILABLE ONLINE

www.ozliftingproducts.com

Downloads:

- Product Catalog
- Spareparts List
- Lever Hoist Pre-load Information
- Operators Manuals
- Product Pictures
- Product Dimensions & Specification Charts

Videos:

- Chain Hoist & Lever Hoist - the basics
- Products' Features and Benefits
- Overload Protection
- Product Disassembly
- Product Assembly

and much more...



P.O. Box 845 Winona, MN 55987 • Tf: (800) 749-1064
Ph:(507) 474-6250 | Fx: (507) 452-5217 | Tech Support: (507) 457-3346
sales@ozliftingproducts.com | www.ozliftingproducts.com

PRODUCT STANDARDS

All chain hoists and lever hoists meet or exceed the following standards:

- CE
- AS 1418.2
- ANSI B30.21
- ANSI B30.16

Trolleys and beam clamps meet the following standards:

- ANSI B30.10
(for use with manual or powered hoists)
- CE
- AS 1418.2

Our manufacturing plant and products comply with the following certifications



AS 1418.2

CE

ISO9001

All OZ products come with a test certificate and serial number dedicated to the individual product which provides full traceability

Product Test Certificate

TEST CERTIFICATE

This is to certify that the nominated size and quality of the following **OZ LIFTING PRODUCT LLC** product has been thoroughly inspected and tested, using the pre-determined load.

Description:

Serial Number:

Model Number:

Chain Size and Grade:

W.L.L.:

Proof Load Applied:

Date:

Authorized Signature:

Manufactured and triple tested for and on behalf of:

 P.O. Box 845 Winona, MN 55987
Phone: (800) 749-1064
(507) 474-6250
Fax: (507) 452-5217
sales@ozliftingproducts.com
www.ozliftingproducts.com



P.O. Box 845 Winona, MN 55987 • Tf: (800) 749-1064
Ph:(507) 474-6250 | Fx: (507) 452-5217 | Tech Support: (507) 457-3346
sales@ozliftingproducts.com | www.ozliftingproducts.com

LEVER HOIST AND CHAIN HOIST

FEATURES AND BENEFITS OF BOTH PRODUCTS

(additional features and benefits listed on pages 5 and 6)

With
**Overload
Protection**

Minimal Load Lifting Effort

This is standard on all hoists and is factory set. The overload is integral with the hoist and prevents the operator from overloading the hoist. When activated, the overload will not allow hoist operation. When the overload is activated, lower the load, if lifting, or release the load, if pulling. Then select a larger capacity hoist, or consult a lifting specialist for another means of operation.

Fully Enclosed Gearing

These hoists require **20% - 30% less effort** than the competition. Lift heavy loads with ease. Ideal for frequent lifting/pulling applications.

Electro Zinc Plated Hand & Load Chain

This protects the gears from contamination and debris.

All Steel Construction

Provides a durable non oily finish.

Forged Alloy Steel Hooks Cast Steel Safety Latches

These hoists are strong, durable and rugged, providing a long and dependable service life.

Weather Proof Load Holding Brake

Each heavy duty cast steel safety latch has a bolt and lock nut connection rather than roller pins used by most competitors. This feature facilitates changing latches in the field.

All Gears and Shafts Run on Roller Bearings

Both hoists have a protected Weston Brake which holds the load during the entire operation. The hoists are also equipped with a unique **twin pawl design**.

Stainless Steel Riveted ID Tags

This feature provides smooth controlled operation as well as maintenance free lubrication.

Safety Yellow Powder Coating

These tags will not rust and will maintain clear distinct information for easy identification.

Maintenance

This process provides a long lasting finish in hostile environments.

Certification

Hoists can be quickly disassembled for fast and easy maintenance.

See "How To" video at www.ozliftingproducts.com

Each hoist is load tested and comes with a serial number and test certificate dedicated to each hoist. This provides complete traceability throughout the manufacturing process.



P.O. Box 845 Winona, MN 55987 • Tf: (800) 749-1064
Ph:(507) 474-6250 | Fx: (507) 452-5217 | Tech Support: (507) 457-3346
sales@ozliftingproducts.com | www.ozliftingproducts.com

LEVER HOIST

FEATURES AND BENEFITS

(additional features and benefits listed on page 4)

Free Wheel Feature - When not under load, the operator can disengage the gearing by positioning the selection switch to the center position. This allows for a quick adjustment of chain for faster operation.

Machined Lift Wheel - This wheel perfectly accepts the chain allowing for a smooth long lasting operation.

Pull Handle / Safety Chain Stop - When not under load, this feature allows for quick disengagement of gearing which allows for fast movement of the load hook. The safety chain stop is designed and load tested to hold the load in the event that the entire load chain is transmitted through the hoist.

360 Degree Handle Rotation - This allows the operator to work in confined spaces.

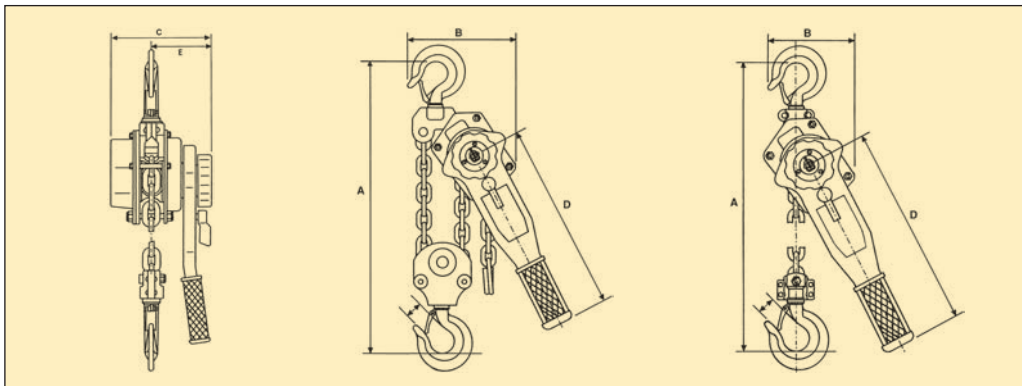
Corrosion Protection - Hoist components are powder coated to prevent corrosion. Product I.D. labels are made from stainless steel.

Fully Enclosed Lift Wheel - This maintains smooth operation while distributing the load over more links of chain. It also helps keep debris from contaminating the lift wheel and self cleans the chain as it enters the wheel.

Steel Handle with Rubber Grip - This handle provides a non slip, sure grip, surface.

Cast Steel Hand Wheel - Rotates to allow positive load chain positioning.
Lower Block - Included with multistrand hoists.

SPECIFICATIONS (0.75, 1.5, 3, 6, and 9 tons)



Product Code	OZ075LHOP	OZ150LHOP	OZ300LHOP	OZ600LHOP	OZ900LHOP	
Safe Working Lift (tons)	0.75 (t)	1.5 (t)	3 (t)	6 (t)	9 (t)	
Headroom (in)	12.79 (in)	14.96 (in)	18.90 (in)	24.41 (in)	27.56 (in)	
Effort on lever to lift full load (lbs)	30.86 (lbs)	48.50 (lbs)	70.55 (lbs)	74.96 (lbs)	79.37 (lbs)	
Number of Load Chain Falls	1	1	1	2	3	
Diameter of Load Chain (mm)	6 (mm)	8 (mm)	10 (mm)	10 (mm)	10 (mm)	
Length of Lever Handle (in)	11.02 (in)	16.14 (in)	16.14 (in)	16.14 (in)	16.14 (in)	
Dimensional Information (in)	A	12.79 (in)	14.96 (in)	18.89 (in)	24.40 (in)	27.55 (in)
	B	5.35 (in)	6.29 (in)	7.08 (in)	9.25 (in)	12.44 (in)
	C	5.82 (in)	6.77 (in)	7.87 (in)	7.87 (in)	7.87 (in)
	D	11.02 (in)	16.14 (in)	16.14 (in)	16.14 (in)	16.14 (in)
	E	3.54 (in)	3.85 (in)	4.52 (in)	4.52 (in)	4.52 (in)
Hook-opening, upper & lower (in)	1.18 (in)	1.41 (in)	1.57 (in)	1.96 (in)	2.28 (in)	
Net Weight of Head Only (lbs)	13 (lbs)	22 (lbs)	33 (lbs)	51 (lbs)	67 (lbs)	

*Standard Lift: 5,10,15, and 20 ft. - We also do custom rigging

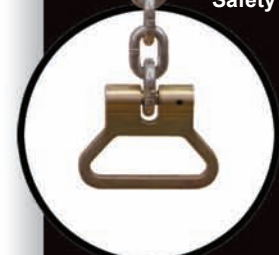
P.O. Box 845 Winona, MN 55987 • Tf: (800) 749-1064
Ph:(507) 474-6250 | Fx: (507) 452-5217 | Tech Support: (507) 457-3346
sales@ozliftingproducts.com | www.ozliftingproducts.com



FREE
Spare Set
of Latches

Test Certificate
- Included -

Pull Handle
Safety Chain Stop



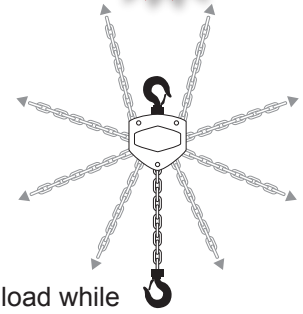
CHAIN HOIST



FEATURES AND BENEFITS

(additional features and benefits listed on page 3)

Unique Hand Wheel Design - This feature enables the hand chain to successfully feed directly into the wheel sprocket from many directions and angles. Thus, the operator can use the hoist while standing to the side of, or even above the load without fear of the hand chain jamming. See "How To" video at www.ozliftingproducts.com



Thrust Bearing on Lower Hook - Allows easy rotation of load while suspended & prevents load chain twisting.

Fully Machined Lift Wheel - This feature perfectly accepts the chain allowing for a smooth long lasting operation.

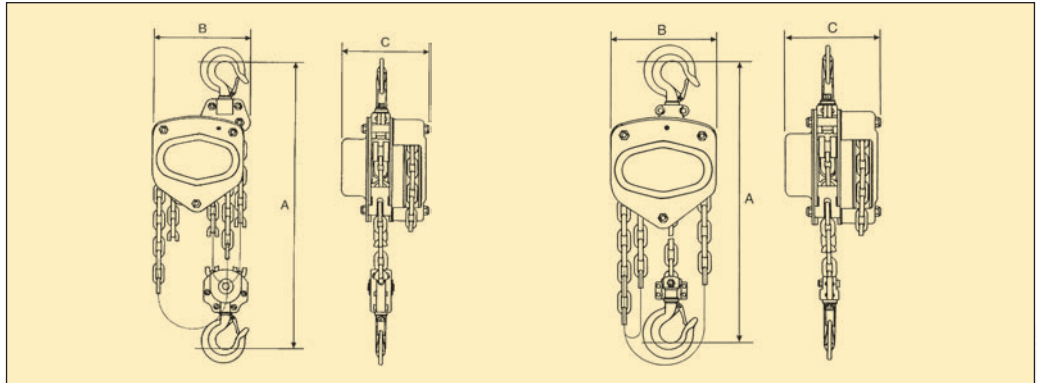
Totally Enclosed Gearing - This design protects gears from contamination and debris.

Lifting or Pulling - This hand hoist can be used for lifting or pulling which makes for a more flexible and versatile tool.

Low Headroom - Provides maximum lift by minimizing space taken up by the hoist, making it ideal in restricted space applications.

Corrosion Protection - Hoist components are powder coated to prevent corrosion. Product I.D. labels are made from stainless steel.

SPECIFICATIONS (0.5, 1, 1.5, 2, 3, 5 and 10 tons)



Product Code	OZ005CHOP	OZ010CHOP	OZ015CHOP	OZ020CHOP	OZ030CHOP	OZ050CHOP	OZ100CHOP
Safe Working Load (tons)	.5 (t)	1 (t)	1.5 (t)	2 (t)	3 (t)	5 (t)	10 (t)
Falls of Chain	1	1	1	1	2	2	4
Effort to Lift S.W.L (lbs)	50.10 (lbs)	66.14 (lbs)	70.46 (lbs)	77.16 (lbs)	59.52 (lbs)	90.39 (lbs)	85.98 (lbs)
Loadchain Diameter (mm)	6 (mm)	6 (mm)	8 (mm)	8 (mm)	8 (mm)	10 (mm)	10 (mm)
Dimensional Information (in)	A	10.62 (in)	12.48 (in)	15.70 (in)	16.29 (in)	18.30 (in)	29.52 (in)
	B	5.00 (in)	6.22 (in)	6.75 (in)	7.36 (in)	8.26 (in)	14.68 (in)
	C	5.15 (in)	5.51 (in)	6.33 (in)	6.33 (in)	6.33 (in)	7.24 (in)
Hook-opening, upper & lower (in)	1.18 (in)	1.10 (in)	1.41 (in)	1.31 (in)	1.57 (in)	1.96 (in)	2.51 (in)
Net Weight of Head Only (lbs)	17 (lbs)	22 (lbs)	31 (lbs)	35 (lbs)	39 (lbs)	67 (lbs)	115 (lbs)

*Standard Lift: 10 and 20 ft. - We also do custom rigging



P.O. Box 845 Winona, MN 55987 • Tf: (800) 749-1064
 Ph:(507) 474-6250 | Fx: (507) 452-5217 | Tech Support: (507) 457-3346
sales@ozliftingproducts.com | www.ozliftingproducts.com

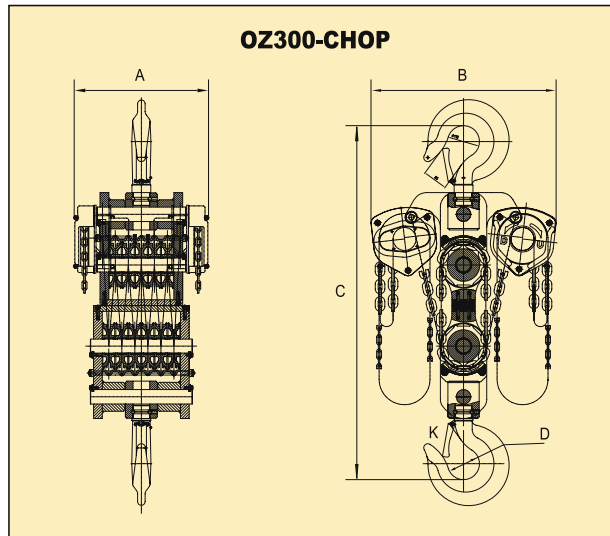
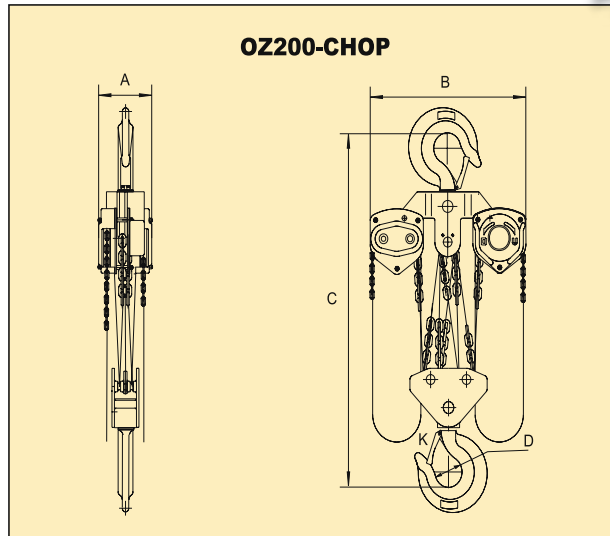
FREE
Spare Set
of Latches

Test Certificate
- Included -

20 and 30 TON CHAIN HOIST

SPECIFICATIONS (20 and 30 tons)

**With
Overload
Protection**



Model	OZ200-CHOP	OZ300-CHOP
Capacity	20 tons	30 tons
Effort required to lift rated load	112 lbs	112 lbs
Strands of load chain	8	12
Load chain diameter	10 mm	10 mm
Dimensions	A	8.39 in
	B	25.56 in
	C	35.83 in
	D	4.29 in
	K	3.34 in
	Weight: 30Ton -10ft. = 643lbs.	30Ton - 20ft. = 855 lbs
Net Weight of Head Only	254 lbs	432 lbs

**Test Certificate
- Included -**

10 mm Load Chain 1.5 lbs per/ft (12 falls)
Standard Lift: 10 and 20 ft. - We also do custom rigging

50 Ton Available.



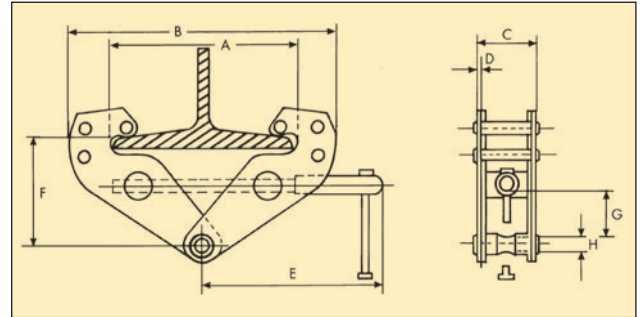
P.O. Box 845 Winona, MN 55987 • Tf: (800) 749-1064
Ph: (507) 474-6250 | Fx: (507) 452-5217 | Tech Support: (507) 457-3346
sales@ozliftingproducts.com | www.ozliftingproducts.com



BEAM CLAMP

FEATURES

- ▶ Robust all-steel construction
- ▶ Super-quick adjustment to most I-Beams (see measurements below).
- ▶ Durable baked enamel paint protection.



SPECIFICATIONS (1, 2, 3, 5 and 10 tons)

Product Code	OZ1BC	OZ2BC	OZ3BC	OZ5BC	OZ10BC
Safe Working Load (lbs)	2,000 (lbs)	4,000 (lbs)	6,000 (lbs)	10,000 (lbs)	20,000 (lbs)
Adjustable Flange Width (in)	2.95-9.05 (in)	2.95-9.05 (in)	3.15-12.60 (in)	3.54-12.60 (in)	3.54-12.60 (in)
Dimensional Information (in)	A	10.94 (in)	10.94 (in)	14.01 (in)	14.01 (in)
	B	7.16-14.96 (in)	7.16-14.96 (in)	8.66-19.68 (in)	8.66-19.68 (in)
	C	2.51 (in)	2.91 (in)	3.94 (in)	4.41 (in)
	D	.16 (in)	.24 (in)	.31 (in)	.39 (in)
	E	8.54 (in)	8.54 (in)	10.90 (in)	10.90 (in)
	F	3.54-5.90 (in)	3.54-5.90 (in)	5.71-8.66 (in)	5.71-8.66 (in)
	G	1.02 (in)	1.02 (in)	1.97 (in)	1.85 (in)
	H	.75 (in)	.83 (in)	.90 (in)	1.14 (in)
Net Weight (lbs)	9 (lbs)	11 (lbs)	21 (lbs)	27 (lbs)	35 (lbs)

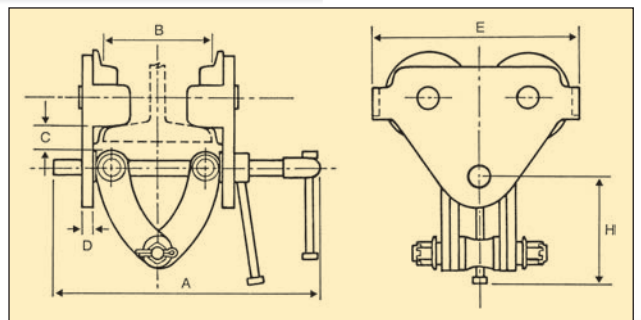
**Test Certificate
- Included -**



BEAM TROLLEY WITH CLAMP

FEATURES

- ▶ Lightweight robust construction.
- ▶ Super-quick adjustment to most I-Beams (see measurements below).
- ▶ Safety handle lock
- ▶ Durable baked enamel paint protection.
- ▶ Precision ball bearing trolley wheels.



*Wheel dimensions available on our website www.ozliftingproducts.com

SPECIFICATIONS (1, 2, 3 and 5 tons)

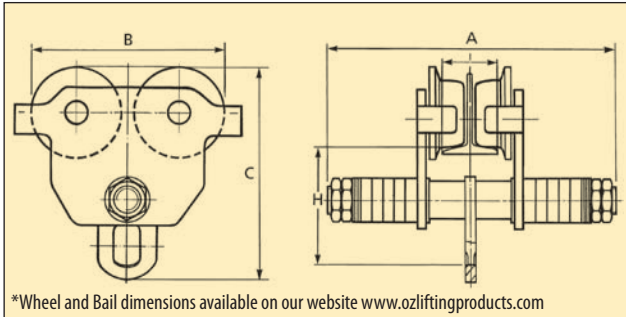
Product Code	OZ1BTC	OZ2BTC	OZ3BTC	OZ5BTC
Safe Working Load (lbs)	2,000 (lbs)	4,000 (lbs)	6,000 (lbs)	10,000 (lbs)
Adjustable Flange Width (in)	2.48-4.88 (in)	2.99-8.27 (in)	2.99-8.27 (in)	3.94-12.01 (in)
Dimensional Information (in)	A	13.58 (in)	13.58 (in)	17.72 (in)
	B	2.48-8.27 (in)	2.99-8.27 (in)	2.99-8.27 (in)
	C	1.18 (in)	1.53 (in)	1.85 (in)
	D	.31 (in)	.39 (in)	.47 (in)
	E	9.37 (in)	10.86 (in)	12.75 (in)
	H	2.48-4.88 (in)	2.99-8.27 (in)	2.99-8.27 (in)
Net Weight (lbs)	25 (lbs)	38 (lbs)	57 (lbs)	102 (lbs)

**Test Certificate
- Included -**



P.O. Box 845 Winona, MN 55987 • Tf: (800) 749-1064
Ph: (507) 474-6250 | Fx: (507) 452-5217 | Tech Support: (507) 457-3346
sales@ozliftingproducts.com | www.ozliftingproducts.com

PUSH BEAM TROLLEY



*Wheel and Bail dimensions available on our website www.ozliftingproducts.com

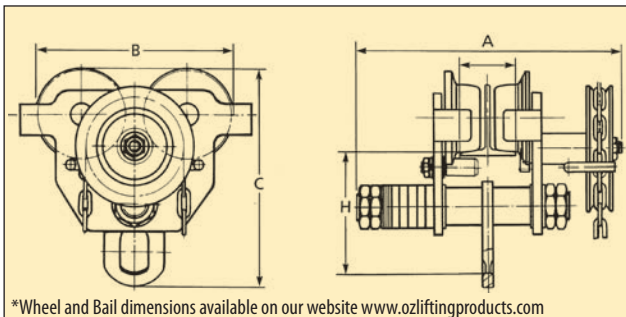
FEATURES

- ▶ Lightweight robust construction.
- ▶ Adjustable to most I-Beams (see measurements below).
- ▶ Durable baked enamel paint protection.
- ▶ Precision ball bearing trolley wheels.

SPECIFICATIONS (0.5, 1, 2, 3, 5 and 10 tons)

Product Code	OZ05PBT	OZ1PBT	OZ2PBT	OZ3PBT	OZ5PBT	OZ10PBT
Safe Working Load (lbs)	1,000 (lbs)	2,000 (lbs)	4,000 (lbs)	6,000 (lbs)	10,000 (lbs)	20,000 (lbs)
Adjustable Flange Width (in)	2.52-5.90 (in)	2.52-8.00 (in)	3.46-8.00 (in)	4.00-8.00 (in)	4.49-8.00 (in)	4.92-8.00 (in)
Dimensional Information (in)	A	10.00 (in)	12.52 (in)	13.19 (in)	14.05 (in)	15.94 (in)
	B	8.50 (in)	10.24 (in)	11.81 (in)	13.58 (in)	15.55 (in)
	C	7.67 (in)	9.41 (in)	11.26 (in)	13.23 (in)	15.47 (in)
	H	4.33 (in)	5.31 (in)	6.34 (in)	7.28 (in)	8.66 (in)
Minimum Radius Curve (ft)	2.95 (ft)	3.28 (ft)	3.60 (ft)	4.26 (ft)	4.59 (ft)	5.57 (ft)
Net Weight (lbs)	20 (lbs)	32 (lbs)	50 (lbs)	82 (lbs)	123 (lbs)	215 (lbs)

GEARED BEAM TROLLEY



*Wheel and Bail dimensions available on our website www.ozliftingproducts.com

FEATURES

- ▶ Lightweight robust construction.
- ▶ Adjustable to most I-Beams (see measurements below).
- ▶ Durable baked enamel paint protection.
- ▶ Gearing provides positive load positioning along the beam.
- ▶ Precision ball bearing trolley wheels.

SPECIFICATIONS (1, 2, 3, 5 and 10 tons)

Product Code	OZ1GBT	OZ2GBT	OZ3GBT	OZ5GBT	OZ10GBT
Safe Working Load (lbs)	2,000 (lbs)	4,000 (lbs)	6,000 (lbs)	10,000 (lbs)	20,000 (lbs)
Adjustable Flange Width (in)	2.52-8.00 (in)	3.46-8.00 (in)	4.01-8.00 (in)	4.49-8.00 (in)	4.92-8.00 (in)
Dimensional Information (in)	A	12.52 (in)	13.19 (in)	14.05 (in)	15.94 (in)
	B	10.24 (in)	11.81 (in)	13.58 (in)	15.55 (in)
	C	9.41 (in)	11.26 (in)	13.23 (in)	15.47 (in)
	H	5.31 (in)	6.34 (in)	7.28 (in)	8.66 (in)
Minimum Radius Curve (ft)	3.28 (ft)	3.60 (ft)	4.26 (ft)	4.59 (ft)	5.57 (ft)
Net Weight (lbs)	44 (lbs)	62 (lbs)	95 (lbs)	136 (lbs)	234.00 (lbs)
* Std. length of hand chain	9 (ft)	9 (ft)	9 (ft)	9 (ft)	9 (ft)

* Longer hand chain lengths available. Please contact the factory.

* Available in 20 and 30 Tons. Please go to www.ozliftingproducts.com for specifications.

* Available in 50 Tons. Please contact factory for specification.



P.O. Box 845 Winona, MN 55987 • Tf: (800) 749-1064
 Ph: (507) 474-6250 | Fx: (507) 452-5217 | Tech Support: (507) 457-3346
sales@ozliftingproducts.com | www.ozliftingproducts.com

**Test Certificate
- Included -**



**Test Certificate
- Included -**



**Test Certificate
- Included -**

**Test Certificate
- Included -**



**AS 1418.2
CE
ISO9001**

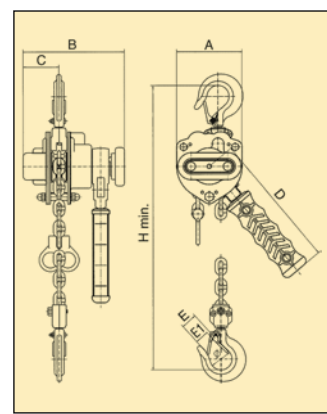
MECHANICAL LEVER HOIST

Capacity: 500 lbs.

Net Weight: 5 lbs.

Features:

- Lightweight robust construction
- Super strength alloy loadchain
- Fully enclosed gear train
- Minimum effort to lift W.L.L.
- Chrome plated covers
- Minimum headroom
- Galvanized load chain
- Spare parts available



Model	OMLB025	
W.L.L.	lbs	500 (lbs)
Lift	ft	5 (ft)
Headroom (hook to hook) H min.	in	8.39 (in)
Effort to lift full load	lbs	28.66 (lbs)
No. of load chain fall line		1
Load chain (dia. x pitch)	mm	Ø4x12 (mm)
Dimensions (in)	A	2.95 (in)
	B	4.52 (in)
	C	1.61 (in)
	D	6.14 (in)
	E	.70 (in)
Net weight	E1	.60 (in)
	lbs	5 (lbs)

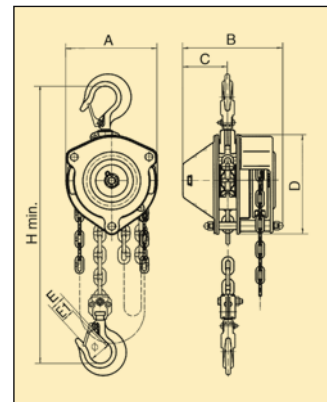
MECHANICAL CHAIN HOIST

Capacity: 500 lbs.

Net Weight: 9 lbs.

Features:

- Lightweight robust construction
- Super strength alloy loadchain
- Fully enclosed gear train
- Minimum effort to lift W.L.L.
- Thrust race in lower hook
- Chrome plated covers
- Minimum headroom
- Galvanized hand and load chain
- Spare parts available



Model	OMCB025	
W.L.L.	lbs	500 (lbs)
Lift	ft	10 (ft)
Headroom (hook to hook) H min.	in	8.98 (in)
Effort to lift full load	lbs	26.45 (lbs)
No. of load chain fall line		1
Load chain (dia. x pitch)	mm	Ø4x12 (mm)
Dimensions (in)	A	3.9 (in)
	B	4.29 (in)
	C	1.89 (in)
	D	4.25 (in)
	E	.70 (in)
Net weight	E1	.60 (in)
	lbs	9 (lbs)



TITAN

ELECTRIC BUILDER'S HOIST

**NEW
PRODUCT
TBH-500**

75 fpm

The Titan Electric Builder's Hoist is designed for commercial building sites, as well as various construction workplaces, such as warehousing, buildings, storage areas, and factories in general.

Features:

Compact and lightweight design which allows easy mounting.

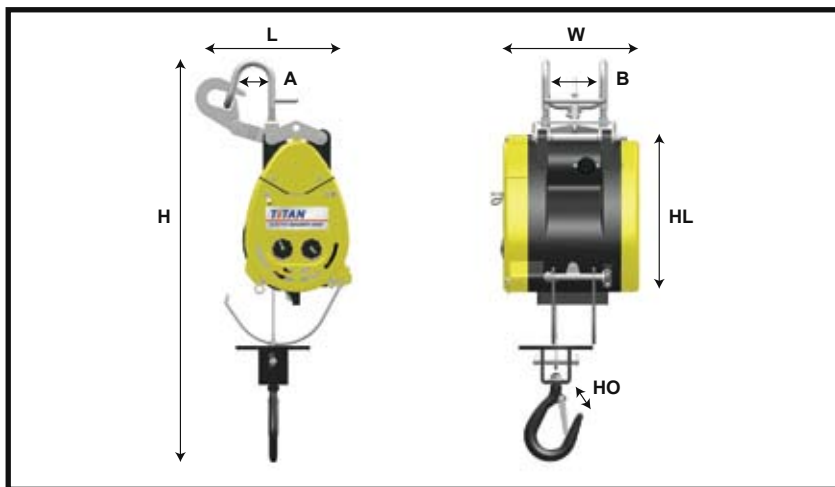
Upper and lower limit switches.

Double safety brake device including an electromagnetic brake for instant braking.

Operates on single phase 115 volt power supply.

Hand held control pendant with safety switch.

Spare parts available.



Model#	TBH-500
Depth (L)	7.04 inches
Width (W)	9.44 inches
Height (H)	25.93 inches
Housing Length (HL)	13 inches
Hanger Opening (A)	2.25 inches
Hanger Width (B)	4.50 inches
Hook Opening (HO)	.88 inches
Capacity	500 pounds
Line Speed	75 fpm
Standard Lift	90 feet
Pendant Length	23 feet
Power Cord Length	16 feet
Rope Size	.1875 inches
Net Weight	48 pounds



Quick release pendant and power cord

**Test Certificate
- Included -**



P.O. Box 845 Winona, MN 55987 • Tf: (800) 749-1064
Ph: (507) 474-6250 | Fx: (507) 452-5217 | Tech Support: (507) 457-3346
sales@ozliftingproducts.com | www.ozliftingproducts.com

Quality, Strength & Durability.



Distributed By:

OZ Lifting Products LLC
P.O. Box 845
Winona, MN 55987
Phone: (800) 749-1064 | (507) 474-6250
Tech Support (507) 457-3346
Fax: (507) 452-5217
sales@ozliftingproducts.com
www.ozliftingproducts.com

Rev. 3/2011