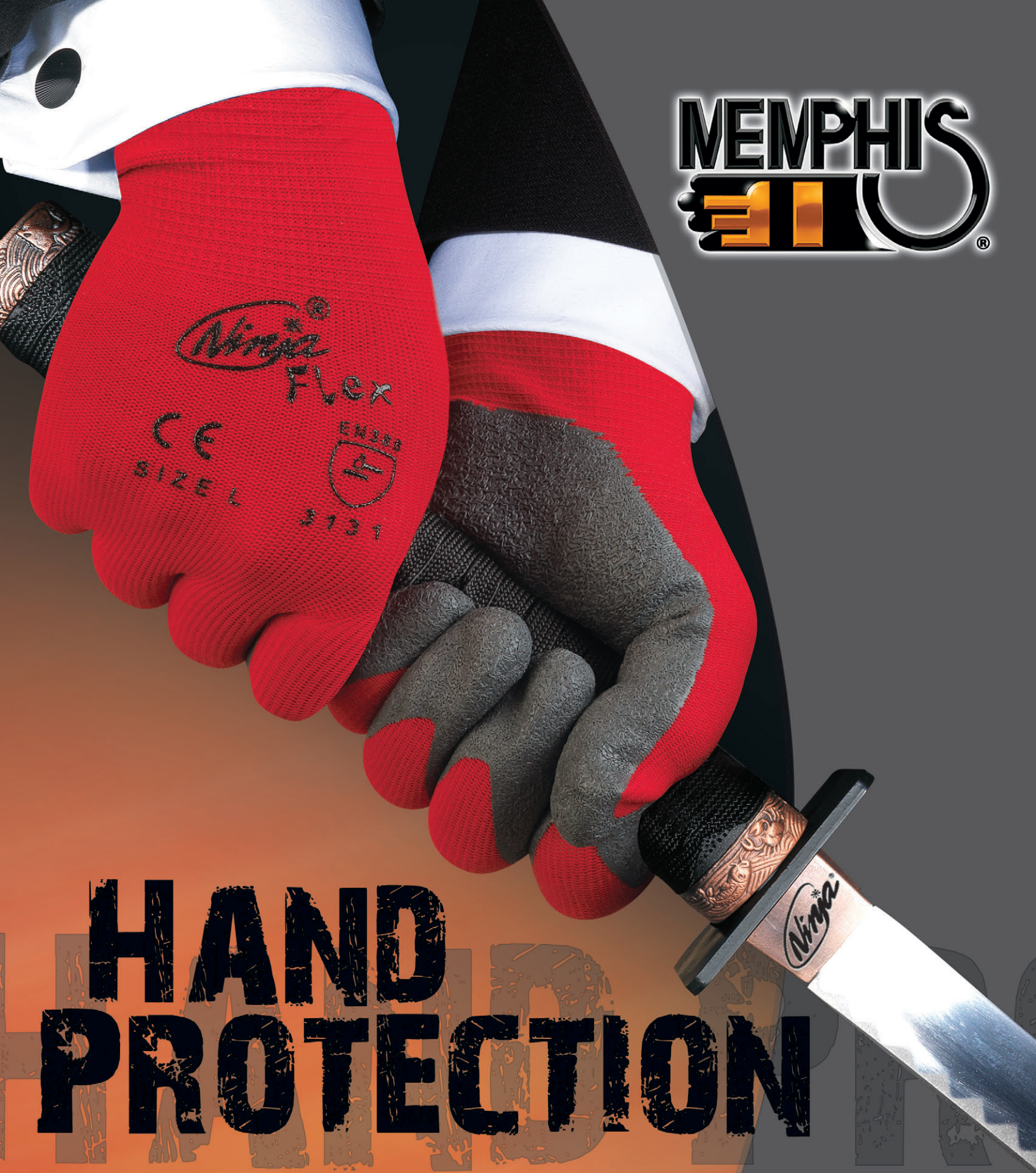


MEMPHIS
FI



HAND PROTECTION

 **MCR**
SAFETY
MEMPHIS GLOVE CREWS RIVER CITY

800-955-6887
www.mcrcsafety.com



N9690TC

Ninja® Therma Force
 Dual shell construction with 13-Gauge Dyneema/Synthetic/Fiberglass and a brushed acrylic interior shell with textured bi-polymer coating on palm and fingertips.
 CE Score 4544
 Sizes: L, M, XL, XXL



N9690HV

Ninja® Ice Hi-Vis
 Dual shell construction with nylon exterior and brushed acrylic interior with proprietary HPT (Hydropellent Technology) over the knuckle.
 CE Score 3232
 Sizes: L, M, XL, XXL



N9690FC

Ninja® Ice Fully Coated
 Dual shell construction with nylon exterior and brushed acrylic interior with fully coated proprietary HPT (Hydropellent Technology).
 CE Score 3232
 Sizes: L, M, XL, XXL



N9680

Ninja® Flex
 15-Gauge nylon shell with textured latex coating on palm and fingertips.
 CE Score 3131
 Sizes L, M, S, XL



N9676G

Ninja® Max
 10-Gauge, Engineered Yarn of Dyneema® and Synthetic Yarn Shell Black Bi-Polymer Coating on Palm and Finger Tips
 CE Score 4542
 Sizes: L, M, S, XL



N9677

Ninja® Force
 13-Gauge Dyneema/Synthetic/Fiber Glass Shell with Polyurethane Coating on Palm and Fingertips
 CE Score 4542
 Sizes: L, M, S, XL



N9696

Ninja® Lite
 Skin Tight Athletic Grade Blue Nylon Shell with Feather-light Polyurethane Coating on Palm and Fingertips
 CE Score 4131
 Sizes: L, M, S, XL



N9699

Ninja® HPT
 15-Gauge Athletic Grade Black Nylon Shell with Proprietary Black HPT™ (Hydropellent Technology™) Coating on Palm and Fingertips
 CE Score 4131
 Sizes: L, M, S, XL



N9674 Ninja® X

15-Gauge nylon/spandex shell with bi-polymer coating on palm and fingertips.
 CE Score 412X
 Sizes: L, M, S, XL

HexArmor®

WITH SuperFabric®



HX9680



HexArmor® Level Six Series
Seamless Knit Shell with an Enhanced Layer of Cut and Puncture Protection on the Palm and Fingers
Sizes: L, M, S, XL



HX7090



HexArmor® TenX™ ThreeSixty Cotton Shell with the Highest Cut and Puncture Resistance with a 360° Coverage on the Hand
Sizes: L, M, XL



HX1711



HexArmor® Big Jake
Heavy Select side leather gunn pattern, enhanced HexArmor palm and back of hand, sewn with KEVLAR®, double leather palm.
Sizes: L, M, S, XL, XXL



HX3201



HexArmor® Memphis Driver
Select cow grain leather, enhanced HexArmor palm and back of hand, straight thumb.
Sizes: L, M, S, XL, XXL



HX3041



HexArmor® Hercules™ NSR
Multiple layers of high performance fabric provide the highest levels of needle stick and sharps protection on the market.
Sizes: L, M, S, XL

Features:

- Highest needlestick (sharps) protection on the market.
- Highest level cut resistance – CPPT Level 5.
- Full protection for the entire hand.
- Specialized gripping surface on palm.
- Pre-curved shape provides maximum comfort.
- Full sock nylon mesh liner.
- Machine washable.

Industry Applications:

Hospital laundry, hospital waste, recycle sorting, waste handling, wastewater/sewage treatment, and animal handling.



HXAS019S

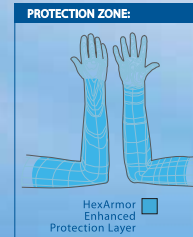
HexArmor® 19" Protective Sleeve
High performance cut resistant fabric provides unparalleled puncture resistance, constant protective coverage and allows user a full range of motion.
Sizes: L, M, S, XL, XXL

Features:

- Highest level cut resistance – CPPT Level 5.
- Superior puncture protection from wires, metal and glass.
- Durable and long lasting.
- Lightweight and cooler than traditional sleeves.
- Ambidextrous, Sold Individually.
- Machine washable.

Industry Applications:

Veneer pulling, glass, metal and wood handling, assembly, food packing/processing, general work, and animal handling



HXAP322



HexArmor® 24"x30" Protective Apron
Heavy duty apron utilizes a double layer of high-performance CPPT Level 5 cut resistant fabric providing unparalleled puncture resistance.

Features:

- Highest level cut resistance – CPPT Level 5.
- Superior puncture protection from wires, metal and glass.
- Offers resistance from abrasion.
- Lightweight and Breathable.
- Durable and long lasting.
- Includes adjustable straps.
- Machine washable.

Industry Applications:

Veneer pulling, glass, metal and wood handling, general work, assembly, food packing/processing, filing/grinding.



HXAG10009S



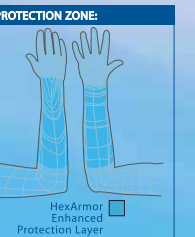
HexArmor® 9" Arm Guard 9S
High performance cut and puncture resistant fabric forearm with spandex wrist and thumb hole.
Sizes: L, M, S, XL, XXL

Features:

- Highest level cut resistance – CPPT Level 5.
- Superior puncture protection from wires, metal and glass.
- Protection stays in place (will not fall down).
- Durable and long lasting.
- Lightweight and cooler than traditional sleeves.
- Ambidextrous, Sold Individually.
- Machine washable.

Industry Applications:

Veneer pulling, glass, metal and wood handling, assembly, food packing/processing, general work, and animal handling



FORCE FLEX



HV100 ForceFlex

Developed with the Oil Industry to achieve maximum protection and Durability in Wet or Oily Conditions. Reinforced fingertips for abrasion, Rough KEVLAR® palm, TPR finger ribs and cage for reduced abrasion and impact, orange mesh breathability, Neoprene cuff w/pull to easy slip on and tight fit. Reflexite® retroreflective material for Hi Visibility. Sizes: L, M, XL, XXL, XXL

HV200 Force Flex

Features: All the features of the HV100 Plus

- Water/Wind resistant breathable bladder
- 3M Thinsulate® insulated lining for warmth
- Inner fleece snow guard inside the cuff traps warmth in cold environments.



ZB100 ForceFlex Zoombang®

Zoombang® technology in the palm provides unparalleled protection from impact and vibration. Injection molded TPR (Thermo Plastic Rubber) padding covers the back of hand and fingers for full dorsal metacarpal protection. Sizes: L, M, XL, XXL



All ForceFlex styles are washable in cold water and air dry.

Y200 ForceFlex

General Purpose ForceFlex Y200 features an ergonomically designed Clarino® synthetic palm pad to increase comfort and durability. Injection molded TPR (Thermo Plastic Rubber) padding covers the back of hand and fingers for full dorsal metacarpal protection. Sizes: L, M, XL, XXL, XXL

Y300 Force Flex

Features: All of the features of the Y200 above, plus a durable neoprene slip-on cuff with dual side flex panels and continuous pull aid ease in donning and doffing.

B100 ForceFlex

Grip in dry applications ForceFlex B100 features an ergonomically designed synthetic rough textured palm pad to enhance grip in dry applications. Injection molded TPR (Thermo Plastic Rubber) padding covers the back of hand and fingers for full dorsal metacarpal protection. Sizes: L, M, XL, XXL



FASGUARD™



900

Parity by Clarino® Synthetic Leather Palm and Fingers Blue Spandex Back
Sizes: L, M, XL, XXL

904

100 gram Thinsulate® Full Sock Lining Synthetic Leather Palm and Fingers Multi-layered Knuckle Protection Including Gel and Foam Pads
Sizes: L, M, S, XL



903

Heavy Gel Palm Pad Grain Goatskin Leather Palm and Fingertips
Sizes: L, M, S, XL



902

3 Fingerless Synthetic Leather Design Gray "G" Shape Palm Patch Gel palm pads
Sizes: L, M, S, XL

905

Synthetic Leather Palm and Fingers
Sizes: L, M, S, XL, XXL



906

Grain Goatskin with Double Palm Patch and Fingertips Black Spandex Back
Sizes: L, M, S, XL

901

Premium Grain Deerskin Palm and Fingers
Sizes: L, M, S, XL, XXL

Visit mcrsafety.com for our complete Fasguard assortment.



907

Synthetic Leather Palm, **silicone spider web grip on palm and fingers**, high quality star fabric back, neoprene knuckle strap, micro-terrycloth perspiration pad on wing thumb, adjustable wrist closure and continuous pull strap to aid donning. Sizes: L, M, S, XL



920

Economy Leather Palm, fingertips, and back of index finger, spandex back, micro-terrycloth perspiration pad on straight thumb, and shirred elastic wrist with adjustable closure. Sizes: L, M, S, XL



924

Black Synthetic Leather Palm, micro-textured polymer on fingertips, reinforced, foam padded palm, wing thumb with perspiration pad, adjustable wrist closure, **LED lights with four attachment points**. Sizes: L, M, S, XL, XXL



925

Black Split Deerskin back with black grain cow palm, patches, cuff, knuckle, and fingertips, fourchettes sewn with Kevlar.® This all leather style is excellent for Mig/Tig and light welding applications. Sizes: L, M, S, XL, XXL



922

Synthetic leather palm, fingertips, and thumb crotch, **high visibility star fabric back**, neoprene knuckle strap, wing thumb, and 360° elastic stitching on slip-on cuff. Sizes: L, M, S, XL



923

Synthetic Leather Palm, fingertips, thumb crotch, and back of index finger, **high visibility star fabric back**, wing thumb, and adjustable wrist closure with Memphis Glove logo. Sizes: L, M, S, XL



926

Black Synthetic Leather Palm with PVC dots. Black terrycloth thumb. Adjustable wrist closure with Memphis Multi-Task logo, hi-vis green fabric back on neoprene wrist. Black synthetic finger tips and reinforced thumb crotch. **Waterproof/windproof full sock membrane and full sock 3M 40-gram Thinsulate lining**. Sizes: L, M, S, XL, XXL



940

Mining/Heavy Duty multitask, **Grain Pigskin, Split Pigskin Double Palm**, Foam Padding on back of hand, Fingers and Wing Thumb, Full Sock Fleece Lining. Sizes: L, M, S, XL, XXL



9680 FLEX TUFF®

Textured Latex Palm & Fingertips Dipped
10-Gauge Cotton/Polyester Shell
CE Score 3143
Sizes: L, M, S, XL



9687 FLEX TUFF® KEVLAR®

Textured Blue Latex Palm & Fingertips Dipped
10-Gauge KEVLAR® Shell
CE Score 3443
Sizes: L, M, S, XL, XXL



9690 FLEX THERM™

Textured Latex Palm & Fingertips Dipped
10-Gauge Acrylic/Cotton/Polyester Shell
CE Score 2241
Sizes: L, M, S, XL



9690Y FLEX THERM™ HI-VIS

Textured Latex Palm & Fingertips Dipped
Fully Dipped Thumb
7-Gauge Acrylic Shell
Sizes: L, M, S, XL



FT300 FLEX TUFF®

Textured Blue Latex Palm & Fingertips Dipped
10-Gauge Cotton/Polyester Shell
Maximum Flexibility
CE Score 3143
Sizes: L, M, S, XL



FG305 FLEX TUFF®

Textured Blue Latex over the
Knuckle, Latex Palm & Finger Tips Dipped
10-Gauge Cotton/Polyester Shell
Sizes: L, M, S, XL



FT330 FLEX TUFF®

Double Thumb Crotch, Latex Palm & Finger Tips
10-Gauge Cotton/Polyester Shell
Sizes: L, M, S, XL



FTKV350 FLEX TUFF®

Green Nitrile Palm & Fingertips Dipped
10-Gauge KEVLAR® Shell
CE Score 4443
Sizes: L, M, S, XL
FT350 10-Gauge Cotton/Polyester Shell
Size: L, M, S, XL



96731HV MEMPHIS FLEX™

Foam Latex Palm & Fingers Dip
Stretch Nylon Shell
13-Gauge Shell
CE Score 3131
Sizes: L, M, S, XL



96731G MEMPHIS GREEN BAMBOO

Foam Latex Palm & Fingers Dip
13-Gauge Bamboo Fabric Shell
CE Score 3131
Sizes: L, M, S, XL



9683 ULTRA TECH®

Nitrile Palm & Fingers Dip
15-Gauge Nylon Shell
CE Score 4121
Features Excellent Abrasion & Dry Grip.
9683 Sizes: L, M, S, XS, XL
9679 Economy Nitrile, 13-Gauge
Sizes: L, M, S, XS, XL



9699 ULTRA TECH® HPT With Hydropellent Technology™

15-Gauge Nylon Shell
CE Score 4131
Sizes: L, M, S, XS, XL, XXL

Hydropellent Technology™ process creates a soft, flexible, durable coating that repels liquids and provides a firm wet grip. Hydropellent Technology™ is a trademark of Midas Safety.



96731 MEMPHIS FLEX™

Foam Latex Palm & Fingertips Dipped
13-Gauge Nylon/Polyester Shell
CE Score 3131
Sizes: L, M, S, XL



9666

Value Series PU
Gray Polyurethane Palm & Fingertips Dipped
13-Gauge Gray Nylon Shell
CE Score 2121
Sizes: L, M, S, XS, XL
9665 White/White
9669 Black/Black



9673SF

Foam Nitrile, Sandy Finish
13-Gauge Nylon Shell
CE Score 4121
Sizes: L, M, S, XS, XL, XXL



9696 ULTRA TECH® PU (Polyurethane)

13-Gauge Nylon Shell
Features Extra Dexterity and Sense of Touch.
CE Score 4131
Sizes: L, M, S, XS, XL, XXL
9695 White



9698 ULTRA TECH® TEXTURED LATEX

13-Gauge Stretch Nylon Shell
CE Score 2131
Features Excellent Grip, Especially for Glass.
Sizes: L, M, S, XL

CUT RESISTANT



WITH
Dyneema®

CPPT
2

9672
MEMPHIS™ DYNEEMA® PU
PU (Polyurethane)
13-Gauge DYNEEMA® Shell
CE Score 4341
Sizes: L, M, S, XS, XL, XXL



WITH
Dyneema®

CPPT
3

N9676G
Ninja® Max
10-Gauge, Engineered Yarn of
Dyneema® and Synthetic Yarn Shell
Black Bi-Polymer Coating on Palm and
Fingertips
CE Score 4542
Sizes: L, M, S, XL



WITH
Dyneema®

CPPT
3

9676 ULTRA TECH®
DYNEEMA® PU (Polyurethane)
13-Gauge Dyneema Shell
CE Score 4343
Features Excellent Abrasion
Protection.
Sizes: L, M, S, XS, XL, XXL
9677 White



9677



CPPT
5

9350 STEELCORE II
Steelcore® II
7-Gauge
9350 Regular Weight
Sizes: L, M, S, XS, XL
Steelcore® II
10-Gauge
9356 Medium Weight
Sizes: L, M, S, XS, XL



CPPT
4

9683CS
Ultra Tech Cut/Splash
10-Gauge Synthetic/Fiberglass
shell with Full Nitrile NFT Coating
CE Score 4442
Sizes: L, M, S, XL, XXL



CPPT
5

9381 STEELCORE II
Steelcore® II
7-Gauge
9381 PVC Blocks One Side
Sizes: L, M, S, XL
Specify Right or Left Hand
9382 PVC Blocks Two Sides
Sizes: L, M, S, XS, XL



WITH
Dyneema®

CPPT
3

N9690TC
Ninja® Therma Force
Coating Bi-Polymer on Palm and Fingertips
CE Score 4544
Sizes: L, M, XL, XXL



9318D7T

CPPT
2

Dyneema Sleeves
Available in 7-Gauge or 10-Gauge and
with Thumb Hole or Plain, These Sleeves
Feature a CE Cut Score of 3 and CPPT
Score of 2.
9318D7 7-Gauge, Plain
9318D7T 7-Gauge, Thumb Slot
9318D10 10-Gauge, Plain
9318D10T 10-Gauge, Thumb Slot

9318D10



CPPT
3

N9677
Ninja® Force
13-Gauge Dyneema/Synthetic/Fiber
Glass Shell with Polyurethane Coating
on Palm and Fingertips
CE Score 4542
Sizes: L, M, S, XL

WITH
Dyneema®



CPPT
5

9312 STEELCORE II
Steelcore® II Sleeves
7-Gauge
9312 12" Sleeve
9318 18" Sleeve
9321 21" Sleeve



CPPT
5

9345 SURVIVOR
Survivor™
7-Gauge, Uncoated
9345 Sizes: L, M, S, XS, XL
9349 Fingerless
Sizes: L, M, S, XS, XL
10-Gauge
9346 Sizes: L, M, S
13-Gauge
9348 Sizes: L, M, S, XS, XL



All Survivor and
Steelcore II are
Launderable.



CPPT
4

9389
KS-5™ KEVLAR® - STEEL
13-Gauge Kevlar®/Stainless
Steel/Nylon Shell
Black Latex Palm & Fingertips Dipped
CE Score 2542
Sizes: L, M, S, XL, XXL
9399 KEVLAR® Armor Tech
7-Gauge Kevlar®/Stainless
Steel Shell, Reinforced Thumb
Crotch
Sizes: L, S



9686
Grip Sharp™ KEVLAR® Brand Fiber
7-Gauge
Select Split Shoulder Leather Palm
CE Score 4344
Reinforced Thumb Crotch

CPPT 3
9686 Sizes: L, M, S, XL, XXL
9380 KEVLAR®/Cotton Plated
Shell w/ Leather Palm
Sizes: L, M, S, XL



Thumb Slot
9378T / 9378TE

9374TL Sleeve

KEVLAR® Brand Fiber
Double Ply CPPT 3 -All Sleeves
14" Sleeve
Also Available in

8" Through 22" Lengths

9378 18", Plain Sleeves

9378E 18", Plain Sleeves,
Economy

9378T 18", Thumb Slot

9378TE 18", Thumb Slot,
Economy

9378B 18", Bar Tack

9374TL 14", Thumb Slot
w/ Leather Pad

9378BE 18", Bar Tack, Economy

9378KC 18", Kevlar (exterior)
Cotton (interior)

9178T 18", Black Kevlar Sleeve,
Thumb Slot



CPPT 3

9370H

KEVLAR®
Regular Weight
PVC Honeygrip® Coated on Two Sides
7-Gauge
Sizes: L, M, S

KEVLAR® is a registered trademark of
El DuPont de Nemours and Company



9693

ULTRA TECH® NITRILE KV
13-Gauge Stretch Kevlar® Shell
Light Foam Nitrile Coating
Softer and More Flexible Coating
Actifresh® Anti-bacterial Agent
CE Score 3221
Sizes: L, M, S, XL, XXL, XS

CPPT 2



CPPT 3

9366

KEVLAR® Brand Fiber
Dotted, Regular Weight, 7-Gauge

9365 PVC Dots One-Side,
Sizes: L, M, S, XL

9366 PVC Dots Two-Sides
Sizes: L, M, S, XS, XL

9369 Fingerless,
PVC Dots Two-Sides
Sizes: L, M, S, XL

Economy Weight

9366E PVC Dots Two-Sides,
Sizes: L, S

9392 PVC Dots Two-Sides
10-Gauge
Sizes: L, S

9396 PVC Dots Two-Sides
13-Gauge
Sizes: L, S

Heavy Weight

9376 PVC Dots Two-sides
Sizes: L, M, S, XS, XL



8100C

Clute Pattern
8 oz. Cotton Canvas
Knit Wrist

Straight Thumb

8100C Deluxe, Size: L

8100 White, Size: L

8102 White, Size: S

8100P Tan, Size: L

Wing Thumb

8100A Cotton Blend
Knit Wrist

8100B 2 1/2" Band Top

8100W Knit Wrist
Size: L

Reversible Pattern

8100R Knit Wrist
Size: L

Clute Pattern
Industry Medium Weight
10 oz. Cotton Canvas

Straight Thumb

8200 Knit Wrist

8200B 2 1/2" Band Top

8200G 4 1/2" Gauntlet Cuff

Wing Thumb

8200A Cotton Blend
Knit Wrist

8200CD Corded, Knit Wrist
Size: L

8200CDXL Corded, Knit Wrist
Size: XL



8808 G,O,Y

Dotted Cotton Canvas
Knit Wrist, Clute Pattern
Straight Thumb

8 oz. Regular Weight

8808G Green

8808O Orange

8808Y Yellow

Size: L

Chore Canvas Back

Regular Weight

8516 Knit Wrist

Full Chore Style

Quilted Palm & Back

Knit Wrist

8526C Heavy Weight



7800

Brown Jersey with Plastic Dots
Clute Pattern

7800 Size: L

Brown Jersey, Knit Wrist

Clute Pattern

7100 Size: L

Reversible Jersey, Knit Wrist

Straight Thumb

7100RI Brown, Size: L



9124

Hot Mill
Knuckle Strap

Regular Weight

9124KI 2 1/2" Band Top, Nap-in

9124K 2 1/2" Band Top

9124G 4 1/2" Gauntlet Cuff

9124C 2 1/2" Band Top

100% Cotton Liner

Economy Weight

100% Cotton

9124 2 1/2" Band Top

Heavy Weight

100% Cotton

9128 28 oz. 2 1/2" Band Top

9132 32 oz.
2 1/2" Band Top



9429

Protects to 250°F

Gunn Pattern

Knit Wrist, Black Stripe

Heavy Weight (28 oz.), Seamless Loop-out
Manufacturing Facility ISO9002 certified

Size: L

9433 Extra Heavy Weight (32 oz.)

Manufacturing Facility
ISO9002 certified

Size: L

Knit Wrist

Reversible/Seamless Pattern

Standard Weight

9400KM Size: L

Standard Weight, Gray

9420KM Size: L



9638LM

Cotton/Polyester Blend
7-Gauge Regular Weight
 Natural, Hemmed
 Sizes: L, M, S, XL

9509LM Fingerless, Cotton/Polyester
 9617LM 100% Orange Acrylic



9506LB

100% Cotton, 7-Gauge
 9506LB Natural, Heavy Weight,
 Hemmed
 Sizes: L, S

9611LM 10-Gauge Grey
 Cotton/Polyester
 9613LM 13-Gauge
 Natural, Cotton



Honey Grip

9675LM

Cotton/Polyester Honey Grip®
 9675L Acrylic/Polyester
 Sizes: L, M, S, XL

9675LM Cotton/Polyester
 Heavy Weight
 Sizes: L, M, S, XL
 9676LM Cotton/Polyester - gray
 Sizes: L, M, XL
 9677LM Fingerless - gray
 Sizes: L, M, XL



9660LM

Cotton/Polyester Blend
Two-Sided PVC Dots
Regular Weight
 7-Gauge

9660L White, Hemmed,
 Sizes: L, M, S
 9660LM Natural,
 Sizes: L, S, XS, XL
 9660LW Natural, White Dots*
 Sizes: L
 9662LM Gray,
 Sizes: L, S
 9663LM Multi-Color Assorted
 Blend
 Sizes: L, S
 9508LM Natural,
 Fingerless
 Sizes: L, S
 9667L Natural, Hemmed,
 Sizes: L, S

Economy Weight

9667LM Natural,
 Sizes: L, S

9668L Natural, Hemmed,
 Sizes: L, S

One-Sided PVC Dots
Regular Weight

9506LD1 100% Cotton, Natural,
 Hemmed,
 Sizes: L, S
 9650L White, Hemmed,
 Sizes: L, S
 9650LM Natural,
 Sizes: L, S, XS
 9657L Natural, Hemmed,
 Sizes: L, S
 9650LW Natural, White Dots,*
 Sizes: L, S

Economy Weight

9657LM Natural, Hemmed,
 Sizes: L, S
 9658L Natural, Hemmed,
 Sizes: L, S

* Component materials comply with
 FDA regulations for food contact.



9620

One Size Fits All
100% Thermastat™
10-Gauge
 9620 White
 9622 Blue



9514G

7-Gauge, Pastel Green shell
 Sizes: L, M, S
 9512G Uncoated
 9514G PVC Dots 2-sided
 9514GH Honeycomb pattern

9614PH

13-Gauge, Powder Pink shell
 Sizes: XS, S, M
 9612P Uncoated
 9614P 2-sided
 9614PH Honeycomb pattern



9662, 9663

100% Acrylic
Two-Sided PVC Dots
Regular Weight
 7-Gauge

9662 Hi-Vis Yellow
 Sizes: L, S
 9663 Hi-Vis Orange
 Sizes: L, S

100% Acrylic

9617LM Orange
 Sizes: L

Hem Color Guide



Black - XS

Yellow- S

Blue - M

White - Large

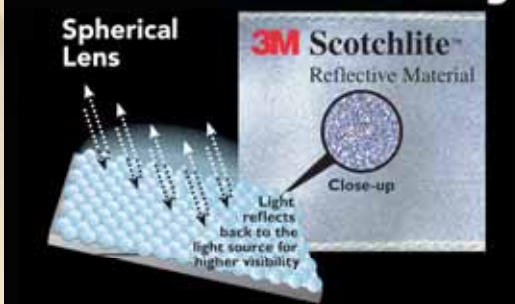
Green - XL

LUMINATOR™



ANSI/ISER
107-2004
Level II compliance
Retroreflectivity

Retroreflectivity



ANSI/ISER
107-2004
Level II compliance
Retroreflectivity

968 LUMINATOR™

Premium Grade Grain Goatskin
Keystone Thumb
3M Scotchlite™ Reflective Material on Knuckle, Wrist and 3 Fingertips
Lime Fluorescent Polyester (back)
Thinsulate® Full Sock Lining
Adjustable Wrist Closure
Sizes: L, M, S, XL



All Thinsulate® is C100,
which equals 100 gram weight



ANSI/ISER
107-2004
Level II compliance
Retroreflectivity

921 LUMINATOR™

Premium Grade Grain Cow
3M Scotchlite™ Reflective Material on Knuckle, Wrist and 3 Fingertips
Micro Absorbent Terry Fabric and Double Pad on Wing Thumb
Orange Fluorescent Polyester (back)
Unlined
Adjustable Wrist Closure
Sizes: L, M, S, XL

911DP Premium Side Split Cow
Double Leather Palm
Micro Absorbent Terry Fabric on Wing Thumb
Sizes: L, M, S, XL



ANSI/ISER
107-2004
Level II compliance
Retroreflectivity

1440 LUMINATOR™

Select Split Cow Leather Palm
3M Scotchlite™ Reflective Material on Cuff and Knuckle
Orange Fluorescent Polyester (back)
2 1/2" Rubberized Safety Cuff
Size: L

19251 LUMINATOR™

Premium Grade Grain Pigskin
Gunn Pattern/Wing Thumb,
3M Scotchlite™ Reflective Material
Orange Fluorescent Polyester (back)
2 1/2" Rubberized Safety Cuff
19261 Thermo Sock® Full Sock Lining
19251 Fleece Cotton Palm Lining "Only"
Sizes: L, M, S, XL

INSULATED LEATHER



1925WL

Premium Grain Pigskin
2 1/2" Safety Cuff
Wool Lined Full Sock Lining
Sizes: L, M, S, XL



1955

Premium Split Pigskin
Thermo Sock® Full Sock Lining
1955 2 1/2" Safety Cuff
1956 Knit Wrist
Sizes: L, M, S, XL



1965

Grain Pigskin
Thinsulate® Full Sock Lining
1965 2 1/2" Safety Cuff
Sizes: L, M, XL

1966 Knit Wrist
Size: L

1320 "B" Select Shoulder
Thinsulate® Lined
Full Sock Lining
2 1/2" Rubberized Safety Cuff
Size: L

1450 "A" Select Shoulder
Foam Insulated
Full Feature Gunn Pattern
Full Sock Lining
2 1/2" Safety Cuff
Size: L

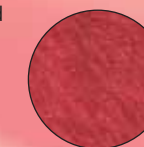


All Thinsulate® is C100,
which equals 100 gram weight



1205L

"C" Shoulder
Full Feature Gunn Pattern
Full Sock Lining
2 1/2" Rubberized Safety Cuff
Red Fleece Lined
Size: L





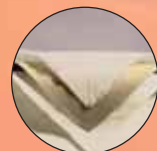
1700

Full Feature Gunn
Pattern Leather Palm
Sewn with KEVLAR®

1700 2 3/4" Safety Cuff
Sizes: L, M, S, XL

1710 4 1/2" Gauntlet Cuff
Sizes: L, M, XL

1730 4 1/2" Duck Gauntlet Cuff
Sizes: L, XL

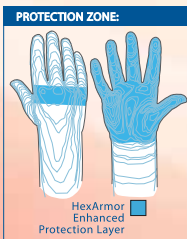


The Rubberized Safety and Gauntlet Cuffs come standard on all styles except the 1730 Duck Cuff which is great for laundering.



HX1711

HexArmor Big Jake
Heavy Select side leather gunn pattern, enhanced HexArmor palm and back of hand, sewn with Kevlar, double leather palm.
Sizes: L, M, S, XL, XXL



1400A

"A" Select Shoulder
Full Feature Gunn, P.E. Cuff

1400A 2 1/2" Safety Cuff
Sizes: L, M, S, XL, XXL
Available in LH and RH only in size Large

1400K KEVLAR® String Knit Liner
Sizes: L, M, S, XL



1200

"C" Shoulder Industry Grade
Full Feature Gunn Pattern,
Red Gray Stripe Fabric Back
Rubberized Cuff
2 1/2" Safety Cuff
Sizes: L, XL, XXL



1680

Full Feature Gunn Rubberized Cuff

1680 Select "A" Side Split
2 1/2" Safety Cuff

Size: L

1690 Select "A" Side Split
4 1/2" Gauntlet Cuff

Size: L

16810 "B" Shoulder Leather
Heavy Yellow Fabric
2 1/2" Safety Cuff

Size: L

16811 "B" Shoulder Leather
Heavy Yellow Fabric
4 1/2" Gauntlet Cuff

Size: L



1900

Select "A" Side

Full Feature Gunn Rubberized Cuff

1900 2 3/4" Safety Cuff
Sizes: L, M, S, XL

1910 4 1/2" Gauntlet Cuff
Size: L

1911 Double Leather Palm
2 3/4" Safety Cuff
Size: L



1935

Premium Grain Cow

Full Feature Gunn Pattern, Rubberized Cuff

1935 Premium 2 1/2" Safety Cuff
Sizes: L, M, S, XL

1936 Premium 4 1/2" Gauntlet Cuff
Sizes: L, M, XL

1932 Select Grade Grain
2 1/2" Safety Cuff

Sizes: L, M, S, XL

1933 Select Grade Grain
4 1/2" Gauntlet Cuff

Size: L

1930 Industry Grade Grain*
2 1/2" Safety Cuff

Sizes: L, M, S, XL

1931 Economy Patch Palm Grain Cow*
2 1/2" Safety Cuff

Size: L



1940

Premium Grain Goatskin
2 1/2" Rubberized Safety Cuff
Size: L



DRIVERS



3200

Premium Grade, Shirred Elastic Back
Rolled Leather Hem
Keystone Thumb

- 3200 Premium Grade
Sizes: L, M, S, XL
- 3211 Select Grade, Cotton Hem
Sizes: L, M, S, XS, XL, XXL, XXXL
- 3213 Industry Grade*, Cotton Hem
Sizes: L, M, S, XL, XXL
- 3215 Economy Grade*, Cotton Hem
Sizes: L, M, S, XL



3213CHVSP

Industrial Grade, Cow Grain Driver, Shirred Elastic Back,
Keystone Thumb, High Visibility Orange Fingertips and
Thumb. Sizes: L, M, S, XL, XXL



3250

Premium Grade Grain Cow
Straight Thumb

- 3250 Red Fleece Lined
Sizes: L, M, S, XL

Industry Grade Grain Cow

Keystone Thumb

- 3280 Thermal Cotton Lined
Sizes: L, M, S, XL, XXL



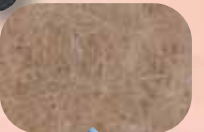
INSULATED DRIVERS



ANSI/ISEA
107-2004
Level II compliance
Retroreflectivity

34411 LUMINATOR™

Premium Grade Grain Pigskin
Waterproof Barrier
Wing Thumb
3M Scotchlite™ Reflective Material
Orange Fluorescent Polyester (back)
Bright Orange 2 1/2" Knit Wrist, Pull Strap
Thermo Sock® Full Sock Lining
Size: L, M, S, XL



3601

Premium Grain Goatskin
Unlined, Cotton Hem
Shirred Elastic Back

- 3601 Straight Thumb
Sizes: L, M, S, XL, XXL, XXXL
- 3601K Kevlar String Knit Liner
Sizes: L, M, S, XL, XXL



3204

Cow Grain With Split Leather Back
Unlined, Shirred Elastic Back
Keystone Thumb

- 3204 Select Grade, Rolled Leather Hem,
Sewn with KEVLAR®
Sizes: L, M, S, XL, XXL, XS
- 3205 Industry Grade*
Sizes: L, M, S, XL
- 3204K KEVLAR® String Knit Liner
Sizes: L, M, S, XL



3480

Premium Grain Pig Palm
Polar Fleece Back

Thermo Sock® Lining
Wing Thumb

- Sizes: L, M, S, XL



3170

Premium Grade Split Cow

- 3170 Pile Lined
Keystone Thumb
Sizes: L, M, S, XL, XXL
- 3150 Red Fleece Lined
Straight Thumb
Sizes: L, M, S, XL, XXL



DEERSKIN/PIGSKIN DRIVERS



3500

Grain Deerskin
Unlined, Rolled Leather Hem
Shirred Elastic Back

Keystone Thumb

3500 Premium Grade
Sizes: L, M, S, XL

3501 Regular Grade
Sizes: L, M, S, XL



DRIVERS SIZE GUIDE	
○ WHITE (SIZE 6) XS
● RED (SIZE 7) S
● GREEN (SIZE 8) M
● BROWN (SIZE 9) L
● BLUE (SIZE 10) XL
● YELLOW (SIZE 11) XXL
● BLACK (SIZE 12) XXXL

HEM COLOR BY SIZE



3420

Premium Grain Pigskin,
Unlined, Rolled Leather Hem
Shirred Elastic Back
Keystone Thumb

Size: L, M, S, XL

3450 Red Fleece Lined



3505

Grain Deerskin
Unlined, Rolled Leather Hem
Shirred Elastic Back

Keystone Thumb

3505 Regular Grade
Split Back/Grain Palm
Sizes: L, M, S, XL, XS, XXL



3405

Select Grain Pigskin Palm/Split Back
Unlined, Cotton Hem
Shirred Elastic Back

Keystone Thumb
Sizes: L, M, S, XL



3720

Synthetic Grain Pigskin Texture,
Shirred Elastic Back
Unlined, Cotton Hem
Keystone Thumb

Size: L, M, S, XL



3750

Synthetic Split Grain Cow Texture,
Insulated - 8 oz. Red Fleece Lining,
Shirred Elastic Back
Cotton Hem

Keystone Thumb
Size: L, M, S, XL



FEATURES

Synthetic Leather Drivers

- Consistent quality and appearance
- Stable material cost and sourcing
- Textured appearance resembles traditional leathers
- Breathable synthetic material and light weight
- Soft fabric with enhanced dexterity
- Launderable



3711

Synthetic Grain Pigskin Texture,
Shirred Elastic Back
Unlined, Cotton Hem
Keystone Thumb

Size: L, M, S, XL



3730DP

Synthetic Split Grain Cow Texture,
Double Palm,
Shirred Elastic Back
Unlined, Cotton Hem
Wing Thumb

Size: L, M, S, XL

FEATURES

Deerskin Drivers

- Naturally Soft
- Excellent for sense of touch
- All day comfort with less hand fatigue

FEATURES

Pig Leather Drivers

- Useful in wet applications, due to pigskin's ability to remain soft after being exposed to moisture or water. Hair follicles allow the leather to breath.

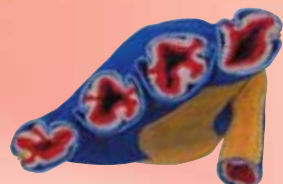
WELDERS



4600

Blue Beast®
Premium Select Side Leather
Reinforced Palm
4600LH Left Hand Only
Wing Thumb
Size: XL
4605 Unlined Gunn Pattern
Straight Thumb
Size: L

Sewn with KEVLAR®
Foam/Red Jersey Lining
4500 Select Shoulder Blue Leather
Double Reinforced Palm Pad
Sewn with KEVLAR®
Size: L
4501 Regular Shoulder Blue Leather
Double Reinforced Palm Pad
Sewn with KEVLAR®
Size: L



Cutaway view of heavy-duty
Full-sock Foam and Red Jersey Lining.

4720

Red Ram®
Premium Select Side Leather
Wing Thumb
Size: XL
Black Cotton Drill Cuff Lining
4300 Select Shoulder
Size: L
4300B Economy Shoulder
Size: L



4700

Mustang™
Premium Select Side Leather
Wing Thumb
Size: XL
Gunn Pattern, Wing Thumb
Black Cotton Drill Cuff Lining
4150 Select Shoulder Leather
4150LH Left Hand Only
4152 Ladies' Economy Shoulder Leather
4150B Economy Shoulder Leather
4155 Regular Shoulder Leather
Size: L



4620

Kodiak®
Premium Select Side Leather
Reinforced Palm
Wing Thumb
Size: XL



4950

Mustang™
Premium Grain Cow Palm & Back
Wing Thumb
4 1/2" Gauntlet Split Cow Cuff
Sewn with Kevlar®
Sizes: L, M, XL, S

4952 Select Grade, Sewn with Kevlar®
Sizes: L, M, S, XL
4940 Premium Grain Cow
Reinforced Straight Thumb
5" Bell Gauntlet Split Cow Cuff
Sewn with Kevlar®
Sizes: L, M, S, XL
4950LB Select Grade, (Not sewn with Kevlar®)
Sizes: L, M, XL



925

Memphis Multitask
Premium Grain Cow & Split Deerskin
Wing Thumb
Adjustable Wrist Closure
Sewn with KEVLAR®
Sizes: L, M, XL, XXL.

MIG/TIG

FEATURES

Mig/Tig Welders

- Premium grade leather
- Split leather gauntlet cuff
- Enhanced dexterity
- Softness for less hand fatigue
- Sewn with super-strong heat resistant DuPont™ KEVLAR® thread
- All styles generously cut
- Private label imprint program



4850

Gloves For Glory™
Premium Grade Grain Goatskin
Gunn Pattern
Wing Thumb
4 1/2" Split Cow Gauntlet Cuff
Sizes: L, M, XL



4900

Red Ram™
Premium Grade Grain Goatskin
Straight Thumb
Sizes: 7, 8, 9, 10, 11, 12
4900 Clute Pattern
2 1/2" Grain Goat Band Cuff
4800 Bundler's Glove
Fingerless with Finger Tabs for Easy Removal
Band Top Cuff

MEMPHIS WELDING APPAREL



38030MW

Leather Jacket
Riveted in all major stress points. All button snaps black anodized to prevent arc flashback. Leather reinforced snaps on buttons. Soapstone pocket on each sleeve. Take up snaps for waist and adjustable snaps at wrist for perfect fit.
38030MW 30" Length
Sizes: L, M, XL, XXL, XXXL



38100MW & 38120MW

Leather Cape with Snap-on Bib
Riveted in all major stress points. All button snaps black anodized to prevent arc flashback. Leather reinforced snaps on buttons. Soapstone pocket on each sleeve. Adjustable snaps at wrist.
38100MW Leather Cape
Sizes: L, M, XL, XXL, XXXL
38114MW 14" Length Snap-on Bib
38120MW 20" Length Snap-on Bib



38418MW

38418MW
Leather Sleeve
18" Length
Protects above elbow down to wrist. Adjustable take up snaps at both ends of sleeve for snug fit.

Leather Sleeve with Support Strap
Leather protects top of shoulder down to wrist. Adjustable wrist snaps for snug fit. Support sling has adjustable strap with quick release buckle.
38423MW 23" Length
38425MW 25" Length

38242MW

Leather Split Leg Bib Apron
Riveted in all major stress points. Large front chest pocket. "D" Ring to hold accessories. Crossed back straps with quick release buckle. Quick side release buckles down the legs.
38236MW 24" x 36"
38242MW 24" x 42"

38142MW

Leather Bib Apron
Riveted in all major stress points. Large front chest pocket. "D" Ring to hold accessories. Crossed back straps with quick release buckle.
38142MW 24" x 42"
38130MW 24" x 30"
38136MW 24" x 36"
Leather Waist Apron
Heavy duty adjustable waist strap with quick release buckle.
38318MW 24" x 18"
38324MW 24" x 24"



38525MW

Leather Rod Holder
Reinforced Bottom
Spring Clip



38600MW

38" Chaps



38505MW

Leather Shoe Protector
Adjustable
Sizes: One size fits all

LIMITED FLAMMABILITY GARMENT



39100

L/F Cotton Cape Sleeve with Bib
Anodized button snap closures and open back. Provides increased ventilation while protecting front of body, arms and shoulder.

39100 Cape
Sizes: L, M, S, XL, XXL, XXXL
39114 22" x 14" Bib
39120 22" x 20" Bib



39030

L/F Cotton Jacket
Anodized snap button front. Snap sleeves for snug fit. Large inside pocket. Soapstone shoulder pocket.
39030 30" L, M, S, XL, XXL, XXXL
39045 45" L, XL



39136

L/F Cotton Bib Apron
Shoulder and waist adjustable straps.
39136 24" x 36"
39142 24" x 42"



39836

Denim Apron with 2 Pockets
36" Length
39818 18" Denim Sleeve
Denim not L/F treated

39518

L/F Cotton 18" Sleeve with Snap Wrist
Elastic at top and anodized button snap at wrist.
39523 23" Length



1545

L/F Leather Palm Cotton Back Glove
2 1/2" Safety Cuff.
Size: L



39418

L/F Cotton Sleeve
2 1/4" heavy duty elastic at top and wrist.
39418 18" Sleeve
39423 23" Sleeve

FEATURES

- L/F Cotton Welding Apparel**
- USA treated flame resistant cotton fabric
 - 100% 9 oz. cotton specially treated to be flame resistant
 - Provides economic protection from sudden flame exposure, sparks and light molten splash
 - Anodized button snap closures
 - Breathable lightweight cool 100% cotton
 - Washable: maintains flame resistance up to 50 home washings and 25 commercial washings up to 165° F
 - Meets all requirements of NFPA-701 and ASTM-D6413* specifications for flame retardancy

NITRILE



6012

Nitri-Med™
Powder Free Nitrile
Textured Grip, Chlorinated
Class 1 Medical Device
100 Gloves Per Dispenser
10 Dispensers Per Case
6010 4 mil Thickness
6012 6 mil Thickness, 12" Length



6015

NitriShield®
Powder Free Nitrile
4 mil Thickness
Industrial/Food Service
Chlorinated, Textured Grip
100 Gloves Per Dispenser
10 Dispensers Per Case
6015 Powder Free Nitrile - also in XXL
6020 Powdered Nitrile
8 mil Thickness
Chlorinated, Textured Grip
50 Gloves Per Dispenser
20 Dispensers Per Case
6025 Powdered Nitrile
6030 Powder Free Nitrile - also in XXL



6060

NitriShield-Stealth®
Black Powder Free Nitrile
Industrial/Food Service, Textured Grip
100 Gloves Per Dispenser
10 Dispensers Per Case
6062 NitriShield-Stealth® Extra - also in XXL
Black Industrial/Food Service
6 Mil 12" Length



6001

DuraShield®
Powder Free Nitrile
4 mil Thickness
Industry Standard Nitrile
Textured Grip
100 Gloves Per Dispenser
10 Dispensers Per Case
6001 Powder Free Nitrile - also in XXL
6002 Powdered Nitrile
6004 Heavy Weight Powder Free Nitrile
6005 Heavy Weight Powdered Nitrile
Food Service Favorite

LATEX



5045

Sensatouch™
Powder Free Latex
Double Chlorinated
Textured Grip
Class 1 Medical Device
5 mil Thickness
100 Gloves Per Dispenser
10 Dispensers Per Case
5045 Powder Free Latex - also in XXL
Chlorinated - Smooth Grip
5050 Powdered Latex



5049

Med-Tech™
Powder Free Latex
Double Chlorinated
Class 1 Medical Device
50 Gloves Per Dispenser
10 Dispensers Per Case
12" Length, High Risk Blue
5048 15 mil Thickness Latex
5049* 11 mil Thickness Latex
*NFPA 1999 Certified



5055

SensaGuard™
Powder Free Latex
Double Chlorinated
5 mil Thickness
Industrial/Food Service
100 Gloves Per Dispenser
10 Dispensers Per Case
5055 Smooth Grip Latex
5056 Textured Grip Latex
Powdered Latex
Chlorinated
5 mil Thickness
5060 Smooth Grip Latex



5054

Industry Standard Latex
100 Gloves Per Dispenser
10 Dispensers Per Case
5054 Powder Free Textured Grip Latex
5059 Powdered Smooth Grip Latex
Food Service Favorite

VINYL



5010

Sensatouch™
Powder Free Vinyl
Class 1 Medical Device
Clear/5 mil Thickness
100 Gloves Per Dispenser
10 Dispensers Per Case
5000 Powdered Vinyl
5010 Powder Free Vinyl



5020

SensaGuard™
Powdered Vinyl
Clear/5 mil Thickness
Industrial/Food Service
100 Gloves Per Dispenser
10 Dispensers Per Case
5015 Powder Free Vinyl
5020 Powdered Vinyl



5025

SensaGuard™
Powdered Vinyl
Industrial/Food Service
5025 Green/6.5 mil Thickness
100 Gloves Per Dispenser
4 Dispensers Per Case
5030 Blue/5 mil Thickness
100 Gloves Per Dispenser
10 Dispensers Per Case
Powder Free Vinyl
5035 Blue/5 mil Thickness
100 Gloves Per Dispenser
10 Dispensers Per Case



5040

SensaGuard™
Polyethylene
Reversible, Powder Free
Embossed Grip
500 Gloves Per Dispenser
20 Dispensers Per Case
Food Service Favorite
Industry Standard Vinyl,
Clear
5014 Powder Free Vinyl
5019 Powdered Vinyl
100 Gloves Per Dispenser
10 Dispensers Per Case
Food Service Favorite

All Disposable Offerings are Available in L, M, S, XL



6632 Blue Coat

Triple Dipped
Special Oil-Resistant Formula
12" Gauntlet
Seamless Knit Liner
Sizes: L, M, XL, XXL, XXXL

6620 Red Coat

Double Dipped
10" Gauntlet
Seamless Knit Liner
Sizes: L, M, XL, XXL, XXXL



Industry Standard
Single Dipped Smooth Finish
Interlock Lining

- 6100 Knit Wrist
- 6200 10" Gauntlet
- 6212 12" Gauntlet
- 6300 14" Gauntlet
- 6300RH 14" Gauntlet, Right Hand
- 6218 18" Gauntlet
- 6212R 12" Gauntlet, Rough Finish
- 6300R 14" Gauntlet, Rough Finish

6100S

Premium Black
Double Dipped
Sandy Finish
Interlock Lining

- 6100S Knit Wrist
- 6200S 10" Gauntlet
- 6212S 12" Gauntlet
- 6300S 14" Gauntlet
- Jersey Lining
- 6100SJ Knit Wrist
- 6200SJ 10" Gauntlet
- 6212SJ 12" Gauntlet
- 6300SJ 14" Gauntlet



6412

Premium Green
Double Dipped Sandy Finish
Jersey Lining

- 6400 Knit Wrist
- 6410 10" Gauntlet
- 6412 12" Gauntlet
- 6414 14" Gauntlet
- 6418 18" Gauntlet

Industry Standard

- 6420 Knit Wrist
- 6421 10" Gauntlet
- 6422 12" Gauntlet
- 6424 14" Gauntlet



6454S

Premium Red
Double Dipped Sandy Finish
Jersey Lining

- 6450S Knit Wrist
- 6451S 10" Gauntlet
- 6452S 12" Gauntlet
- 6454S 14" Gauntlet



6500S

Double Dipped Textured Finish
Interlock Lining

- 6500S Knit Wrist
- 6510S 10" Gauntlet
- 6512S 12" Gauntlet
- 6514S 14" Gauntlet
- Jersey Lining
- 6500SJ Knit Wrist
- 6510SJ 10" Gauntlet
- 6512SJ 12" Gauntlet
- 6514SJ 14" Gauntlet

Industry Standard
Double Dipped Sandy Finish
Interlock Lining

- 6520S Knit Wrist
- 6521S 10" Gauntlet
- 6522S 12" Gauntlet
- 6524S 14" Gauntlet
- 6528S 18" Gauntlet
- Jersey Lining
- 6520SJ Knit Wrist
- 6521SJ 10" Gauntlet
- 6522SJ 12" Gauntlet
- 6524SJ 14" Gauntlet



6410SC

Premium Double Dipped
Green PVC over Hi-Vis Orange PVC
Jersey Liner, Sandy Finish, Safety Cuff

- 6410SCHV Hi-Vis Orange on Hi-Vis Lime Safety Cuff



6714FF Harbor Master

Premium Fluorescent Orange
Double Dipped, Red Sandy Finish
Both Foam and Polar Fleece
Linings, Internal Knit Wrist,
6714FF 14" Gauntlet

Double Dipped Sandy Finish
Foam Lined and Fully Coated
Fluorescent Orange

- 6700F Knit Wrist
- 6710F Safety Cuff
- Size: L
- 6710T Tan Safety Cuff
- Size: L

Single Dipped Sandy Finish
Foam Lined and Fully Coated
Fluorescent Orange

- 6702F Knit Wrist
- 6710FS Safety Cuff
- 6712F 12" Gauntlet
- Size: L



9890 Whizzbang®

- 9890 Whizzbang® Two-Piece Interlock Liner
Sizes: L, M, S
- 9892 Whizzbee® Jersey Liner, Seams Out Pattern
Sizes: L, M, S
- 9894 Whizz-knit II® Seamless Knit Liner
Knit Wrist
Sizes: L
- 9891 Whizz-knit® Seamless Liner
Sizes: L, M, S, XS

NEOPRENE



6912 Neomax™
Sandy Finish
Double Dipped
Brushed Interlock Lining
6912 12" Gauntlet
Sizes: L, M, S, XL
6914 14" Gauntlet
Size: L



6950 Black Jack™
Smooth
Fully Coated
Brushed Interlock Lining
31" Shoulder Length
6922 12" Gauntlet
6924 14" Gauntlet
6948 18" Gauntlet



6964 Duoprene™
Sandy Finish
Double Dipped
Brushed Interlock Lining
6962 12" Gauntlet
Sizes: L, M, S, XL
6964 14" Gauntlet
Size: L



6944 Black Jack™
Fully Coated
Etched Rough Finish
Brushed Interlock Lining
6944 14" Gauntlet, Foam Lining
6932 12" Gauntlet



Foam Lining

NATURAL RUBBER



6850 Blue Grit®
Textured Rubber Coating
Interlock Lining
Features Waterproof Protection.
6850 10" Length
6852 12" Length
Sizes: L, S



Textured Nitrile and Rubber Coating
12" Length
Interlock Lining
Features Extra Abrasion Protection
and Waterproof Protection.
6862 Sizes: L, M, S



6820 TuffTex™
Premium Grade
Crinkle Finish Natural Rubber
Rubberized Safety Cuff
Cotton Jersey Shell
6825 Knit Wrist Cotton Jersey Shell
6832 Cotton Seamless Knit Shell
Sizes: L, S



6885 PlyFlex™
Textured Latex Coating
12" Length
Interlock Lining
Provides Excellent Dexterity & Flexibility
in Wet and Dry Conditions.
Size: L, M, S, XL



6800 Safety Cuff
6810 Duck Cuff
6830 Knit Wrist
6831 Knit Wrist,
Fully Coated
6840 Safety Cuff

6845
Crinkle Finish Natural Rubber
12" Gauntlet
Interlock Lining
Size: L

NITRILE



9761 Predator™
 Nitrile Fully Coated
 CE Score 4221
 9750 Palm Coated Knit Wrist
 9751 Premium Knit Wrist
 9760 2 1/2" Safety Cuff
 9761 Premium 2 1/2" Safety Cuff
 9770 Premium Foam Lined
 2 1/2" Safety Cuff
 Size: L
Industry Standard
 97951 Industry Standard Knit Wrist
 97961 Industry Standard 2 1/2" Safety Cuff



9780 Predalite™
 Predalite™
 Palm Coated
 9780 Premium Knit Wrist
 CE Score 3111
 9785 2 1/2" PVC Safety Cuff, CE Score 4121
 Sizes: L, M, S, XL
Fully Coated - CE Score 4121
 9781 Premium Knit Wrist, CE Score 3111
 9786 2 1/2" PVC Safety Cuff, CE Score 4121
 Sizes: L, M, S, XL
Industry Standard
 97980 Palm Coated, Knit Wrist
 97981 Fully Coated, Knit Wrist
 Sizes: L, M, S, XL



9790 Predatouch™
 Predatouch™
 Fine Interlock Liner
 Palm Coated
 Knit Wrist
 CE Score 2111
 Sizes: L, M, S, XL, XS



9782 Predaknit™
 Predaknit®
 Interlock Liner
 Rough Finish
 CE Score 3121
 9782 12" Gauntlet
 Sizes: L, M, S, XL
 9784 14" Gauntlet
 Size: L



9761R Predator™
 Extra Rough Nitrile Coating
 Fully Coated - CE Score 4242
 9761R 2 1/2" Safety Cuff
 9751R Knit Wrist
 Palm Coated - CE Score 4242
 9760R 2 1/2" Safety Cuff
 9750R Knit Wrist
 Size: L



9760K Predator™
 9760K shell
9760K
 KEVLAR® Reinforced Palm
 Extra Cut Protection
 Jersey Back for Breathability
 Nitrile Palm Coated
 Nitrile Coated Safety Cuff
 CE Score 4432
 Size: L



9792 Predaflex™
 Predaflex™
 Brushed Interlock Liner
 Rough Finish
 CE Score 4121
 9792 12" Gauntlet
 9794 14" Gauntlet
 9796 Shoulder Length Yellow
 Size: L



9685 Predastretch™
 13-Gauge
 Seamless Knit Shell
 12" Gauntlet
 CE Score 3121
 Features Waterproof and Liquid Protection.
 Sizes: L, M, S

NITRILE

DISPLAYS



4 PEG DISPLAY



8 PEG DISPLAY



12 PEG DISPLAY

POPDISPLAY

POP Display Kit
24"W x 72"H Grid Display
MCR PPE Signage
Shelving and Fixtures
Call for configuration options.

*Display shown with additional fixtures.
Product and packaging not included with kit.