



Nothing but **HEAVY DUTY.**

A close-up, angled shot of a red Milwaukee tool case. The case is open, revealing a black interior. The Milwaukee logo, featuring the word "Milwaukee" in white with a lightning bolt graphic, is prominently displayed on the inside of the red lid. The lighting is dramatic, highlighting the texture of the plastic and the metallic components of the case.

Milwaukee

FULL LINE-UP PRODUCT CATALOGUE

M12

DRILLING

10 mm (3/8") Drill Driver, 12V	4
10 mm (3/8") Right Angle Drill Driver, 12V	4

FASTENING

1/4" Hex Sub-Compact Driver, 12V	4
1/4" Hex Sub-Compact Impact Driver, 12V	5
1/2" Hex Sub-Compact Impact Wrench, 12V	5

CUTTING

Hackzall™ Reciprocating Saw, 12V	5
Copper Tube Cutter, 12V	6

INSPECTING CAMERA

9.5 mm Multimedia Analogue Camera, 12V	6
17 mm Multimedia Digital Camera, 12V	6
Digital Inspection Camera, 12V	6

KITS

Compact 2 Piece Kit, 12V	7
Compact 3 Piece Kit, 12V	7
Compact 4 Piece Kit, 12V	7-8

OTHER

Compact Jobsite Radio, 12V	8
Power Port, 12V	8
Torch, 12V - Skin	9
1.5 Ah Lithium-ion Battery Pack, 12V	9
3.0 Ah Lithium-ion Battery Pack, 12V	9
Battery Charger, 12V	9

M18

DRILLING

13 mm (1/2") Compact Drill Driver, 18V	10
13 mm (1/2") Compact Hammer Drill Driver, 18V	10
13 mm (1/2") Heavy Duty Drill Driver, 18V	11
13 mm (1/2") Heavy Duty Hammer Drill Driver, 18V	11

FASTENING

1/4" Hex Heavy Duty Impact Driver, 18V	11-12
1/2" Heavy Duty Impact Wrench, 18V	12
1/2" High Torque Impact Wrench, 18V	12

CUTTING & GRINDING

115 mm (4 1/2") Heavy Duty Angle Grinder, 18V	12
Heavy Duty Circular Saw, 18V	13
Heavy Duty Jigsaw, 18V - Skin	13
Heavy Duty Bandsaw, 18V - Skin	13
Heavy Duty Sawzall™ Reciprocating Saw, 18V	14
Heavy Duty Hackzall™ Reciprocating Saw, 18V	14

KITS

Compact 2 Piece Kit, 18V	14
Heavy Duty 2 Piece Kit, 18V	14
Heavy Duty 4 Piece Kit, 18V	15
Heavy Duty 6 Piece Kit, 18V	15

OTHER

Jobsite Radio, 12V-28V	16
Heavy Duty Vacuum Cleaner / Blower, 18V - Skin	16
Heavy Duty Work Light, 18V - Skin	16
1.5 Ah Lithium-ion Battery Pack, 18V	17
3.0 Ah Lithium-ion Battery Pack, 18V	17
Battery Charger, 18V	17

V28

DRILLING

13 mm (1/2") Hammer Drill Driver, 28V	18
3 Mode SDS-plus Rotary Hammer, 28V	18

FASTENING

1/2" Impact Wrench, 28V	18
-------------------------------	----

CUTTING & GRINDING

115 mm (4 1/2") Angle Grinder, 28V	19
165 mm Circular Saw, 28V	19
Jigsaw, 28V - Skin	19
Bandsaw, 28V	20
Sawzall™ Reciprocating Saw, 28V	20

KITS

2 Piece Kit, 28V	20
3 Piece Kit, 28V	21
4 Piece Kit, 28V	21
5 Piece Kit, 28V	21

OTHER

Jobsite Radio, 12V-28V	21
Heavy Duty Vacuum Cleaner / Blower, 28V - Skin	22
Torch, 28V - Skin	22
3.0 Ah Lithium-ion Battery Pack, 28V	22
Battery Charger, 28V	22

AC

DRILLING

13 mm Hammer Drill, 705W	24
13 mm Hammer Drill, 1010W	24
13 mm Hammer Drill, 750W	24
13 mm Drill, 950W	25
13 mm Drill, 825W	25
32 mm Morse Taper Drill MK 3 mm, 1050W	25
254 mm Diamond Core Motor, 2800W	26
178 mm Diamond Core Motor, 2800W	26
SDS-plus Rotary Hammer, 725W	26
SDS-plus 3 Mode Rotary Hammer, 820W	27
SDS-plus 3 Mode Rotary Hammer, 1030W	27
2.5 Kg 2 Mode SDS-plus Rotary Hammer, 680W	27
2.9 Kg 3 Mode SDS-plus Rotary Hammer, 770W	27
3.0 Kg 3 Mode SDS-plus Rotary Hammer, 800W	28
3.6 Kg 3 Mode SDS-plus Rotary Hammer, 900W	28
6.7 Kg 2 Mode SDS-max Rotary Hammer, 1300W	28
11.8 Kg 2 Mode K-Hex Rotary Hammer, 1700W	28
11.8 Kg 2 Mode SDS-max Rotary Hammer, 1700W	29
11.0 Kg K-Hex Demolition Breaker, 1600W	29

FASTENING

1/4" Screwgun, 725W	29
Drywall Screwgun, 725W	29
3/4" Impact Wrench, 725W	30
1/2" Impact Wrench, 725W	30

CUTTING & GRINDING

190 mm Circular Saw, 1900W	30
Body Grip Jigsaw, 710W	30
Top Handle Jigsaw, 750W	31
12" (305mm) Slide Compound Mitre Saw, 1800W	31
Mitre Saw Stand	31
32 mm Sawzall™ Reciprocating Saw, 1000W	32
32 mm Sawzall™ Reciprocating Saw, 1300W	32
6 mm Die Grinder, 500W	32
6 mm Die Grinder, 600W	32
125 mm Straight Grinder, 1300W	33
125 mm Wall Chaser, 1500W	33
150 mm Wall Chaser, 1900W	33
230 mm Wall Chaser, 2300W	33
Metal Shear, 500W	34
Nibbler, 500W	34
100 mm (4") Angle Grinder, 750W	34
100 mm (4") Angle Grinder, 1100W	34
125 mm (5") Angle Grinder, 850W	35
125 mm (5") Angle Grinder, 1100W	35
125 mm (5") Angle Grinder, 1200W	35
125 mm (5") Angle Grinder, 1250W	35
125 mm (5") Angle Grinder, 1500W	36
125 mm (5") Angle Grinder, 1520W	36
180 mm (7") Angle Grinder, 1520W	36

OTHER

180 mm Disc Sander, 1200W	36
150 mm Polisher Sander, 1200W	37

ACCESSORIES

Ice Hardened™ Hole Saws	38
Carbide Tipped Hole Cutters	42
BIG HAWG™	42
Selffeed Bits	43
Forstner Wood Bits	44
Wood Auger Bits	44
Flat Boring Bits	45
Drill Bits	45
Jobbers	46
Shockwave Impact Duty™	47
SDS-plus	50
SDS-max	52
21mm K - Hexagonal Accessories	52
Bellhangers	53
Cable Bits	54
Sawzall™ Blades	54
Diamond Grit Sawzall™ Blades	58
Hackzall™ Blades	58
Circular Saw Blades	59
Bandsaw Blades	59
Jigsaw Blades	60
Workgear	61
Chucks	62
Caulking Gun Accessories	64
1/4" Hex Accessories	64
Drill Size Conversions (Imperial to Metric)	65



INDUSTRY'S NUMBER ONE SUB-COMPACT SYSTEM

Need tool belt portability in your cordless tools, without sacrificing power and speed? Check out the expanded M12™ LITHIUM-ION cordless system from Milwaukee® – the most powerful sub-compact system in the world.

C12DD-22C

10 mm (3/8") Drill Driver

COMPACT AND POWERFUL, BEST-IN-CLASS

FEATURES

- Drills and drives faster (0-400 / 0-1500 rpm)
- Delivers 28 Nm of torque in compact lightweight design
- Metal locking chuck and gear box
- Rubber over-mold front, rear and top grips
- Integrated LED Light and Fuel Gauge

INCLUDES

2 x 1.5 Ah Li-ion Batteries, 12V Charger, Carry Case

Also available as tool only - **C12DD-0**

SPECIFICATIONS

No Load Speed	0 - 400 / 0 - 1500 rpm	Belt Clip	No
Torque	28 Nm	LED Light	Yes
Chuck Capacity	10 mm (3/8") - Keyless	Spindle Lock	Yes
Clutch Settings	21 + 1	Weight with battery pack	1.05 kg



C12RAD-22B

10 mm (3/8") Right Angle Drill Driver

IDEAL FOR WORKING IN TIGHT WORK AREAS

FEATURES

- 95 mm Head Length, great for working in tight spaces
- 10 mm Single Sleeve Chuck with spindle lock, maximum versatility and grip
- Electronic Clutch, 11 settings plus Drill Mode for complete control
- Metal Gearbox and Gears, maximum performance and long life
- Slimline Softgrip Handle and extended Paddle Switch

INCLUDES

2 x 1.5 Ah Li-ion Batteries, 12V Charger, Carry Case

Also available as tool only - **C12RAD-0**

SPECIFICATIONS

No Load Speed	0 - 800 rpm	Clutch Settings	11 + Drill
Torque	14 Nm	Head Length	95 mm
Drilling Capacity (steel/wood)	10 / 22 mm	LED Light / Spindle Lock	Yes
Chuck Capacity	10 mm (3/8") - Keyless	Weight with battery pack	1.1 kg



C12D-LI

1/4" Hex Sub-Compact Driver

THE POWER TO DRIVE COMMON SMALL FASTENERS WITH EXCELLENT RUN-TIME

FEATURES

- Perfect maintenance tool
- 160 mm compact size, ideal for working in tight places
- One handed quick bit change, Keyless 1/4" Hex Chuck
- Rubber over-mold front, rear and top grips
- Ergonomic, extremely lightweight with slimline handle

INCLUDES

2 x 1.5 Ah Li-ion Batteries, 12V Charger, #2 Phillips 1/4" Hex Bit, Carry Case

Also available as tool only - **C12D-0**

SPECIFICATIONS

No Load Speed	0 - 500 rpm	Chuck Capacity	1/4" (6.35 mm) hex
Torque	19 Nm	Clutch Settings	15 + 1
Wood Screws	6 mm	LED Light	Yes
Drilling Capacity (steel/wood)	10 / 16 mm	Weight with battery pack	0.9 kg





C12ID-22C

1/4" Hex Sub-Compact Impact Driver

POCKET SIZE CONVENIENCE WITH TURBO GRUNT

FEATURES

- Powerful Motor delivering 96 Nm torque, 0-2000 rpm and 0-3000 IPM
- 165 mm compact size, ideal for working in tight places
- One handed quick bit change, keyless 1/4" Hex Chuck
- Rubber over-mold front, rear and top grips
- Metal Gear Box, job site durability and maximum performance

INCLUDES

2 x 1.5 Ah Li-ion Batteries, 12V Charger, Carry Case

Also available as tool only - **C12D-0**

SPECIFICATIONS

No Load Speed	0 - 2000 rpm	Belt Clip	No
Impact Rate	0 - 3000 IPM	LED Light	Yes
Torque	96 Nm	Weight with battery pack	1.0 kg
Chuck Capacity	1/4" (6.35 mm) Hex		



C12IW-22C

1/2" Hex Sub-Compact Impact Wrench

POWER AND CONVENIENCE IN A COMPACT LIGHTWEIGHT DESIGN

FEATURES

- Powerful Impact Mechanism, delivers up to 136 Nm torque
- 165mm compact size, ideal for working in tight places
- Easy socket insertion/release and increased durability
- Rubber over-mold front, rear and top grips
- Ergonomic, extremely lightweight with slimline handle

INCLUDES

2 x 1.5 Ah Li-ion Batteries, 12V Charger, Carry Case

Also available as tool only - **C12IW-0**

SPECIFICATIONS

No Load Speed	0 - 2000 rpm	Belt Clip	No
Impact Rate	0 - 3000 IPM	LED Light	Yes
Torque	136 Nm	Weight with battery pack	1.0 kg
Tool Reception	1/2" (13 mm) Square		



C12HZ-22C

Hackzall™ Reciprocating Saw

ULTIMATE COMPACT DESIGN TO CUT ALMOST ANYTHING ANYWHERE

FEATURES

- 80 cuts of 40 mm PVC per charge
- Cuts 3,000 strokes per minute
- Tool less Quik-Lok™ blade clamp
- 280 mm in length, compact design
- Metal Gear Box, jobsite durability

INCLUDES

2 x 1.5 Ah Li-ion Batteries, 12V Charger, 2 x Hackzall™ Blades, Carry Case

Also available as tool only - **C12HZ-0**

SPECIFICATIONS

No Load Speed	0 - 3000 spm	Charge Time	30 mins
Stroke Length	13 mm	Weight with battery pack	1.2 kg
Blade Clamp	Tool less, Quik-Lok™		
LED Light	Yes		



C12PC-21C

Copper Tube Cutter

CUT COPPER UP TO 10 TIMES FASTER

FEATURES

- Performs up to 200 cuts on a single charge
- Auto-adjusting jaws automatically adjust to pipe size (12-28 mm)
- Water resistant sealed metal cutter, long life
- Auto-locking cut mechanism
- Rubber over-mold front, rear and top grips

INCLUDES

1 x 1.5 Ah Li-ion Battery, 12V Charger, Carry Case. Also available as tool only - **C12PC-0**

SPECIFICATIONS

No Load Speed	0 - 500 rpm	LED Light	Yes
Copper Tube Size	12,15,18,22,25,28 mm	Charge Time	30 mins
Minimum vertical clearance for tube cutting	80 mm	Weight with battery pack	1.5 kg



C12ICAVA-21C

9.5 mm Multimedia Analogue Camera

INSPECT AND RECORD WORK AREAS, STORE AND SHARE INFORMATION

FEATURES

- 4X zoom and 4X LED brightness
- Fits into 9.5 mm holes
- USB Cable for downloading files to computer
- Rotate both live and captured images, rotate 180°
- Integrated microphone and speaker

INCLUDES

1 x 1.5 Ah Li-ion Batteries, 12V Charger, 9.5 mm Digital Camera Cable, 2 GB Memory Card, USB Cable, Carry Case

SPECIFICATIONS

Display Size	89 mm x 89 mm	Camera Cable Length	914 mm
Display Resolution	320 x 240	Auto Shut-Off	Yes
Image Zoom	Up to 400%	Run-time	12 hours
Camera Head Diameter	9.5 mm	Weight with cable	0.9 kg



C12ICAVD-21C

17 mm Multimedia Digital Camera

INSPECT AND RECORD WORK AREAS, STORE AND SHARE INFORMATION

FEATURES

- 4X zoom and 4X LED brightness
- Fits into 17 mm holes
- USB Cable for downloading files to computer
- Rotate both live and captured images, rotate 180°
- Integrated microphone and speaker

INCLUDES

1 x 1.5 Ah Li-ion Batteries, 12V Charger, 17 mm Analogue Camera Cable, 2 GB Memory Card, USB Cable, Carry Case

SPECIFICATIONS

Display Size	89 mm x 89 mm	Camera Cable Length	914 mm
Display Resolution	320 x 240	Auto Shut-Off	Yes
Image Zoom	Up to 400%	Run-time	12 hours
Camera Head Diameter	17 mm	Weight with Cable	0.9 kg



C12IC-21C

Digital Inspection Camera

WITH ADVANCED DIGITAL IMAGING AND TECHNOLOGY

FEATURES

- 2X zoom and 3X LED brightness
- Small camera head design fits into 17 mm holes, waterproof
- Power saving, auto shut-off feature preserves battery life
- Ergonomic 'in line' handle and controls
- 914 mm Extendable Flexible Cable

INCLUDES

1 x 1.5 Ah Li-ion Batteries, 12V Charger, 914 mm Cable, Carry Case
Also available as tool only - **C12IC-0**

SPECIFICATIONS

LCD Display Size	60 mm x 60 mm	Camera Cable Length	914 mm
Display Resolution	320 x 240	Auto shut-off	Yes
Image Zoom	Up to 200%	Run Time	15 hours
Camera Head Diameter	17 mm	Weight with Cable	0.82 kg





C12PP2A-22C

Compact 2 Piece Kit

TOOLS

- C12D-LI 1/4" Hex Sub-Compact Driver, 12V
Refer to page 4 for detailed specifications and features
- C12IC Digital Inspection Camera, 12V
Refer to page 6 for detailed specifications and features

INCLUDES

2 x 1.5 Ah Li-ion Batteries,
12V Charger, 914 mm Cable,
BMC (for IC only), Carry Bag



C12PP3B-22B

Compact 3 Piece Kit

TOOLS

- C12DD 10 mm (3/8") Drill Driver, 12V
Refer to page 4 for detailed specifications and features
- C12ID 1/4" Hex Sub-Compact Impact Driver, 12V
Refer to page 5 for detailed specifications and features
- C12T Torch, 12V
Refer to page 9 for detailed specifications and features

INCLUDES

2 x 1.5 Ah Li-ion Batteries, 12V Charger, Carry Bag



C12PP4A-22B

Compact 4 Piece Kit

TOOLS

- C12D-LI 1/4" Hex Sub-Compact Driver, 12V
Refer to page 4 for detailed specifications and features
- C12PC Copper Tube Cutter, 12V
Refer to page 6 for detailed specifications and features
- C12HZ Hackzall™
Reciprocating Saw, 12V
Refer to page 5 for detailed specifications and features
- C12T Torch, 12V
Refer to page 9 for detailed specifications and features

INCLUDES

2 x 1.5 Ah Li-ion Batteries, 12V Charger, 2 x Hackzall™ Blades, Carry Bag



C12PP4B-22B

Compact 4 Piece Kit

TOOLS

- C12ID 1/4" Hex Sub-Compact Impact Driver, 12V Refer to page 5 for detailed specifications and features
- C12PC Copper Tube Cutter, 12V Refer to page 6 for detailed specifications and features
- C12HZ Hackzall™ Reciprocating Saw, 12V Refer to page 5 for detailed specifications and features
- C12T Torch, 12V Refer to page 9 for detailed specifications and features

INCLUDES

2 x 1.5 Ah Li-ion Batteries, 12V Charger, 2 x Hackzall™ Blades, Carry Bag



C12PP4C-22B

Compact 4 Piece Kit

TOOLS

- C12DD 10 mm (3/8") Drill Driver, 12V Refer to page 4 for detailed specifications and features
- C12ID 1/4" Hex Sub-Compact Impact Driver, 12V Refer to page 5 for detailed specifications and features
- C12HZ Hackzall™ Reciprocating Saw, 12V Refer to page 5 for detailed specifications and features
- C12T Torch, 12V Refer to page 9 for detailed specifications and features

INCLUDES

2 x 1.5 Ah Li-ion Batteries, 12V Charger, 2 x Hackzall™ Blades, Carry Bag



C12JSR-0

Compact Jobsite Radio

LISTEN TO YOUR FAVOURITE TUNES ALL DAY

FEATURES

- Digital Processor
- Weatherproof Aluminium Speakers
- Weather Sealed MP3 Compartment
- Shock Absorbing ABS Polymer Housing
- Ultra Slim Size, only 26 cm and 1.6 kg

INCLUDES

Tool Only (Supplied in Carton), AC Adaptor

SPECIFICATIONS

Digital Tuner	Yes	Digital Display / Clock	Yes
Bands	AM / FM	Equaliser	Yes
Auxiliary Input	Yes	Presets	10
MP3 Player Storage	Yes	AC Power / DC Power	Yes



C12PP-0

Power Port

CHARGE ANYTHING, ANYWHERE

FEATURES

- Portable charger capable of charging 5 devices with one charge
- Auxiliary (DC) and USB Ports
- LED Charge Status Indicator
- Electronic Overload Protection

INCLUDES

Tool Only (Supplied in Carton)

SPECIFICATIONS

Protects from		Charge Status LED	Yes
Current Draw	3A (DC) / 750Ma (USB)	Battery Type (not included)	1.5 Ah Li-ion
Electronic Overload Protection	Yes	Charge Time	30 mins
		Weight with battery pack	0.34 kg



C12T

Torch - Skin

POWERFUL USER FRIENDLY TORCH WITH MAGNETIC TOOL HOLDER,
GREAT FOR 'HANDS FREE' USE

FEATURES

- Incandescent Bulb
- 90° Rotating Head
- Integrated Magnet provides hands-free use
- Ergonomic, compact and lightweight, user comfort and portability

INCLUDES

Tool Only (Supplied in Carton)



M12

SPECIFICATIONS

Bulb Type	Incandescent	Charge Time	30 mins
Aluminium Head	Yes	Weight with battery pack	0.36 Kg
Magnetic Back	Yes		
Battery Type (not included)	1.5 Ah Li-ion		

C12B

1.5 Ah Lithium-ion Battery Pack

SUPERIOR PERFORMANCE AND RUN-TIME

FEATURES

- Lithium-ion Batteries
- Ergonomic, compact and lightweight design
- M12™ Compatibility, compatible with all Milwaukee M12™ Cordless Tools and Electronics

INCLUDES

Tool Only (Supplied in Carton)



SPECIFICATIONS

Amps	1.5 Ah
Weight	0.2 kg
Carry Case	No

C12BX

3.0 Ah Lithium-ion Battery Pack

SUPERIOR PERFORMANCE AND RUN-TIME

FEATURES

- 2X the run-time and enhanced performance
- High Current Discharge, maximum power and speed
- Sturdy Rubber Over-Mold Base
- Compact and Lightweight
- M12™ Compatibility

INCLUDES

Tool Only (Supplied in Carton)



SPECIFICATIONS

Amps	3.0 Ah	Carry Case	No
Length	625 mm		
Width	875 mm		
Weight	0.4 Kg		

C12C

Battery Charger

STAY CHARGED ALL DAY

FEATURES

- 30 / 45 Minute Charger
- 1 Year Warranty
- Charges:
 - C12B 1.5 Ah Li-ion Battery Pack, 12V (30 mins)
 - C12BX 3.0 Ah Li-ion Battery Pack, 12V (45 mins)

INCLUDES

Tool Only (Supplied in Carton)



SPECIFICATIONS

Charge Time	30 / 45 mins
Weight with battery pack	0.74 / 0.94 kg
Warranty	1 year



THE FASTEST GROWING LITHIUM-ION CORDLESS SYSTEM

The fastest growing M18™ LITHIUM-ION cordless system delivers more torque, more power, and longer run-time than the competition, and is backed by an exclusive 5 Year Warranty. Patented technologies and electronics, innovative motor design, and superior ergonomics provide the most efficient combination of power, weight and performance.

C18DD-LI

13 mm (1/2") Compact Drill Driver

HEAVY DUTY DRIVING AND DRILLING IN A COMPACT DESIGN

FEATURES

- 2 Speed Metal Gear Box
- Delivers 45 Nm of torque in compact lightweight design
- Superior bit grip prevents frequent bit retightening and lost bits
- Optimised tool balance, weight and grip
- Rubber over-mold front, rear and top grips

INCLUDES

2 x 1.5 Ah Li-ion Batteries, 18V Charger, Carry Case

Also available as tool only - **C18DD-0**

SPECIFICATIONS

No Load Speed	0 - 350 / 0 - 1400 rpm	Clutch Settings	23 + 1
Torque	45 Nm	Belt Clip	Yes
Drilling Capacity (steel/wood)	13 / 32 mm	LED Light / Spindle Lock	Yes
Chuck Capacity	13 mm (1/2") - Keyless	Weight with battery pack	1.8 kg



C18PD-32C

13 mm (1/2") Compact Hammer Drill Driver

COMPACT HEAVY DUTY DRIVER WITH HAMMER MODE CONVENIENCE

FEATURES

- 4-Pole Motor delivers maximum power and tool efficiency
- Hammer mechanism delivers 29,000 BPM with powerful 62 Nm torque
- 2 Speed Metal Gear Box
- 3 Stage Mode Selector
- Compact Ergonomic Design
- Metal Gear Case, jobsite durability

INCLUDES

2 x 3.0 Ah Li-ion Batteries, 18V Charger, Carry Case

SPECIFICATIONS

No Load Speed	0 - 450 / 0 - 1700 rpm	Clutch Settings	24
Torque	62 Nm	Belt Clip	Yes
Percussion Rate	29000 BPM	LED Light / Spindle Lock	Yes
Chuck Capacity	13 mm (1/2") - Keyless	Weight with battery pack	2.3 kg



C18PD-22C

13 mm (1/2") Compact Hammer Drill Driver

COMPACT HEAVY DUTY DRIVER WITH HAMMER MODE CONVENIENCE

FEATURES

- 4-Pole Motor delivers maximum power and tool efficiency
- Hammer mechanism delivers 29,000 BPM with powerful 51 Nm torque
- 2 Speed Metal Gear Box
- 3 Stage Mode Selector
- Compact Ergonomic Design and Metal Gear Case

INCLUDES

2 x 1.5 Ah Li-ion Batteries, 18V Charger, Carry Case

Also available as tool only - **C18PD-0**

SPECIFICATIONS

No Load Speed	0 - 450 / 0 - 1700 rpm	Clutch Settings	24
Torque	51 Nm	Belt Clip	Yes
Percussion Rate	29000 BPM	LED Light / Spindle Lock	Yes
Chuck Capacity	13 mm (1/2") - Keyless	Weight with battery pack	2.0 kg





HD18DD-32C

13 mm (1/2") Heavy Duty Drill Driver

OUTSTANDING PERFORMANCE AND MOST POWERFUL IN ITS CLASS

FEATURES

- 4-Pole Motor delivers maximum power and tool efficiency
- 2 Speed Metal Gear Box
- Powerful 73 Nm torque, compact and high performance
- 2 Stage Mode Selector
- Rubber over-mold front, rear and top grips

INCLUDES

2 x 3.0 Ah Li-ion Batteries, 18V Charger, Side Handle, Carry Case
Also available as tool only - **HD18DD-0**

SPECIFICATIONS

No Load Speed	0 - 450 / 0 - 1800 rpm	Clutch Settings	24
Torque	73 Nm	LED Light	Yes
Drilling Capacity (steel/wood)	13 / 55 mm	Spindle Lock	Yes
Chuck Capacity	13 mm (1/2") - Keyless	Weight with battery pack	2.4 kg



HD18PD-32C

13 mm (1/2") Heavy Duty Hammer Drill Driver

HUGE RUN TIME WITH BEST IN CLASS DRILLING SPEED

FEATURES

- 4-Pole Motor delivers maximum power and tool efficiency
- Hammer mechanism delivers 28,000 BPM
- 2 Speed Metal Gear Box and 3 Stage Mode Selector
- Powerful 73 Nm torque, compact and high performance
- Rubber over-mold front, rear and top grips

INCLUDES

2 x 3.0 Ah Li-ion Batteries, 18V Charger, Side Handle, Carry Case
Also available as tool only - **HD18PD-0**

SPECIFICATIONS

No Load Speed	0 - 450 / 0 - 1800 rpm	Clutch Settings	24
Torque	73 Nm	LED Light	Yes
Drill Capacity (steel/wood/stone)	13 / 55 / 16 mm	Spindle Lock	Yes
Chuck Capacity	13 mm (1/2") - Keyless	Weight with battery pack	2.4 kg



C18ID-32C

1/4" Hex Heavy Duty Impact Driver

ULTIMATE DRIVING POWER AND PERFORMANCE TO TACKLE THE HARDEST JOBS

FEATURES

- 4-Pole Motor delivers maximum power and tool efficiency
- Powerful 158 Nm torque, high performance
- Impact mechanism increases driving speed to 2200 rpm
- Delivers 3200 impacts per minute
- Lightweight and compact
- Rubber over-mold front, rear and top grips

INCLUDES

2 x 3.0 Ah Li-ion Batteries, 18V Charger, Carry Case

SPECIFICATIONS

No Load Speed	0 - 2200 rpm	Belt Clip	Yes
Torque	158 Nm	LED Light	Yes
Percussion Rate	0 - 3200 IPM	Weight with battery pack	1.6 kg
Tool Reception	1/4" (6.35 mm) Hex - Keyless		



C18ID-22C

1/4" Hex Heavy Duty Impact Driver

ULTIMATE DRIVING POWER AND PERFORMANCE TO TACKLE THE HARDEST JOBS

FEATURES

- 4-Pole Motor delivers maximum power and tool efficiency
- Powerful 158 Nm torque, high performance
- Impact mechanism increases driving speed to 2200 rpm
- Delivers 3200 impacts per minute
- Rubber over-mold front, rear and top grips

INCLUDES

2 x 1.5 Ah Li-ion Batteries, 18V Charger, Carry Case

Also available as tool only - **C18ID-0**

SPECIFICATIONS

No Load Speed	0 - 2200 rpm	Belt Clip	Yes
Torque	158 Nm	LED Light	Yes
Percussion Rate	0 - 3200 IPM	Weight with battery pack	1.3 kg
Tool Reception	1/4" (6.35mm) Hex - Keyless		



C18IW-32C

1/2" Heavy Duty Impact Wrench

SMALL ENOUGH TO FIT INTO TIGHT SPACES, YET DELIVERS 250 NM OF TORQUE

FEATURES

- 4-Pole Motor delivers maximum power and tool efficiency
- Maximum application speed for fast application completion
- 1/2" Square Drive with Detent Pin
- 140 mm compact size
- Rubber over-mold front, rear and top grips

INCLUDES

2 x 3.0 Ah Li-ion Batteries, 18V Charger, Carry Case

Also available as tool only - **C18IW-0**

SPECIFICATIONS

No Load Speed	0 - 2200 rpm	Belt Clip	Yes
Percussion Rate	0 - 3200 IPM	LED Light	Yes
Torque	250 Nm	Weight with battery pack	1.8 kg
Tool Reception	1/2" (13 mm) Square Drive		



HD18HIW-32C

1/2" High Torque Impact Wrench

MAXIMUM POWER AND GRUNT IN HEAVY APPLICATIONS

FEATURES

- 4-Pole Motor delivers maximum power and tool efficiency
- Powerful Impact Mechanism for maximum performance
- 1/2" Square Drive with Detent Pin
- 225 mm compact size
- Rubber over-mold front, rear and top grips

INCLUDES

2 x 3.0 Ah Li-ion Batteries, 18V Charger, Carry Case

Also available as tool only - **HD18HIW-0**

SPECIFICATIONS

No Load Speed	0 - 1900 rpm	Belt Clip	Yes
Percussion Rate	0 - 2200 IPM	LED Light	Yes
Torque	610 Nm	Weight with battery pack	3.1 kg
Tool Reception	1/2" (13 mm) Square Drive		



HD18AG-32C

115 mm (4-1/2") Heavy Duty Angle Grinder

CORDLESS CONVENIENCE DELIVERING MAXIMUM POWER

FEATURES

- 4-Pole Motor delivers maximum power and tool efficiency
- Optimal Ergonomics
- Multi Position Side Handle
- Metal Gear Case and Tool Free Burst Resistant Guard
- Rubber over-mold front, rear and top grips

INCLUDES

2 x 3.0 Ah Li-ion Batteries, 18V Charger, Flange & Lock Nut, Guard, Carry Case

Also available as tool only - **HD18AG-0**

SPECIFICATIONS

No Load Speed	0 - 8000 rpm	Handle Positions	3
Disc diameter	115 mm (4 1/2")	Spindle Lock	Yes
Cutting Capacity	21 mm	Weight with battery pack	2.2 kg
Spindle Thread	M14 x 2.0 mm		



HD18CS-32C

Heavy Duty Circular Saw

POWERFUL MOTOR DELIVERS FAST, CLEAN CUTS IN TOUGH MATERIALS

FEATURES

- Powerful 3500 rpm motor
- Magnesium upper and lower guards
- Easy to read aircraft aluminium shoe
- Ergonomic soft-grip handle
- Excellent visibility of cutting line and Electronic motor brake

INCLUDES

2 x 3.0 Ah Li-ion Batteries, 18V Charger, Rip Fence, Hex Key, Carry Bag

Also available as tool only - **HD18CS-0**

SPECIFICATIONS

No Load Speed	0 - 3500 rpm	Blade Size	165 mm
Cutting Depth at 90°	0 - 54 mm	Weight with battery pack	3.8 kg
Cutting Depth at 45°	0 - 39 mm		
Arbor Size	16 mm		



HD18JS-0

Heavy Duty Jigsaw - Skin

CORDLESS CONVENIENCE AND SUPER FAST CUTTING IN ALL MATERIALS

FEATURES

- 4-Pole Motor delivers maximum power and tool efficiency
- Oversized blade roller support, maximum blade stability
- Tool free Shoe Bevel
- 5 stage pendulum action
- Rubber Over-Mold Grip with Variable Speed Trigger
- Non-Marring Shoe and Quik-Lok™ Tension Lever

INCLUDES

Tool Only (Supplied in Carton)

SPECIFICATIONS

No Load Stroke Rate	2200 SPM	Stroke Length	25.4 mm
Bevel Capacity	45°	Weight with battery pack	3.5 kg
Pendulum Setting	5		
Cutting Depth (wood / steel)	135 / 10 mm		



HD18BS-0

Heavy Duty Bandsaw - Skin

CORDLESS CONVENIENCE AND FLUSH CUT CAPABILITY

FEATURES

- Compact lightweight design
- Cuts most common materials
- Tool free Adjustable Material Shoe
- Blade Ejection System
- Drop Resistant Pulley Guard
- Cast Aluminium Gear Case

INCLUDES

Tool Only (Supplied in Carton), Blade

SPECIFICATIONS

Surface Feet	480 SFPM	Capacity Round	82.55 mm
No Load Speed	480 rpm	Blade Length	899 mm
Loaded Speed	390 rpm	LED Light	Yes
Capacity Rectangular	82.55 mm x 82.55 mm	Weight with battery pack	4.5 kg



HD18SX-32C

Heavy Duty Sawzall™ Reciprocating Saw

THE LATEST IN COMPACT DESIGN WITH LEGENDARY PERFORMANCE AND DURABILITY

FEATURES

- 4-Pole Motor delivers maximum power and tool efficiency
- Extremely fast cutting without vibration
- Patented gear-protecting clutch
- Patented blade clamp and release lever
- Rubber over-mold front, rear and top grips

INCLUDES

2 x 3.0 Ah Li-ion Batteries, 18V Charger, Sawzall™ Blade, Carry Case
Also available as tool only - **HD18SX-0**

SPECIFICATIONS

Stroke Rate	0 - 3200 SPM
Stroke Length	25.4 mm
Weight with battery pack	3.5 kg



C18HZ-32B

Heavy Duty Hackzall™ Reciprocating Saw

HIGH CUTTING SPEED WITH ONE-HANDED CONVENIENCE

FEATURES

- One-handed design, versatile and complete control
- Compact and lightweight
- Fast cutting through a wide range of material
- Dual Gear Anti-Vibration System
- Quik-Lok™ Blade Clamp

INCLUDES

2 x 3.0 Ah Li-ion Batteries, 18V Charger, Sawzall™ Blade, Carry Bag
Also available as tool only - **C18HZ-0**

SPECIFICATIONS

No Load Speed	0 - 3000 SPM
Stroke Length	20 mm
LED Light	Yes
Weight with battery pack	2.6 kg



C18PP2A-22C

Compact 2 Piece Kit

TOOLS

- C18DD - 13 mm (1/2") Compact Drill Driver, 18V
Refer to page 10 for detailed specifications and features
- C18ID - 1/4" Hex Compact Impact Driver, 18V
Refer to page 12 for detailed specifications and features

INCLUDES

2 x 1.5 Ah Li-ion Batteries, 18V Charger, Carry Case



HD18PP2A-32C

Heavy Duty 2 Piece Kit

TOOLS

- HD18PD - 13 mm (1/2") Heavy Duty Hammer Drill Driver, 18V
Refer to page 11 for detailed specifications and features
- C18ID - 1/4" Hex Heavy Duty Impact Driver, 18V
Refer to page 12 for detailed specifications and features

INCLUDES

2 x 3.0 Ah Li-ion Batteries, 18V Charger, Carry Case



HD18PP4A-32B

Heavy Duty 4 Piece Kit

TOOLS

- HD18PD - 13 mm (1/2") Heavy Duty Hammer Drill Driver, 18V
Refer to page 11 for detailed specifications and features
- HD18SX - Heavy Duty Sawzall™ Reciprocating Saw, 18V
Refer to page 14 for detailed specifications and features
- HD18CS - Heavy Duty Circular Saw, 18V
Refer to page 13 for detailed specifications and features
- C18WL - Heavy Duty Work Light, 18V
Refer to page 16 for detailed specifications and features



INCLUDES

2 x 3.0 Ah Li-ion Batteries, 18V Charger, Rip Fence, Hex Key, Carry Bag

HD18PP4B-32B

Heavy Duty 4 Piece Kit

TOOLS

- HD18PD - 13 mm (1/2") Heavy Duty Hammer Drill Driver, 18V
Refer to page 11 for detailed specifications and features
- C18ID - 1/4" Hex Heavy Duty Impact Driver, 18V
Refer to page 12 for detailed specifications and features
- HD18SX - Heavy Duty Sawzall™ Reciprocating Saw, 18V
Refer to page 14 for detailed specifications and features
- C18WL - Heavy Duty Work Light, 18V
Refer to page 16 for detailed specifications and features



INCLUDES

2 x 3.0 Ah Li-ion Batteries, 18V Charger, Carry Bag

HD18PP6A-32B

Heavy Duty 6 Piece Kit

TOOLS

- HD18PD - 13 mm (1/2") Heavy Duty Hammer Drill Driver, 18V
Refer to page 11 for detailed specifications and features
- C18ID - 1/4" Hex Heavy Duty Impact Driver, 18V
Refer to page 12 for detailed specifications and features
- HD18JS - Heavy Duty Jigsaw, 18V
Refer to page 13 for detailed specifications and features
- HD18SX - Heavy Duty Sawzall™ Reciprocating Saw, 18V
Refer to page 14 for detailed specifications and features
- HD18CS - Heavy Duty Circular Saw, 18V
Refer to page 13 for detailed specifications and features
- C18WL - Heavy Duty Work Light, 18V, Refer to page 16 for details



INCLUDES

2 x 3.0 Ah Li-ion Batteries, 18V Charger, Rip Fence, Hex Key, Carry Bag

HD18PP6B-32B

Heavy Duty 6 Piece Kit

TOOLS

- HD18PD - 13 mm (1/2") Heavy Duty Hammer Drill Driver, 18V
Refer to page 11 for detailed specifications and features
- C18ID - 1/4" Hex Heavy Duty Impact Driver, 18V
Refer to page 12 for detailed specifications and features
- HD18AG - 115 mm (4 1/2") Heavy Duty Angle Grinder, 18V
Refer to page 12 for detailed specifications and features
- HD18SX - Heavy Duty Sawzall™ Reciprocating Saw, 18V
Refer to page 14 for detailed specifications and features
- HD18CS - Heavy Duty Circular Saw, 18V
Refer to page 13 for detailed specifications and features
- C18WL - Heavy Duty Work Light, 18V
Refer to page 16 for detailed specifications and features



INCLUDES

2 x 3.0 Ah Li-ion Batteries, 18V Charger, Rip Fence, Hex Key, Carry Bag

C12-28DCR-0

Jobsite Radio

AWESOME SOUND QUALITY AND JOBSITE DURABILITY

FEATURES

- Digital AM/FM Processor
- Premium Mid-Range Speakers, Separate 1" Tweeters & 40 Watt Amplifier
- Weather Sealed Auxiliary Compartment
- Shock Absorbing ABS Polymer and Steel Construction
- Customisable Equalizer and 10-Station Preset
- AC/DC Versatility
- Built-In Bottle Opener
- 12V DC Output provides power to charge

INCLUDES

Tool Only (Supplied in Carton)

SPECIFICATIONS

Amplifier	40 Watts	Auxiliary Input	3.5 mm Stereo Jack
Speakers	4" High Performance Poly	Bottle Opener / Cord Wrap	Yes
Digital Display	Yes	Dimensions	495 x 241 x 279 mm
Equaliser	Customisable (Base & Treble)	Weight with battery pack	8.0 kg



HD18VC-0

Heavy Duty Vacuum Cleaner / Blower - Skin

KEEP WORK AREAS CLEAN AND DRY

FEATURES

- Strong Air Power and Suction
- Washable, reusable wet/dry filter
- Stackable toolbox design
- Convenient onboard hose and accessory storage
- Built-in Blower Port

INCLUDES

Tool Only (Supplied in Carton), Crevice Tool, Wide Nozzle, Hose, Filter

SPECIFICATIONS

Material	Wet / Dry	Height	292 mm
Capacity	7.5 Litres	Width	482 mm
Max Air Flow	45 cu. ft/min	Depth	216 mm
Sealed Suction in Water	813 mm	Weight	4.2 kg



C18WL

Heavy Duty Work Light - Skin

XENON BULB MAXIMISE BRIGHTNESS OVER WORK AREAS

FEATURES

- Sealed, Aluminium Head, impact and weather resistant
- Incandescent Bulb maximises brightness over work areas
- Integrated Hook, hands-free use
- 135° Rotating Head
- Rubber over-mold front, rear and top grips

INCLUDES

Tool Only (Supplied in Carton)

SPECIFICATIONS

Bulb Type	Incandescent
Battery Type (not included)	3.0 / 1.5 Ah Li-ion
Charge Time	60 / 30 mins
Weight with battery pack	1.0 / 0.7 Kg



C18B1.5AH

1.5 Ah Lithium-ion Battery Pack

SUPERIOR PERFORMANCE AND RUN-TIME

FEATURES

- Increased run-time
- Digital Power Management
- Overload Protection
- Temperature Management System
- Discharge Protection
- Individual Cell Voltage Monitoring

INCLUDES

Battery Only (Supplied in Blister Pack)

SPECIFICATIONS

Battery Type	Lithium-ion
Amps	1.5 Ah
Charge Time	30 mins
Weight	0.4 kg



C18B3.0AH

3.0 Ah Lithium-ion Battery Pack

SUPERIOR PERFORMANCE AND RUN-TIME

FEATURES

- Increased run-time
- Digital Power Management
- Overload Protection
- Temperature Management System
- Discharge Protection
- Individual Cell Voltage Monitoring

INCLUDES

Battery Only (Supplied in Blister Pack)

SPECIFICATIONS

Battery Type	Lithium-ion
Amps	3.0 Ah
Charge Time	60 mins
Weight	0.7 kg



C18C

Battery Charger

STAY CHARGED ALL DAY

FEATURES

- 60 Minute Charger
- 1 Year Warranty
- Charges:
 - C18B1.5AH 1.5 Ah Li-ion Battery Pack, 18V
 - C18B3.0AH 3.0 Ah Li-ion Battery Pack, 18V

INCLUDES

Tool Only (Supplied in Carton)

SPECIFICATIONS

Battery Type (not included)	1.5 / 3.0 Ah Li-ion
Charge Time	30 / 60 mins
Weight with battery pack	0.80 / 1.1 kg
Warranty	1 year





THE LARGEST HIGH VOLTAGE LITHIUM-ION CORDLESS SYSTEM

When superior power and run-time is a necessity, the full line of Milwaukee® M28™ LITHIUM-ION cordless products will provide the performance of corded tools in a durable and reliable cordless package. The patented Digital Power Management (DPM) is the only system that will allow you to perform heavy duty applications without compromising durability or run-time.

V28PD-LI (Part Number 072437)

13 mm (1/2") Hammer Drill Driver

AWESOME POWER DELIVERING 80 NM OF TORQUE AND UP TO 27,000 BPM

FEATURES

- 28 Volt Power gives corded tool performance and maximum grunt
- Hammer mechanism delivers 27,000 BPM
- 2 Speed Metal Gear Box
- Powerful 80 Nm torque
- Comfortable non-slip, soft-grip handle

INCLUDES

2 x 3.0 Ah Li-ion Batteries, 28V Charger, Side Handle, #2 Phillips Bit, Belt Clip, Carry Case. Also available as tool only - **V28PD-SK (Part Number 072420)**

SPECIFICATIONS

No Load Speed	0 - 600 / 0 - 1800 rpm	Chuck Capacity	13 mm (1/2")
Torque	80 Nm	Clutch Settings	21 + 1
Percussion Rate	27000 BPM	Weight with battery pack	3.1 kg
Drill Capacity (steel/wood/stone)	16 / 65 / 20 mm		



V28H-LI (Part Number 075637)

3 Mode SDS-plus Rotary Hammer

HIGH POWER MOTOR DELIVERING CORDED TOOL RESULTS

FEATURES

- 28 Volt Power gives corded tool performance
- Metal Gear Box
- Three operating modes - rotary, drill and chisel
- Soft-grip handle and two finger reversible trigger
- L-shape design

INCLUDES

2 x 3.0 Ah Li-ion Batteries, 28V Charger, Side Handle, Metal Depth Gauge, Contractor Bag. Also available as tool only - **V28H-SK (Part Number 075620)**

SPECIFICATIONS

No Load Speed	0 - 1400 rpm	Drilling Capacity (concrete/stone)	26 mm
Blow rate (full load)	0 - 4700 BPM	Drilling Capacity (steel/wood)	13 / 30 mm
Blow energy	3.2 J	Drilling Diameter (core cutter)	68 mm
Chuck	SDS-plus	Weight with battery pack	4.1 kg



V28IW-LI (Part Number 077937)

1/2" Impact Wrench

SETTING THE STANDARDS FOR CORDLESS IMPACT WRENCHES

FEATURES

- Powerful Impact Mechanism
- Variable Speed: 0 - 1450 rpm, 0 - 2450 IPM
- Hanger Bracket with solid steel ring
- Magnesium Gearcase
- Comfortable non-slip, soft-grip surfaces

INCLUDES

2 x 3.0 Ah Li-ion Batteries, 28V Charger, Hanger Bracket, Solid Steel Ring, Carry Case. Also available as tool only - **V28IW-SK (Part Number 077920)**

SPECIFICATIONS

No Load Speed	0 - 1450 rpm	Weight with battery pack	4.1 kg
Impact Rate	0 - 2450 IPM		
Torque	440 Nm		
Tool Reception	1/2" (13 mm) Square Drive		





V28AG-LI1 (Part Number 5933000002)

115 mm (4-1/2") Angle Grinder

TRUE INDUSTRIAL CORDED POWER PERFORMANCE

FEATURES

- Powerful motor delivers 9000 rpm no load speed
- Overload protection
- Soft start enhances operation and improves gear life
- Large spindle lock and Tool free guard
- FIXTEC™ Flange Nut

INCLUDES

1 x 3.0 Ah Li-ion Battery, 28V Charger, Side Handle, Guard, FIXTEC™ Flange Nut, Carry Case. Also available as tool only - **V28AG-SK** (Part Number 4933401668)

SPECIFICATIONS

No Load Speed	9000 rpm	Spindle Lock	Yes
Disc diameter	115 mm	Handle Positions	2
Cutting Depth	28.4 mm	Weight with battery pack	2.8 kg
Spindle Thread	M14 x 2.0 mm		



V28CS-LI (Part Number 073037)

165 mm Circular Saw

THE ULTIMATE CIRCULAR SAW WITH CORDLESS CONVENIENCE

FEATURES

- Powerful 4200 rpm motor, exceptional cutting power
- Magnesium guards
- High strength aircraft aluminium shoe
- Tactile grips on both handles
- Fast acting electric brake and excellent visibility of cutting line

INCLUDES

2 x 3.0 Ah Li-ion Batteries, 28V Charger, 24 Tooth Blade, Hex Key, Rip Fence, Carry Case. Also available as tool only - **V28CS-SK** (Part Number 073020)

SPECIFICATIONS

No Load Speed	4200 rpm	Blade Size	165 mm
Cutting Depth at 90°	0 - 54 mm	Spindle Lock	Yes
Cutting Depth at 45°	0 - 39 mm	Weight with battery pack	4.3 kg
Arbor Size	16 mm		



V28JSB-0 (Part Number V28JSB-0)

Jigsaw - Skin

CORDLESS CONVENIENCE AND SUPER FAST CUTTING IN ALL MATERIALS

FEATURES

- 2 speed selector switch and 4 stage pendulum action
- Softstart Electronics for safe handling
- Die-cast base plate
- Adjustable sawdust blower and Anti-vibration mechanism
- FIXTEC™ blade clamp
- Tool free base plate adjustments with snap-in feature

INCLUDES

Tool Only (Supplied in Carry Case)

SPECIFICATIONS

No Load Stroke Rate	2100 / 2800 SPM	Stroke Length	26 mm
Bevel Capacity	45°	Weight with battery pack	3.5 kg
Pendulum Setting	4		
Cutting Depth (wood / steel)	135 / 10 mm		





V28BS-LI (Part Number 072937)

Bandsaw

FAST AND POWERFUL AS CORDED TOOL

FEATURES

- Convenient High / Low speed selector switch with lock
- Two finger variable speed switch
- Non-slip gripping surfaces
- Tool free blade changes
- Heavy Duty Construction
- Well balanced motor

INCLUDES

1 x 3.0 Ah Li-ion Battery, 28V Charger, Carry Case

SPECIFICATIONS

No Load Speed	0 - 70 / 0 - 110 m/min
Cutting Capacity rectangular stock (w x h)	125 mm x 135 mm
Blade Size	1140 x 13 x 0.5 mm



Weight with battery pack 8.9 kg

V28SX-LI (Part Number 071937)

Sawzall™ Reciprocating Saw

MOST POWERFUL CORDLESS SAWZALL™
DELIVERING ULTIMATE CUTTING PERFORMANCE

FEATURES

- 0 - 2000 / 0 - 3000 strokes per minute for metal or wood cutting
- Quik-Lok™ Blade Clamp
- Gear Protecting Clutch
- Tool free Shoe Adjustment
- Comfortable non-slip soft grip

INCLUDES

2 x 3.0 Ah Li-ion Batteries, 28V Charger, 2 x Sawzall™ Blade, Carry Case.

Also available as tool only - **V28SX-SK** (Part Number 071920)

SPECIFICATIONS

Stroke Rate (metal / wood)	0 - 2000 / 0 - 3000 SPM
Stroke Length	29 mm
Weight with battery pack	4.0 kg



COM-V28PD-V28AG (Part Number 4933401704)

2 Piece Kit

TOOLS

- V28PD - 13 mm (1/2") Hammer Drill Driver, 28V
Refer to page 18 for detailed specifications and features
- V28AG - 115 mm (4 1/2") Angle Grinder, 28V
Refer to page 19 for detailed specifications and features

INCLUDES

2 x 3.0 Ah Li-ion Batteries, 28V Charger, Side Handle, Belt Clip, #2 Phillips Bit, Carry Case



COM-V28PPG-LI (Part Number 082837)

3 Piece Kit

TOOLS

- V28PD - 13 mm (1/2") Hammer Drill Driver, 28V
Refer to page 18 for detailed specifications and features
- V28H - 3 Mode SDS-plus Rotary Hammer, 28V
Refer to page 18 for detailed specifications and features
- V28L - Work Light, 28V
Refer to page 22 for detailed specifications and features



INCLUDES

2 x 3.0 Ah Li-ion Batteries, 28V Charger, 2 x Side Handle, Metal Depth Gauge, #2 Phillips Bit, Belt Clip, Carry Bag

COM-V28PPB-LI (Part Number 092837)

4 Piece Kit

TOOLS

- V28PD - 13 mm (1/2") Hammer Drill Driver, 28V
Refer to page 18 for detailed specifications and features
- V28CS - Circular Saw, 28V
Refer to page 19 for detailed specifications and features
- V28SX - Sawzall™ Reciprocating Saw, 28V
Refer to page 20 for details
- V28L-SK - Work Light, 28V
Refer to page 22 for detailed specifications and features



INCLUDES

2 x 3.0 Ah Li-ion Batteries, 28V Charger, Side Handle, Metal Depth Gauge, #2 Phillips Bit, Belt Clip, Carry Bag

COM-V28PPB-V28AG (Part Number 5933000001)

5 Piece Kit

TOOLS

- V28PD - 13 mm (1/2") Hammer Drill Driver, 28V
Refer to page 18 for detailed specifications and features
- V28AG - 115mm (4 1/2") Angle Grinder, 28V
Refer to page 19 for detailed specifications and features
- V28CS - Circular Saw, 28V
Refer to page 19 for detailed specifications and features
- V28SX - Sawzall™ Reciprocating Saw, 28V
Refer to page 20 for detailed specifications and features
- V28L - Work Light, 28V
Refer to page 22 for detailed specifications and features



INCLUDES

2 x 3.0 Ah Li-ion Batteries, 28V Charger, Side Handle, #2 Phillips Bit, Guard, FIXTEC™ Flange Nut, 24 Tooth Blade, 2 x Sawzall™ Blade, Belt Clip, Carry Case

C12-28DCR-O

Jobsite Radio

AWESOME SOUND QUALITY AND JOBSITE DURABILITY

- Refer to page 16 for detailed specifications and features



SPECIFICATIONS

Amplifier	40 Watts	Auxiliary Input	3.5 mm Stereo Jack
Speakers	4" High Performance Poly	Bottle Opener / Cord Wrap	Yes
Digital Display	Yes	Dimensions	495 x 241 x 279 mm
Equaliser	Customisable (Base & Treble)	Weight with battery pack	8.0 kg

V28VC-0 (Part Number V28VC-0)

Heavy Duty Vacuum Cleaner / Blower - Skin

HEAVY DUTY DEBRIS AND WET EXTRACTION IN A CORDLESS PLATFORM

FEATURES

- Strong Air Power and Suction
- Washable, reusable wet/dry filter
- Stackable toolbox design
- Convenient onboard hose and accessory storage
- Build-in Blower Port
- Allows standard vacuum attachments to be fastened

INCLUDES

Tool Only (Supplied in Carton), Crevice Tool, Wide Nozzle, Filter, Hose

SPECIFICATIONS

Material	Wet / Dry	Height	292 mm
Capacity	7.5 Litres	Weight	482 mm
Max Air Flow	45 cu. ft/min	Depth	216 mm
Sealed Suction in Water	813 mm	Weight with battery pack	4.2 kg



V28L-SK (Part Number 49240185)

Torch - Skin

ILLUMINATE LARGE AREAS ENSURING SAFETY

FEATURES

- 140° Swivel Head provides floor to ceiling illumination
- Faceted reflector for bright, uniform light beam
- Recessed switch eliminates accidental actuation/battery drain
- Non-slip gripping surfaces
- Slimline Handle

INCLUDES

Tool Only (Supplied in Carton)

SPECIFICATIONS

Bulb Type	Incandescent
Battery Type (not included)	3.0 Ah Li-ion
Weight with battery pack	1.6 kg



V28B (Part Number 48112830)

3.0 Ah Lithium-ion Battery Pack

SUPERIOR PERFORMANCE AND RUN-TIME

FEATURES

- Increased run time and lighter than 18V NiCd Battery
- Consistent fade-free power
- Can be charged regardless of current charge level
- Born-on-date and performance optimising circuit
- Non-slip grip surface
- Eco-friendly

INCLUDES

Tool Only (Supplied in Blister Pack)

SPECIFICATIONS

Battery Type	Lithium-ion
Amps	3.0 Ah
Weight	1 kg



V28C (Part Number 48592812)

Battery Charger - Skin

STAY CHARGED ALL DAY

FEATURES

- 60 Minute Charger
- 1 Year Warranty
- Charges:
V28B - 3.0 Ah Li-ion Battery Pack, 28V

INCLUDES

Tool Only (Supplied in Carton)

SPECIFICATIONS

Battery Type (not included)	3.0 Ah Li-ion
Weight with battery pack	1.5 kg
Warranty	1 year





V28



WHAT LEGENDS ARE MADE OF...

Milwaukee Electric Tools offers a full range of corded power tools, designed with the professional contractor in mind. From our legendary SAWZALL® Recip Saw to our ultra-portable band saws, you can count on Milwaukee® for reliable, long-lasting performance to handle the day-in, day-out demands of the toughest job sites.

PD2E20R/S (Part Number 4933380006)

13 mm Hammer Drill, 705W

A 'MUST-HAVE' STAPLE FOR PROFESSIONAL PLUMBERS AND ELECTRICIANS

FEATURES

- 2-speed synchromesh gears, can be changed both when stationary and at no load speed
- Fully insulated metal end plate
- Preselection of speed via dial control to suit application
- Keyless Chuck
- Softgrip and ergonomic handle design

INCLUDES

Depth Gauge, Side Handle, Carry Case

SPECIFICATIONS

Power Input	705 Watt	Drill Capacity (concrete/stone/steel/wood)	20 / 20 / 13 / 40mm
No Load Speed 1st / 2nd gear	0-1350 / 0-3200 rpm	Chuck / Chuck Type	13 mm / Keyless
Full Load Speed 1st / 2nd gear	0-750 / 0-1850 rpm	Handle Positions	360° Locking
Torque 1st / 2nd gear	50 / 25 Nm	Weight	2.7 kg



PD2E24RS (Part Number 4933390200)

13 mm Hammer Drill, 1010W

PACKED WITH FEATURES TO TACKLE ANY JOB

FEATURES

- Powerful 1010 watt motor
- AVS Anti-Vibration System
- 2-speed synchromesh gears
- Preselection of speed via dial control to suit application
- Metal Gear Case and Safety Clutch
- No Load Speed limitation

INCLUDES

Depth Gauge, Carry Case

SPECIFICATIONS

Power Input	1010 Watt	Drill Capacity (concrete/stone/steel/wood)	20 / 24 / 16 / 40mm
No Load Speed 1st / 2nd gear	0-1450 / 0-3400 rpm	Chuck / Chuck Type	13 mm / Keyless
Full Load Speed 1st / 2nd gear	0-980 / 0-2300 rpm	Handle Positions	360° Locking
Torque 1st / 2nd gear	54 / 30 Nm	Weight	3.0 kg



T-TEC201 (Part Number 4933372995)

13 mm Hammer Drill, 750W

FOR COMPLETE CONTROL OVER A WIDE RANGE OF INDUSTRIAL DRILLING APPLICATIONS

FEATURES

- Fully insulated metal end plate
- Electronics with variable speed and hammer rate via integrated wheel in switch
- 2-speed synchromesh gears
- Reversible action
- Keyless chuck

INCLUDES

Depth Gauge, Carry Case

SPECIFICATIONS

Power Input	750 Watt	Drill Capacity (concrete/stone/steel/wood)	20 / 22 / 13 / 40mm
No Load Speed 1st / 2nd gear	0-1200 / 0-3400 rpm	Chuck / Chuck Type	13 mm / Keyless
Full Load Speed 1st / 2nd gear	0-750 / 0-2200 rpm	Cable Length	4 m
Torque 1st / 2nd gear	58 / 30 Nm	Weight	2.7 kg





HDE13RQX (Part Number 030250)

13 mm Drill, 950W

BEST POWER-TO-WEIGHT RATIO, PERFORMANCE & TORQUE IN LIGHTWEIGHT DESIGN

FEATURES

- Powerful 950 watt motor, 0 - 850 rpm, variable speed control
- FIXTEC™ Automatic Spindle Lock
- Lightweight and powerful, delivers 94 Nm torque
- Metal Gear Case
- Ergonomic tactile grip and two finger trigger
- Softgrip and ergonomic handle design

INCLUDES

(Supplied in Carton), 4 m Quik-Lok™ Cable, Side Handle

SPECIFICATIONS

Power Input	950 Watt	Drill Capacity (steel/aluminium/wood)	13 / 20 / 38 mm
No Load Speed	0 - 850 rpm	Chuck / Chuck Type	13 mm / Keyless Metal
Full Load Speed	0 - 525 rpm	Handle Positions	360° Locking
Torque	94 Nm	Weight	2.0 kg



HDE13RQD (Part Number 110750)

13 mm Drill, 825W

SUPERIOR DRILLING PERFORMANCE, INNOVATIVE FEATURES AND MILWAUKEE'S LEGENDARY DURABILITY

FEATURES

- 825 watt motor with heat treated metal gears
- Powerful 101 Nm torque
- Trigger speed control: 0 - 500 rpm, reverse action
- Quik-Lok™ Cable

INCLUDES

4 m Quik-Lok™ Cable, Gear Chuck & Key, Side Handle, Carry Case

SPECIFICATIONS

Power Input	825 Watt	Drill Capacity (steel/aluminium/wood)	13 / 20 / 38 mm
No Load Speed	0 - 500 rpm	Chuck / Chuck Type	13 mm / Keyed
Full Load Speed	0 - 355 rpm	Handle Positions	2
Torque	101 Nm	Weight	3.2 kg



B4-32 (Part Number 4933380519)

32 mm Morse Taper Drill MK 3 mm, 1050W

SOLID PERFORMER FOR EXTRA LARGE DRILLING APPLICATIONS

FEATURES

- Powerful 200 Nm torque
- 4-speed gearbox, precise speed adaptation
- Cone spindle with morse taper
- Cross-handle and breast plate
- Suitable for stationary application with magnetic drill stand

INCLUDES

(Supplied in Carton), Drift Key

SPECIFICATIONS

Power Input	1050 Watt	Drill Capacity (steel/aluminium/wood)	32 / 64 / 52 mm
No Load Speed (1st/2nd/3rd/4th gear)	220/260/350/420 rpm	Tool Reception	MK 3 mm
Full Load Speed (1st/2nd/3rd/4th gear)	115/160/190/260 rpm	Chuck Type	Morse taper 3
Torque	200 Nm	Weight	9.7 kg



DCM2-250C (Part Number 40964)

254 mm Diamond Core Motor, 2800W

HIGH PRECISION AND ACCURACY DRILLING HOLES INTO REINFORCED CONCRETE

FEATURES

- Internal slip clutch and Soft start switch
- Motor overload protection
- PRCD residual current device
- Built-in water swivel
- Dual-mount switch box
- Triple reduction gearing

INCLUDES

(Supplied in Carton), Open End Wrench, Hex Keys, Strap with Switch Box

SPECIFICATIONS

Power Input	2800 Watt	Spindle Diameter in threads	1.25" x 7
Revolutions low / high	450 / 900 rpm	Cable Length	4 m
Coring Capacity low	152 - 254 mm	Weight	9.0 kg
Coring Capacity high	51 - 152 mm		



DCM2-180C (Part Number 40054)

178 mm Diamond Core Motor, 2800W

HIGH SPEED CORE DRILLING UP TO 178 MM DIAMETER

FEATURES

- 2-speed diamond core cutting
- Internal slip clutch and Soft start switch
- Triple-reduction gearing
- Motor overload protection
- PRCD residual current device
- Built-in water swivel and Dual-mount switch box

INCLUDES

(Supplied in Carton), Open End Wrench, Hex Keys, Strap with Switch Box

SPECIFICATIONS

Power Input	2800 Watt	Spindle Diameter in threads	1.25" x 7
Revolutions low / high	600 / 1200 rpm	Cable Length	4 m
Coring Capacity low	102 - 178 mm	Weight	9.0 kg
Coring Capacity high	20 - 102 mm		



PH26

SDS-plus Rotary Hammer, 725W

TOUGH, DURABLE HAMMER, EXCELLENT DRILLING PERFORMANCE

FEATURES

- 26 mm SDS Plus 3 Mode
- Slimline design and Super low Vibration
- Integrated metal block technology
- Features rotation stop and vario lock for chiselling
- Safety Clutch, user safety and tool protection
- 3 Mode Functionality

INCLUDES

Depth Gauge, Side Handle, Carry Case

SPECIFICATIONS

Power Input	725 Watt	Drilling Capacity (concrete/wood/steel)	26 / 30 / 13 mm
Full Load Speed	0 - 1500 rpm	Vibration Level (3 - axis)	13.5 m/s ²
Blow Rate (full-load)	0 - 4500 BPM	Chuck	SDS Plus
Blow Energy	2.9 J	Weight	2.4 kg



PFH26

SDS-plus Rotary Hammer, 725W

TOUGH, DURABLE HAMMER, EXCELLENT DRILLING LIGHTWEIGHT PERFORMANCE

FEATURES

- 26 mm SDS Plus 2 Mode
- Slimline design
- Integrated metal block technology
- Super low Vibration
- Safety Clutch, user safety and tool protection
- 2 Mode Functionality

INCLUDES

Depth Gauge, Side Handle, Carry Case

SPECIFICATIONS

Power Input	725 Watt	Drilling Capacity (concrete/wood/steel)	26 / 30 / 13 mm
Full Load Speed	0 - 1500 rpm	Vibration Level (3 - axis)	13.5 m/s ²
Blow Rate (full-load)	0 - 4500 BPM	Chuck	SDS Plus
Blow Energy	2.9 J	Weight	2.4 kg



PH28

SDS-plus 3 Mode Rotary Hammer, 820W

TOUGH, DURABLE HAMMER, EXCELLENT DRILLING PERFORMANCE

FEATURES

- 28 mm SDS Plus 3 Mode
- Over sized heavy weight striker
- Slimline design, great handling in tight situations
- Super low Vibration and Safety Clutch
- Greatest durability in class
- 3 Mode Functionality

INCLUDES

Depth Gauge, Side Handle, Carry Case

SPECIFICATIONS

Power Input	820 Watt	Drilling Capacity (concrete/wood/steel)	28 / 30 / 13 mm
Full Load Speed	0 - 1250 rpm	Vibration Level (3 - axis)	14.5 m/s ²
Blow Rate (full-load)	0 - 4000 BPM	Chuck	SDS Plus
Blow Energy	3.3 J	Weight	2.7 kg



PH30POWERX

SDS-plus 3 Mode Rotary Hammer, 1030W

BIG CAPACITY, BIG POWER, BIG VERSATILITY

FEATURES

- 30 mm SDS Plus 3 Mode
- Over sized heavy weight striker
- FIXTEC™ SDS Plus and 13 mm keyless Chuck
- Super low Vibration and Reduced blow energy function
- Integrated metal block technology
- Thermal motor cut off and Safety Clutch

INCLUDES

Depth Gauge, Side Handle, Carry Case

SPECIFICATIONS

Power Input	1030 Watt	Drilling Capacity (concrete/wood/steel)	30 / 40 / 13 mm
Full Load Speed	0 - 1100 rpm	Vibration Level (3 - axis)	14.5 m / 5 ²
Blow Rate (full-load)	0 - 3800 BPM	Chuck	SDS Plus
Blow Energy	3.5 J	Weight	3.0 kg



PFH25QE (Part Number 4933396205)

2.5 Kg 2 Mode SDS-plus Rotary Hammer, 680W

COMPACT SIZE BUT HEAVY DUTY

FEATURES

- Fixing Hammer
- Ergonomic design, Softgrip rubber-padded rear handle
- Rotation only function
- Reliable Slip Clutch protects tool and user
- Well positioned switches for variable speed and reverse operations

INCLUDES

4 m Quik-Lok™ Cable, Depth Gauge, Side Handle, Carry Case

SPECIFICATIONS

Power Input	680 Watt	Drill Capacity (concrete/wood/steel)	25 / 30 / 13 mm
Full Load Speed	0 - 900 rpm	Chuck	SDS-plus
Blow Rate (full-load)	0 - 3800 BPM	Modes	2
Blow Energy	2.9 J	Weight	2.5 kg



PLH26QE (Part Number 4933392626)

2.9 Kg 3 MODE SDS-plus Rotary Hammer, 770W

HARD HITTING, BEST POWER-TO-WEIGHT IN ITS CLASS

FEATURES

- 26 mm SDS-plus electric pneumatic hammer with chisel function
- Tough durable hammer
- Compact 'L shape'
- Heavy-Duty magnesium gear casing
- Soft-hammer mode and Reliable Slip Clutch
- Anti-Vibration-System and Softgrip Handle

INCLUDES

4 m Quik-Lok™ Cable, Depth Gauge, Side Handle, Carry Case

SPECIFICATIONS

Power Input	770 Watt	Drill Capacity (concrete/stone/wood/steel)	26 / 26 / 30 / 13 mm
Full Load Speed	0 - 1050 rpm	Chuck	SDS-plus
Blow Rate (full-load)	0 - 4500 BPM	Modes	3
Blow Energy	3.3 J	Weight	2.9 kg



PPH26XE (Part Number 4933382385)

3.0 Kg 3 Mode SDS-plus Rotary Hammer, 800W

TOUGH, DURABLE HAMMER, EXCELLENT DRILLING PERFORMANCE IN CONCRETE

FEATURES

- High torque motor and 3.0 joule single blow energy
- Roto-Stop function for occasional light chiselling
- Angle of chisels can be set through the variable locking system
- Anti-Vibration-System
- Softgrip Handle
- Reliable Slip Clutch protects tool and user

INCLUDES

SDS-plus Chuck, Adapter with Keyed Chuck, Depth Gauge, Side Handle, Carry Case

SPECIFICATIONS

Power Input	800 Watt	Drill Capacity (concrete/wood/steel/core)	26 / 40 / 18 / 82 mm
Full Load Speed	0 - 700 rpm	Chuck	SDS-plus
Blow Rate (full-load)	0 - 4000 BPM	Modes	3
Blow Energy	3.0 J	Weight	3.0 kg



PLH32QEX (Part Number 4933400077)

3.6 Kg 3 Mode SDS-plus Rotary Hammer, 900W

TOUGH, DURABLE HAMMER, EXCELLENT DRILLING PERFORMANCE

FEATURES

- 32 mm SDS-plus FIXTEC™ Electro Pneumatic Hammer
- High torque motor and 3.8 joule single blow energy
- Compact 'L shape'
- Anti-Vibration-System and Softgrip Handle
- Heavy-Duty magnesium gear casing

INCLUDES

4 m Quik-Lok™ Cable, Depth Gauge, FIXTEC™ SDS Adapter, FIXTEC™ 13 mm Keyless Chuck, Side Handle, Carry Case

SPECIFICATIONS

Power Input	900 Watt	Drill Capacity (concrete/wood/steel/core)	32 / 40 / 16 / 82 mm
Full Load Speed	0 - 800 rpm	Chuck	SDS-plus
Blow Rate (full-load)	0 - 4500 BPM	Modes	3
Blow Energy	3.8 J	Weight	3.6 kg



KANG0545S (Part Number 4933398200)

6.7 Kg 2 Mode SDS-max Rotary Hammer, 1300W

HARD HITTING AND FAST DRILLING

FEATURES

- Anti-Vibration-System
- Soft-hammer mode
- Softstart and Constant Electronics
- No load speed limitation
- Softgrip Handle and Safety Clutch
- Metal Gear Box and Service Hatch

INCLUDES

Dust Shield, Grease, Depth Gauge, Side Handle, Carry Case

SPECIFICATIONS

Power Input	1300 Watt	Blow Rate (full-load)	2840 BPM
Full Load Speed	450 rpm	- Soft hammer mode (full-load)	2200 BPM
- Soft hammer mode	350 rpm	Drilling Diameter (solid bit / tunnel bit)	45 / 65 mm
Blow Energy	14 J	Weight	6.2 kg



KANG0950K (Part Number 4933375680)

11.8 Kg 2 Mode K-Hex Rotary Hammer, 1700W

DELIVERS SPEED AND DURABILITY, USER FRIENDLY AND SUPERIOR SERVICE LIFE

FEATURES

- Ideal for usage with generators
- DIGITRONIC®-fullwave electronics
- 2 handles all with Anti-Vibration System and Softgrip
- In-line motor design
- Automatic lubrication system and Safety Clutch
- Fibre glass reinforced polyamide housing with metal gear box

INCLUDES

Dust Shield, Grease, D Handle, Side Handle, Carry Case

SPECIFICATIONS

Power Input	1700 Watt	Drilling Diameter solid bit	28 - 50 mm
Full Load Speed	125 - 250 rpm	Drilling Diameter tunnel bit	50 - 80 mm
Full Load Hammer Action	975 - 1950 BPM	Drilling Diameter with core	45 - 150 mm
Blow Energy	27 J	Weight	11.8 kg



KANGO950S (Part Number 4933375792)

11.8 Kg 2 Mode SDS-max Rotary Hammer, 1700W

DRILLS ANCHOR HOLES IN CONCRETE, LARGE CLEARANCE HOLES, DEMOLITION WORK & GROUND ROD DRIVING

FEATURES

- Ideal for usage with generators
- DIGITRONIC®-fullwave electronics
- 2 handles all with Anti-Vibration System and Softgrip
- In-line motor design
- Automatic lubrication system and Safety Clutch
- Fibre glass reinforced polyamide housing with metal gear box

INCLUDES

Dust Shield, Grease, D Handle, Side Handle, Carry Case

SPECIFICATIONS

Power Input	1700 Watt	Drilling Diameter solid bit	28 - 50 mm
Full Load Speed	125 - 250 rpm	Drilling Diameter tunnel bit	50 - 80 mm
Full Load Hammer Action	975 - 1950 BPM	Drilling Diameter with core	45 - 150 mm
Blow Energy	27 J	Weight	11.8 kg



KANGO900K (Part Number 4933375690)

11.0 Kg K-Hex Demolition Breaker, 1600W

GREATER ERGONOMICS, HIGH PERFORMANCE, DESIGNED AND BUILT FOR SUPERIOR DURABILITY

FEATURES

- Ideal for usage with generators
- DIGITRONIC®-fullwave electronics
- 2 handles all with Anti-Vibration System and Softgrip
- In-line motor design
- Automatic lubrication system
- Fibre glass reinforced polyamide housing with metal gear box

INCLUDES

Dust Shield, Grease, D Handle, Side Handle, Carry Case

SPECIFICATIONS

Power Input	1600 Watt	Modes	Demolition
Blot Rate under load	975 - 1950 BPM	Side Handle	Side Handle / D Handle
Blow Energy	27 J	Handle Positions	360° Locking / 2
Chuck	21 mm K Hex	Weight	11.0 kg



TKSE2500Q (Part Number 679050)

1/4" Screwgun, 725W

POWERFUL HIGH TORQUE SCREWDRIVER

FEATURES

- Combination deck and drywall gun
- Powerful 725 watt motor, 0 - 2500 rpm, variable speed control
- Self-drilling fastener screwdriver with 25 Nm torque for tapping screws
- Adjustable, accurate 'snap-on' depth setting nose
- Quiet snap-action clutch
- Metal gear case and diaphragm and Ergonomic tactile grip

INCLUDES

(Supplied in Carton), 4 m Quik-Lok™ Cable, Bit Holder, Belt Clip, 2 x Phillips Bits

SPECIFICATIONS

Power Input	725 Watt	Working Radius	23 mm
Drilling Speed (Full Load)	0 - 2500 rpm	Self-tapping / wood screws	6.5 / 6 mm
Torque	25 Nm	Self-tapping / wood screws	0 - 2500 1/min
Drive Size	1/4" (6.35 mm)	Weight	1.4 kg



DWSE4000Q (Part Number 674350)

Drywall Screwgun, 725W

ULTRA FAST FIX DRYWALL SCREWDRIVER WITH QUALITY DUST SEALS FOR DURABILITY

FEATURES

- Powerful 725 watt motor, 0 - 4000 rpm, variable speed control
- High-speed screwdriver for fast screwdriving in series, 20 Nm torque
- Ramp-off depth locator for easy depth adjustments
- Adjustable, accurate 'snap-on' depth setting nose
- Quiet snap-action clutch
- All metal gear case and diaphragm and Ergonomic tactile grip

INCLUDES

(Supplied in Carton), 4 m Quik-Lok™ Cable, Bit Holder, Belt Clip

SPECIFICATIONS

Power Input	725 Watt	Drive Size	6.35 mm
No Load Speed	0 - 4000 rpm	Working Radius	23 mm
Drilling Speed (Full Load)	0 - 2600 rpm	Self-tapping / wood screws	0 - 4000 1 / min
Torque Hard/Soft	20 Nm	Weight	1.3 kg



IPWE520RQ (Part Number 907650)

3/4" Impact Wrench, 725W

HUGE 520 NM OF TORQUE CAPACITY FOR LARGE CONSTRUCTION AND PLANT MECHANICAL APPLICATIONS

FEATURES

- Powerful 725 watt motor, 1700 rpm and 2500 IPM (no load)
- Delivers up to 520 Nm torque
- 3/4" Square Drive
- Electronic variable speed with speed dial
- Lightweight and balanced, reduced user fatigue
- Softgrip and ergonomic handle design, comfortable handling

INCLUDES

(Supplied in Carton), 4 m Quik-Lok™ Cable

SPECIFICATIONS

Power Input	725 Watt	Tool Reception	19.05 mm (3/4")
No Load Speed	0 - 1700 rpm	Recommended Bolt Range	M16 - M24
Impact Rate / min	1000 - 2500 IPM	Cable Length	4 m Quik-Lok™
Torque	520 Nm	Weight	2.8 kg



IPWE400RQ (Part Number 907250)

1/2" Impact Wrench, 725W

DELIVERING AN IMPRESSIVE 400 NM OF TORQUE WITH EXCELLENT CONTROL FEATURES

FEATURES

- Powerful 725 watt motor, 1700 rpm and 2600 IPM (no load)
- Delivers up to 400 Nm torque
- 1/2" Drive with Detent Pin, securely retain sockets and adapters
- Electronic variable speed with speed dial
- Lightweight and balanced
- Softgrip and ergonomic handle design

INCLUDES

(Supplied in Carton), 4 m Quik-Lok™ Cable

SPECIFICATIONS

Power Input	725 Watt	Tool Reception	13 mm (1/2")
No Load Speed	0 - 1700 rpm	Recommended Bolt Range	M12 - M20
Impact Rate / min	1000 - 2600 IPM	Cable length	4 m Quik-Lok™
Torque Hard / Soft	400 Nm	Weight	2.7 kg



SCS65Q (Part Number 638051)

190 mm Circular Saw, 1900W

ENGINEERED TO THE MAX WITH EXCEPTIONAL CUTTING PERFORMANCE

FEATURES

- Sturdy 1900 watt motor
- Unique Swing-Grip Adjustable Handle
- Protection Guard with optimum sawdust extraction up to 90%
- Adapter for sawdust bag or external extraction
- Lightweight yet powerful and robust, 65mm depth
- Heavy Duty design and Quik-Lok™ Cable

INCLUDES

(Supplied in Carton), 4 m Quik-Lok™ Cable, 190 mm 20 tooth blade, Parallel Guide, Spanner

SPECIFICATIONS

Power Input	1900 Watt	Blade Size	190 mm
No Load Speed	5800 rpm	Cable Length	4 m Quik-Lok™
Cutting Depth	65 / 52 mm	Weight	5.5 kg
Arbor Size	30 mm		



FSPE110QX (Part Number 4933357990)

Body Grip Jigsaw, 710W

HEAVY DUTY, EXCELLENT CUTTING AND LONGER SAW BLADE LIFE

FEATURES

- Pendulum Action with 4 adjustments levels for faster cutting
- Electronics for variable speed preselection
- FIXTEC™ base plate adjustment system and angle-setting
- FIXTEC™ Keyless Blade Change System
- Die cast aluminium base plate and metal gear case

INCLUDES

4 m Quik-Lok™ Cable, Anti-splintering Device, Sliding Shoe, Absorption Adapter, 5 x Saw Blades, Carry Case

SPECIFICATIONS

Power Input	710 Watt	Cutting Depth (wood / aluminium)	120 / 30 mm
No Load Stroke Rate	500 - 3000 rpm	Cutting Depth (metal / steel / ceramics)	20 / 10 / 10 mm
Pendulum Settings	4	Mitre Cutting Angle to	45°
Stroke	26 mm	Weight	2.5 kg



JSPE135TX (Part Number JSPE135TX)

Top Handle Jigsaw, 750W

ROBUST AND POWERFUL TOP HANDLE JIGSAW

FEATURES

- Robust and powerful 750 watt motor
- Excellent power / weight ratio, only 2.5 Kg
- LED Light
- Anti-vibration technology and soft grip
- Precision Blade Guidance
- FITTEC™ Keyless Blade Change System

INCLUDES

4 m Quik-Lok™ Cable, Carry Case

SPECIFICATIONS

Power Input	750 Watt	Cutting Depth (steel)	10 mm
No Load Stroke Rate	800 - 3000 rpm	Mitre Cutting Angle to	45°
Stroke Length	26 mm	Cable Length	4 m Quik-Lok™
Cutting Depth (wood / aluminium)	135 / 30 mm	Weight	2.5 kg



MS305DB (Part Number MS305DB)

12" (305 mm) Slide Compound Mitre Saw, 1800W

POWERFULLY ROBUST AND ACCURATE FOR TOUGH AND DETAIL WORK FEATURING DIGITAL READOUT

FEATURES

- 1800 watt Direct Drive Motor, maximum power for high performance cutting in hardwood materials
- Constant Torque Electronics with Soft Start, constant speed and power under load and decreases start up head movement
- Digital readout to 0.1°, repeatable accuracy
- Mitre Angle Fine Adjust with Detent Override, easy to dial-in precise mitre angles
- Single Lever Bevel Adjustment, fast and accurate bevel adjustment
- Dual Integral Jobsite Lights, fully illuminate work area and cut line from either side of the blade
- Integral Dust Channel captures 75% of all dust and debris cut, added convenience
- Dual Horizontal Steel Rails with three large linear bearing, smooth sliding action
- Oversized Single Lever Bevel Adjustment with 9 positive bevel stops, fast and accurate bevel adjustment
- Inline Motor Design, excellent visibility from both sides to work area and better balanced

INCLUDES

(Supplied in Carton), 60 tooth Blade, Material Clamp, Spanner, Dust Bag

SPECIFICATIONS

Power Input	1800 Watt	90° Crosscut Max	H 115 mm x W 342 mm
No Load Speed	3200 rpm	45° Mitre Max	H 115 mm x W 241 mm
Blade Diameter	305 mm	Mitre Range	52° Left to 52° Right
Arbor Size	15 / 25 mm	Bevel Range	48° Left to 48° Right



MSL3000 (Part Number MSL3000)

Mitre Saw Stand

LIGHTWEIGHT, PORTABLE AND DURABLE

FEATURES

- Material Supports with Steel Rollers
- 250 Kg Table Area Weight Capacity
- Rubber Wheels, Collapsible and Adjustable Legs
- 81 cm working height
- Quick to assemble, set up within seconds
- Compatible with most 10" and 12" Mitre Saws

INCLUDES

(Supplied in Carton)

SPECIFICATIONS

Bearing Force	250 kg	Folds Down to	1200 mm
Height	8100 mm	Weight	23 kg
Base Length	1100 mm		
Extendable up to	3000 mm		



SSE1000QX (Part Number 652851)

32 mm Sawzall™ Reciprocating Saw, 1000W

IDEAL FOR HEAVY CONSTRUCTION TRADE APPLICATIONS

FEATURES

- Powerful 1000 watt motor
- AVS Anti-vibration Design
- Adjustable Depth Guide
- Fully insulated Metal Gear Box with non-slip rubber boot
- Variable Speed Pre-selection of stroke rate
- Impact Protection System and Automatic cut-off carbon brushes

INCLUDES

4 m Quik-Lok™ Cable, 2 x Sawzall™ Blades, Carry Case

SPECIFICATIONS

Power Input	1000 Watt	Weight	3.7 kg
No Load Stroke Rate	0 - 2800 SPM		
Stroke Length	32 mm		
Cable Length	4 m		



SSPE1300QX (Part Number SSPE1300QX)

32mm Sawzall™ Reciprocating Saw, 1300W

BULLET PROOF DESIGN WITH USER FRIENDLY FEATURES FOR THE TOUGHEST JOB APPLICATIONS

FEATURES

- Powerful 1300 watt motor
- AVS Anti-vibration Design
- Keyless Adjustable Depth Guide
- FIXTEC™ Keyless Blade Change System
- Gear Protection System
- Continuously adjustable orbital action

INCLUDES

4 m Quik-Lok™ Cable, 2 x Sawzall™ Blades, Carry Case

SPECIFICATIONS

Power Input	1300 Watt	Weight	4.2 kg
No Load Stroke Rate	0 - 3000 SPM		
Stroke Length	32 mm		
Cable Length	4 m Quik-Lok™		



DG30QE (Part Number 4933385100)

6 mm Die Grinder, 500W

LOW WEIGHT AND GOOD BALANCE FOR EASY HANDLING

FEATURES

- Variable speed, complete user control
- Softstart Electronics, precise start of grinding
- Short and compact design, one-handed grinding
- Suitable for stationary use, using the 43mm spindle neck
- Cut-off carbon brushes and Metal Gear Box
- Lightweight and balanced

INCLUDES

(Supplied in Carton) , 4 m Quik-Lok™ Cable, Spanner SW 17 / SW 15, Collet

SPECIFICATIONS

Power Input	500 Watt	Grinding Pin Diameter max	20 mm (at 45 m / sec)
No Load Speed	10000 - 30000 rpm	Cable Length	4 m Quik-Lok™
Collet Diameter	6 mm (1/4") + 8 mm	Weight	1.3 kg
Grinding Wheel Diameter max	40 mm (at 80 m / sec)		



DGL30QE (Part Number 4933385120)

6 mm Die Grinder, 600W

EXTENDED SPINDLE ENABLING EASY ACCESS TO AWKWARD SPOTS

FEATURES

- Variable speed, complete user control
- Softstart Electronics, precise start of grinding and maximum safety
- Cut-off Carbon Brushes, protect motor commutator from damage
- Long spindle, easy access of awkward places
- Electronic speed control, extra high speed 30,000 rpm
- Precision Metal Gear Box with double bearing setting of spindle

INCLUDES

(Supplied in Carton), 4 m Quik-Lok™ Cable, Spanner SW 17 / SW 15, Collet

SPECIFICATIONS

Power Input	600 Watt	Grinding Pin Diameter max	20 mm (at 45 m / sec)
No Load Speed	10000 - 30000 rpm	Cable Length	4 m Quik-Lok™
Collet Diameter	6 mm (1/4")	Weight	1.9 kg
Grinding Wheel Diameter max	40 mm (at 80 m / sec)		



SG6-125QX (Part Number 522350)

125 mm Straight Grinder, 1300W

COMFORTABLE TO HOLD WHILE DELIVERING A FULL 1300W OF POWER AND 6500 RPM

FEATURES

- Powerful 1300 watt straight grinder
- Insulated Gearbox, cool gripping surface
- High impact resistant tool rest
- FIXTEC™ Flange Nut
- Quik-Lok™ Cable

INCLUDES

(Supplied in Carton), 4 m Quik-Lok™ Cable, Spanner, FIXTEC™ Flange Nut

SPECIFICATIONS

Power Input	1300 Watt	Wheel Thickness max	25 mm
No Load Speed	6500 rpm	Spindle Thread	M14
Bore Size	20 mm	Cable Length	4 m Quik-Lok™
Grinding Wheel Diameter max	125 mm (at 80 m / sec)	Weight	4.7 kg



WCE30-O (Part Number 4933383010)

125 mm Wall Chaser, 1500W

PERFORMANCE AND DURABILITY IN A COMPACT DESIGN FOR MASONRY ELECTRICAL CONDUIT INSTALLATION

FEATURES

- Powerful 1500 watt motor
- The cutting width between the two parallel diamond cutting discs can be set with the new design stepless adjustment
- High Performance Electronics with overload protection
- In line dust extraction connection
- Spindle Lock

INCLUDES

Special Chisel, Side Handle, Keys, Carry Case

SPECIFICATIONS

Power Input	1500 Watt	Disc Diameter	125 mm
No Load Speed	9500 rpm	Spindle Thread	M14
Cutting Width	15 - 26 mm	Cable Length	4 m
Cutting Depth	8 - 30 mm	Weight	4.3 kg



WCS45 (Part Number 4933383350)

150 mm Wall Chaser, 1900W

HARD WEARING DUSTPROOF, ERGONOMICAL DESIGN

FEATURES

- Sturdy 1900 watt motor with large power reserves
- The cutting width between the two parallel diamond cutting discs can be set with the new design stepless adjustment
- Unique Swing-Grip Adjustable Handle
- Four Roller, smooth guide operation and surface movement
- Dust extraction connection and Spindle Lock

INCLUDES

150 mm Diamond Wheels, Special Chisel, Side Handle, Keys, Carry Case

SPECIFICATIONS

Power Input	1900 Watt	Disc Diameter	150 mm
No Load Speed	5800 rpm	Spindle Thread	M14
Cutting Width	6 - 45 mm	Cable Length	4 m
Cutting Depth	17 - 45 mm	Weight	6.6 kg



WCE65/O (Part Number 4933385125)

230 mm Wall Chaser, 2300W

LARGE HAND HELD WALL CHASER, IDEAL FOR PLUMBERS AND BUILDERS

FEATURES

- Powerful 2300 watt motor
- The cutting width between the two parallel diamond cutting discs can be set with the new design stepless adjustment
- Dust Extraction Connection
- Axial Rotation of Drive Unit
- High Performance Electronics with overload protection

INCLUDES

Special Chisel, Side Handle, Keys, Parallel Guide, Carry Case

SPECIFICATIONS

Power Input	2300 Watt	Disc Diameter	230 mm
No Load Speed	6600 rpm	Spindle Thread	M14
Cutting Width	17 - 56 mm	Cable Length	4 m
Cutting Depth	10 - 65 mm	Weight	8.7 kg



S2.5Q (Part Number 4933368530)

Metal Shear, 500W

LIGHTWEIGHT AND HANDY FOR CUTTING STEEL PLATES

FEATURES

- Fast Cutting Plate Shear
- Suitable for straight and curve
- Precision Metal Gear Box and Safety Hand Guard
- Cutting Table with four sided reversible blades
- Die-cast magnesium Alloy Gear Casing

INCLUDES

(Supplied in Carton), 4 m Quik-Lok™ Cable, Four Sided Blades, Hand Guard, Thickness Gauge, Spanner

SPECIFICATIONS

Power Input	500 Watt	Cutting Capacity in aluminium	
Rated Load Strokes	1200 rpm	up to 250 N / mm2	3.0 mm
Cutting Capacity in steel plate		Max Cutting Speed	5 - 7 m / min
up to 400 / 600 / 800 N / mm2	2.5 / 2.0 / 1.5 mm	Weight	2.2 kg



N2Q (Part Number 4933368520)

Nibbler, 500W

HANDY NIBBLER WITH EXCELLENT CURVE NEGOTIATING PROPERTIES

FEATURES

- Precision Metal Gearbox
- Clean, burr-free cutting
- Excellent curve negotiation
- Direction of cutting tool can be changed 90° on both sides
- Cutting device can be rotated up to 90° on both sides
- Quik-Lok™ Cable

INCLUDES

(Supplied in Carton), 4 m Quik-Lok™ Cable, Standard Die, Spanner

SPECIFICATIONS

Power Input	500 Watt	Cutting Capacity in aluminium	
Rated Load Strokes	1200 rpm	up to 250 N / mm2	2.5 mm
Cutting Capacity in steel plate		Max Cutting Speed	1.3 m / min
up to 400 / 600 / 800 N / mm2	2.0 / 1.5 / 1.0 mm	Weight	1.8 kg



AG8-100 (Part Number 4933403245)

100 mm (4") Angle Grinder, 750W

LIGHTWEIGHT, SLIM AND COMPACT - A VERSATILE ALL-PURPOSE ANGLE GRINDER

FEATURES

- Powerful 750 watt motor and 10,000 rpm no-load speed
- PROTECTOR motor - epoxy resin coated field and heavy-duty winding protection
- Flat metal gear head
- Die-cast magnesium alloy gear casing
- Optimised ergonomics and Spindle Lock

INCLUDES

(Supplied in Carton), Guard, Flange Nut, Side Handle

SPECIFICATIONS

Power Input	750 Watt	Spindle Thread	M10
Disc Diameter	100 mm (4")	Cable Length	4 m
No Load Speed	10,000 rpm	Weight	1.8 kg
Cutting Depth	28.4 mm		



AG11-100 (Part Number AG11-100)

100 mm (4") Angle Grinder, 1100W

POWERFUL 1100W MOTOR IN A COMPACT DESIGN

FEATURES

- 1100 watt motor, high overload protection and power
- Debris Baffles protects internal components
- Multi-Port exhaust reduces motor burn-up
- 25% Longer Lasting Epoxy Protection
- Soft Grip 3 Position Handle
- Tool-Free Burst-Resistant Guard

INCLUDES

(Supplied in Carton), Side Handle, Guard, Flange Nut

SPECIFICATIONS

Power Input	1100 Watt	Spindle Lock	Yes
Disc Diameter	100 mm (4")	Cable Length	4 m
No Load Speed	10,000 rpm	Weight	1.8 kg
Spindle Thread	M10 x 2.0 mm		



AG9-125QXE (Part Number 4933403206)

125 mm (5") Angle Grinder, 850W

LIGHTWEIGHT, POWERFUL AND COMPACT 125 MM GRINDER

FEATURES

- PROTECTOR motor - epoxy resin coated field and heavy-duty winding protection
- Soft Start, Motor Overload Protection and No-load Limitation
- Dust-protected bearings and switch
- Die-cast magnesium alloy gear case and Automatic cut-off carbon brushes

INCLUDES

(Supplied in Carton), 4 m Quik-Lok™ Cable, Tool less Adjustable Guard, Flange, FIXTEC™ Flange Nut, Side Handle

SPECIFICATIONS

Power Input	850 Watt	Spindle Thread	M14
Disc Diameter	125 mm	Cable Length	4 m Quik-Lok™
No Load Speed	2,700 - 10,000 rpm	Weight	1.8 kg
Cutting Depth	33.4 mm		



AG11-125 (Part Number AG11-125)

125 mm (5") Angle Grinder, 1100W

POWERFUL 1100W MOTOR IN A COMPACT DESIGN

FEATURES

- 1100 watt motor, high overload protection and power
- Debris Baffles protects internal components
- Multi-Port exhaust reduces motor burn-up
- 25% Longer Lasting Epoxy Protection
- Soft Grip 3 Position Handle
- Tool-Free Burst-Resistant Guard

INCLUDES

(Supplied in Carton), Side Handle, Guard, Flange Nut

SPECIFICATIONS

Power Input	1100 Watt	Spindle Lock	Yes
Disc Diameter	125 mm (5")	Cable Length	4 m
No load speed	10,000 rpm	Weight	1.8 kg
Spindle Thread	M14 x 2.0 mm		



AG12-125X (Part Number 4933407495)

125 mm (5") Angle Grinder, 1200W

IDEAL FOR GETTING INTO TIGHT SPACES

FEATURES

- Tough 125 mm angle grinder with powerful 1200 watt motor
- FIXTEC™ Flange Nut, tool less, fast and easy disc changes
- Internal Winding Protection System
- Flat Metal Gear Head
- Spindle Lock with safety mechanism

INCLUDES

(Supplied in Carton), Tool less Adjustable Guard, Flange, FIXTEC™ Flange Nut, Side Handle

SPECIFICATIONS

Power Input	1200 Watt	Cable Length	4 m
Disc Diameter	125 mm	Weight	2.4 kg
No Load Speed	11,000 rpm		
Cutting Depth	33.0 mm		



AG13-125X (Part Number 4933383000)

125 mm (5") Angle Grinder 1250W

COMPACT AND LIGHTWEIGHT DESIGN ENABLES CUTTING AND GRINDING WITH EASE

FEATURES

- FIXTEC™ Flange Nut, tool less, fast and easy disc changes
- Patented Snap-lock Guard
- Internal Winding Protection System
- Flat Metal Gear Head and Dead Man Switch
- Automatic cut-off carbon brushes

INCLUDES

(Supplied in Carton), Tool less Adjustable Guard, Flange, FIXTEC™ Flange Nut, Side Handle

SPECIFICATIONS

Power Input	1250 Watt	Spindle Thread	M14
Disc Diameter	125 mm	Cable Length	4 m
No Load Speed	11,000 rpm	Weight	2.5 kg
Cutting Depth	33.0 mm		



AG15-125XC (Part Number 4933407500)

125 mm (5") Angle Grinder, 1500W

POWERFUL BARREL GRIP ANGLE GRINDER

FEATURES

- Constant power electronics
- Auto-balancer facilitates Heavy Duty grinding applications
- Quick release guard for easy adjustment
- FIXTEC™ Flange Nut, tool less, fast and easy disc changes
- Spindle Lock with safety mechanism and Flat Metal Gear Head

INCLUDES

(Supplied in Carton), Tool less Adjustable Guard, Flange, FIXTEC™ Flange Nut, Side Handle

SPECIFICATIONS

Power Input	1500 Watt	Spindle Thread	M14
Disc Diameter	125 mm	Cable Length	4 m
No Load Speed	11,000 rpm	Weight	2.4 kg
Cutting Depth	33.0 mm		



AG16-125XC (Part Number 4933407275)

125 mm (5") Angle Grinder, 1520W

THE ULTIMATE IN MID-SIZE GRINDING

FEATURES

- Internal Winding Protection System
- Thermal overload protection, soft start, no load speed limitation
- Ideal speed (7600 rpm) for grinding discs
- Quick release guard
- FIXTEC™ Flange Nut, tool less, fast and easy disc changes
- Automatic cut-off carbon brushes and Spindle Lock

INCLUDES

(Supplied in Carton), Tool less Adjustable Guard, Flange, FIXTEC™ Flange Nut, Side Handle

SPECIFICATIONS

Power Input	1520 Watt	Spindle Thread	M14
Disc Diameter	125 mm	Cable Length	4 m
No Load Speed	11,000 rpm	Weight	2.5 kg
Cutting Depth	33.0 mm		



AG16-180QC (Part Number 4933407350)

180 mm (7") Angle Grinder, 1520W

SIZE, CONTROL AND EXCELLENT POWER-TO-WEIGHT RATIO

FEATURES

- Digital electronics with constant speed, soft start, motor overload protection and no-load speed limitation
- Spindle Lock with safety mechanism and Quik-Lok™ Cable
- Integrated auto-balancer system to reduce vibrations
- Automatic cut-off carbon brushes and Dead man switch

INCLUDES

(Supplied in Carton), 4 m Quik-Lok™ Cable, Tool less Adjustable Guard, Flange, FIXTEC™ Flange Nut, Side Handle

SPECIFICATIONS

Power Input	1520 Watt	Spindle Thread	M14
Disc Diameter	180 mm	Cable Length	4 m Quik-Lok™
No Load Speed	7,600 rpm	Weight	2.9 kg
Cutting Depth	58.0 mm		



AS12QE (Part Number 4933383940)

180 mm Disc Sander, 1200W

LOW WEIGHT AND SPEED MAKES IT IDEAL FOR FINE SURFACE WORK

FEATURES

- Variable speed selection and Softstart Electronics
- Internal Winding Protection
- Automatic Cut-off Carbon Brushes
- Ergonomic Design and Spindle Lock
- Overload Protection and No-load Speed Limitation

INCLUDES

(Supplied in Carton), 4 m Quik-Lok™ Cable, Hand Guard, Side Handle, Backing Pad, Nut, Spanner

SPECIFICATIONS

Power Input	1200 Watt	Cable Length	4 m Quik-Lok™
No Load Speed	1800 - 4800 rpm	Weight	2.5 kg
Disc Diameter of Base Plate	180 mm		
Spindle Thread	M14		



AP12QE (Part Number 4933383925)
150 mm Polisher Sander, 1200W

LOW SPEED RANGE ENSURES EXCELLENT RESULTS

FEATURES

- Powerful 1200 watt disc sander, high performance and excellent handling
- Special gear for high spindle torque and ideal polishing speed
- Variable speed selection, ideal speed to any material
- Spindle Lock with safety mechanism
- Thermal Overload Protection and No-load Speed Limitation

INCLUDES

(Supplied in Carton), 6 m Quik-Lok™ Cable, Hand Guard, Side Handle, Backing Pad, Nut, Spanner

SPECIFICATIONS

Power Input	1200 Watt	Cable Length	6 m Quik-Lok™
No Load Speed	900 - 2500 rpm	Weight	2.2 kg
Disc Diameter of Base Plate	150 mm		
Spindle Thread	M14		



ACCESSORIES

Milwaukee® offers a broad line of heavy duty cutting, drilling, fastening and material removing accessories to meet the needs of professional contractors.

ICE HARDENED™ HOLE SAWS

The Milwaukee Advantage

Milwaukee introduces Ice Hardened™ Hole Saws, a new generation of hole saws that offer up to 50% longer life than the competition. They are ideal for metal and wood cutting in a wide variety of HVAC, electrical, plumbing and maintenance/repair applications. Milwaukee Ice Hardened™ products utilise a proprietary cryogenic hardening process that improves upon traditional heat treat processes. Unlike surface coatings that wear away, cryogenics harden to the core by minimising soft metal (austenite) and creating more hard metal (marstenite). The result is a product that is more consistently hard throughout, resulting in life up to 50% longer than the competition.

Milwaukee Ice Hardened™ Hole Saws also feature Matrix II bi-metal construction for greater durability and a unique precision-ground tooth geometry for faster cutting. A positive rake angle cuts more aggressively while deeper gullets quickly remove chips. A radiused back face reduces stress on the teeth, ensuring that the blade delivers optimum life and speed. Functional slot geometry allows for a standard slotted screwdriver to fit completely underneath the plug for easier plug removal.

49224175

15pce General Purpose Ice Hardened™ Hole Saw Kit

COMES WITH:

11 hole saws – 19mm, 22, 25, 29, 35, 38, 44, 51, 54, 57, 64.
2 Arbors, 2 Drill Bits, Adapter, Spacer, Carrying Case with space for additional Hole saws.



49224095

10pce Electricians Ice Hardened™ Hole Saw Kit

COMES WITH:

6 Hole saws – 22mm, 29, 35, 44, 51, 64.
2 Arbors, Two Drill Bits, Adapter, Spacer, Carrying Case with space for additional Hole saws.





49224155

18pce Plumber Ice Hardened™ Hole Saw Kit

COMES WITH:

13 hole saws – 19mm, 22, 29, 35, 38, 44, 57, 67, 76, 89, 102, 108, 114.
2 Arbors, 3 Drill Bits, Adapter, Spacer, Carrying Case with space for additional Hole saws.



49224105

19pce Electricians Ice Hardened™ Hole Saw Kit

COMES WITH:

14 hole saws – 19mm, 22, 29, 35, 38, 44, 51, 57, 64, 67, 76, 93, 105, 121.
2 Arbors, 3 Drill Bits, Adapter, Spacer, Carrying Case with space for additional Hole saws.



49224145

10pce Plumbers Ice Hardened™ Hole Saw Kit

COMES WITH:

6 hole saws – 19mm, 22, 29, 38, 44, 57.
2 Arbors, 2 Drill Bits, Adapter, Spacer, Carrying Case with space for additional Hole saws.



49224185

28pce All Purpose Ice Hardened™ Hole Saw Kit

COMES WITH:

22 hole saws – 19mm, 22, 25, 29, 32, 35, 38, 44, 51, 54, 57, 64, 67, 76, 83, 86, 92, 95, 105, 108, 114, 121.
2 Arbors, 3 Drill bits, Adaptor, Spacer, Carry Case with space for additional Hole saws.



ICE HARDENED™ HOLE SAWS

PRODUCT CODE	PRODUCT DESCRIPTION
49560012	16mm - 5/8" Ice Hardened™ Hole Saw
49560017	17mm - 11/16" Ice Hardened™ Hole Saw
49560023	19mm - 3/4" Ice Hardened™ Hole Saw
49560027	21mm - 13/16" Ice Hardened™ Hole Saw
49560032	22mm - 7/8" Ice Hardened™ Hole Saw
49560037	24mm - 15/16" Ice Hardened™ Hole Saw
49560043	25mm - 1" Ice Hardened™ Hole Saw
49560047	27mm - 1-1/16" Ice Hardened™ Hole Saw
49560052	29mm - 1-1/8" Ice Hardened™ Hole Saw
49560057	30mm - 1-3/16" Ice Hardened™ Hole Saw
49560062	32mm - 1-1/4" Ice Hardened™ Hole Saw
49560067	33mm - 1-5/16" Ice Hardened™ Hole Saw
49560072	35mm - 1-3/8" Ice Hardened™ Hole Saw
49560077	37mm - 1-7/16" Ice Hardened™ Hole Saw
49560082	38mm - 1-1/2" Ice Hardened™ Hole Saw
49560087	40mm - 1-9/16" Ice Hardened™ Hole Saw
49560092	41mm - 1-5/8" Ice Hardened™ Hole Saw
49560097	43mm - 1-11/16" Ice Hardened™ Hole Saw
49560102	44mm - 1-3/4" Ice Hardened™ Hole Saw
49560107	46mm - 1-13/16" Ice Hardened™ Hole Saw
49560112	48mm - 1-7/8" Ice Hardened™ Hole Saw
49560117	51mm - 2" Ice Hardened™ Hole Saw
49560122	52mm - 2-1/16" Ice Hardened™ Hole Saw
49560127	54mm - 2-1/8" Ice Hardened™ Hole Saw
49560132	57mm - 2-1/4" Ice Hardened™ Hole Saw
49560137	59mm - 2-5/16" Ice Hardened™ Hole Saw
49560142	60mm - 2-3/8" Ice Hardened™ Hole Saw
49560147	64mm - 2-1/2" Ice Hardened™ Hole Saw
49560153	65mm - 2-9/16" Ice Hardened™ Hole Saw
49560158	67mm - 2-5/8" Ice Hardened™ Hole Saw
49560163	70mm - 2-3/4" Ice Hardened™ Hole Saw
49560167	73mm - 2-7/8" Ice Hardened™ Hole Saw
49560173	76mm - 3" Ice Hardened™ Hole Saw
49560177	79mm - 3-1/8" Ice Hardened™ Hole Saw
49560183	83mm - 3-1/4" Ice Hardened™ Hole Saw
49560187	86mm - 3-3/8" Ice Hardened™ Hole Saw
49560193	89mm - 3-1/2" Ice Hardened™ Hole Saw
49560197	92mm - 3-5/8" Ice Hardened™ Hole Saw
49560203	95mm - 3-3/4" Ice Hardened™ Hole Saw
49560207	98mm - 3-7/8" Ice Hardened™ Hole Saw
49560213	102mm - 4" Ice Hardened™ Hole Saw
49560217	105mm - 4-1/8" Ice Hardened™ Hole Saw
49560223	108mm - 4-1/4" Ice Hardened™ Hole Saw
49560227	111mm - 4-3/8" Ice Hardened™ Hole Saw
49560233	114mm - 4-1/2" Ice Hardened™ Hole Saw
49560237	121mm - 4-3/4" Ice Hardened™ Hole Saw
49560243	127mm - 5" Ice Hardened™ Hole Saw
49560247	140mm - 5-1/2" Ice Hardened™ Hole Saw
49560253	152mm - 6" Ice Hardened™ Hole Saw
49224095	10 pce Electricians Ice Hardened™ Hole Saw Kit *
49224145	10 pce Plumbers Ice Hardened™ Hole Saw Kit *
49224175	15 pce General Purpose Ice Hardened™ Hole Saw Kit *
49224155	18 pce Master Plumber Ice Hardened™ Hole Saw Kit *
49224105	19 pce Electricians Ice Hardened™ Hole Saw Kit *
49224185	28 pce All Purpose Ice Hardened™ Hole Saw Kit *
49567010	Arbor for Hole Saws up to 30mm
49567140	Arbor for Hole Saws over 32mm

*CONTENTS OF KIT DESCRIBED ON PREVIOUS PAGE

RECOMMENDED OPERATING SPEEDS (RPM) FOR HOLE

DIAMETER MM	MILD STEEL	TOOL/ STAINLESS	CAST IRON	BRASS	ALUMINIUM	WOOD
14	580	300	400	790	900	3000
15	550	275	365	730	825	3000
19	460	230	300	600	690	3000
20	425	210	280	560	635	3000
22	390	195	260	520	585	3000
25	350	175	235	470	525	2700
28	300	150	200	400	450	2700
30	285	145	190	380	425	2400
31	275	140	180	360	410	2400
33	260	135	175	345	390	2400
35	250	125	165	330	375	2400
38	230	115	150	300	345	2400
40	220	110	145	290	330	2100
41	210	105	140	280	315	2100
44	195	95	130	260	295	2100
47	180	90	120	240	270	2100
51	170	85	115	230	255	2000
54	160	80	105	210	240	2000
57	150	75	100	200	225	2000
60	140	70	95	190	220	2000
63	135	65	90	180	205	1800
70	125	60	80	160	185	1800
76	115	55	75	150	170	1500
82	105	50	70	140	155	1500
88	95	45	65	130	145	1200
95	90	45	60	120	135	1200
101	85	40	55	110	130	1000
108	80	40	55	110	120	900
114	75	35	50	100	105	900
120	75	35	50	95	95	900
127	65	30	45	90	90	800
140	60	25	40	85	85	800
152	55	25	35	75	75	800



CARBIDE TIPPED HOLE CUTTERS

The Milwaukee Advantage

Specifically designed for hand held operations in materials up to 3/8 inch thick, these carbide tipped Steel Plate Cutters stay sharper longer than High Speed Steel or Bi-Metal Hole Saws. They produce Drill Press quality holes even in hand held operations. For cutting materials over 3/8 inch up to a depth of 1/2 inch, a drill press is recommended. When cutting depth is over 1/4 inch, use Hawg Wash® cutting fluid to keep cutting surface cool and lubricated.

Hawg Wash® fluid is available in 475 ml bottles (49-32-0081). One bottle makes over 3 litres of lubricating solution. 11/16 inch diameter.

FEATURES

- Designed for hand held operations
- Cutters stay sharper for longer
- Specially engineered



PRODUCT CODE	PRODUCT DESCRIPTION
49578305	Carbide -Tip Hole Cutter 3/4"
49578309	Carbide -Tip Hole Cutter 7/8"
49578311	Carbide -Tip Hole Cutter 1"
49578315	Carbide -Tip Hole Cutter 1 1/8"
49578317	Carbide -Tip Hole Cutter 1 7/32"
49578323	Carbide -Tip Hole Cutter 1 3/8"
49578325	Carbide -Tip Hole Cutter 1 7/16"
49578329	Carbide -Tip Hole Cutter 1 3/4"
49578331	Carbide -Tip Hole Cutter 2"
49578333	Carbide -Tip Hole Cutter 2 1/8"
49578335	Carbide -Tip Hole Cutter 2 1/4"
49578337	Carbide -Tip Hole Cutter 2 3/8"
49578339	Carbide -Tip Hole Cutter 2 1/2"
49578341	Carbide -Tip Hole Cutter 2 5/8"
49578343	Carbide -Tip Hole Cutter 3"

BIG HAWG™

The Milwaukee Advantage

BIG HAWG™® hole cutters are specifically designed for drilling large holes in rough wood applications with the speed and longevity that HVAC, plumbing, and other professional contractors require.

FEATURES

- Aggressive tooth geometry for up to ten times faster cutting than hole saws.
- Deep gullets for easy plug removal.
- Three hardened steel teeth provide maximum durability against unintended nail impacts.
- Cuts up to 600 holes in wood without needing to be re-sharpened.

PRODUCT CODE	PRODUCT DESCRIPTION
49569000	54mm (2-1/8") BIG HAWG™ Hole Cutter
49569005	57mm (2-1/4") BIG HAWG™ Hole Cutter
49569010	65mm (2-9/16") BIG HAWG™ Hole Cutter
49569020	76mm (3") BIG HAWG™ Hole Cutter
49569030	92mm (3-5/8") BIG HAWG™ Hole Cutter
49569045	108mm (4-1/4") BIG HAWG™ Hole Cutter
49569050	117mm (4-5/8") BIG HAWG™ Hole Cutter
49569065	159mm (6-1/4") BIG HAWG™ Hole Cutter
49569075	7 pce BIG HAWG™ Kit (See Kit contents on following page)
49569085	10 pce BIG HAWG™ Kit (See Kit contents on following page)
49569105	BIG HAWG™ Arbor
48271401	BIG HAWG™ Pilot Bit
48095055	BIG HAWG™ Diamond File

ARBOR AND PILOT BIT SOLD SEPARATELY.

49-56-9075
7 Piece
BIG HAWG™ KIT

- COMES WITH:**
- 1 Arbor with pilot bit, 2 pilot bits,
 - Diamond file and Hex wrench.
 - 3 Hole saws - 54mm, 65mm & 92mm



49-56-9085
10 Piece
BIG HAWG™ KIT

- COMES WITH:**
- 1 Arbor with pilot bit, 2 pilot bits,
 - Diamond file and Hex wrench.
 - 6 Hole saws - 54mm, 57mm, 65mm, 76mm, 92mm & 108mm



SELFEED BITS
The Milwaukee Advantage

Many Electricians and Plumbers rely on Milwaukee's Selffeed Bits for large hole drilling in wood. The inside cutting plane shaves the hole radius for clean smooth holes without pressure. A removable, replaceable feed screw draws the bit into the most resinous of woods effortlessly. A hex shank provides a secure gripping surface for the drill chuck. The bit is coated with a rust inhibitor. Available in 25 MM through to 116 MM. One per package.



- FEATURES**
- Fast Aggressive yet balanced and smooth drilling
 - Specialty steel alloy heat treated for maximum toughness and wear resistance
 - Resharpenable with a standard file
 - Removable and replaceable feed screw effortlessly pulls bit through material.

PRODUCT CODE	PRODUCT DESCRIPTION
48251002	25mm Selffeed Bit
48251122	29mm Selffeed Bit
48251252	32mm Selffeed Bit
48251372	35mm Selffeed Bit
48251502	38mm Selffeed Bit
48251752	44mm Selffeed Bit
48252002	50mm Selffeed Bit
48252122	54mm Selffeed Bit
48252252	57mm Selffeed Bit
48252562	65mm Selffeed Bit
48253001	76mm Large Selffeed Bit
48253621	92mm Large Selffeed Bit
48254125	105mm Large Selffeed Bit
48254621	116mm Large Selffeed Bit
48284001	140mm Selffeed Extension
48284006	300mm Selffeed Extension
48284011	450mm Selffeed Extension
48284016	600mm Selffeed Extension
48286870	Feed Screw - Coarse Thread for self feed bits up to 65mm
48286880	Feed Screw - Regular Thread for self feed bits over 76mm

FORSTNER WOOD BITS

The Milwaukee Advantage

Milwaukee's Forstner bits can be used in drilling pocket holes, overlapping holes or holes on the edge of materials. Specially designed fine kerf teeth help to produce accurate and clean holes. The bit's precision ground edges also help produce flat bottom holes.



FEATURES

- For drilling precise clean holes in wood
- Does not walk
- For the serious wood worker
- Flat bottom holes at any angle
- Through knots and grains

PRODUCT CODE	PRODUCT DESCRIPTION
48140376	3/8" Forstner Bit (9.5 mm)
48140501	1/2" Forstner Bit (12.7 mm)
48140626	5/8" Forstner Bit (15.9 mm)
48140751	3/4" Forstner Bit (19 mm)
48141001	1" Forstner Bit (25.4 mm)
48141374	1-3/8" Forstner Bit (36 mm)
48141376	35 mm Forstner Bit

WOOD AUGER BITS

The Milwaukee Advantage

Suitable for use with all types of corded/cordless drills including impact wrenches. For heavy duty, precision drilling in soft and hard wood, large section beams, joists, floorboarding, chipboard and plywood. Lewis flute design for rapid chip removal and hex shank for secure chuck grip.



PRODUCT CODE	PRODUCT DESCRIPTION	LENGTH
48130750	3/4" Auger Bit (19 mm)	162 mm 6 1/2"
48135620	Ship Auger Bit 5/8" (16 mm)	457 mm 18"
48135870	Ship Auger Bit 7/8" (23 mm)	457 mm 18"
48135560	Ship Auger Bit 9/16" (14.5 mm)	457 mm 18"
48135680	Ship Auger Bit 11/16" (17.5 mm)	457 mm 18"
48135810	Ship Auger Bit 13/16" (20.5 mm)	457 mm 18"
48135930	Ship Auger Bit 15/16" (24 mm)	457 mm 18"
48136010	Ship Auger Bit 1 1/16" (27 mm)	457 mm 18"
48136370	Ship Auger Bit 1 3/8" (35 mm)	457 mm 18"



FLAT BORING BITS

The Milwaukee Advantage

For fast, small hole drilling in wood, count on Milwaukee's premium quality Flat Boring Bits. Made of heat treated High Carbon steel, the Flat Boring Bit bores clean holes at any angle in wood, plastic, plywood and Formica. The drill point and cutting edges can be resharpened often for economical hole drilling. The Bits offer a 6 inch drilling depth but can be used with 12 inch extension, 48-28-3350, for extended deep hole drilling.

FEATURES

- 1/4" shank diameter
- 6-1/16" overall length
- Drill point and cutting edges can be resharpened
- Centre point for accuracy
- Hex shank reduces slipping
- Fast chip removal
- Easily sharpened



PRODUCT CODE	PRODUCT DESCRIPTION
48270251	Flat Boring Bit 1/4" (6.35 mm)
48270311	Flat Boring Bit 5/16" (8 mm)
48270371	Flat Boring Bit 3/8" (9.53 mm)
48270441	Flat Boring Bit 7/16" (11.11 mm)
48270501	Flat Boring Bit 1/2" (12.7 mm)
48270561	Flat Boring Bit 9/16" (14.29 mm)
48270621	Flat Boring Bit 5/8" (15.88 mm)
48270681	Flat Boring Bit 11/16" (17.5 mm)
48270751	Flat Boring Bit 3/4" (19 mm)
48270811	Flat Boring Bit 13/16" (20.5 mm)
48270871	Flat Boring Bit 7/8" (22.23 mm)
48270941	Flat Boring Bit 15/16" (23.81 mm)
48271121	Flat Boring Bit 1 1/8" (28.8 mm)
48271251	Flat Boring Bit 1 1/4" (32 mm)
48271371	Flat Boring Bit 1 3/8" (35 mm)
48271501	Flat Boring Bit 1-1/2" (38 mm)

DRILL BITS

The Milwaukee Advantage

Milwaukee's Thunderbolt Drill Bit range has expanded to include Titanium coated and Black oxide Drill Bit packs. They are engineered for commercial use with a 135 degree tip to eliminate walking, 3 flat secure grip shaft to eliminate slipping and Thunderbolt tapered web construction to eliminate breakage. Into steel, wood and PVC pipe Milwaukee's Thunderbolt range is capable of getting through the toughest materials.



PRODUCT CODE	PRODUCT DESCRIPTION
	THUNDERBOLT DRILL BITS
48892800	Black Oxide 14 Pce Drill Bit Set (Imperial) contains bits from 1/16" to 1/2 1/2" in diameter
48892802	Black Oxide 29 Pce Drill Bit Set (Imperial) contains bits from 1/16" to 1/2" in diameter
48890011	Titanium 14 Pce Drill Bit Set (Imperial) contains bits from 1/16" to 1/2 1/2" in diameter
48890012	Titanium 29 Pce Drill Bit Set (Imperial) contains bits from 1/16" to 1/2 1/2" in diameter
41892803	Black Oxide 29 Pce Drill Bit Set (Metric) contains bits from 1 mm to 13 mm in diameter
41890013	Titanium 29 Pce Drill Bit Set (Metric) contains bits from 1 mm to 13 mm in diameter
	THUNDERWEB
4932352376	HSS-G 25 Pce Drill Bit Set (Metric) contains bits from 1 mm to 13 mm
4932352374	HSS-G 19 Pce Drill Bit Set (Metric) contains bits from 1 mm to 10 mm

JOBBERS

The Milwaukee Advantage

From aluminium to cast iron, Milwaukee's extensive line of metal drill bits, bit packages and cutters are just another example of innovative heavy-duty accessories designed to attack the vast array of job site drilling applications.

PRODUCT CODE	PRODUCT DESCRIPTION
48890203	Jobber Bit HSS Twist 13/64"
48890406	Jobber Bit HSS Twist 13/32"
48890531	Jobber Bit Thunderbolt 17/32"
48890562	Jobber Bit Thunderbolt 9/16"
48890593	Jobber Bit Thunderbolt 19/32"
48890625	Jobber Bit Thunderbolt 5/8"
48890656	Jobber Bit Thunderbolt 21/32"
48890687	Jobber Bit Thunderbolt 11/16"
48890718	Jobber Bit Thunderbolt 23/32"
48890750	Jobber Bit Thunderbolt 3/4"
48890781	Jobber Bit Thunderbolt 25/32"
48890812	Jobber Bit Thunderbolt 13/16"
48890843	Jobber Bit Thunderbolt 27/32"
48890875	Jobber Bit Thunderbolt 7/8"
48890906	Jobber Bit Thunderbolt 29/32"
48890937	Jobber Bit Thunderbolt 15/16"
48890968	Jobber Bit Thunderbolt 31/32"
48891000	Jobber Bit Thunderbolt 1"
48891004	Jobber 1/16" Thunderbolt PKT10
48891006	Jobber 3/32" Thunderbolt PKT10
48891007	Jobber 7/64" Thunderbolt PKT10
48891008	Jobber 1/8" Thunderbolt PKT10
48891010	Jobber 5/32" Thunderbolt PKT10
48891012	Jobber 3/16" Thunderbolt PKT10
48891034	Jobber 1/16" Thunderbolt
48891035	Jobber 5/64" Thunderbolt
48891036	Jobber 3/32" Thunderbolt
48891037	Jobber 7/64" Thunderbolt
48891038	Jobber 1/8" Thunderbolt
48891039	Jobber 9/64" Thunderbolt
48891040	Jobber 5/32" Thunderbolt
48891041	Jobber 11/64" Thunderbolt
48891042	Jobber 3/16" Thunderbolt
48891043	Jobber 13/64" Thunderbolt
48891044	Jobber 7/32" Thunderbolt
48891045	Jobber 15/64" Thunderbolt
48891046	Jobber 1/4" Thunderbolt
48891047	Jobber 17/64" Thunderbolt
48891048	Jobber 9/32" Thunderbolt
48891049	Jobber 19/64" Thunderbolt
48891051	Jobber 21/64" Thunderbolt
48891052	Jobber 11/32" Thunderbolt
48891053	Jobber 23/64" Thunderbolt
48891054	Jobber 3/8" Thunderbolt
48891055	Jobber 25/64" Thunderbolt
48891056	Jobber 13/32" Thunderbolt
48891057	Jobber 27/64" Thunderbolt
48891058	Jobber 7/16" Thunderbolt
48891059	Jobber 29/64" Thunderbolt
48891060	Jobber 15/32" Thunderbolt
48891061	Jobber 31/64" Thunderbolt
48891062	Jobber 1/2" Thunderbolt
48891125	Jobber Bit Thunderbolt 1 1/8"
48891187	Jobber Bit Thunderbolt 1 3/16"
48891250	Jobber Bit Thunderbolt 1 1/4"
48891515	Jobber Bit HSS Twist 3/32" PK2
48891520	Jobber Bit HSS Twist 7/64" PK2
48891525	Jobber Bit HSS Twist 1/8" PK2
48891530	Jobber Bit HSS Twist 9/64"
48891535	Jobber Bit HSS Twist 5/32"
48891540	Jobber Bit HSS Twist 11/64"



PRODUCT CODE	PRODUCT DESCRIPTION
48891545	Jobber Bit HSS Twist 3/16"
48891550	Jobber Bit HSS Twist 13/64"
48891555	Jobber Bit HSS Twist 7/32"
48891565	Jobber Bit HSS Twist 1/4"
48891570	Jobber Bit HSS Twist 17/64"
48891580	Jobber Bit HSS Twist 19/64"
48891585	Jobber Bit HSS Twist 5/16"
48891590	Jobber Bit HSS Twist 21/64"
48891600	Jobber Bit HSS Twist 23/64"
48891605	Jobber Bit HSS Twist 3/8"
48891615	Jobber Bit HSS Twist 13/32"
48891625	Jobber Bit HSS Twist 7/16"
48891630	Jobber Bit HSS Twist 29/64"
48891635	Jobber Bit HSS Twist 15/32"
48891640	Jobber Bit HSS Twist 31/64"
48891645	Jobber Bit HSS Twist 1/2"
48891804	Jobber 1/16" Tin Thunderbolt PKT2
48891806	Jobber 5/64" Tin Thunderbolt PKT2
48891807	Jobber 3/32" Tin Thunderbolt PKT2
48891808	Jobber 7/64" Tin Thunderbolt PKT2
48891809	Jobber 1/8" Tin Thunderbolt PK 2
48891811	Jobber 9/64" Tin Thunderbolt PKT1
48891812	Jobber 5/32" Tin Thunderbolt PKT1
48891813	Jobber 11/64" Tin Thunderbolt PKT1
48891814	Jobber 3/16" Tin Thunderbolt PK 1
48891816	Jobber 13/64" Tin Thunderbolt PK 1
48891817	Jobber 7/32" Tin Thunderbolt PK 1
48891818	Jobber 7/32" Tin Thunderbolt PK 1
48891819	Jobber 1/4" Tin Thunderbolt PK 1
48891824	Jobber 5/16" Tin Thunderbolt PK 1
48891829	Jobber 3/8" Tin Thunderbolt PK 1
48891834	Jobber 7/16" Tin Thunderbolt
48891839	Jobber 1/2" Tin Thunderbolt



NEW!

SHOCKWAVE IMPACT DUTY™ ACCESSORIES



Compression Forged Tip
Ideal fit and reduces breakage



Shock Zone Geometry™ *
Designed to flex with spring-like action Reduces stress at the tip

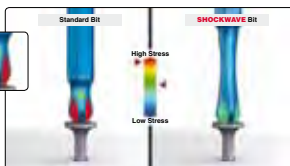
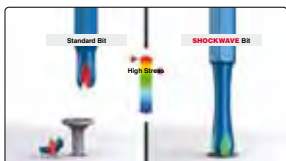


Custom Engineered Steel & Heat Treatment
High shock resistance

Up To
10x
Life

* patent pending

Standard Bit
High Stress
Failure Point



Shockwave
Absorbs Impact
and Completes
Application

Screw Driving Bits • Drill Bits • Sockets
Adapters • Bit Holders • Magnetic Drivers

SHOCKWAVE
IMPACT DUTY



ACCESSORIES

SHOCKWAVE IMPACT DUTY™

INSERT BITS



Contractor Pack



2" Power Bit

3-1/2" Power Bit

SHOCKWAVE IMPACT DUTY™ PHILLIPS BITS		
MILWAUKEE CATALOGUE NO.	PRODUCT DESCRIPTION	PKG QUANTITY
48-32-4411	#1 Phillips Shockwave Impact Duty™ Insert Bits	2
48-32-4412	#2 Phillips Shockwave Impact Duty™ Insert Bits	2
48-32-4601	#2 Phillips Shockwave Impact Duty™ Insert Bits	5
48-32-4604	#2 Phillips Shockwave Impact Duty™ Insert Bits 25Pc Contractor Pack	25
48-32-4413	#3 Phillips Shockwave Impact Duty™ Insert Bits	2
48-32-4444	#2 Phillips Reduced Diameter Shockwave Impact Duty™ Insert Bits	2
48-32-4462	#2 Phillips Shockwave Impact Duty™ 2" Power Bit	1
48-32-4602	#2 Phillips Shockwave Impact Duty™ 2" Power Bits	5
48-32-4463	#3 Phillips Shockwave Impact Duty™ 2" Power Bit	1
48-32-4562	#2 Phillips Shockwave Impact Duty™ 3-1/2" Power Bit	1

SHOCKWAVE IMPACT DUTY™ SQUARE RECESS BITS

MILWAUKEE CATALOGUE NO.	PRODUCT DESCRIPTION	PKG QUANTITY
48-32-4421	#1 Square Recess Shockwave Impact Duty™ Insert Bits	2
48-32-4422	#2 Square Recess Shockwave Impact Duty™ Insert Bits	2
48-32-4605	#2 Square Recess Shockwave Impact Duty™ Insert Bits	5
48-32-4607	#2 Square Recess Shockwave Impact Duty™ Insert Bits 10pc Contractor Pack	10
48-32-4423	#3 Square Recess Shockwave Impact Duty™ Insert Bits	2
48-32-4471	#1 Square Recess Shockwave Impact Duty™ 2" Power Bit	1
48-32-4472	#2 Square Recess Shockwave Impact Duty™ 2" Power Bit	1
48-32-4606	#2 Square Recess Shockwave Impact Duty™ 2" Power Bit	5
48-32-4473	#2 Square Recess Shockwave Impact Duty™ 2" Power Bit	1
48-32-4572	#2 Square Recess Shockwave Impact Duty™ 3-1/2" Power Bit	1



Magnetic Bit Holder

SHOCKWAVE IMPACT DUTY™ TORX® BITS

MILWAUKEE CATALOGUE NO.	PRODUCT DESCRIPTION	PKG QUANTITY
48-32-4483	T15 Torx® Shockwave Impact Duty™ 2" Power Bit	1
48-32-4484	T20 Torx® Shockwave Impact Duty™ 2" Power Bit	1
48-32-4485	T25 Torx® Shockwave Impact Duty™ 2" Power Bit	1
48-32-4487	T30 Torx® Shockwave Impact Duty™ 2" Power Bit	1

SHOCKWAVE IMPACT DUTY™ BIT HOLDERS

MILWAUKEE CATALOGUE NO.	PRODUCT DESCRIPTION	PKG QUANTITY
48-32-4502	Shockwave Impact Duty™ Compact Magnetic Bit Tip Holder (2.36")	1
48-32-4503	Shockwave Impact Duty™ 3" Magnetic Bit Tip Holder	1



NUT DRIVERS

Colour Coded Band

- For Easy Identification

Chamfered Edge

- Better Fit and Reduces Rounding



COLOUR IDENTIFICATION BAND

HEX SIZE

Red	1/4"
Amber	5/16"
Blue	3/8"
Brown	7/16"

SHOCKWAVE IMPACT DUTY™ MAGNETIC NUT DRIVERS

MILWAUKEE CATALOGUE NO.	PRODUCT DESCRIPTION	PKG QUANTITY
49664502	1/4" x 1-7/8" Shockwave Impact Duty™ Magnetic Nut Driver	1
49664503	5/16" x 1-7/8" Shockwave Impact Duty™ Magnetic Nut Driver	1
49664505	3/8" x 1-7/8" Shockwave Impact Duty™ Magnetic Nut Driver	1
49664506	7/16" x 1-7/8" Shockwave Impact Duty™ Magnetic Nut Driver	1
49664561	1-7/8" Shockwave Impact Duty™ Magnetic Nut Drivers Set (1/4", 5/16", 3/8")	3
49664562	1-7/8" Shockwave Impact Duty™ Magnetic Nut Drivers Set (1/4", 5/16", 3/8", 7/16")	4
49664522	1/4" x 1-7/8" Shockwave Impact Duty™ Magnetic Nut Drivers	3
49664523	5/16" x 1-7/8" Shockwave Impact Duty™ Magnetic Nut Drivers	3
49664525	3/8" x 1-7/8" Shockwave Impact Duty™ Magnetic Nut Drivers	3
49664526	7/16" x 1-7/8" Shockwave Impact Duty™ Magnetic Nut Drivers	3
49664532	1/4" x 2-9/16" Shockwave Impact Duty™ Magnetic Nut Driver	1
49664533	5/16" x 2-9/16" Shockwave Impact Duty™ Magnetic Nut Driver	1
49664535	3/8" x 2-9/16" Shockwave Impact Duty™ Magnetic Nut Driver	1
49664536	7/16" x 2-9/16" Shockwave Impact Duty™ Magnetic Nut Driver	1



DRILL BITS

**Thunderbolt®
Tapered Web
and Parabolic
Flute**

- Resists breaking and faster chip removal

135° Split Point

- Starts on Contact and Eliminates Walking

Taper-Fit Construction

- 1/4" Hex Drive
- Stronger Bits and Eliminates Wobble



MILWAUKEE CATALOGUE NO.	PRODUCT DESCRIPTION	PKG QUANTITY
48324401	29PC Shockwave Impact Duty™ Driver Bit Set	29

Contents:
Phillips Bits: 1" - (1) P1, (7) P2, (2) P3; 2" Power - (2) P2, (1) P3
Square Bits: 1" - (1) SQ1, (4) SQ2, (1) SQ3; 2" Power - (1) SQ2
Torx® Bits: 1" - (1) T15, (1) T20, (1) T25L 2" Power - (1) T25
Magnetic Nut Drivers: (1) 1/4" Red, (1) 5/16" Amber, (1) 3/8" Blue
(1) Magnetic Bit Holder
(1) Case with Bulk Storage Container



MILWAUKEE CATALOGUE NO.	PRODUCT DESCRIPTION	PKG QUANTITY
48894401	1/16" Shockwave Impact Duty™ Hex Drill Bit	1
48894403	3/32" Shockwave Impact Duty™ Hex Drill Bit	1
48894405	1/8" Shockwave Impact Duty™ Hex Drill Bit	1
48894407	5/32" Shockwave Impact Duty™ Hex Drill Bit	1
48894409	3/16" Shockwave Impact Duty™ Hex Drill Bit	1
48894411	7/32" Shockwave Impact Duty™ Hex Drill Bit	1
48894413	1/4" Shockwave Impact Duty™ Hex Drill Bit	1
48894431	7pc Shockwave Impact Duty™ Hex Drill Bit Set	7



SOCKETS and ADAPTERS

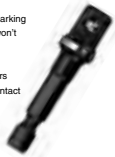
MILWAUKEE CATALOGUE NO.	PRODUCT DESCRIPTION	PKG QUANTITY
48-32-5030	1/4" Hex Shank to 1/4" Shockwave Impact Duty™ Socket Adapter	1
48-32-5031	1/4" Hex Shank to 3/8" Shockwave Impact Duty™ Socket Adapter	1
48-32-5032	1/4" Hex Shank to 1/2" Shockwave Impact Duty™ Socket Adapter	1
48-03-4405	3/8" Square x 1/4" Shockwave Impact Duty™ Socket Adapter	1
48-03-4410	1/2" Square x 1/4" Shockwave Impact Duty™ Socket Adapter	1
49-66-4422	5/16" Shockwave Impact Duty™ Deep Well Socket, 3/8"	1
49-66-4424	3/8" Shockwave Impact Duty™ Deep Well Socket, 3/8"	1
49-66-4425	7/16" Shockwave Impact Duty™ Deep Well Socket, 3/8"	1
49-66-4426	1/2" Shockwave Impact Duty™ Deep Well Socket, 3/8"	1
49-66-4427	9/16" Shockwave Impact Duty™ Deep Well Socket, 3/8"	1
49-66-4428	5/8" Shockwave Impact Duty™ Deep Well Socket, 3/8"	1
49-66-4429	11/16" Shockwave Impact Duty™ Deep Well Socket, 3/8"	1
49-66-4430	3/4" Shockwave Impact Duty™ Deep Well Socket, 3/8"	1
49-66-4431	13/16" Shockwave Impact Duty™ Deep Well Socket, 3/8"	1
49-66-4432	7/8" Shockwave Impact Duty™ Deep Well Socket, 3/8"	1
49-66-4419	8pc Shockwave Impact Duty™ 3/8" Drive Deep Well Socket Set (5/16", 3/8", 7/16", 1/2", 9/16", 5/8", 11/16", 3/4")	8



Impact Duty Steel

(Chrome-Molybdenum)

- Ultimate durability
- Deep Well
- Thin Wall Construction
- Easy access in tight areas
- Laser Etched Size Marking
- Easy identification, won't wear off
- 6pt Recessed Corners
- Maximum surface contact on fastener



SDS-PLUS

The Milwaukee Advantage

Incorporating the industry standard shank for carbide drilling bits, Milwaukee's SDS bits have carbide vacuum brazed to heat treated steel shanks. The sharpened angle of the carbide creates two cutting edges. The flute of the bit is designed for fast removal of the concrete dust from the hole, aiding in more efficient drilling of small holes.

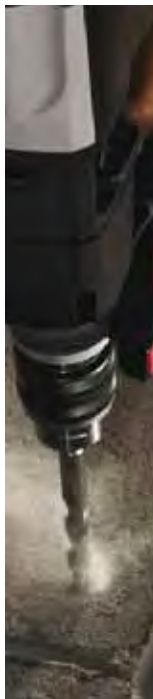
PRODUCT CODE	PRODUCT SIZE
MILW373908	3.5mm x 110mm
MILW339498	4mm x 110mm
MILW399143	4mm x 160mm
MILW307067	5mm x 110mm
MILW344290	5mm x 140mm
MILW399315	5mm x 160mm
MILW399316	5mm x 210mm
MILW399310	5mm x 310mm
MILW339499	5.5mm x 110mm
MILW340408	5.5mm x 160mm
MILW399317	5.5mm x 210mm
MILW399318	5.5mm x 260mm
MILW399319	5.5mm x 310mm
MILW307068	6mm x 110mm
MILW307069	6mm x 160mm
MILW373136	6mm x 210mm
MILW353819	6mm x 260mm
MILW399321	6mm x 310mm
MILW399322	6mm x 460mm
MILW344292	6.5mm x 110mm
MILW344293	6.5mm x 160mm
MILW399147	6.5mm x 210mm
MILW399148	6.5mm x 260mm
MILW399323	6.5mm x 310mm
MILW353820	7mm x 110mm
MILW340409	7mm x 160mm
MILW399222	7mm x 210mm
MILW399324	7mm x 250mm
MILW307070	8mm x 110mm
MILW371823	8mm x 140mm
MILW307071	8mm x 160mm
MILW307072	8mm x 210mm
MILW353821	8mm x 260mm
MILW399325	8 x 310
MILW399326	8 x 400
MILW367013	8 x 460
MILW399327	8 x 600
MILW353823	9 x 160
MILW353822	9 x 210
MILW399160	9.5 x 160
MILW340410	10 x 110
MILW307073	10 x 160
MILW307074	10 x 210
MILW344295	10 x 260
MILW353824	10 x 310
MILW353350	10 x 350
MILW344296	10 x 450
MILW367014	10 x 600
MILW367800	10 x 800
MILW367015	10 x 1000
MILW367066	11 x 160
MILW399210	11 x 210
MILW399329	11 x 260
MILW399311	11 x 310
MILW307075	12 x 160
MILW307076	12 x 210
MILW344297	12 x 260
MILW353825	12 x 310
MILW392360	12 x 360
MILW307077	12 x 450
MILW367068	12 x 600



MILW367017	12 x 1000
MILW307946	13 x 160
MILW393210	13 x 210
MILW344298	13 x 260
MILW393310	13 x 310
MILW307078	14 x 160
MILW353826	14 x 210
MILW307079	14 x 260
MILW399330	14 x 310
MILW307088	14 x 450
MILW367018	14 x 600
MILW367019	14 x 1000
MILW373910	15 x 160
MILW395210	15 x 210
MILW344300	15 x 260
MILW395450	15 x 450
MILW307080	16 x 160
MILW307081	16 x 210
MILW399331	16 x 260
MILW344301	16 x 310
MILW307082	16 x 450
MILW367069	16 x 600
MILW367020	16 x 800
MILW367021	16 x 1000
MILW397210	17 x 210
MILW397450	17 x 450
MILW344303	18 x 200
MILW307083	18 x 250
MILW344304	18 x 300
MILW340411	18 x 450
MILW367022	18 x 600
MILW367023	18 x 800
MILW367024	18 x 1000
MILW367070	19 x 200
MILW367071	19 x 450
MILW344305	20 x 200
MILW307084	20 x 250
MILW399027	20 x 300
MILW307085	20 x 450
MILW367025	20 x 600
MILW367026	20 x 1000
MILW373911	22 x 250
MILW344307	22 x 450
MILW367027	22 x 600
MILW367028	22 x 800
MILW367029	22 x 1000
MILW367200	22 x 250
MILW373922	24 x 250
MILW 307087	24 x 450
MILW344308	25 x 250
MILW344309	25 x 450
MILW367030	15 x 1000
MILW344310	26 x 250
MILW344311	26 x 450

SDS 4 CUT- MM

MILW356500	16 x 250
MILW356501	16 x 450
MILW356502	18 x 250
MILW356503	18 x 450
MILW356504	20 x 250
MILW356505	20 x 450
MILW399332	22 x 250
MILW356506	22 x 450
MILW356507	24 x 250
MILW356508	24 x 450
MILW399333	25 x 250
MILW356509	25 x 450
MILW399334	28 x 250
MILW356510	28 x 450
MILW399335	30 x 250
MILW356511	30 x 450
MILW399336	32 x 450



SDS-MAX

The Milwaukee Advantage

SDS-max Carbide Bits feature the SDS-max drive system for fast bit changes and efficient power transfer from the Hammer to the bit. The flutes provide a fast deep means of clearing concrete dust from deep holes speeding up drill rates.



PRODUCT CODE	PRODUCT SIZE
MILW343614	12mm x 340mm
MILW343615	12mm x 540mm
MILW343616	12mm x 690mm
MILW343617	14mm x 340mm
MILW343618	14mm x 540mm
MILW343619	15mm x 340mm
MILW343620	15mm x 540mm
MILW343621	16mm x 340mm
MILW343622	16mm x 540mm
MILW343623	18mm x 340mm
MILW343624	18mm x 540mm
MILW343625	20mm x 320mm
MILW343626	20mm x 520mm
MILW343627	20mm x 920mm
MILW343628	22mm x 320mm
MILW343629	22mm x 520mm
MILW343630	22mm x 920mm
MILW343631	24mm x 320mm
MILW343632	24mm x 520mm
MILW343633	25mm x 320mm
MILW343634	25mm x 520mm
MILW343635	25mm x 920mm
MILW343520	26mm x 520mm
MILW343636	28mm x 370mm
MILW343637	28mm x 570mm
MILW343638	28mm x 670mm
MILW343639	30mm x 370mm
MILW343640	30mm x 570mm
MILW343641	32mm x 370mm
MILW343642	32mm x 570mm
MILW343643	32mm x 920mm
MILW343644	35mm x 370mm
MILW343645	35mm x 570mm

21 MM K - HEXAGONAL ACCESSORIES

The Milwaukee Advantage

Easy centering. The special tip design ensures accurate positioning avoids skating on hard and smooth materials.

FEATURES

- Optimal dust removal - The large entrance channels remove the dust quickly from the hole for less wear rate on the tip resulting higher performance and longer life time.
- Precise round holes - Due to extra carbide tips the drill bit will produce precise round holes and also has excellent performance when hitting rebar.
- High energy transfer - The patented KVS-flute design gives the best energy transfer from the tool reception to the drill bit tip and also lowest vibration.

PART NUMBER	MATERIAL DESCRIPTION
4932399559	16 x 420mm 21 mm K - Hex Bit
4932399560	16 x 570mm 21 mm K - Hex Bit
4932399561	18 x 420mm 21 mm K - Hex Bit
4932399562	18 x 570mm 21 mm K - Hex Bit
4932399563	20 x 420mm 21 mm K - Hex Bit
4932399564	20 x 570mm 21 mm K - Hex Bit
4932399565	22 x 420mm 21 mm K - Hex Bit
4932399566	22 x 570mm 21 mm K - Hex Bit
4932399568	25 x 420mm 21 mm K - Hex Bit
4932399569	25 x 570mm 21 mm K - Hex Bit
4932399570	25 x 720mm 21 mm K - Hex Bit
4932399571	28 x 570mm 21 mm K - Hex Bit
4932399572	30 x 570mm 21 mm K - Hex Bit
4932399573	32 x 570mm 21 mm K - Hex Bit
4932399575	38 x 570mm 21 mm K - Hex Bit
4932399576	40 x 570mm 21 mm K - Hex Bit
4932399578	50 x 570mm 21 mm K - Hex Bit



21 MM K - HEXAGONAL DRILL BITS

ACCESSORY	LENGTH	PART NUMBER
Pointed Chisel	300mm	4932399250
Pointed Chisel	380mm	4932399251
Pointed Chisel	450mm	4932399252
Pointed Chisel	600mm	4932399253
25mm Chisel	300mm	4932399255
25mm Chisel	380mm	4932399256
25mm Chisel	450mm	4932399257
25mm Chisel	910mm	4932399259
50mm Chisel	300mm	4932399260
75mm Chisel	300mm	4932399261
Adaptor Shank	300mm	4932399280
Adaptor Shank	450mm	4932399281
Adaptor Shank	600mm	4932399282
Spade (Straight Edge)	520mm	4932399264
	WIDTH	PART NUMBER
Electrode or Earth Stake Driver	12mm (1/2")	4932399265
Electrode or Earth Stake Driver	16mm (5/8")	4932399266
Electrode or Earth Stake Driver	19mm (3/4")	4932399267
Electrode or Earth Stake Driver	25mm (1")	4932399269
Tamping Plate (Requires Adaptor Shank)	100 x 140mm	4932399270
Tamping Plate (Requires Adaptor Shank)	145mm Round	4932399271
Floor cleaning tool (Requires Adaptor Shank)	1.5mm Complete	4932399272
PARTS TO MAKE UP ABOVE	1.5mm Blade Only	4932399274
(Select either 1.5mm or 2mm blade)	2mm Blade Only	4932399273
	Clamping Bracket	4932399275
	Yoke	4932399277
	Gasket (2 required)	4932399278
	Screws (4 required)	9170069420
	Nuts (4 required)	9170051170
	Washers (4 required)	9170069580
	Repair Kit (4 screws, 4 nuts, 4 washers & 2 gaskets)	9772033039

BELLHANGERS
The Milwaukee Advantage

Milwaukee’s Bellhanger bits are ideal for installing all types of small wire systems including computer, security, phone, and cable. With 30.48cm, 45.72cm and 60.96cm lengths they provide extra reach where needed and a hole in the tip to help pull wires through holes. Non-stick coated flutes increases chip ejection and reduces binding. An aggressive tip geometry provides faster cutting and the 3-flute shank stops the bit from slipping in the user’s drill.

FEATURES

- Versatile Lengths that give the user extra reach
- Ideal for installers of computer systems, phone systems, and all wire cables
- Non stick flute increases chip ejection
- Aggressive tips

PRODUCT CODE	PRODUCT DESCRIPTION
48137125	Bellhanger Bit 6.35mm x 300mm
48137131	Bellhanger Bit 8mm x 300mm
48137137	Bellhanger Bit 10mm x 300mm
48137218	Bellhanger Bit 4.76mm x 450mm
48137225	Bellhanger Bit 6.35mm x 450mm
48137231	Bellhanger Bit 8mm x 450mm
48137237	Bellhanger Bit 10mm x 450mm
48137325	Bellhanger Bit 6.35mm x 600mm



CABLE BITS

The Milwaukee Advantage

When drilling in unreachable areas, reach for the extra long Cable Bit to do the job. Like the Bell Hanger Bit, the Cable Bit is designed for installers of small wire systems such as computer, security, phone and cable.

The 3/4" x 54" Milwaukee Cable Bit has a flexible steel shaft that lets you reach behind the wall with greater precision and ease. Use the placement tool, 48-08-0275, to properly locate the hole within the interior of a wall. The Cable Bit is equipped with a hole in the tip to pull the wire through after drilling. One per package. Also available in 72 inch length.

FEATURES

- 54" Length
- Designed for installers of small wire
- Aggressive tip
- Designed for easy drilling into timber
- Shank designed to not slip



PRODUCT CODE	PRODUCT DESCRIPTION
48138237	Cable Bit 3/8" x 54"
48138250	Cable Bit 1/2" x 54"
48138256	Cable Bit 9/16" x 54"
48138275	Cable Bit 3/4" x 54"
48138337	Cable Bit 3/8" x 72"
48138350	Cable Bit 1/2" x 72"
48138356	Cable Bit 9/16" x 72"
48138375	Cable Bit 3/4" x 72"

SAWZALL™ BLADES

The Milwaukee Advantage

Milwaukee designs and manufactures Sawzall™® blades for the toughest professional applications. Materials, tooth configuration and heat treating are designed to maximise performance in specific cutting applications. Durability and endurance are the goal of every blade we make. These blades have a 1/2" universal tang that fits all Sawzall™® Reciprocating Saws and standard competitive saws.

MATERIAL THICKNESS	TPI
4.5 to 10mm	14
3 to 4.5mm	18
Less than 3mm	24

MATERIAL	MATERIAL HARDNESS	SPM
Metal	Less than 600 N/mm strength	2000
Metal	Between 600 to 800 N/mm strength	1500
Metal	Over 800 N/mm strength	500
Aluminium		1500
PVC or Perspex		500
Wood		2000 to 2800



49221129

**12pce Demolition kit
Sawzall™ blades**

COMES WITH:

Shank Reception

1/2" Universal shank Suitable for the brands
AEG, B & D, Bosch, DeWalt, Fein, Flex, Hilti,
Makita, Metabo, Milwaukee, Porter Cable,
Ridgid, Rothenberger, Ryobi, Skil.

ICE EDGE Sawzall™ Blades

Up to 50% longer life. Unique cryogenic heat treatment process provides tougher teeth for extreme applications. Excellent cutting performance and lifetime in difficult materials such as stainless steel.

Up to 65 HRC tooth hardness with cobalt for the most demanding applications in all metals and high alloy steels. The blade body has a high level of elasticity and significantly reduces the risk of blade breakage. Matrix II Bi-Metal strip with 8% cobalt teeth can endure high wear rates, and is very heat resistant ensuring longer life.

TPI

To obtain the correct blade length, it is necessary to take the width of material to be cut and add an extra 80mm. Selecting the correct Tooth Per Inch for the material being cut is dependent on the thickness of the material being cut. This is extremely important when cutting metals to ensure the blade is used to its optimum performance. The golden rule is to have 3 teeth in contact with the material being cut at all times. When cutting wood the lower the TPI the rougher and coarser the cut will be.



SAWZALL™ BLADES

MATERIAL NUMBER	DESCRIPTION		ICON
	TEETH	LENGTH	
WOOD 5 PACKS			
48005015	6Tooth	150mm	Clean cut in wood and all types of man made boards
48005016	6Tooth	230mm	Clean cut in wood and all types of man made boards
48005017	6Tooth	300mm	Clean cut in wood and all types of man made boards
48005035	6Tooth	150mm	Nail embedded wood
48005036	6Tooth	230mm	Nail embedded wood
48005037	6Tooth	300mm	Nail embedded wood
48005052	6Tooth	130mm	Plaster and drywall
48005031	5/8Tooth	150mm	Nail embedded wood
48005041	4/6Tooth	150mm	Nail embedded wood
WOOD 25 PACKS			
48008021	5/8Tooth	150mm AX	Nail embedded wood and all types of man made boards
48008026	5/8Tooth	230mm AX	Nail embedded wood and all types of man made boards
48008027	5/8Tooth	300mm AX	Nail embedded wood and all types of man made boards
WOOD 50 PACKS			
48016035	6Tooth	150mm	Wood cutting
METAL 5 PACKS			
48005181	14Tooth	100mm	Metal cutting
48005182	14Tooth	150mm	Metal cutting
48005187	14Tooth	230mm	Metal cutting
48005282	14Tooth	150mm	Metal cutting with 16mm width for greater flexibility
48005162	14Tooth	200mm	Metal scroll cutting
48005183	18Tooth	100mm	Metal cutting
48016284	18Tooth	150mm	Metal cutting - scroll cutting
48005184	18Tooth	150mm	Metal cutting
48005163	18Tooth	200mm	Metal scroll cutting
48005188	18Tooth	230mm	Metal cutting
48016188	18Tooth	230mm	Metal cutting - scroll cutting
48005189	18Tooth	300mm	Metal cutting
48016189	18Tooth	300mm	Metal cutting - scroll cutting
48005185	24Tooth	100mm	Metal cutting
48005186	24Tooth	150mm	Metal cutting
METAL 25 PACKS			
48008701	8Tooth	150mm WRECKER	Ferrous and non-ferrous metals, plastics, and nail embedded wood
48008706	8Tooth	230mm WRECKER	Ferrous and non-ferrous metals, plastics, and nail embedded wood
48008711	8Tooth	300mm WRECKER	Ferrous and non-ferrous metals, plastics, and nail embedded wood
METAL 50 PACKS			
48016282	14Tooth	150mm	Metal cutting
48016184	18Tooth	150mm	Metal cutting
48016186	24Tooth	150mm	Metal cutting
48016187	14Tooth	230mm	Metal cutting
GENERAL PURPOSE 5 PACKS			
48005090	10Tooth	100mm	General purpose, fast cutting
48005092	10Tooth	150mm	General purpose, fast cutting
48005161	10Tooth	200mm	General purpose, scroll cutting
48005091	8/12Tooth	150mm	General purpose, fast cutting
48005093	8/12Tooth	200mm	General purpose, fast cutting
48005094	8/12Tooth	300mm	General purpose, fast cutting
48005193	10/14Tooth	200mm	General purpose cutting
48005194	10/14Tooth	300mm	General purpose cutting
GENERAL PURPOSE 50 PACKS			
48016091	8/12Tooth	150mm	General purpose cutting

MATERIAL NUMBER	DESCRIPTION		ICON
	TEETH	LENGTH	
DEMOLITION 5 PACKS			  
48005021	5/8Tooth	150mm AX	Nail embedded plywood and all other wood products
48005026	5/8Tooth	230mm AX	Nail embedded plywood and all other wood products
48005027	5/8Tooth	300mm AX	Nail embedded plywood and all other wood products
48005701	8Tooth	150mm WRECKER	Ferrous and non-ferrous metals, plastics, and nail embedded wood
48005706	8Tooth	230mm WRECKER	Ferrous and non-ferrous metals, plastics, and nail embedded wood
48005711	8Tooth	300mm WRECKER	Ferrous and non-ferrous metals, plastics, and nail embedded wood
48005712	10Tooth	150mm TORCH	Straighter cuts in pipes, conduit, struts other metal components
48005713	10Tooth	230mm TORCH	Straighter cuts in pipes, conduit, struts other metal components
48005782	14Tooth	200mm TORCH	Straighter cuts in pipes, conduit, struts other metal components
48005784	18Tooth	150mm TORCH	Straighter cuts in pipes, conduit, struts other metal components
48005787	14Tooth	230mm TORCH	Straighter cuts in pipes, conduit, struts other metal components
48005788	18Tooth	230mm TORCH	Straighter cuts in pipes, conduit, struts other metal components
48005789	18Tooth	300mm TORCH	Straighter cuts in pipes, conduit, struts other metal components
DEMOLITION 25 PACKS			
48008021	5/8Tooth	150mm AX	Nail embedded plywood and all other wood products
48008026	5/8Tooth	230mm AX	Nail embedded plywood and all other wood products
48008027	5/8Tooth	300mm AX	Nail embedded plywood and all other wood products
48008701	8Tooth	150mm WRECKER	Ferrous and non-ferrous metals, plastics, and nail embedded wood
48008706	8Tooth	230mm WRECKER	Ferrous and non-ferrous metals, plastics, and nail embedded wood
48008711	8Tooth	300mm WRECKER	Ferrous and non-ferrous metals, plastics, and nail embedded wood
48008712	10Tooth	150mm TORCH	Straighter cuts in pipes, conduit, struts other metal components
48008713	10Tooth	230mm TORCH	Straighter cuts in pipes, conduit, struts other metal components
48008782	14Tooth	150mm TORCH	Straighter cuts in pipes, conduit, struts other metal components
48008784	18Tooth	150mm TORCH	Straighter cuts in pipes, conduit, struts other metal components
48008788	18Tooth	230mm TORCH	Straighter cuts in pipes, conduit, struts other metal components
48008789	18Tooth	300mm TORCH	Straighter cuts in pipes, conduit, struts other metal components
KITS CONTENTS			
49221127	Common Pack 11pce Assorted		12" 8/12 TPI blade, 6" 10 TPI blade, 6" 8/12 TPI blade, 6" 5/8 TPI blade, 6" 4/6 TPI scroll blade, 9" 6 TPI blade, 8" 8/12 TPI blade, 6" 14 TPI blade, 6" 18 TPI blade, 6" 24 TPI blade, 3-5/8" 14 TPI scroll blade
49221129	Demolition Pack 12pce Assorted		4X 6" 18 TPI The Torch™ blades, 2X 6" 8 TPI The Wrecker™ blades, 2X 6" 5/8 TPI The Ax™ blades, 2X 9" 5/8 TPI The Ax™ blades, 2X 9" 14 TPI The Torch™ blades and Storage Container

DIAMOND GRIT SAWZALL™ BLADES

The Milwaukee Advantage

'The Torch' Diamond Grit Sawzall™ blades are ideal for cutting cast iron, hard tiles, masonry and other abrasive and hard materials.

FEATURES

- Diamond Grit delivers up to 30 x longer life than standard carbide grit blades. The result is a significantly lower cost per cut.
- The precisely controlled size and placement of the diamond grit allow these blades to cut up to 2x faster than standard carbide grit blades.
- A thicker, more rigid blade body resists fracturing and bending for maximum durability.
- The 1" tall blade body reduces blade twisting for straighter, more accurate cuts.



PRODUCT CODE	PRODUCT DESCRIPTION
48001440	Diamond Grit Sawzall™ Blade 150MM
48001450	Diamond Grit Sawzall™ Blade 230MM

HACKZALL™ BLADES

The Milwaukee Advantage

Designed to maximize the cutting performance of the new M12 Hackzall™ Reciprocating Saw, these blades feature a thin kerf design that reduces the amount of drag and resistance while cutting, resulting in more cuts per battery charge. Specialised blades are available for a variety of HVAC, electrical, plumbing and maintenance / repair applications.



PRODUCT CODE	PRODUCT DESCRIPTION
49005400	Fibreglass, 4", 5 Pk
49005410	General, 4", 5 Pk
49005414	PVC, 4", 5 Pk
49005418	EMT, 4", 5 Pk
49005424	Duct, 4", 5 Pk
49005460	Wood, 4", 5 Pk
49005461	Plaster, 4", 5 Pk
49005614	PVC, 6", 5 Pk
49220220	10 pce M12 HACKZALL™ Blade set Contains: 2 wood blades, 3 EMT blades, 2 duct blades, 3 PVC blades, & storage pouch

CIRCULAR SAW BLADES

The Milwaukee Advantage

Endurance blades offer faster cutting and extra long life for contractors. Carbide teeth made of C-3 grade micro ground carbide with an alternate top bevel with face bevel grind keep the cutting edge sharper for longer periods of time. A hardened alloy steel body is used to ensure straight, accurate cuts. Specially engineered heat expansion slots prevent blade distortion and increase blade life. All these features add up to a high quality blade that contractors can depend on, time and time again.

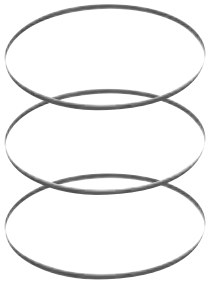


MATERIAL	PRODUCT CODE	PRODUCT DESCRIPTION	ARBOR
Plastics	48404005	6 1/2" 60 Carbide Teeth	16mm (5/8")
Metals	48404015	6 1/2" 48 Carbide Teeth	16mm (5/8")
Fibre cement board	48404025	6 1/2" 40 Carbide Teeth	16mm (5/8")
Wood	48404108	6 1/2" 24 Carbide Teeth	16mm (5/8")
Wood rip and cross cutting blade	48404120	7 1/4" 24 Carbide Teeth	16mm (5/8")
Wood framing and ripping	48404148	8 1/4" 18 Carbide Teeth	16mm (5/8")
Wood rip and cross cutting blade	48404150	8 1/4" 24 Carbide Teeth	16mm (5/8")
Wood rip and cross cutting blade	48404152	8 1/4" 40 Carbide Teeth	16mm (5/8")

BANDSAW BLADES

The Milwaukee Advantage

Milwaukee has long been the industry standard for portable band saws and blades. All bandsaw blades are designed to maximize the performance of the saw and deliver exceptional results in even the most demanding professional applications.



SIZE OF BLADE	PART NUMBER	SUITS WHICH MODEL
1140mm x 12mm x 10TPI (Pk 3)	48390501	HBS120E & V28BS
1140mm x 12mm x 10TPI (Pk 100)	48390502	HBS120E & V28BS
1140mm x 12mm x 14TPI (Pk 3)	48390511	HBS120E & V28BS
1140mm x 12mm x 14TPI (Pk 100)	48390512	HBS120E & V28BS
1140mm x 12mm x 18TPI (Pk 3)	48390521	HBS120E & V28BS
1140mm x 12mm x 18TPI (Pk 100)	48390522	HBS120E & V28BS
1140mm x 12mm x 24TPI (Pk 3)	48390531	HBS120E & V28BS
1140mm x 12mm x 24TPI (Pk 100)	48390532	HBS120E & V28BS
1140mm x 12mm x 10/14TPI (Pk 3)	48390551	HBS120E & V28BS
1140mm x 12mm x 10/14TPI (Pk 100)	48390552	HBS120E & V28BS
1140mm x 12mm x 14/18TPI (Pk 3)	48390561	HBS120E & V28BS
1140mm x 12mm x 14/18TPI (Pk 100)	48390562	HBS120E & V28BS
900mm (35 3/8") x 12mm x 10TPI (Pk 3)	48390509	HD18BS-0
900mm (35 3/8") x 12mm x 18TPI (Pk 3)	48390529	HD18BS-0
900mm (35 3/8") x 12mm x 24TPI (Pk 1)	48390538	HD18BS-0



JIGSAW BLADES

The Milwaukee Advantage

Milwaukee Jigsaw blades are designed and manufactured for the professional user. Detail to the material used, tooth shape and sharpness make these blades cut clean, fast and have a longer life. All Jigsaw Blades have a T-Shank for a universal fit.

FEATURES

- More Teeth equal smoother cuts
- Less teeth equal a faster cut
- At least 3 teeth recommended in material at all times

PRODUCT CODE	PRODUCT DESCRIPTION
48420500	JIGSAW BLADE HCS 6T 4LG For very fast clean cutting in wood.
48422190	JIGSAW BLADES METAL PKT5 For cutting thick metal over 1/4" thick.
48422390	JIGSAW BLADES GENERAL PKT5 General purpose blade for scroll cutting in wood and metal. Universal Shank.
48425220	JIGSAW BLADES GENERAL PKT5 General purpose blade for fast straight cutting in wood.
	METAL 
48425101	JIGSAW BLADES METAL CUT PKT5 For cutting metal fast over 1/4" thick.
48425166	JIGSAW BLADES METAL CUT PKT5 For cutting thin metal under 1/8" thick.
48425190	JIGSAW BLADES METAL CUT PKT5 For cutting thick metal over 1/4" thick.
48425850	JIGSAW BLADES METAL CUT PKT5 Ideal for cutting aluminium and non-ferrous metals.
48425300	JIGSAW BLADES PKT5 General purpose blade for fast cutting and cutting nail embedded wood. 6 TPI.
48425310	JIGSAW BLADES PKT5 General purpose blade for fast cutting and cutting nail embedded wood. 10 TPI (clean cut).
	WOOD 
48425421	JIGSAW BLADES WOOD REV PKT5 For very fast rough cutting in wood. High carbon steel blade.
48425540	JIGSAW BLADES WOOD REV PKT5 Reverse tooth construction prevents top splinters when cutting in wood. Smooth cut.



WORKGEAR

The Milwaukee Advantage

Before beginning any job, the first thought should be safety and work gear. To ensure a safe working environment Milwaukee has a comprehensive line of safety gear including safety glasses and goggles, gloves, bags, cases, torches and camera equipment.

PRODUCT CODE	PRODUCT DESCRIPTION
	WORK STORAGE
49170190	Tool Belt 33 Pocket 3 Pce
49170195	Tool Belt 33 Pocket 5 Pce
49170180	Bucket-Less Organiser
48553530	Milwaukee Contractor Bag XL
	WORK GLOVES
49170132	Work Gloves - L
49170133	Work Gloves - XL
49170134	Work Gloves - XXL
	GLOBES
49810020	Globe - Worklamp 12 - 14.4 Volt PK 2
49810030	Globe - Worklamp 18 Volt Pk 2
49810040	Globe - Worklamp 28 Volt Pk 2
	INSPECTION EXTENSION CABLES
48530110	914 mm Extension Cable to suit C12IC-21C (2 can be used to reach maximum extension of 2.7 metres including supplied cable)
48530140	2.5 metre extension cable to suit C12ICAVA-21C, C12ICAVD-21C and C12IC-21C
48530130	M-Spector AV Replacement Analogue Camera Cable 9.5 mm Head

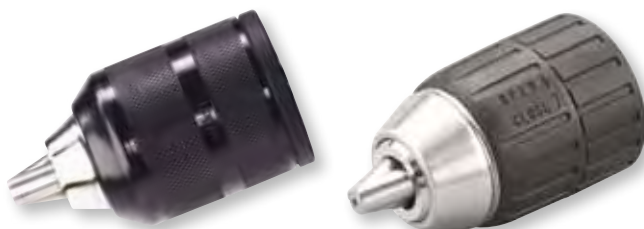


CHUCKS

PRODUCT CODE	PRODUCT DESCRIPTION	CHUCK KEY
	KEYED CHUCKS	
4932218111	1.5 - 13 MM 1/2" x 20 - Keyed, Industrial Chuck (suits percussion, rotary and battery drills)	D
4932373412	1 - 10 MM 3/8" x 24 - Keyed, Industrial Chuck with Safety Screw (suits percussion, rotary and battery drills)	D
4932219667	1 - 10 MM 1/2" x 20 - Keyed, Industrial Chuck (suits percussion, rotary and battery drills)	D
4932269401	1 - 10 MM 1/2" x 20 - Keyed, Industrial Chuck with Safety Screw (suits percussion, rotary and battery drills)	D
4932218111	1.5 - 13 MM 1/2" x 20 - Keyed, Industrial Chuck (suits percussion, rotary and battery drills)	D
4932267980	1.5 - 13 MM 1/2" x 20 - Keyed, Industrial Chuck with Safety Screw (suits percussion, rotary and battery drills)	D
4932044700	1.5 - 13 MM 3/8" x 24 - Keyed, Industrial Chuck with Safety Screw (suits percussion, rotary and battery drills)	D
4932127010	1 - 16 MM B16 Taper - Keyed (suits rotary drills)	A
4932320014	3 - 16 MM M 18 x 2.5 Keyed Industrial Chuck with Safety Screw and Locking Device (suits rotary and percussion drills)	A
4932363753	3 - 16 MM 1/2" x 20 Keyed Industrial Chuck (suits rotary and percussion drills)	D
4932117031	5 - 20 MM Taper B 22 Industrial Rotary Drill Keyed Chuck (suits rotary drills)	C
4932314867	0.5 - 6.5 MM Hex 1/4" Battery Drill Chuck (suits battery drill only)	B
4932319409	0.5 - 6.5 MM Special Reception 1/4" Battery Drill Chuck (suits battery drill only)	B
4932360017	1 - 13 MM SDS Plus shank, Keyed industrial chuck with locking device	D
	CHUCK KEYS (SYMBOL INDICATES WHICH CHUCK IT FITS)	
4932221379	Chuck Key (A)	
4932304684	Chuck Key S14 (B)	
4932221380	Chuck Key S4 (C)	
4932221378	Chuck Key S2A (D)	

AEG BRANDED CHUCKS

PRODUCT CODE	PRODUCT DESCRIPTION
	KEYLESS CHUCKS
4932376533	1.5 - 13 MM 1/2" x 20 - Keyless, industrial chuck with safety screw and locking device (suits rotary, percussion and battery drills)
4932364267	1.5 - 13 MM 1/2" x 20 - Keyless, industrial chuck with safety screw and locking device (suits rotary, percussion and battery drills)
4932371913	1.5 - 13 MM 1/2" x 20 - Keyless, industrial chuck with safety screw and locking device. (Fixtec) (suits rotary, percussion and battery drills)



PRODUCT CODE	PRODUCT DESCRIPTION
	KEYLESS CHUCKS
4932349457	1 - 10 MM 3/8" x 24 Keyless Chuck with Safety Screw (suits rotary and battery drills)
4932364382	1 - 10 MM 1/2" x 20 Keyless Chuck with Safety Screw and Locking Device (suits rotary, percussion and battery drills)
4932364613	1 - 10 MM 1/2" x 20 Keyless Chuck with Safety Screw (suits rotary, percussion and battery drills)
4932376531	1.5 - 13 MM 1/2" x 20 Keyless Chuck with Locking Device (suits rotary, percussion and battery drills)
4932364265	1.5 - 13 MM 1/2" x 20 Industrial Keyless Chuck with Locking Device (suits rotary, percussion and battery drills)
4932371018	1 - 10 MM 3/8" x 24 Keyless Chuck with Locking Device and Safety Screw (suits rotary, percussion and battery drills)
4932372443	1 - 10 MM 1/2" x 20 Keyless Chuck with Locking Device and Safety Screw (suits rotary, percussion and battery drills)
4932399214	1.5 - 13 MM Fixtec Industrial Keyless Chuck with Locking Device (suits rotary, percussion and battery drills)
4932271212	0.5 - 10 MM 1/2" X 20 Industrial Keyless Chuck (suits rotary, percussion and battery drills)
4932364266	1 - 13 MM 1/2" x 20 Industrial Keyless Chuck with Locking Device (suits rotary, percussion and battery drills)
4932127011	3 - 16 MM Taper B 16 Industrial Keyless Chuck (suits rotary drills)
4932309146	3-16MM 1/2" x 20 Rotary Drill Industrial Keyless chuck (suits rotary drills)
	FIXTEC AND SDS - PLUS ADAPTORS
4932379877	Fixtec to SDS - Plus
4932399152	Fixtec to SDS Plus (only suitable for BH 26 LE/LXE)
4932371807	Fixtec to 1/2" x 20 UNF
4932399154	Fixtec to 1/2" x 20 UNF (only suitable for BH 26 LE/LXE)
4932367438	SDS Plus to 1/2" x 20 UNF* Chuck adaptor with direct bit reception (1/4" hex)
4932367166	SDS Plus to 1/2" x 20 UNF *Chuck adaptor with retaining screw

MILWAUKEE BRANDED CHUCKS

PART NUMBER	CAPACITY	THREADS	TYPE
670751001	13mm (1/2")	1/2" X 20	Keyless
670752001	13mm (1/2")	1/2" X 20	Keyless
670753001	10mm (3/8")	1/2" X 20	Keyless
690087008	13mm (1/2")	1/2" X 20	Keyless

MILWAUKEE CORDLESS DRILLS & IMPACT DRILLS USE WHICH CHUCK?

MODEL	PART NUMBER	MODEL	PART NUMBER
C12DD	670753001	PES9.6	4932364613
C12RAD	670753002	PES9.6T	4932376531
C18DD	670751001	PES 12T	4932364613
C18PD	670752001	PES12T OPTION	4932364613
HD18DD-32C	690087008	PES14.4T	4932376533
HD18PD-32C	690087008	PES18T	4932371913
P12P	4932376533	PLD12X (Fixtec)	4932399492
P12T	4932376533	PLD14.4X (Fixtec)	4932399492
P12TX (Fixtec)	4932371913	S12P	4932376533
P12TXC (Fixtec)	4932371913	S12T	4932376533
P14.4T	4932376533	S12TX (Fixtec)	4932371913
P14.4TX (Fixtec)	4932371913	S12TXC (Fixtec)	4932371913
P14.4TXC (Fixtec)	4932371913	S14.4T	4932376533
P18T	4932376533	S14.4TX (Fixtec)	4932371913
P18TX (Fixtec)	4932371913	S14.4TXC (Fixtec)	4932371913
P18TXC (Fixtec)	4932371913	S18P	4932371913
PAD12	4932349457	S18T	4932376533
PDD12X (Fixtec)	4932399214	S18TX (Fixtec)	4932371913
PDD14.4X	4932399214	S18TXC (Fixtec)	4932371913
PEP12T	4932376531	V18DD-LI	4932371913
PEP14.4T	4932376531	V18PD-LI	4932371913
PEP18T	4932371913	V28PD	4932371913

CAULKING GUN ACCESSORIES

FEATURES

- Accessories for models PCG12 and PCG14.4
- Cartridges suit standard user requirements
- The accessories help deliver the power, speed and control needed for all repetitive caulking applications



PART NUMBER	DESCRIPTION
48081075	310ml (10oz) Cartridge Carriage
48081080	400ml (Quart) Cartridge Carriage
48081085	310ml (10oz) Sausage Tube
48081090	600ml (20oz) Sausage Tube
49520600	Plunger Rod (Short for 10oz)
49520650	Plunger Rod (Quart)
49520660	Plunger Rod (Long for 20oz)
45760525	Plastic Nozzle

1/4" HEX ACCESSORIES

HEX DRIVE SETS AND ACCESSORIES

49228510	45242183524	Right Angle Attachment
48321500	45242127733	38 piece QUIK-LOK™ Drill and Drive set (imperial)

49228510

Right Angle Attachment

SPECIFICATIONS

- 1/4" Hex Drive and accessories
- Magnetic
- Max Torque 40 Nm
- For hard to reach places



48321500

38 Piece QUIK-LOK™

SPECIFICATIONS

- Assorted 1/4" Hex Drilling and driving bits
- Carry case



DRILL SIZE CONVERSIONS (IMPERIAL TO METRIC)

FRACTIONAL INCH	ACTUAL METRIC	CLOSEST METRIC
1/64"	0.40	1.00
1/32"	0.79	1.00
3/64"	1.19	1.20
1/16"	1.59	1.60
5/64"	1.98	2.00
3/32"	2.38	2.40
7/64"	2.78	2.80
1/8"	3.18	3.20
9/64"	3.57	3.60
5/32"	3.97	4.00
11/64"	4.37	4.40
3/16"	4.76	4.80
13/64"	5.16	5.20
7/32"	5.56	5.60
15/64"	5.95	6.00
1/4"	6.35	6.40
17/64"	6.75	6.80
9/32"	7.14	7.20
19/64"	7.54	7.60
5/16"	7.94	8.00
21/64"	8.33	8.40
11/32"	8.73	8.80
23/64"	9.13	9.20
3/8"	9.53	9.50
25/64"	9.92	9.90
13/32"	10.32	10.30
27/64"	10.72	10.70
7/16"	11.11	11.10
29/64"	11.51	11.50
15/32"	11.91	12.00
31/64"	12.30	12.30
1/2"	12.70	12.7
33/64"	13.10	13.00
17/32"	13.49	13.50
35/64"	13.89	14.00
9/16"	14.29	14.50
37/64"	14.68	14.50
19/32"	15.08	15.00
39/64"	15.48	15.50
5/8"	15.88	16.00
41/64"	16.27	16.50
21/32"	16.67	16.50
43/64"	17.07	17.00
11/16"	17.46	17.50
45/64"	17.86	18.00
23/32"	18.26	18.00
47/64"	18.65	18.50
3/4"	19.05	19.00
49/64"	19.45	19.50
25/32"	19.84	20.00
51/64"	20.24	20.00
13/16"	20.64	20.50
53/64"	21.03	21.00
27/32"	21.43	21.50
55/64"	21.84	22.00
7/8"	22.23	22.00
57/64"	22.62	22.50
29/32"	23.02	23.00
59/64"	23.42	23.50
15/16"	23.81	24.00
61/64"	24.21	24.00
31/32"	24.61	25.00
63/64"	25.00	25.00
1	25.40	25.40



Nothing but HEAVY DUTY.®

[illegible]

[illegible]



DEALER

www.milwaukeeetools.com.au
www.milwaukeeetools.co.nz

MILWAUKEE AUSTRALIA

Building B, Rosehill Industrial Estate,
3 Shirley Street, Rosehill. NSW 2142.

Local Call: 1300 361 505

Office Free Fax: 1800 807 993

MILWAUKEE NEW ZEALAND

27 Clemow Drive,
Mt Wellington, Auckland.

Phone: 0800 279 624

Fax: 09 9573 0231

The range of products and content shown in this catalogue may vary depending on availability.

Products and specifications may change without notice.

Errors and emissions & exceptions disclaimer and copyright.