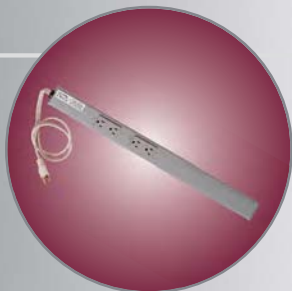


Innovation and Reliability
in Emergency Lighting



NEW
Products

 **LUMACELL**



LER450 Series

4

Triangular Extruded Aluminum Exit Sign



Grande™ Series

6

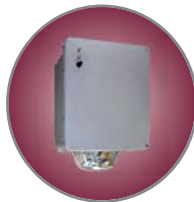
Thermoplastic Combination Unit



Camray™ Battery Unit

8

Illuminating the dark, decorating the day



RGS*NX Battery Unit

10

6, 12 and 24 volts, NEMA-4X rated



FlexPole Model PS & PD

14

A pole for all your needs
Compact, efficient and flexible

New White LED Option

16

Battery and Remote Units

LER450 Series

Triangular Extruded Exit Sign



Features

- Rugged extruded aluminum housing
- Extruded aluminum faceplates
- White finish standard
- Standard field-selectable knockout chevrons
- Long life, energy efficient LED light source
- ALLinGaP technology LED
- CSA certified, meets or exceeds C860 requirements



Typical Specifications

Supply and install the Lumacell LER450 Series of three-face LED exit signs. The equipment shall operate with universal AC input voltage of 120, 277 or 347Vac at less than 2 Watts and universal two-wire DC input voltage from 6Vdc to 24Vdc at less than 3.5 Watts. The housing shall be constructed of rugged extruded Aluminum painted with a factory white finish and shall have three face plates oriented symmetrically at 120 degrees in the horizontal plan. The faceplates shall be constructed of extruded Aluminum and come standard with knockout chevrons. The light source shall be red light emitting diodes (LED) of long-life technology ALINGAP. An LED-sensitive diffuser shall be mounted behind the

legend to provide the 6" high by 3/4" stroke letters with even illumination. Each legend shall be illuminated by one dedicated LED lamp (strip). The LED lamps shall be oriented: two downwards and one upwards and shall provide illumination in normal and emergency operation. Eventual failure of one LED lamp shall not affect the well-functioning of the other two lamps. The Exit sign shall come standard with a pendant kit with a 3/8-in diameter pipe for ceiling-mount installation. The exit sign shall be C860 approved.

The equipment shall be Lumacell model:

_____.

Power Consumption and Unit Rating

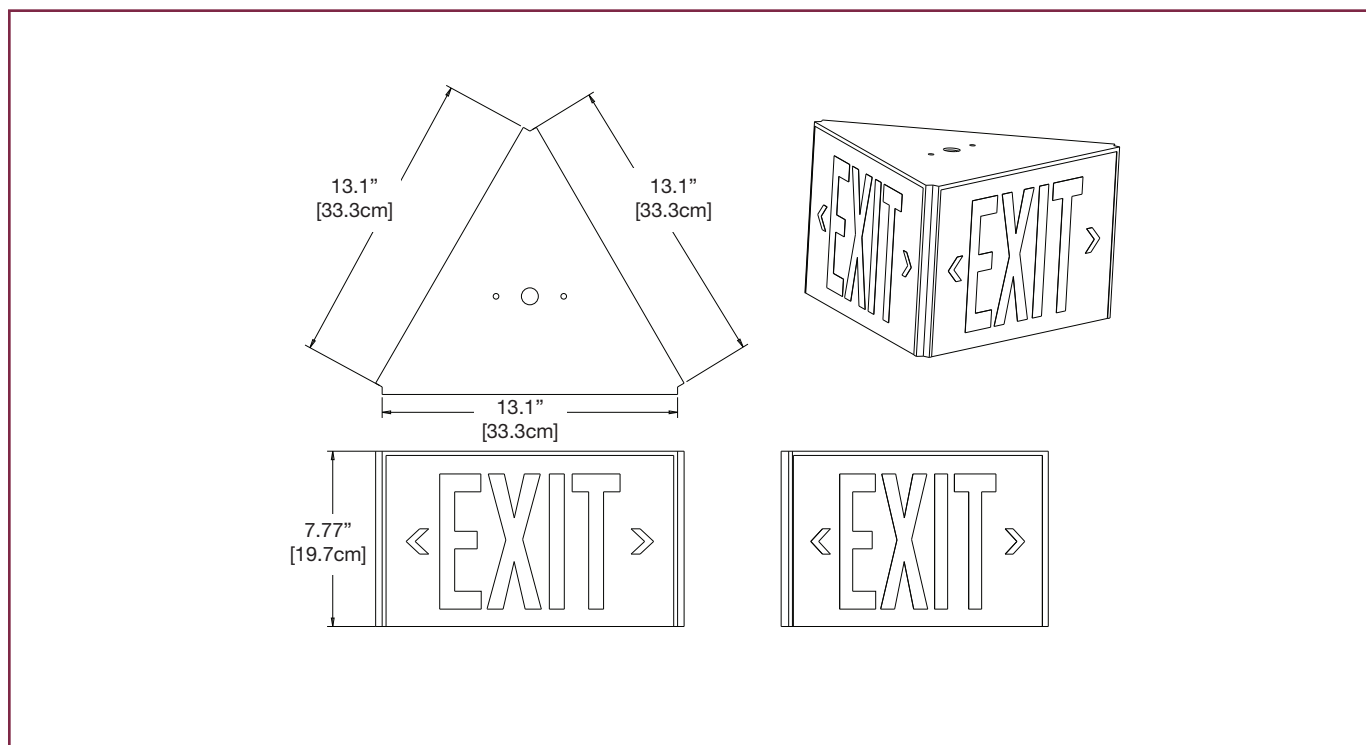
| Model | AC Specs | | DC Specs | |
|--------------------|--------------------|--------------|------------|----------------|
| AC / DC - standard | 120 / 277 / 347Vac | Less than 2W | 6 to 24Vdc | Less than 3.5W |

| | | |
|--------------------|-------------|------|
| Project / Location | | Date |
| Contractor | Prepared by | |
| LUMACELL Model | | |



LER450 SERIES

Dimensions



Ordering Information

| Series | Faces | Colour | Voltage | Options |
|----------------------------------|---|---------------------------------|---|---|
| LER = EXIT Extruded Alum. | 4502S = 2 sided face Wall mounting only) | Blank = factory white | UNIV = 120/277/347Vac, 6 to 24Vdc | TP = tamper proof screws |
| | 4503S = 3 sided face (Pendant mounting only) | | | 990.0119-L = tamper proof bit* |
| | | | | *One bit per order. Sold separately. |

EXAMPLE: LER4503SUNIV

Grande™ Series

Thermoplastic Combination Unit

The **Grande™ Series** of combination units (unit equipment with an exit sign) are designed with aesthetics, ease of installation and performance in mind.



Features

- One-pack combination of battery unit and exit sign, a compact and contemporary design
- Durable injection-molded thermoplastic housing with push-to-snap design
- Available in single or double face configurations both with means for ceiling mounting
- Comes with the Lumacell Grande™ EZ2 canopy and field-selectable snap in/out chevrons for quick and easy installation
- Exit sign module illuminated by long-life ALINGAP red LEDs
- Two MR16 halogen lamps, shielded by a clear polycarbonate cover
- Optional MR16 LED lamps with life expectancy 50,000+ hours
- Sealed, maintenance-free, Lead-Calcium or Nickel-Metal-Hydride batteries
- Remote load capacity, up to 92Watts
- Dual voltage input: 120/347 VAC or 120/277 VAC.
- Optional advanced diagnostic circuitry, flasher/buzzer, fire alarm activated flasher
- Optional vandal resistant shield with tamper proof screws
- Certified CSA C22.2 No141
- Certified CSA C860-01



Typical Specifications

Supply and install the Grande™ Series combination of unit equipment and exit sign. The standard equipment shall operate with a dual voltage input of 120/347VAC. The unit shall be suitable for wall or ceiling mount. The unit frame and face plates shall be made of injection-molded durable high-impact thermoplastic and come standard with snap in/out chevrons. No screws are necessary to hold the faceplate or backplate to the housing. The one piece thermoplastic frame is molded in white (optional black). The faceplates shall feature a uniformly illuminated legend. The light source shall be light emitting diodes (LED) and shall provide illumination in normal and emergency operation and shall be mounted inside the combination housing. Red LED technology shall be ALINGAP. An LED-sensitive diffuser shall be mounted behind the legend to provide the 6" high by 3/4" stroke letters with even illumination. The unit shall be equipped with two emergency heads with tool-less adjustable swivels (lamps of 12W or less) and long-life MR-16 halogen

lamps of ____ V and ____ W. Each lamp shall be protected by a snap-on, shock-absorbent, transparent polycarbonate cover.

The unit shall be equipped with a test switch and a green pilot light, located on the face plate above the EXIT legend. The battery charger shall be driven by a micro-controller. All electronic circuitry (charger, LED driver, LED's) shall be installed on a single printed circuit board PCB. The unit equipped with self-testing / self-diagnostic features shall automatically self test for one minute every 30 days, 10 minutes in the 6th month and 30 minutes annually. When a fault is detected, the bi-color pilot-light shall turn from green to red and shall flash, identifying the source of the failure: battery, charger circuitry, lamp load, LED strip. The exit sign module shall be CSA-C860 approved.

The combo unit shall be Lumacell model:

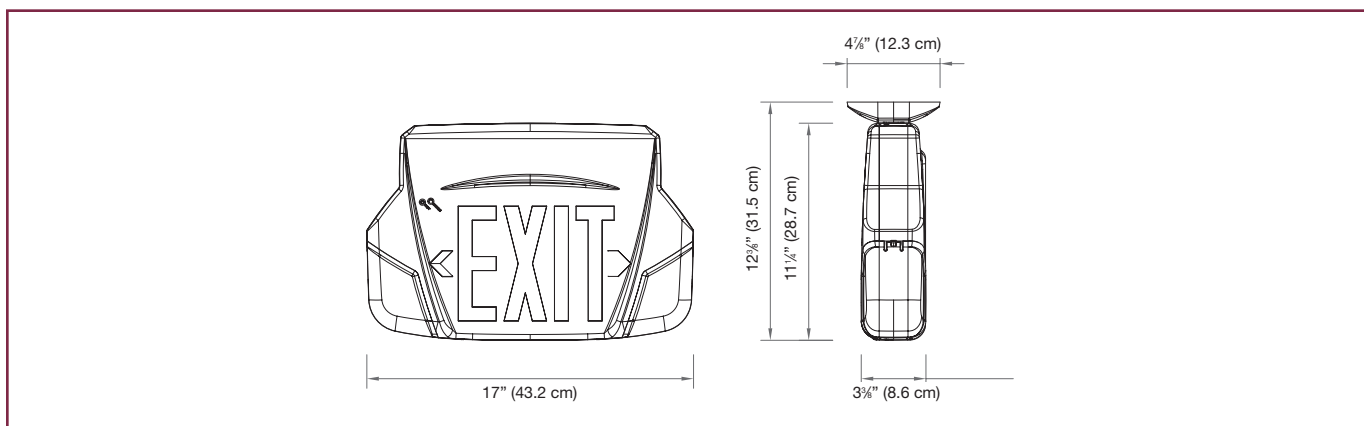
_____.

| | | |
|--------------------|--|-------------|
| Project / Location | | Date |
| Contractor | | Prepared by |
| LUMACELL Model | | |



GRANDE™ SERIES

Dimensions



Power Consumption and Unit Rating

| Model | AC Specs | | Wattage Capacity | | | | |
|------------------|--------------|---------------|------------------|------|------|------|------|
| | | | 30min | 1h00 | 1h30 | 2h00 | 4h00 |
| Exit Sign module | 120 / 347Vac | Less than 2W | - | - | - | - | - |
| 2L | | 0.11/0.04 Amp | 20 | 15 | 12 | 8 | - |
| 5L | | | 50 | 30 | 24 | 16 | 8 |
| 12L5 | | 0.22/0.08 Amp | 50 | 30 | 24 | 16 | 8 |
| 12H5 | | | 50 | 36 | 24 | 18 | 9 |
| 12H10 | | | 100 | 72 | 48 | 36 | 18 |

Ordering Information

| Series | Faces | # of Heads | Head Style Wattage | Colour | Voltage | Legend | Options |
|-----------------------------------|--|----------------------------|---------------------------------|-----------------------------|-----------------------|-------------------------------|---|
| 2L = 6V-20W Lead cal | GRA1 = single face ceiling or wall mount | Blank = no heads | M6 = 6V6W MR16 | W = factory white | 2 = 120/277VAC | Blank = red letters | Blank = no options |
| 5L = 6V-50W Lead cal | GRA2 = double face ceiling mount | 2 = two heads | M10 = 6V or 12V 10W MR16 | B = black | 3 = 120/347VAC | G = green letters | AT = auto test |
| 12L5 = 12V-50W Lead cal | GRA1N = single face wall mount (less canopy) | | M12 = 12V12W MR16 | | | | ATN = auto test non-audible |
| 12H5 = 12V-50W Nimh | | | LD7 = 12V4W LED MR16 | | | | T3 = 15 min time delay |
| 12H10 = 12V-100W Nimh | GRAU = universal 2 faces backplate and canopy | | | | | | |
| | | | | | | | FL = flasher |
| | | | | | | | FA = fire alarm activated flasher |
| | | | | | | | FBF = flasher buzzer + fire alarm activated flasher |
| | | | | | | | VRTP = polycarbonate shield with tamper proof screws |
| | | | | | | | TP = tamper proof screws |
| | | | | | | | BA = brushed aluminum exit stencil |
| | | | | | | | 990.0119-L = tamper proof bit* |
| | | | | | | | *One bit per order sold separately |

EXAMPLE: 2LGRA22M6W3

CAMRAY™ Battery Unit

with white LED normally-on option



Illuminating the dark, decorating the day



Features

- Low profile, slim lines – measures only 6.6” x 9.5”
- Fully gasketed housing, rugged die-cast body and UV-resistant lens
- Fast and easy installation
- Easy to replace Xenon lamps
- Available as a remote fixtures as well
- Optional dual-mode illumination uses 5-watt LED lamp for normal lighting

Dual-mode illumination (optional)

Camray units with this feature include a secondary light source, a 5-watt, 50,000-hour LED lamp dedicated to normal lighting. The equipment has two independent circuits, electrically isolated from each other: the standard input for emergency lighting and a secondary input for normal lighting. The secondary input can be connected to a regular AC line that may include an electrical switch.



Typical Specification

Supply and install the Lumacell Camray Series battery unit. The unit shall be suitable for wall mounting directly on the electrical box, or on the wall surface, using rigid conduit entry at the top of the unit.

The unit body shall be made of die-cast Aluminum with painted color: _____ and a UV and impact resistant polycarbonate lens. The emergency lights shall be two high-output Xenon lamps hosted by a vacuum-plated die-cast reflector. The unit shall be rated 120/347VAC, 60Hz dual input voltage. The battery charger shall include low voltage disconnect to prevent deep discharge, battery lockout to prevent battery drain prior to energizing the utility power, and brownout protection which will automatically switch unit into emergency mode if the utility power falls below 80% of nominal level.

Models with Lead-Calcium battery shall be equipped with a pulse type charging circuitry and shall provide minimum 90 minutes of emergency lighting. The voltage/current-limiting circuitry will minimize energy consumption and shall be factory set with a charging voltage tolerance of $\pm 1\%$ to enable a longer battery life. A red LED pilot light shall indicate AC power.

Models with Nickel Metal Hydride batteries shall be equipped with a non-audible self-test and diagnostic circuit and shall provide minimum 60 minutes of emergency lighting. The unit shall self test for one minute every month, 30 minutes every six months and 90 minutes annually. The pilot light shall be a bi-color LED and shall change color from green to flashing red when a failure is detected from the battery, charger circuit or lamps. A label located near the pilot light shall describe the diagnostic for each flashing code.

Models with dual-mode illumination shall include a power LED lamp with a separate electrical input 120/347Vac for connection to a switched AC line. The LED lamp shall consume less than 5 Watts and shall have an operational life of 50,000 hours, until 70% of initial light level.

The battery unit shall be CSA Certified to C22.2 No.141. The unit shall be Lumacell model:_____.

| | | |
|------------------|--|-------------|
| Project/Location | | Date |
| Contractor | | Prepared by |
| LUMACELL Model | | |

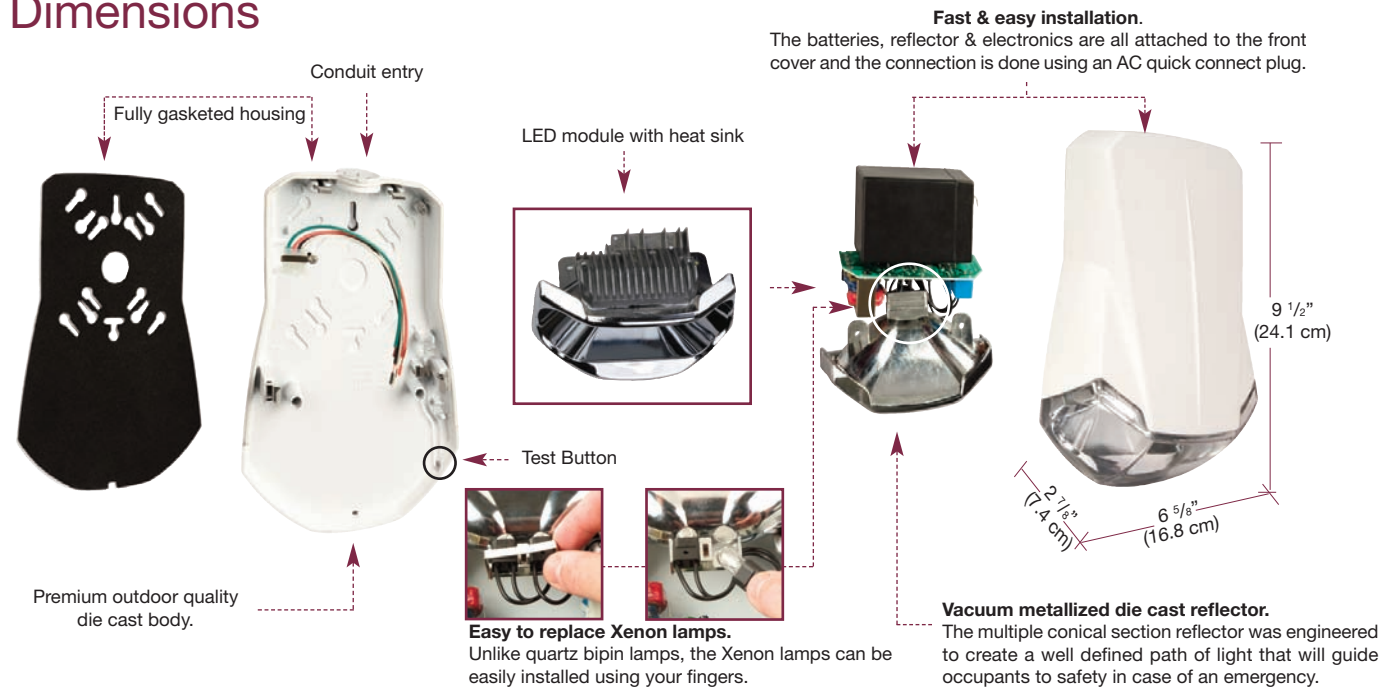


Wire Guard

460.0082-L Wall Mount

CAMRAY™ SERIES

Dimensions



Power Consumption and Unit Rating

| Model | AC Specs | | | DC Specs | |
|----------------------|-------------|---------------|-----------------|---------------------|--------------------|
| CAM12, CAMH12 | 120/347 Vac | 0.11/0.04 Amp | Less than 10.5W | 6V 12W | Minimum 90 minutes |
| CAMH20 | 120/347 Vac | 0.11/0.04 Amp | Less than 10.5W | 6V 20W | Minimum 60 minutes |
| CAM-2 | 120/347 Vac | 0.04 Amp | Less than 5W | LED Normal Lighting | |

Replacement Lamps

| Ordering Code | Type Specifications |
|---------------|-------------------------------|
| 570.0213-L | X6W , 6V - 6W, Xenon |
| 570.0214-L | X10W , 6V - 10W, Xenon |

Ordering Information

| Series | Wattage | Colour | Options |
|--|--------------------------------------|---------------------------|-------------------------------------|
| CAM12 = 6V - 12W, lead calcium battery, standard charger +20°C to +30°C (+68°F to +86°F), 90 minutes | X6W = 6V - 6W, Xenon lamps | OW = off white | T3 = Time delay (15 minutes) |
| CAMH12 = 6V - 12W, NiMH battery - 20°C to +40 °C (-4°F to +104°F) comes with ATN*, min. 60 minutes | X10W = 6V - 10W*, Xenon lamps | BK = black | -2 = dual-mode illumination |
| CAMH20 = 6V - 20W, NiMH battery +20°C to +30°C (+68°F to +86°F) comes with ATN*, min. 60 minutes | | DB = dark bronze | |
| | | PG = platinum grey | |
| <p>*ATN=Auto-Test non-audible</p> <p>*Only available with CAMH20.</p> <p>Other colors available. Please contact your sales representative.</p> | | | |

EXAMPLE: CAM12X6WOW-2

RGS*NX Battery Unit

6, 12 and 24 volts, NEMA-4X rated



Harsh environment emergency lighting units:

The **RGS*NX** Series battery units are specifically designed for use in industrial facilities where equipment is exposed to dust, water, oil or corrosive substances. NEMA-4X standard to protect circuitry from harmful dust or liquid sprays, sealed and gasketed unit made of fiberglass reinforced polyester.

nexus®



NEMA-4X

Features

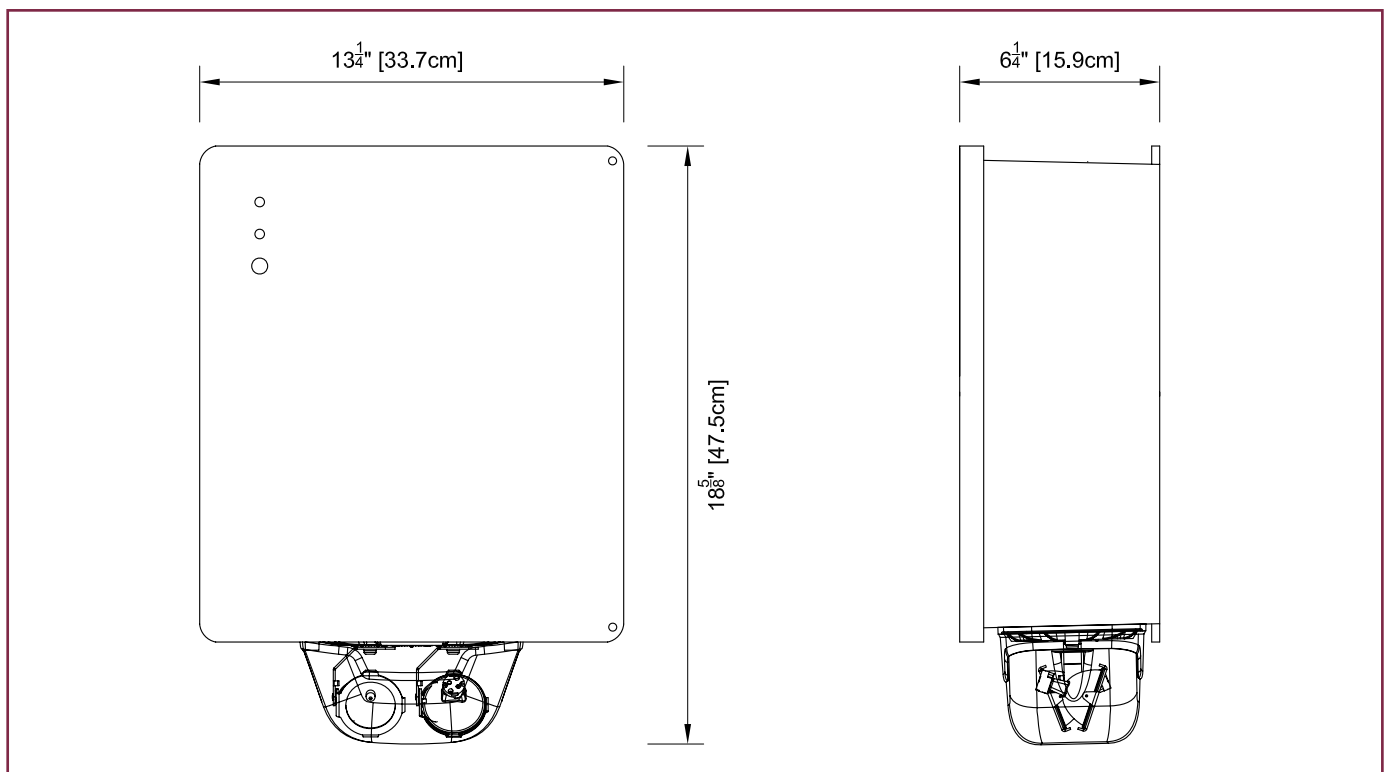
- Delivers great pathway illumination up to 70 feet, center to center (with M20WH lamp)
- Fully gasketed fiberglass reinforced polyester housing - NEMA 4X
- Solid-state pulse-type charger – current-limited, temperature-compensated, short-circuit proof and reverse-polarity protected.
- Unit comes standard with electronic lockout and brownout circuits
- Sealed dust-proof transfer relay, test switch and LED indicator lights
- Long-life, maintenance-free sealed lead acid battery
- Standard 120/347Vac input voltage with line cord kit
- Auto-test and diagnostic (optional)
- **NEXUS®** compatible (for more information on **NEXUS®**, please consult your sales representative)

| | | |
|------------------|--|-------------|
| Project/Location | | Date |
| Contractor | | Prepared by |
| LUMACELL model | | |



RGS*NX SERIES

Dimensions



Wire Guard

460.0034-L Wall Mount

Continued >>

RGS*NX Battery Unit

6, 12 and 24 volts, NEMA-4X Rated



Typical Specification

Supply and install the **Lumacell** NEMA-4X Rated **RGS*NX Series** battery unit. Specifically designed for high abuse areas and wet locations, the fiberglass reinforced polyester housing shall be fully gasketed as well as the clear heavy-duty UV resistant polycarbonate lamp enclosure. The lamps shall be fully adjustable without tools and shall be high efficiency halogen or LED MR16. The Lumacell Smart Diagnostic Micro controller board shall supply the rated load for a minimum of a 1/2 hour to 87.5% of the rated battery voltage. The unit shall be rated 120V or 347V, 60 Hz and shall have an output of _____ volts.

The charger shall be fully computer tested and its charge voltage factory set to $\pm 1\%$ tolerance. Chargers with field-adjusted potentiometers are not acceptable. A pulse-type charger shall be employed to promote long battery life and reduce the potential for grid corrosion. The charger shall provide a continuous high charge to recharge the battery, when the battery is at full capacity, the charger will shut-off. Periodically the charger shall provide a pulse of energy to keep the battery topped off. The Pulse charge shall be current limited and precisely

regulated by a micro-processing circuit, which samples the battery in relation to its temperature, state of charge and input voltage fluctuations. The charger shall be current limited, temperature compensated, short-circuit proof and reverse polarity protected. The unit shall be furnished with an electronic lockout circuit, which will connect the battery when the AC circuit is activated, and an electronic brownout circuit, which will activate the emergency lights when utility power dips below 75% of nominal voltage. A low voltage battery protection circuit shall be provided and will disconnect the battery from the fused output circuit at the end of discharge. The unit shall self-test for 1 minute every 30 days, 10 minutes on the 6th month and 30 minutes every 12 months. The unit shall be capable of full recharge in compliance with CSA specifications. The unit shall be furnished with sealed dust tight relay, a test switch and diagnostic LED indicator lights to continuously monitor the status of the unit: Battery Failure, Battery Disconnected, Charger Failure, Lamp Failure, Service Alarm, AC "ON", Charger High Rate.

The unit shall be Lumacell model: _____.

| | | |
|------------------|--|-------------|
| Project/Location | | Date |
| Contractor | | Prepared by |
| LUMACELL model | | |



RGS*NX SERIES

Power Consumption and Unit Rating

| Model | AC Specs | | Wattage Capacity | | | | |
|------------|-------------|---------------|------------------|------|------|------|------|
| | | | 30min | 1h00 | 1h30 | 2h00 | 4h00 |
| RGS36NX | 120/347 Vac | 0.10/0.04 Amp | 36 | 21 | 15 | 12 | 6 |
| RGS72NX | | 0.22/0.08 Amp | 72 | 42 | 30 | 24 | 12 |
| RGS108NX | | 0.22/0.08 Amp | 108 | 63 | 45 | 36 | 18 |
| RGS180NX | | 0.22/0.08 Amp | 180 | 105 | 75 | 60 | 30 |
| RG12S36NX | 120/347 Vac | 0.09/0.03 Amp | 36 | 21 | 15 | 12 | 6 |
| RG12S72NX | | 0.15/0.06 Amp | 72 | 42 | 30 | 24 | 12 |
| RG12S100NX | | 0.34/0.12 Amp | 100 | 58 | 42 | 33 | 17 |
| RG12S144NX | | 0.40/0.14 Amp | 144 | 84 | 60 | 48 | 24 |
| RG12S200NX | | 0.41/0.14 Amp | 200 | 117 | 83 | 67 | 33 |
| RG12S250NX | | 0.41/0.14 Amp | 250 | 144 | 100 | 83 | 42 |
| RG24S144NX | | 0.55/0.20 Amp | 144 | 84 | 60 | 48 | 24 |
| RG24S288NX | | 0.67/0.23 Amp | 288 | 168 | 120 | 96 | 48 |
| RG24S350NX | 120/347 Vac | 0.67/0.23 Amp | 350 | 200 | 144 | 120 | 60 |

Ordering Information

| Series | Capacity | Housing | # of Heads | Lamp Wattage | A.C. Voltage | Options | |
|--|----------------|------------------------|----------------|-----------------------------|---|--------------------------------|---|
| RGS= 6V | 36= 36 watts | NX= fiberglass NEMA 4X | Blank= no head | M6W= 6V6W MR16 | Blank= 120/347Vac input ZC= 277Vac input | A= ammeter | |
| | 72= 72 watts | | 1= one head | M10W= 6V10W MR16 | | AT= autotest | |
| | 108= 108 watts | | 2= two heads | M12W= 12V12W MR16 | | HTR= heater & thermostat 120V | |
| | 180= 180 watts | | | M20W= 12V, 24V 20W MR16 | | HTR3= heater & thermostat 347V | |
| RG12S= 12V | 36= 36 watts | | | M20HW= 12V, 20W high output | | | LD= lamp disconnect |
| | 72= 72 watts | | | LD7= 12V, 4W LED | | | LTS= light activated test switch |
| | 100= 100 watts | | | | | | NEX*= NEXUS® system interface (6 & 12V only) |
| | 144= 144 watts | | | | | | RRT= remote test reciever |
| | 200= 200 watts | | | | | | T3= time delay 15 Min |
| | 250= 250 watts | | | | | | TMBB= A.C./D.C. terminal block |
| RG24S= 24V | 144= 144 watts | | | | | | TMBD= D.C. terminal block |
| | 288= 288 watts | | | | | | TMBK= A.C. terminal block |
| | 350= 350 watts | | | | | | V= voltmeter |
| *Not all options available with Nexus®. Please consult your sales representative. | | | | | | | |

EXAMPLE: RG24S350NX2M20W

FlexPole Model PS & PD

A pole for all your needs
Compact, Efficient and Flexible



Features

This snap on all aluminum extrusion is 2" x 15/8" comes complete with a metal barrier between the power and communication sections. Our basic model is supplied with two standard Decor Duplex Recepticals 125V – 15A, 3 Decora knockouts (2 front, 1 back). A 10' line cord and plug with 3 # 14SJT wires is supplied for connecting to receptacle in the ceiling.

The ceiling mounting bracket is engineered to fit any inverted T Bar System. The maximum capacity of the communication section is 4-25 pair or 2-50 pair telephone cables. Lumacell standard finish is grey satin baked enamel.



Made in Canada

Our Basic Model (Dual Compartment)

Lumacell Model "PS" and "PD" FlexPole with its efficient concept easily locates electrical, telephone or computer outlets where most needed. When changing open area office layouts the FlexPole is simply unplugged and relocated. The all aluminum extrusion eliminates the nuisance of transient inductions. Installation is complete with an easy to install ceiling mounting bracket with canopy.

Notes

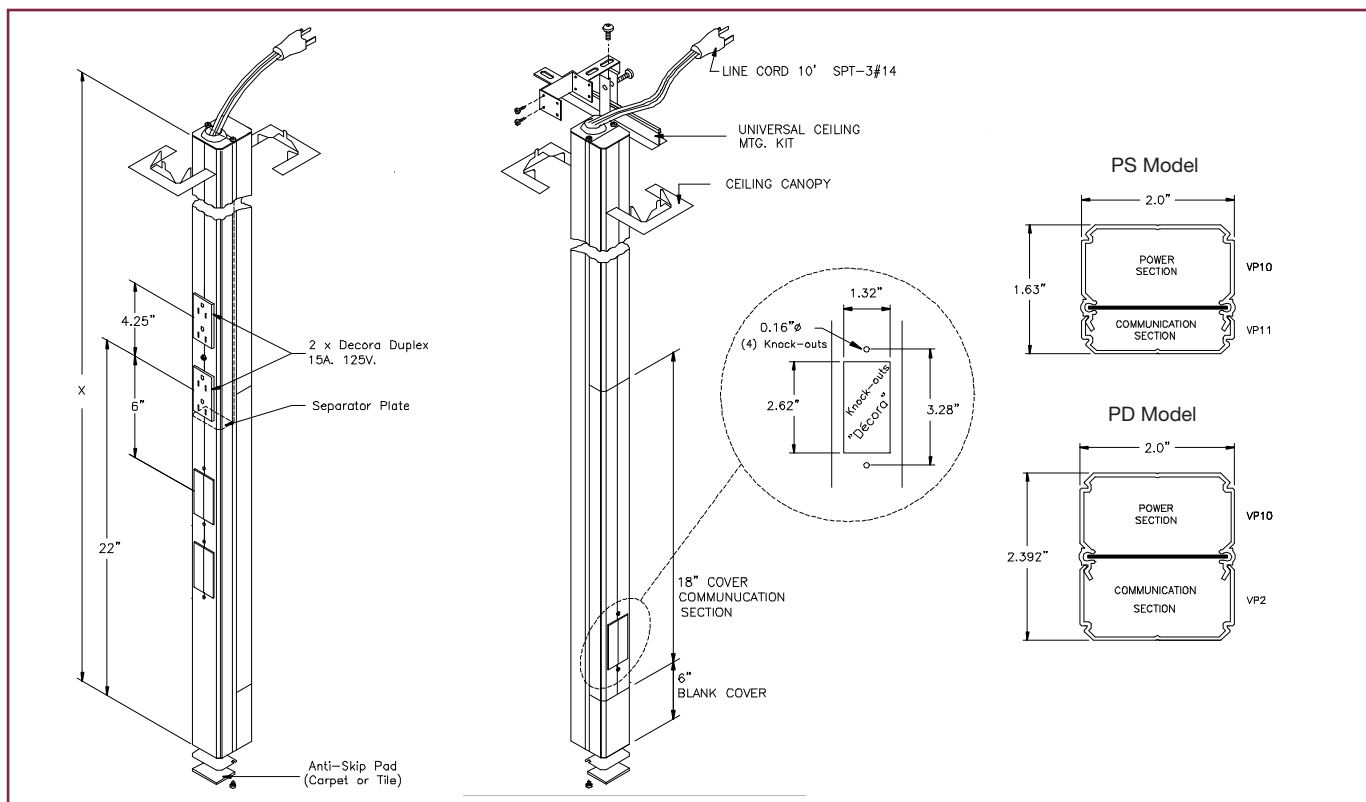
CSA allows a maximum of 2-15A standard duplex receptacles when using a line cord or a maximum of 4 duplex receptacles 15A on 2 separate circuits using a junction box for permanent connection. CSA does not allow use of line cord for isolated ground receptacles. A maximum of 2-IG receptacles per circuit with a maximum of 2 circuits-4 duplex receptacles allowed for isolated ground.

| | | |
|--------------------|--|-------------|
| Project / Location | | Date |
| Contractor | | Prepared by |
| LUMACELL Model | | |



FLEXPOL PS & PD SERIES

Dimensions



Ordering Information

| Series | Pole Height * | Duplex | Options |
|-------------------------------|--|--|---|
| PS = PS series (small) | 86 = 8' 6" | BP = blank pole | DUC = dual circuit |
| | 96 = 9' 6" | R = decora duplex receptacle (specify total qty) * | K = extra decora KO's* (specify extra quantity) |
| | 106 = 10' 6" | | BR = barrier ** |
| | 12 = 12' 0" | IG = isolated ground duplex receptacle (specify quantity) ** | JB = junction box |
| PD = PD series (deep) | 126 = 12' 6" | | W = white finish |
| | 136 = 13' 6" | | *3 decora KO's are standard except on blank pole |
| | 14 = 14' 0" | | ** Barrier is standard except on blank pole |
| | 146 = 14' 6" | | |
| | 15 = 15' 0" | | |
| | * Standard grey. Other heights available | Notes: max 2 duplex per circuit max 2 circuits 15A 125V per pole * R1 and R2 c/w line cord, R3 and R4 c/w junction box and double circuit ** included JB option | Accessories LCFP = replacement line cord MKFP = replacement mounting kit |

NOTE: Certain options may result in longer lead time. Consult your sales representative.

EXAMPLE: PS96BPBR= 9'6" no duplex c/w barrier

EXAMPLE: PS96R2= 9'6" c/w 2 decora duplex, 3 decora K/O

EXAMPLE: PS96R2K1= 9'6" c/w 2 decora duplex, 4 decora K/O

EXAMPLE: PS11R1= 11'0" c/w 1 decora duplex, 3 decora K/O

New!

White LEDs in Emergency Battery Units and Remotes

| | Product | Features | Replacement Lamps | | |
|--|---|--|------------------------|------------------------------|-------------|
| | | | Ordering Code | Type | Volts/Watts |
|  | MQM-NC Series Remote Fixture | <ul style="list-style-type: none"> Quality illumination requires fewer fixtures Shielded to prevent tampering Easy installation Easy Lamp replacement | 580.0079-L | MR16-Flood | 6V - 10W |
| | | | 580.0080-L | | 12V - 12W |
| | | | 580.0077-L | | 24V - 20W |
| | | | 580.0093-L | LED | 12V - 4W |
|  | Saf-T-Ray Series Wall Mount Remote Head | <ul style="list-style-type: none"> Compact wall sconce unit for indoor and outdoor use High impact resistant polycarbonate diffuser Corrosive resistant die-cast aluminum housing Vandal resistant | 570.0079-L | MR16-Flood | 6V - 10W |
| | | | 580.0080-L | | 12V - 12W |
| | | | 580.0077-L | | 24V - 20W |
| | | | 580.0093-L | LED | 12V - 4W |
|  | MT/MQ/MQM Series Micro Tungsten Quartz and MR16 Lamps | <ul style="list-style-type: none"> Variable light patterns using adjustable lens Fire-retardant thermoplastic 300° rotation | 570.0016-L | Tungsten | 6V - 9W |
| | | | 570.0045-L | Tungsten | 24V - 9W |
| | | | 580.0015-L | Halogen (quartz) | 12V - 12W |
| | | | 580.0093-L | LED | 12V - 4W |
|  | Signature® Series Surface Designer Series | <ul style="list-style-type: none"> Remote head: 1, 2 or 3 head configurations Highly-resistant powder-coated, die cast aluminum construction 6W, 10W, 12W, 20W, 35W, and 50W availability | 570.0074-L | MR16-Flood | 6V - 6W |
| | | | 580.0080-L | | 12V - 12W |
| | | | 580.0077-L | | 24V - 20W |
| | | | 580.0093-L | LED | 12V - 4W |
|  | Signature® RSTH Series Remote Collection Recessed Designer Series | <ul style="list-style-type: none"> 6W, 10W, 12W, 20W, 35W, and 50W availability Choice of housing for new construction or insulated ceiling RSTH18NB and RSTH18R are made of powder coated or electro-plated steel RSTH19 is made of die-cast | 580.0079-L | MR16-Flood | 6V - 10W |
| | | | 580.0080-L | | 12V - 12W |
| | | | 580.0077-L | | 24V - 20W |
| | | | 580.0093-L | LED | 12V - 4W |
|  | MQM-NX Series NEMA-4X Certified Remote Fixture | <ul style="list-style-type: none"> Fully gasketed cast aluminum back plate with clear polycarbonate cover – NEMA-4X Certified UV and impact resistant cover, choice of single or double lamp models Available in 6, 12 and 24 volts models with various wattages NSF Certified for food processing plants** | 580.0079-L | MR16-Flood | 6V - 10W |
| | | | 580.0080-L | | 12V - 12W |
| | | | 580.0077-L | | 24V - 12W |
| | | | 580.0093-L | LED | 12V - 4W |
|  | Phantom® Series | <ul style="list-style-type: none"> Remote only visible upon power failure Front can be painted or wall papered on-site to match existing decor | 580.0080-L, 580.0064-L | MR16 flood | 12V-12W-50W |
| | | | 580.0083-L, 580.0076-L | MR16 High-output | 12V-20W-50W |
| | | | 580.0068-L, 580.0090-L | | |
| | | | 580.0089-L | LED | 12V - 4W |
|  | Mini Phantom® Series Fully Concealed, Easy to Retrofit | <ul style="list-style-type: none"> Easy to retrofit in finished walls: the unit slides in through an 8.25-in by 5.75-in hole, open next to a wall stud, no pre-installed back box Output: 12Vdc with up to 100 watts of power Direct connection to 120 or 347Vac power generators | 580.0080-L, 580.0064-L | MR16 flood | 12V-12W-50W |
| | | | 580.0083-L, 580.0076-L | MR16 High-output | 12V-20W-50W |
| | | | 580.0068-L, 580.0090-L | | |
| | | | 580.0089-L | LED | 12V - 4W |
|  | RGC Series 6, 12 and 24 Volts Decorative Battery Units | <ul style="list-style-type: none"> Rugged steel cabinet with corrosion-resistant undercoating Solid-state pulse-type charger – current-limited, temperature-compensated, short-circuit proof and reverse-polarity protected. Electronic lockout and brownout circuits Long-life, maintenance-free lead acid battery, NEXUS® compatible** | 580.0074-L | MR16 - Flood | 6V-6W |
| | | | 580.0079-L | | 6V-10W |
| | | | 580.0093-L | LED | 12V - 4W |
| | | | | | |
|  | RGA Series 6 and 12 Volts Decorative Battery Units | <ul style="list-style-type: none"> Rugged steel cabinet with corrosion-resistant undercoating Solid-state pulse-type charger – current-limited, temperature-compensated, short-circuit proof and reverse-polarity protected Unit comes standard with electronic lockout and brownout circuits Long-life, maintenance-free lead acid battery, NEXUS® compatible** | 580.0074-L | MR16 | 6V - 6W |
| | | | 580.0079-L | | 6V - 10W |
| | | | 580.0080-L | | 12V - 12W |
| | | | 580.0068-L | | 12V - 20W |
| | | | 580.0093-L | LED | 12V - 4W |
|  | RG*NX Series NEMA-4X Certified Battery Unit | <ul style="list-style-type: none"> Fully gasketed cast aluminum back plate with clear polycarbonate cover – NEMA-4X Certified NSF Certified for food processing plants, cold weather option (-40°C) Comes standard with non-audible advanced diagnostic charger board, 10 minute time delay and lamp disconnect Long-life, maintenance free sealed lead acid battery** | 580.0074-L | M6W, MR16, 6V - 6W, flood | |
| | | | 580.0079-L | M10W, MR16, 6V - 10W, flood | |
| | | | 580.0080-L | M12W, MR16, 12V - 12W, flood | |
| | | | 580.0068-L | MH20W, MR16, 12V - 20W | |
| | | | 580.0093-L | LED, 12V - 4W | |

*Please consult Lumacell product catalogue or website for precise lamp ordering information




**For more extensive product information please consult Lumacell product catalogue or website

New! White LEDs in Emergency Battery Units and Remotes



Hazardous Location Series

- Certified Class I Zone 2, Groups IIA, IIB and IIC
- Certified Class I Division 2, Groups A, B, C and D as per CSA C22.2 No.137-M1981

| | Product | Features | Replacement Lamps | | |
|---|---|--|-------------------|------------|-------------|
| | | | Ordering Code | Type | Volts/Watts |
|  | 3LER*HZ Series Combination Unit for Hazardous Locations | <ul style="list-style-type: none"> ● Certified Class I Zone 2, Groups IIA, IIB and IIC ● Certified Class I Division 2, Groups A, B, C and D as per CSA C22.2 No.137-M1981 ● Polymeric frame, with built-in gasket to prevent water infiltration ● Heavy-duty 1/8-inch thick aluminum back plate with key-holes for secure wall-mount installation ● Two MR16 halogen lamps, shielded by a cast aluminum housing and a polycarbonate cover ● Sealed, maintenance-free, Lead-Calcium or Nickel-Cadmium batteries ● Remote load capacity | 580.0079-L | MR16-Flood | 6V - 10W |
| | | | 580.0080-L | | 12V - 12W |
| | | | 580.0077-L | | 24V - 12W |
| | | | 580.0093-L | LED | 12V - 4W |
|  | RG*HZ Series Battery Unit for Hazardous Locations | <ul style="list-style-type: none"> ● Certified Class I Zone 2, Groups IIA, IIB and IIC ● Certified Class I Division 2, Groups A, B, C and D as per CSA C22.2 No.137-M1981 ● Suited for areas with the risk of flammable gases, vapors or liquids that can create an explosive atmosphere ● Two MR16 halogen or LED lamps, shielded by a cast Aluminum housing and a polycarbonate cover ● Sealed, maintenance-free, Lead-Calcium batteries with up to 120W emergency power | 580.0079-L | MR16-Flood | 6V - 10W |
| | | | 580.0080-L | | 12V - 12W |
| | | | 580.0077-L | | 24V - 12W |
| | | | 580.0093-L | LED | 12V - 4W |
|  | MQM*HZ Series Remote Fixture for Hazardous Locations | <ul style="list-style-type: none"> ● Certified Class I Zone 2, Groups IIA, IIB and IIC ● Certified Class I Division 2, Groups A, B, C and D as per CSA C22.2 No.137-M1981 ● Extreme operational temperature range: -40°C to +40°C. ● Input voltage: 6V, 12V, 24V or 120V ● Fully gasketed die-cast aluminum back plate | 580.0079-L | MR16-Flood | 6V - 10W |
| | | | 580.0080-L | | 12V - 12W |
| | | | 580.0077-L | | 24V - 12W |
| | | | 580.0093-L | LED | 12V - 4W |

*Please consult Lumacell product catalogue or website for precise lamp ordering information

**For more extensive product information please consult Lumacell product catalogue or website

Notes

This image shows a single sheet of white paper with horizontal ruling lines. The lines are evenly spaced and run across the width of the page. There are no margins, text, or other markings on the paper.

This image shows a single sheet of white paper with horizontal ruling lines. The lines are evenly spaced and run across the width of the page. There are no margins, text, or other markings on the paper.



www.lumacell.com

All information and specifications contained in this catalogue are subject to change due to engineer design, errors and omissions. Illustrations and diagrams within this catalogue may vary from actual products.

© 2010 Thomas & Betts Limited. All rights reserved.

Printed in Canada. 04/10/1000. Order No.: LU/N-Product-E