

ELECTRIC SCREWDRIVERS CATALOG

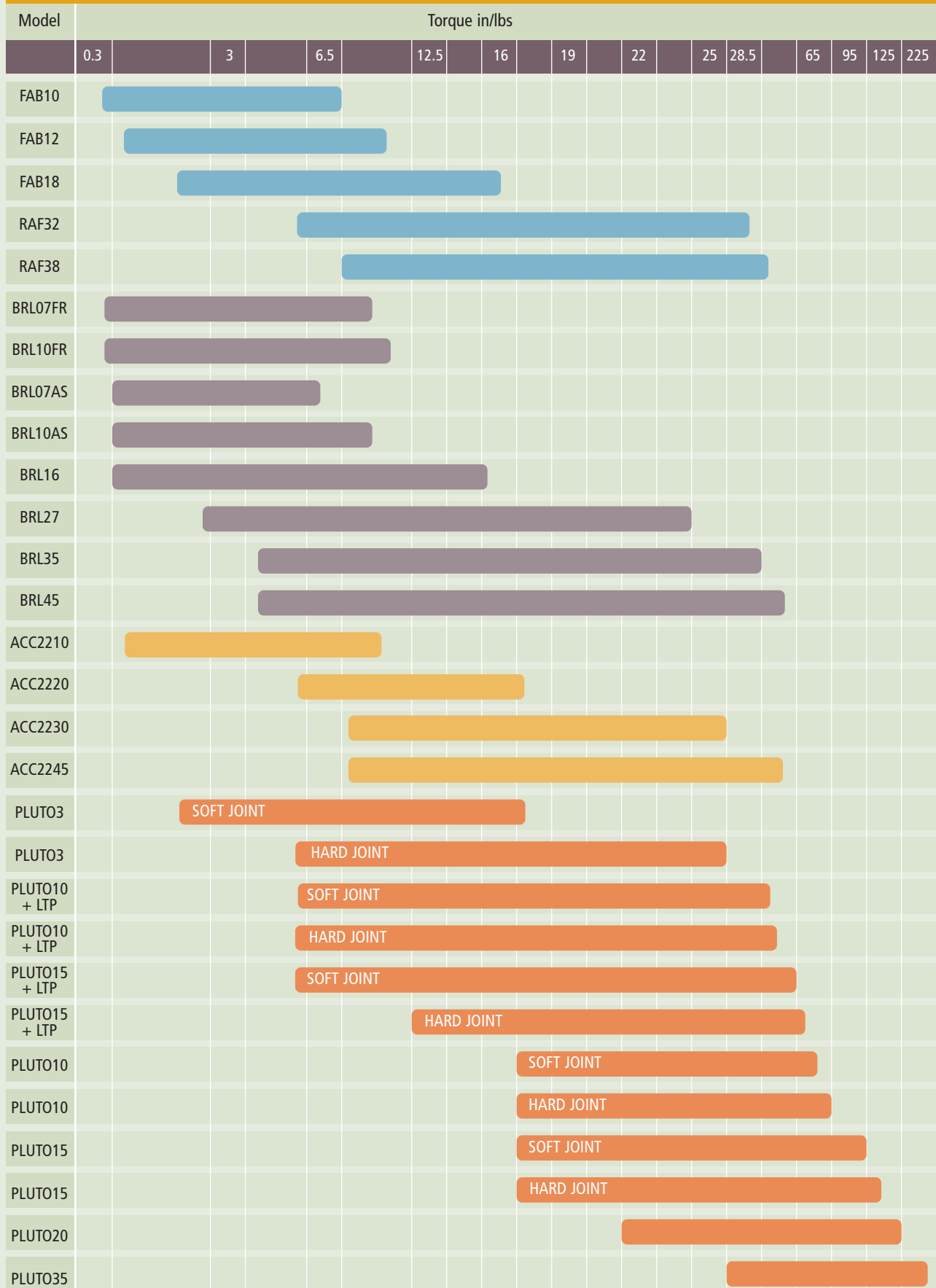
Torque Table Guide

The suggested tightening torque values shown below provide an excellent starting point for determining torque requirements. You may need to increase or reduce these numbers based on the individual joint.

Bolt Size	1-18 Stainless	Brass	Silicon Bronze	Aluminum 2024-T4	316 Stainless	Monel	Nylon
Values (in/lbs)							
2-56	2.5	2.0	2.3	1.4	2.6	2.5	0.4
2-64	3.0	2.5	2.8	1.7	3.2	3.1	
3-48	3.9	3.2	3.6	2.1	4.0	4.0	
3-56	4.4	3.6	4.1	2.4	4.6	4.5	
4-40	5.2	4.3	4.8	2.9	5.5	5.3	1.2
4-48	6.6	5.4	6.1	3.6	6.9	6.7	
5-40	7.7	6.3	7.1	4.2	8.1	7.8	
5-44	9.4	7.7	8.7	5.1	9.8	9.6	
6-32	9.6	7.9	8.9	5.3	10.1	9.8	2.1
6-40	12.1	9.9	11.2	6.6	12.7	12.3	
8-32	19.8	16.2	18.4	10.8	20.7	20.2	4.3
8-36	22.0	18.0	20.4	12.0	23.0	22.4	
10-24	22.8	18.6	21.2	13.8	23.8	25.9	6.6
10-32	31.7	25.9	29.3	19.2	33.1	34.9	8.2
1/4"-20	75.2	61.6	68.8	45.6	78.8	85.3	16.0
1/4"-28	94.0	77.0	87.0	57.0	99.0	106.0	20.8
5/16"-18	132.0	107.0	123.0	80.0	138.0	149.0	34.9
5/16"-24	142.0	116.0	131.0	86.0	147.0	160.0	
3/8"-16	236.0	192.0	219.0	143.0	247.0	266.0	
3/8"-24	259.0	212.0	240.0	157.0	271.0	294.0	
7/16"-14	376.0	317.0	349.0	228.0	393.0	427.0	
7/16"-20	400.0	327.0	371.0	242.0	418.0	451.0	
1/2"-13	517.0	422.0	480.0	313.0	542.0	584.0	
1/2"-20	541.0	443.0	502.0	328.0	565.0	613.0	

KOLVER

Range Overview



F A B & R A F S E R I E S

FAB & RAF Screwdrivers

TORQUE UP TO 33.6 in/lbs

FAB series electric screwdrivers are our “best sellers” for the electronic industry. RAF series screwdrivers are designed to meet higher torque applications.

Their advanced ergonomic design, ease of use, high accuracy and durability have made these drivers the standard by which all others are measured. They are lightweight, compact, powerful and come standard with ESD-safe housing certified to SP method 2472 (Ericsson approved). These screwdrivers are available in an inline body style with either a lever start or push to start or in a pistol grip with a trigger start (also available with the cord coming out from the top - U option) and different speeds, for different assembly requirements.

The torque is set externally: an adjusting nut controls output torque by changing the clutch spring compression. A reference scale will indicate the torque setting. The low voltage 30 VDC rare earth motors combine high performances and long life. Replacing their carbon brushes once a year is all you need for maintenance.

The motor works in combination with a control unit. The electronic control circuit cuts the power supply to the motor in response to the clutch action, as soon as the pre-set torque has been reached. In addition the controller can be supplied with torque reached signal, lever signal, remote start and reverse (see page of control units for all the details) and with ACE screw counter unit.

All FAB and RAF drivers come standard with ESD-safe body, suspension bail and 8.2 ft connection cable. Spiral cable available on request.

The new heavy duty cables and connectors, developed for robotic applications, are made of dissipative material for safe use in an ESD environment.



ANGHD5 (RAF)
ANGHD6 (FAB)

Model	Torque in/lbs	Screw size	RPM max	Start option	Weight lb	L x Ø in	Style
FAB03SS/FR	0.4–4.4	M2.5	650	Lever	1.0	8.9x1.3	Inline
FAB10RE/FR	0.4–7.0	M2.5	1000	Lever	1.1	8.9x1.3	Inline
FAB12RE/FR	1.8–10.6	M3	1000	Lever	1.1	8.9x1.3	Inline
FAB12PS/FR	1.8–10.6	M3	1000	Push start	1.1	8.9x1.3	Inline
FAB12PP/FR	1.8–10.6	M3	1000	Trigger	1.2	7.9x5.9x1.3	Pistol grip
FAB12PP/FR/U	1.8–10.6	M3	1000	Trigger	1.2	7.9x5.9x1.3	Pistol grip with top connector
FAB18RE/FR	2.6–16.0	M4	650	Lever	1.1	8.9x1.3	Inline
FAB18PS/FR	2.6–16.0	M4	650	Push start	1.1	8.9x1.3	Inline
FAB18PP/FR	2.6–16.0	M4	650	Trigger	1.2	7.9x5.9x1.3	Pistol grip
FAB18PP/FR/U	2.6–16.0	M4	650	Trigger	1.2	7.9x5.9x1.3	Pistol grip with top connector
RAF32NS/FR	6.2–28.3	M5	1000	Lever	1.4	9.7x1.6	Inline
RAF32PS/FR	6.2–28.3	M5	1000	Push start	1.4	9.7x1.6	Inline
RAF32PP/FR	6.2–28.3	M5	1000	Trigger	1.5	7.9x5.9x1.3	Pistol grip
RAF32PP/FR/U	6.2–28.3	M5	1000	Trigger	1.5	7.9x5.9x1.3	Pistol grip with top connector
RAF38NS/FR	7.9–33.6	M5	650	Lever	1.4	9.7x1.6	Inline
RAF38PS/FR	7.9–33.6	M5	650	Push start	1.4	9.7x1.6	Inline
RAF38PP/FR	7.9–33.6	M5	650	Trigger	1.5	7.9x5.9x1.3	Pistol grip
RAF38PP/FR/U	7.9–33.6	M5	650	Trigger	1.5	7.9x5.9x1.3	Pistol grip with top connector

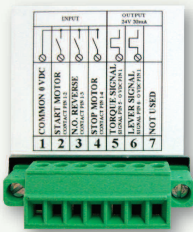
FAB & RAF Control Units

All Kolver screwdrivers work in combination with a control unit acting as an AC to DC transformer and torque controller. The electronic control circuit cuts the power supply to the motor as soon as the pre-set torque has been reached.

The EDU1FR control units for FAB and RAF screwdrivers feature maintenance free state-of-the-art electronics, no wearing components, a circuit design suitable to both lever start and push start drivers, and protection against current overload up to 10A. This design results in very low current to the driver's start switch and clutch switch to extend their life indefinitely. Additional features:

- Suitable for universal power supply from 90 to 260V ac 50/60 hz.
- Slow start (0-2 seconds) and RPM (60% to 100%).
- Visual indicators (green-red) for power on/off and clutch action.
- Reduced weight (1.3 lbs) and compact size for easy placement.
- M12 waterproof connector with silver and gold contacts for perfect conductivity.

The EDU1FR/SG controller features additional circuits wired to one connector in the back panel: output 24V for torque reached and lever signals; input start and reverse contacts. A double output connector (DOCK01) is also available for operators using two screwdrivers on the same working area (only FAB and RAF series). One end of this device is to be connected to the controller (cable included), the other end to the drivers. The screwdrivers may not be used at the same time.



BACK CONNECTOR



ACE SCREW COUNTER



DOUBLE OUTPUT DEVICE WITH CABLE



EDU1CL/FR



TLS POSITIONING ARM

Model	Features	Dimensions in	Weight lb	Screwdriver
EDU1FR	In: 90-260 Vca Out: 18-30 Vcc power 120VA slow start and adjustable speed	5.4x4.6x2.6	1.3	All FAB & RAF
EDU1FR/SG	Input: start and reverse contacts Output: torque reached and lever signal	5.4x4.6x2.6	1.3	All FAB & RAF
EDU1CL/FR	Blank controller	5.4x4.6x2.6	1.3	All FAB & RAF

PLUTO SERIES

PLUTO Screwdrivers

TORQUE UP TO 310 in/lbs

Kolver's ingenuity and experience have led to the development of Pluto (PLU Torque) screwdrivers, the most advanced DC tools in the market, able to reach 310 in/lbs of torque (4 times more than any competitors tool). They feature:

An innovative electric motor concept with low inertia and friction with absence of iron losses for extreme efficiency and extended life. Planetary gearboxes with high quality composite materials. Pistol grip to fit operator's hand ergonomically.

A weight of 1.1 lbs to reduce operator's fatigue. Fully electronic torque control system, manually set by a dial on the controller, to shut the tool off automatically once the preset torque has been reached. The Pluto Series is ideal for high volume applications where millions of cycles at high torque are required. The Pluto

Series is available in a molded pistol grip with the cord set exiting from the top (U option) or bottom, or in a standard inline housing with lever start. ESD-safe housing is standard. All Pluto Series electric screwdrivers come standard with suspension bail and 8.2 ft connection cable. Spiral cable available on request. The new heavy duty cables and connectors, developed for robotic applications, are made of dissipative material for safe

use in an ESD environment.

Also available Torque and Angle models, see T&A for details. Pluto 20CA (177 in/lbs) and Pluto 35CA (310 in/lbs) available on request with auxiliary external housing (IMPEXT). See accessories for details. Pluto drivers are the real alternative to the pneumatic screwdriver.



ACE SCREW COUNTER



TLS POSITIONING ARM



TUBE NUT



CROWS FOOT

Model	Torque in/lbs EDU1AE	Torque in/lbs EDU1AE/LTP	RPM max EDU1AE	RPM max EDU1AE/LTP	Weight lb	Dimensions in	Controller	Style
PLUTO3D	–	2.6–26.5	–	1200	1.1	8.5x1.6	EDU1AE/LTP	Inline
PLUTO3P	–	2.6–26.5	–	1200	1.1	5.9x5.9x1.8	EDU1AE/LTP	Pistol grip
PLUTO3R/C	–	2.6–26.5	–	1200	varies	varies	EDU1AE/LTP	Crows foot
PLUTO3R/T	–	2.6–26.5	–	1200	varies	varies	EDU1AE/LTP	Tube nut
PLUTO3R/N	–	2.6–26.5	–	1200	2.0	10.5x1.6	EDU1AE/LTP	Inline right angle
PLUTO10D/N	18.0–88.5	5.3–35.4	600	400	1.1	8.5x1.6	EDU1AE & EDU1AE/LTP	Inline
PLUTO10P/N	18.0–88.5	5.3–35.4	600	400	1.1	5.9x5.9x1.8	EDU1AE & EDU1AE/LTP	Pistol grip
PLUTO10P/U/N	18.0–88.5	5.3–35.4	600	400	1.1	5.9x5.9x1.8	EDU1AE & EDU1AE/LTP	Pistol grip w/top connector
PLUTO10R/C	18.0–88.5	5.3–35.4	600	400	varies	varies	EDU1AE & EDU1AE/LTP	Crows foot
PLUTO10R/T	18.0–88.5	5.3–35.4	600	400	varies	varies	EDU1AE & EDU1AE/LTP	Tube nut
PLUTO10R/N	18.0–88.5	5.3–35.4	600	400	2.0	10.5x1.6	EDU1AE & EDU1AE/LTP	Inline right angle
PLUTO15D/N	18.0–132.8	5.3–60.2	320	220	1.1	8.5x1.6	EDU1AE & EDU1AE/LTP	Inline
PLUTO15P/N	18.0–132.8	5.3–60.2	320	220	1.1	5.9x5.9x1.8	EDU1AE & EDU1AE/LTP	Pistol grip
PLUTO15P/U/N	18.0–132.8	5.3–60.2	320	220	1.1	5.9x5.9x1.8	EDU1AE & EDU1AE/LTP	Pistol grip w/top connector
PLUTO15R/C	18.0–132.8	5.3–60.2	320	220	varies	varies	EDU1AE & EDU1AE/LTP	Crows foot
PLUTO15R/T	18.0–132.8	5.3–60.2	320	220	varies	varies	EDU1AE & EDU1AE/LTP	Tube nut
PLUTO15R/N	18.0–132.8	5.3–60.2	320	220	2.0	10.5x1.6	EDU1AE & EDU1AE/LTP	Inline right angle

PLUTO SERIES

PLUTO Control Units

All Kolver screwdrivers work in combination with a control unit acting as an AC to DC transformer and torque controller. The electronic control circuit cuts the power supply to the motor as soon as the pre-set torque has been reached.

For the Pluto Series the EDU1AE gives you all the advantages of precision torque controlled electric tools at a fraction of the price of transducerized tools. The microprocessor based unit cuts the power supply to the motor calculating the correct torque in response to 3 parameters; voltage, frequency and current, according to the selected options.

Additional features:

- One controller only for a torque range from 17.7 to 310 in/lbs. For lower torque values: EDU1AE/LTP model.
- User interface screens: walk through a few simple steps to input the parameters requested for your application and your fastening process can begin.
- Slow start and adjustable speed.
- Soft or hard joint option.
- High speed rundown and slow speed tightening for improved accuracy.
- Autostop on elapsed time, automatic reverse at cycle end with adjustable time stop.
- Torque reached signal and lever signal, remote start and reverse contacts.
- Serial port for data downloading available on request for all models.
- ACE screw counter to monitor for fastening assembly process.

The EDU1AE/TOP and EDU1AE/TOP/LTP multiple torque system is designed to expand the functionality of the PLUTO screwdriver and its controller by enabling easy access to multiple torque settings with one EDU1AE controller and one Pluto driver only.

Main features:

- One controller only for a torque range from 17.7 to 310 in/lbs. For lower torque values: EDU1AE/TOP/LTP model.
- User interface screens.
- 8 independent programs: with one PLUTO screwdriver you can replace 8 conventional screwdrivers.
- Each program can accept the following settings: Torque, Speed, Type of Joint, Number of Screws to be tightened, Number of Rejects allowed, Minimum screwing time, Maximum screwing time, Ramp time, Auto reverse, Auto switch to the next program with any sequence, Allow or Prevent reverse option.
- Password protected.
- Statistics menu with summary of work done: total number of cycles performed correctly and wrongly; at the end of the day you'll know how many cycles have been performed correctly, how many wrongly, total number of screws, etc.
- 15 input and 11 output connectors: you can control all functions from PLC.
- USB port as option.
- Options also include Socket tray or Switch box: for programs to be selected from the TOP unit by the removal of one of eight bit from the tray or by the push of one of eight buttons.



EDU1AE



EDU1AE/TOP



SOCKET TRAY



SWITCH BOX

Model	Features	Dimensions in	Weight lb
EDU1AE	Programmable with user interface screens	7.3x4.9x3.7	6.9
EDU1AE/LTP	Lower torque and speed	7.3x4.9x3.7	6.9
EDU1AE/C	Remote double torque selection	7.3x4.9x3.7	6.9
EDU1AE/MT	Max torque time option	7.3x4.9x3.7	6.9
EDU1AE/LTP/MT	Max torque time option - Lower torque and speed	7.3x4.9x3.7	6.9
EDU1AE/TOP	With programmable system - 8 different programs	9.3X4.7X8.2	8.8
EDU1AE/TOP/LTP	With programmable system - 8 different programs Lower torque and speed	9.3X4.7X8.2	8.8
EDU1AE/TOP/MT	With programmable system - 8 different programs Max torque time option	9.3X4.7X8.2	8.8
EDU1AE/TOP/LTP/MT	With programmable system - 8 different programs Max torque time option - Lower torque and speed	9.3X4.7X8.2	8.8

C A S E R I E S

CA Screwdrivers

The CA screwdrivers are designed for automated and fixtured applications. Special wiring and dedicated controllers are equipped with electric signals and contacts for immediate and easy interface. The ideal alternative to pneumatic drivers, they feature a long life maintenance free electric motor with a unique electronic torque control system for high accuracy throughout a wide torque range (up to 310 in/lbs); an aluminum body, for easy and quick clamp, supplied with 8.2 ft cable.

The PLUTO..CA/FN Series incorporates the PLUTO DC-controlled electric screwdriver design, supplied in an inline aluminum housing for flange mounting applications. The DC motor and solid state controls of the PLUTO are ideal for automated high volume/high duty applications.

Flange and telescopic spindle available together or separately.



PLUTO..CA/FN

Model	Torque in/lbs	RPM max	L x Ø in	Output	Control unit
PLUTO3CA	2.6–26.5	1200	6.3x1.6	Hex. 1/4"	EDU1AE/LTP
PLUTO10CA/N	5.3–35.4 17.7–88.5	400 600	6.3x1.6	Hex. 1/4"	EDU1AE/LTP EDU1AE
PLUTO15CA/N	5.3–60.2 17.7–132.0	220 320	6.3x1.6	Hex. 1/4"	EDU1AE/LTP EDU1AE
PLUTO20CA	22.0–177.0	210	7.8x1.9	Sq. 3/8"	EDU1AE
PLUTO35CA	26.5–310.0	140	8.1x2.2	Sq. 3/8"	EDU1AE
PLUTO3CA/FN	2.6–26.5	1200	10.1x1.6	Hex. 1/4"	EDU1AE/LTP
PLUTO10CA/FN	5.3–35.4 17.7–88.5	400 600	10.1x1.6	Hex. 1/4"	EDU1AE/LTP EDU1AE
PLUTO15CA/FN	5.3–60.2 17.7–132.0	220 320	10.1x1.6	Hex. 1/4"	EDU1AE/LTP EDU1AE
PLUTO20CA/FN	22.0–177.0	210	10.9x1.6	Sq. 3/8"	EDU1AE
BRL07AS/CA	0.9–6.2	1000	7.1x1.3	Hex. 1/4"	EDU1BR/SG
BRL10AS/CA	0.9–8.8	650	7.1x1.3	Hex. 1/4"	EDU1BR/SG
BRL16AS/CA	0.9–14.1	450	7.1x1.3	Hex. 1/4"	EDU1BR/SG
BRL27AS/CA	2.6–23.9	1200	1.2x1.6	Hex. 1/4"	EDU2BR/SG
BRL35AS/CA	4.4–31.0	800	1.2x1.6	Hex. 1/4"	EDU2BR/SG
BRL45AS/CA	4.4–49.0	540	1.2x1.6	Hex. 1/4"	EDU2BR/SG
BRL07FR/CA	0.4–8.8	1000	8.4x1.4	Hex. 1/4"	EDU1BR/SG
BRL10FR/CA	0.4–10.6	650	8.4x1.4	Hex. 1/4"	EDU1BR/SG
BRL27FR/CA	2.6–23.9	1200	9.0x1.6	Hex. 1/4"	EDU2BR/SG
BRL35FR/CA	4.4–31.0	800	9.0x1.6	Hex. 1/4"	EDU2BR/SG

CA Control Units

All Kolver screwdrivers work in combination with a control unit acting as an AC to DC transformer and torque controller. The electronic control circuit cuts the power supply to the motor as soon as the pre-set torque has been reached.

For the Pluto..CA Series the EDU1AE gives you all the advantages of precision torque controlled electric tools at a fraction of the price of transducer tools. The microprocessor based unit cuts the power supply to the motor calculating the correct torque in response to 3 parameters, voltage frequency and current, according to the selected options.



EDU1AE



TELESCOPIC SPINDLE



MULTI SPINDLE

Additional features:

- One controller only for a torque range from 17.7 to 310 in/lbs. For lower torque values: EDU1AE/LTP model.
- User interface screens: walk through a few simple steps to input the parameters requested for your application and your fastening process can begin.
- Slow start and adjustable speed.
- Soft or hard joint option.
- High speed rundown and slow speed tightening for improved accuracy.
- Autostop on elapsed time, automatic reverse at cycle end with adjustable time stop.
- Torque reached signal and lever signal, remote start and reverse contacts.
- Serial port for data downloading available on request for all models.
- ACE screw counter to monitor for fastening assembly process.

The EDU1BR/SG and EDU2BR/SG control units for BRL..CA screwdrivers feature a maintenance free state-of-the-art electronics with no wearing components.

They come standard with:

- Torque knob to adjust the torque with current control tools.
- Selection of two ranges of torque through a switch in the front panel: L (from 0 to 30% of the torque range) and H (from 20 to 100%)
- Slow start (0-2 sec) and adjustable speed (60% to 100%).
- Visual indicators (green-yellow-red) for power on/off, torque reached or not reached.
- Input: Start and Reverse contacts.
- Output: 24 V for torque reached and lever signals.

ALL EDUBR controllers can drive either current control tools and clutch tools.

In particular:

- EDU1BR/SG are intended for use with BRL07, 10 & 16 AS and BRL07, 10FR.
- EDU2BR/SG are intended for use with BRL27, 35 & 45 both AS and FR.

Model	Features	Dimensions	Weight in	Screwdriver lb
EDU1AE	Programmable with user interface screens	7.3x4.9x3.7	6.9	PLUTO
EDU1AE/LTP	Lower torque and speed	7.3x4.9x3.7	6.9	PLUTO
EDU1AE/C	Remote double torque selection	7.3x4.9x3.7	6.9	PLUTO
EDU1AE/MT	Max torque time option	7.3x4.9x3.7	6.9	PLUTO
EDU1AE/LTP/MT	Max torque time option - Lower torque and speed	7.3x4.9x3.7	6.9	PLUTO
EDU1AE/TOP	With programmable system - 8 different programs	9.3x4.7x8.2	8.8	PLUTO
EDU1AE/TOP/LTP	With programmable system - 8 different programs Lower torque and speed	9.3x4.7x8.2	8.8	PLUTO
EDU1AE/TOP/MT	With programmable system - 8 different programs Max torque time option	9.3x4.7x8.2	8.8	PLUTO
EDU1AE/TOP/LTP/MT	With programmable system - 8 different programs Max torque time option - Lower torque and speed	9.3x4.7x8.2	8.8	PLUTO
EDU1BR/SG	Slow start and adjustable speed, INPUT: start and reverse contacts, external stop and L/H torque switch OUTPUT: torque reached & lever & error signals	5.3x7.1x2.6	2.1	BRL07,10 & 16
EDU2BR/SG	Slow start and adjustable speed, INPUT: start and reverse contacts, external stop and L/H torque switch OUTPUT: torque reached & lever & error signals	5.3x7.1x2.6	2.1	BRL27,35 & 45

BRUSHLESS SERIES

BRUSHLESS Screwdrivers

TORQUE 0.45 TO 40 in/lbs

BRL Series electric screwdrivers feature state-of-the-art brushless motors and clutchless torque control, the perfect solution for clean room applications thanks to zero emissions of carbon and other pollutants into the working environment. Extremely small and lightweight for utmost operator comfort and with advanced ergonomic design, they ensure very low noise level, minimum vibrations, maximum safety (low supply voltage), lasting performance as well as maintenance free operation.

BRL screwdrivers are available either with current control system (AS series) or with mechanical clutch (FR series). In both cases the electronic controller (EDUBR series) will cut the power supply to the motor as soon as the pre set torque has been reached.

BRL are available in an inline body style with lever start or pistol grip option (on request also available with the cord coming out from the top - U option).

BRL models with a wide range of torque and speed to cover many different assembly requirements.

All BRL drivers come standard with an ESD-safe body, 8.2 ft connection cable and suspension bail. The heavy duty cables and connectors, developed for robotic applications, are made of antistatic dissipative material for a safe use in EPA environment.

The absence of maintenance operations guarantees high productive continuity.



AUTOMATION
MODEL



8 PIN CABLE

Model	Torque in/lbs	RPM max	Weight lb	L x Ø in	Controller	
BRL07AS	0.9-6.2	1000	0.8	8.1x1.3	EDU1BR	EDU1BR/SG
BRL10AS	0.9-8.8	650	0.8	8.1x1.3	EDU1BR	EDU1BR/SG
BRL16AS	0.9-14.1	450	0.8	8.1x1.3	EDU1BR	EDU1BR/SG
BRL27AS	2.6-23.9	1200	1.2	9.1x1.6	EDU2BR	EDU2BR/SG
BRL35AS	4.4-31.0	800	1.2	9.1x1.6	EDU2BR	EDU2BR/SG
BRL45AS	4.4-40.0	540	1.2	9.1x1.6	EDU2BR	EDU2BR/SG
BRL07FR	0.4-8.8	1000	1.1	8.9x1.4	EDU1BR	EDU1BR/SG
BRL10FR	0.4-10.6	650	1.1	8.9x1.4	EDU1BR	EDU1BR/SG
BRL27FR	2.6-23.9	1200	1.5	9.7x1.6	EDU2BR	EDU2BR/SG
BRL35FR	4.4-31.0	800	1.5	9.7x1.6	EDU2BR	EDU2BR/SG

B R U S H L E S S S E R I E S

BRUSHLESS Control Units



All Kolver screwdrivers work in combination with a control unit acting as an AC to DC transformer and torque controller. The electronic control circuit cuts the power supply to the motor as soon as the pre-set torque has been reached.

The EDU1BR and EDU2BR control units for BRL screwdrivers feature a maintenance free state-of-the-art electronics with no wearing components. They come standard with the torque knob to adjust the torque of current control tools and the selection of two ranges of torque through a switch in the front panel: L (from 0 to 30% of the torque range) and H (from 20 to 100%).

The EDU1BR/SG and EDU2BR/SG controllers additionally feature slow start (0-2 sec), adjustable speed (60% to 100%) and visual indicators (green-yellow-red) for power on/off, torque reached or not reached.

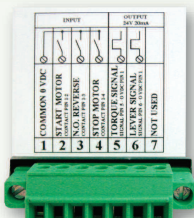
Additional features:

- Output 24 V for torque reached and lever signals; input start and reverse contacts.

All EDUBR controllers can drive either current control tools and clutch tools.

In particular:

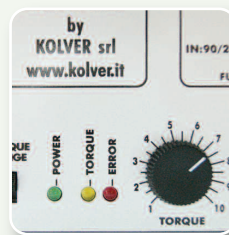
- EDU1BR and EDU1BR/SG are intended for use with BRL07, 10 & 16 AS and BRL07, 10FR.
- EDU2BR and EDU2BR/SG are intended for use with BRL27, 35 & 45 both AS and FR.



BACK CONNECTOR



ACE SCREW COUNTER



TORQUE ADJUSTMENT



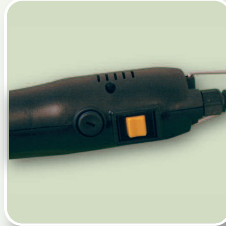
TLS POSITIONING ARM

Model	Features	Dimensions in	Weight lb	Screwdriver
EDU1BR	In: 90-260 Vca OUT: 36 VDC-120VA-adjustable torque	5.3x7.1x2.6	2.1	BRL07, 10 & 16
EDU1BR/SG	Slow start and adjustable speed, INPUT: start and reverse contacts, external stop and L/H torque switch OUTPUT: torque reached & lever & error signals	5.3x7.1x2.6	2.1	BRL07, 10 & 16
EDU2BR	In: 90-260 Vca OUT: 36 VDC-120VA-adjustable torque	5.3x7.1x2.6	2.1	BRL27, 35 & 45
EDU2BR/SG	Slow start and adjustable speed, INPUT: start and reverse contacts, external stop and L/H torque switch OUTPUT: torque reached & lever & error signals	5.3x7.1x2.6	2.1	BRL27, 35 & 45

A C C S E R I E S

ACC Screwdrivers

ACC screwdrivers with shut off torque control through mechanical clutch are direct plug-in tools with built-in PCB for automatic cut off and AC to DC rectifier. They are ideal for applications where portability is needed to minimize costly set-up time. ACC models have the unique feature of selectable push to start or push and lever start. To select the working mode just slide the switch located by the start lever.



3 POSITIONS REVERSE SWITCH



TORQUE ADJUSTING NUT COVER

Model	Torque in/lbs	Screw size	RPM max	Weight lb	L x Ø in	Voltage cc
ACC2210	1.7-8.8	M3	950	1.6	10.1x1.4	230 Vca
ACC2220	6.2-17.7	M4	950	1.8	10.1x1.4	230 Vca
ACC2230	8.8-26.5	M5	950	1.9	10.4x1.5	230 Vca
ACC2245	8.8-39.8	M5	450	1.9	10.4x1.5	230 Vca

M I C R O T O O L S

Micro Tool Torque Limiting Screwdrivers

These manual torque drivers are designed for customers that require a precision, preset, manual torque screwdriver.



- Designed and tested to meet or exceed ISO 6789 specifications.
- 1/4" female hexagon bit socket.
- Torque driver can be set to a customer specified torque value prior to shipping.
- Cam mechanism with suspended adjustable thrust and axial bearings.
- Optional soft grip handle.



Stainless Steel Torque Screwdrivers

- 300 Series Stainless Steel components including handle.
- Sealed ball bearings fitted to contain all lubricants.
- Torque driver exceeds class 100 clean room environments.

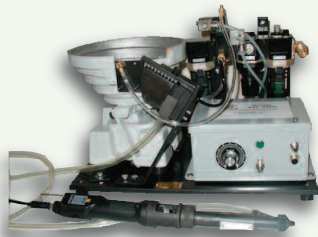
Products Model	Color	Torque Range in/lbs	Weight oz	Dimensions LengthxDiameter
MT-1	Red	0.5-16.0 in/oz	1.9	3.1 x 0.7
MT-1SS	Stainless	0.5-16.0 in/oz	1.9	3.1 x 0.7
MT-2	Yellow	0.7-32.0 in/oz	2.1	3.6 x 0.7
MT-3	Blue	3.0 in/oz-12.0 in/lb	5.9	4.4 x 1.1
MT-3SS	Stainless	3.0 in/oz-12.0 in/lb	5.9	4.4 x 1.1
MT-4	Green	8.0 in/oz-36.0 in/lb	6.5	4.9 x 1.1

P R E S E N T E R S & A C C E S S O R I E S

Screw Presenter NFK Series



Model	Max Shank Ø in	Screw Length min in	Screw Length max in
NFK 514	0.06	0.07	0.4
NFK 517	0.07	0.07	0.4
NFK 520	0.08	0.10	0.7
NFK 523	0.09	0.11	0.7
NFK 526	0.10	0.14	0.7
NFK 530	0.12	0.16	0.7
NFK 540	0.16	0.20	0.7
NFK 550	0.20	0.24	0.7
NFK 707	0.05–0.20	0.07	0.7

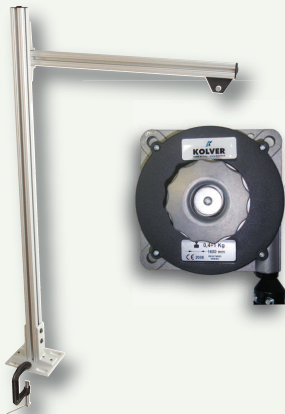


KSF-5000 Automatic Screw Feeder

Autofeed hand screwdrivers are simple and reliable systems where the screw or nut is automatically fed into the driver collet head. The automatic downstroke reduces operator fatigue, dramatically increasing assembly rate and productivity.

You can feed and tighten machine and self-tapping screws, nuts, studs and any other threaded fasteners, with or without washers.

KSF-5000 may be used with FAB, RAF, or PLUTO series drivers.



Pivoting Arm and Tool Balancer

ARM PV2 support arm consists of a 4' vertical upright, and a 2' horizontal support arm. The horizontal arm moves a full 180°, and has a moveable tool trolley the full 2' length. It is equipped with a support base for attaching to the work surface, or an optional C clamp for areas where no drilling is allowed. TEC BA1 Tool Balancer has a capacity of 4.41 lb, and allows screwdrivers to be positioned over the workstation for maximum operator comfort. Additional models with capacity up to 397 lb are available.



Vacuum Adaptor Kit Series and Pump

VA-250K Vacuum Adaptors are designed to work with our FAB, RAF, and PLUTO Series drivers. The kit consists of a threaded vacuum adaptor assembly with outlet for hose, small installation tool, and a 6' plastic vacuum hose with fittings. Interchangeable screw finders, machined to customer screw head specifications, are sold separately.

Model #3-0170-0006 is a self-contained vacuum pump, drawing 25" of mercury. Optional dual port connector is available for powering 2 vacuum units.

TORQUE TESTER - K SERIES

TORQUE TESTER - K Series

The K Series is a totally new class of analyzers. They feature a built-in transducer and also have the unique ability to connect to an external transducer. Using a high performance circuitry they collect, store and eventually download torque measures for a complete analysis of the tool and/or the joint. Priced at a low level, this tester has become popular among those companies wishing to improve their product quality through the precise control of torque.



- User friendly menu.
- Accuracy: $\pm 0,5\%$ of the displayed value.
- Internal transducer for tests on a joint simulator (supplied with the unit).
- Connection for external transducer (transducer not included).
- 500 readings memory.
 - Selection among Nm, Ncm, Kg.cm, in, lbs.
 - RS232C output (cable not included).
 - Indication \Leftrightarrow of the preset values.
 - Output signal at preset reached value.
- Clockwise and counter-clockwise measurement.
- 3 models of operation: Peak +, Peak -, Track.
 - Manual or automatic reset.
- 9 V rechargeable battery provide 4 hours of continuous operation. Automatic switch off to reduce battery consumption.
- 125% transducer overload protection.
- English and Italian menu.

Supplied in a plastic carrying case, with one rechargeable battery, 1 joint simulator (semielastic), instructions manual and certificate of calibration. Additional joint simulators (rundown adapters) for hard joint or fully elastic joint available on request.



JOINT SIMULATOR



EXTERNAL ROTARY TRANSUDER



CONNECTING PORTS



KEYPAD

Model	Torque in/lb	Dimensions in	Weight lb
K1	0.4–8.8	7.1x4.1x2.1	2.2
K5	2.6–44.0	7.1x4.1x2.1	2.2
K20	4.4–177.0	7.1x4.1x2.1	2.2
KTE5	4.4–44.0		
KTE25	17.7–221.0		

TORQUE TESTER - MINI SERIES

Controlling torque is vital for companies to ensure their product's quality. Fasteners that are insufficiently torqued can vibrate loose and excessive torque can strip threaded fasteners. Using a quality torque analyzer has become increasingly important for many companies to ensure that proper torque is being applied.



TORQUE TESTER - Mini K Series

MINI K Torque Analyzers feature a built-in transducer. The easy-to-use torque tester is ideal for checking all power tools up to 20 Nm. The small size and portability of the MINI K makes it ideal for checking torque tools on production floor regularly to ensure the tools are always calibrated.

- Built-in transducer.
- Three models with 8.8 in/lb, 44 in/lb and 177 in/lb max torque.
- Four digit display.
- Manual and auto reset functions to clear displayed values.
- Battery powered (9V) or AC adapter (option at extra cost). 9V battery provides 30 hours of continuous operation.
- Automatic shut down to extend battery life.
- Torque tester includes a spring washers joint simulator (minik 20) or built-in joint simulator and case.

Accuracy: $\pm 0.5\%$ of reading from 10% to 100%.

Accuracy: $\pm 1\%$ of reading from 1% to 10%.

Model	Torque in/lb	Dimensions in	Weight lb
mini K1	0.4–8.8	5.9x2.8x1.8	1.8
mini K5	2.6–44.0	5.9x2.8x1.8	1.8
mini K20	4.4–177.0	5.9x2.8x1.8	1.8

TORQUE TESTER - Mini Ke series

The Mini Ke system consists of a torque readout and an external rotary transducer. The Rotary Torque Transducer is the ideal torque-auditing tool for testing the actual torque being applied on the assembly application. By connecting a rotary torque transducer between an electric or pneumatic tool and an assembly application, you can monitor the real torque being applied from the tool to fastener or bolt.

Accuracy: $\pm 0.5\%$ of reading from 10% to 100%.

Accuracy: $\pm 1\%$ of reading from 1% to 10%.



Model	Torque in/lb	Dimensions in	Weight lb
mini Ke 5	4.4–44.0 external rotary transducer	5.9x2.8x1.8	1.1 (without transducer)
mini Ke 25	17.7–221.0 external rotary transducer	5.9x2.8x1.8	1.1 (without transducer)
mini Ke	Up to 4425.0 depending on transducer	5.9x2.8x1.8	1.1 (without transducer)

ELECTRIC SCREWDRIVERS WITH T & A

Electric Screwdrivers with Torque and Angle Control

Industrial tightening may require different control strategies and solutions. The most common cases are: torque control with angle monitoring and angle control with torque monitoring.

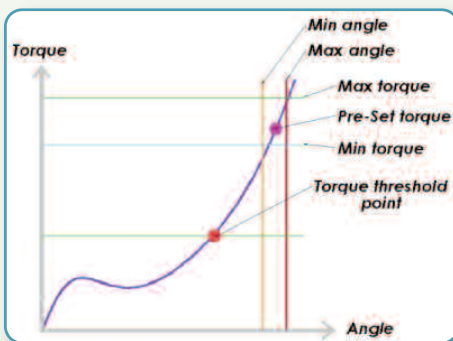
Kolver T & A control units can manage all such strategies.

The Torque/Angle Control

The main parameters to be controlled are the tightening torque applied to the screw and the rotation angle of the screw, with priority to the torque value. If the torque and angle values found by the system are within the programmed settings, the motor stops automatically and the indication of OK cycle (green led turned on) is given, otherwise an error (red led) is generated.

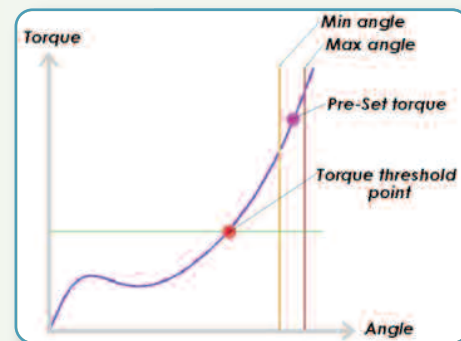
The Angle Control

The main parameters to be controlled is the rotation angle of the screw. The motor stops automatically when the pre-set angle value has been reached and an indication of OK cycle (green led turned on) is given.



Main features:

- Display shows torque value in Nm or lbf.in and angle in degree
- 8 different programs for custom joints with description
- Selection of factory pre-set joints (hard to soft)
- User friendly menu
- Nm and lbf.in unit
- Password protected



Model	Torque in/lbs	RPM max	Components
TAA10D	18.0–88.0	600	PLUTO10D/TA, EDU1AE/TA, TAA
TAA10P	18.0–88.0	600	PLUTO10P/TA, EDU1AE/TA, TAA
TAA10P/U	18.0–88.0	600	PLUTO10P/U/TA, EDU1AE/TA, TAA
TAA10CA	18.0–88.0	600	PLUTO10CA/TA, EDU1AE/TA, TAA
TAA10D/LTP	5.3–35.0	400	PLUTO10D/TA, EDU1AE/LTP/TA, TAA
TAA10P/LTP	5.3–35.0	400	PLUTO10P/TA, EDU1AE/LTP/TA, TAA
TAA10P/U/LTP	5.3–35.0	400	PLUTO10P/U/TA, EDU1AE/LTP/TA, TAA
TAA10CA/LTP	18.0–88.0	400	PLUTO10CA/TA, EDU1AE/LTP/TA, TAA
TAA15D	17.0–132.0	320	PLUTO15D/TA, EDU1AE/TA, TAA
TAA15P	17.0–132.0	320	PLUTO15P/TA, EDU1AE/TA, TAA
TAA15P/U	17.0–132.0	320	PLUTO15P/U/TA, EDU1AE/TA, TAA
TAA15CA	17.0–132.0	320	PLUTO15CA/TA, EDU1AE/TA, TAA
TAA15D/LTP	5.3–60.0	220	PLUTO15D/TA, EDU1AE/LTP/TA, TAA
TAA15P/LTP	5.3–60.0	220	PLUTO15P/TA, EDU1AE/LTP/TA, TAA
TAA15P/U/LTP	5.3–60.0	220	PLUTO15P/U/TA, EDU1AE/LTP/TA, TAA
TAA15CA/LTP	17.0–132.0	220	PLUTO15CA/TA, EDU1AE/LTP/TA, TAA

A C E S C R E W C O U N T E R

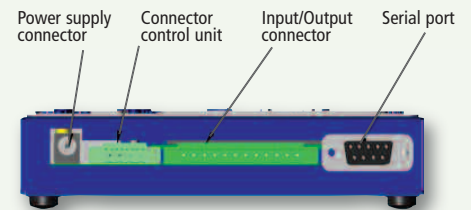
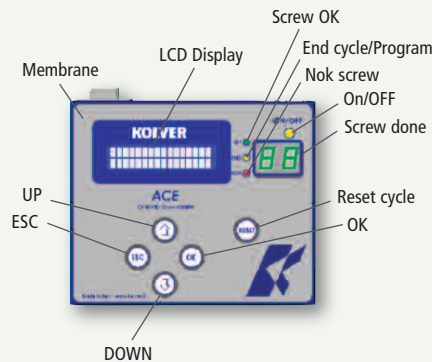
ACE Screw Counter



The ACE screw counter is a process control system that monitors the fastening assembly process. It tracks, in real time, the fastening of each screw in an assembly, then notifies the result. It keeps a summary of good and complete assemblies as well as of bad and incomplete ones throughout the production day. The ACE is easily programmed with user interface screens through the keypad. Walk through a few simple steps to input the parameters for total number of fasteners required in a completed assembly and the fastening process can begin. The unit gives the operator audible and visual indications that the assembly has been completed without error and it is safe to move on to the next process step or if it has been rejected.

Main features:

- To be connected to EDU..BR/SG or EDU1AE or to EDU1FR/SG.
- ACE includes the screw counter + cable for connection to the control unit.
- 8 independent programs.
- Up to 99 screws for each program.
- Sequence of 4 programs.
- Min and max fastening time (accuracy: 0.01 sec).
- Separate displays for parameters setting and fasteners count.
- OK and Error lights.
- Statistics: Total number of correct screws done, wrong screws, cycles done, sequences done.
- I/O signals.
- Password protected.
- Wall mountable.
- Remote control of the system (optional).
- RS232 port.
- Including mounting brackets.



Model	Dimensions in	Weight lb
ACE 101	5.4x4.5x1.1	1.2
EDU1FR/ACE	5.4x4.5x7.2	2.5
EDU1AE/ACE	7.3x5.0x8.4	8.1
EDU1BR/ACE	5.4x4.5x7.2	3.3

T L S P O S I T I O N I N G A R M

TLS Positioning Arm



The TLS Arm is an “intelligent” system that error-proofs your assembly ensuring that every screw is in the correct location at the right torque. Assembly sequences and X-Y coordinates are easily programmed with user interface screens through the keypad from the intuitive menu. Torque programs are automatically selected and enabled from the screwdriver controller based on the TLS Arm locations and current sequence step. No PC is required. A fixture to hold your work in the same place every time is highly recommended. The TLS Arm consists of a torque reaction arm with an encoder mounted at the pivot point and with a linear metering resistor. The encoder records the angle and the linear resistor records the distance. The TLS Control Box converts the angle counts of the encoder and the distance detected by the resistor to the precise X-Y position of the screwdriver. X-Y accuracy can be set by the operator according to each application.

TLS includes arm + unit + cable for EDU..BR/SG or EDU1AE or EDU1FR/SG control unit.

Main features:

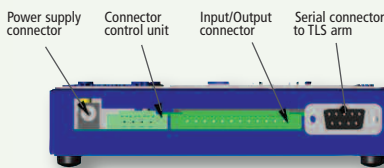
- 3 programmable assembly pattern
- 6 programs per assembly
- Up to 93 screws per assembly
- Screw position (length/angle)
- Programmable tolerance
- Statistics
- Manual reset
- Password protected
- Units of measurement (mm, in)
- Language option
- Accuracy: length ± 1 mm
angle $\pm 1^\circ$
- Minimum distance between screw centers at max extensions: 7mm
- External keyboard and serial port as options



TLS ARM



TLS BOX



Model		Dimensions in	Weight lb	Controller
TLS	Box	5.4x4.5x1.2	1.2	EDU1FR/SG
	Arm min	21.1x7.2x3.8	3.1	
	Arm max	40.4x7.2x3.8		
TLS	Box	5.4x4.5x1.2	1.2	EDU..BR/SG & EDU1AE
	Arm min	21.1x7.2x3.8	3.1	
	Arm max	40.4x7.2x3.8		

T E L E S C O P I N G T O R Q U E R E A C T I O N A R M S E R I E S

Torque reaction arm DMFK are designed to eliminate the reaction generated by electric or pneumatic screwdrivers when these units stop at their pre-set torque. Capacity of the series is 132 in/lbs. Optional Arms are available for applications up to 354 in/lbs. Contact factory for details.



Model	Min Reach in	Max Reach in	Weight Capacity
DMFK90	16.0	36.0	5
DMFK90ER65	24.0	65.0	3

(P S 2) F O L D I N G A R M



Folding Arm (PS2)

The PS2 folding arm has a large effective working area and a wide selection of tool holders for both vertical and horizontal operations.

Common tools and machines that are used with PS2 include pop rivet guns portioning tools, power screwdrivers, adhesive guns and nail guns.

DO YOU NEED ERROR PROOFING?

You can upgrade Folding arms and most Rail arms with Smart-Control. Smart-Control upgrade adds three encoders to specific torque arms, at the pivot locations, and a control system. The controller converts the data from the encoders to an X, Y & Z location and controls the screwdrivers based on the program you generated.

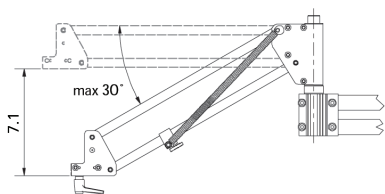
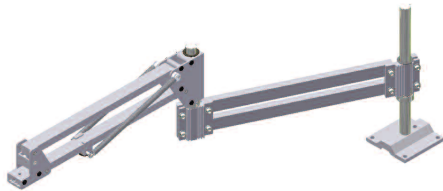
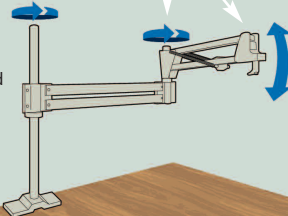


TABLE STAND

- TST-0100
h = 11.8 in
- TST-0148
h = 18.5 in

TABLE CLAMP

- TCL-2282

WALL BRACKET

- WBR-P2

PILLAR

- BST-080X040X0800
h = 31.5 in
- BST-080X040X1300
h = 51.2 in

ADJUSTABLE VERTICAL HOLDER

- ATH-2540-2 Ø = 0.98–1.96 in
- ATH-5060-1 Ø = 1.6–1.96 in

Weight .44 lbs

FIXED VERTICAL HOLDER

- VTH-0036-2 Ø = 1.4 in
- VTH-0038-2 Ø = 1.5 in
- VTH-0046-2 Ø = 1.8 in
- VTH-0056-2 Ø = 2.2 in

Weight 1.54 lbs Torque ≤ 619.5 in/lbs

VERTICAL HOLDER, adjustable in two axis *

- STH-0036-2 Ø = 1.4 in
- STH-0038-2 Ø = 1.5 in
- STH-0046-2 Ø = 1.8 in
- STH-0056-2 Ø = 2.2 in

Weight .66 lbs

HORIZONTAL HOLDER, rotary and adjustable *

- CST-0036-2 Ø = 1.4 in
- CST-0038-2 Ø = 1.5 in
- CST-0046-2 Ø = 1.8 in
- CST-0056-2 Ø = 2.2 in

Weight .88 lbs

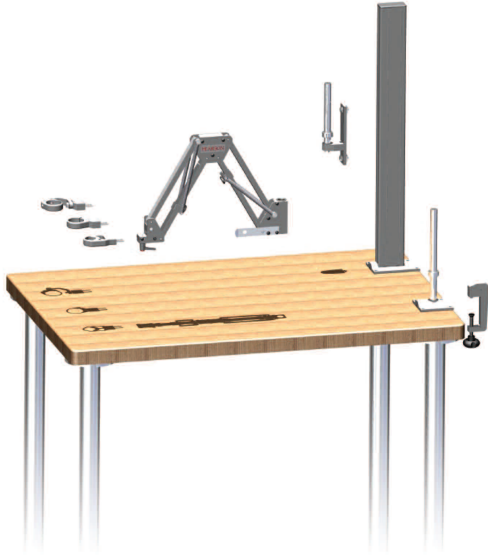
ROTARY HORIZONTAL HOLDER *

- HTH-0036-2 Ø = 1.4 in
- HTH-0038-2 Ø = 1.5 in
- HTH-0046-2 Ø = 1.8 in
- HTH-0056-2 Ø = 2.2 in

Weight .88 lbs

Article Number	Load Capacity	Torque	Max reach	Min reach
PS2-0750-0001	0–2.2 lbs	177.0 in/lbs	27.9 in	4.3 in
PS2-0750-01025	2.2–5.5 lbs	177.0 in/lbs	27.9 in	4.3 in
PS2-0900-0001	0–2.2 lbs	177.0 in/lbs	33.1 in	7.9 in
PS2-0900-01025	2.2–5.5 lbs	177.0 in/lbs	33.1 in	7.9 in

P A R A L L E L A R M (P A 2)



Parallel Arm (PA2)

The PA2 parallel arm is intended for vertical operations and is used primarily with threading machines and power screwdrivers.

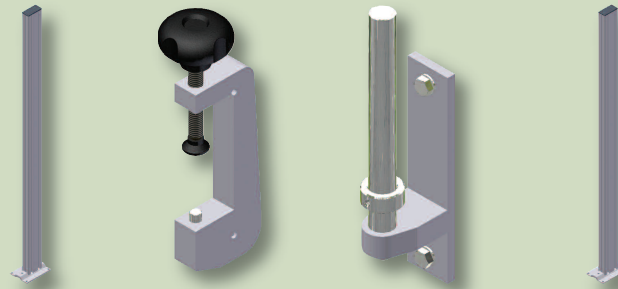
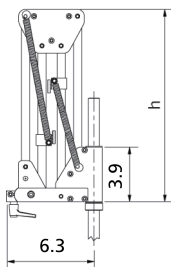


TABLE STAND

- TST-0100
h = 11.8 in
- TST-0148
h = 18.5 in

TABLE CLAMP

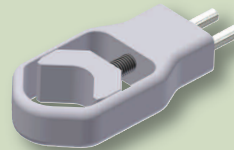
- TCL-2282

WALL BRACKET

- WBR-P2

PILLAR

- BST-080X040X0800
h = 31.5 in
- BST-080X040X1300
h = 51.2 in

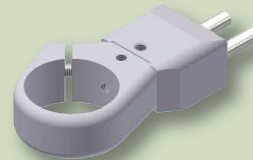


ADJUSTABLE VERTICAL HOLDER

- ATH-2540-2 Ø = 0.98–1.96 in
 - ATH-4050-2 Ø = 1.6–1.96 in
- Weight .44 lbs

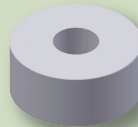
FIXED VERTICAL HOLDER

- VTH-0036-2 Ø = 1.4 in
 - VTH-0038-2 Ø = 1.5 in
 - VTH-0046-2 Ø = 1.8 in
 - VTH-0056-2 Ø = 2.2 in
- Weight .44 lbs



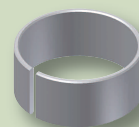
VERTICAL HOLDER, adjustable in two axis *

- STH-0036-2 Ø = 1.4 in
 - STH-0038-2 Ø = 1.5 in
 - STH-0046-2 Ø = 1.8 in
 - STH-0056-2 Ø = 2.2 in
- Weight .44 lbs



BLANK STEP DOWN SLEEVE

- ADS-36
- ADS-46
- ADS-56



STEP DOWN SLEEVE

- ADS-36-xx,x
- ADS-46-xx,x
- ADS-56-xx,x



TOOL SPECIFIC STEP DOWN SLEEVE

- ADS-xxxx

Article Number	Load Capacity	Torque	Max reach	Min reach	Height
PA2-0300-0002	0–4.4 lbs	177.0 in/lbs	25.2 in	17.3 in	13.8 in
PA2-0300-02025	4.4–5.5 lbs	177.0 in/lbs	25.2 in	17.3 in	13.8 in
PA2-0400-0002	0–4.4 lbs	177.0 in/lbs	30.7 in	20.5 in	16.9 in
PA2-0400-02025	4.4–5.5 lbs	177.0 in/lbs	30.7 in	20.5 in	16.9 in

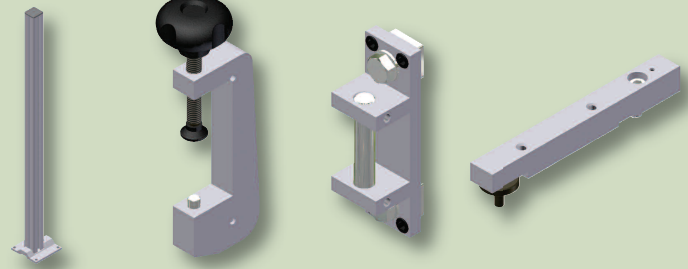
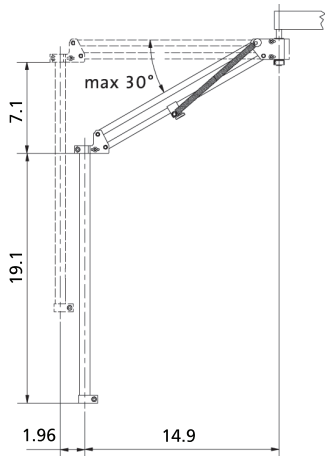
(P S 3) F O L D I N G A R M



Folding Arm (PS3)

The PS3 folding arm is used exclusively for fine mechanical work. Machines and tools that are often used with this folding arm include soldering irons and small power screwdrivers.

Tool mountings are available for both vertical and horizontal operations. A wall bracket, height stop and extension tube are standard equipment with this arm.



PILLAR

- BST-040X040X0800 h = 31.5 in
- BST-040X040X1300 h = 51.2 in

TABLE CLAMP

- TCL-2282

WALL BRACKET

- WBR-P3
- Included

HEIGHT STOP

- TAR-P3
- Included

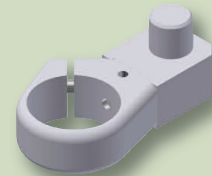


ADJUSTABLE VERTICAL HOLDER

- ATH-2540-3 $\varnothing = 0.98-1.6$ in
 - ATH-4050-3 $\varnothing = 1.6-1.96$ in
- Weight .44 lbs

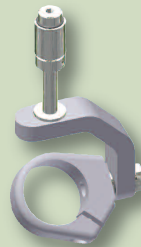
FIXED VERTICAL HOLDER

- VTH-0036-3 $\varnothing = 1.4$ in
 - VTH-0038-3 $\varnothing = 1.5$ in
 - VTH-0046-3 $\varnothing = 1.8$ in
 - VTH-0056-3 $\varnothing = 2.2$ in
- Weight .33 lbs



VERTICAL HOLDER, adjustable in two axis *

- STH-0036-3 $\varnothing = 1.4$ in
 - STH-0038-3 $\varnothing = 1.5$ in
 - STH-0046-3 $\varnothing = 1.8$ in
 - STH-0056-3 $\varnothing = 2.2$ in
- Weight .66 lbs



HORIZONTAL HOLDER, rotary and adjustable *

- CST-0036-3 $\varnothing = 1.4$ in
 - CST-0038-3 $\varnothing = 1.5$ in
 - CST-0046-3 $\varnothing = 1.8$ in
 - CST-0056-3 $\varnothing = 2.2$ in
- Weight .88 lbs

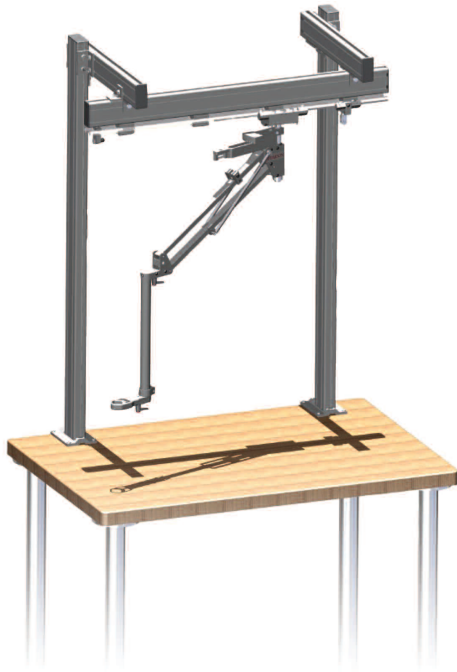


ROTARY HORIZONTAL HOLDER *

- HTH-0036-3 $\varnothing = 1.4$ in
 - HTH-0038-3 $\varnothing = 1.5$ in
 - HTH-0046-3 $\varnothing = 1.8$ in
 - HTH-0056-3 $\varnothing = 2.2$ in
- Weight .33v lbs

Article Number	Load Capacity	Torque	Max reach	Min reach
PS3-0750-0005	0–1.1 lbs	31.0 in/lbs	26.4 in	5.3 in
PS3-0750-00501	1.1–2.2 lbs	31.0 in/lbs	26.4 in	5.3 in
PS3-0900-0005	0–1.1 lbs	31.0 in/lbs	31.7 in	9.1 in
PS3-0900-00501	1.1–2.2 lbs	31.0 in/lbs	31.7 in	9.1 in

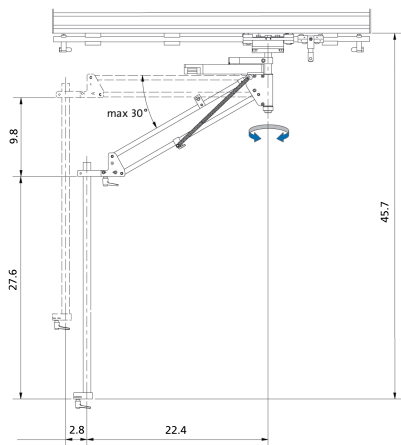
RAIL SUPPORTED ARM (P R 2)



Rail Supported Arm (PR2)

The PR2 rail supported arm has a very flexible design and many practical accessories. It is recommended that the rail supported arm is fitted with both a side stop and a height stop for maximum control and convenience.

The extension tube can be mounted at the required height. If an adjustable working height is required, we recommend the adjustable extension tube. It can be adjusted between 15.75 and 27.6 in.



- OFFSET BEAM**
 - OSB-080X040X0500
- ALUMINUM BEAM**
 - SBE-080X040
- RAIL**
 - BRL-3412
- PILLAR**
 - BST-080X040X1300
- END STOP**
 - EST-3434
- CABLE TROLLEY**
 - TRO-8040
 - Rec 1 piece/m
- END COVER**
 - ECO-8040
- ARRESTING KIT 4 PCS**
 - AKI-MC6S06x040-1
 - Rec 1 set/m
- EXTENSION TUBE adjustable**
 - THA-P2
 - Weight: 1.3 lbs
- EXTENSION TUBE**
 - TEX-P2
 - Weight: 1.1 lbs
- SIDE STOP**
 - SAR-P2
- HEIGHT STOP**
 - TAR-P2
- ADJUSTABLE VERTICAL HOLDER**
 - ATH-2540-2 $\varnothing = 0.98-1.96$ in
 - ATH-4050-2 $\varnothing = 1.6-1.96$ in
 - Weight .44 lbs
- FIXED VERTICAL HOLDER**
 - VTH-0036-2 $\varnothing = 1.4$ in
 - VTH-0038-2 $\varnothing = 1.5$ in
 - VTH-0046-2 $\varnothing = 1.8$ in
 - VTH-0056-2 $\varnothing = 2.2$ in
 - Weight .44 lbs
- VERTICAL HOLDER, adjustable in two axis ***
 - STH-0036-2 $\varnothing = 1.4$ in
 - STH-0038-2 $\varnothing = 1.5$ in
 - STH-0046-2 $\varnothing = 1.8$ in
 - STH-0056-2 $\varnothing = 2.2$ in
 - Weight .44 lbs

Article Number	Load Capacity	Torque	Reach
PR2-0550-00025	0-5.5 lbs	177.0 in/lbs	+/- 18.1 in

L I N E A R A R M



The SmartMotion Linear Arm Assembly Kits:

The Linear Series arms maneuver smoothly as they absorb the torque reaction from the screwdrivers while providing ergonomic support for the operator. The fluid movement increases precision and production for a variety of torque applications.

Prevents cross threading and side load. Keeps tool perpendicular. Reduces RMI (Repetitive Motion Injury) and CTS (Carpal Tunnel Syndrome) while boosting production. Extends in horizontal direction and arm length is adjustable. Maneuvers smoothly as the arm absorbs torque reaction from electric pneumatic tools.

TABLE CLAMP

- TCL-2282

Optional: available upon request

ADJUSTABLE VERTICAL HOLDER

- ATH-2540-2 $\varnothing = 0.98-1.96$ in
- ATH-4050-2 $\varnothing = 1.6-1.96$ in

Weight .44 lbs

FIXED VERTICAL HOLDER

- VTH-0036-2 $\varnothing = 1.4$ in
- VTH-0038-2 $\varnothing = 1.5$ in
- VTH-0046-2 $\varnothing = 1.8$ in
- VTH-0056-2 $\varnothing = 2.2$ in

Weight .44 lbs

VERTICAL HOLDER, adjustable in two axis *

- STH-0036-2 $\varnothing = 1.4$ in
- STH-0038-2 $\varnothing = 1.5$ in
- STH-0046-2 $\varnothing = 1.8$ in
- STH-0056-2 $\varnothing = 2.2$ in

Weight .44 lbs

Shop a la carte to configure which SmartMotion tool holder you would prefer for the 2-0020-00003 Linear Arm

BLANK STEP DOWN SLEEVE

- ADS-36
- ADS-46
- ADS-56

STEP DOWN SLEEVE

- ADS-36-xx,x
- ADS-46-xx,x
- ADS-56-xx,x

TOOL SPECIFIC STEP DOWN SLEEVE

- ADS-xxxx

2-0020-00002 SmartMotion: Linear Arm with Universal Tool Adapter Kit Includes:		2-0020-00003 SmartMotion: Linear Arm with SmartMotion Tool Adapter Kit Includes:	
2-0060-00003	Linear Arm	2-0060-00003	Linear Arm
2-0060-00002	Table Stand	2-0060-00002	Table Stand
2-0010-00035	Tool Balancer Bracket	2-0010-00035	Tool Balancer Bracket
TEBCBA3	Tool Balancer	TEBCBA3	Tool Balancer
2-0010-00033	Universal Tool Holder	2-0010-00034	Universal Tool Holder

Article Number	Torque	Max Reach	Min Reach
2-0020-00002	Up to 177.0 in/lbs	19.0 in	4.3 in
2-0020-00003	Up to 177.0 in/lbs	19.0 in	4.3 in

ONE YEAR LIMITED WARRANTY

Kolver USA, LLC. ("Kolver") warrants that each product sold by it shall be free from defects in material and workmanship under normal application, use and service for a period of one (1) year from the date of shipment by Kolver or its distributors to the initial purchaser. Kolver's sole obligation under this warranty is, in Kolver's sole discretion, to repair or replace free of charge during the warranty period, any part or parts found to be defective, provided that the product (i) is delivered, postage prepaid, to Kolver USA, LLC. Woodland Park, One Park Drive, Unit 9, Westford, MA 01886; (ii) has not been misused, subjected to unusual stress, modified or services in any manner. THIS WARRANTY IS IN LIEU OF ALL OTHER WARRANTIES, EXPRESSED OR IMPLIED, WRITTEN OR ORAL, INCLUDING WITHOUT LIMITATION THE IMPLIED WARRANTIES OF MERCHANTABILITY AND OF FITNESS FOR A PARTICULAR PURPOSE. IN NO EVENT SHALL KOLVER BE LIABLE FOR ANY INCIDENTAL, CONSEQUENTIAL, SPECIAL OR OTHER DAMAGES IN EXCESS OF THE REPLACEMENT COST OF THE DEFECTIVE PART(S). KOLVER'S OBLIGATIONS HEREUNDER SHALL TERMINATE THREE (3) YEARS FROM THE DATE OF THE ORIGINAL SHIPMENT.



KOLVER USA

1 Park Drive
Unit 9
Westford, Massachusetts, 01886
USA

phone: 978 692 5166

fax: 978 692 3042

www.kolverusa.com