

TRACK SYSTEMS

02

1-CIRCUIT 230V	52
3-CIRCUIT 230V	54
MARKTRACK	56
TRAC12	58

TRACK SYSTEMS

Track lighting systems are probably the most versatile lighting tool for galleries, exhibitions, retail and other display applications, allowing fixtures to be positioned precisely where required.





0:00

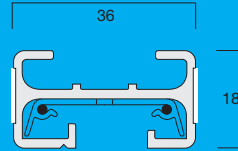
MENU

Apple Display

1-CIRCUIT 230V

A 16A track, connector and accessory system. Ideal for applications where spotlights may need to be frequently added or removed. Illuma track is scored to optimise earthing.

- Illuma 1 - circuit track is rated at 16A, giving a maximum lamp load of 3800W per live end (eg. 38 x 100W spotlights).



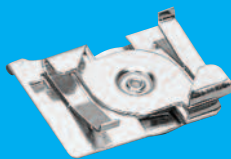
T4 WH ■ SG ■ BL ■
4 ft / 1115mm length
including Dead-end 0.68kg

T8 WH ■ SG ■ BL ■
8 ft / 2335mm length
including Dead-end 1.35kg

T12 WH ■
12 ft / 3555mm length
including Dead-end 2.10kg

T37F

T bar attachment clip
For use with ceiling tiles
that lie flush with the T bar



Suspensions T33 / T35

T4 2 rods or wires
T8 3 rods or wires
T12 4 rods or wires

Rods

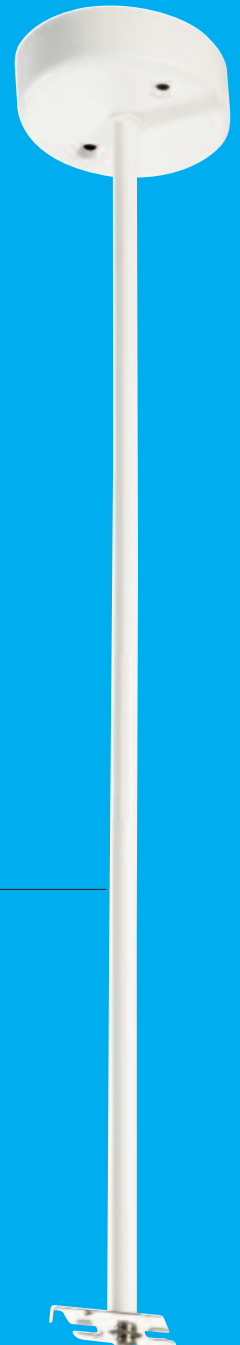
T33(500) WH ■ SG ■ BL ■
Suspension rod 500mm overall

T33(1000) WH ■ SG ■ BL ■
Suspension rod 1000mm overall

Wires

T35(3000)
Adjustable suspension
wire - 3000mm long
with bracket & fixings

T35(6000)
Adjustable suspension
wire - 6000mm long
with bracket & fixings



- Track can be cut to any length and comes complete with dead end. Remember you need a live end.

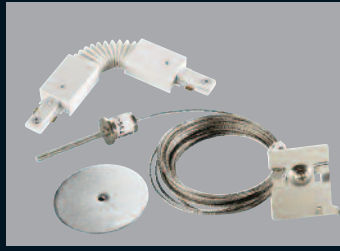
- If you are joining track select the appropriate connectors for purpose. You can suspend track with wire or rods.

- Ensure the spotlights that you select are compatible with single circuit track. The part code will end in /S.

1



2



3



Connectors, live and dead ends

Dimensions of connectors refer to length after insertion into track.

T38 WH ■ SG ■ BL ■
Live-end 82mm



T39 WH ■ BL ■
Centre-feed
118 x 118mm
Not intended for use with suspended track



TDE1 WH ■ SG ■ BL ■
Dead-end
3mm with fixing screw



T20 WH ■ BL ■
Flexible connector
0° to 158° 160mm



T23 WH ■ SG ■ BL ■
Straight connector
8mm



T29/S WH ■ BL ■
Switched track adaptor
pre-wired to 1.5m cable,
0.11kg.

Can be made to order with other cable lengths.

Designed for use with light fittings (5A max. unfused); not to be used for any other purpose.



T24 WH ■ BL ■
Adjustable connector
90° 70 x 70mm (adjustable left and right)
or 180° 105mm
(Suitable for incoming mains)

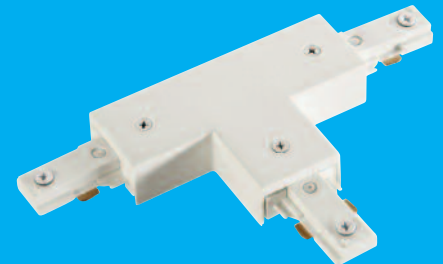


90°

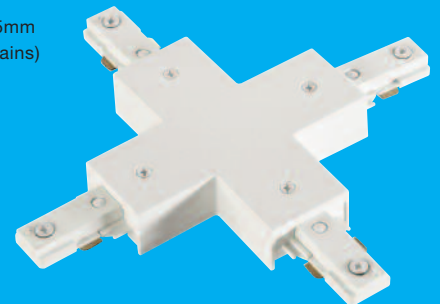


180°

T25 WH ■ BL ■
T connector
70 x 105mm
(Suitable for incoming mains)
Dual polarity



T26 WH ■ BL ■
X connector 105 x 105mm
(Suitable for incoming mains)
Requires two live ends



T32/S WH ■ BL ■
As T29/S with ring
(5kg max. load) 0.12kg.

Can be made to order with other cable lengths.

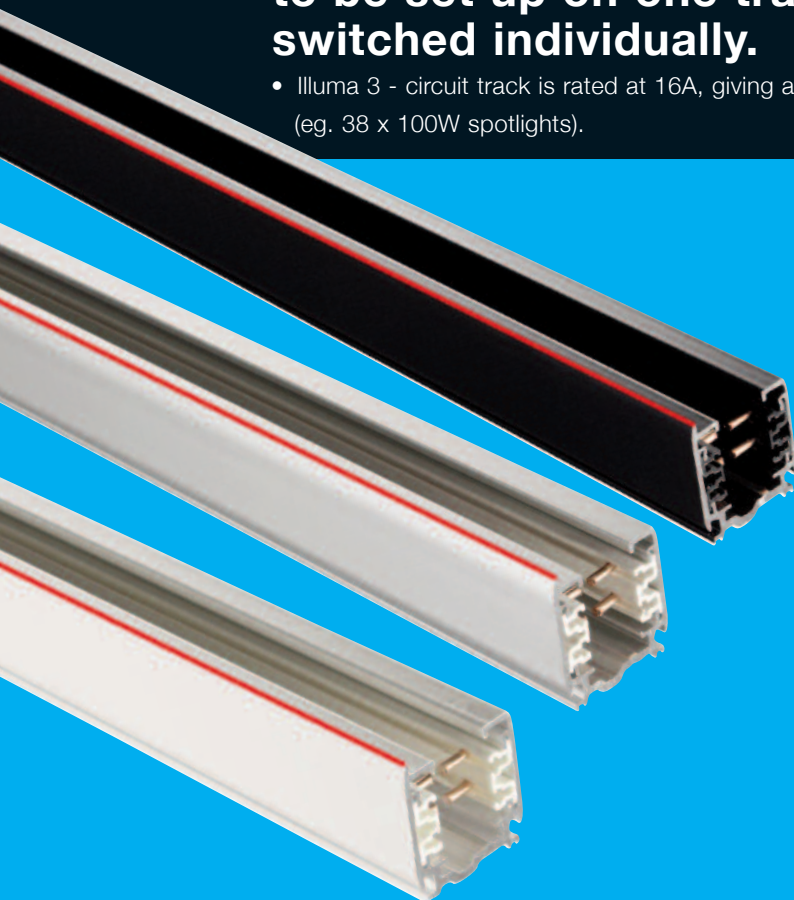
Designed for use with light fittings (5A max. unfused); not to be used for any other purpose.



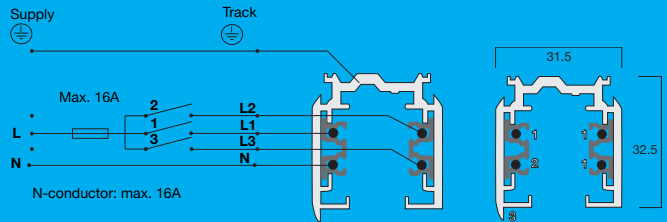
3-CIRCUIT 230V

The 'Global' 3-circuit 16A mains voltage track system. Enabling up to three lighting configurations to be set up on one track, and be controlled and switched individually.

- Illuma 3 - circuit track is rated at 16A, giving a maximum lamp load of 3800W across 3 circuits (eg. 38 x 100W spotlights).



3-Circuit (Single Phase) 230V AC, 16A, 3.7kVA



Track

TS4100 WH ■ SG ■ BL ■
1000mm / 3.2ft length
including Dead-end 0.90kg

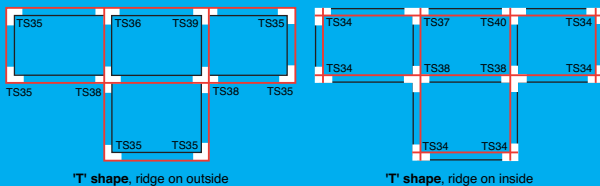
TS4200 WH ■ SG ■ BL ■
2000mm / 6.5ft length
including Dead-end 1.80kg

TS4300 WH ■ SG ■ BL ■
3000mm / 9.8ft length
including Dead-end 2.80kg

- 1 Live conductors
- 2 Neutral conductor
- 3 Lip ensures adaptor can only fit when correctly aligned

Polarity

When planning a layout with 3-circuit track, continuous polarity is necessary, as shown in the diagrams below. The red line indicates the polarity ridge on the track.



Cutting track

TSV12
Bending Tool
To shape conductors when track has been cut



Track adaptor

TS29 WH ■ BL ■
Global track adaptor pre-wired to 1.5m cable (5A max, unfused) 0.16kg.
Other cable lengths made to order.



Suspensions

Track must be secured every metre. Maximum force sustainable by each of the below: 200N

TSP4P WH ■ BL ■
Universal clamp 50mm length
c/w 6000mm adjustable
Wire Suspension



TSP4I WH ■ BL ■
Joint clamp 200mm length
c/w 6000mm adjustable
Wire Suspension



- Track can be cut to any length and comes complete with dead-end. Remember you need a live-end.

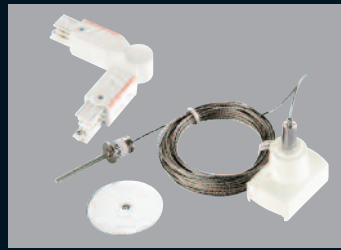
- If you are joining track select the appropriate polarity connectors. You can suspend track with wire systems.

- Ensure the spotlights that you select are compatible with three circuit track. The part code will end in /G3.

1



2



3



Connectors, live and dead ends

Dimensions of connectors refer to length after insertion into track. Red line indicates polarity.

TS11 WH ■ BL ■
Right Live-end 66mm



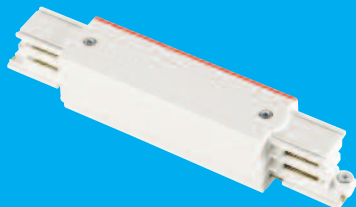
TS12 WH ■ BL ■
Left Live-end 66mm



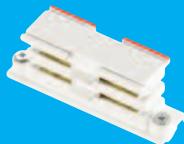
TS41 WH ■ BL ■
Dead-end 3mm



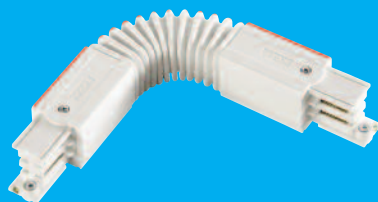
TS14 WH ■ BL ■
Centre feed 100mm
Suitable for incoming mains



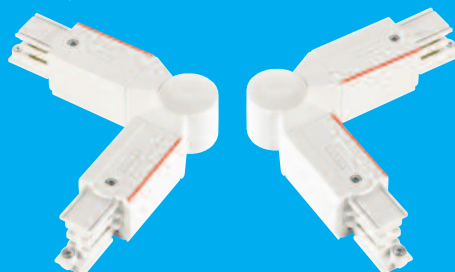
TS21 WH ■ BL ■
Straight connector
No extra length after insertion



TS23 WH ■ BL ■
Flexible connector
0° to 180° 175mm



TS24 WH ■ BL ■
Adjustable connector
60° to 300° 160mm



TS34 WH ■ BL ■
L Connector 66 x 66mm
Suitable for incoming mains



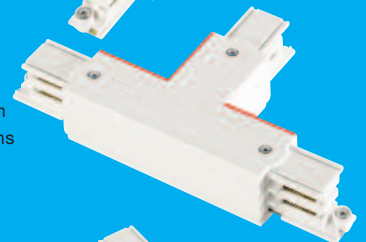
TS35 WH ■ BL ■
L Connector 66 x 66mm
Suitable for incoming mains



TS36 WH ■ BL ■
T Connector
66 x 100mm
Suitable for incoming mains



TS37 WH ■ BL ■
T Connector 66 x 100mm
Suitable for incoming mains



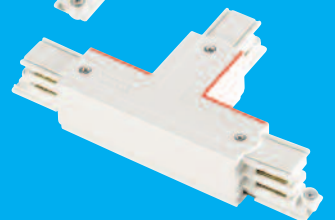
TS38 WH ■ BL ■
X Connector
100 x 100mm
Suitable for incoming main.
(Requires two live feeds)



TS39 WH ■ BL ■
T Connector
66 x 100mm
Suitable for incoming mains

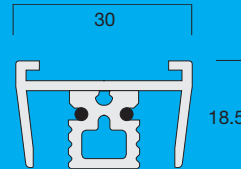


TS40 WH ■ BL ■
Reverse T Connector
66 x 100mm
Suitable for incoming mains



MARKTRACK 12V

12V 25A track which can be used with a range of miniature spotlights. Supplied complete with fixing kit, live-end and dead-end.



Track

TLV4A WH ■ BL ■
1200mm length 0.80kg
with Live-end and Dead-end
c/w 1.2m 4mm² cable
(max 300W loading)

TLV8 WH ■ BL ■
2400mm length 1.50kg
with Live-end and Dead-end
c/w 1.2m 4mm² cable
(max 300W loading)

Remote transformer

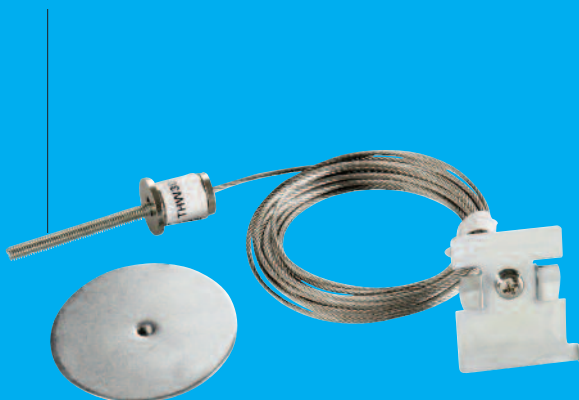
TLV4A and **TLV8** require a remote transformer:
LVTB300MOD-WH see page 218 for details

Suspensions

TLV4A 2 rods or wires.

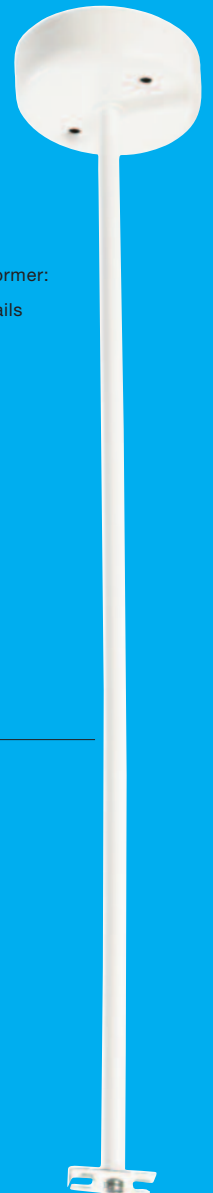
TLV8 3 rods or wires,

THW30
Adjustable wire Suspension Kit
1 x 3000mm
For use with **TLV4A**
and **TLV8**



THP5 WH ■ BL ■
Pendant Kit 0.60kg
Pack of 3 x 500mm rods
For use with **TLV4A**
and **TLV8**

THP10 WH ■ BL ■
Pendant Kit 1.10kg
Pack of 3 x 1000mm rods
For use with **TLV4A**
and **TLV8**



- Track can be cut to any length and comes complete with live and dead-end.

- Track cannot be joined due to voltage drop. Choose from track complete with transformer or separate remote.

- Ensure that the spotlights you select are compatible. Only use Marktrack spotlights, see page 40-41.

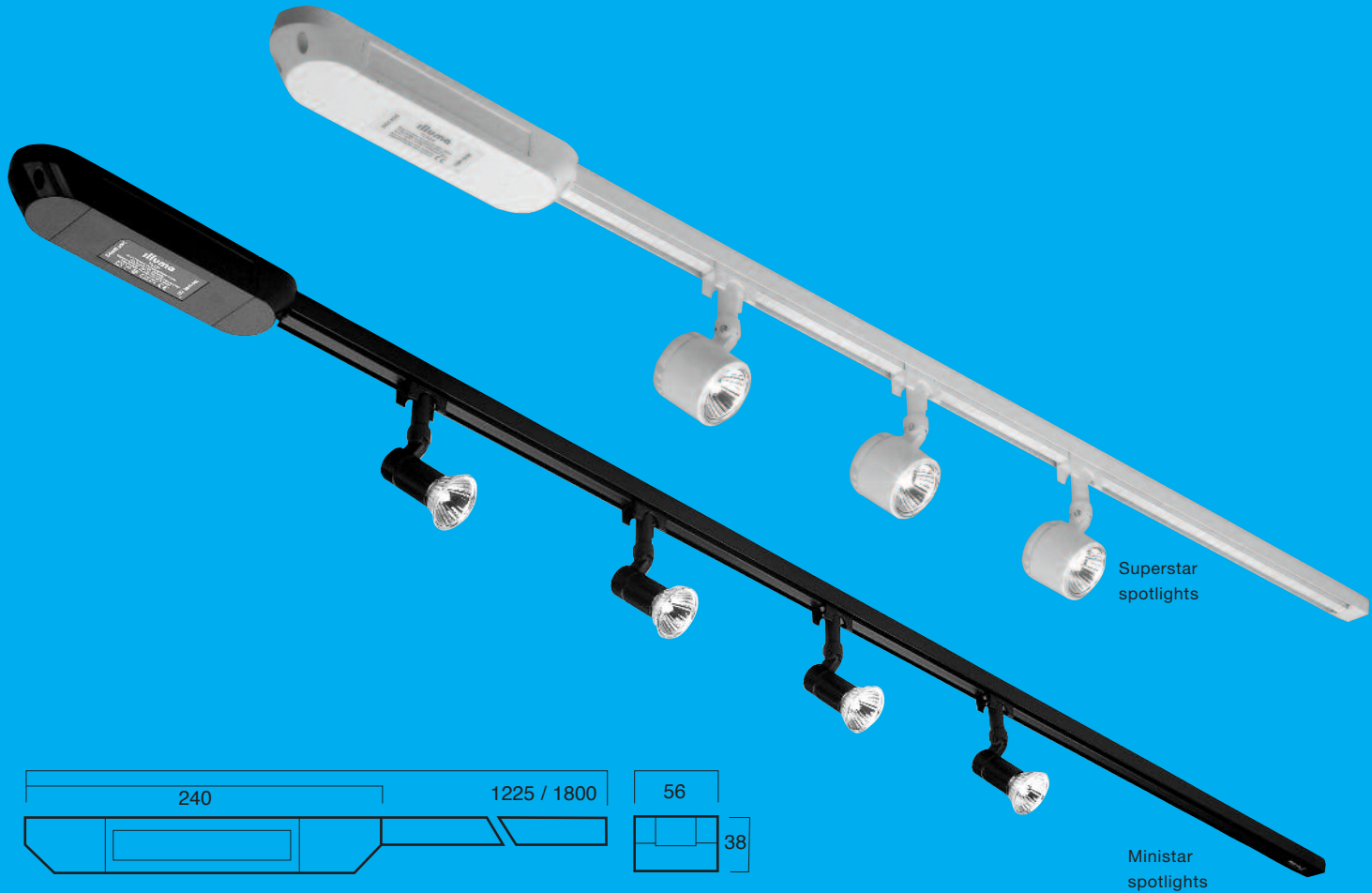
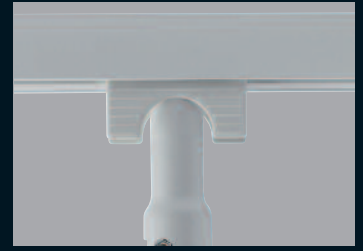
1



2



3



Track Packs

Track with transformer

TLVE4 WH ■ BL ■
Marktrack Pack 1.00kg
1.2m length
with 50 - 210VA transformer

TLVD6 WH ■ BL ■
Marktrack Pack 1.20kg
1.8m length
with 50 - 210VA transformer

Track, transformer and Ministar spotlights

TLVE4/300 WH ■ BL ■
Marktrack Pack 1.40kg
1.2m length
50 - 210VA transformer
3 x Ministar Spotlights c/w 50w Lamps

TLVD6/300 WH ■ BL ■
Marktrack Pack 1.80kg
1.8m length
50 - 210VA transformer
4 x Ministar Spotlights c/w 50w Lamps

Track, transformer and Superstar spotlights

TLVE4/330 WH ■ BL ■
Marktrack Pack 1.40kg
1.2m length
50 - 210VA transformer
3 x Superstar Spotlights c/w 50w Lamps

TLVD6/330 WH ■ BL ■
Marktrack Pack 1.80kg
1.8m length
50 - 210VA transformer
4 x Superstar Spotlights c/w 50w Lamps

Replacement transformers

THVTE210 WH ■ BL ■ Marktrack 210VA transformer

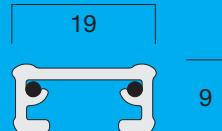
*Suitable for use with most types of good quality dimmer, including leading and trailing edge dimmers.
There may be an increase in transformer noise when dimming

02

058 059

TRAC12 12V

A miniature 20A track system ideal for where space is tight or neatness is paramount. Sections supplied with pre-drilled fixing holes & complete with live-end/connector & dead-end.



A laminated transformer is available up to 300VA (see below), Track must not be loaded beyond 240W.

Track

TL4 WH ■ BL ■
1134mm length 0.20kg
with Live-end/ Connector and Dead-end

Remote transformer

LVTB300MOD-WH see page for details 218

- Track can be cut to any length and comes complete with live and dead-end.

- Track can be joined using connectors. You will require a remote transformer.

- Ensure that the spotlights you select are compatible. Only use Trac12 spotlights or floods, see page 42-43.

1



2



3



TL38 WH ■ BL ■
Live-end/connector and
Dead-end. For use with
 track sections that are cut
 on site



TL20 WH ■ BL ■
Adjustable connector
 joins track sections at
 variable angles



TL24 WH ■ BL ■
Right-angle connector

