

HONDA POWER EQUIPMENT

HONDA
POWER EQUIPMENT

SPRING 2009 - SUMMER 2010



ADVANCED **4** TECHNOLOGY

MOWERS

BRUSHCUTTERS

BLOWER

HEDGE CUTTER

TILLERS

GENERATORS



HONDA ADVANCED 4-STROKE TECHNOLOGY

HELPING PEOPLE GET THINGS DONE

TRUSTED BY OWNERS AND RESPECTED BY COMPETITORS SINCE 1948, HONDA PRODUCES MORE ENGINES THAN ANY OTHER COMPANY IN THE WORLD.

Throughout the decades Honda has consistently designed and engineered 4-stroke technology that is without parallel. From the racetrack to the road, to the Aussie backyard we are dedicated to the challenge of applying new technologies and achieving top performance.



For over 60 years we believe, at Honda, the most important technological breakthroughs are the ones that not only make our lives easier, but also contribute to a better, safer and less stressful world. Which is why our engines are built to perform with maximum efficiency, economy, reliability and durability. Compared to any 2-stroke powered products on the market, Honda 4-stroke lawnmowers, brushcutters, blowers, hedgecutters, tillers, pumps, generators and engines simply last longer given the same conditions.



FOR BETTER VALUE, BETTER UPGRADE TO HONDA ADVANCED 4-STROKE TECHNOLOGY:

- 4** STARTS FIRST TIME EVERY TIME RELIABILITY
- 4** MORE POWER AND TORQUE
- 4** TROUBLE-FREE NO FUEL MIXING
- 4** LESS SMOKE AND NOISE THAN A 2-STROKE
- 4** A FOUR-YEAR DOMESTIC WARRANTY
- 4** THE ENVIRONMENT
- 4** SUPERIOR DURABILITY AND LONGER LIFE
- 4** OUTSTANDING FUEL EFFICIENCY

That's the Honda Advanced 4 Technology difference, and that's why more and more Australians are choosing to upgrade to a Honda.



UPGRADE TO A HONDA

Honda's range of Lawn and Garden Advanced 4-stroke Technology products offer everything you need to make gardening a dream. Honda's quest for continuous improvement and customer satisfaction ensures our products are safe to use and environmentally friendly. Indeed, because our commitment to the environment is without equal, every Honda Lawn and Garden product offers cleaner exhaust emissions, better fuel economy and lower noise levels than 2-stroke engines – all without compromising performance.

CHOOSING THE RIGHT HONDA LAWNMOWER FOR YOU

Whatever size lawn you have, Honda has a brilliantly engineered Advanced 4-stroke Technology lawnmower to suit. Here's a quick guide to choosing the Honda lawnmower that's right for you. The general rule of thumb is the smaller the lawn, the smaller the lawnmower. For example, with compact lawns manoeuvrability is important, but with larger lawns a bigger cutting width and self-propelled lawnmower will make the job far easier.

PUSH VS SELF-PROPELLED

For small to medium sized lawns a Honda push lawnmower is perfect. Most models feature a lightweight rustproof aluminium deck coupled to 200mm dual sealed ball-bearing wheels for smooth and easy manoeuvrability. For larger lawns or hilly areas a self-propelled Honda lawnmower might be a better option. Honda's range of self-propelled mowers combine brilliant engineering with superior useability.

WHAT IS A MULCH & CATCH MOWER?

Honda offers a range of lawnmowers that have Mulch and Catch capability. This simply means that you can choose to either catch the grass clippings in the catcher or mulch them and return the nutrient-rich particles to the ground as finely chopped grass. This mulching can be very beneficial to your lawn and reduces the amount of evaporation. Another benefit is that time is saved as there is no need to empty the grass catcher.

GARDENING TIP #1

Even in drought conditions, maintaining a healthy lawn is achievable with a little bit of work. Ensuring your lawn has enough nutrients is important. A Honda lawnmower with a mulching option can help by returning the finely cut grass to the lawn rather than collecting it in a catcher. Choosing the right grass type is also a factor. Drought-tolerant grasses like Couch, Kikuyu and Buffalo are ideal.

MOWING SAFETY

To help keep you and your family safe when mowing, it's important to follow a few commonsense rules. Firstly, always read the owner's manual before using your mower. Never adjust the deck height, remove the catcher or turn the mower on its side with the engine still running. Clear the area to be mowed of sticks, stones and other debris before you start. Never mow barefoot or with thongs or sandals. Ideally long pants, heavy shoes plus eyewear and hearing protection should be used.



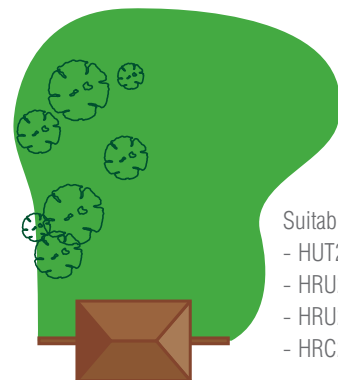
COMPACT LAWNS

Suitable lawnmowers:
- HRE370 Electric



MEDIUM LAWNS

Suitable lawnmowers:
- HRU197 Buffalo Bull
- HRU196 Buffalo Classic
- HRU19R & D Buffalo Buck



LARGE LAWNS

Suitable lawnmowers:
- HUT216 Buffalo Utility
- HRU217D Buffalo Bull
- HRU216 Buffalo Classic
- HRC216 Commercial



HONDA TOTAL GARDEN CARE

HONDA MANUFACTURES MORE THAN JUST THE WORLD'S BEST LAWNMOWERS. OUR LAWN & GARDEN RANGE INCLUDES:

BRUSHCUTTERS

Featuring Honda's revolutionary Mini 4-stroke engines, Honda brushcutters are lightweight, easy to use and deliver 'starts first time every time' reliability and superior performance.

BLOWER

Honda's 4-stroke blower is the super-quiet, super fuel efficient alternative with the benefit of fewer emissions than the majority of our 2-stroke counterparts.

HEDGE CUTTER

Powered by Honda's torquey Mini 4-stroke engine, the Honda hedgecutter will operate at any angle with ergonomic vibration reducing controls so you can work comfortably for longer.

TILLERS

Honda's range of versatile, easy to start and easy to use tillers make cultivating larger gardens a joy.

This brochure has been produced to help you choose the Honda Lawn & Garden products that are right for you. For further advice, see your local Honda dealer and experience the range first hand.

SAFETY EQUIPMENT

UVEX GRAVITY ZERO GLASSES

Part No: L08SGL06GZ
- Exceeds AS/NZS 1337 standards - Medium impact protection
- Maximum UV protection - High-performance polycarbonate lenses
- Multiple settings to suit different face shapes

UVEX CYBRIC GLASSES

Part No: L08SGL06CY
- AS/NZS 1337 medium impact approved
- High-tech coatings providing highest UV protection
- Impact resistant polycarbonate dual lenses
- Ergonomically designed for nose bridge and temples
- Adjusts in 5 positions with stop lock



SAFETY CHAPS

Part No: L08BC006G
- Comfortable poly cotton lining
- Tough polyester outer
- Flexible needle punched padding provides protection from flying stones and debris
- Elasticised fastening straps for ease of attachment
- Flap over boot eliminates rubbish entering boot



HEADBAND EARMUFFS

Part No: L08EM006R
- Class 5 protection for use in noise 105dB to less than 110dB
- Steel wire provides robust construction to withstand demanding use
- Snap-in ear cushions make replacement quick and easy



EARMUFF VISOR COMBO

Part No: L08VE006R
- High-impact face protection
- Class 3 hearing protection
- Can be used as a set or individually
- Replacement parts available
- Ratchet head harness on face shield



RIGGER GLOVES

Part No: L08GL008
- Premium cow grain beige glove
- Soft feel provides dexterity
- Wing thumb, stitch-free palm
- Sizes M,L,XL



HRU19R BUFFALO BUCK

- Ideal for the residential user
- Powerful, long-lasting 4-stroke GCV160 OHV/OHC engine
- Lightweight, easy to push, rustproof aluminium deck with a 19" cut
- Starts first time every time with Honda's famous one pull easy start system
- Smooth and easy to manoeuvre with 200mm dual sealed ball-bearing wheels
- Fewer stops with huge 54 litre polymer catcher

HRU19D – BUFFALO BUCK MULCH & CATCH

- Mulching option saves time with fewer stops to empty catcher
- Environmentally friendly as nutrient-rich cuttings are returned to the soil

HRU19R
\$779

HRU19D
MULCH & CATCH
\$819



STARTS FIRST TIME EVERY TIME RELIABILITY



FOUR-STROKE TECHNOLOGY

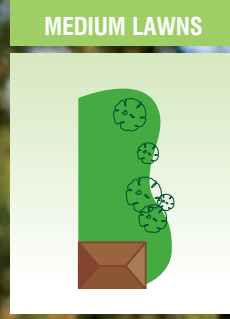
4 STARTS FIRST TIME EVERY TIME

4 NO FUEL MIXING

4 LESS NOISE

4 MORE POWER

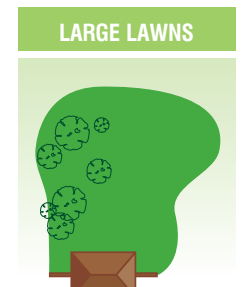
4 THE ENVIRONMENT



HRU216 M1 BUFFALO CLASSIC

- Built with new Honda Mow-Safe Technology for your safety
- Ideal for large lawns and the serious contractor
- Powerful, long-lasting 4-stroke GXV160 OHV engine features a durable cast iron bore
- Starts first time every time with Honda's famous one pull easy start system
- Environmentally friendly as nutrient-rich cuttings are returned to the soil

HRU216 M1
MULCH & CATCH
\$1619



Wheels

Modern design with 200mm dual sealed ball-bearing wheels. Uses high-quality compounds to enhance durability and drive traction.

Front Bar

Newly designed front bar will protect the front of the cutter deck and is sturdy enough to be used as a lifting and tie down point.

Blade Brake

Honda's Rotostop® System stops the blade rotation within 3 seconds of releasing the handle, while the engine continues to run. This significantly reduces the risk of injury to the operator and passers-by when emptying the grass bag. It also allows the operator to safely transport the mower over footpaths when it is in self-propelled mode, while the blades are disengaged.

Folding Handle

Features an improved locking and pivoting system for ease of transportation and increased durability and rigidity.



Easy Start & Zone Start

The easy to reach starter handle looks after your back and eliminates the need to get close to the cutting area.

Height Adjuster Handle

Improved design makes height adjustments easy.



Swing-back Blades



Proven swing-back blade system for superior cutting, engine protection and ease of maintenance.



Handle Grip

Features 25mm diameter tube for improved comfort and durability.

Self-Propelled

Self-propelled with a 3-speed gearbox that lets you vary your speed as you go. Makes mowing large areas a breeze.

Snorkel

Snorkel-type air filtration provides superior engine protection in harsh Australian conditions.

Grass Bag

Newly developed 70 litre dacron grass bag uses dust direction technology, keeping the dust low and away from the operator's face. Also features a durable polymer grass catcher base which promotes easy emptying while extending the life of the grass bag.

Mulching Plug



Easy to install mulching plug makes mulching a breeze.

Discharge Guard



New high-strength polymer design enables direct rear discharging without the need for any special attachments. Provides added functionality and cuts down work time by removing the need to empty the grass bag.

Rear Safety Shield



New flexible polymer design delivers superior grass catching performance, durability and safety.

HRU197 BUFFALO BULL

- Ideal for medium lawns and commercial jobs
- Powerful long-lasting 4-stroke GSV190 OHV/OHC engine featuring a durable cast iron bore
- Lightweight, easy to push, rustproof aluminium deck with a 19" cut
- Starts first time every time with Honda's famous one pull easy start system
- Smooth and easy to manoeuvre with 200mm dual sealed ball-bearing wheels
- Fewer stops with huge 54 litre polymer catcher

HRU197D – BUFFALO BULL MULCH & CATCH

- Mulching option saves time with fewer stops to empty catcher
- Environmentally friendly as nutrient-rich cuttings are returned to the soil

HRU197
\$919

HRU197D
MULCH & CATCH
\$959

HRU217D BUFFALO BULL

- Ideal for large lawns and commercial jobs
- Powerful, long-lasting 4-stroke GSV190 OHV/OHC engine featuring a durable cast iron bore
- Gets the job done quickly with a huge 21" cut rustproof aluminium deck
- Starts first time every time with Honda's famous one pull easy start system
- Smooth and easy to manoeuvre with 200mm dual sealed ball-bearing wheels
- Mulching option saves time with fewer stops to empty catcher
- Environmentally friendly as nutrient-rich cuttings are returned to the soil
- Easily converted to a standard catcher mower by removing the mulching plug and fitting grass catcher
- Fewer stops with massive 73 litre dacron grass catcher

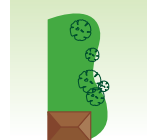
HRU217D
MULCH & CATCH
\$1099

Buffalo Bull



*Conditions apply

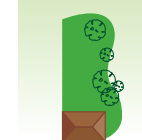
MEDIUM LAWNS



LARGE LAWNS



MEDIUM LAWNS



HRU196 BUFFALO CLASSIC

- Ideal for medium lawns and the serious contractor
- Powerful, long-lasting 4-stroke GXV160 OHV engine featuring a durable cast iron bore
- Lightweight, easy to push, rustproof aluminium deck with a 19" cut
- Starts first time every time with Honda's famous one pull easy start system
- Smooth and easy to manoeuvre with 200mm dual sealed ball-bearing wheels
- Fewer stops with huge 54 litre polymer catcher

HRU196D – BUFFALO CLASSIC MULCH & CATCH

- Mulching option saves time with fewer stops to empty catcher
- Environmentally friendly as nutrient-rich cuttings are returned to the soil

HRU196
\$959

HRU196D
MULCH & CATCH
\$999



ZONE START

Places starter cord at optimum height for easier starting with less bending over.



MULCHING PLUG

Technologically advanced mulching system saves time and water as mulch is returned to the soil.



4-BLADE SYSTEM

The blade disk system with 4 swing-back blades ensures efficient cutting, mulching and catching.

Buffalo Classic



*Conditions apply

HRU216 SU BUFFALO CLASSIC

- Ideal for large lawns and the serious contractor
- Powerful, long-lasting 4-stroke GXV160 OHV engine features a durable cast iron bore
- Gets the job done quickly with a self-propelled 3-speed gearbox and huge 21" cut rustproof aluminium deck
- Starts first time every time with Honda's famous one pull easy start system
- Smooth and easy to manoeuvre with 200mm dual sealed ball-bearing wheels
- Fewer stops with massive 73 litre dacron catcher

HRU216D SU – BUFFALO CLASSIC MULCH & CATCH

- Mulching option saves time with fewer stops to empty catcher
- Environmentally friendly as nutrient-rich cuttings are returned to the soil

HRU216 SU
\$1549

HRU216D SU
MULCH & CATCH
\$1589



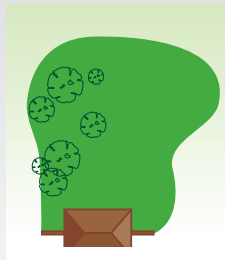
3-SPEED GEARBOX

Self-propelled mower models now use a 3-speed gearbox so you can vary your speed as you mow.

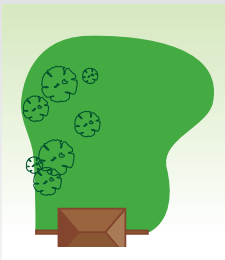
LARGE LAWNS



LARGE LAWN



LARGE LAWN



COMPACT LAWN



HUT216

\$949

HUT216 BUFFALO UTILITY

- Ideal for large lawns and commercial jobs
- Powerful, long-lasting 4-stroke GXV160 OHV engine featuring a durable cast iron bore
- Rugged yet lightweight solid steel deck with huge 21" cut
- No front edge and side discharge make easy work of long grass
- Starts first time every time with Honda's famous one pull easy start system
- No fuel mixing – runs on unleaded fuel
- Smooth and easy to manoeuvre with 200mm dual sealed ball-bearing wheels
- Ergonomically designed handles for greater user comfort
- Versatile 11-stage height-adjustment lever



HRC216

\$2749

HRC216 COMMERCIAL

- Tough, hard-working and packed with features for the garden professional
- Self-propelled, commercial hydrostatic transmission, 21" cut and powered by the GXV160
- Fewer stops with a huge 88 litre grass bag capacity
- Blade brake system for safety of the operator



HRE370

\$419

HRE370 ELECTRIC

- Ideal for manicuring smaller lawns
- Powerful and reliable 1.3kW electric motor
- Lightweight rustproof polymer deck with 14.5" cut
- Compact design for easy use and storage
- Lightweight dacron catcher with rear strap for easy emptying
- Environmentally friendly – no fuel or exhaust fumes



*Conditions apply

LAWNMOWER SPECIFICATIONS & ACCESSORIES

| MODEL | Electric | Buffalo Buck | Buffalo Buck Mulch & Catch | Buffalo Bull | Buffalo Bull Mulch & Catch | Buffalo Bull Mulch & Catch | Buffalo Classic | Buffalo Classic Mulch & Catch | Buffalo Classic Mulch & Catch | Buffalo Classic | Buffalo Classic Mulch & Catch | Buffalo Utility |
|---------------------------------|------------------|-------------------|----------------------------|-----------------------------|-----------------------------|-----------------------------|-------------------------|-------------------------------|-------------------------------|-------------------------|-------------------------------|-------------------------|
| Product Code | HRE370 K1 | HUR19R PU | HUR19D PU | HUR197 PU | HUR197D PU | HUR217D PU | HUR196 PU | HUR196D PU | HUR216 M1 | HUR216 SU | HUR216D SU | HUT216 PU |
| User | Domestic | Domestic | Domestic | Domestic & Contractor | Domestic & Contractor | Domestic & Contractor | Contractor | Contractor | Contractor | Contractor | Contractor | Contractor |
| Engine Model | Electric | GCV160 | GCV160 | GSV190 | GSV190 | GSV190 | GXV160 | GXV160 | GXV160 | GXV160 | GXV160 | GXV160 |
| Engine Spec. | 1.3kW | OHV/OHC | OHV/OHC | OHV/OHC with Cast Iron Bore | OHV/OHC with Cast Iron Bore | OHV/OHC with Cast Iron Bore | OHV with Cast Iron Bore | OHV with Cast Iron Bore | OHV with Cast Iron Bore | OHV with Cast Iron Bore | OHV with Cast Iron Bore | OHV with Cast Iron Bore |
| Filtration System | - | - | - | - | - | - | - | - | Yes* | - | - | - |
| Chassis | Polymer | Aluminium | Aluminium | Aluminium | Aluminium | Aluminium | Aluminium | Aluminium | Alloy | Aluminium | Aluminium | Steel |
| Cutting Width | 14.5" (368mm) | 19" (482mm) | 19" (482mm) | 19" (482mm) | 19" (482mm) | 21" (533mm) | 19" (482mm) | 19" (482mm) | 21" (533mm) | 21" (533mm) | 21" (533mm) | 21" (533mm) |
| Cutting Height Adjustment | 4 Wheels | 1 Lever | 1 Lever | 1 Lever | 1 Lever | 1 Lever | 1 Lever | 1 Lever | 1 Lever | 1 Lever | 1 Lever | 1 Lever |
| Cutting Height Range | 3 Stages 25-55mm | 11 Stages 16-76mm | 11 Stages 16-76mm | 11 Stages 16-76mm | 11 Stages 16-76mm | 11 Stages 16-76mm | 11 Stages 16-76mm | 11 Stages 16-76mm | 11 Stages 16-76mm | 11 Stages 16-76mm | 11 Stages 16-76mm | 11 Stages 20-75mm |
| Self-propelled | No | No | No | No | No | No | No | No | Yes | Yes | Yes | No |
| Speeds | - | - | - | - | - | - | - | - | 3 | 3 | 3 | - |
| Wheel Diameter | 160mm | 200mm | 200mm | 200mm | 200mm | 200mm | 200mm | 200mm | 200mm | 200mm | 200mm | 200mm |
| Grass Catcher | Dacron Bag | Polymer | Polymer | Polymer | Polymer | Dacron Bag | Polymer | Polymer | Dacron Bag ^o | Dacron Bag | Dacron Bag | No |
| Catcher Capacity | 35 Litres | 54 Litres | 54 Litres | 54 Litres | 54 Litres | 73 Litres | 54 Litres | 54 Litres | 70 Litres | 73 Litres | 73 Litres | No |
| Fuel Type | No | Unleaded | Unleaded | Unleaded | Unleaded | Unleaded | Unleaded | Unleaded | Unleaded | Unleaded | Unleaded | Unleaded |
| Fuel Tank Capacity | No | 0.91 Litres | 0.91 Litres | 0.91 Litres | 0.91 Litres | 0.91 Litres | 1.5 Litres | 1.5 Litres | 1.5 Litres | 1.5 Litres | 1.5 Litres | 1.5 Litres |
| Mulching Capability | No | Optional | Yes | Optional | Yes | Yes | Optional | Yes | Yes | Optional | Yes | No |
| Rear Discharge Capability | - | - | - | - | - | - | - | - | Yes | - | - | - |
| Operator Presence Control (OPC) | No | No | No | No | No | No | No | No | Yes [#] | No | No | No |
| Dry Weight | 13.7kg | 30.6kg | 30.9kg | 31.8kg | 32.1kg | 35kg | 34.5kg | 35.2kg | 52.5kg | 44.3kg | 44.6kg | 32kg |
| Price | \$419 | \$779 | \$819 | \$919 | \$959 | \$1099 | \$959 | \$999 | \$1619 | \$1549 | \$1589 | \$949 |

BUFFALO RANGE BLADE & SNORKEL KITS

| | | | | | | | | | | | | |
|------------------------------|---|-------------|-------------|-------------|-------------|-------------|-------------|--------------|-------------|-------------|-------------|-------------|
| Full 4-Blade Kit | - | 06720VK0600 | 06720VK0600 | 06720VK0600 | 06720VK0600 | 06720VJ9600 | 06720VK0600 | 06720VK0600 | 06720VJ9600 | 06720VJ9600 | 06720VJ9600 | - |
| High Lift Blade Kit | - | 06720VA3K80 | 06720VA3K80 | 06720VA3K80 | 06720VA3K80 | 06720VJ9000 | 06720VA3K80 | 06720VA3K80 | 06720VJ9000 | 06720VJ9000 | 06720VJ9000 | - |
| Low Lift Blade Kit | - | 06720VK0A10 | 06720VK0A10 | 06720VK0A10 | 06720VK0A10 | 06720VJ9A00 | 06720VK0A10 | L128319H010 | 06720VJ9A00 | 06720VJ9A00 | 06720VJ9A00 | - |
| 10 Pair High Lift Blade Pack | - | L128319H010 | L128319H010 | L128319H010 | L128319H010 | L128321H010 | L128319H010 | L128319L010 | L128321H010 | L128321H010 | L128321H010 | - |
| 10 Pair Low Lift Blade Pack | - | L128319L010 | L128319L010 | L128319L010 | L128319L010 | L128321L010 | L128319L010 | 06720VK0A10 | L128321L010 | L128321L010 | L128321L010 | - |
| 10 Pair Nut & Bolt Set | - | L1283BLT010 | L1283BLT010 | L1283BLT010 | L1283BLT010 | L1283BLT010 | L1283BLT010 | L1283BLT010 | L1283BLT010 | L1283BLT010 | L1283BLT010 | - |
| Mower Snorkel Kit | - | L1245P06R01 | L1245P06R01 | L1245P06030 | L1245P06030 | L1245P06030 | L1245P06020 | L1245P06 R20 | L1245P06020 | L1245P06020 | L1245P06020 | L1245P06020 |

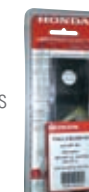
HRU SNORKEL KIT

For improving engine protection and performance in dusty and extreme conditions.



HRU BLADE KIT

Available for all Honda mowers. Designed for professional cutting performance, these blades are made from high-quality steel which has been heat treated to maximise blade strength. Bulk blade kits are also available.



PREMIUM OIL & FUEL CAN

Developed specifically for Honda engines. Manufactured to deliver high-performance lubrication, Genuine Honda Oil is available in 1, 5 and 20 litre containers.



* Double element air-cleaner with snorkel system
^o Dacron with nylon polyimide and HDPE base
[#] BBC Blade Brake Clutch System

UMS425 BENT SHAFT BRUSHCUTTER

- Delivers excellent torque and performance via its Generation II, 25cc, Mini 4-stroke engine
- Easy-grip loop handle, lightweight with bent shaft for excellent manoeuvrability
- 360° fully inclinable operation
- Easy to use tap-and-go nylon line head
- Price includes safety goggles

UMS425

BENT SHAFT

\$429

NO FUEL MIXING



FOUR-STROKE TECHNOLOGY



*Conditions apply



ECOLOGY CONSCIOUS TECHNOLOGY

4 STARTS FIRST TIME EVERY TIME

4 NO FUEL MIXING

4 LESS NOISE

4 MORE POWER

4 THE ENVIRONMENT



2-STROKE vs 4-STROKE

Cut costs with a Honda 4-stroke

Testing is based on usage of 3 hours per day, 5 days per week, equating to 45 weeks per year. The running cost of fuel and oil for a Honda 4-stroke brushcutter is almost half the price of running a 2-stroke brushcutter. This means that for every 1-2 years of using a Honda brushcutter you will save enough money on fuel and oil to be able to purchase a new Honda brushcutter.*



*Fuel and oil consumption figures were derived by an independent testing laboratory on new products of similar power output. 2-stroke fuel to oil mix is based on a ratio of 50:1. 4-stroke oil consumption is based on 1cc/hour maximum oil change frequency of 45 hours use. The images used are for illustration purposes only and do not accurately represent fuel and oil consumption.

UMK425
LOOP HANDLE



- Ergonomically designed easy-grip loop handle
- Delivers excellent torque and performance via its Generation II, 25cc, Mini 4-stroke engine
- Starts first time every time and requires no messy fuel mixing

UMK425
LOOP HANDLE
\$619

- 360° fully inclinable operation
- Makes tough jobs easy with a heavy-duty tap-and-go nylon line head
- Environmentally friendly with low emissions, less noise and low fuel consumption
- Comfortable to use, solid drive shaft with unique anti-vibration engine mount
- Price includes safety goggles and a single operator harness

UMK435
LOOP HANDLE



- Ergonomically designed easy-grip loop handle
- Delivers excellent torque and performance via its Generation II, 35cc, Mini 4-stroke engine
- Starts first time every time and requires no messy fuel mixing

UMK435
LOOP HANDLE
\$759

- Comfortable to use, solid drive shaft with unique anti-vibration engine mount
- 360° fully inclinable operation
- Environmentally friendly with low emissions, less noise and low fuel consumption
- Makes tough jobs easy with a 4-tooth metal blade plus a heavy-duty tap-and-go nylon line head
- Price includes safety goggles and a single operator harness

UMK425
BIKE HANDLE



- Delivers excellent torque and performance via its Generation II, 25cc, Mini 4-stroke engine
- 360° fully inclinable operation
- Ergonomically designed easy-grip bike handle
- Starts first time every time and requires no messy fuel mixing
- Makes tough jobs easy with a 4-tooth metal blade plus a heavy-duty tap-and-go nylon line head
- Environmentally friendly with low emissions, less noise and low fuel consumption
- Comfortable to use, solid drive shaft with unique anti-vibration engine mount
- Price includes safety goggles and a full operator harness

UMK425
BIKE HANDLE
\$729

UMK435
BIKE HANDLE



- Delivers excellent torque and performance via its Generation II, 35cc, Mini 4-stroke engine
- 360° fully inclinable operation
- Ergonomically designed easy-grip bike handle
- Starts first time every time and requires no messy fuel mixing
- Environmentally friendly with low emissions, less noise and low fuel consumption
- Makes tough jobs easy with a 4-tooth metal blade plus a heavy-duty tap-and-go nylon line head
- Comfortable to use, solid drive shaft with unique anti-vibration engine mount
- Price includes safety goggles and a full operator harness

UMK435
BIKE HANDLE
\$819



BRUSHCUTTER ACCESSORIES

| | | | | | | | | |
|---|--|--|---|---|---|--|---|--|
| <p>TRIMMER LINE Honda trimmer line is competitively priced and comes in three diameters (2mm, 2.5mm and 2.75mm) and three packed weights: 125g, 225g and 450g.</p> | <p>3-TOOTH BLADE Part No: L1000-UMK-001 9" (228 x 1.6mm) steel blade for cutting larger areas, tough weeds and light scrub.</p> | <p>4-TOOTH BLADE Part No: L1000-UMK-002 9" (228 x 1.6mm) steel blade for cutting larger areas, heavy grass and weeds.</p> | <p>4-TOOTH SCALLOP BLADE Part No: L1000-UMK-102 9" (228 x 1.6mm) steel blade for cutting large areas, heavy grass and weeds.</p> | <p>8-TOOTH BLADE Part No: L1000-UMK-003 9" (228 x 1.6mm) steel blade for thinning and clearing tough weeds, light undergrowth and scrub.</p> | <p>80-TOOTH BLADE Part No: L1000-UMK-004 9" (228 x 1.6mm) steel blade for thinning and clearing light undergrowth, scrub and small saplings.</p> | <p>ALLOY HEAD Part No: L1000-UMK-016 Sturdy cast unit holds single strand of Honda trimmer line for general-purpose work.</p> | <p>MANUAL HEAD-SLIDER Part No: 72560-VL1-003 This sturdy manual trimmer line head is constructed from heavy-duty plastic. Suitable for straight shaft models only.</p> | <p>TAP-AND-GO HEAD Straight Shaft Part No: 72560VL1631 Bent Shaft Part No: 72560VL1811 Made of heavy-duty materials, this bump-feed trimmer line head is as efficient as it is durable. No more stopping to draw more line – just "tap and go" for hours of brushcutting.</p> |
|---|--|--|---|---|---|--|---|--|



HHB25 BLOWER

- Effortless power from its 25cc, Mini 4-stroke engine with throttle cruise control
- Starts first time every time with Honda's famous one pull easy start system
- User-friendly quiet operation
- Environmentally friendly with low emissions and low fuel consumption
- No fuel mixing – runs on unleaded petrol
- Optional round nozzle also available
- Quick and easy 'high air velocity' clean up
- Improved safety and performance due to a unique anti-suction fan cover
- Comfortable to use, vibration isolating handle with rubberised hand grip
- Lightweight design
- Wind velocity 70m/sec (252km/hr)
- Air volume 630m³/h

HHB25
\$589



LOW NOISE & EMISSIONS



HHH25D HEDGE CUTTER

- Effortless power from its 25cc, Mini 4-stroke engine
- Starts first time every time with Honda's famous one pull easy start system
- Environmentally friendly with low emissions, low noise and low fuel consumption
- No fuel mixing – runs on unleaded petrol
- Lightweight design
- Precision trimming from 3-way adjustable rear handle
- Double-sided blade with a 720mm cutting length
- Comfortable to use anti-vibration engine mounts
- Safe to use, 2-motion throttle trigger

HHH25D
\$889



LIGHTWEIGHT, ERGONOMIC DESIGN



*Conditions apply



ECOLOGY CONSCIOUS TECHNOLOGY

FOUR-STROKE TECHNOLOGY



*Conditions apply



ECOLOGY CONSCIOUS TECHNOLOGY

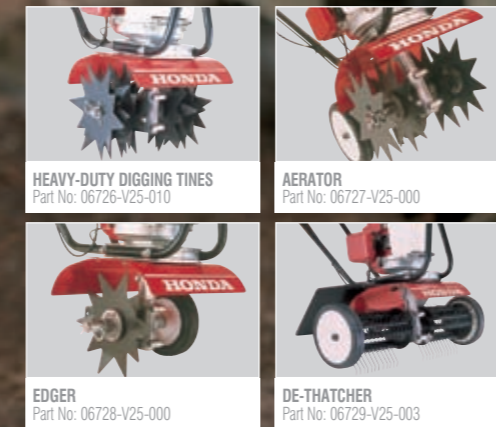


FG110 TILLER

- Powered by Honda's advanced Generation II, 25cc, Mini 4-stroke engine
- 230mm tine width
- Fold-over handles for convenience
- Dual direction off/run/off switch
- Heavy-duty debris shield for safety
- Range of easy-to-fit accessories available

FG110
\$949

FG110 TILLER ACCESSORIES



FOUR-STROKE TECHNOLOGY

F220 TILLER

- Powerful and torquey GXV57 4-stroke engine
- Lightweight design
- 545mm tine width
- Multi-step adjustable handlebars
- Deadman clutch for safety
- Ideal for confined areas

F220
\$1539



F501 TILLER

- Powerful GX160 4-stroke engine
- 2 forward gears and 1 reverse
- 914mm tine width
- Lightweight design
- Multi-step adjustable handlebars
- Deadman clutch for safety

F501
\$2229



FR800 TILLER

- Big GX240 4-stroke engine
- 3 forward gears and 1 reverse
- 507mm tine width
- Superb balance perfect for big, tough jobs
- Deadman clutch for safety

FR800
\$3899



FR750 TILLER

- GX200 manual start 4-stroke engine
- 600mm tine width
- 2 forward gears and 1 reverse
- Honda's revolutionary Active Rotary System (patented coaxial counter-rotating tine drive mechanism)
- Lockable differential for tough or virgin soil
- Deadman clutch for safety

FR750
\$4449



You'll find Honda generators incorporate the type of innovations and cutting-edge technology that no other manufacturer can match. For example, our EU and some of our EM series generators incorporate an advanced microcomputer-controlled sinewave inverter. This guarantees consistent commercial quality electricity and makes them ideal for use with sensitive electrical equipment such as computers.

GENERATORS

THE LATEST INNOVATIONS GIVING YOU THE POWER TO GO ANYWHERE

These generators also feature a built-in Eco-Throttle that automatically adjusts engine speed to meet load demand for improved efficiency and fuel economy. And with engine encasing sound-proofing on many models, Honda generators are able to exceed the toughest noise regulations in the world.

USING YOUR HONDA GENERATOR

Before connecting an appliance to a Honda generator, you need to check the generator has enough capacity (watts) to both start the appliance up and keep it running at maximum level. This includes checking both the maximum and rated output.

CALCULATING RATED POWER

Some appliances, like light globes, have a clearly marked wattage. However, most give the required number of watts (the 'rated power') on an attached compliance plate. In cases where the appliance only refers to required amperes (amps or A) simply convert to watts using the formula below.

CONVERTING AMPS TO WATTS

Multiply the amperage listed on the compliance plate by the voltage of the mains electrical system (240 volts). For example, a 5 amp appliance requires 1200 watts to run (5 x 240).

START-UP POWER

In addition, appliances with electric motors such as drills, sanders, polishers and power saws need an extra 'boost' of watts at start up. This can be substantially higher than the operating figure printed on the compliance plate, and depends on the type of motor. Split Phase Motors require 8 to 10 times their rated power for start up and Capacitor Motors need 4.5 times their rated power to start. The more common Series Motors need 1.5 times their rated power to start up. If you are unsure, check with the appliance manufacturer.

PARALLEL CONNECTION

To double your power and duplicate the output of a single larger generator, Honda's versatile EU10i, EU20i, EU30is and EU30iu Handy generators can be linked quickly and easily using a special connection cable.



SUPER-QUIET SERIES

EU Series generators represent the leading edge of portable power technology. Ranging from 700 to 6500 watts, these totally enclosed, super-quiet generators are ideal for recreational and home back-up applications.



DELUXE SERIES

EM Series generators range from 3000 to 6500 watts and offers a wide variety of enhanced functions for home back-up and general-purpose situations.



ECONOMY SERIES

EP Series generators are ideal for residential and commercial use and range from 2200 to 5500 watts, offering legendary Honda reliability with a 'no-frills' approach to your basic power needs.

CHOOSING THE HONDA GENERATOR THAT'S RIGHT FOR YOU

To help you choose the Honda generator that's right for your needs, we've put together a chart listing commonly used appliances and their average power requirements. Please note that it is a guide only. If you need more information on any Honda generator, simply contact your local Honda dealer.

USAGE

| | | Watts Required | EX 7' | EU 10i' | EU 20i | EU 30is | EU 30iu HANDY | EU 65is |
|------------|--------------------------|----------------|-------|---------|--------|---------|---------------|---------|
| LEISURE | Caravan | | | | | | | |
| | Air Conditioner | 900-1600 | | | • | • | • | • |
| | Caravan Fridge | 100-200 | • | • | • | • | • | • |
| | Caravan Hot Water Heater | 1500 | | | • | • | • | • |
| BUSINESS | Cash Register | 50-100 | • | • | • | • | • | • |
| | Copier | 1500+ | | | • | • | • | • |
| | Laptop Computer | 500 | | • | • | • | • | • |
| COMMERCIAL | 140 amp AC Welder | 5000 | | | | | | • |
| | 1hp Engine | 3000+ | | | | • | • | • |
| | 9" Angle Grinder | 1500-2500 | | | | • | • | • |
| | Power Saw | 1500-2000 | | | | • | • | • |
| | Drill 3/8" | 500-700 | | • | • | • | • | • |
| HOME | Globe | 60 | • | • | • | • | • | • |
| | Hair Dryer | 1000-1500 | | | • | • | • | • |
| | Microwave | 1560+ | | | • | • | • | • |
| | Kettle | 1600-2000 | | | • | • | • | • |
| | Toaster | 900-1200 | | | • | • | • | • |
| | TV | 200 | • | • | • | • | • | • |
| | Household Fridge | 300-600 | | • | • | • | • | • |

These are recommendations only. For further usage information on the complete range of Honda generators, see your local Honda Power Equipment Dealer. *EX7 and EU10i models are not recommended for commercial use.

ADVANCED 4 TECHNOLOGY ON THE GO!



4 PLAY

For camping and leisure applications, Honda portable power is the perfect way to enjoy the great outdoors with all the comforts of home. Portable generators are also ideal for outdoor events like concerts, races, parties, trade shows and more.



4 HOME

When the lights go out, it's more than just an inconvenience. Power outages can also result in financial loss due to spoiled food, lost work time, broken pipes and even water damage to buildings and furniture. A quiet, reliable Honda generator can easily keep your family safe and secure through power-related emergencies. It can also be used to charge your 12-volt car battery.*



4 WORK

Why are Honda generators number one on the job? Easy. Reliability and durability. On construction sites, time is money; crews can't afford to be idle due to a lack of on-site power.



EU20i

- Maximum 2000W/240 volt AC, 8 amp/12 volt DC can run appliances and charge batteries simultaneously
- Whisper-quiet operation from 53dB (A)
- Delivers better than commercial quality electricity
- Lightweight 21kg
- Delivers greater fuel efficiency via the built-in Eco-Throttle
- Engine is protected via low oil alert system
- Up to 15 hours of continuous operation on a full fuel tank

EU20i
\$2189



FOUR-STROKE TECHNOLOGY

- 4** STARTS FIRST TIME EVERY TIME
- 4** NO FUEL MIXING
- 4** LESS NOISE
- 4** MORE POWER
- 4** THE ENVIRONMENT

ADVANCED 4 TECHNOLOGY

EU10i

- Output of 1000W/240 volt AC, 8 amp/12 volt DC can run appliances and charge batteries simultaneously
- Whisper-quiet operation from 52dB (A)
- Delivers better than commercial quality electricity
- Lightweight 13kg
- Delivers greater fuel efficiency via the built-in Eco-Throttle
- Engine is protected via low oil alert system
- Up to 8 hours of continuous operation on a full fuel tank



EU10i
\$1499

EX7

- Output of 700W/240 volt AC, 6 amp/12 volt DC can run appliances and charge batteries simultaneously
- High-quality electricity is generated via the built-in cyclo-converter
- Whisper-quiet 56dB (A)
- Lightweight 12kg
- Engine is protected via the low oil alert system
- Up to 4.5 hours of continuous operation on a full fuel tank



EX7
\$1069

EU30is

- Maximum 3000W/240 volt AC, 12 amp/12 volt DC can run appliances and charge batteries simultaneously
- Whisper-quiet operation from 51dB (A)
- Delivers better than commercial quality electricity
- Lightweight for easy transportation – weighs only 59kg
- Starts first time every time with convenient electric start and recoil start back-up
- Delivers greater fuel efficiency via the built-in Eco-Throttle
- High-speed multi-point alternator is integrated into the engine to reduce size and weight
- Low oil alert system protects engine
- Offers up to 20 hours of continuous operation on a full fuel tank



EU30is
\$4299

EU65is

- Output of 6500W/240 volt AC
- Quietest generator in its class (52dB (A)) obtained by a separate triple chamber construction
- Up to 12.3 hours of continuous operation time on a full fuel tank
- Greater performance and fuel efficiency via automatic Eco-Throttle
- Delivers better than commercial quality electricity
- Lightweight, compact (115kg) unit
- Self-diagnosis with 'I-Monitor'
- Easy maintenance and long-term cost savings
- Convenient electric start and recoil start back-up
- Famous starts first time every time, year after year reliability
- Remote start control kit optional



EU65is
\$6399

EM50is

- Output of 5000W/240 volt AC. Rated output 4500W
- Quiet operation at 67dB (A)
- Delivers better than commercial quality electricity
- Starts first time every time with convenient electric start and recoil start back-up
- Easy to store and transport with a sturdy fold-down carry handle and large-diameter wheels
- Remote start control kit optional
- Delivers greater fuel efficiency via the built-in Eco-Throttle
- 'I-Monitor' self-diagnosis function protects your investment
- Environmentally friendly with low exhaust and noise emissions
- Offers up to 14.6 hours of continuous operation on a full fuel tank



EM50is
\$4929

EU30iu HANDY

- The EU30iu has a light, compact body for handy carrying plus low noise for convenience as well as an increased ease of use. The power and portability of this compact design are a great asset for camping and caravanning.
- Maximum 3000W/240 volt AC, 8.3 amp/12 volt DC can run appliances and charge batteries simultaneously
 - Whisper-quiet operation from 57dB (A)
 - Delivers better than commercial quality electricity
 - Lightweight for easy transportation – weighs only 35kg
 - Starts first time every time
 - Delivers greater fuel efficiency via the built-in Eco-Throttle
 - High-speed multi-point alternator is integrated into the engine to reduce size and weight
 - Low oil alert system protects engine
 - Offers up to 7.7 hours of continuous operation on a full fuel tank



EU30iu HANDY
\$3999



NEW EU30iu HANDY FEATURES

- The T-frame and all resin cover combined with the new lightweight generator make it the world's lightest and most compact generator
- Folding traction handle and large mobility tyres combine to make for easy carrying and smooth movement
- Low operating noise level as a result of resonator and high-performance sound-absorbent materials used



EM65is

- Output of 6500W/240 volt AC. Rated output 5500W
- Quiet operation at 69dB (A)
- Delivers better than commercial quality electricity
- Starts first time every time with convenient electric start and recoil start back-up
- Easy to store and transport with a sturdy fold-down carry handle and large-diameter wheels
- Remote start control kit optional
- Delivers greater fuel efficiency via the built-in Eco-Throttle
- 'I-Monitor' self-diagnosis function protects your investment
- Environmentally friendly with low exhaust and noise emissions
- Offers up to 12.5 hours of continuous operation on a full fuel tank



EM65is
\$5679

EM30

- Output of 3000W/240 volt AC, 12 amp/12 volt DC can run appliances and charge batteries simultaneously
- Quiet operation at 68dB (A)
- High-quality electricity is generated via the built-in cyclo-converter
- Compact and lightweight for easy transportation – 31kg
- Engine is protected via a low oil alert system
- Offers up to 6 hours of continuous operation on a full fuel tank



EM30
\$2549

EP4500CX

- Output of 4500W AC, 8.3 amp/12 volt DC
- High output performance via Honda's GX340 engine
- Extended operating time with large-capacity fuel tank and fuel gauge
- Easy and reliable starting
- Reduced noise (72dB (A)) and vibration levels with large 'silent' muffler and anti-vibration engine mounts
- Lightweight 82kg unit
- Added equipment and engine protection with AC/DC circuit breakers and oil alert
- Easy to use control panel featuring 15 amp sockets, battery charger and circuit protector
- Fully welded steel frame



EP4500CX
\$2279

EP2200CX

- Output of 2200W AC, 8.3 amp/12 volt DC
- High output performance via Honda's GX160 engine
- Extended operating time with large-capacity 14.5 litre fuel tank featuring a fuel gauge
- Easy and reliable starting
- Reduced noise (66dB (A)) and vibration levels with large 'silent' muffler and anti-vibration engine mounts
- Lightweight 45kg unit
- Added equipment and engine protection with AC/DC circuit breakers and oil alert
- Easy to use control panel featuring 15 amp sockets, battery charger and circuit protector
- Fully welded steel frame



EP2200CX
\$1199

EP5500CX

- Output of 5500W AC, 8.3 amp/12 volt DC
- High output performance via Honda's GX390 engine
- Extended operating time with large-capacity fuel tank featuring a fuel gauge
- Reduced noise (74dB (A)) and vibration levels
- Easy to use control panel featuring 15 amp sockets, battery charger and circuit protector



EP5500CX
\$2489

EP3100CX

- Output of 3100W AC, 8.3 amp/12 volt DC
- High output performance via Honda's GX240 engine
- Extended operating time with large-capacity 24 litre fuel tank and fuel gauge
- Easy and reliable starting
- Reduced noise (70dB (A)) and vibration levels with large 'silent' muffler and anti-vibration engine mounts
- Lightweight 68kg unit
- Added equipment and engine protection with AC/DC circuit breakers and oil alert
- Easy to use control panel featuring 15 amp sockets, battery charger and circuit protector
- Fully welded steel frame



EP3100CX
\$1579

EP5500CXS

- Output of 5500W AC, 8.3 amp/12 volt DC
- High output performance via Honda's GX390 engine
- Extended operating time with large-capacity fuel tank featuring a fuel gauge
- Convenient electric start available on CXS model only (battery not included)
- Reduced noise (74dB (A)) and vibration levels
- Easy to use control panel featuring 15 amp sockets, battery charger and circuit protector



EP5500CXS
\$3039



*Conditions apply

HONDA PUMPS

WX10 \$669

- Powered by Honda's Generation II, 25cc, Mini 4-stroke engine
- Economical 1" volume pump
- Delivers 140L/min capacity
- Maximum total head 36m
- Maximum suction head 8m



WX15 \$829

- Economical 1.5" volume pump
- Maximum total head 40m
- Maximum suction head 8m
- Delivers 240L/min capacity



WB20 \$879

- Portable 2" volume pump
- Maximum total head 32m
- Maximum suction head 8m
- Delivers 600L/min capacity



WB30 \$1029

- Portable 3" volume pump
- Maximum total head 28m
- Maximum suction head 8m
- Delivers 1100L/min capacity



WT20 \$2179

- Portable 2" trash pump
- Maximum total head 26m
- Maximum suction head 8m
- Delivers 650L/min capacity



WT30 \$2519

- Portable 3" trash pump
- Biggest in range
- Maximum total head 30m
- Maximum suction head 8m
- Delivers a massive 1300L/min capacity



HONDA ENGINES

GX MINI 4-STROKE

- Three to choose from including the GX25 and GX35
- Fully inclinable OHC engine



GC & GCV SERIES

- Eight to choose from
- Horizontal and vertical shaft available
- OHC domestic engine



GX SERIES

- Over seventy to choose from
- Horizontal shaft
- OHV commercial engine



HP450

- Powered by the Honda GXV160 OHV 4-stroke engine
- Shifts up to 450kg of payload via a 0.18m³ tray
- Crawler tension spring to protect crawler against objects inserted between crawler and wheels



HP450
\$6049

GXV SERIES

- Ten models to choose from
- Vertical shaft engines
- OHV commercial engine



GD DIESEL SERIES

- Horizontal shaft



GX V-TWIN SERIES

- New generation V-twins
- Three horsepower choices, six models
- OHV commercial engine



*Conditions apply



THE TOP TEN REASONS WHY IT PAYS TO UPGRADE TO AN ADVANCED 4-STROKE TECHNOLOGY HONDA

- 4** FAMOUS STARTS FIRST TIME EVERY TIME, YEAR AFTER YEAR RELIABILITY
- 4** SUPERIOR 4-STROKE ENGINEERING THAT DELIVERS PLENTY OF TORQUE AND POWER
- 4** EASY MAINTENANCE AND LONG-TERM COST SAVINGS
- 4** WHISPER-QUIET OPERATION
- 4** OUTSTANDING FUEL EFFICIENCY AND NO NEED TO MIX OIL AND PETROL
- 4** PARTS AND SERVICE AVAILABILITY THROUGH HONDA'S EXTENSIVE DEALER NETWORK
- 4** SUPERIOR DURABILITY AND LONGER LIFE
- 4** MINIMAL POLLUTION
- 4** PEACE OF MIND AND EXTENSIVE WARRANTIES ON ALL PRODUCTS
- 4** EASY OPERATION AND MANOEUVRABILITY

WHY BUY FROM AN AUTHORISED HONDA DEALER?

All Honda Power Equipment products have been engineered to be the very best in their fields. That's why we insist they're only sold through the very best dealers.

- Dealers are specially trained to know everything there is to know about Honda Power Equipment
- You receive the best possible sales advice when purchasing
- You get outstanding after-sales support to help you get the best from your Honda equipment year after year
- Only your Honda dealer has qualified factory-trained mechanics and a comprehensive range of Honda parts on hand
- When it's time to upgrade, many Honda dealers are more than happy to take trade-ins

WHY INSIST ON HONDA GENUINE PARTS?

All around the world, Honda is renowned for its quality, reliability and performance. Honda Genuine Parts are no exception. Protect your investment by only using Honda Genuine Parts.

ONLY HONDA GENUINE PARTS:

- Carry a 12 month warranty*
- Are exactly the same as those used in manufacture
- Are designed to ensure optimum performance levels
- Help maintain your Honda's maximum resale value
- Are competitively priced when their longevity is compared to that of non-genuine parts



HONDA AUSTRALIA MOTORCYCLE AND POWER EQUIPMENT PTY LTD, 1954-1956 SYDNEY ROAD, CAMPBELLFIELD, VICTORIA 3061. ABN 96 006 662 862. TELEPHONE: (03) 9270 1111 FAX: (03) 9270 1136

All prices quoted are recommended retail including GST and are correct at time of printing. Not all products listed in this brochure are available from every authorised Honda Power Equipment dealer. Honda MPE reserves the right to change models, specifications and price without notice. Full warranty details are available from your authorised Honda Power Equipment dealer. For more information on the Honda Power Equipment range, visit your local Honda Power Equipment dealer. For dealer locations, call 1300 1 HONDA. Pictures are for illustrative purposes only.*Full terms and conditions available at authorised Honda dealerships.

*4-year warranty. Domestic use only. Not applicable to engines sold as separate units. Full terms and conditions available at authorised Honda dealerships.



*Conditions apply



www.honda.com.au