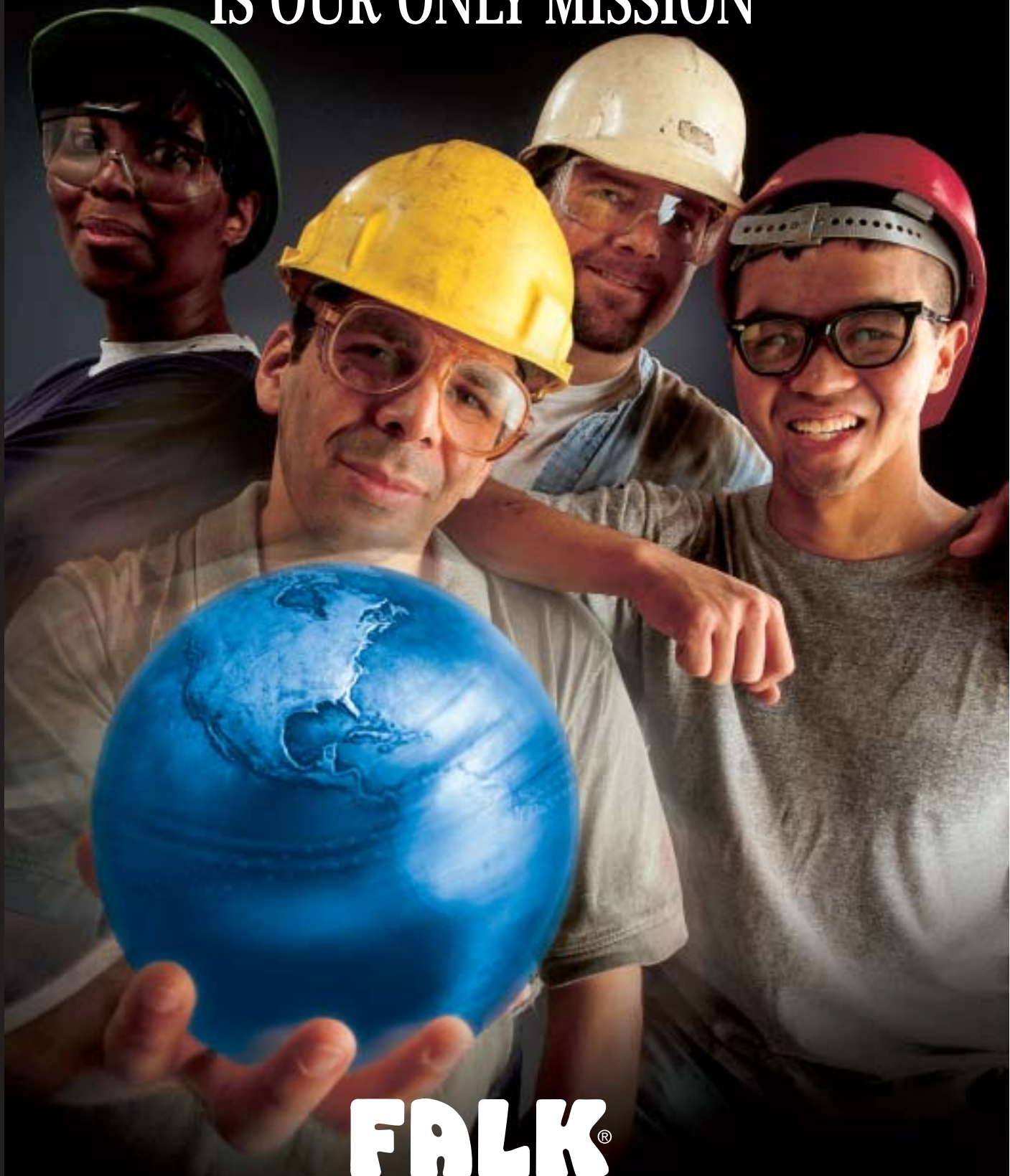


YOUR POWER TRANSMISSION
IS OUR ONLY MISSION



FALK®

A guide to **FALK®** products and services

Drive One Gear Drives	6
Parallel Shaft Gear Drives (A-Plus) . . .	7
Right Angle Shaft Gear Drives (A-Plus)	7
Conveyor Drives (Alignment Free) . .	8
High-Thermal Capacity Drives (Type Y/YB)	8
Concentric Drives (UltraMax)	9
Shaft-Mounted Drives (Quadrive) . .	9
AirMax Breather	9
Gearmotor Drives (Ultramite)	10
Worm Gear Drives (Omnibox)	11
Mixer Drives (Ram)	11
Low Speed Backstops (True Hold) .12	
Fixed-Fill Fluid Couplings	12
Variable-Fill Fluid Couplings	12
Marine Drives	13
Elastomer Couplings (Wrapflex) . . .14	
Grid Couplings (Steelflex)	14
Gear Couplings (Lifelign)	15
Disc Couplings (Freedom)	15
Mill Products	16, 17
Custom Drives	18
Falk School	18
Repair/Rebuild (Renew)	19

The Falk Corporation

Tel: 414.342.3131

Toll-free USA/Canada: 1.800.545.5215

Fax: 414.937.4359

E-mail: falkinfo@falkcorp.com

Web: www.falkcorp.com

© Copyright 1988, 2002.

The Falk Corporation. All rights reserved.

A-PLUS, DRIVE ONE, FALK, FREEDOM, LIFELIGN, OMNIBOX, QUADRIVE, RAM, RENEW, SPEED QUOTE, STEELFLEX, TA TAPER, TORUS, TRUE HOLD, ULTRAMAX, ULTRAMITE, and WRAPFLEX are registered trademarks. ALIGNMENT FREE DRIVE, CLUB GEAR HEAD, MAGNUM SEAL, and SPEEDSELECT are trademarks of the Falk Corporation.

Form 860503G, May 2002, supersedes May 2001.

FALK, no matter what the industry or where you're located



Today's increasingly competitive global marketplace has changed the rules... for everybody.

Until recently, power transmission buying decisions often focused on a single factor. It could have been anything from quality, performance, or reliability – to low initial price, lowest total cost, turnaround time or after sales service. But now, more than ever, you need the total package to get the best, most profitable solution – from a flexible, reliable partner.

Falk delivers like nobody else and wants to be your preferred global provider of superior power transmission solutions.

We provide the best overall customer experience through our legendary reliability, innovative products and services, exceptional people, and speed in everything we do. Plus, the industry's first standard 3-Year Heavy-Duty Warranty provides unmatched peace of mind.

Take a closer look at what separates Falk from the rest. The more you know, the more you'll be convinced.

You can't afford *not* to use Falk.

FALK, to make you more productive

Accelerate the selection process

Quick access to unrivaled technical support saves you both time and money in the specifying process.

- Speak directly to experienced application engineers to be sure you get the quality Falk solution needed to minimize operating costs and maximize bottom-line productivity
- Systems expertise and solution breadth mean Falk provides complete packaged drive systems, saving you both specification and installation time
- Club Gear Head offers members exclusive online privileges, including SpeedBuy order entry, daily order status updates, and a wealth of unique technical resources at www.falkcorp.com
- Speed Lit puts virtually all Falk literature conveniently at your fingertips, including the Falk Product Guide and current versions of every major Falk product catalog
- Speed Quote helps you produce complete product selections in minutes simply by following on-screen prompts and instructions
- Speed Line provides an extensive archive of full-scale, single-layer two-dimensional drawings of most standard Falk products. The detailed index helps you quickly find the files you want for review or insertion directly into your AutoCad® master drive system drawings



Fast turnaround... worldwide

From standard, off-the-shelf drives and couplings to one-of-a-kind ring gears, Falk meets your global torque management needs more efficiently than ever.

- Production facilities in the U.S., Canada, Mexico, Brazil, and Australia. Great Britain provides global availability of quality Falk products and services
- Flow manufacturing technology offers more cost-effective production and reduced lead times
- 900+ distributor locations and 80+ Falk sales engineers provide local availability
- Both metric and imperial products are stocked and shipped throughout the world to help minimize downtime
- Modular components allow most products to be assembled for specific requirements from Falk facilities and distributor locations around the world
- SpeedBuy online purchasing is available to qualifying OEMs and distributors to streamline purchasing and minimize transaction costs

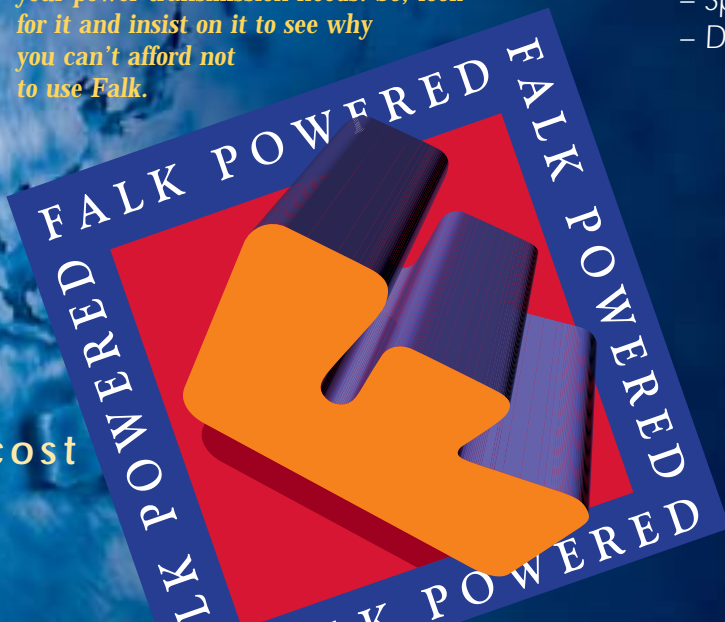
Wider range of applications • Global solutions • Lowest

Lowest total cost of ownership

Ongoing leadership in "total lowest cost" operation helps Falk consistently earn top supplier ratings in third-party surveys.

- Initial cost of torque reduced by 30%-70% over the last 5 years
- 3-Year warranty now standard on "heavy-duty" products 
- "Replace-in-place" couplings eliminate equipment re-alignment and periodic maintenance
- Industry's first Lifetime Removal Guarantee on shaft-mounted drives, gearmotors, and Drive One gear drives
- Alignment Free® conveyor drive eliminates foundations and shaft alignments
- Split Riding Rings drastically reduce downtime and installation costs

The Falk Powered symbol is your assurance that you're getting a unique combination of Falk's legendary quality and reliability, along with a host of operational advantages, that consistently provide the best customer experience for all your power transmission needs. So, look for it and insist on it to see why you can't afford not to use Falk.



Unmatched responsiveness

Falk support helps balance capital investment against spares inventories, operating costs and maintenance costs... to keep you producing... and to show why Falk is your lowest total cost supplier.

- Speed Parts online spare parts information and pricing helps you more efficiently manage spares inventories and maintenance programs
- Online service data includes information on lube intervals, tightening torques, and alignment procedures
- Field service from factory-trained experts is available worldwide
- Falk School presents the latest field-practical gear drive and coupling service techniques
- RENEW® restores like new or upgraded performance for significantly less than the price of new
- Falk support also includes:
 - Project planning & consulting
 - Plant Surveys
 - Diagnostics & troubleshooting
 - Breakdown service
 - Surplus equipment listings
 - Spares networking
 - Drive exchange program

• **Unmatched**



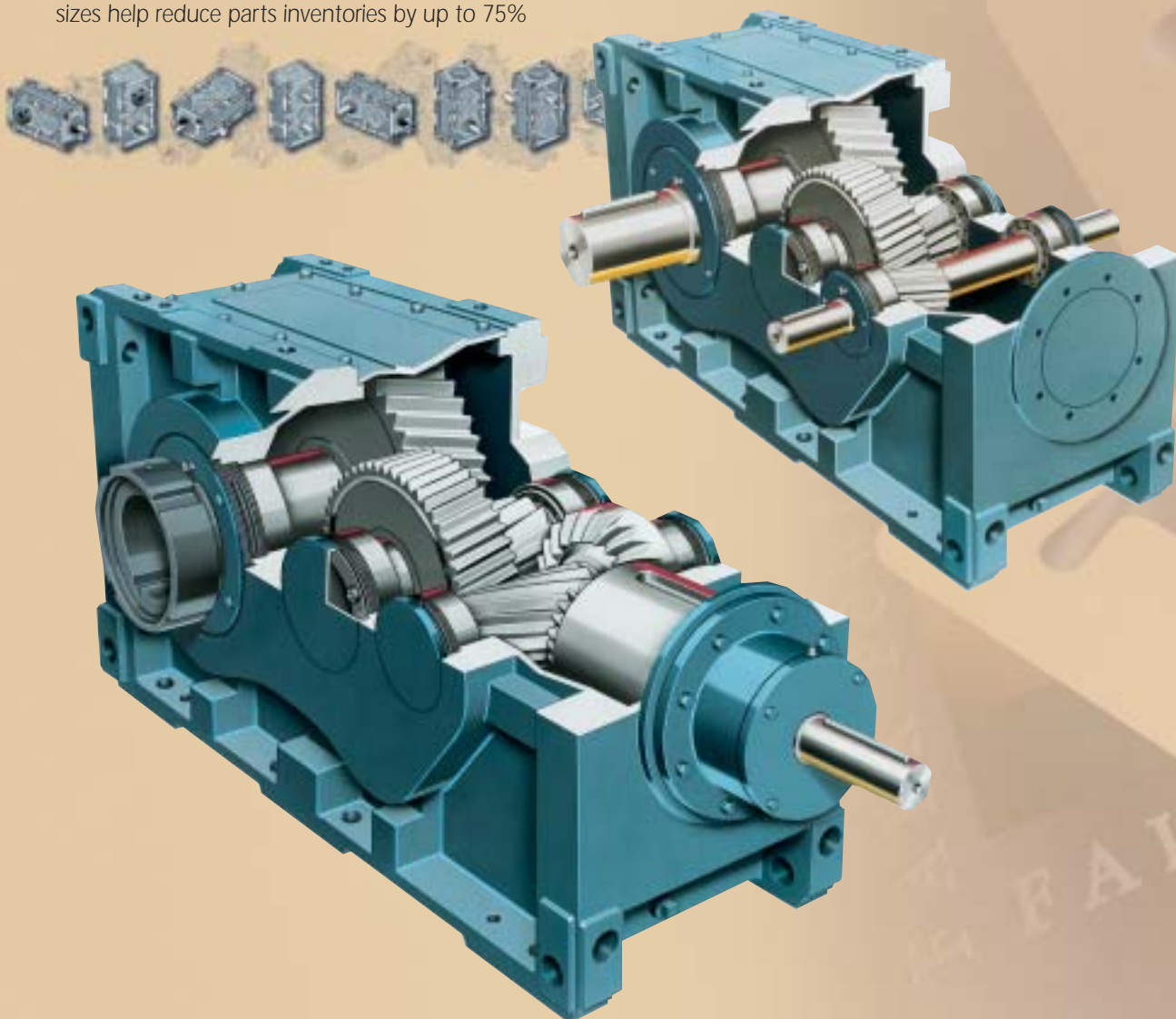
You can't afford not to use Falk.

FALK Drive One®

One Drive For One World

- 7 sizes in development with ratings from 5 kNm - 60 kNm (45,000 lb-in - 530,000 lb-in)
- One design covers shaft-mounted, parallel shaft, right-angle, horizontal, vertical and foot-mounted applications, reducing spares inventories by up to 40%
- Exclusive 6-sided mounting for unmatched flexibility
- Hard metric design creates a truly global solution
- 60% fewer parts than traditional designs helps reduce costs by 30% per torque delivered
- Fewer parts and commonality of parts across sizes help reduce parts inventories by up to 75%

Drive One redefines lowest total cost torque management for heavy-duty industry. Now, one drive system combines low initial cost with lowest total cost for a wider range of applications than ever before possible. The result: Drive One makes Falk quality, value and performance practical for virtually any customer... anywhere in the world. And it allows customers with global operations to standardize on a single drive solution, providing a significantly lower total cost for the entire torque management program.



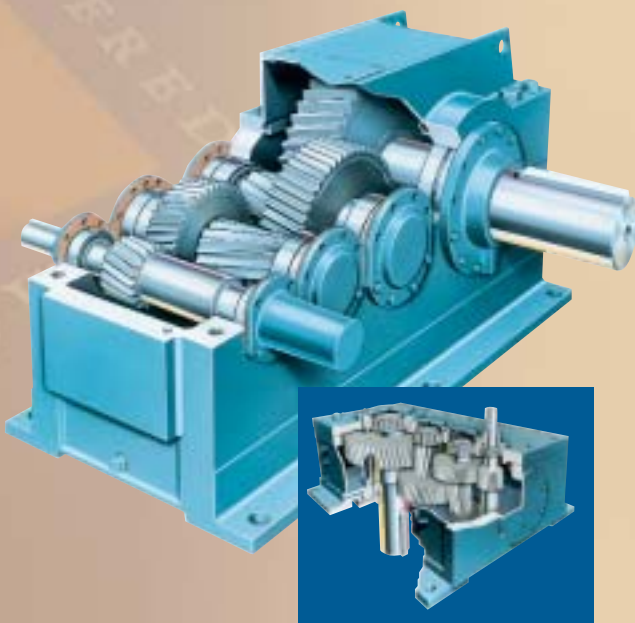
FALK A-Plus® Parallel Shaft Gear Drives – Horizontal or Vertical Mounting

Heavy-Duty Drives for Heavy-Duty Applications

- 17 sizes for foot, flange or shaft mounting
- Solid or hollow low-speed shafts
- Ratios: 1.8:1 to 437:1
- Capacities: 2 937 Nm to 621 448 Nm (26,000 to 5,500,000 lb-in)
- Power ratings to 14 168 kW (19,000 hp)



Strong, durable, compact, and energy-efficient, Falk A-Plus® parallel shaft gear drives serve a broad range of industrial applications. All Falk A-Plus gear drives feature DIN 6 quality (AGMA quality 11), case-carburized and finish ground, high strength helical gearing, fabricated steel housings, positive lubrication, and Magnum™ no-leak dirt-proof seals.



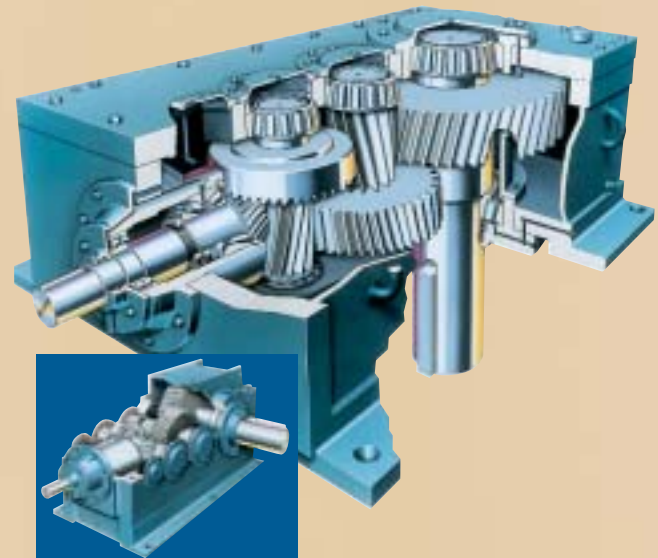
FALK A-Plus® Right-Angle Shaft Gear Drives – Horizontal or Vertical Mounting

The “Right Angle” on Heavy-Duty Performance

- 13 sizes for foot, flange or shaft mounting
- Solid or hollow low-speed shafts
- Ratios: 5.06:1 to 357:1
- Capacities: 10 937 Nm to 621 448 Nm (96,800 to 5,500,000 lb-in)
- Power ratings to 3 484 kW (4,673 hp)



Falk's compact and durable heavy-duty, right-angle gear drives have wide application in industry. All series “AB” drives feature carburized, root-peened, skived spiral bevel gears and DIN 7 quality (AGMA quality 10), case-carburized and finish ground, high strength helical gearing, fabricated steel housings, positive lubrication, and Magnum no-leak dirt-proof seals.



FALK Alignment-Free™ Conveyor Drive

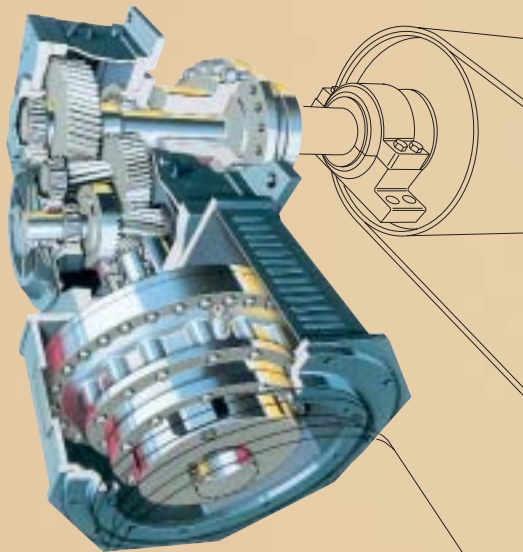
Falk Alignment-Free Drives for Trouble-Free Conveyor Operation

- 5 sizes for right-angle shaft mounting
- Flange or hollow low-speed shaft connections
- Use with fluid couplings or electrical soft starts
- Ratios: 13.95:1 to 34.74:1
- Power ratings from 90 kW to 630 kW (125 to 800 hp)



Falk's Alignment-Free, Shaft-mounted, Conveyor Drives meet all surface and underground

belt conveyor application requirements. By eliminating foundations, installed costs are reduced by as much as 20%. Shaft misalignment, a major cause of costly failures and downtime, is eliminated. Plus, a symmetrical housing substantially reduces spares inventory costs.



FALK High-Thermal Capacity Gear Drives – Type Y & YB

Application Tested - Proven Performance

- 20 sizes for parallel or right-angle shaft configurations
- Ratios: Parallel Shaft - 1.84:1 to 291.9:1, Right-Angle Shaft - 1.50:1 to 1207:1
- Capacities to 316 373 Nm (2,800,000 lb-in)
- Power ratings to 7 457 kW (10,000 hp)



Falk's high-thermal capacity gear drives feature through-hardened precision-machined helical gearing, carburized and lapped spiral bevel gearing, fabricated steel housings, large oil sumps, positive lubrication and Falk's exclusive no-leak Magnum Seals.™ Falk's "Y" series gear drives have proven reliability in industry for over 40 years.



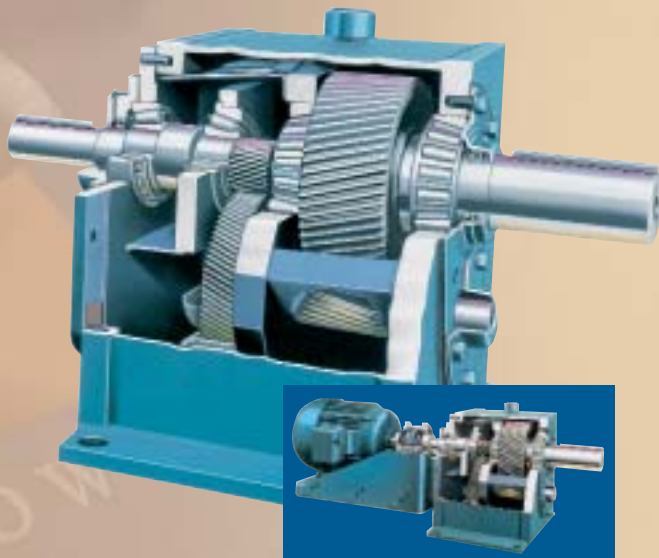
FALK UltraMax[®] Concentric Drive

The Industry's Largest Selection

- 12 sizes
- Concentric configurations
- Ratios: 1.5:1 to 985:1
- Capacities to 60 000 Nm (530,000 lb-in)
- Power ratings to 1 268 kW (1,700 hp)
- Optional scoop, flange, or baseplate mounted motors



An economical alternative to parallel shaft drives in the medium kilowatt/horsepower range. Modular construction and standard accessories and options allow for quick product shipment.



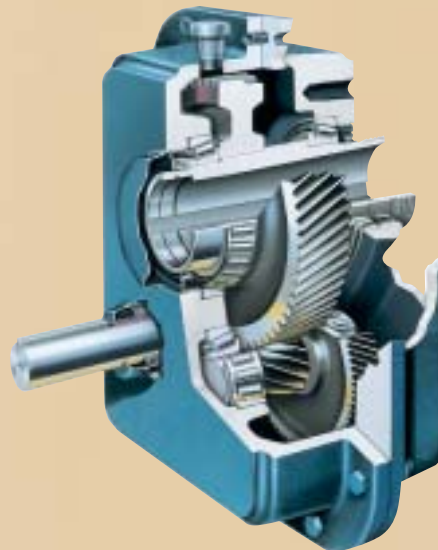
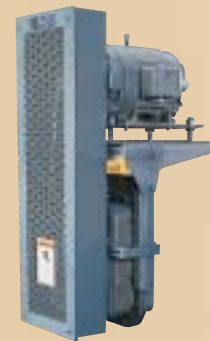
FALK Quadrive[®] Shaft-Mounted Drive

Easiest On - Easiest Off

- 11 sizes for flange or shaft mounting
- Horizontal or vertical mounting
- Bushing bores from 25 to 160 mm (1 inch to 6-1/2 inch)
- 5 to 350 rpm output speeds
- Capacities to 36 547 Nm (350,000 lb-in)
- Power ratings to 224 kW (300 hp)

An economical alternative to right-angle shaft mounted drives, featuring a V-belt input for easy speed changes and reduced spares inventory. Quadrives feature a "Torque Assist" TA Taper[®] bushing that eliminates binding and makes installation and removal an "easy-on, easy-off" proposition.

The Quadrive modular design makes accessorizing for CEMA screw conveyor and other applications a simple matter. Drive removal is guaranteed, regardless of length of service or operating conditions, or we'll replace it free.



AirMax[™] Breather

Unique Moisture & Particulate Protection for Enclosed Gear Drives (Optional Accessory)

Reduce premature gear drive failure. During the "inhalation" cycle the AirMax media blocks moisture from entering. During the "exhalation" cycle the media allows moisture to exit.



You can't afford not to use Falk.

FALK Ultramite® Gearmotors

A Drop-in Replacement for SEW Eurodrive® Gearmotors

UC Helical Concentric

- 7 sizes
- .19 kW to 37 kW (1/4 hp to 50 hp) capacity
- Ratios from 1.4:1 up to 16,000:1
- C-face and solid inputs, inch or metric
- Base and flange mounted designs
- Horizontal or vertical mountings

Like all Ultramite designs, the UC Concentric offers superior efficiency to traditional worm gears, in an affordable, modular package. This basic Ultramite design is ideal for any applications that call for a readily available, low-cost gear drive in the low to medium capacity range.

UW Right-Angle Helical Worm

- 8 sizes
- .19 kW to 37 kW (1/4 hp to 50 hp) capacity
- Ratios from 8:1 through 60,000:1
- C-face and solid inputs, inch or metric
- Base, shaft or flange mounted designs
- Straight bored hollow, tapered hollow shaft with TA bushings, or solid output shafts
- Horizontal or vertical mounting

While still offering superior efficiency to traditional worm gears, this design is the lowest-cost right-angle solution in the Ultramite family. Helical, high-speed gearing and durable, long-lasting performance make it ideal wherever an affordable, low horsepower right-angle drive is required. The UW also features our TA bushing which guarantees easy, positive removal... even after years of rugged service... or we replace the drive for free.



UJ Shaft-Mounted Offset Helical

- 6 sizes
- .19 kW to 30 kW (1/4 hp to 50 hp) capacity
- Ratios from 5:1 to 20,000:1
- C-face inputs provide convenient, beltless packages
- Base, shaft, or flange mounted designs
- Shaft-mounted designs utilize Falk's unique TA Taper bushing
- CEMA screw conveyor design
- Horizontal or vertical mounting

This clean, compact package is perfect wherever shaft mounting is desired, but V-belts aren't. The UJ also features our TA bushing which guarantees easy, positive removal... even after years of rugged service... or we replace the drive for free.

UB Right-Angle Helical Bevel

- 9 sizes
- .19 kW to 74 kW (1/4 hp to 100 hp) capacity
- Ratios from 8:1 to 10,000:1
- C-face and solid inputs, inch or metric
- Straight bored hollow, tapered hollow shaft with TA bushings, or solid output shafts
- Base, shaft or flange mounted designs
- Horizontal or vertical mounting

For maximum efficiency in a right-angle drive, select the UB. Helical and bevel gearing throughout makes this the most energy efficient Ultramite right-angle. It's a level of performance efficiency traditional worm gears simply cannot match. The UB also features our TA bushing which guarantees easy, positive removal... even after years of rugged service... or we replace the drive for free.

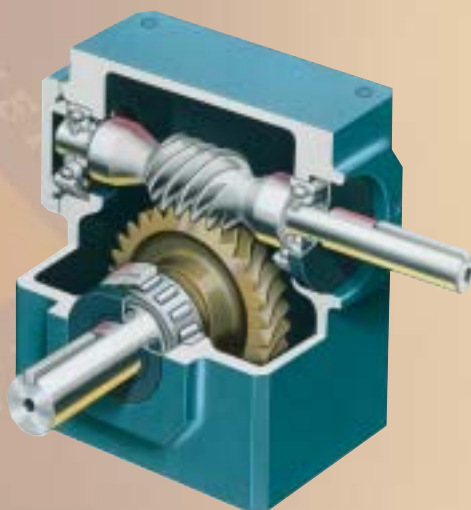


FALK Omnibox® Worm Gear Drives

Economy - Versatility - Interchangeability

- 14 sizes for foot, flange, or shaft mounting
- 34 mm thru 254 mm (1.33 inch thru 10 inch) centers
- Ratios from 5:1 to 3,600:1
- Capacities to 10 168 Nm (90,000 lb-in)
- Power ratings to 81 kW (100 hp)
- Vertical or horizontal inputs and outputs

Falk's Omnibox is all about long life and low operating costs. Viton® Double-lip seals, standard, deliver increased resistance to high temperature, abrasion and chemicals. O-rings on input and output covers eliminate gaskets and silicone sealants that are prone to leaks. And the entire system is 100% run and leak tested.

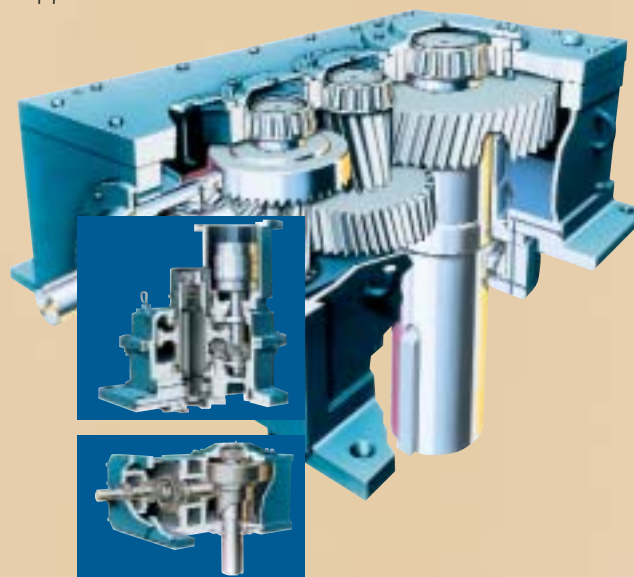


FALK Ram® Mixer Drives

Mixer Drives Designed to Drive Mixers

- 18 sizes in parallel shaft or right-angle shaft configurations
- Solid and hollow shafts
- Top, bottom, or side entry mixer mountings
- Ratios: 5.06:1 to 1,207:1
- Capacities to 429 000 Nm (3,800,000 lb-in)
- Power ratings to 4 100 kW (5,500 hp)

Falk's designed-for-the-job RAM Mixer Drives feature large diameter shafts, extended bearing life, no-leak drywells, precision helical and spiral-bevel gearing, and rugged, rigid housings – all engineered to handle tough mixing in pharmaceutical, chemical, food processing, waste-water, power-generation, mining, and pulp and paper applications.



FALK True Hold® Low Speed Backstops

Full-Load Tested for Faultless Performance

- 14 sizes
- Bores: 38 to 510 mm (1.5 in to 20.0 in)
- Capacities: 4 068 Nm to 1 012 847 Nm (3,000 to 747,000 lb-ft)
- Overrunning speeds from 1 to 2,800 rpm



Falk's Low Speed Backstops prevent reverse rotation in applications such as inclined conveyors, bucket elevators, fans, rotary pumps and kilns. Performance-proven NRT Backstops employ a roller/ramp design featuring free-wheeling cylindrical rollers that permit load engagement upon reversal. Tandem seals and grease-purge cavities extend service life. Available load sharing systems for multiple backstop installations increase versatility.



FALK Fixed-Fill Fluid Couplings

Softer Starts - Smooth Power Flow

- 11 sizes, 4 types
- Gear, disc, and grid coupling; hollow shaft and sheave connections
- Delay, extended-delay, and non-delay fills
- Power ratings to 1 119 kW (1,500 hp)
- Starting power adjustable from 40% to 250% of full-load torque
- Overload protection
- Centrifugal check valves



Used in a broad range of applications, Falk Fixed-Fill Fluid Couplings provide consistently longer, smoother, time-controlled starts with lower starting torques and softer torque transfer. Series HF fluid couplings' delay-fill chamber assures smooth operation during extended acceleration and minimizes slip under full-load. Ideal for conveyors using multiple drives, Falk Fluid Couplings allow for staggered motor starting and load sharing.

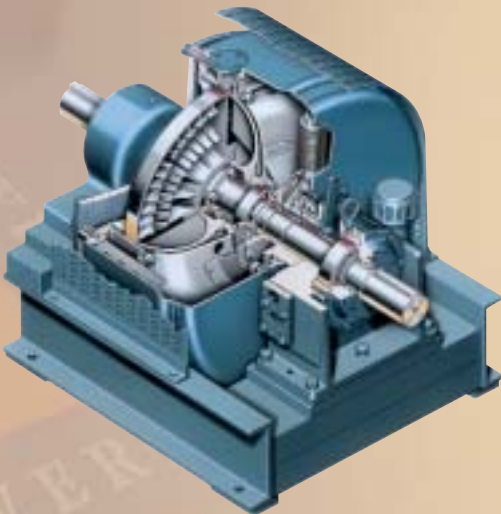


FALK Variable-Fill Fluid Couplings

Total Control of Starts, Speeds, Torques

- 3 sizes
- Manual, or electronic controls
- Capacities: 150 to 653 kW (200 to 875 hp)

Falk Scoop Control (series HC) Variable-Fill Fluid Drives provide the ultimate in close control of start-up and operating speeds and torques. Ideal on conveyors for dynamic multi-motor load sharing and ultra-long starts. Falk Variable-Fill Fluid Drives also deliver economical load declutching and speed trimming. Variable speed control is available for pump, fan and other centrifugal machines.



FALK Marine Drives

No Downtime Dependability

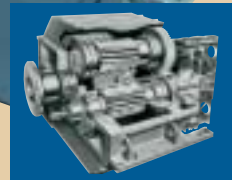
- Standard Reverse Reduction Drives:
MRH SERIES: Hydraulic clutches, lock-up with options for continuous slip and/or torque-up systems. Featuring high-efficiency gearing, high-bearing life, vibratory dampening and crash reversal protection

MR SERIES: Airflex clutches, thru hardened, heavy pitch gearing and high bearing life.

- Custom Drives:
Custom engineered marine drives in power ranges from 746 kW to 44 742 kW (1,000 to 60,000 hp)



Falk built its first Marine Drive in 1916, for a WW1 submarine tender. Since then Falk has supplied over 1,200 reverse reduction drives for tugboats and towboats and over 1,800 special reduction gears for cruise ships, aircraft carriers, tankers, ore carriers, and many other marine vessels.



You can't afford not to use Falk.

FALK Wrapflex® Elastomer Couplings

"Talk About Simple"

- 9 sizes, 3 types
- Polyurethane element has excellent wear and chemical resistance
- Bores to 186 mm (7.25 inch)
- Capacities to 15 000 Nm (132,900 lb-in)
- Simple to install and non-lubricated
- Standard nylon cover (sizes 5R-50R) with positive location and retention
- Optional epoxy coated cover for Sizes 5R-50R (standard on Sizes 60R-80R)



Falk's Wrapflex Couplings offers the SIMPLEST installation, element change-out and maintenance compared to other types of couplings. The tough, flexible one-piece split

polyurethane element can be replaced without moving hubs or realigning equipment. Steel hubs are machined with a special nose radius (patent pending) for improved contact and longer element life. Hubs are available in stainless steel or with QD or TL bushings. Backed by a 3-Year Warranty, the Falk Wrapflex coupling provides a non-lubricated, torsionally soft solutions for low to medium capacity applications.



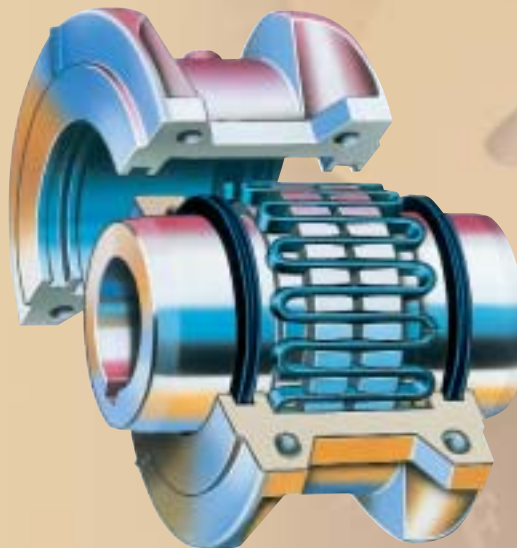
FALK Steelflex® Grid Couplings

The Ultimate "General Purpose" Coupling

- 25 sizes, 11 types
- Torsionally flexible
- Spring-steel grid flexing element
- Bores to 508 mm (20 inch)
- Capacities to 932 000 Nm (8,250,000 lb-in)
- Low initial and long-term cost



The easily replaceable grid in a Falk Steelflex coupling combines the high-load capabilities of a gear coupling with the flexibility of an elastomer design. Backed by a 5-year warranty, Falk Steelflex couplings require no periodic maintenance when lubricated with Falk supplied LTG (Long Term Grease) at installation.



FALK Lifelign® Gear Couplings

Economical - Long Lasting

- Flange sleeve and continuous sleeve
- 28 sizes, 20 types
- Torsionally rigid
- Precision-crowned, gear-to-gear flexing element
- Bores to 1 200 mm (50 inch)
- Capacities to 8 191 813 Nm (72,500,000 lb-in)
- Lowest initial cost for high capacities



Triple-crowned for maximum capacity, Falk Gear Couplings have larger bores and higher ratings providing lower cost selections. When used with Falk LTG (Long Term Grease), Falk Lifelign Gear couplings can operate 3 years without relubrication. Falk Gear couplings provide the low-cost, long-lasting answer to both small and large capacity coupling requirements.



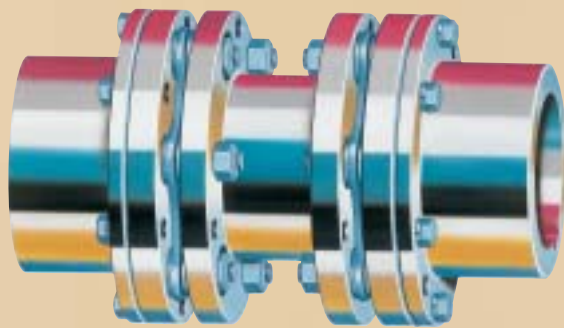
FALK Freedom® Disc Couplings

No Lubrication - No Maintenance

- 40 sizes, 29 types
- Torsionally rigid
- Stainless steel discs, unitized to simplify installation
- Bores to 400 mm (15.75 inch)
- Capacities to 313 210 Nm (2,772,000 lb-in)
- Low long term cost



Close tolerances and registered fits allow Falk Disc Couplings to provide continuous high-speed service with virtually no maintenance. Falk's unitized discpacks assure simple maintenance and a "no backlash" connection. Falk Disc Couplings are a practical alternative to lubricated and elastomer couplings for many applications.



FALK Mill Products

Casting a worldwide reputation for life-line equipment value

Critical power transfer systems can't afford to be down... period! That's why heavy industry around the world relies on Falk Mill Products to redefine total lifetime value.

PRODUCTS

- Gears – World's largest installed base features precision components, which combine proven application experience with state-of-the-art manufacturing techniques. The results are verified using the most extensive collection of inspection equipment anywhere
- Pinions – Specify genuine OEM spare or replacement pinions. Falk offers industry-leading turnaround. Higher hardnesses allow you to uprate power densities and pinion durability. In-house carburizing and grinding on the world's largest CNC gear grinder can significantly increase pinion life
- Reverse Engineering – Falk's vast array of inspection equipment allows for quick and accurate measurements to ensure exact duplication
- Steel Castings – Custom engineered chrome-nickel-moly steel castings produced using computer-aided solidification simulation models
- Split Kiln Tires – Falk split ring designs drastically reduce downtime and installation costs
- Drives – From standard to custom, Falk has the reliable drive for the job; and only Falk backs its heavy-duty drives with a full 3-Year Warranty... standard



UNMATCHED MANUFACTURING CAPABILITY

Full-service, state-of-the-art manufacturing facilities in the United States and Australia offer exceptional global availability of world-class quality power transmission solutions for heavy industry.

- Original equipment and replacement product manufacturing, as well as refurbishing and contract capabilities
- Pouring capacities up to 100 tons
- Gear cutting capacities up to 14 m
- Turning capacities up to 15 m
- Pit carburizing facility – 1.7 m diameter x 5.5 m deep
- Extensive experience with steel, both cast and fabricated, and Spheroidal Graphite Iron (SGI) helps you get the best material value for your gear application and performance requirements
- World-class steel casting, fabrication, and machine shop facilities, including "in-house" carburizing and heat treating capabilities





COMPREHENSIVE SUPPORT

For responsive customer support... before, during and after the sale, nobody else comes close.

- Instantly access technical information via the Web to simplify system specification and design
- Immediate, qualified technical support is only a phone call away
- Up-front analysis assures the right product and materials for your specific application
- Expert technical support helps keep equipment working; talk directly to an experienced engineer... in many cases, the same person who designed the equipment
- Plant Audits help to maximize productivity, operating life and cost efficiency
- Field service engineers provide on-site service and technical support
- GearProSM Seminars in design, installation and maintenance help you optimize system value
- Extensive refurbishing capabilities help you restore "like new" performance to aging, worn equipment for a fraction of the cost of total replacement

Whether you're interested in our original products, or need contract work to bring your own designs to life, nobody measures up to Falk Mill Products.



You can't afford not to use Falk.

FALK Custom Drives

Practical Solutions to Special Problems

Falk's design, development, and manufacturing capabilities are not limited to producing the items offered in our standard catalog. From computer-aided design to state-of-the-art quality control operations, few manufacturers are as well-equipped as Falk. At Falk, providing practical solutions to difficult design problems is routine.



Custom Drives that develop torque measured in millions of Newton-meters or inch-pounds is all in the day's work. Whatever the project size, whatever the special problems, if it involves custom engineering for power transmission, Falk offers a unique drive solution.

EXAMPLES OF FALK CUSTOM DRIVES

- Large conveyor drives
- Pulper drives
- Mill drives
- Yankee Dryer drives
- High-speed drives
- Sugar mill drives
- Crane drives

FALK School

Gear Drive & Coupling Maintenance Training

- Drive assembly and disassembly
- Coupling installation and replacement
- Bevel gear adjustments
- Failure analysis



Falk School is four days of intensive "hands-on" Falk gear drive and coupling maintenance training for today's working maintenance mechanic. It is designed to provide participants with a basic understanding of the fundamentals of gear drive disassembly and assembly, including lubrication issues and failure analysis of gears, bearings, shafts and seals. Sessions feature parallel and concentric shaft gears, complete with setting bearing floats, setting of mounting distance and backlash for spiral bevel gears.

To review the School schedule for the year and register for the program, visit www.falkcorp.com.



FALK Renew®

Like new, or better, for less

In those instances when new equipment simply isn't a practical option, Falk RENEW can reliably return your drive system components to original performance specifications... or exceed them.

Falk RENEW restores, repairs and rebuilds your components with the same concerns for product integrity, quality and performance that have made Falk the worldwide industry standard for over a century. Falk RENEW... a fundamental part of Falk's closed loop approach to total customer-service and unmatched value.



RESPONSIVE REPAIR

- 24-hour emergency service
- Dedicated facility, machine tools and personnel
- Original order information and drawings

REPAIRED RIGHT THE FIRST TIME

- 18-month to 3-year "extended" coverage
- Genuine Falk parts
- Assembled, inspected and tested to Falk quality standards

EMERGENCY REPLACEMENT AVAILABILITY

- Access to all Falk inventories
- RENEW replacement inventory at www.falkcorp.com/renew
- Housing "core" inventory program
- Spare Search locates available replacements

Find out more about **FALK**

falkcorp.com

or CALL

THE FALK CORPORATION

Plant Locations

Main

P.O. Box 492 Zip 53201-0492
3001 W. Canal Street Zip 53208-4200
Milwaukee, WI USA
Phone: 1-800-852-FALK (3255) or
414-342-3131
FAX: 414-937-4359
E-mail: falkinfo@falkcorp.com
Internet: www.falkcorp.com

Falk Capitol Drive
12001 West Capitol Drive
Milwaukee, WI 53222-1003
414.438.3031
FAX: 414.438.3049

Falk Auburn
1600 Pumphrey Ave.
Auburn, AL 36832
334-321-9120
FAX: 334-821-9103

Falk Renew
1903 South Moorland Blvd
New Berlin, WI 53151
262-317-1420
FAX: 262-317-1428

Falk Australia Pty.
34-36 Broadmeadow Rd
Broadmeadow, NSW 2294
61-2-4962-8000
FAX: 61-2-4962-8001

Global Sales Offices

United States

Atlanta, GA
770-475-7975
Baltimore, MD
410-666-3537

Birmingham, AL
770-475-7975
Charleston, WV
304-744-7510
Charlotte, NC
704-531-9250
Chicago, IL
847-677-6492
Cincinnati, OH
513-563-9699
Cleveland, OH
330-528-1557
Dallas, TX
469-556-7313
Denver, CO
303-980-5131
Detroit, MI
248-696-2553
Houston, TX
281-477-9570
Kansas City, KS
913-685-3254
Memphis, TN
901-309-0340
Miami, FL
305-820-9339
Milwaukee, WI
262-646-4346
Minneapolis, MN
763-522-0994
New Orleans, LA
504-832-1448
Northeast
860-355-0478

Northwest
360-883-6557
Phoenix, AZ
480-460-7188
Pittsburgh, PA
412-563-1754
Rochester, NY
716-223-5205
St. Louis, MO
636-256-7600
Salt Lake City, UT
801-467-9762
Tampa, FL
941-358-1045

Canada

Calgary, AB
403-225-6630
Montreal, PQ
514-631-2163
Toronto, ON
416-674-0346
Vancouver, BC
604-946-8506

Latin America

Mexico, D.F.
52-5-333-2500
Santiago, Chile
56-2-231-5647
Sao Paulo, Brazil
55-11-882-1000

Europe

Sonthofen, Germany
49-8321-71485

Halifax, United Kingdom
44-1422-367736

Asia/Pacific

Korea
82-42-603-5644
Manila, Philippines
63-2-818-9434
Newcastle, Australia
61-2-4962-8000
Perth, Australia
61-8-9414-7800
Shanghai, China
86-21-6219-6847

Singapore
65-444-0388

Taiwan
886-7-556-0263

Distribution Centers

Auburn, AL
PH 334-821-9100
FAX 414-937-4003
Milwaukee, WI
PH 414-342-3131
FAX 414-937-4359
Sacramento, CA
PH 877-937-6744
FAX 414-937-4444
Toronto, ON
PH 416-675-6071
FAX 416-213-1020