



Product Catalog

Special Purpose Fuses

COOPER Circuit Protection

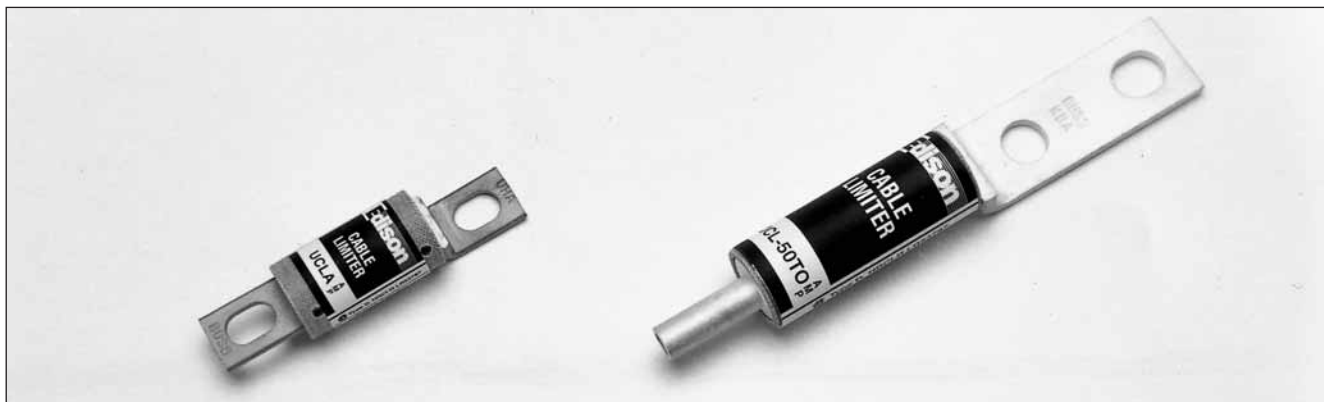


General Catalog Contents

Page

Special Purpose Fuses

Cable Limiters	UCL/UCLA/UCLC	.49
Capacitor Fuse, Non-Time-Delay	CCLB/CLCW	.54
Lift Truck Fuses	ACK/ACL/ALS	.56
Limiters	ANL Non-Time-Delay	.57
	ANN Very Fast-Acting	.58
High Speed Fuses,	130V - E13S	.59
	150V - E15SF/E15S	.62
	250V - E25SFX/E25S	.65
	500V - E50SF/E50S	.69
	600V - E60C	.72
	600V - E60SF/E60S	.74
	700V - E70SF/E70S	.76
	1000V - E100SF/E100S	.80
	British Style	.83
Trip Indicators		.89
Microswitch Adapter	MAI	.89
Type "D" Bottle Fuses		.90
Neozed Fuses		.90
NH Fuses		.91



Catalog Number UCL (25XX – 75XX) 600Vac or Less
Catalog Number UCLA 250Vac or Less

Catalog Number*	AC Volts Rating	Copper Cable Size	Cable Terminals Available
UCL25XX ⁽¹⁾	600	250MCM	T = Copper crimp tube O = Bolt-on blade offset from center B = Bolt-on blade, centered
UCL35XX ⁽¹⁾	600	350MCM	
UCL50XX ⁽¹⁾	600	500MCM	
UCL75XX ⁽¹⁾	600	750MCM	
UCLA	250	2/0 or 3/0 ⁽²⁾	Bolt-on blade, one end offset from center

*Contact Edison Customer Satisfaction for availability, limiters not shown, latest data or information.

⁽¹⁾ Choose terminals from "Cable Terminals Available" column to complete catalog number, EXAMPLE: "UCL-25T0" is rated for a "25" 250MCM copper cable and has a "T" tube for crimping and an "O" bolt-on blade, offset from center. Any combination of the three terminals may be selected.

⁽²⁾ A 4/0 aluminum cable may be used with a copper blade-to-aluminum cable connector.

Benefits:

- Cable limiters help to maintain electrical service by minimizing cable damage due to short circuit currents.
- Isolates faulted cable(s) in multiple cables per phase installations.
- Several cable termination types available.

Applications:

- Residential: 250Vac limiters can be used to protect individual service cables tapped from a single transformer.
- Non-Residential: 600Vac cable limiters should be specified to protect parallel service cables in 120/208Vac, 277/480Vac etc. systems.

Cable Limiter Specifications

Voltage Rating: UCL25XX – 75XX, 600Vac
UCLA, 250Vac

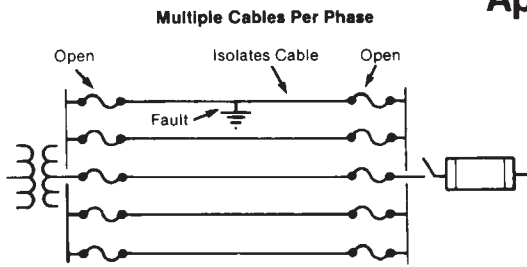
Cable Ratings: 250MCM to 750MCM Cu - 600Vac
2/0 or 3/0 Cu - 250Vac
4/0 Al - 250Vac (Cu/Al terminal required)

Interrupting Rating: 600V - 200,000 Amps RMS
250V - 100,000 Amps RMS

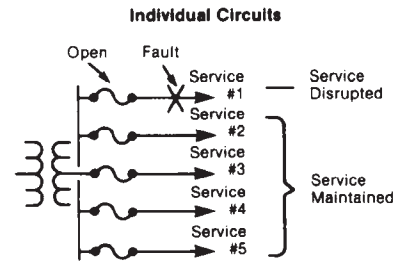
Current Limiting

Agency Approvals:
Self-certified to UL requirements.

Applications



The Cable Limiters isolate the faulted cable to prevent excessive damage and unscheduled power outage.



The Cable Limiter isolates the faulted service while service is maintained to others.

Application of Cable Limiters:

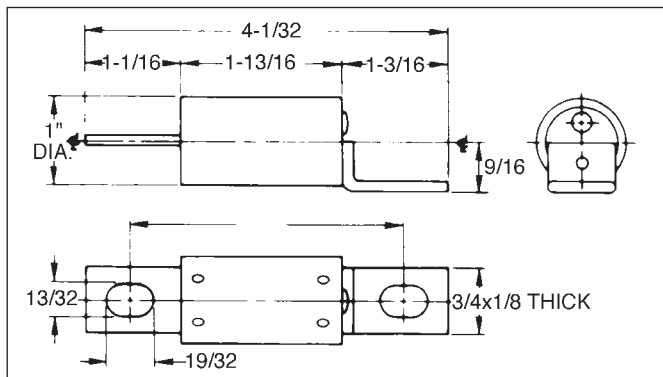
By industry definition, cable limiters do not provide overload protection. Class J and Class L fuses for three or more cables-per-phase applications should be considered if overload protection is a concern. This may also be a desirable consideration for aluminum cable using suitable connectors.

Cable limiters applied in utility networks and building power system main parallel service cables are primarily intended to isolate faults in multiple-cables-per-phase installations. This prevents total power outages until maintenance of faulted cable(s) can be scheduled. During the process of opening under fault conditions to isolate faulted cable(s), limiters current limiting action reduces potential for excess heat damage to unfaulted cables.

For applications having three or more parallel cables-per-phase, cable limiters are installed at each end of each cable. For nonparallel or multiple radial cables, limiters may successfully be applied at the source end of each cable for fault isolation.

When analyzing cable limiter potential applications, it is not unusual to forget that normal and abnormal current through cable limiters is divided just as it is between cables. Selectivity with upstream overcurrent protection devices is seldom of concern. When designing for cable limiter fault isolation to prevent a burn down or unscheduled blackout by one faulted cable, it is desirable to determine the continuous rating load (3 hours or more) that the remaining cables must handle without overheating.

Dimensions - inches Cable Limiters 250 Volts or Less AC

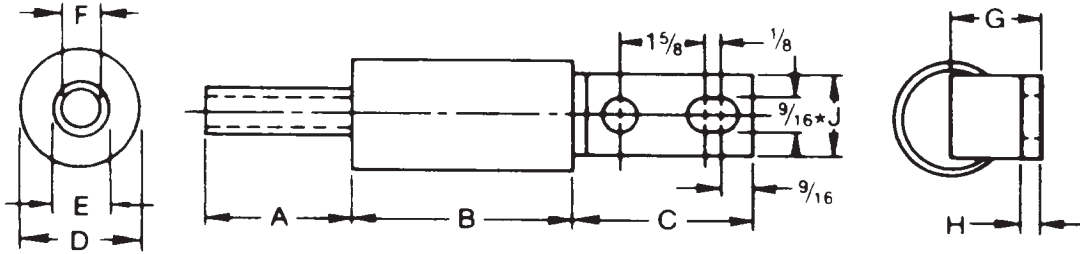


Cat. No. UCLA

Cable Limiters 600 Volts or Less AC

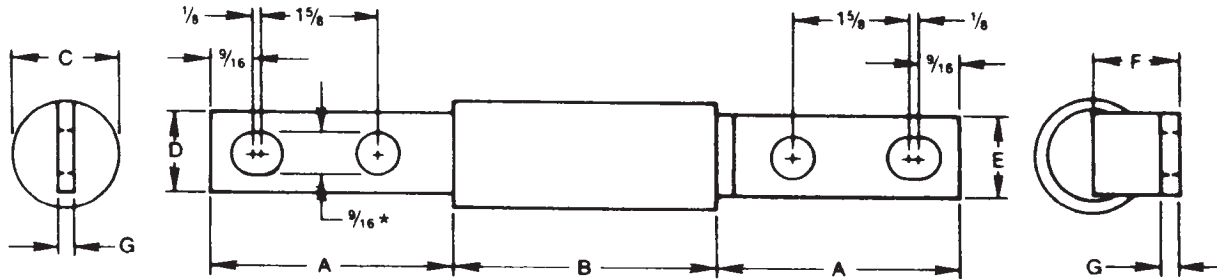
Dimensions are shown in inches.*

Tube-Offset Blade (TO)**



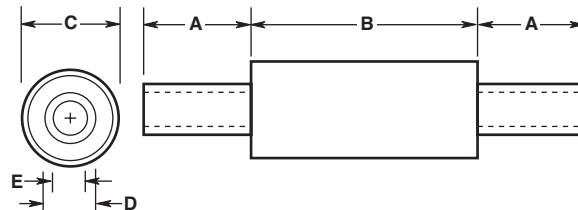
Catalog Number	Copper Cable Size*	A	B	C	D	E	F	G	H	J
UCL25TO	250 MCM	1-7/8	3-5/8	3-3/8	1-7/16	3/4	19/32	31/32	1/4	1-1/8
UCL35TO	350 MCM	2			1-5/8	7/8	45/64	1-1/16		
UCL50TO	500 MCM	2-7/8	1-7/8	1-1/16	53/64	1-3/16				
UCL75TO	750 MCM	3-1/2	3-3/4	3-1/2	2-1/2	1-5/16	1-1/16	1-1/2		2

Center Blade-Offset Blade (BO)**



Catalog Number	Copper Cable Size*	A	B	C	D	E	F	G
UCL25BO	250 MCM	3-3/8	3-5/8	1-7/16	1-1/8	1-1/8	31/32	1/4
UCL35BO	350 MCM			1-5/8			1-1/16	
UCL50BO	500 MCM	1-7/8	1-1/2	1-5/8	1-3/16			
UCL75BO	750 MCM	3-1/2	3-3/4	2-1/2	2	2	1-1/2	

Tube-Tube (TT)



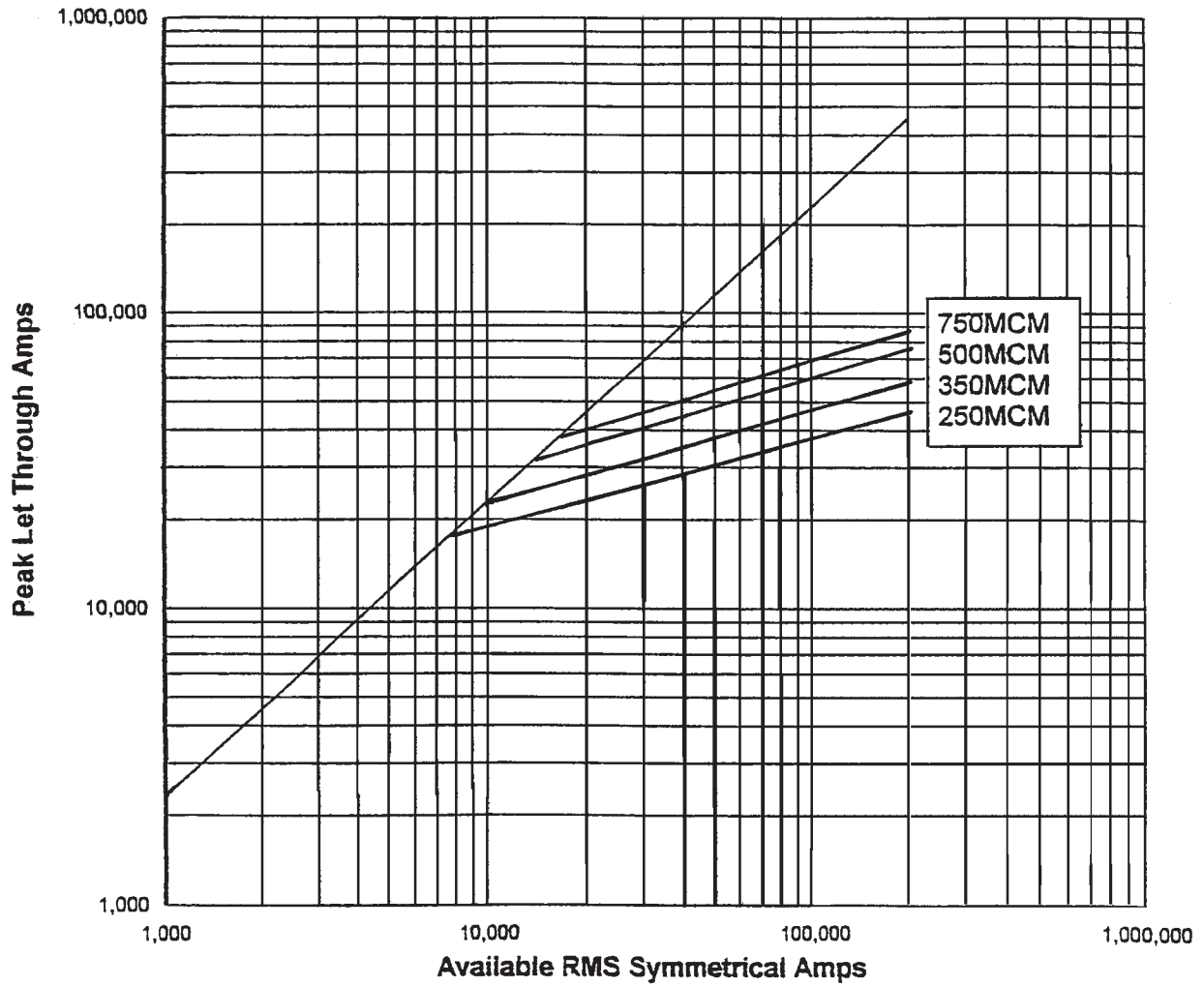
Catalog Number	Copper Cable Size*	A	B	C	D	E
UCL25TT	250 MCM	1-7/8	3-5/8	1-7/16	3/4	19/32
UCL35TT	350 MCM	2		1-5/8	7/8	45/64
UCL50TT	500 MCM	2-7/8	1-7/8	1-1/16	53/64	
UCL75TT	750 MCM	3-1/2	2-7/8	2-1/2	1-5/16	1-1/16

*Limiter terminals are silver plated copper.
**Dimensions of "TT", "OO", "TB", etc., terminals are determined by matching appropriate dimensions shown.

Average Time-Current Curve

Cat. No. UCL-(XXXX)-600Vac

Peak Let-Through Curve
Edison Copper Cable Limiters



UL/CSA Fuses
Current Limiting

UL/CSA Fuses
General Purpose

Special
Purpose Fuses

Canadian
Fuses & Holders

Medium
Voltage Fuses

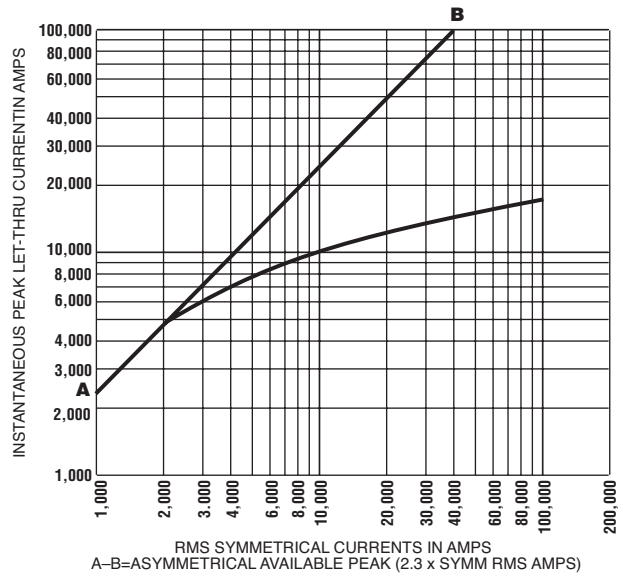
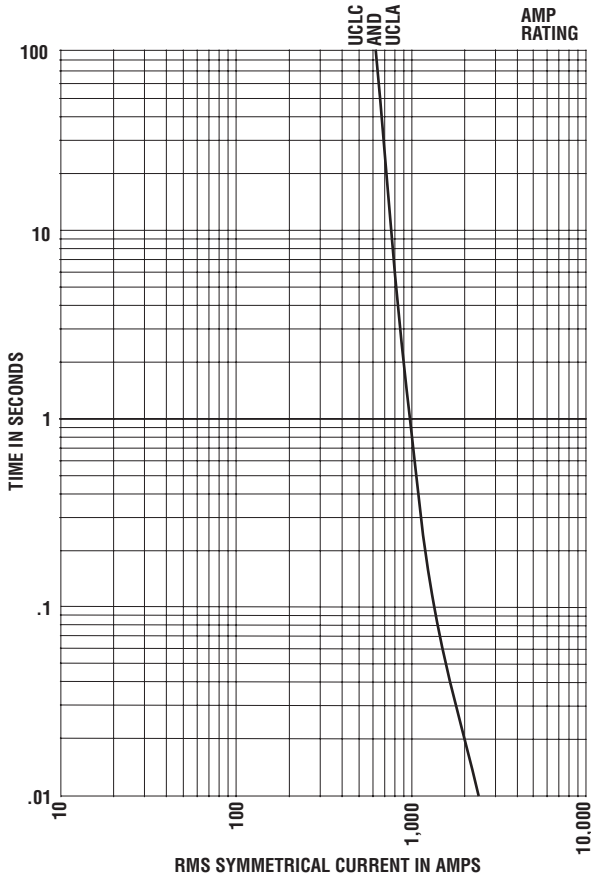
Fuse Blocks,
Holders & Misc.

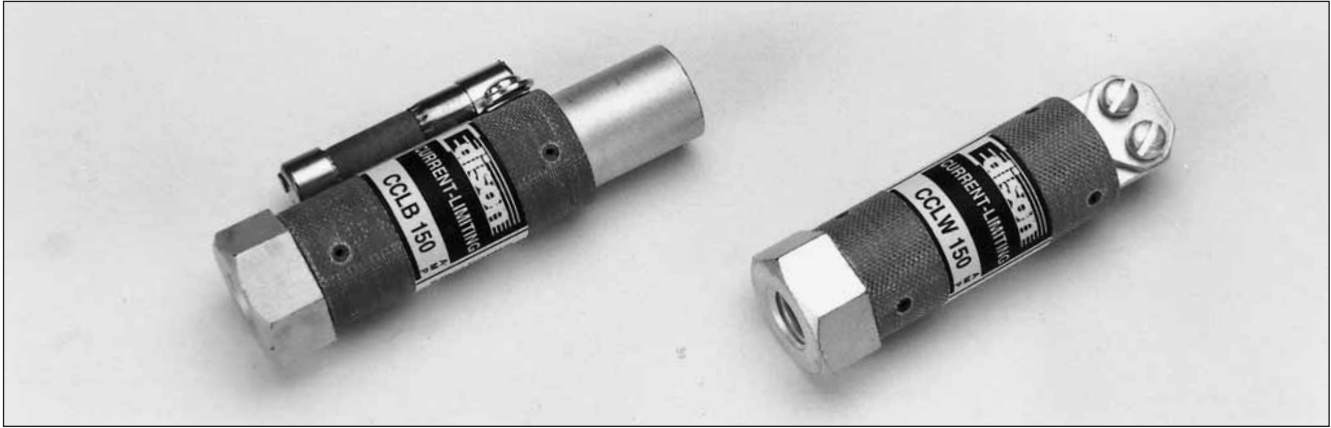
Application
Section

Average Time-Current Curve

Peak Let-Through Current Curve

Cat. No. UCLA and 250V





Cat. No. CCLB(Amps)

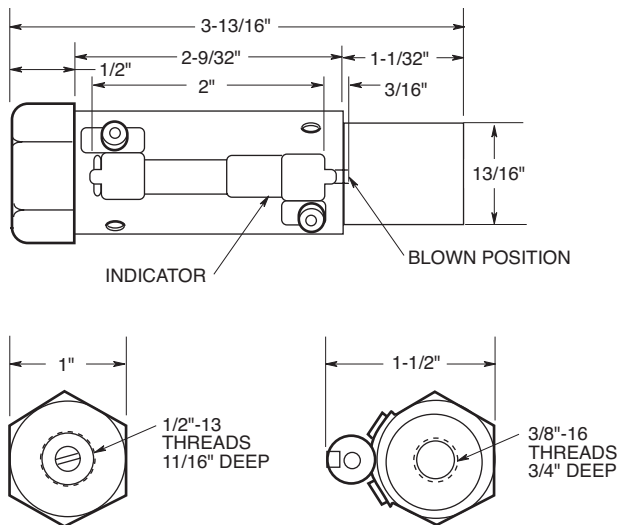
600Vac or Less
AC Interrupting Rating: 200kA
With open fuse indicator
UL Recognized (80 to 150 amps) E56412, JFHR2
Non-Time Delay

Amp Ratings CCLB	
80	150
100	200
125	250

Characteristics:

- Stud mount with tapped terminals
- Isolates faulted capacitor
- Size amp rating 150% to 175% of capacitor rated amps
- Maximum quality assurance

Dimensions - inches



Cat. No. CCLW(Amps)

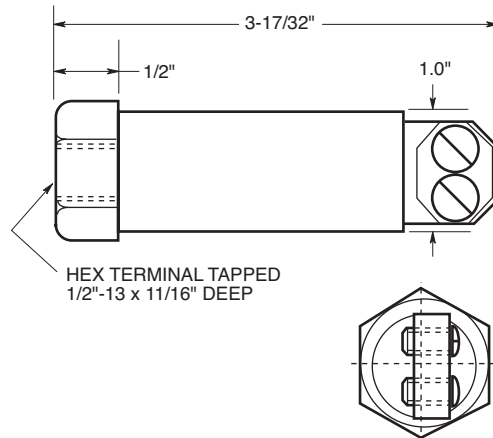
600Vac or Less
AC Interrupting Rating: 200,000 Amps
Without open fuse indicator
UL Recognized 80-150 Amps, (E56412, JFHR2)
Non-Time Delay

Amp Ratings CCLW	
50	150
80	—
100	—

Characteristics:

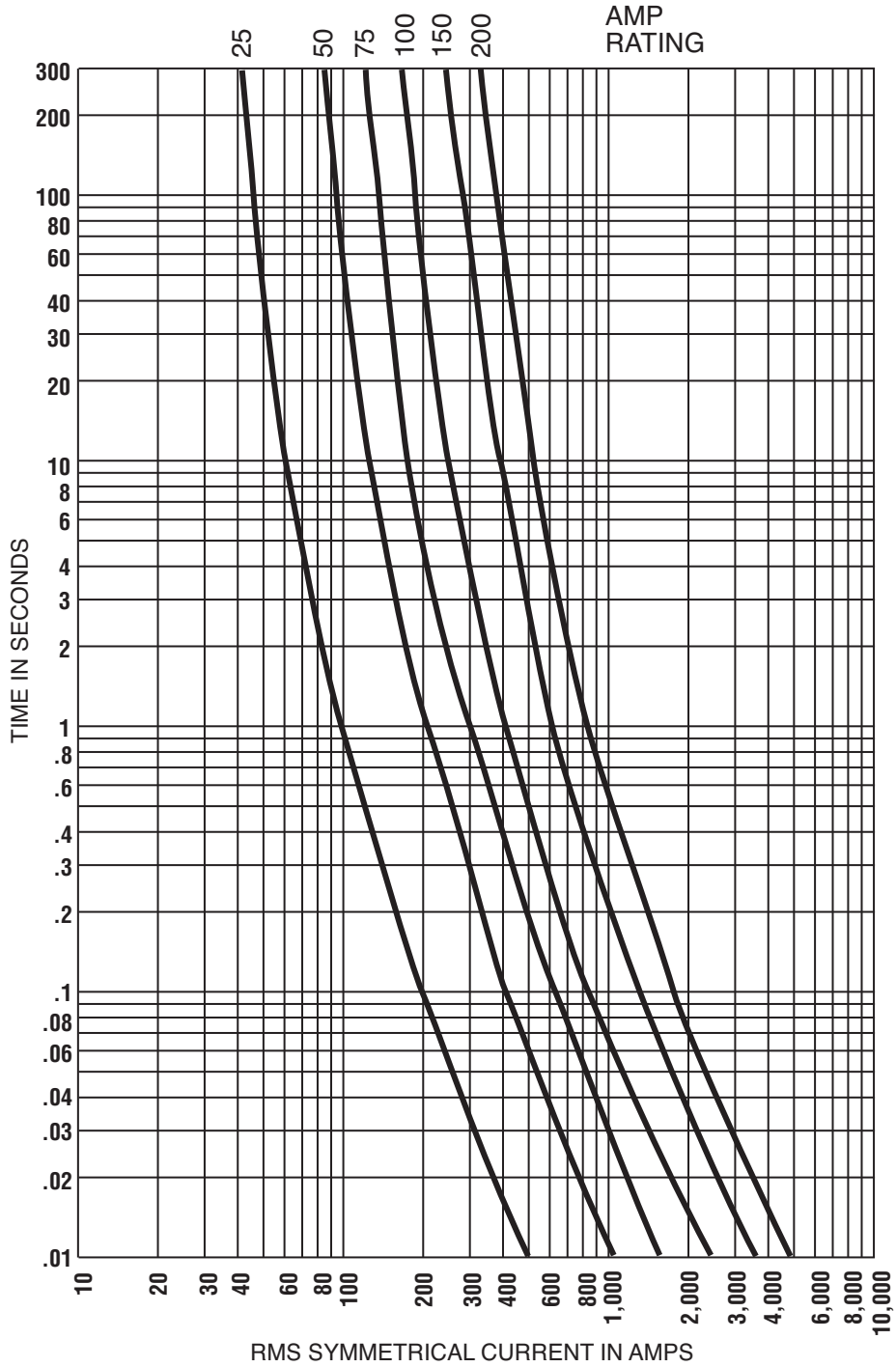
- Stud mount and pressure plate terminals
- Isolates faulted capacitor
- Size amp rating 150% to 175% of capacitor rated amps
- Maximum quality assurance

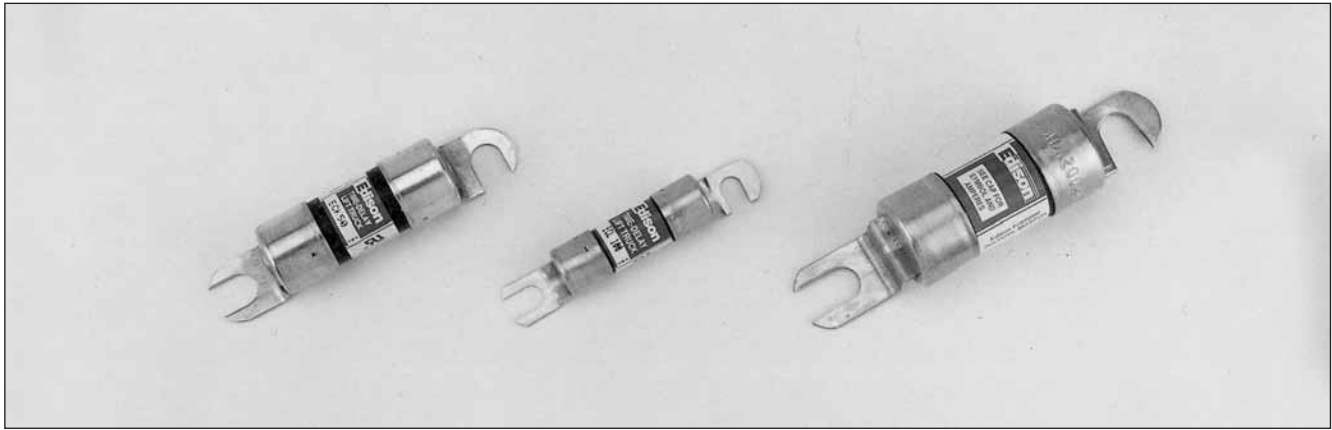
Dimensions - inches



Average Time-Current Curve

Cat. No. CCLB or CCLW (Amp)





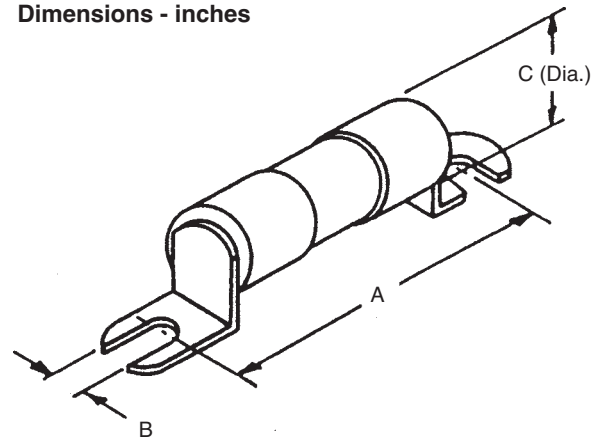
Catalog Number ACK (15 - 400A), ACL (30 - 100A) and ALS (100 - 500A)

Applications:

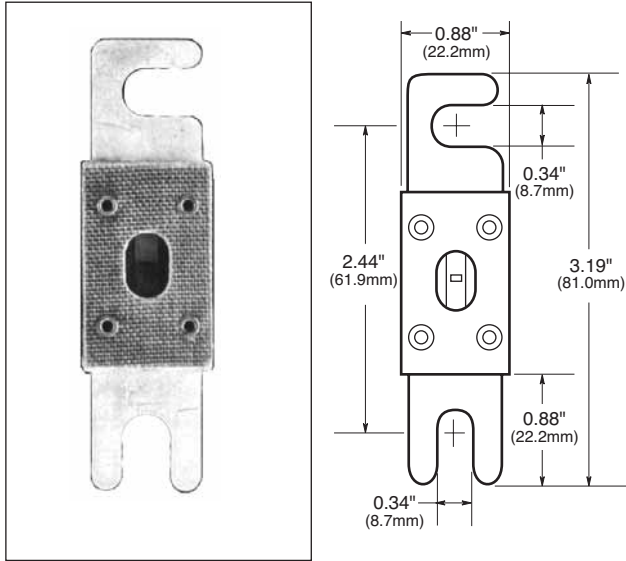
Popular for protection of DC circuits in fork lift trucks and battery chargers.

Catalog Number	Type	Volts	Amps	Dimensions (Inches)		
				A	B	C
ACK	Time-Delay	130Vdc	15, 20, 25, 30	2.500	0.250	0.563
			35, 40, 50, 60	3.000	0.344	0.813
			70, 75, 80, 100	3.500	0.313	1.063
		72Vdc	120, 140, 150, 175, 200	3.635	0.313	1.063
		48Vdc	225, 250, 300, 400	3.875	0.313	1.063
ACL	Time-Delay	72Vdc	30, 35, 40, 50, 60 80, 100	2.500	0.250	0.563
ALS	Non-Time Delay	130Vdc	100, 120, 140, 150, 175	3.750	0.375	1.063
		36Vdc	200, 225, 250, 300 350, 400, 450, 500			

Dimensions - inches



**Catalog Number ANL (35 - 500A)
125Vac or Less**



Amp Ratings		
ANL 125Vac		
35	130	350
40	150	325
50	175	350
60	200	400
80	225	500
100	250	—

ANL Specifications:
Non-Time-Delay

Voltage Rating: 80Vdc, 125Vac

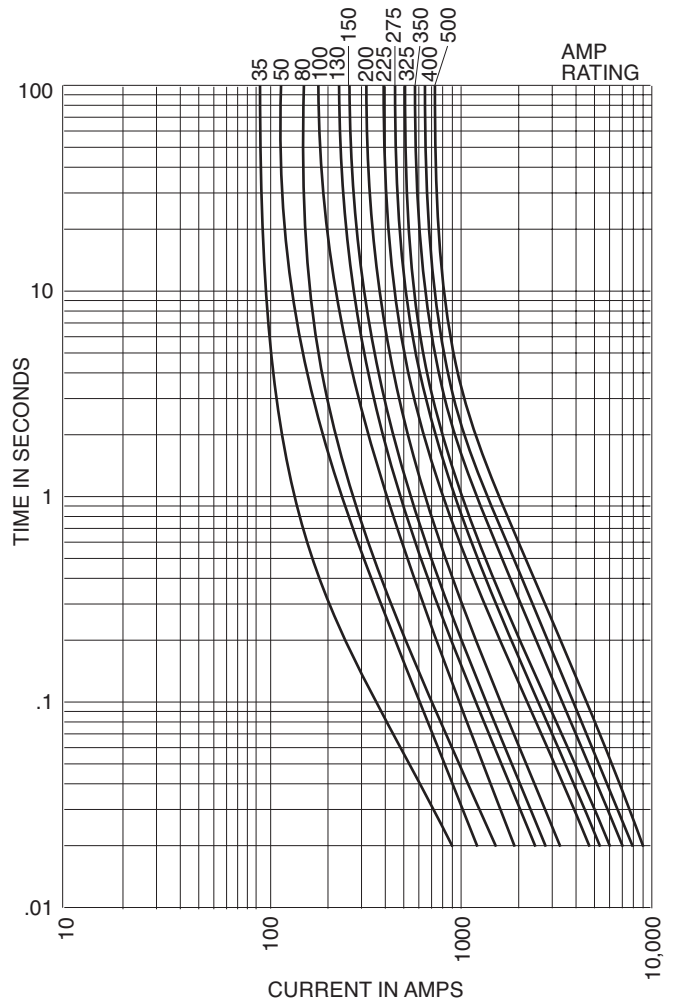
Interrupting Rating: 6,000 Amps

Recommended Fuse Block: 4164

Characteristics:

- Isolates faults in equipment systems such as lift trucks and other battery operated systems.
- Silver-plated copper links.
- Link element visible through mica window.

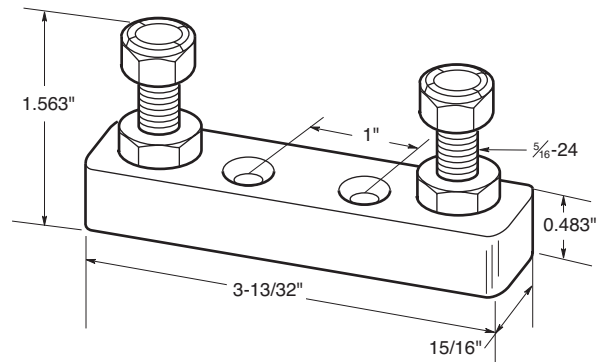
Average Time-Current Curve



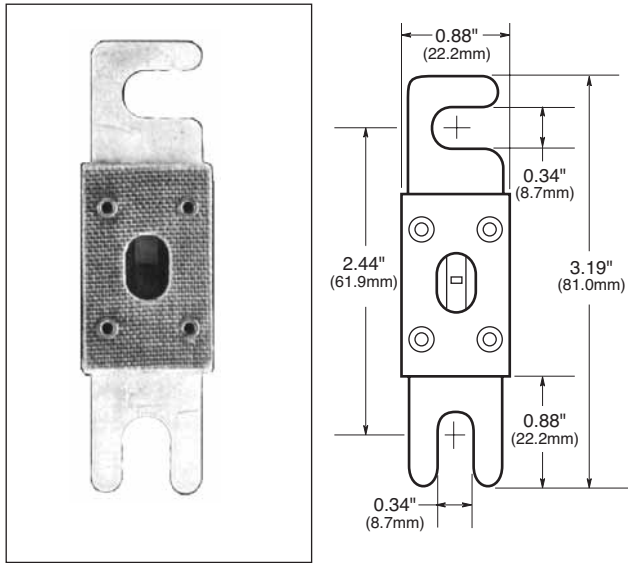
Fuse Block 4164

Holes drilled 0.217" diameter with 0.438" counterbore with 5/16-24 stud.

Dimensions - inches



**Catalog Number ANN (35 - 800A)
125 Volts AC or Less**



Amp Ratings ANN 125Vac		
35	125	350
40	150	400
50	175	500
60	200	600
80	275	800
90	300	—
100	325	—

ANN Specifications:
Very Fast-Acting

Voltage Rating: 80Vdc, 125Vac

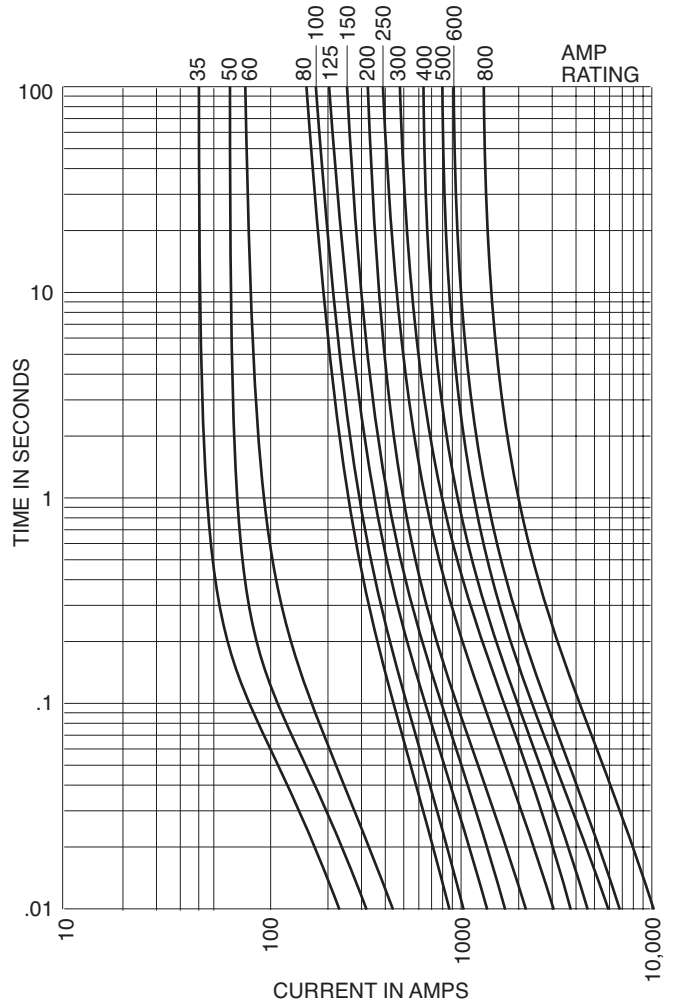
Interrupting Rating: 2,500 Amps

Recommended Fuse Block: 4164

Characteristics:

- Very fast-acting (high speed of response to short-circuit currents).
- Link element visible through mica window.
- UL Recognized 35-400A (Guide #JFHR2, File #E56412)

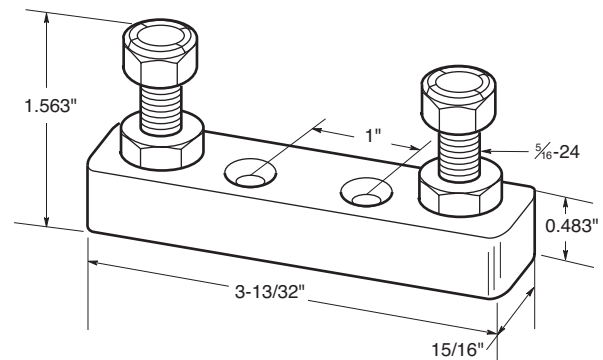
Average Time-Current Curve



Fuse Block 4164

Holes drilled 0.217" diameter with 0.438" counterbore with 5/16-24 stud.

Dimensions - inches





Standard Ratings

Voltages	Catalog Number	Amp Ratings	UL Component Recognition			
			Vac	AC AIR	Vdc	DC AIR
130V	E13S (Amp)	1000 – 3000	130	200,000	130	
150V	E15SF(Amp)	5 – 60	150	200,000	150	
	E15S(Amp)	70 – 1000				
250V	E25SFX(Amp)	5 – 30	250	200,000	250	10,000
	E25S(Amp)	35 – 800				
	E25S(Amp)	1000 – 2500				
500V	E50SF(Amp)	5 – 30	500	200,000	500	10,000
	E50S(Amp)	35 – 1600				
	E50S(Amp)	900-1200				
600V	E60C(Amp)	0 - 20	600	10,000		
		25 - 600				
		700 – 1000				
600V	E60SF(Amp)	5 – 30	600	200,000		
		E60S(Amp)				
700V	E70SF(Amp)	5 – 30	700	200,000	700	10,000
	E70S(Amp)	35 – 800				
	E70S(Amp)	1000 – 1200				
1000V	E100SF(Amp)	20 – 30	1000	200,000	800	
	E100S(Amp)	40 – 500				
	E100S(Amp)	600 – 800				

Technical Data

In many cases, the data in this catalog section which includes available ratings, dimensions, time current characteristics and I²t let-through, will enable a suitable choice of fuse to be made. The following notes are a guide to assist fuse selection.

Voltage Rating

The test voltage is equal to the rated voltage. The DC voltage ratings are tested with a time constant of 10ms. For longer time constants the following typical derating factors apply:

Time constant ms	25	40	60
Voltage derating factor	0.85	0.7	0.6

Current Rating

The maximum current carrying capability is at least equal to the current rating, provided that the ambient temperature is less than 30°C, conductor sizes are at least 1mm² per amp, and there is natural convection cooling.

For ambient temperatures higher than 30°C, a derating of 0.5% per °C is recommended. In situations where the air temperature surrounding the fuse is higher than the ambient temperature, i.e. inside a converter cubicle, the derating should be based on the air temperature surrounding the fuses.

In many installations, power semiconductors are force cooled in an air stream. Fuses can be mounted in this air stream and their maximum current carrying capability can then be increased. This increase is up to approximately 20% in an air velocity of 5m/s but higher velocities do not produce any substantial increase in rating.

Power Dissipation

The values of watts loss given are related to full rated current with the correct sizes of conductors and natural cooling.

Time Current Characteristics

Individual time current characteristics are subject to a $\pm 10\%$ tolerance on current and are based on symmetrical sinusoidal 60Hz currents. High speed fuses are designed to clear fault currents associated with pre-arcing times of 30 seconds or less. Dashed lines on time-current characteristic curves represent overload conditions which, should always be avoided.

Permitted Overloads

In many applications, surges occur during the normal duty of equipment and under such permitted overloads, the fuse must not open.

For permitted overloads lasting longer than a few minutes, the fuse current rating should be selected based on the overload current. The current rating of the fuse should exceed the overload current.

For infrequent normal overloads, fuse selection can be made on the basis of an overload curve of not more than 75% of the published time current characteristic.

For highly repetitive overloads, such as in a steel mill thyristor drive, fuse selection should be made on the basis of an overload curve of not more than 60% of the published time current characteristic.

I^2t Characteristics

The melting I^2t of fuses is independent of voltage and reduces to a minimum value for times less than about 1ms. For longer times, reference should be made to the time current characteristics.

The total I^2t values for operating times less than one half-cycle are shown in the data sheets and relate to a fault current of at least 20x rated current, I_n , with a power factor of 15%.

The total I^2t values reduce considerably at voltages below the rated voltage since the arc interruption is easier.

Breaking Capacity

In general, high speed fuses perform well at very high fault currents and many products have been successfully tested up to 200kA rms symmetrical. The fuses are essentially for short-circuit protection and therefore in general, only required to clear faults for melting times less than 30 seconds.

Peak Let-Through Current Curves

Short-circuit coordination of power semiconductors is assessed with the use of I^2t values. Traditional supplementary peak let-through current curves are also shown in the catalog.

Arc-Voltage Characteristics

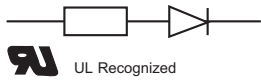
Applications using modern power semiconductors are not normally sensitive to the peak arc voltages produced by Edison high speed fuses.

Typical values of arc voltages in relation to the rated fuse voltage, U_n , are:

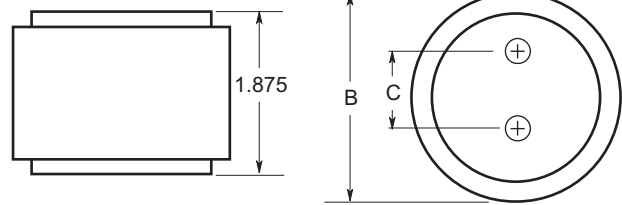
System Voltage	Arc Voltage of Fuse
U_n	$2.0 U_n$
$0.5 U_n$	$1.25 U_n$
$0.2 U_n$	$0.7 U_n$

Example: a 500 volt Edison high speed fuse used on a 250 volt system would produce an arc voltage of approximately 625 volts.

Catalog Number E13S(Amp) 130Vac/130Vdc



Dimensions - inches



E13S(Amp) Dimensions - inches				
Catalog Numbers	Figure	B	C	Threat Depth
E13S1000HP-2000	1	2.0	1.0	Tapped 3/8" - 24 x 1/2"
E13S2500-3000	1	3.0	1.5	Tapped 1/2" - 20 x 1/2"

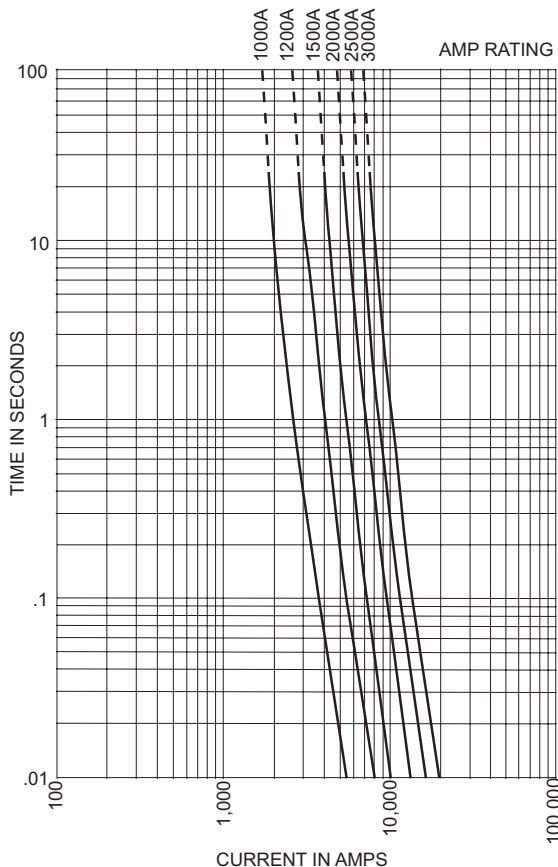
Figure 1: 1000 – 3000 Amp Range

E13S(Amp) Electrical Characteristics				
Catalog Numbers	Rated Current RMS Amps	Melting I ² t	Clearing I ² t @ 130V	Watts Loss @ Rated Current
E13S1000HP	1000	170,000	460,000	60
E13S1200	1200	270,000	730,000	70
E13S1500	1500	520,000	1,400,000	78
E13S2000	2000	860,000	2,400,000	108
E13S2500	2500	1,500,000	4,100,000	130
E13S3000	3000	2,100,000	5,700,000	150

NOTE: To cross reference 130V high speed fuses below 1000 amps, refer to upgraded Edison E15S(Amp) – 150V fuses.

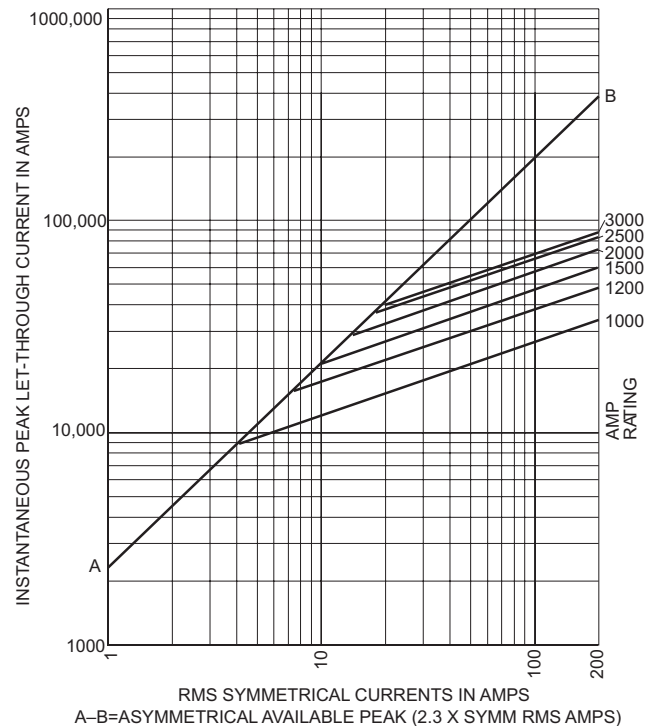
Minimum Melting Curves

E13S1000 – 3000, 130V

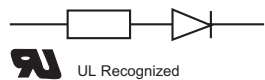


Peak Let-Through Current Curves

E13S1000 – 3000, 130V



Catalog Number E15SF5 – 60



E15SF(Amp) Dimensions - inches (mm)				
Catalog Numbers	Figure	A	B	C
E15SF5 – 30	1	1.500 (38.1)	0.375 (9.5)	0.406 (10.3)
E15SF35 – 60	1	2.000 (50.8)	0.625 (15.9)	0.812 (20.6)

Dimensions - in (mm)

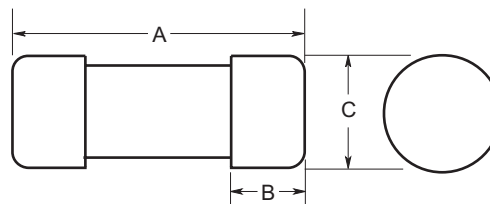


Figure 1: 5 – 60 Amp Range

Catalog Number E15S70 – 1000

E15S(Amp) Dimensions - inches (mm)									
Catalog Numbers	Figure	A	B	C	D	E	F	G	H
E15S70 – 400	2	2.656 (67.5)	2.062 (52.4)	1.156 (29.4)	1.000 (25.4)	0.125 (3.2)	0.750 (19.1)	0.312 (7.9)	0.438 (11.1)
E15S500 – 1000	3	3.500 (88.9)	2.438 (61.9)	1.250 (31.8)	1.500 (38.1)	0.250 (6.4)	1.000 (25.4)	0.406 (10.3)	0.406 (10.3)

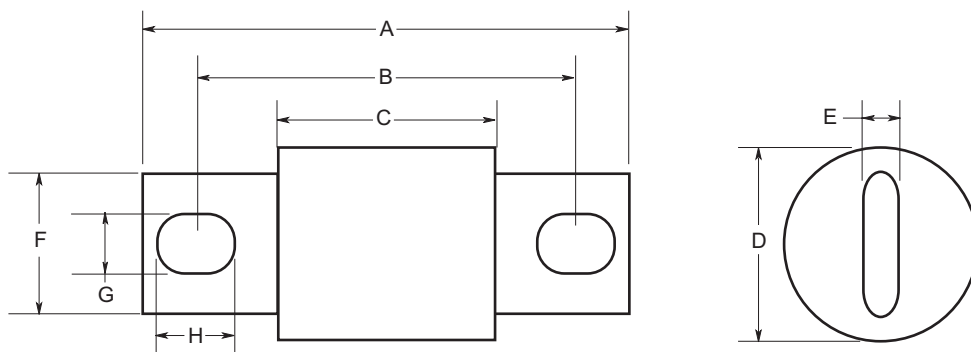


Figure 2: 70 – 400 Amp Range

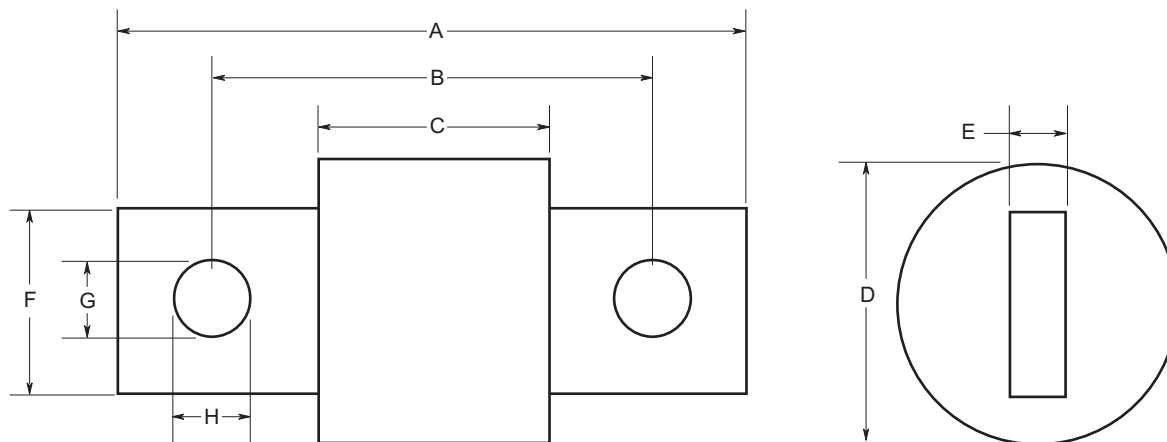


Figure 3: 500 – 1000 Amp Range

Catalog Number E15SF(Amp) 150Vac/130Vdc

E15SF(Amp) 150Vac/130Vdc Electrical Characteristics				
Catalog Number	Rated Current RMS Amps	Melting I ² t	Clearing I ² t @ 150V	Watts Loss @ Rated Current
E15SF5	5	1.6	8	1.1
E15SF10	10	3.6	16	2.7
E15SF15	15	14.5	55	3.3
E15SF20	20	33.0	130	3.8
E15SF25	25	58.0	220	4.5
E15SF30	30	100.0	400	4.9
E15SF35	35	75.0	800	4.5
E15SF40	40	102.0	1000	5.1
E15SF45	45	133.0	1300	6.0
E15SF50	50	168.0	1600	7.3
E15SF60	60	250.0	2400	8.0

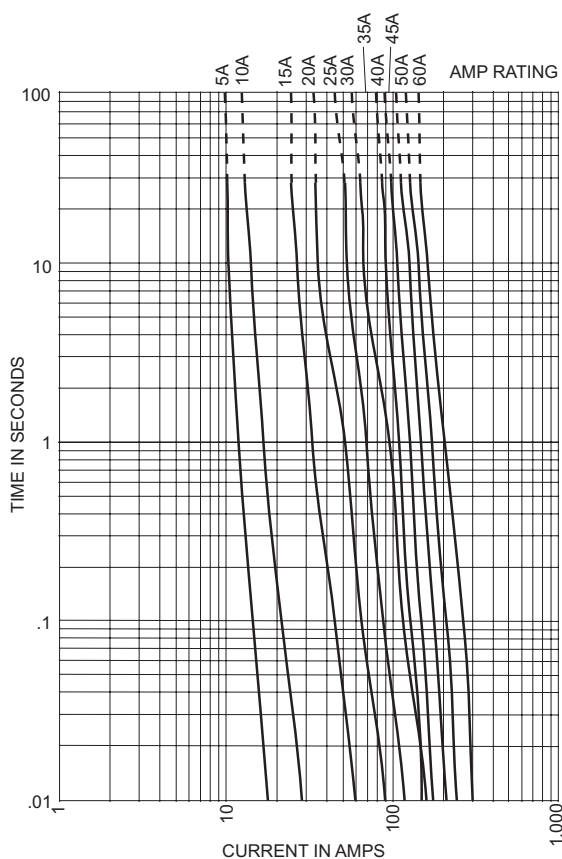
Catalog Number E15S(Amp) 150Vac/150Vdc*

E15S(Amp) 150Vac/150Vdc Electrical Characteristics				
Catalog Number	Rated Current RMS Amps	Melting I ² t	Clearing I ² t @ 150V	Watts Loss @ Rated Current
E15S70	70	467	4000	6.9
E15S80	80	670	6000	7.7
E15S100	100	1200	12000	9.0
E15S125	125	1870	18000	11.2
E15S150	150	2700	26000	13.5
E15S200	200	4780	45000	17.6
E15S250	250	7470	70000	22.5
E15S300	300	10760	100000	27.0
E15S350	350	15700	140000	30.6
E15S400	400	20340	180000	35.2
E15S500	500	39000	120000	35.0
E15S600	600	46000	140000	47.0
E15S700	700	75000	220000	49.0
E15S800	800	92000	280000	58.0
E15S1000	1000	170000	510000	60.0

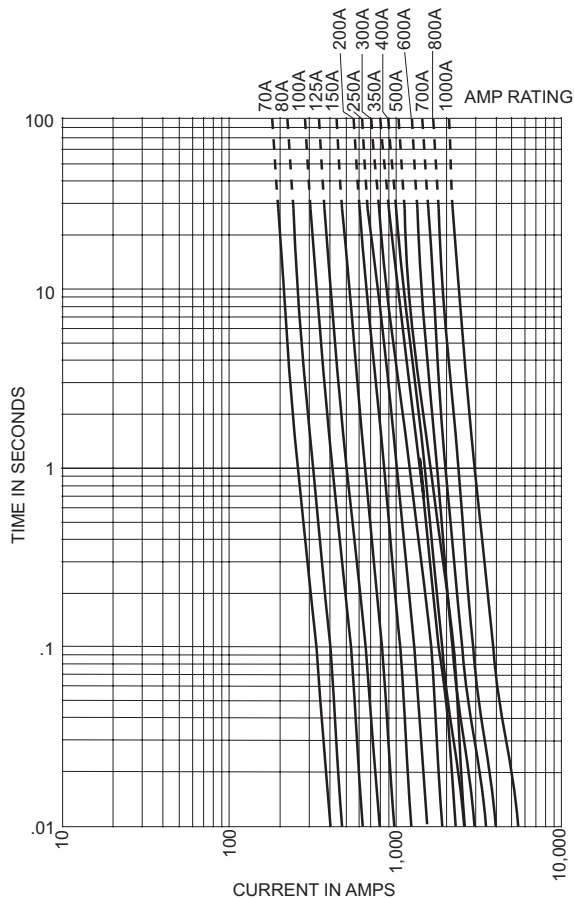
Interrupting Rating 200kA RMS Symmetrical.
 *150Vdc rating applies to 70 – 800 amps only.

Time-Current, Minimum Melting Curves

E15SF(Amp) High Speed Fuse
5 – 60 Amps, 150 Volts

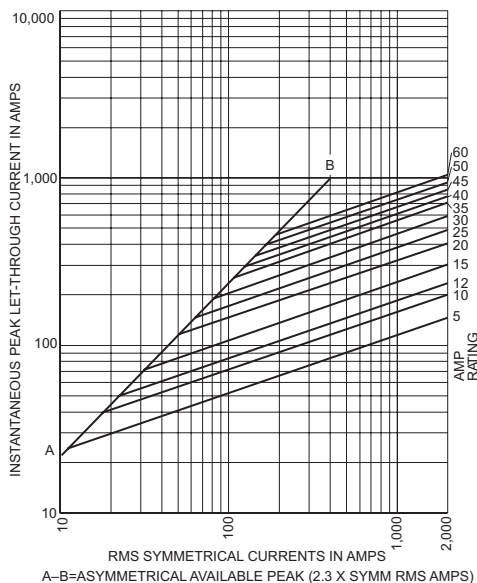


E15S(Amp) High Speed Fuse
70 – 1000 Amps, 150 Volts

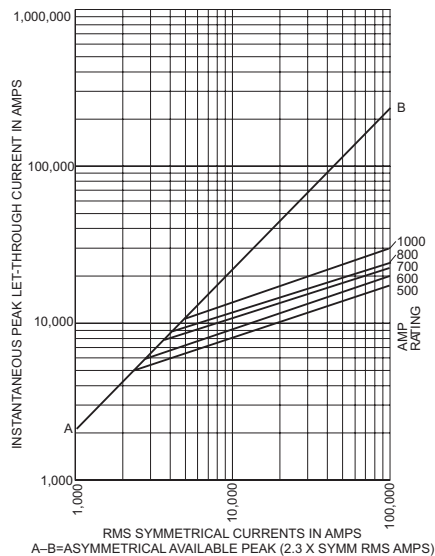


Peak Let-Through Current Curves

E15SF(Amp) High Speed Fuse
5 – 60 Amps, 150 Volts

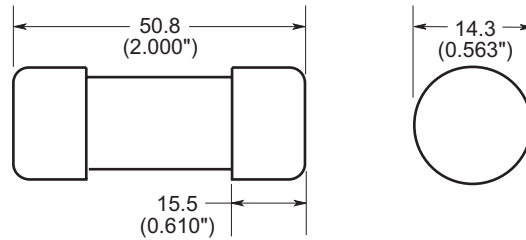


E15S(Amp) High Speed Fuse
70 – 1000 Amps, 150 Volts



Catalog Number E25SFX(Amp) 5 – 30 Amps, 250Vac/250Vdc

Dimensions - inches (mm)



Catalog Number E25S(Amp) 35 – 2500 Amps

E25S(Amp) Dimensions - inches (mm)										
Catalog Numbers	Figure	A	B	C	D	E	F	G	H	J
E25S35 – 60	1	3.19 (81.0)	0.81 (20.6)	1.59 (40.4)	2.59 (65.8)	2.25 (57.2)	0.34 (8.6)	0.63 (16.0)	0.13 (3.3)	0.52 (13.2)
E25S70 – 200	1	3.13 (79.5)	1.22 (31.0)	1.59 (40.4)	2.44 (62.0)	2.19 (55.6)	0.34 (8.6)	1.00 (25.4)	0.19 (4.8)	0.47 (11.9)
E25S225 – 600	1	3.84 (97.5)	1.50 (38.1)	1.59 (40.4)	2.94 (74.7)	2.25 (57.2)	0.41 (10.4)	1.00 (25.4)	0.25 (6.4)	0.75 (19.1)
E25S700 – 800	1	3.84 (97.5)	2.00 (50.8)	1.59 (40.4)	3.03 (77.0)	2.28 (57.9)	0.41 (10.4)	1.50 (38.1)	0.25 (6.4)	0.78 (19.8)
E25S1000 – 1200	2	2.59 (65.8)	3.00 (76.2)	1.50 (38.1)	—	—	—	—	—	—
E25S1500 – 2500	3	2.59 (65.8)	3.50 (88.9)	1.50 (38.1)	1.50 (38.1)	—	—	—	—	—

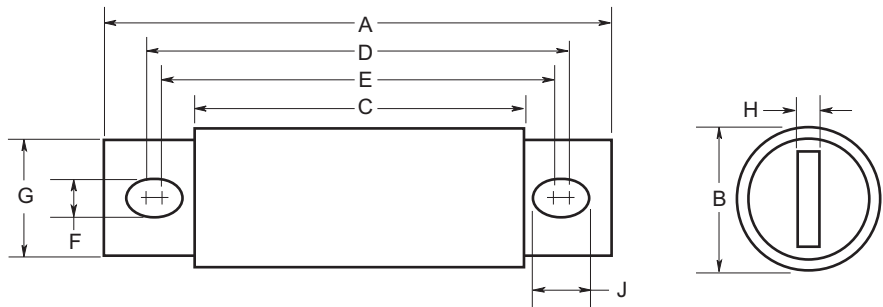


Figure 1: 35 – 800 Amp Range

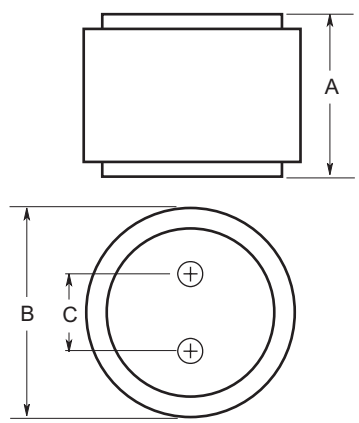


Figure 2: 1000 – 1200 Amp Range

Thread Depth
Tapped 3/16" -24 x 1/2"

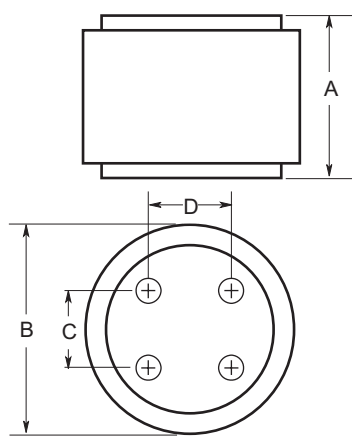
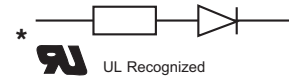


Figure 3: 1500 – 2500 Amp Range

Catalog Number E25S(Amp) 250Vac/250Vdc*

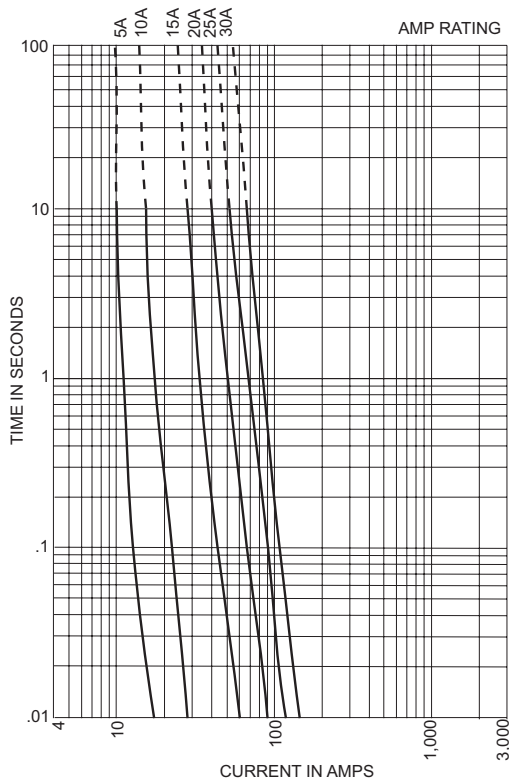


E25S(Amp) 250Vac/250Vdc* Electrical Characteristics				
Catalog Numbers	Rated Current RMS Amps	Melting I ² t	Clearing I ² t @ 250V	Watts Loss @ Rated Current
E25SFX5	5	1.6	15	1.3
E25SFX10	10	3.6	24	3.4
E25SFX15	15	14.5	83	3.8
E25SFX20	20	33.0	190	4.6
E25SFX25	25	58.0	290	5.3
E25SFX30	30	100.0	520	5.6
E25S35	35	50.0	230	4.2
E25S40	40	60.0	310	5.2
E25S45	45	80.0	390	5.7
E25S50	50	100	520	6.0
E25S60	60	140	740	8.1
E25S70	70	330	1400	7.2
E25S80	80	430	1850	8.1
E25S90	90	570	2450	9.0
E25S100	100	740	3150	10.0
E25S125	125	1130	4850	12.5
E25S150	150	1620	6950	15.7
E25S175	175	2170	9300	18.5
E25S200	200	2790	12000	22.0
E25S225	225	3210	14700	24.0
E25S250	250	3960	18100	27.0
E25S275	275	4720	21600	31.0
E25S300	300	6000	27300	32.0
E25S350	350	10600	48600	39.0
E25S400	400	14500	66100	44.0
E25S450	450	22100	101000	49.0
E25S500	500	28000	128000	54.0
E25S600	600	41100	188000	62.0
E25S700	700	48800	190000	72.0
E25S800	800	59000	230000	84.0
E25S1000	1000	44000	360000	100.0
E25S1200	1200	92000	750000	103.0
E25S1500	1500	120000	880000	140.0
E25S1600	1600	160000	1200000	140.0
E25S2000	2000	320000	2300000	151.0
E25S2500	2500	670000	4700000	163.0

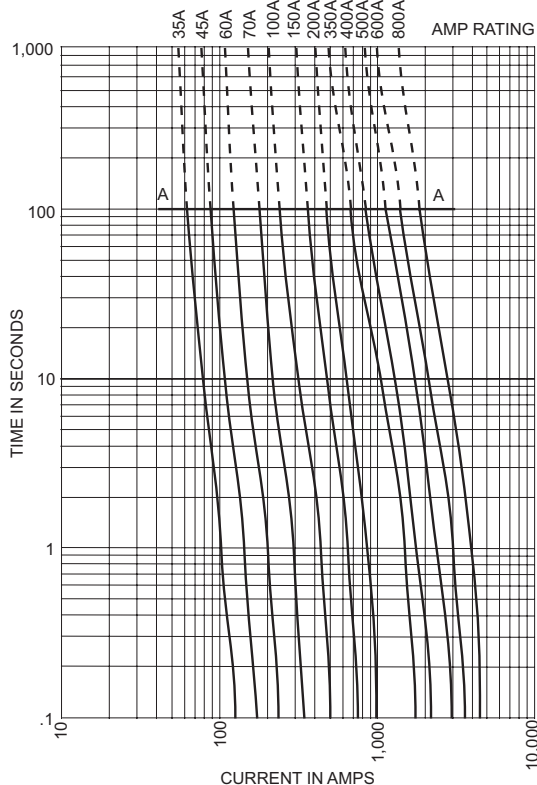
Interrupting Rating 200kA RMS Symmetrical.
*250Vdc rating and UL Recognition on 5 – 800 amps only.

Time-Current, Minimum Melting Curves

E25SFX(Amp) High Speed Fuse
5 – 30 Amps, 250 Volts

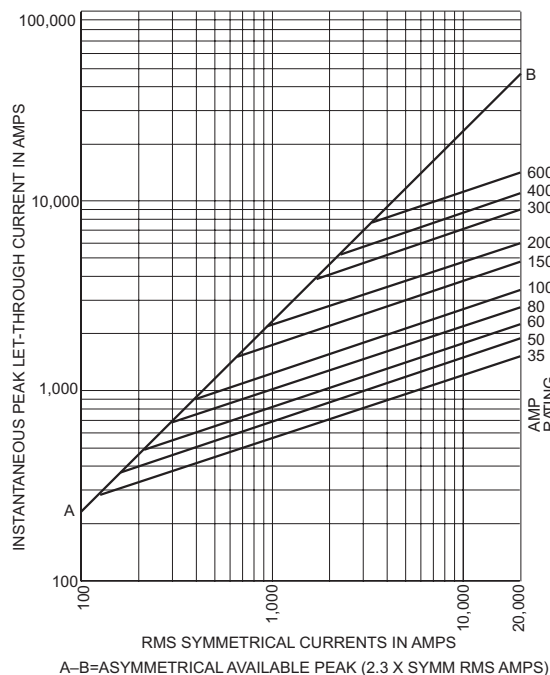


E25S(Amp) High Speed Fuse
35 – 800 Amps, 250 Volts

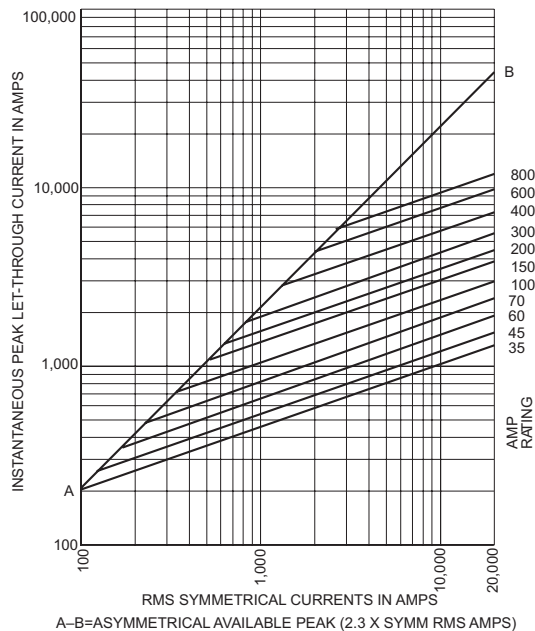


Peak Let-Through Current Curves

E25SFX(Amp) High Speed Fuse
5 – 30 Amps, 250 Volts

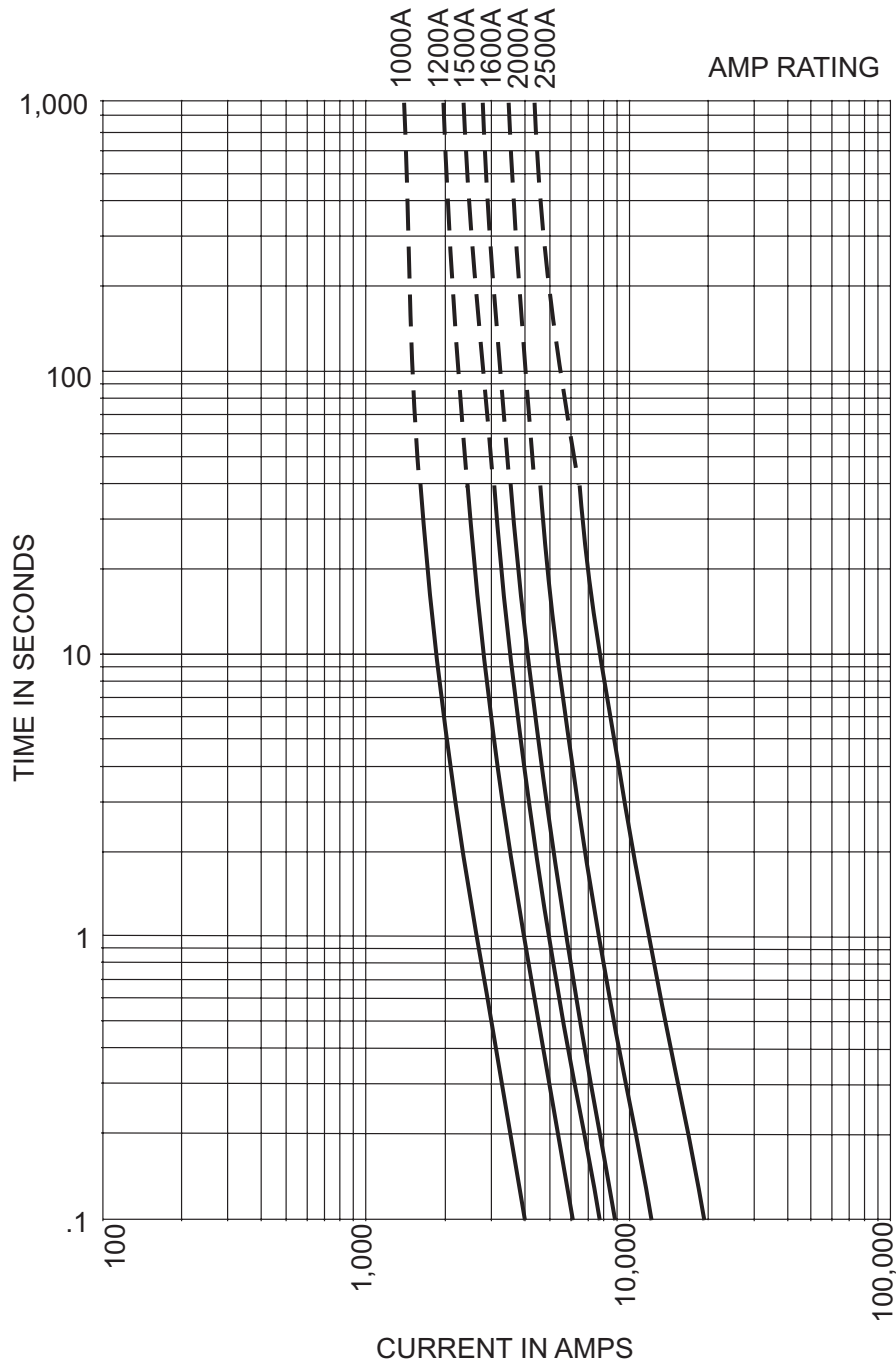


E25S(Amp) High Speed Fuse
35 – 800 Amps, 250 Volts



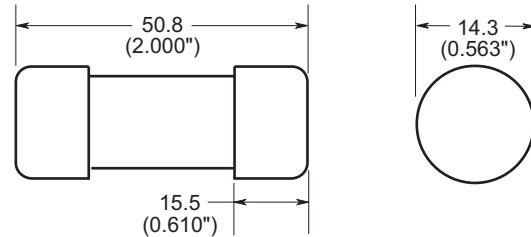
Time-Current, Minimum Melting Curves

E25S(Amp) High Speed Fuse 1000 – 2500 Amps, 250 Volts



Catalog Number E50SF(Amp) 5 – 30 Amps , 500Vac/500Vdc

Dimensions - inches (mm)



Catalog Number E50S(Amp) 35 – 1600 Amps , 500Vac/500Vdc*

E50S(Amp) Dimensions - inches (mm)										
Catalog Numbers	Figure	A	B	C	D	E	F	G	H	J
E50S35 – 60	1	3.19 (81.0)	0.81 (20.6)	1.59 (40.4)	2.59 (65.8)	2.25 (57.2)	0.34 (8.6)	0.63 (16.0)	0.13 (3.3)	0.52 (13.2)
E50S70 – 100	1	3.63 (92.2)	1.00 (25.4)	2.09 (53.1)	3.03 (77.0)	2.69 (68.3)	0.34 (8.6)	0.75 (19.1)	0.13 (3.3)	0.52 (13.2)
E50S125 – 200	1	3.63 (92.2)	1.22 (31.0)	2.09 (53.1)	2.94 (74.7)	2.69 (68.3)	0.34 (8.6)	1.00 (25.4)	0.19 (4.8)	0.47 (11.9)
E50S225 – 400	1	4.34 (110.0)	1.50 (38.1)	2.09 (53.1)	3.44 (87.4)	2.75 (69.9)	0.41 (10.4)	1.00 (25.4)	0.25 (6.4)	0.75 (19.1)
E50S450 – 600	1	4.34 (110.0)	2.00 (50.8)	2.09 (53.1)	3.53 (89.7)	2.78 (70.6)	0.41 (10.4)	1.50 (38.1)	0.25 (6.4)	0.78 (19.8)
E50S700 – 800	1	6.34 (161.0)	2.50 (63.5)	2.09 (53.1)	4.97 (126.2)	3.44 (87.4)	0.53 (13.5)	2.00 (50.8)	0.38 (9.7)	1.30 (33.0)
E50S1000 – 1200	1	6.97 (177.0)	3.00 (76.2)	3.22 (81.8)	5.47 (138.8)	4.48 (113.7)	0.63 (15.9)	2.38 (60.3)	0.44 (11.1)	1.12 (28.4)
E50S1400 – 1600	2				See Drawing					

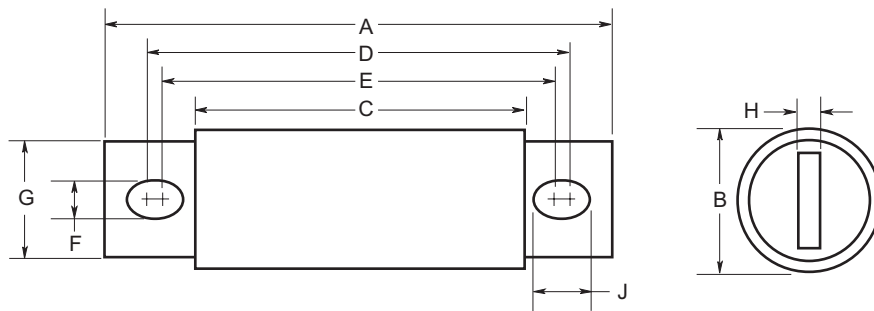


Figure 1: 35 – 1200 Amp Range

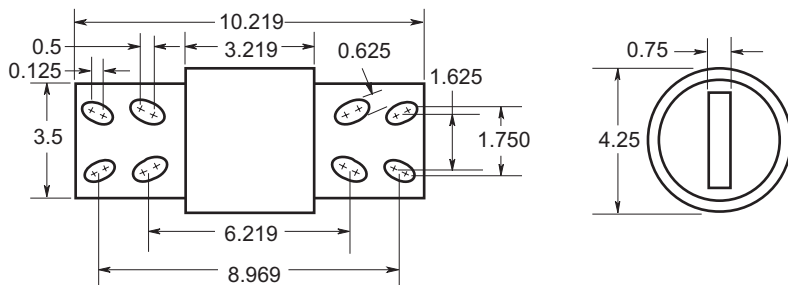
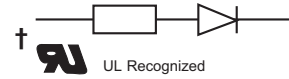


Figure 2: 1400 – 1600 Amp Range

Catalog Number E50S(Amp) 500Vac/500Vdc*

E50S(Amp) 500Vac/500Vdc Electrical Characteristics

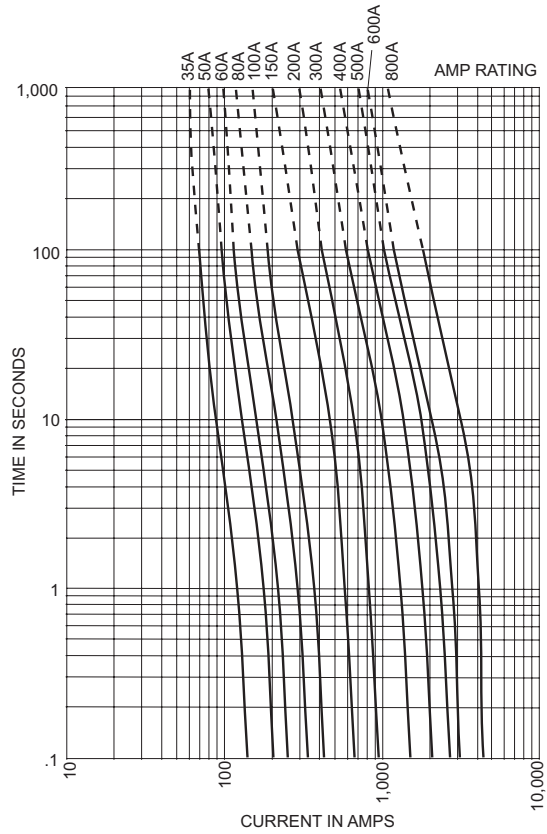
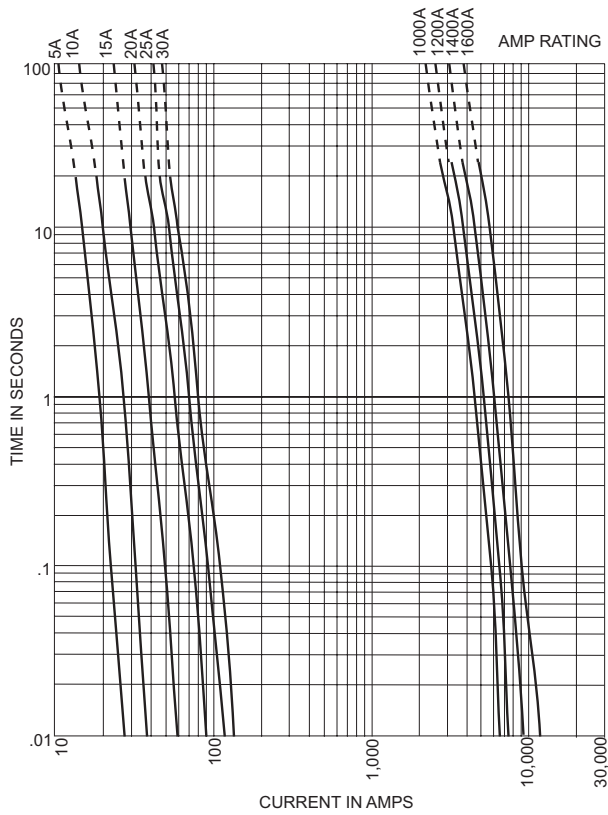
Catalog Numbers	Rated Current RMS Amps	Melting I ^t	Clearing I ^t @ 500V	Watts Loss @ Rated Current
E50SF5	5	1.6	2.5	1.5
E50SF10	10	3.6	6.0	4.0
E50SF15	15	10.0	16	5.5
E50SF20	20	26.0	40	6.0
E50SF25	25	49.0	75	7.0
E50SF30	30	58.0	90	9.0
E50S35	35	130	920	5.5
E50S40	40	180	1250	6.9
E50S50	50	280	1930	8.0
E50S60	60	410	2700	9.4
E50S70	70	290	1860	12.7
E50S80	80	430	2740	13.4
E50S90	90	590	3800	15.6
E50S100	100	730	4700	16.8
E50S125	125	1100	5950	24.0
E50S150	150	2000	10800	26.0
E50S175	175	2800	15300	30.0
E50S200	200	3900	21000	32.0
E50S225	225	4600	23300	39.0
E50S250	250	6300	32200	41.0
E50S275	275	7900	40300	46.0
E50S300	300	9800	49800	51.0
E50S325	325	13700	63800	53.0
E50S350	350	14500	72900	58.0
E50S400	400	19200	96700	65.0
E50S450	450	24700	127000	74.0
E50S500	500	29200	149000	84.0
E50S600	600	41300	206000	108.0
E50S700	700	55000	298000	120.0
E50S800	800	76200	409000	129.0
E50S1000	1000	92000	450000	145.0
E50S1200	1200	122000	600000	180.0
E50S1400	1400	200000	100000	210.0
E50S1600	1600	290000	1400000	230.0

Interrupting Rating 200kA RMS Symmetrical.
 *500Vdc rating and UL Recognition on 5 – 800 amps only.
 †UL Recognition on 5 – 1200 amps only.

Time-Current, Minimum Melting Curves

E50SF(Amp) 5 – 30 Amps, 500 Volts
E50S(Amp) 1000 – 1600 Amps, 500 Volts

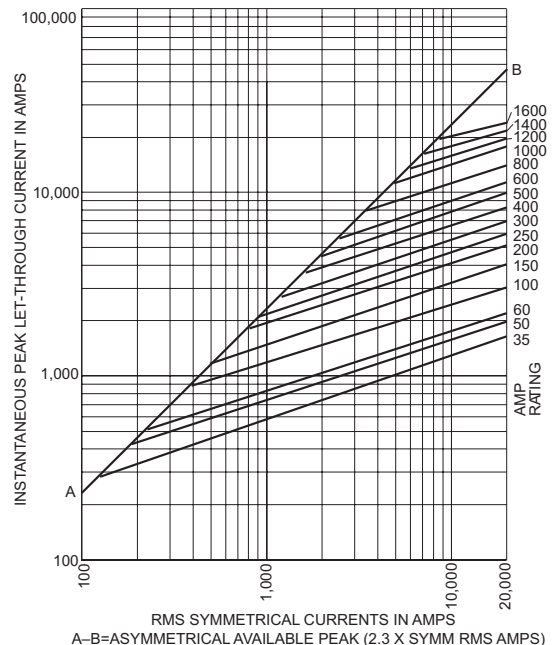
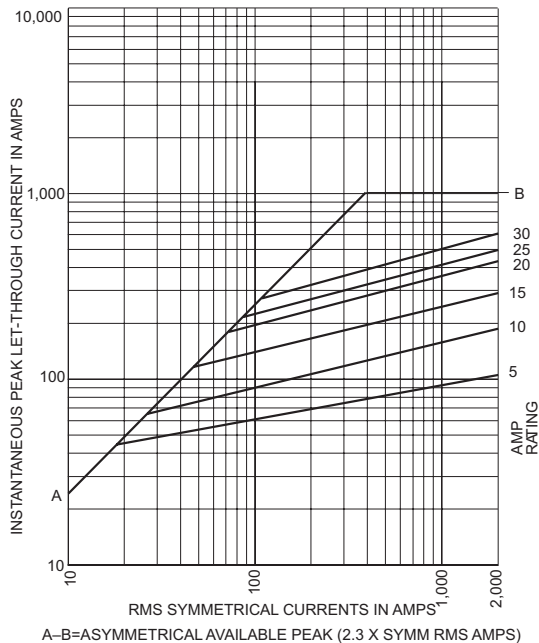
E50S(Amp) High Speed Fuse
35 – 800 Amps, 500 Volts



Peak Let-Through Current Curves

E50SF(Amp) High Speed Fuse
5 – 30 Amps, 500 Volts

E50S(Amp) High Speed Fuse
35 – 1600 Amps, 500 Volts



A-B=ASYMMETRICAL AVAILABLE PEAK (2.3 X SYMM RMS AMPS)

A-B=ASYMMETRICAL AVAILABLE PEAK (2.3 X SYMM RMS AMPS)

Catalog Number E60C(1 – 1000) 600 Volts AC or Less

NOTE: Edison 600V rectifier fuses are for replacement purposes only. For new applications, refer to E70S(Amp) fuses.

Amp Ratings E60C(AMP) 600V					
4	12	40	90	200	450
5	15	45	100	225	500
6	20	50	110	250	600
7	25	60	125	300	700
8	30	70	150	350	800
10	35	80	175	400	1000

E60C(Amp) Dimensions - inches											
Catalog Numbers	Figure	A	B1	B2	B3	C	D	E	F	G	H
E60C4 – 30	1	2.875	2.500	—	—	1.875	0.406	—	0.563	0.063	0.257
E60C35 – 60	2	4.375	—	3.750	3.500	2.750	0.625	0.343	0.813	0.094	0.468
E60C70 – 100	2	5.000	—	4.167	3.656	2.906	0.750	0.406	1.000	0.125	0.609
E60C110 – 200	2	5.500	—	4.375	3.063	2.906	1.125	0.406	1.500	0.188	0.767
E60C225 – 400	1	6.250	4.750	—	—	3.000	1.625	—	2.000	0.250	0.563
E60C450 – 800	1	6.250	4.750	—	—	3.063	2.000	—	2.500	0.250	0.563
E60C1000	1	7.250	4.750	—	—	3.063	2.750	—	3.500	0.375	0.563

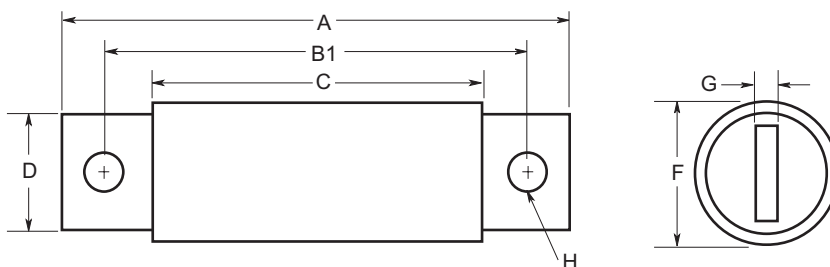


Figure 1: 4 – 30 & 225 – 1000 Amp Range

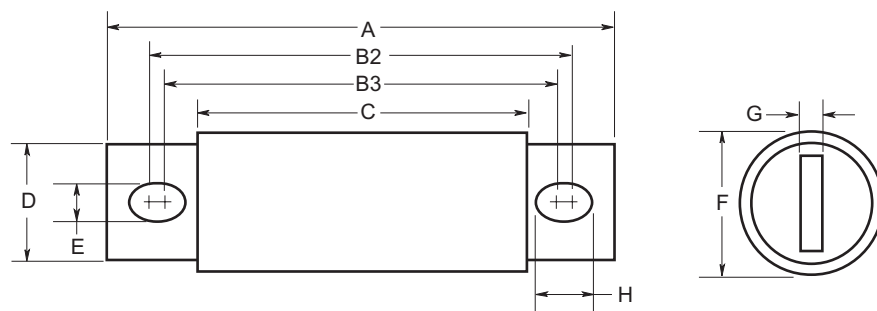
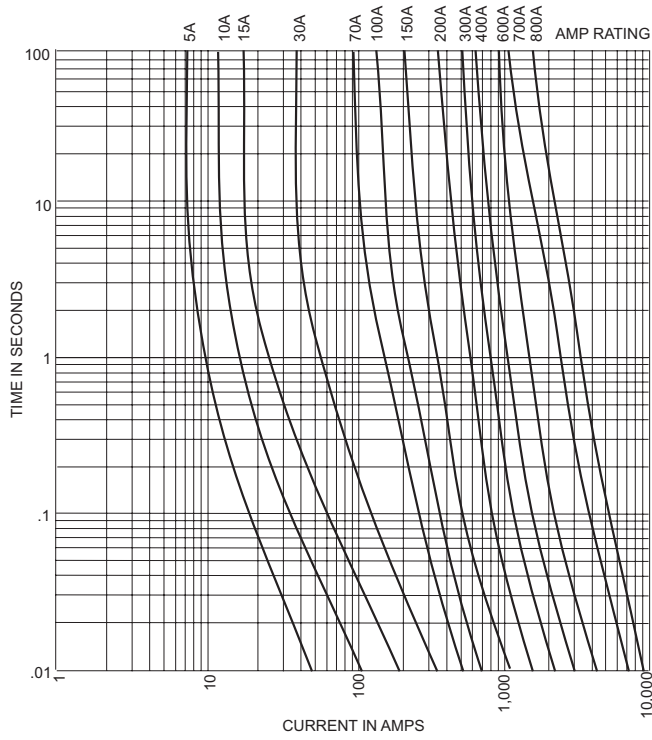


Figure 2: 35 – 200 Amp Range

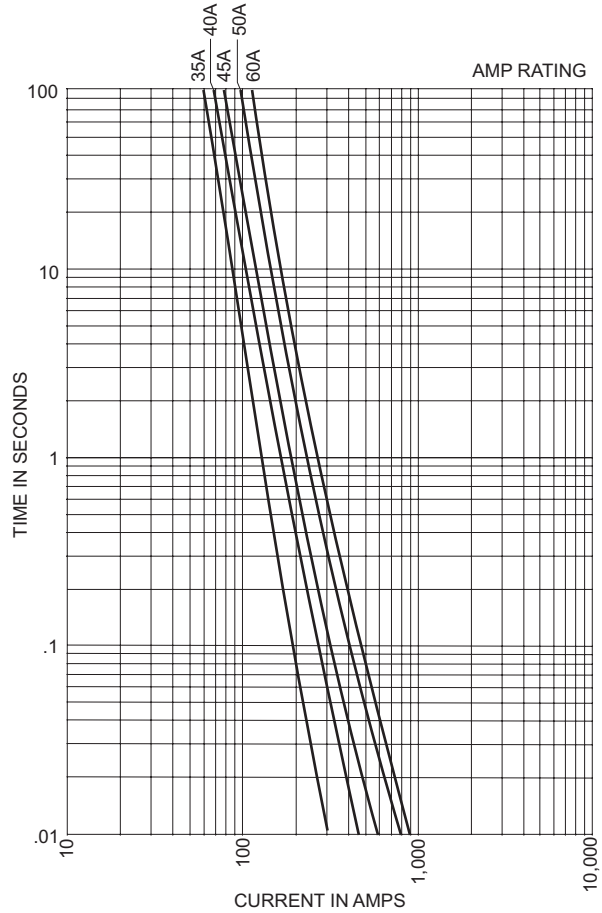
Total Clearing Time Curves

E60C1 – 800, 600Vac



Average Melting Time-Current Curves

E60C35 – 60, 600Vac



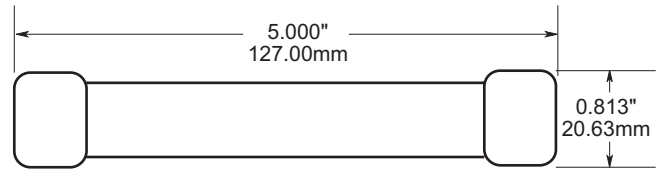
Catalog Number E60SF(5 – 30) 600 Volts AC or Less

NOTE: Edison 600V rectifier fuses are for replacement purposes only. For new applications, refer to E70S(Amp) fuses.

Amp Ratings E60SF(AMP) 600V						
5	10	12	15	20	25	30

E60SF(AMP) Dimensions - inches (mm)	
Catalog Numbers E60SF5 – 30	See Drawing

Dimensions - inches (mm)



Catalog Number E60S(35 – 600) 600 Volts AC or Less

Amp Ratings E60S(AMP) 600V						
35	50	80	125	200	300	450
40	60	90	150	225	350	500
45	70	100	175	250	400	600

E60S(Amp) Dimensions - inches								
Catalog Numbers	Figure	A	B	C	D	F	G	H
E60S35 – 60	1	See Drawing						
E60S70 – 100	2	4.406	3.656	2.906	0.750	1.000	0.125	0.313
E60S110 – 200	2	4.406	3.656	2.906	0.875	1.219	0.188	0.313
E60S225 – 400	2	5.125	4.063	2.906	1.000	1.500	0.250	1.094
E60S450 – 600	2	5.125	4.063	2.875	1.500	2.000	0.250	1.094

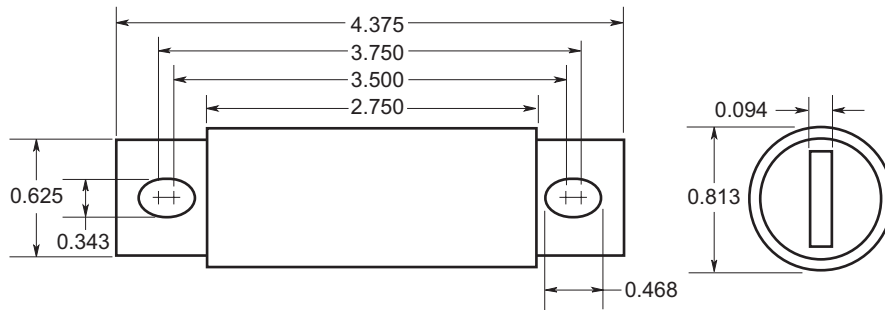


Figure 1: 35 – 60 Amp Range

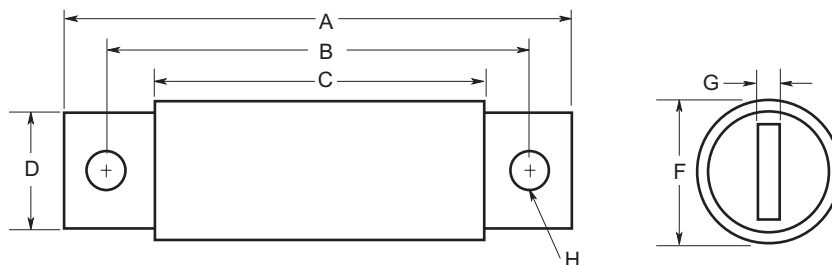
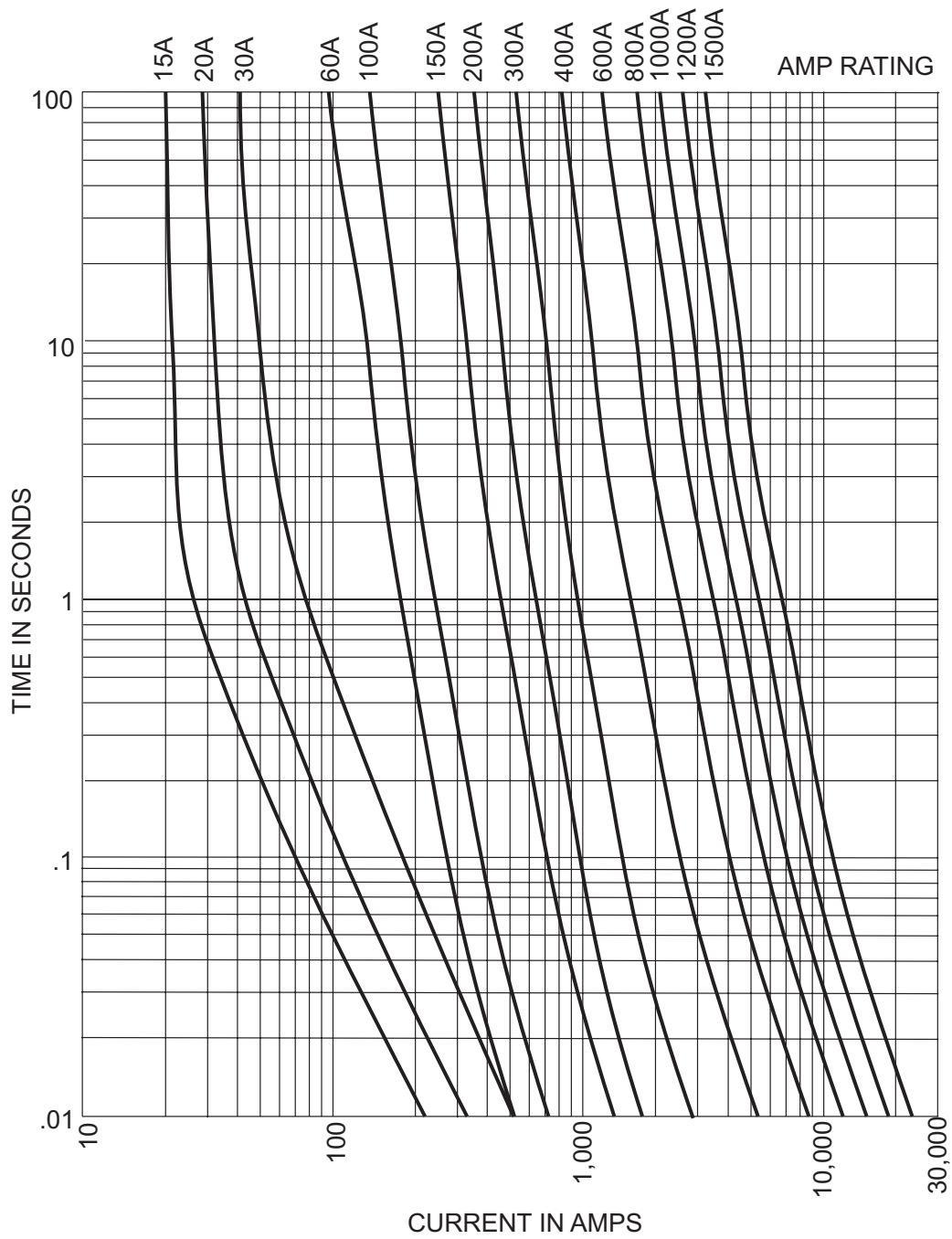


Figure 2: 70 – 600 Amp Range

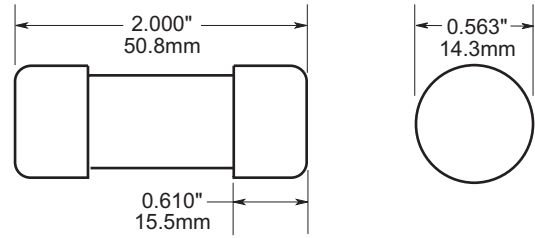
**Total Clearing Time Curves
E60S(Amp) 600Vac**



Catalog Number E70SF(5 – 30) 700Vac/700Vdc

E70SF(AMP) Dimensions - inches (mm)	
Catalog Number E70SF5 – 30	See Drawing

Dimensions - inches (mm)



Catalog Number E70S(35 – 1200) 700Vac/700Vdc*

E70S(Amp) Dimensions - inches (mm)										
Catalog Numbers	Figure	A	B	C	D	E	F	G	H	J
E70S35 – 60	1	4.38 (111)	1.00 (25.4)	2.84 (72.1)	3.78 (96)	3.44 (87.4)	0.34 (8.6)	0.75 (19.1)	0.13 (3.3)	0.52 (13.2)
E70S70 – 100	1	4.38 (111)	1.22 (31)	2.84 (72.1)	3.69 (93.7)	3.44 (87.4)	0.34 (8.6)	1.00 (25.4)	0.19 (4.8)	0.47 (11.9)
E70S125 – 200	1	5.09 (129)	1.50 (38.1)	2.84 (72.1)	4.19 (106)	3.50 (88.9)	0.41 (10.4)	1.00 (25.4)	0.25 (6.4)	0.75 (19.1)
E70S225 – 400	1	5.09 (129)	2.00 (50.8)	2.84 (72.1)	4.28 (109)	3.53 (89.7)	0.41 (10.4)	1.50 (38.1)	0.25 (6.4)	0.78 (19.8)
E70S450 – 600	1	7.09 (180)	2.50 (63.5)	2.84 (72.1)	5.72 (145)	4.19 (106)	0.53 (13.5)	2.00 (50.8)	0.38 (9.7)	1.30 (33)
E70S700 – 800	1	6.63 (168)	2.00 (50.8)	2.84 (72.1)	5.56 (141.2)	5.06 (128.6)	0.63 (15.9)	1.50 (38.1)	0.25 (6.4)	0.88 (22.2)
E70S900 – 1000	2	See Drawing								
E70S1200	3	See Drawing								

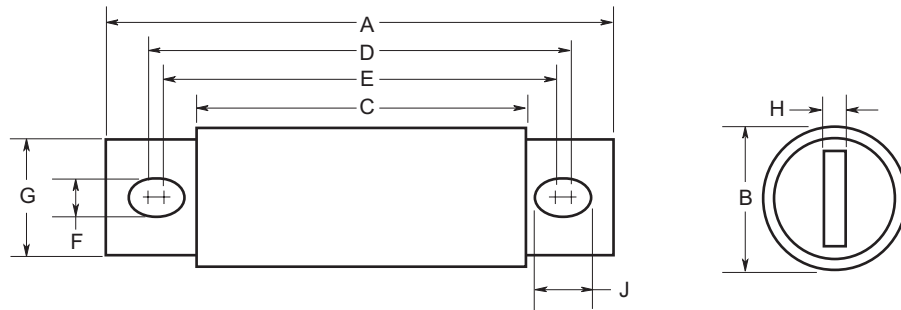


Figure 1: 35 – 800 Amp Range

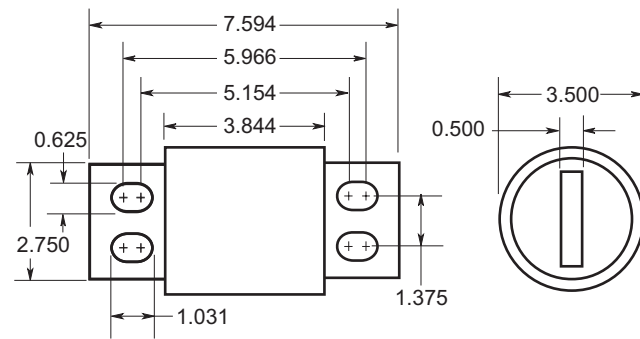


Figure 2: 900 – 1000 Amp Range

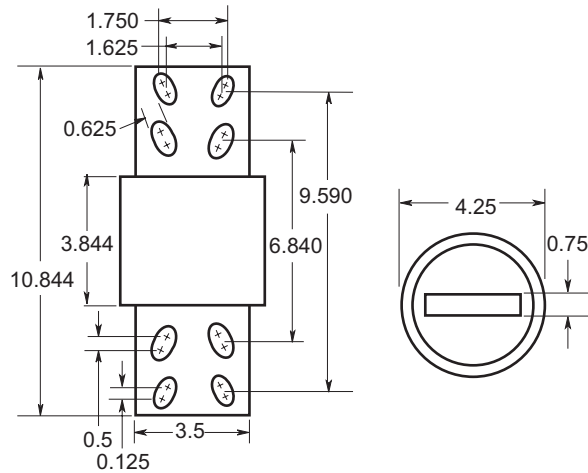
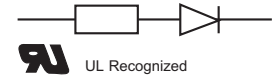


Figure 3: 1200 Amp Range

Catalog Number E70S(Amp) 700Vac/700Vdc*

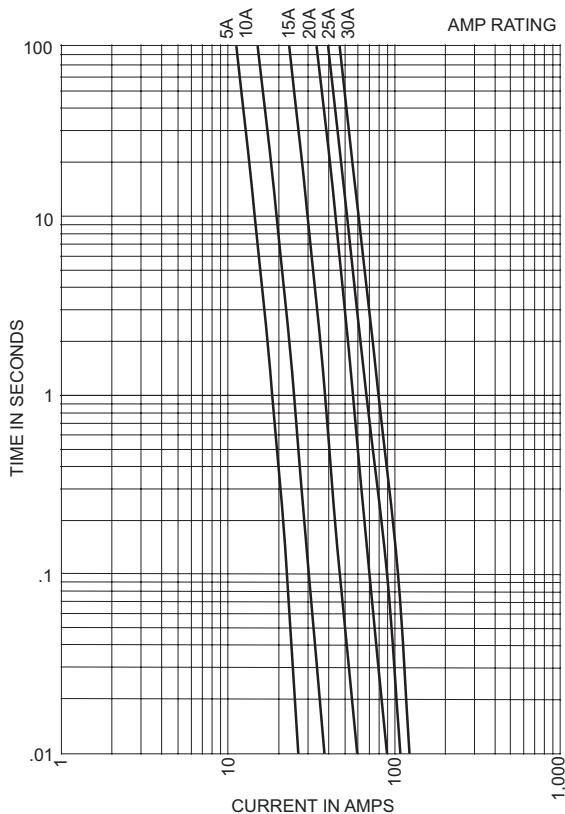


E70S(Amp) 700Vac/700Vdc Electrical Characteristics				
Catalog Number	Rated Current RMS Amps	Melting I ² t	Clearing I ² t @ 700V	Watts Loss @ Rated Current
E70SF5	5	1.6	4	1.5
E70SF10	10	3.6	10	4.0
E70SF15	15	10.0	22	5.5
E70SF20	20	26.0	60	6.0
E70SF25	25	44.0	130	7.0
E70SF30	30	58.0	150	9.0
E70S35	35	80.0	370	9.8
E70S40	40	100	460	11.5
E70S50	50	200	840	13.4
E70S60	60	310	1300	15.1
E70S70	70	470	2200	17.0
E70S80	80	620	2900	20.0
E70S90	90	800	3700	23.0
E70S100	100	1030	4800	25.0
E70S125	125	1800	7300	28.0
E70S150	150	2900	11700	32.0
E70S175	175	4200	16700	35.0
E70S200	200	5600	22000	43.0
E70S225	225	7700	31300	45.0
E70S250	250	10500	42500	48.0
E70S300	300	17600	71200	58.0
E70S350	350	23700	95600	65.0
E70S400	400	31000	125000	78.0
E70S450	450	36400	137000	94.0
E70S500	500	45200	170000	107.0
E70S600	600	66700	250000	122.0
E70S700	700	54000	300000	125.0
E70S800	800	78000	450000	140.0
E70S900	900	91500	530000	150.0
E70S1000	1000	120000	600000	170.0
E70S1200	1200	195000	1100000	190.0

Interrupting Rating 200kA RMS Symmetrical
 *700Vdc rating applies to 5 – 800 amps only.

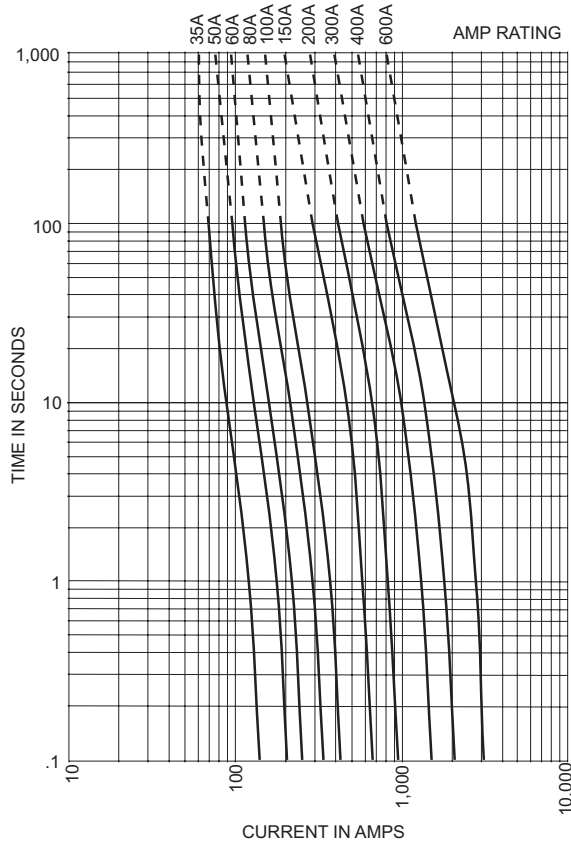
Pre-Arcing Time-Current Curves

E70SF(Amp)
5 – 30 Amps, 700 Volts



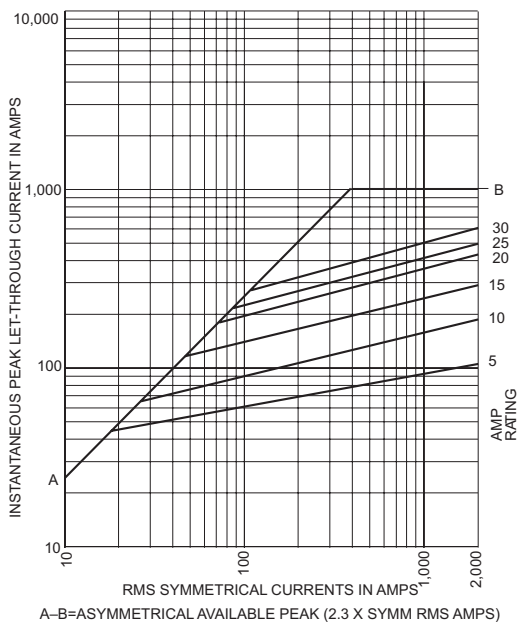
Minimum Melt Time-Current Curves

E70S(Amp)
35 – 600 Amps, 700 Volts



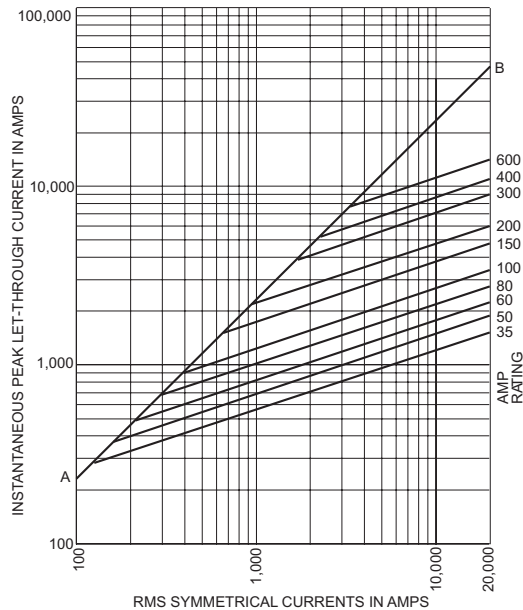
Peak Let-Through Current Curves

E70SF(Amp)
5 – 30 Amps, 700 Volts



A-B=ASYMMETRICAL AVAILABLE PEAK (2.3 X SYMM RMS AMPS)

E70S(Amp)
35 – 600 Amps, 700 Volts



A-B=ASYMMETRICAL AVAILABLE PEAK (2.3 X SYMM RMS AMPS)

UL/CSA Fuses
Current Limiting

UL/CSA Fuses
General Purpose

Special
Purpose Fuses

Canadian
Fuses & Holders

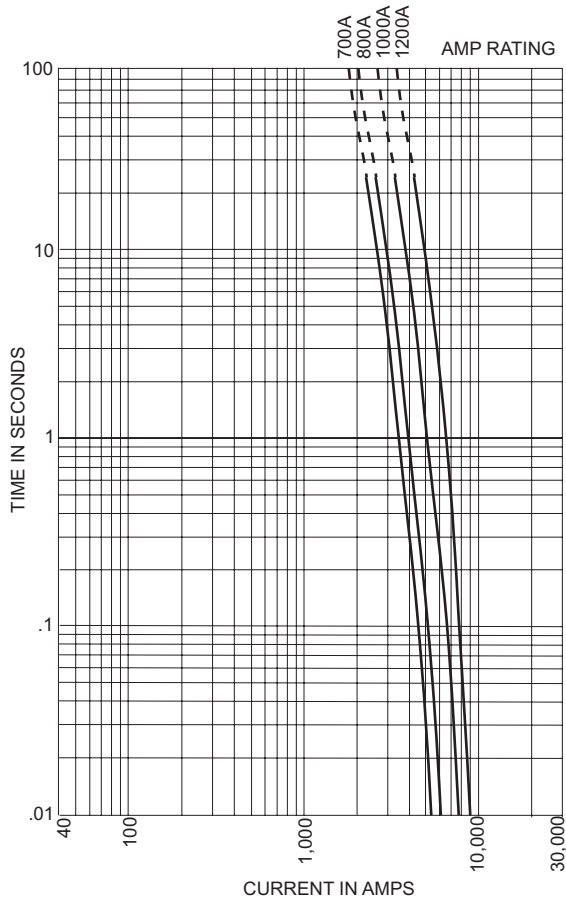
Medium
Voltage Fuses

Fuse Blocks,
Holders & Misc.

Application
Section

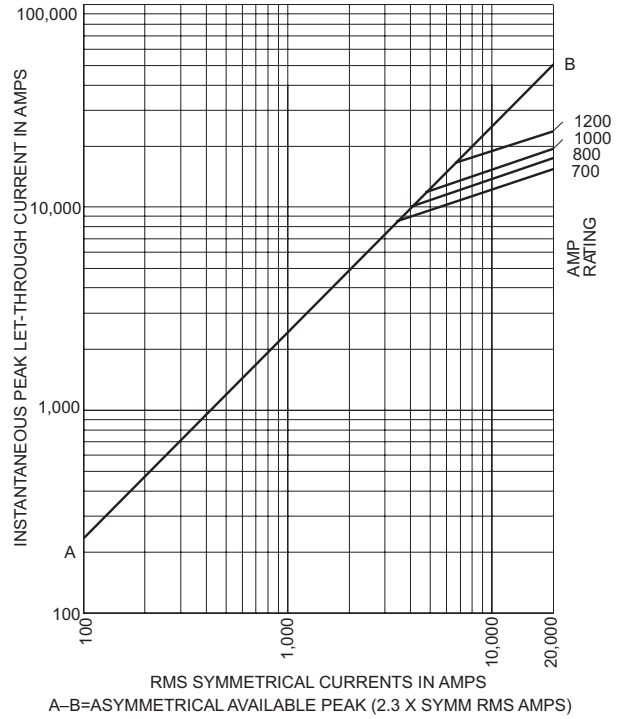
Minimum Melt Time-Current Curves

E70S(Amp)
700 – 1200 Amps, 700 Volts



Peak Let-Through Current Curves

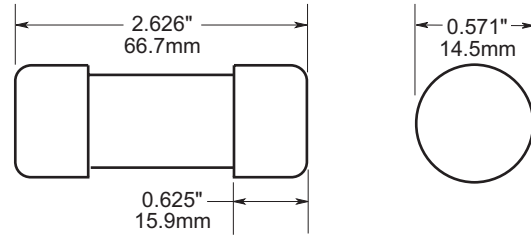
E70S(Amp)
700 – 1200 Amps, 700 Volts



Catalog Number E100SF(20 – 30) 1000Vac/800Vdc

E100SF(AMP) Dimensions - inches (mm)	
Catalog Numbers E100SF20 – 30	See Drawing

Dimensions - inches (mm)



Catalog Number E100S(40 – 800) 1000Vac/700Vdc

E100S(Amp) Dimensions - inches (mm)										
Catalog Numbers	Figure	A	B	C	D	E	F	G	H	J
E100S40 – 60	1	5.00 (127.0)	0.94 (23.9)	3.11 (79.0)	4.24 (107.6)	4.18 (106.2)	0.35 (8.9)	0.75 (19.1)	0.13 (3.2)	0.38 (9.7)
E100S70 – 100	1	4.93 (125.3)	1.13 (28.6)	3.09 (78.4)	4.27 (108.4)	4.16 (105.6)	0.35 (8.9)	1.00 (25.4)	0.19 (4.8)	0.41 (10.3)
E100S125 – 200	1	5.69 (144.4)	1.53 (38.8)	3.26 (82.8)	4.63 (117.6)	4.58 (116.4)	0.45 (11.3)	1.00 (25.4)	0.25 (6.4)	0.47 (11.9)
E100S250 – 400	1	5.77 (146.5)	2.00 (50.8)	3.50 (88.9)	4.81 (122.2)	4.15 (105.4)	0.439(11.0)	1.50 (38.1)	0.25 (6.4)	0.76 (19.4)
E100S500 – 600	1	7.20 (182.9)	2.50 (63.5)	3.47 (88.0)	5.98 (152.0)	4.71 (119.5)	0.56 (14.3)	2.00 (50.8)	0.38 (9.5)	1.20 (30.5)
E100S800	1	6.81 (173.0)	3.50 (88.9)	3.31 (84.1)	5.47 (139.0)	4.96 (126.0)	0.63 (15.9)	2.75 (69.9)	0.50 (12.7)	0.88 (22.4)

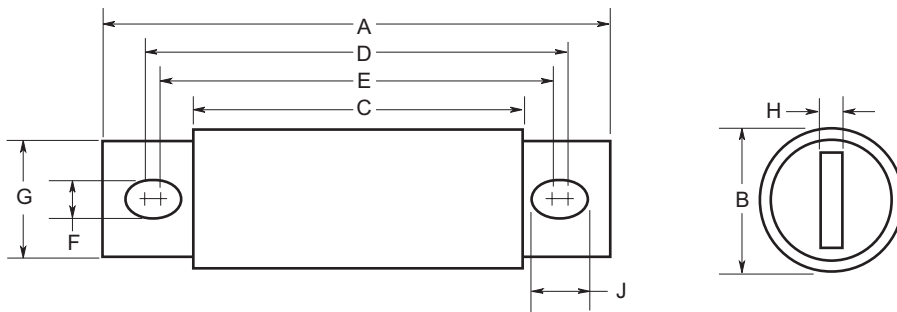
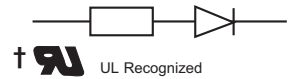


Figure 1: 40 – 800 Amp Range

Catalog Number E100S(Amp) 1000Vac/700Vdc*



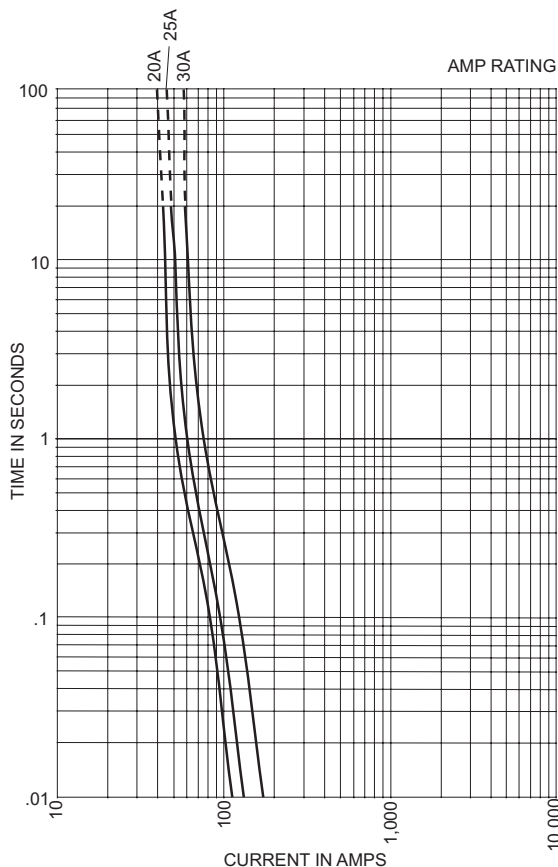
E100S(Amp) 1000Vac/700Vdc Electrical Characteristics:				
Catalog Number	Rated Current RMS Amps	Melting I ² t	Clearing I ² t @ 1000V	Watts Loss @ Rated Current
E100SF20	20	25.0	220	9.0
E100SF25	25	33.0	350	11.0
E100SF30	30	52.0	450	14.0
E100S40	40	300	2500	9.8
E100S50	50	470	3500	8.0
E100S60	60	670	5000	10.0
E100S70	70	1100	6900	11.0
E100S80	80	1550	9700	12.0
E100S90	90	1900	12000	13.0
E100S100	100	2800	17500	14.0
E100S125	125	4800	35000	15.0
E100S150	150	6300	45000	16.0
E100S175	175	7500	65000	25.0
E100S200	200	11700	80000	30.0
E100S250	250	9000	50000	32.0
E100S300	300	15000	80000	50.0
E100S350	350	22000	120000	56.0
E100S400	400	32000	180000	62.0
E100S500	500	28500	155000	95.0
E100S600	600	646500	260000	105.0
E100S800	800	87000	500000	182.0

Interrupting Rating 200kA RMS Symmetrical
 *Amp ratings 20 – 500 rated up to 800Vdc.
 †UL Recognition through 200 amps only.

- UL/CSA Fuses
Current Limiting
- UL/CSA Fuses
General Purpose
- Special
Purpose Fuses
- Canadian
Fuses & Holders
- Medium
Voltage Fuses
- Fuse Blocks,
Holders & Misc.
- Application
Section

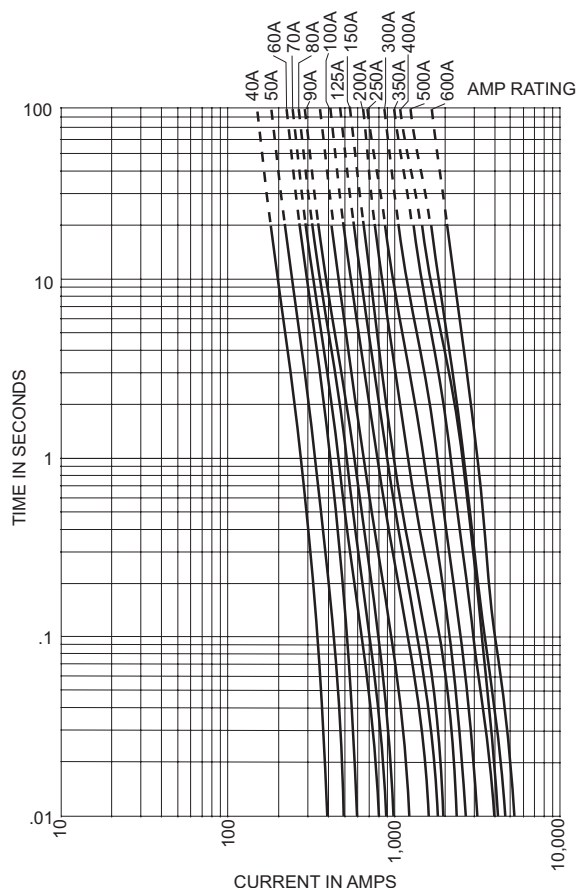
Pre-Arcing Time-Current Curves

E100SF(Amp)
20 – 30 Amps, 1000Vac/800Vdc



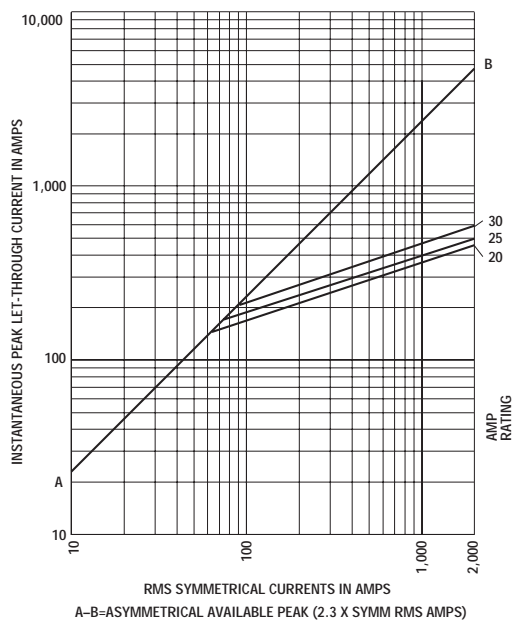
Minimum Melt Time-Current Curves

E100S(Amp)
40 – 600 Amps, 1000Vac/700Vdc

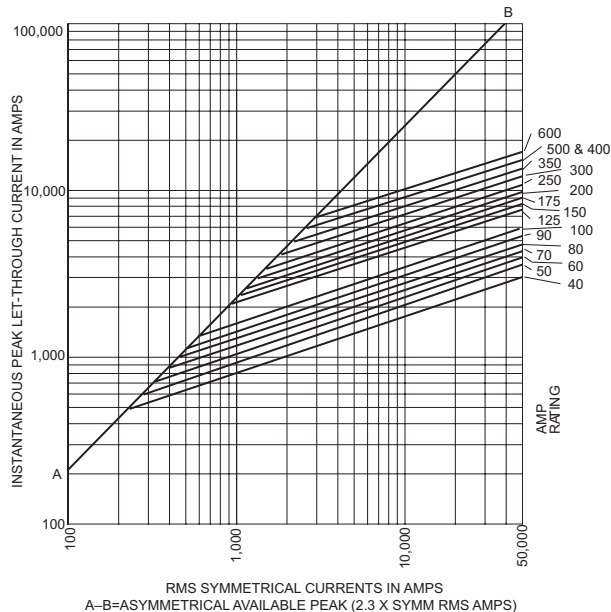


Peak Let-Through Current Curves

E100SF(Amp)
20 – 30 Amps



E100S(Amp)
40 – 600 Amps



UL/CSA Fuses
Current Limiting

UL/CSA Fuses
General Purpose

Special
Purpose Fuses

Canadian
Fuses & Holders

Medium
Voltage Fuses

Fuse Blocks,
Holders & Misc.

Application
Section



Introduction

British BS 88 Contents

Fuse Volts	Amp Range
240	6-900
690	6-710

Accessories

- Indicator System (see end of this section)
- Fuse Blocks (see BH Series fuse blocks in this catalog)

British BS 88 Fuse Ranges

Amps	Volts	AC	DC
6-900	240	X	—
6-900	150	—	X
6-700	690	X	—
6-700	500	—	X

General Information

Designed and tested to:

- BS 88: Part 4
- IEC 269: Part 4
- UL Recognized

We offer the industry's widest range of British style semiconductor fuses and accessories.

Edison British style products use innovative arc quenching techniques and high grade materials to provide:

- Minimal energy let-through (I^2t)
- Excellent DC performance
- Good surge withstand profile

British style fuses are typically found in equipment manufactured in the United Kingdom or British Commonwealth countries. However, North American manufacturers have begun to specify British style fuses — particularly in UPS applications at 240V or less — to take advantage of their size, performance and cost benefits.

Voltage Rating

All Edison British style fuses are tested to IEC 269: Part 4. This standard requires a test voltage which is 5% higher than the rated voltage. In North America, fuses are required to clear only their rated voltage.

Accessories

Trip-indicator fuses are available for use in parallel with the main fuse. Indicator fuses can be attached to the associated fuse, or mounted separately in panel-mounted fuseclips. In addition, a push-on adapter and microswitch attachment are available, to provide remote indication. The BH Series fuse blocks are also available for most applications.

660 Volt (AC) Range

Type	Outline	Part Number	I ² t			Watts Loss	DC Volts	Carton Qty.	Carton Weight (kg)
			Pre-arc	Clearing At 415V	Clearing At 690V				
ET		25ET	25	150	250	7	450	10	0.420
		32ET	32	190	350	11		10	0.420
FE		35FE	33	130	200	9	450	10	0.420
		40FE	52	180	300	9		10	0.420
		45FE	76	270	450	11		10	0.420
		50FE	103	380	600	11		10	0.420
		63FE	135	480	750	12		10	0.420
		71FE	210	600	950	17		10	0.420
		80FE	250	900	1500	20		10	0.420
		90FE	360	1300	2100	20		10	0.420
		100FE	470	1800	2800	23		10	0.420
		FEE		100FEE	400	1600		2400	24
120FEE	540			1900	3100	32	5	0.450	
140FEE	850			2500	3800	36	5	0.450	
160FEE	1000			3700	5700	46	5	0.450	
180FEE	1400			5300	8400	46	5	0.450	
200FEE	1900			7100	11400	52	5	0.450	
FM				180FM	1400	7500	13500	40	450
		200FM	2600	10500	18500	40	1	0.240	
		225FM	3700	14500	26500	44	1	0.240	
		250FM	5200	20500	37500	48			
		280FM	7000	30500	55000	48	1	0.240	
		315FM	10000	40000	77000	55	1	0.240	
		350FM	15000	60000	105000	55	1	0.240	
		FMM		400FMM	10000	40000	72500	85	
450FMM	15000			60000	105000	90	1	0.450	
500FMM	20000			82000	15000	100	1	0.450	
550FMM	30000			120000	215000	100	1	0.450	
630FMM	45000			180000	310000	100	1	0.450	
700FMM	60000			245000	420000	120	1	0.450	

- Interrupting rating 200kA RMS Symmetrical.
- Watts loss provided at rated current.
- These fuses meet the requirements of BS 88 Part 4 and IEC 269-4.
- Consult Edison Customer Satisfaction for UL Recognition information.

UL/CSA Fuses
Current Limiting

UL/CSA Fuses
General Purpose

Special
Purpose Fuses

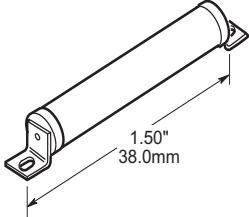
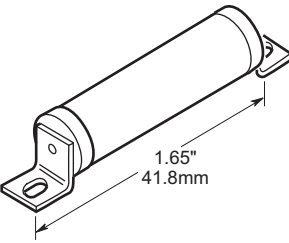
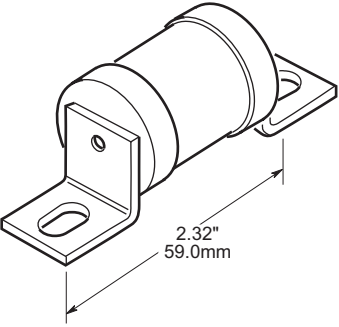
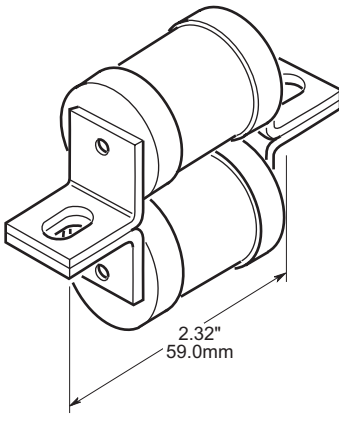
Canadian
Fuses & Holders

Medium
Voltage Fuses

Fuse Blocks,
Holders & Misc.

Application
Section

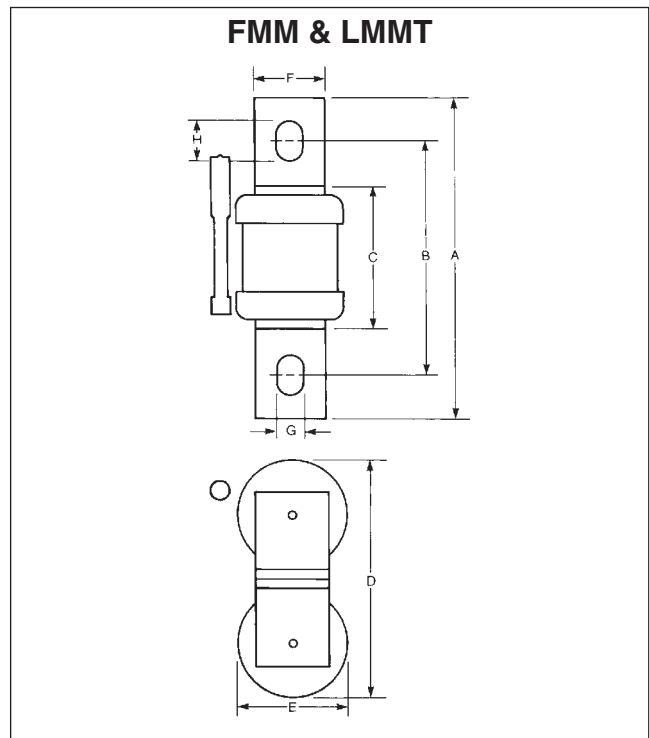
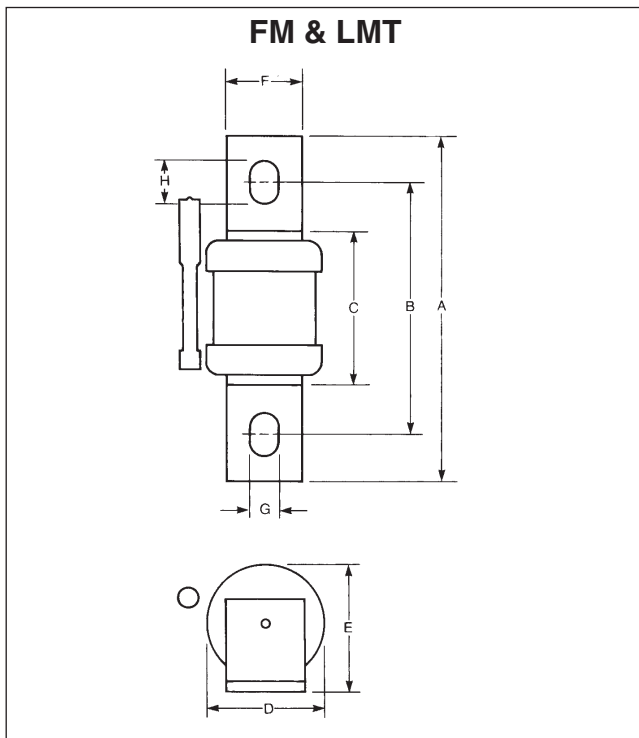
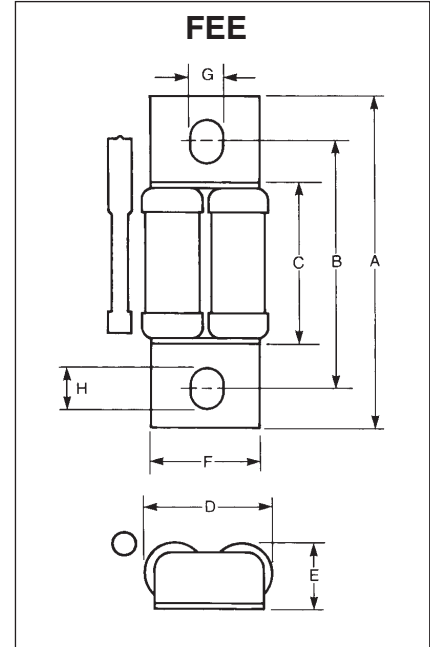
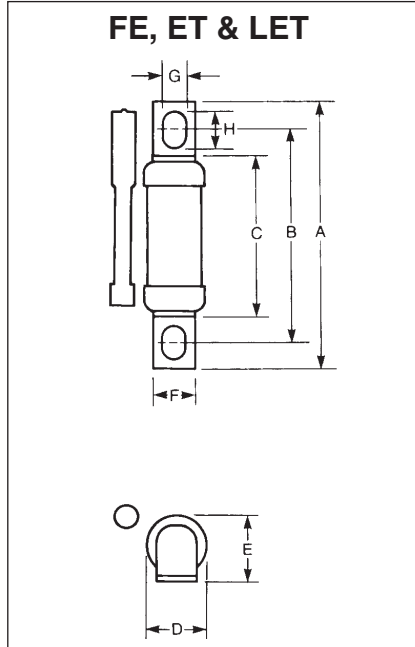
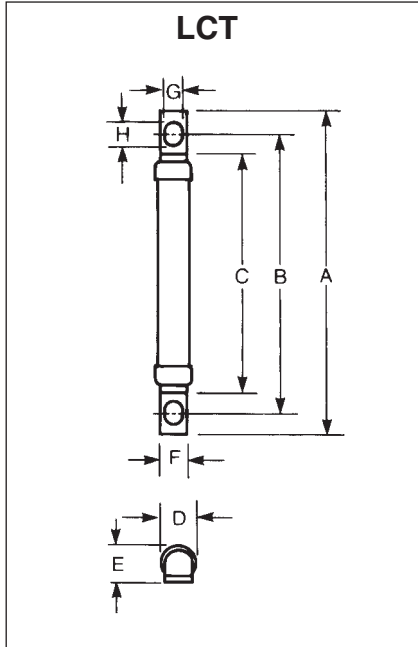
240 Volt (AC) Range

Type	Outline	Part Number	I ² t			Watts Loss	DC Volts	Carton Qty.	Carton Weight (kg)
			Pre-arc	Clearing At 120V	Clearing At 240V				
LCT		6LCT	2	6	9	1.0	200	20	0.110
		10LCT	3.8	12	22	2.5		20	0.110
		12LCT	7	22	32	2.5		20	0.110
		16LCT	20	50	100	2.5		20	0.110
		20LCT	25	80	160	4.0		20	0.110
LET		25LET	18	120	250	4.0	140	10	0.310
		32LET	32	200	450	5.0		10	0.310
		35LET	50	320	600	5.0		10	0.310
		50LET	100	500	1400	7.0		10	0.310
		63LET	180	1100	2200	9.0		10	0.310
		80LET	300	1900	3800	10.0		10	0.310
		100LET	600	3800	7500	10.0		10	0.310
		125LET	600	3800	7500	10.0		10	0.310
		160LET	1100	7000	18000	20.0		10	0.310
		180LET	1600	12000	29000	21.0		10	0.310
LMT		160LMT	1100	7000	16000	17.0	160	1	0.180
		200LMT	1500	10000	20000	28.0		1	0.180
		250LMT	3200	20000	40000	28.0		1	0.180
		315LMT	6000	35000	75000	35.0		1	0.180
		355LMT	8000	50000	100000	35.0		1	0.180
		400LMT	14000	70000	160000	40.0		1	0.180
		450LMT	18000	100000	220000	42.0		1	0.180
LMMT		400LMMT	6000	35000	80000	60.0	160	1	0.370
		400LMMT	14000	80000	170000	64.0		1	0.370
		400LMMT	24000	150000	300000	75.0		1	0.370
		400LMMT	32000	200000	460000	77.0		1	0.370
		400LMMT	52000	300000	600000	82.0		1	0.370
		400LMMT	75000	400000	800000	97.0		1	0.370

- Interrupting rating 200kA RMS Symmetrical.
- Watts loss provided at rated current.
- All fuses above have been tested to 318Vac.
- These fuses meet the requirements of BS 88 Part 4 and IEC 269-4.
- UL Recognition on LET and LMT. Others pending – Consult Edison Customer Satisfaction.

Dimensions - mm

Type	A	B	C	D	E	F	G	H
LCT	47	38	28	8.4	8.7	6.4	4	5.5
FE & ET	77	63.5	48	17.7	19.1	12.7	7.1	9.7
LET	56	41.8	26.2	17.7	19.1	12.7	7.1	9.7
FEE	94	70	46	37	19	31.8	8.7	11.9
FM	113	80-85	50	38	41.5	25.4	10.3	14
LMT	84	59	31	38.1	41	25.4	10.3	13.5
FMM	113	80-85	50	83	38	25.4	10.3	14
LMMT	84	59	31	83	38	25.4	10.3	13.5



UL/CSA Fuses
Current Limiting

UL/CSA Fuses
General Purpose

Special
Purpose Fuses

Canadian
Fuses & Holders

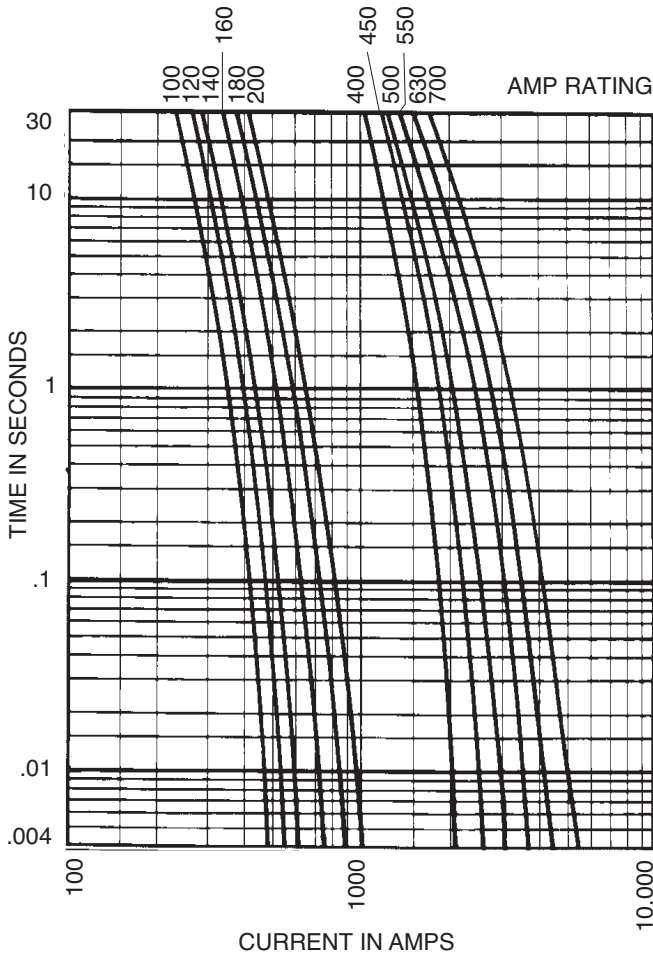
Medium
Voltage Fuses

Fuse Blocks,
Holders & Misc.

Application
Section

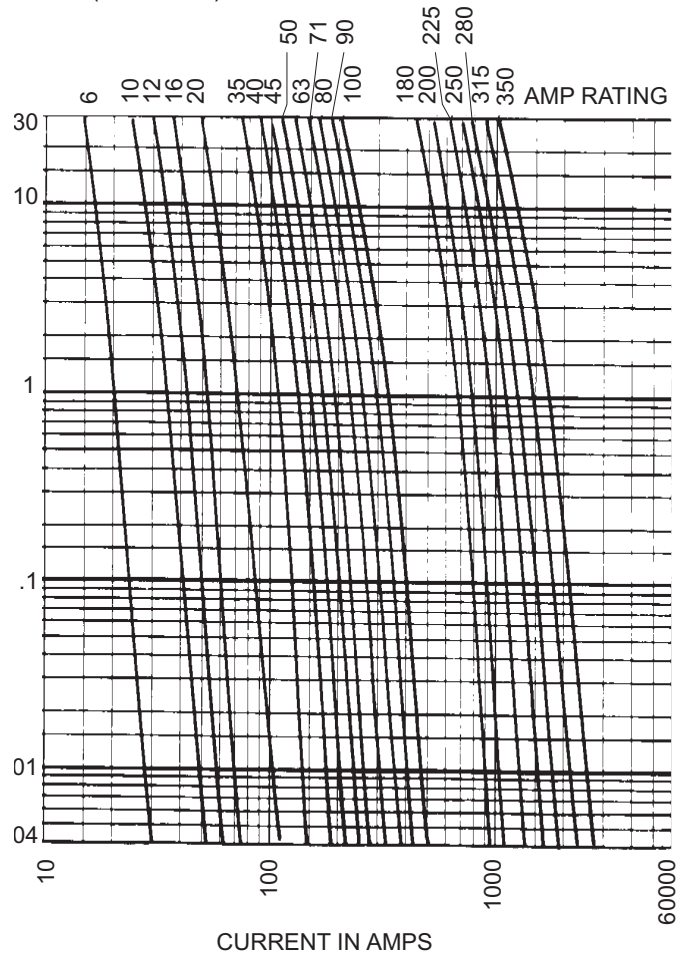
690V Time-Current Curves

FEE (100-200A)
FMM (400-700A)

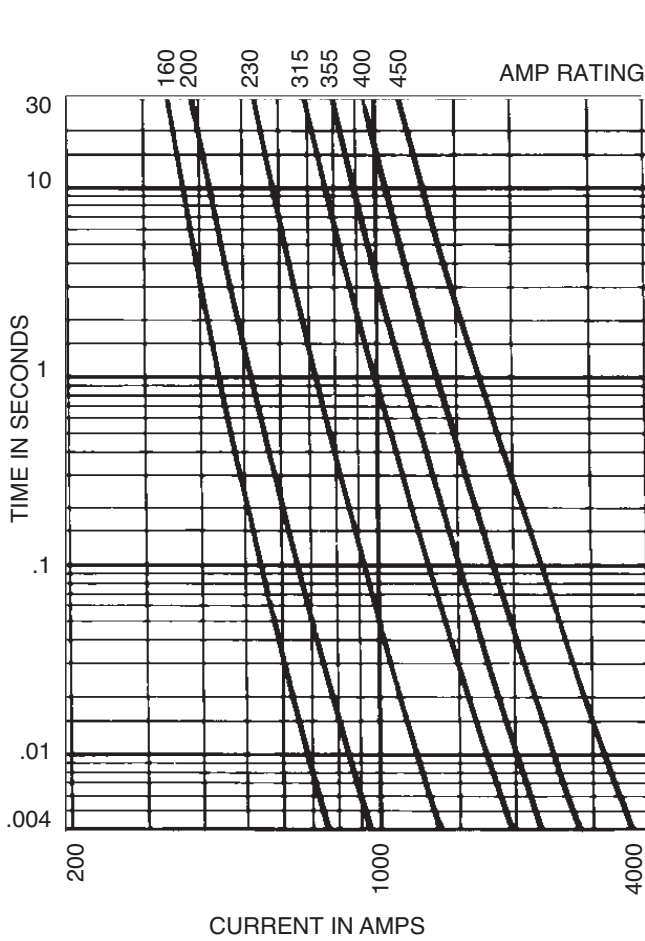


690V Time-Current Curves

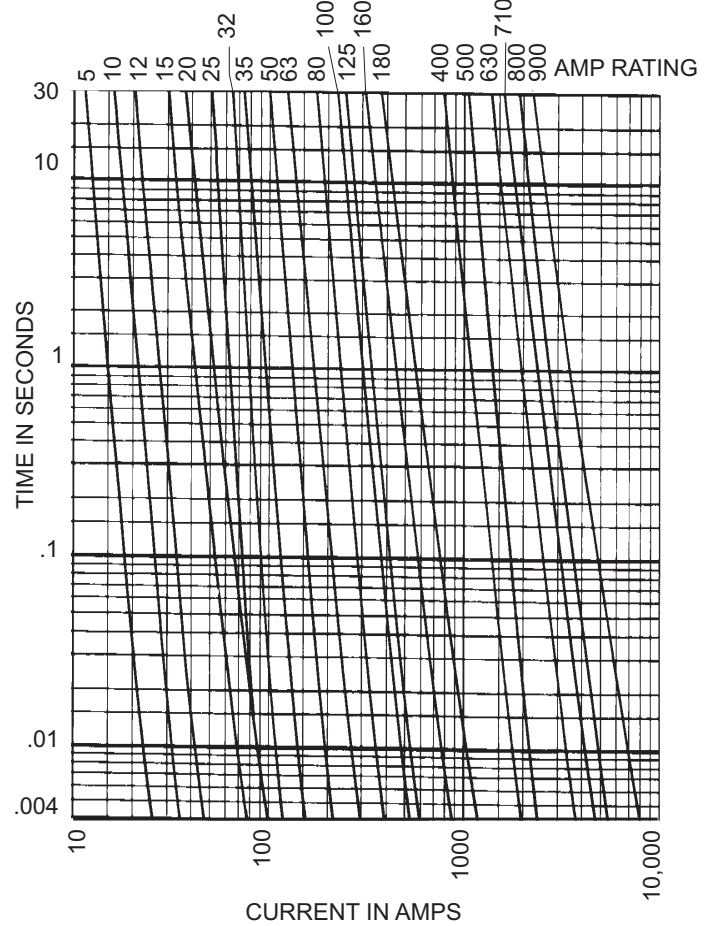
FC (6-20A)
FE (35-100A)
FM (180-350A)



240V Time-Current Curves LMT (160-450A)



240V Time-Current Curves LCT (6-20A) LET (25-180A) LMMT (400-900A)



Indicator System

Trip-Indicators

Trip-indicators are available for use in parallel with the main fuse. They can either be attached to the associated fuse or mounted separately in panel mounted fuse clips, reference CL1. A push-on adapter and microswitch attachment is available for use with the trip indicator to give the facility of remote indication, reference MAI.

Fuse ratings of 20A and below cannot usually accommodate a trip-indicator.

When a trip-indicator is to be attached to the main fuse an accessory pack comprising a pair of mounting clips and an appropriate trip indicator would be required. The clips are snapped onto the fuse end caps and the indicator is pressed into clips as shown.

Electrical Specifications

Type	TI500	TI700
Maximum RMS Voltage	500	700
Maximum Peak Voltage	700	1000
Maximum DC Voltage	130	350
Cold Resistance (ohms)	0.3	0.45
Maximum permissible steady-state current	1.5A	1.5A
Interrupting Capacity (RMS Symm.)	100,000	100,000
Pre-Arcing I ² t	23	23

Fuse Indicator Kits

Kit. Ref.	Details	RMS Volts	For use with Fuse Ref.
EC-250	Fuse Mount	250	LET
MC250	Indicator Kits	250	LMT & LMMT
EC-600	(Includes one	660	FE, FEE & ET
MC600	indicator	660	FM & FMM
MC700	and two clips)	700	MT & MMT

CL1 Panel Mount Clips

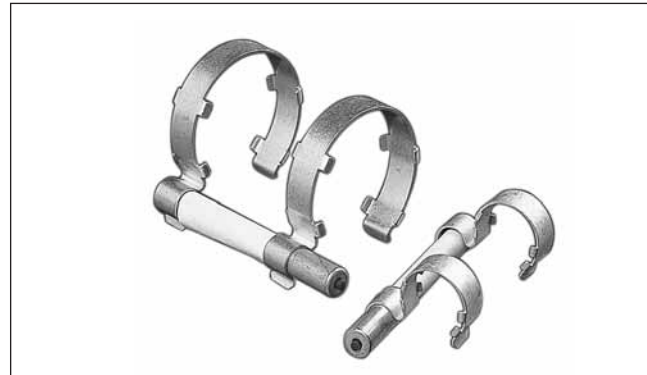
CL1 Panel mount fuse clips are available for mounting a trip-indicator when mounting directly on the fuse is impractical. Order part number CL1.

Microswitch Adapter – MAI

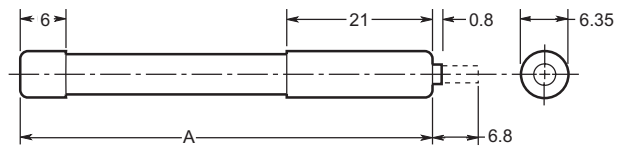
We offer a microswitch, complete with adapter for securing the indicator. The microswitch is provided with double pole, single throw contacts, having both a normally open and a normally closed position. A special material has been employed in the construction of the adapter to provide reliable operation in the range of temperatures associated with standard operating conditions and during fuse operation.

Microswitch and Adapter Type MAI

Current Rating: AC 50/60Hz resistive load @ 250V RMS AC 50/60Hz resistive load @ 127V RMS	4A 6A
DC, resistive load @ 110Vdc DC, resistive load @ 30Vdc	0.7A DC 2A DC
Maximum Working Voltage: Contact-to-contact (RMS) Contact-to-contact (RMS)	1000V 1500V
Maximum DC Volts:	110V DC

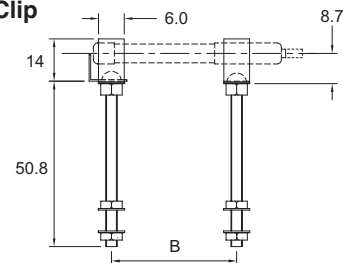


Trip-Indicator Dimensions - mm

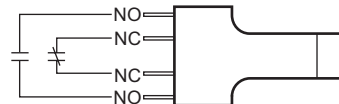


Ref.	Dim. "A" (mm)	RMS Volts
TI250	37.6	250
TI500	47.5	500
TI600	55.7	600
TI700	61.8	700
TI1100	98.4	1100
TI1500	120.6	1500
TI2000	147.5	2000
TI2500	198.3	2500

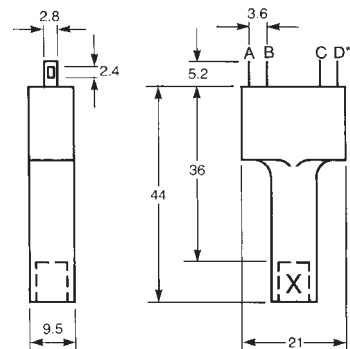
CL1 Panel Mount Clip Dimensions - mm



Terminal Arrangement



Dimensions in mm



**A=D=N/O contacts
B=C=N/C contacts



Type D "Bottle" Fuse

Amp Ratings: 2 to 100 Amps
Voltage Ratings: 500Vac
Interrupting Rating: 100kA
Agency Approvals:

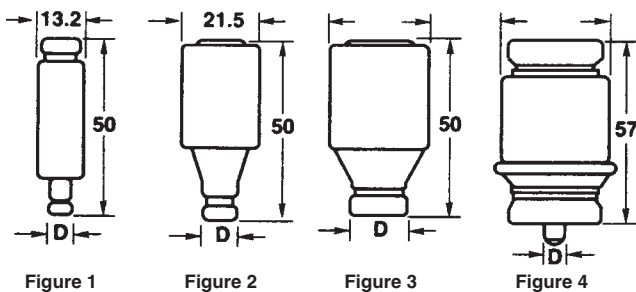
"D" type fuses complying with DIN 49360 (time lag) 2 and DIN 49515, operating class gG/gL

Catalog Number	Dimension "D"	Ampere Rating	Color Code	Figure Number
2D16	6	2	Pink	1
4D16	6	4	Brown	
6D16	6	6	Green	
10D16	8	10	Red	
16D16	10	16	Gray	
20D16	12	20	Blue	
25D16	14	25	Yellow	2
2D27	6	2	Pink	
4D27	6	4	Brown	
6D27	6	6	Green	
10D27	8	10	Red	
16D27	10	16	Gray	
20D27	12	20	Blue	3
25D27	14	25	Yellow	
35D33	16	35	Black	
50D33	18	50	White	4
63D33	20	63	Copper	
80D125	5	80	Silver	4
100D125	7	100	Red	

Additional fuse links: Quick acting fuse links in body size D16, D27, D33 and D125 rated 2-100 amps. Reference number with suffix "Q", i.e. 10D27Q. Voltage rating 500 volts ultra fast-acting fuse links in body size D27, D33, and D125 rated 6-100 amps. Reference number with suffix "R", i.e., 10D27R.

Notes: (a) Gauge rings and keys can also be supplied.

Dimensions - mm



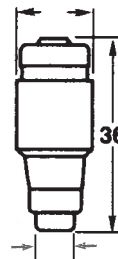
Neozed Fuse

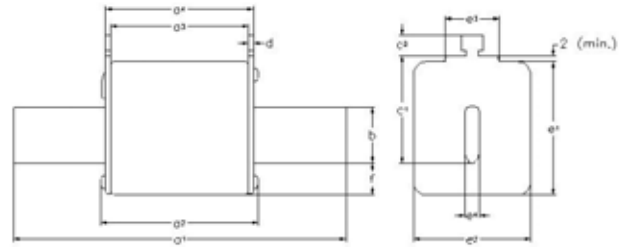
Also suitable for use on 250Vdc systems.

Amp Ratings: 2 to 63 Amps
Voltage Ratings: 400Vac
Interrupting Rating: 100kA

Catalog Number	Dimension "D"	Contact Diameter D ₁	Amp Rating	Color Code
2NZ01	11	7.3	2	Pink
4NZ01	11	7.3	4	Brown
6NZ01	11	7.3	6	Green
10NZ01	11	8.5	10	Red
16NZ01	11	9.7	16	Gray
20NZ02	15	10.9	20	Blue
25NZ02	15	12.1	25	Yellow
35NZ02	15	13.3	35	Black
50NZ02	15	14.5	50	White
63NZ02	15	15.9	63	Copper

Dimensions - mm





Catalog Number NH

HRC Fuse Links

Class of Operation: gG/gL
Amp Ratings: 2 to 1250 Amps
Voltage Ratings: 500Vac
Sizes: 000 to 4

Standards/Approvals: IEC 60269, VDE0636, DIN 43620 part 1 to 4, VDE mark and CE

Description: A square bodied range of industrial fuse links for a wide variety of applications.

Packaging: 3's, except size 4 packed in 1
Ordering Code: Rating/Type Size Category, e.g., 63NHG000B

Technical Data: Contact Edison Customer Satisfaction for curves and I²t Data.

Rated Voltage: 500Vac
Rated Breaking Capacity: 120kA
Rated Frequency: 50 Hz
Operating Frequency: 45 - 62 Hz

Selectivity: 1 : 1.6 up to 500Vac
Design - Insulator: Ceramic
- Metal Parts: Corrosion-proof (top plate also galvanic plated)
Contact Blades: Full contact and insulated blades available, silver-plated brass.
Protection Type: IP00 according to DIN40050
Dimensions: DIN 43620
Tests: VDE 0636/22
Constancy of Characteristics: Resistant of aging.
On/Off Indicator: Patented spring dual indication
Mechanical Stress: Vibrations 7 up to 50Hz with 1 g, shocks with 5 g.
Environmental: 100% recyclable, RoHS compliant, cadmium and lead free across entire range, corrosion free screws.

Dimensions - mm

Size a	a1	a2 (max)	a3	a4	b (rated)	c1 (±8)	c2 (rated)	D (rated)	e1 (max)	e2 (max)	e3 (max)	e4 (rated)	f (max)
000	78.5±1.5	54	45±1.5	49±1.5	15	35	10	2±0.5	41	21	16	6	8
00	78.5±1.5	54	45±1.5	49±1.5	15	35	11	2±0.5	48	30	25	6	15
0	125±2.5	68	62+3/-1.5	68+1.5/-3	15	35	11	2.5±0.5	48	30	25	6	15
01	135±2.5	75	62±2.5	68±2.5	15	40	11	2.5±0.5	48	30	25	6	15
1	135±2.5	75	62±2.5	68±2.5	20	40	11	2.5±0.5	53	52	25	6	15
02	150±2.5	75	62±2.5	68±2.5	20	48	11	2.5±0.5	53	52	25	6	15
2	150±2.5	75	62±2.5	68±2.5	25	48	11	2.5±0.5	61	60	25	6	15
03	150±2.5	75	62±2.5	68±2.5	25	60	11	2.5±0.5	61	60	25	6	15
3	150±2.5	75	62±2.5	68±2.5	32	60	11	3±0.5	75	70	25	6	18
4	200	84	80	90	50	85	10	3	102	87	-	8	30

UL/CSA Fuses
Current Limiting

UL/CSA Fuses
General Purpose

Special
Purpose Fuses

Canadian
Fuses & Holders

Medium
Voltage Fuses

Fuse Blocks,
Holders & Misc.

Application
Section

Size	Amp Rating	500 gG-gL Dual Indicator Part Number	500 gG-gL Dual Indicator with voltage free metal gripping lugs Part Number
000	2	2NHG000B	2NHG000BI
	4	4NHG000B	4NHG000BI
	6	6NHG000B	6NHG000BI
	10	10NHG000B	10NHG000BI
	16	16NHG000B	16NHG000BI
	20	20NHG000B	20NHG000BI
	25	25NHG000B	25NHG000BI
	32	32NHG000B	32NHG000BI
	35	35NHG000B	35NHG000BI
	40	40NHG000B	40NHG000BI
	50	50NHG000B	50NHG000BI
	63	63NHG000B	63NHG000BI
	80	80NHG000B	80NHG000BI
100	100NHG000B	100NHG000BI	
00	125	125NHG00B	125NHG00BI
	160	160NHG00B	160NHG00BI
0	10	10NHGOB	
	16	16NHGOB	
	20	20NHGOB	
	25	25NHGOB	
	32	32NHGOB	
	35	35NHGOB	
	40	40NHGOB	
	50	50NHGOB	
	63	63NHGOB	
	80	80NHGOB	
	100	100NHGOB	
	125	125NHGOB	
	160	160NHGOB	
01	10	10NHG01B	10NHG01BI
	16	16NHG01B	16NHG01BI
	20	20NHG01B	20NHG01BI
	25	25NHG01B	25NHG01BI
	32	32NHG01B	32NHG01BI
	35	35NHG01B	35NHG01BI
	40	40NHG01B	40NHG01BI
	50	50NHG01B	50NHG01BI
	63	63NHG01B	63NHG01BI
	80	80NHG01B	80NHG01BI
	100	100NHG01B	100NHG01BI
	125	125NHG01B	125NHG01BI
	160	160NHG01B	160NHG01BI
1	200	200NHG1B	200NHG1BI
	224	224NHG1B	224NHG1BI
	250	250NHG1B	250NHG1BI
	315	315NHG1B*	
	355	355NHG1B*	
02	35	35NHG02B	35NHG02BI
	40	40NHG02B	40NHG02BI
	50	50NHG02B	50NHG02BI
	63	63NHG02B	63NHG02BI
	80	80NHG02B	80NHG02BI
	100	100NHG02B	100NHG02BI
	125	125NHG02B	125NHG02BI
	160	160NHG02B	160NHG02BI
	200	200NHG02B	200NHG02BI
	224	224NHG02B	224NHG02BI
250	250NHG02B	250NHG02BI	

Size	Amp Rating	500 gG-gL Dual Indicator Part Number	500 gG-gL Dual Indicator with voltage free metal gripping lugs Part Number
2	315	315NHG2B	315NHG2BI
	355	355NHG2B	355NHG2BI
	400	400NHG2B	400NHG2BI
	425	425NHG2B	
03	250	250NHG03B	250NHG03BI
	315	315NHG03B	315NHG03BI
	355	355NHG03B	355NHG03BI
3	400	400NHG03B	400NHG03BI
	425	425NHG3B	
	500	500NHG3B	500NHG3BI
4 Slotted End Tags	630	630NHG3B	
	500	500NHG4G	
	630	630NHG4G	
	800	800NHG4G	
	1000	1000NHG4G	
	1250	1250NHG4G	

* Denotes 440V