



Modular Protection & Control devices

IEC 60898 & IEC 60947-2

Product Guide

- Miniature Circuit Breakers
- RCBOs - with overload protection
- RCCBs - without overload protection
- Command Control products

**Modular solutions for
Circuit Protection & Control**



Eaton's Electrical operations

As a market-leading manufacturer of circuit protection and control equipment, Eaton's world leading switch and fuse-gear, circuit breaker and wiring accessory products are distributed across the globe. Incorporating the latest technological advances, Eaton products are the result of a comprehensive ongoing development programme and comply with the industry's most rigorous quality standards. This all serves to make Eaton an industry benchmark, with unsurpassed quality and performance guaranteed. This extensive product range, together with a lengthy experience and specialist knowledge serves to make Eaton your first source solutions provider.

Find out more on www.eatonelectrical.com



World-Class Support

At Eaton, our goal is to deliver world-class support as well as products.

This is why we continue to invest in our customer service capability to ensure you have easy access to the services you need, when you need them.

Integrated service strategy

Our integrated service strategy is based upon linking key locations and personnel along with a complete range of services to provide you "one-call" customer service. A central support number allows you to access these support services by selecting the product group and service required. We then ensure it is quickly routed to a qualified support agent. The result is service that delivers you solutions ... fast.

A single point of contact for all your enquiries is just one of the benefits you can look forward to as an Eaton customer.

Services Portfolio

Extensive support services

Our service strategy includes an extensive selection of technical and commercial services designed to help you specify, order and receive products quickly and efficiently.

Price & Availability

- Prompt Product Pricing
- Up-to-date stock availability

Order & Shipment status

- Order Checking and Status
- Shipment details

Technical Support

- "Over the phone" resolution
- Technical data assistance
- Selection and cross-reference

After Sales Support

- Debit/Credit note resolution
- Policy Returns support

Project Co-Ordination

- Order tracking for Systems based orders
- On-site Project Management service
- Tailored Delivery service

Engineered Site Services

- Installation and Commissioning
- Maintenance and Service Solution support
- 24 hour "call out" emergency service

Distributor Product Training

- Individual or Group Product training forums
- Use of "In house" training facilities

Two steps to find your product



STEP 1
Choose main group



STEP 2
Choose list number

Indexes

Search by product name or list number.



Product type index



Eaton list number index

Legend

QPC = Quantity Per Carton

1P = 1-pole (SP)

1P+N = 1-pole + switched neutral (SPSN)

2P = 2-pole (DP)

3P = 3-pole (TP)

4P = 4-pole (FP)

NO = Normally open

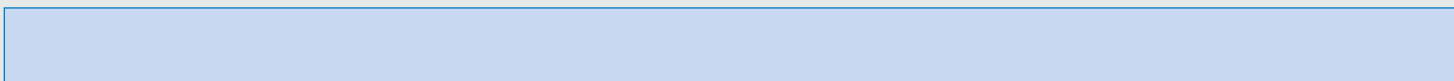
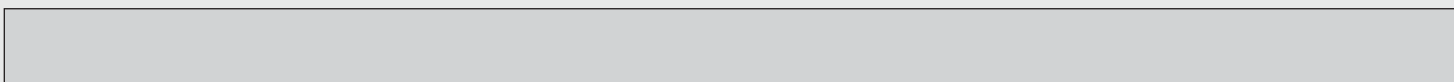
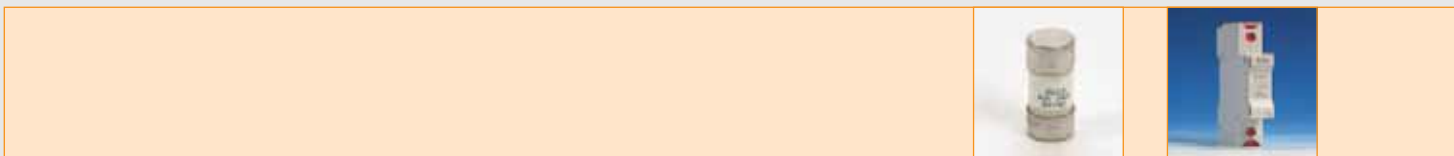
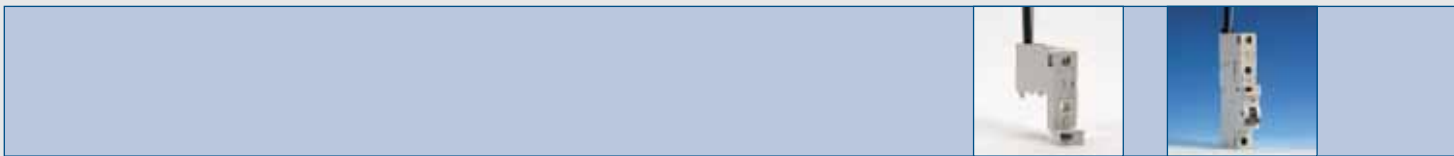
NC = Normally closed

Function of coloured text bars:

Products

Accessories

Technical data, drawings & specifications



General characteristics, Products	<ul style="list-style-type: none"> • The feature packed Eaton MCB 4 • The feature packed Eaton RCBO 5 • The feature packed Eaton RCCB 5 • The feature packed Eaton Command Control products 6 	
Miniature Circuit Breakers, 6 - 15 kA	<ul style="list-style-type: none"> • MCBs - 6 kA, trip type B, C, D 7 • MCBs - 10 kA, trip type B, C, D 13 • MCBs - 15 kA, trip type B, C 19 	<ul style="list-style-type: none"> 6 kA 10 kA 15 kA
Residual Current Operated Circuit Breakers - RCBO	<ul style="list-style-type: none"> • RCBOs - Standard Ready Assembled, 1P, trip type C 21 • RCBOs - Field Fittable Residual Current units 22 	
Residual Current Operated Circuit Breakers - RCCB	<ul style="list-style-type: none"> • RCCBs - type 2P 23 • RCCBs - type 4P 23 	
Accessories MCBs, RCBOs & RCCBs	<ul style="list-style-type: none"> • Comb busbars, Padlocking devices & Terminal shrouds 24 • Auxiliary and Alarm contacts, Shunt trips & Under Voltage Releases ... 25 • Rear connection terminal, Terminal screw shield & Terminal Shroud ... 26 	
Command Control products	<ul style="list-style-type: none"> • Analogue & digital time switches 27 • Contactors 28 • Impulse switch relays & Time delay relays 28 • Switch-disconnectors & Terminal blocks 28 	
Fuse carriers & fuses	<ul style="list-style-type: none"> • Fuse carriers & spare fuses, type HRC 29 	
MCB pan assemblies	<ul style="list-style-type: none"> • MCB pan assemblies, interiors 30 • MCB pan assemblies, incoming devices 31 	
Technical details	<ul style="list-style-type: none"> • Dimensional drawings and technical characteristics 32 	
Indexes	<ul style="list-style-type: none"> • Product type index 41 • Eaton list number index 42 	



Including MCBs, RCBOs, RCCBs & Command Control products

This chapter describes general characteristics of Eaton's technologically advanced range of MCBs, RCBOs, RCCBs & Command Control products. Eaton circuit breakers incorporate many unique features of benefit to all of our customers.

➔ See page 32 for the technical details of Eaton Circuit Breakers.

The feature packed Eaton MCB

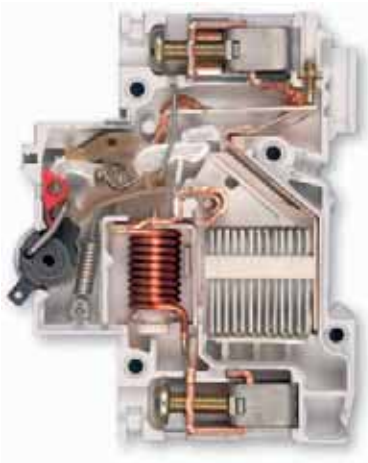
The Eaton MCB is a high performance current limiting device with the ability to disconnect short circuits of up to 15 kA. The range is available with trip types B, C, and D, for 1P, 1P+N, 2P, 3P & 4P configurations.

Technical characteristics

- Eaton MCBs can be DIN-rail mounted and connected with comb busbar.
- MCBs, RCBO's and RCCBs have positive contact indication.
- The MCBs are suitable for use with Eaton distribution boards. In addition MCBs are suitable for a wide range of panel builders applications.
- On 1P+N the switched neutral is unprotected.
- 1P+N MCBs are fitted with neutral contacts which make first and break last.
- They are suitable for use on dc systems from 24 V to 120 V.
Fault level at 24 V = 6 kA.
at 120 V = 4 kA.
- The MCBs are calibrated to 40 °C.
- MCBs can be supplied with 50 °C ambient calibration. To order insert 'X' at the end of the MCB list number e.g.: - MCH 116X.

Standards

- Eaton MCBs are rated at 6 kA & 10 kA I_{cn} to IEC 60898 & IEC 60947-2, trip types B, C & D.
- Eaton MCBs are rated at 15 kA I_{cn} to IEC 60947-2, trip types B & C.
- Eaton MCBs comply with Lloyds Register of Shipping.



1. Any 1P or 1P+N MCBs can be factory or site fitted with an RCBO pod providing hundreds of possible combinations allowing you even more flexibility.
2. Magnetic type characteristics to IEC 60898, trip types B, C, D for wide choice of applications.
3. Foolproof positive contact indication gives you the assurance of isolation function.
4. Breaking capacities of up to 10 kA (IEC 60898) and 15 kA (IEC 60947-2) allow increased installation opportunities.
5. Five different pole configurations (1P, 1P+N, 2P, 3P & 4P) and 14 current ratings (1, 2, 4, 6, 8, 10, 13, 16, 20, 25, 32, 40, 50, 63 A) for increased flexibility.
6. Trip free mechanism prevents MCBs from being held 'ON'.
7. Optional padlock for positive locking 'ON' or 'OFF'.
8. High performance current limiting design for safer installations.
9. Optional screw and terminal shields for full shrouding of MCBs
10. Generous, wire-in, wire-out, box type terminals for cables up to 25 mm², and fork type comb busbar facilities on line and load side for panel building installations.
11. Terminals clamp cable and fork type comb busbar simultaneously.
12. Mounting on standard 35 mm DIN-rail to BS5584/EN50022 for individual and panel building installations.
13. Finger protected combination head screws to increase safety and allow easier installation.
14. Optional rear connectors to allow cables up to 50 mm² to be terminated where space is limited.
15. Thermally calibrated to 40 °C with 50 °C option to cover a wider range of ambient temperatures.



Eaton MCB with KEMA approval

The Eaton Miniature Circuit Breakers with 6 kA and 10 kA are certified by KEMA and carry the KEMA-KEUR mark.

This KEMA-certification mark ensures product compliance with the total standard via third party witnessing of tests by globally recognised independent certification organisation.

KEMA is a highly recognised, independent international organisation that offers certification and inspection facilities for equipment in many industries. The KEMA-KEUR mark is the highest certification an electrical product can receive from KEMA. Eaton's IEC 60898 Miniature Circuit Breakers are KEMA tested and verified.

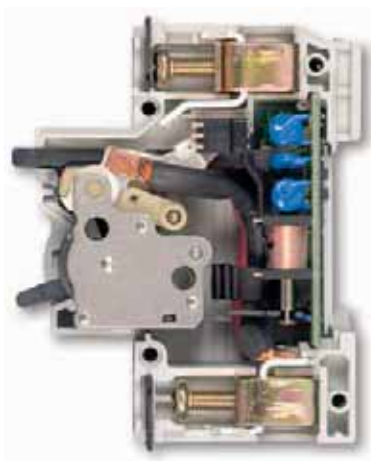
KEMA provides ongoing follow-up testing and inspections to ensure Eaton's Circuit Breakers continue to meet their exacting standards.

The feature packed Eaton RCBO



1. Earth fault sensitivity pod can be fitted to any standard 1P or 1P+N Eaton MCB.
2. Unique revolutionary design means that an RCBO within a 1P (18 mm) module can be achieved.
3. 1P module configuration allows a far greater number of devices to be fitted in a distribution board.
4. Use of the standard Eaton MCB means that there are hundreds of possible RCBO combinations providing an incredible choice.
5. Standard features of the MCB are retained but with the added flexibility of earth fault protection.
6. Eaton RCBOs are suitable for use in any Eaton distribution boards or ideally suited to panel building applications.
7. Four choices of sensitivity to meet the requirements of any installation.
8. Time delay versions allow discrimination with appropriately selected downstream RCBO.
9. The Eaton RCBO complies with IEC 61009.
10. Eaton RCBOs have positive contact indication.
11. Earth fault protection is maintained even if the neutral supply is lost.
12. Versions suitable for use on 110 V and 110 V centre tapped earth (CTE) 50/60 Hz systems.

The feature packed Eaton RCCB



1. The Eaton RCCB complies with IEC 61008.
2. Generous cable capacities of up to 50 mm².
3. All 2P units are suitable for 240 V 50/60 Hz applications.
4. All 4P units are suitable for 415 V 50/60 Hz applications and also have comb busbar facilities.
5. Eaton RCCBs are suitable for use in any Eaton distribution boards or ideally suited to panel building applications.
6. Four choices of sensitivity to meet the requirements of any installation.
7. Time delay versions allow discrimination with appropriately selected downstream RCCB.
8. Eaton RCCBs have positive contact indication.

Command control products complete the Eaton modular package and offer the opportunity to fulfill any application in either residential or industrial installations.

We offer following command control products:

1. Contactors
2. Pulse Relays
3. Time delay relay
4. Time switches



1. Contactors, complying with IEC 60947-4-1

- Fulfilling any application in general heating lighting applications
- Full range availability:
 - Ratings from 16 to 63 A.
 - Pole configurations 1P, 2P, 3P & 4P.
- Spacers available to extend lifetime (it is advised to use 1 spacer between every 2 contactors installed).



2. Impulse relays, complying with IEC 60669

- Reduce wiring cost by applying Eaton impulse relays.
- Significant cost advantages at any lighting control application using two or more switch locations especially where switches are remotely positioned.
- Eaton impulse switches are bi-stable.
- Relays available in 16 A (AC1) ratings, both offering NC and NO contacts for flexibility.



3. Time delay relay, rated 16 A

- Reduce electricity cost by decreasing the consumption of energy for lighting. The time delay relays are "OFF" delayed and especially suitable for staircase applications.
- Eaton time delay relays offer flexible time adjustment, from 30 seconds to 15 minutes.



4. Time switches

- Broad program offers right solution.
- Program comprises analogue and digital.
 - Analogue timers are available in both non quartz synchronised and quartz-versions.
 - Digital switches contain 1 and 2-channel versions. Devices are equipped with a changeover contact suitable for 16 A resistive and 2.5 A inductive loads.
- Analogue timers are flexible in use by choice of day and week programs.
- Digital timers are fully programmable in minimum programme times of one minute.
- Quartz controlled timers offer safe operation by means of a 150 hours running reserve to avoid time adjustment in case of power interruption.



Trip types B, C and D

The Eaton 6 kA MCB is a high performance current limiting device with the ability to disconnect short circuits. The range is available with trip types B, C, and D, for 1P, 1P+N, 2P, 3P & 4P configurations.

Eaton 6 kA MCBs are designed & tested in accordance with IEC 60898 & IEC 60947-2.
All 6 kA Eaton MCBs are certified by KEMA.

See page 24 for accessories.
See page 32 for the technical details of 6 kA MCB.



MBL116

MCBs - 6 kA, trip type B, 1P

- 3 to 5 x I_N (trip type B).
- IEC 60898 & IEC 60947-2.

Description	Rating	Trip type	Short circuit rating	Pole configuration	Width	QPC	Eaton list number
MCB	1 A	B	6 kA	1P	18 mm	12	MBL101
MCB	2 A	B	6 kA	1P	18 mm	12	MBL102
MCB	4 A	B	6 kA	1P	18 mm	12	MBL104
MCB	6 A	B	6 kA	1P	18 mm	12	MBL106
MCB	8 A	B	6 kA	1P	18 mm	12	MBL108
MCB	10 A	B	6 kA	1P	18 mm	12	MBL110
MCB	13 A	B	6 kA	1P	18 mm	12	MBL113
MCB	16 A	B	6 kA	1P	18 mm	12	MBL116
MCB	20 A	B	6 kA	1P	18 mm	12	MBL120
MCB	25 A	B	6 kA	1P	18 mm	12	MBL125
MCB	32 A	B	6 kA	1P	18 mm	12	MBL132
MCB	40 A	B	6 kA	1P	18 mm	12	MBL140
MCB	50 A	B	6 kA	1P	18 mm	12	MBL150
MCB	63 A	B	6 kA	1P	18 mm	12	MBL163



MBL116N

MCBs - 6 kA, trip type B, 1P+N

- 3 to 5 x I_N (trip type B).
- IEC 60898 & IEC 60947-2.

Description	Rating	Trip type	Short circuit rating	Pole configuration	Width	QPC	Eaton list number
MCB	1 A	B	6 kA	1P+N	36 mm	6	MBL101N
MCB	2 A	B	6 kA	1P+N	36 mm	6	MBL102N
MCB	4 A	B	6 kA	1P+N	36 mm	6	MBL104N
MCB	6 A	B	6 kA	1P+N	36 mm	6	MBL106N
MCB	8 A	B	6 kA	1P+N	36 mm	6	MBL108N
MCB	10 A	B	6 kA	1P+N	36 mm	6	MBL110N
MCB	13 A	B	6 kA	1P+N	36 mm	6	MBL113N
MCB	16 A	B	6 kA	1P+N	36 mm	6	MBL116N
MCB	20 A	B	6 kA	1P+N	36 mm	6	MBL120N
MCB	25 A	B	6 kA	1P+N	36 mm	6	MBL125N
MCB	32 A	B	6 kA	1P+N	36 mm	6	MBL132N
MCB	40 A	B	6 kA	1P+N	36 mm	6	MBL140N
MCB	50 A	B	6 kA	1P+N	36 mm	6	MBL150N
MCB	63 A	B	6 kA	1P+N	36 mm	6	MBL163N



MBL216

MCBs - 6 kA, trip type B, 2P

- 3 to 5 x I_N (trip type B).
- IEC 60898 & IEC 60947-2.

Description	Rating	Trip type	Short circuit rating	Pole configuration	Width	QPC	Eaton list number
MCB	1 A	B	6 kA	2P	36 mm	6	MBL201
MCB	2 A	B	6 kA	2P	36 mm	6	MBL202
MCB	4 A	B	6 kA	2P	36 mm	6	MBL204
MCB	6 A	B	6 kA	2P	36 mm	6	MBL206
MCB	8 A	B	6 kA	2P	36 mm	6	MBL208
MCB	10 A	B	6 kA	2P	36 mm	6	MBL210
MCB	13 A	B	6 kA	2P	36 mm	6	MBL213
MCB	16 A	B	6 kA	2P	36 mm	6	MBL216
MCB	20 A	B	6 kA	2P	36 mm	6	MBL220
MCB	25 A	B	6 kA	2P	36 mm	6	MBL225
MCB	32 A	B	6 kA	2P	36 mm	6	MBL232
MCB	40 A	B	6 kA	2P	36 mm	6	MBL240
MCB	50 A	B	6 kA	2P	36 mm	6	MBL250
MCB	63 A	B	6 kA	2P	36 mm	6	MBL263



MBL316

MCBs - 6 kA, trip type B, 3P

- 3 to 5 x I_N (trip type B).
- IEC 60898 & IEC 60947-2.

Description	Rating	Trip type	Short circuit rating	Pole configuration	Width	QPC	Eaton list number
MCB	1 A	B	6 kA	3P	54 mm	4	MBL301
MCB	2 A	B	6 kA	3P	54 mm	4	MBL302
MCB	4 A	B	6 kA	3P	54 mm	4	MBL304
MCB	6 A	B	6 kA	3P	54 mm	4	MBL306
MCB	8 A	B	6 kA	3P	54 mm	4	MBL308
MCB	10 A	B	6 kA	3P	54 mm	4	MBL310
MCB	13 A	B	6 kA	3P	54 mm	4	MBL313
MCB	16 A	B	6 kA	3P	54 mm	4	MBL316
MCB	20 A	B	6 kA	3P	54 mm	4	MBL320
MCB	25 A	B	6 kA	3P	54 mm	4	MBL325
MCB	32 A	B	6 kA	3P	54 mm	4	MBL332
MCB	40 A	B	6 kA	3P	54 mm	4	MBL340
MCB	50 A	B	6 kA	3P	54 mm	4	MBL350
MCB	63 A	B	6 kA	3P	54 mm	4	MBL363



MBL416

MCBs - 6 kA, trip type B, 4P

- 3 to 5 x I_N (trip type B).
- IEC 60898 & IEC 60947-2.

Description	Rating	Trip type	Short circuit rating	Pole configuration	Width	QPC	Eaton list number
MCB	1 A	B	6 kA	4P	72 mm	3	MBL401
MCB	2 A	B	6 kA	4P	72 mm	3	MBL402
MCB	4 A	B	6 kA	4P	72 mm	3	MBL404
MCB	6 A	B	6 kA	4P	72 mm	3	MBL406
MCB	8 A	B	6 kA	4P	72 mm	3	MBL408
MCB	10 A	B	6 kA	4P	72 mm	3	MBL410
MCB	13 A	B	6 kA	4P	72 mm	3	MBL413
MCB	16 A	B	6 kA	4P	72 mm	3	MBL416
MCB	20 A	B	6 kA	4P	72 mm	3	MBL420
MCB	25 A	B	6 kA	4P	72 mm	3	MBL425
MCB	32 A	B	6 kA	4P	72 mm	3	MBL432
MCB	40 A	B	6 kA	4P	72 mm	3	MBL440
MCB	50 A	B	6 kA	4P	72 mm	3	MBL450
MCB	63 A	B	6 kA	4P	72 mm	3	MBL463



MCL116

MCBs - 6 kA, trip type C, 1P

- 5 to 10 × I_N (trip type C).
- IEC 60898 & IEC 60947-2.

Description	Rating	Trip type	Short circuit rating	Pole configuration	Width	QPC	Eaton list number
MCB	1 A	C	6 kA	1P	18 mm	12	MCL101
MCB	2 A	C	6 kA	1P	18 mm	12	MCL102
MCB	4 A	C	6 kA	1P	18 mm	12	MCL104
MCB	6 A	C	6 kA	1P	18 mm	12	MCL106
MCB	8 A	C	6 kA	1P	18 mm	12	MCL108
MCB	10 A	C	6 kA	1P	18 mm	12	MCL110
MCB	13 A	C	6 kA	1P	18 mm	12	MCL113
MCB	16 A	C	6 kA	1P	18 mm	12	MCL116
MCB	20 A	C	6 kA	1P	18 mm	12	MCL120
MCB	25 A	C	6 kA	1P	18 mm	12	MCL125
MCB	32 A	C	6 kA	1P	18 mm	12	MCL132
MCB	40 A	C	6 kA	1P	18 mm	12	MCL140
MCB	50 A	C	6 kA	1P	18 mm	12	MCL150
MCB	63 A	C	6 kA	1P	18 mm	12	MCL163



MCL116N

MCBs - 6 kA, trip type C, 1P+N

- 5 to 10 × I_N (trip type C).
- IEC 60898 & IEC 60947-2.

Description	Rating	Trip type	Short circuit rating	Pole configuration	Width	QPC	Eaton list number
MCB	1 A	C	6 kA	1P+N	36 mm	6	MCL101N
MCB	2 A	C	6 kA	1P+N	36 mm	6	MCL102N
MCB	4 A	C	6 kA	1P+N	36 mm	6	MCL104N
MCB	6 A	C	6 kA	1P+N	36 mm	6	MCL106N
MCB	8 A	C	6 kA	1P+N	36 mm	6	MCL108N
MCB	10 A	C	6 kA	1P+N	36 mm	6	MCL110N
MCB	13 A	C	6 kA	1P+N	36 mm	6	MCL113N
MCB	16 A	C	6 kA	1P+N	36 mm	6	MCL116N
MCB	20 A	C	6 kA	1P+N	36 mm	6	MCL120N
MCB	25 A	C	6 kA	1P+N	36 mm	6	MCL125N
MCB	32 A	C	6 kA	1P+N	36 mm	6	MCL132N
MCB	40 A	C	6 kA	1P+N	36 mm	6	MCL140N
MCB	50 A	C	6 kA	1P+N	36 mm	6	MCL150N
MCB	63 A	C	6 kA	1P+N	36 mm	6	MCL163N



MCL216

MCBs - 6 kA, trip type C, 2P

- 5 to 10 × I_N (trip type C).
- IEC 60898 & IEC 60947-2.

Description	Rating	Trip type	Short circuit rating	Pole configuration	Width	QPC	Eaton list number
MCB	1 A	C	6 kA	2P	36 mm	6	MCL201
MCB	2 A	C	6 kA	2P	36 mm	6	MCL202
MCB	4 A	C	6 kA	2P	36 mm	6	MCL204
MCB	6 A	C	6 kA	2P	36 mm	6	MCL206
MCB	8 A	C	6 kA	2P	36 mm	6	MCL208
MCB	10 A	C	6 kA	2P	36 mm	6	MCL210
MCB	13 A	C	6 kA	2P	36 mm	6	MCL213
MCB	16 A	C	6 kA	2P	36 mm	6	MCL216
MCB	20 A	C	6 kA	2P	36 mm	6	MCL220
MCB	25 A	C	6 kA	2P	36 mm	6	MCL225
MCB	32 A	C	6 kA	2P	36 mm	6	MCL232
MCB	40 A	C	6 kA	2P	36 mm	6	MCL240
MCB	50 A	C	6 kA	2P	36 mm	6	MCL250
MCB	63 A	C	6 kA	2P	36 mm	6	MCL263



MCL316

MCBs - 6 kA, trip type C, 3P

- 5 to 10 x I_N (trip type C).
- IEC 60898 & IEC 60947-2.

Description	Rating	Trip type	Short circuit rating	Pole configuration	Width	QPC	Eaton list number
MCB	1 A	C	6 kA	2P	54 mm	4	MCL301
MCB	2 A	C	6 kA	3P	54 mm	4	MCL302
MCB	4 A	C	6 kA	3P	54 mm	4	MCL304
MCB	6 A	C	6 kA	3P	54 mm	4	MCL306
MCB	8 A	C	6 kA	3P	54 mm	4	MCL308
MCB	10 A	C	6 kA	3P	54 mm	4	MCL310
MCB	13 A	C	6 kA	3P	54 mm	4	MCL313
MCB	16 A	C	6 kA	3P	54 mm	4	MCL316
MCB	20 A	C	6 kA	3P	54 mm	4	MCL320
MCB	25 A	C	6 kA	3P	54 mm	4	MCL325
MCB	32 A	C	6 kA	3P	54 mm	4	MCL332
MCB	40 A	C	6 kA	3P	54 mm	4	MCL340
MCB	50 A	C	6 kA	3P	54 mm	4	MCL350
MCB	63 A	C	6 kA	3P	54 mm	4	MCL363



MCL416

MCBs - 6 kA, trip type C, 4P

- 5 to 10 x I_N (trip type C).
- IEC 60898 & IEC 60947-2.

Description	Rating	Trip type	Short circuit rating	Pole configuration	Width	QPC	Eaton list number
MCB	1 A	C	6 kA	4P	72 mm	3	MCL401
MCB	2 A	C	6 kA	4P	72 mm	3	MCL402
MCB	4 A	C	6 kA	4P	72 mm	3	MCL404
MCB	6 A	C	6 kA	4P	72 mm	3	MCL406
MCB	8 A	C	6 kA	4P	72 mm	3	MCL408
MCB	10 A	C	6 kA	4P	72 mm	3	MCL410
MCB	13 A	C	6 kA	4P	72 mm	3	MCL413
MCB	16 A	C	6 kA	4P	72 mm	3	MCL416
MCB	20 A	C	6 kA	4P	72 mm	3	MCL420
MCB	25 A	C	6 kA	4P	72 mm	3	MCL425
MCB	32 A	C	6 kA	4P	72 mm	3	MCL432
MCB	40 A	C	6 kA	4P	72 mm	3	MCL440
MCB	50 A	C	6 kA	4P	72 mm	3	MCL450
MCB	63 A	C	6 kA	4P	72 mm	3	MCL463



MDL116

MCBs - 6 kA, trip type D, 1P

- 10 to 20 x I_N (trip type D).
- IEC 60898 & IEC 60947-2.

Description	Rating	Trip type	Short circuit rating	Pole configuration	Width	QPC	Eaton list number
MCB	1 A	D	6 kA	1P	18 mm	12	MDL101
MCB	2 A	D	6 kA	1P	18 mm	12	MDL102
MCB	4 A	D	6 kA	1P	18 mm	12	MDL104
MCB	6 A	D	6 kA	1P	18 mm	12	MDL106
MCB	8 A	D	6 kA	1P	18 mm	12	MDL108
MCB	10 A	D	6 kA	1P	18 mm	12	MDL110
MCB	13 A	D	6 kA	1P	18 mm	12	MDL113
MCB	16 A	D	6 kA	1P	18 mm	12	MDL116
MCB	20 A	D	6 kA	1P	18 mm	12	MDL120
MCB	25 A	D	6 kA	1P	18 mm	12	MDL125
MCB	32 A	D	6 kA	1P	18 mm	12	MDL132
MCB	40 A	D	6 kA	1P	18 mm	12	MDL140
MCB	50 A	D	6 kA	1P	18 mm	12	MDL150
MCB	63 A	D	6 kA	1P	18 mm	12	MDL163



MDL116N

MCBs - 6 kA, trip type D, 1P+N

- 10 to 20 x I_N (trip type D).
- IEC 60898 & IEC 60947-2.

Description	Rating	Trip type	Short circuit rating	Pole configuration	Width	QPC	Eaton list number
MCB	1 A	D	6 kA	1P+N	36 mm	6	MDL101N
MCB	2 A	D	6 kA	1P+N	36 mm	6	MDL102N
MCB	4 A	D	6 kA	1P+N	36 mm	6	MDL104N
MCB	6 A	D	6 kA	1P+N	36 mm	6	MDL106N
MCB	8 A	D	6 kA	1P+N	36 mm	6	MDL108N
MCB	10 A	D	6 kA	1P+N	36 mm	6	MDL110N
MCB	13 A	D	6 kA	1P+N	36 mm	6	MDL113N
MCB	16 A	D	6 kA	1P+N	36 mm	6	MDL116N
MCB	20 A	D	6 kA	1P+N	36 mm	6	MDL120N
MCB	25 A	D	6 kA	1P+N	36 mm	6	MDL125N
MCB	32 A	D	6 kA	1P+N	36 mm	6	MDL132N
MCB	40 A	D	6 kA	1P+N	36 mm	6	MDL140N
MCB	50 A	D	6 kA	1P+N	36 mm	6	MDL150N
MCB	63 A	D	6 kA	1P+N	36 mm	6	MDL163N



MDL216

MCBs - 6 kA, trip type D, 2P

- 10 to 20 x I_N (trip type D).
- IEC 60898 & IEC 60947-2.

Description	Rating	Trip type	Short circuit rating	Pole configuration	Width	QPC	Eaton list number
MCB	1 A	D	6 kA	2P	36 mm	6	MDL201
MCB	2 A	D	6 kA	2P	36 mm	6	MDL202
MCB	4 A	D	6 kA	2P	36 mm	6	MDL204
MCB	6 A	D	6 kA	2P	36 mm	6	MDL206
MCB	8 A	D	6 kA	2P	36 mm	6	MDL208
MCB	10 A	D	6 kA	2P	36 mm	6	MDL210
MCB	13 A	D	6 kA	2P	36 mm	6	MDL213
MCB	16 A	D	6 kA	2P	36 mm	6	MDL216
MCB	20 A	D	6 kA	2P	36 mm	6	MDL220
MCB	25 A	D	6 kA	2P	36 mm	6	MDL225
MCB	32 A	D	6 kA	2P	36 mm	6	MDL232
MCB	40 A	D	6 kA	2P	36 mm	6	MDL240
MCB	50 A	D	6 kA	2P	36 mm	6	MDL250
MCB	63 A	D	6 kA	2P	36 mm	6	MDL263



MDL316

MCBs - 6 kA, trip type D, 3P

- 10 to 20 x I_N (trip type D).
- IEC 60898 & IEC 60947-2.

Description	Rating	Trip type	Short circuit rating	Pole configuration	Width	QPC	Eaton list number
MCB	1 A	D	6 kA	3P	54 mm	4	MDL301
MCB	2 A	D	6 kA	3P	54 mm	4	MDL302
MCB	4 A	D	6 kA	3P	54 mm	4	MDL304
MCB	6 A	D	6 kA	3P	54 mm	4	MDL306
MCB	8 A	D	6 kA	3P	54 mm	4	MDL308
MCB	10 A	D	6 kA	3P	54 mm	4	MDL310
MCB	13 A	D	6 kA	3P	54 mm	4	MDL313
MCB	16 A	D	6 kA	3P	54 mm	4	MDL316
MCB	20 A	D	6 kA	3P	54 mm	4	MDL320
MCB	25 A	D	6 kA	3P	54 mm	4	MDL325
MCB	32 A	D	6 kA	3P	54 mm	4	MDL332
MCB	40 A	D	6 kA	3P	54 mm	4	MDL340
MCB	50 A	D	6 kA	3P	54 mm	4	MDL350
MCB	63 A	D	6 kA	3P	54 mm	4	MDL363



MDL416

MCBs - 6 kA, trip type D, 4P

- 10 to 20 x I_N (trip type D).
- IEC 60898 & IEC 60947-2.

Description	Rating	Trip type	Short circuit rating	Pole configuration	Width	QPC	Eaton list number
MCB	1 A	D	6 kA	4P	72 mm	3	MDL401
MCB	2 A	D	6 kA	4P	72 mm	3	MDL402
MCB	4 A	D	6 kA	4P	72 mm	3	MDL404
MCB	6 A	D	6 kA	4P	72 mm	3	MDL406
MCB	8 A	D	6 kA	4P	72 mm	3	MDL408
MCB	10 A	D	6 kA	4P	72 mm	3	MDL410
MCB	13 A	D	6 kA	4P	72 mm	3	MDL413
MCB	16 A	D	6 kA	4P	72 mm	3	MDL416
MCB	20 A	D	6 kA	4P	72 mm	3	MDL420
MCB	25 A	D	6 kA	4P	72 mm	3	MDL425
MCB	32 A	D	6 kA	4P	72 mm	3	MDL432
MCB	40 A	D	6 kA	4P	72 mm	3	MDL440
MCB	50 A	D	6 kA	4P	72 mm	3	MDL450
MCB	63 A	D	6 kA	4P	72 mm	3	MDL463

6 kA

Miniature Circuit Breakers



Trip types B, C and D

The Eaton 10 kA MCB is a high performance current limiting device with the ability to disconnect short circuits. The range is available with trip types B, C, and D, for 1P, 1P+N, 2P, 3P & 4P configurations.

Eaton 10 kA MCBs are designed & tested in accordance with IEC 60898 & IEC 60947-2. All 10 kA Eaton MCBs are certified by KEMA.

See page 24 for accessories.
See page 32 for the technical details of 10 kA MCB.



MBH116

MCBs - 10 kA, trip type B, 1P

- 3 to 5 x I_N (trip type B).
- IEC 60898 & IEC 60947-2.

Description	Rating	Trip type	Short circuit rating	Pole configuration	Width	QPC	Eaton list number
MCB	1 A	B	10 kA	1P	18 mm	12	MBH101
MCB	2 A	B	10 kA	1P	18 mm	12	MBH102
MCB	4 A	B	10 kA	1P	18 mm	12	MBH104
MCB	6 A	B	10 kA	1P	18 mm	12	MBH106
MCB	8 A	B	10 kA	1P	18 mm	12	MBH108
MCB	10 A	B	10 kA	1P	18 mm	12	MBH110
MCB	13 A	B	10 kA	1P	18 mm	12	MBH113
MCB	16 A	B	10 kA	1P	18 mm	12	MBH116
MCB	20 A	B	10 kA	1P	18 mm	12	MBH120
MCB	25 A	B	10 kA	1P	18 mm	12	MBH125
MCB	32 A	B	10 kA	1P	18 mm	12	MBH132
MCB	40 A	B	10 kA	1P	18 mm	12	MBH140
MCB	50 A	B	10 kA	1P	18 mm	12	MBH150
MCB	63 A	B	10 kA	1P	18 mm	12	MBH163



MBH116N

MCBs - 10 kA, trip type B, 1P+N

- 3 to 5 x I_N (trip type B).
- IEC 60898 & IEC 60947-2.

Description	Rating	Trip type	Short circuit rating	Pole configuration	Width	QPC	Eaton list number
MCB	1 A	B	10 kA	1P+N	36 mm	6	MBH101N
MCB	2 A	B	10 kA	1P+N	36 mm	6	MBH102N
MCB	4 A	B	10 kA	1P+N	36 mm	6	MBH104N
MCB	6 A	B	10 kA	1P+N	36 mm	6	MBH106N
MCB	8 A	B	10 kA	1P+N	36 mm	6	MBH108N
MCB	10 A	B	10 kA	1P+N	36 mm	6	MBH110N
MCB	13 A	B	10 kA	1P+N	36 mm	6	MBH113N
MCB	16 A	B	10 kA	1P+N	36 mm	6	MBH116N
MCB	20 A	B	10 kA	1P+N	36 mm	6	MBH120N
MCB	25 A	B	10 kA	1P+N	36 mm	6	MBH125N
MCB	32 A	B	10 kA	1P+N	36 mm	6	MBH132N
MCB	40 A	B	10 kA	1P+N	36 mm	6	MBH140N
MCB	50 A	B	10 kA	1P+N	36 mm	6	MBH150N
MCB	63 A	B	10 kA	1P+N	36 mm	6	MBH163N



MBH216

MCBs - 10 kA, trip type B, 2P

- 3 to 5 x I_N (trip type B).
- IEC 60898 & IEC 60947-2.

Description	Rating	Trip type	Short circuit rating	Pole configuration	Width	QPC	Eaton list number
MCB	1 A	B	10 kA	2P	36 mm	6	MBH201
MCB	2 A	B	10 kA	2P	36 mm	6	MBH202
MCB	4 A	B	10 kA	2P	36 mm	6	MBH204
MCB	6 A	B	10 kA	2P	36 mm	6	MBH206
MCB	8 A	B	10 kA	2P	36 mm	6	MBH208
MCB	10 A	B	10 kA	2P	36 mm	6	MBH210
MCB	13 A	B	10 kA	2P	36 mm	6	MBH213
MCB	16 A	B	10 kA	2P	36 mm	6	MBH216
MCB	20 A	B	10 kA	2P	36 mm	6	MBH220
MCB	25 A	B	10 kA	2P	36 mm	6	MBH225
MCB	32 A	B	10 kA	2P	36 mm	6	MBH232
MCB	40 A	B	10 kA	2P	36 mm	6	MBH240
MCB	50 A	B	10 kA	2P	36 mm	6	MBH250
MCB	63 A	B	10 kA	2P	36 mm	6	MBH263



MBH316

MCBs - 10 kA, trip type B, 3P

- 3 to 5 x I_N (trip type B).
- IEC 60898 & IEC 60947-2.

Description	Rating	Trip type	Short circuit rating	Pole configuration	Width	QPC	Eaton list number
MCB	1 A	B	10 kA	3P	54 mm	4	MBH301
MCB	2 A	B	10 kA	3P	54 mm	4	MBH302
MCB	4 A	B	10 kA	3P	54 mm	4	MBH304
MCB	6 A	B	10 kA	3P	54 mm	4	MBH306
MCB	8 A	B	10 kA	3P	54 mm	4	MBH308
MCB	10 A	B	10 kA	3P	54 mm	4	MBH310
MCB	13 A	B	10 kA	3P	54 mm	4	MBH313
MCB	16 A	B	10 kA	3P	54 mm	4	MBH316
MCB	20 A	B	10 kA	3P	54 mm	4	MBH320
MCB	25 A	B	10 kA	3P	54 mm	4	MBH325
MCB	32 A	B	10 kA	3P	54 mm	4	MBH332
MCB	40 A	B	10 kA	3P	54 mm	4	MBH340
MCB	50 A	B	10 kA	3P	54 mm	4	MBH350
MCB	63 A	B	10 kA	3P	54 mm	4	MBH363



MBH416

MCBs - 10 kA, trip type B, 4P

- 3 to 5 x I_N (trip type B).
- IEC 60898 & IEC 60947-2.

Description	Rating	Trip type	Short circuit rating	Pole configuration	Width	QPC	Eaton list number
MCB	1 A	B	10 kA	4P	72 mm	3	MBH401
MCB	2 A	B	10 kA	4P	72 mm	3	MBH402
MCB	4 A	B	10 kA	4P	72 mm	3	MBH404
MCB	6 A	B	10 kA	4P	72 mm	3	MBH406
MCB	8 A	B	10 kA	4P	72 mm	3	MBH408
MCB	10 A	B	10 kA	4P	72 mm	3	MBH410
MCB	13 A	B	10 kA	4P	72 mm	3	MBH413
MCB	16 A	B	10 kA	4P	72 mm	3	MBH416
MCB	20 A	B	10 kA	4P	72 mm	3	MBH420
MCB	25 A	B	10 kA	4P	72 mm	3	MBH425
MCB	32 A	B	10 kA	4P	72 mm	3	MBH432
MCB	40 A	B	10 kA	4P	72 mm	3	MBH440
MCB	50 A	B	10 kA	4P	72 mm	3	MBH450
MCB	63 A	B	10 kA	4P	72 mm	3	MBH463



MCH116

MCBs - 10 kA, trip type C, 1P

- 5 to 10 x I_N (trip type C).
- IEC 60898 & IEC 60947-2.

Description	Rating	Trip type	Short circuit rating	Pole configuration	Width	QPC	Eaton list number
MCB	1 A	C	10 kA	1P	18 mm	12	MCH101
MCB	2 A	C	10 kA	1P	18 mm	12	MCH102
MCB	4 A	C	10 kA	1P	18 mm	12	MCH104
MCB	6 A	C	10 kA	1P	18 mm	12	MCH106
MCB	8 A	C	10 kA	1P	18 mm	12	MCH108
MCB	10 A	C	10 kA	1P	18 mm	12	MCH110
MCB	13 A	C	10 kA	1P	18 mm	12	MCH113
MCB	16 A	C	10 kA	1P	18 mm	12	MCH116
MCB	20 A	C	10 kA	1P	18 mm	12	MCH120
MCB	25 A	C	10 kA	1P	18 mm	12	MCH125
MCB	32 A	C	10 kA	1P	18 mm	12	MCH132
MCB	40 A	C	10 kA	1P	18 mm	12	MCH140
MCB	50 A	C	10 kA	1P	18 mm	12	MCH150
MCB	63 A	C	10 kA	1P	18 mm	12	MCH163



MCH116N

MCBs - 10 kA, trip type C, 1P+N

- 5 to 10 x I_N (trip type C).
- IEC 60898 & IEC 60947-2.

Description	Rating	Trip type	Short circuit rating	Pole configuration	Width	QPC	Eaton list number
MCB	1 A	C	10 kA	1P+N	36 mm	6	MCH101N
MCB	2 A	C	10 kA	1P+N	36 mm	6	MCH102N
MCB	4 A	C	10 kA	1P+N	36 mm	6	MCH104N
MCB	6 A	C	10 kA	1P+N	36 mm	6	MCH106N
MCB	8 A	C	10 kA	1P+N	36 mm	6	MCH108N
MCB	10 A	C	10 kA	1P+N	36 mm	6	MCH110N
MCB	13 A	C	10 kA	1P+N	36 mm	6	MCH113N
MCB	16 A	C	10 kA	1P+N	36 mm	6	MCH116N
MCB	20 A	C	10 kA	1P+N	36 mm	6	MCH120N
MCB	25 A	C	10 kA	1P+N	36 mm	6	MCH125N
MCB	32 A	C	10 kA	1P+N	36 mm	6	MCH132N
MCB	40 A	C	10 kA	1P+N	36 mm	6	MCH140N
MCB	50 A	C	10 kA	1P+N	36 mm	6	MCH150N
MCB	63 A	C	10 kA	1P+N	36 mm	6	MCH163N



MCH216

MCBs - 10 kA, trip type C, 2P

- 5 to 10 x I_N (trip type C).
- IEC 60898 & IEC 60947-2.

Description	Rating	Trip type	Short circuit rating	Pole configuration	Width	QPC	Eaton list number
MCB	1 A	C	10 kA	2P	36 mm	6	MCH201
MCB	2 A	C	10 kA	2P	36 mm	6	MCH202
MCB	4 A	C	10 kA	2P	36 mm	6	MCH204
MCB	6 A	C	10 kA	2P	36 mm	6	MCH206
MCB	8 A	C	10 kA	2P	36 mm	6	MCH208
MCB	10 A	C	10 kA	2P	36 mm	6	MCH210
MCB	13 A	C	10 kA	2P	36 mm	6	MCH213
MCB	16 A	C	10 kA	2P	36 mm	6	MCH216
MCB	20 A	C	10 kA	2P	36 mm	6	MCH220
MCB	25 A	C	10 kA	2P	36 mm	6	MCH225
MCB	32 A	C	10 kA	2P	36 mm	6	MCH232
MCB	40 A	C	10 kA	2P	36 mm	6	MCH240
MCB	50 A	C	10 kA	2P	36 mm	6	MCH250
MCB	63 A	C	10 kA	2P	36 mm	6	MCH263



MCH316

MCBs - 10 kA, trip type C, 3P

- 5 to 10 x I_N (trip type C).
- IEC 60898 & IEC 60947-2.

Description	Rating	Trip type	Short circuit rating	Pole configuration	Width	QPC	Eaton list number
MCB	1 A	C	10 kA	3P	54 mm	4	MCH301
MCB	2 A	C	10 kA	3P	54 mm	4	MCH302
MCB	4 A	C	10 kA	3P	54 mm	4	MCH304
MCB	6 A	C	10 kA	3P	54 mm	4	MCH306
MCB	8 A	C	10 kA	3P	54 mm	4	MCH308
MCB	10 A	C	10 kA	3P	54 mm	4	MCH310
MCB	13 A	C	10 kA	3P	54 mm	4	MCH313
MCB	16 A	C	10 kA	3P	54 mm	4	MCH316
MCB	20 A	C	10 kA	3P	54 mm	4	MCH320
MCB	25 A	C	10 kA	3P	54 mm	4	MCH325
MCB	32 A	C	10 kA	3P	54 mm	4	MCH332
MCB	40 A	C	10 kA	3P	54 mm	4	MCH340
MCB	50 A	C	10 kA	3P	54 mm	4	MCH350
MCB	63 A	C	10 kA	3P	54 mm	4	MCH363



MCH416

MCBs - 10 kA, trip type C, 4P

- 5 to 10 x I_N (trip type C).
- IEC 60898 & IEC 60947-2.

Description	Rating	Trip type	Short circuit rating	Pole configuration	Width	QPC	Eaton list number
MCB	1 A	C	10 kA	4P	72 mm	3	MCH401
MCB	2 A	C	10 kA	4P	72 mm	3	MCH402
MCB	4 A	C	10 kA	4P	72 mm	3	MCH404
MCB	6 A	C	10 kA	4P	72 mm	3	MCH406
MCB	8 A	C	10 kA	4P	72 mm	3	MCH408
MCB	10 A	C	10 kA	4P	72 mm	3	MCH410
MCB	13 A	C	10 kA	4P	72 mm	3	MCH413
MCB	16 A	C	10 kA	4P	72 mm	3	MCH416
MCB	20 A	C	10 kA	4P	72 mm	3	MCH420
MCB	25 A	C	10 kA	4P	72 mm	3	MCH425
MCB	32 A	C	10 kA	4P	72 mm	3	MCH432
MCB	40 A	C	10 kA	4P	72 mm	3	MCH440
MCB	50 A	C	10 kA	4P	72 mm	3	MCH450
MCB	63 A	C	10 kA	4P	72 mm	3	MCH463



MDH116

MCBs - 10 kA, trip type D, 1P

- 10 to 20 x I_N (trip type D).
- IEC 60898 & IEC 60947-2.

Description	Rating	Trip type	Short circuit rating	Pole configuration	Width	QPC	Eaton list number
MCB	1 A	D	10 kA	1P	18 mm	12	MDH101
MCB	2 A	D	10 kA	1P	18 mm	12	MDH102
MCB	4 A	D	10 kA	1P	18 mm	12	MDH104
MCB	6 A	D	10 kA	1P	18 mm	12	MDH106
MCB	8 A	D	10 kA	1P	18 mm	12	MDH108
MCB	10 A	D	10 kA	1P	18 mm	12	MDH110
MCB	13 A	D	10 kA	1P	18 mm	12	MDH113
MCB	16 A	D	10 kA	1P	18 mm	12	MDH116
MCB	20 A	D	10 kA	1P	18 mm	12	MDH120
MCB	25 A	D	10 kA	1P	18 mm	12	MDH125
MCB	32 A	D	10 kA	1P	18 mm	12	MDH132



MDH116N

MCBs - 10 kA, trip type D, 1P+N

- 10 to 20 x I_N (trip type D).
- 60898 & IEC 60947-2.

Description	Rating	Trip type	Short circuit rating	Pole configuration	Width	QPC	Eaton list number
MCB	1 A	D	10 kA	1P+N	36 mm	6	MDH101N
MCB	2 A	D	10 kA	1P+N	36 mm	6	MDH102N
MCB	4 A	D	10 kA	1P+N	36 mm	6	MDH104N
MCB	6 A	D	10 kA	1P+N	36 mm	6	MDH106N
MCB	8 A	D	10 kA	1P+N	36 mm	6	MDH108N
MCB	10 A	D	10 kA	1P+N	36 mm	6	MDH110N
MCB	13 A	D	10 kA	1P+N	36 mm	6	MDH113N
MCB	16 A	D	10 kA	1P+N	36 mm	6	MDH116N
MCB	20 A	D	10 kA	1P+N	36 mm	6	MDH120N
MCB	25 A	D	10 kA	1P+N	36 mm	6	MDH125N
MCB	32 A	D	10 kA	1P+N	36 mm	6	MDH132N



MDH216

MCBs - 10 kA, trip type D, 2P

- 10 to 20 x I_N (trip type D).
- IEC 60898 & IEC 60947-2.

Description	Rating	Trip type	Short circuit rating	Pole configuration	Width	QPC	Eaton list number
MCB	1 A	D	10 kA	2P	36 mm	6	MDH201
MCB	2 A	D	10 kA	2P	36 mm	6	MDH202
MCB	4 A	D	10 kA	2P	36 mm	6	MDH204
MCB	6 A	D	10 kA	2P	36 mm	6	MDH206
MCB	8 A	D	10 kA	2P	36 mm	6	MDH208
MCB	10 A	D	10 kA	2P	36 mm	6	MDH210
MCB	13 A	D	10 kA	2P	36 mm	6	MDH213
MCB	16 A	D	10 kA	2P	36 mm	6	MDH216
MCB	20 A	D	10 kA	2P	36 mm	6	MDH220
MCB	25 A	D	10 kA	2P	36 mm	6	MDH225
MCB	32 A	D	10 kA	2P	36 mm	6	MDH232



MDH316

MCBs - 10 kA, trip type D, 3P

- 10 to 20 x I_N (trip type D).
- IEC 60898 & IEC 60947-2.

Description	Rating	Trip type	Short circuit rating	Pole configuration	Width	QPC	Eaton list number
MCB	1 A	D	10 kA	3P	54 mm	4	MDH301
MCB	2 A	D	10 kA	3P	54 mm	4	MDH302
MCB	4 A	D	10 kA	3P	54 mm	4	MDH304
MCB	6 A	D	10 kA	3P	54 mm	4	MDH306
MCB	8 A	D	10 kA	3P	54 mm	4	MDH308
MCB	10 A	D	10 kA	3P	54 mm	4	MDH310
MCB	13 A	D	10 kA	3P	54 mm	4	MDH313
MCB	16 A	D	10 kA	3P	54 mm	4	MDH316
MCB	20 A	D	10 kA	3P	54 mm	4	MDH320
MCB	25 A	D	10 kA	3P	54 mm	4	MDH325
MCB	32 A	D	10 kA	3P	54 mm	4	MDH332



MDH416

MCBs - 10 kA, trip type D, 4P

- 10 to 20 x I_N (trip type D).
- IEC 60898 & IEC 60947-2.

Description	Rating	Trip type	Short circuit rating	Pole configuration	Width	QPC	Eaton list number
MCB	1 A	D	10 kA	4P	72 mm	3	MDH401
MCB	2 A	D	10 kA	4P	72 mm	3	MDH402
MCB	4 A	D	10 kA	4P	72 mm	3	MDH404
MCB	6 A	D	10 kA	4P	72 mm	3	MDH406
MCB	8 A	D	10 kA	4P	72 mm	3	MDH408
MCB	10 A	D	10 kA	4P	72 mm	3	MDH410
MCB	13 A	D	10 kA	4P	72 mm	3	MDH413
MCB	16 A	D	10 kA	4P	72 mm	3	MDH416
MCB	20 A	D	10 kA	4P	72 mm	3	MDH420
MCB	25 A	D	10 kA	4P	72 mm	3	MDH425
MCB	32 A	D	10 kA	4P	72 mm	3	MDH432

10 kA

Miniature Circuit Breakers

Trip types B and C



The Eaton 15 kA MCB is a high performance current limiting device with the ability to disconnect short circuits. The range is available with trip types B, and C, for 1P, 2P and 3P configurations.

Eaton 15 kA MCBs are designed & tested in accordance with IEC 60947-2.



See page 24 for accessories.
See page 32 for the technical details of 15 kA MCB.



MBV116

MCBs - 15 kA, trip type B, 1P

- 3 to 5 x I_N (trip type B).
- I_{cu} rating to IEC 60947-2.

Description	Rating	Trip type	Short circuit rating	Pole configuration	Width	QPC	Eaton list number
MCB	6 A	B	15 kA	1P	18 mm	12	MBV106
MCB	10 A	B	15 kA	1P	18 mm	12	MBV110
MCB	16 A	B	15 kA	1P	18 mm	12	MBV116
MCB	20 A	B	15 kA	1P	18 mm	12	MBV120
MCB	25 A	B	15 kA	1P	18 mm	12	MBV125
MCB	32 A	B	15 kA	1P	18 mm	12	MBV132
MCB	40 A	B	15 kA	1P	18 mm	12	MBV140
MCB	50 A	B	15 kA	1P	18 mm	12	MBV150
MCB	63 A	B	15 kA	1P	18 mm	12	MBV163



MBV216

MCBs - 15 kA, trip type B, 2P

- 3 to 5 x I_N (trip type B).
- I_{cu} rating to IEC 60947-2.

Description	Rating	Trip type	Short circuit rating	Pole configuration	Width	QPC	Eaton list number
MCB	6 A	B	15 kA	2P	36 mm	6	MBV206
MCB	10 A	B	15 kA	2P	36 mm	6	MBV210
MCB	16 A	B	15 kA	2P	36 mm	6	MBV216
MCB	20 A	B	15 kA	2P	36 mm	6	MBV220
MCB	25 A	B	15 kA	2P	36 mm	6	MBV225
MCB	32 A	B	15 kA	2P	36 mm	6	MBV232
MCB	40 A	B	15 kA	2P	36 mm	6	MBV240
MCB	50 A	B	15 kA	2P	36 mm	6	MBV250
MCB	63 A	B	15 kA	2P	36 mm	6	MBV263



MBV316

MCBs - 15 kA, trip type B, 3P

- 3 to 5 x I_N (trip type B).
- I_{cu} rating to IEC 60947-2.

Description	Rating	Trip type	Short circuit rating	Pole configuration	Width	QPC	Eaton list number
MCB	6 A	B	15 kA	3P	54 mm	4	MBV306
MCB	10 A	B	15 kA	3P	54 mm	4	MBV310
MCB	16 A	B	15 kA	3P	54 mm	4	MBV316
MCB	20 A	B	15 kA	3P	54 mm	4	MBV320
MCB	25 A	B	15 kA	3P	54 mm	4	MBV325
MCB	32 A	B	15 kA	3P	54 mm	4	MBV332
MCB	40 A	B	15 kA	3P	54 mm	4	MBV340
MCB	50 A	B	15 kA	3P	54 mm	4	MBV350
MCB	63 A	B	15 kA	3P	54 mm	4	MBV363



MCV116

MCBs - 15 kA, trip type C, 1P

- 5 to 10 x I_N (trip type C).
- I_{cu} rating to IEC 60947-2.

Description	Rating	Trip type	Short circuit rating	Pole configuration	Width	QPC	Eaton list number
MCB	6 A	C	15 kA	1P	18 mm	12	MCV106
MCB	10 A	C	15 kA	1P	18 mm	12	MCV110
MCB	16 A	C	15 kA	1P	18 mm	12	MCV116
MCB	20 A	C	15 kA	1P	18 mm	12	MCV120
MCB	25 A	C	15 kA	1P	18 mm	12	MCV125
MCB	32 A	C	15 kA	1P	18 mm	12	MCV132
MCB	40 A	C	15 kA	1P	18 mm	12	MCV140
MCB	50 A	C	15 kA	1P	18 mm	12	MCV150
MCB	63 A	C	15 kA	1P	18 mm	12	MCV163



MCV216

MCBs - 15 kA, trip type C, 2P

- 5 to 10 x I_N (trip type C).
- I_{cu} rating to IEC 60947-2.

Description	Rating	Trip type	Short circuit rating	Pole configuration	Width	QPC	Eaton list number
MCB	6 A	C	15 kA	2P	36 mm	6	MCV206
MCB	10 A	C	15 kA	2P	36 mm	6	MCV210
MCB	16 A	C	15 kA	2P	36 mm	6	MCV216
MCB	20 A	C	15 kA	2P	36 mm	6	MCV220
MCB	25 A	C	15 kA	2P	36 mm	6	MCV225
MCB	32 A	C	15 kA	2P	36 mm	6	MCV232
MCB	40 A	C	15 kA	2P	36 mm	6	MCV240
MCB	50 A	C	15 kA	2P	36 mm	6	MCV250
MCB	63 A	C	15 kA	2P	36 mm	6	MCV263



MCV316

MCBs - 15 kA, trip type C, 3P

- 5 to 10 x I_N (trip type C).
- I_{cu} rating to IEC 60947-2.

Description	Rating	Trip type	Short circuit rating	Pole configuration	Width	QPC	Eaton list number
MCB	6 A	C	15 kA	3P	54 mm	4	MCV306
MCB	10 A	C	15 kA	3P	54 mm	4	MCV310
MCB	16 A	C	15 kA	3P	54 mm	4	MCV316
MCB	20 A	C	15 kA	3P	54 mm	4	MCV320
MCB	25 A	C	15 kA	3P	54 mm	4	MCV325
MCB	32 A	C	15 kA	3P	54 mm	4	MCV332
MCB	40 A	C	15 kA	3P	54 mm	4	MCV340
MCB	50 A	C	15 kA	3P	54 mm	4	MCV350
MCB	63 A	C	15 kA	3P	54 mm	4	MCV363



With integral overload protection

Residual Current Operated Circuit Breakers with integral overcurrent protection in accordance to IEC 61009.

A RCBO is a MCB (Miniature Circuit Breaker) with the function of RCCB (Residual Current Circuit Breaker). For adding Earth Fault Protection to your MCB there are two options each complying with IEC 61009:

1. Choose from the standard ready assembled range of RCBOs incorporating type C MCBs.
2. Field fittable Residual Current (RC) Units. An RCBO can be assembled on site.

This provides two benefits: Previously installed Eaton 1P & 1P+N MCBs can be upgraded to include Residual Current Protection, also stock of 1P & 1P+N Eaton MCBs previously supplied can be upgraded to include earth fault protection.

Example:

A field fitted MR30 will convert any 1P or 1P+N MCB into an RCBO with 30 mA residual current sensitivity.

Technical characteristics

- To guarantee discrimination with downstream residual current devices any upstream residual current device should be time delayed. The time delay period is between 150 - 400 ms.
- The RCBO is capable of responding to the superimposition of components of current on the supply caused by the operation of equipment using rectified voltages in compliance with IEC 61009.
- Under loss of supply neutral conditions the residual current element of the device will continue to provide earth leakage protection. With these conditions and upon detection of an earth leakage current the RCBO will operate within its normal characteristics.
- High voltage suppression is incorporated and the unit is therefore ideal for use with supply equipment susceptible to such mains borne transients.



See page 24 for accessories.

See page 34 for the technical details of Eaton RCBO's.



MCH132R30

RCBOs - Standard Ready Assembled, 1P, trip type C

With integral overcurrent protection (ready assembled)

The table highlights examples of the more commonly required RCBO units incorporating type C Eaton MCBs.

The 15 kA Eaton Type B and C, 1P, MCBs can also be fitted with residual current protection. Due to the unique method of construction any Eaton 1P or 1P+N MCB can be fitted with residual current protection. A version of the residual current pod is available for use on 110 V 50/60 Hz systems.

Description	Rating	Sensitivity	QPC	Eaton list number
RCBO - Standard ready assembled	6 A	10 mA	1	MCH106R10
RCBO - Standard ready assembled	10 A	10 mA	1	MCH110R10
RCBO - Standard ready assembled	16 A	10 mA	1	MCH116R10
RCBO - Standard ready assembled	20 A	10 mA	1	MCH120R10
RCBO - Standard ready assembled	32 A	10 mA	1	MCH132R10
RCBO - Standard ready assembled	6 A	30 mA	1	MCH106R30
RCBO - Standard ready assembled	10 A	30 mA	1	MCH110R30
RCBO - Standard ready assembled	16 A	30 mA	1	MCH116R30
RCBO - Standard ready assembled	20 A	30 mA	1	MCH120R30
RCBO - Standard ready assembled	32 A	30 mA	1	MCH132R30
RCBO - Standard ready assembled	40 A	30 mA	1	MCH140R30



MR30

RCBOs - Field Fittable Residual Current units

Any standard 1P or 1P+N Eaton MCB, 6 kA, 10 kA and 15 kA, can be field fitted with a residual current unit to create an RCBO. To order simply select the required sensitivity and system voltage from the table below.

For standard applications either the 230 - 240 Vac or 110 Vac ranges are used.

For applications where 110 V centre-tapped power supplies are provided, additional high levels of safety can be achieved through use of a standard Eaton 2P, type B or type C MCB fitted with a 110 CTE type residual current unit.

Description	Voltage	Sensitivity	QPC	Eaton list number
Field fittable RC-units	230 - 240 Vac	30 mA	1	MR30
Field fittable RC-units	230 - 240 Vac	100 mA	1	MR100
Field fittable RC-units	Time delayed, 230 - 240 Vac	100 mA	1	MR100D
Field fittable RC-units	Time delayed, 230 - 240 Vac	300 mA	1	MR300D
Field fittable RC-units	110 Vac	30 mA	1	MR30/110
Field fittable RC-units	110 Vac	100 mA	1	MR100/110
Field fittable RC-units	Pod for 110 V CTE system	30 mA	1	MR30/110CTE
Field fittable RC-units	Pod for 110 V CTE system	100 mA	1	MR100/110CTE



Without integral overload protection

Residual Current Operated Circuit Breaker without integral overload protection.

Technical characteristics

- The 2P unit is capable of sensing DC components in the supply, in accordance with IEC 61008.
- All 2P units are suitable for 240 V 50/60 Hz applications.
- All 4P units are suitable for 415 V 50/60 Hz applications and also have comb busbar facilities.
- To guarantee discrimination with downstream residual current devices any upstream residual current device should be time delayed. The time delay period is between 150 - 400 ms.
- Under loss of supply neutral conditions the residual current element of the device will continue to provide earth leakage protection. With these conditions and upon detection of an earth leakage current the RCCB will operate within its normal characteristics.
- High voltage suppression is incorporated and the unit is therefore ideal for use with supply equipment susceptible to such mains borne transients.
- The Eaton RCCB units comply with IEC 61008.



See page 24 for accessories.

See page 35 for the technical details of Eaton RCCB's.



AM100HE

RCCBs - type 2P

Residual Current Operated Circuit Breaker without integral overload protection.

Description	Sensitivity	Rating	QPC	Eaton list number
RCCB	16 A	10 mA	1	AM16VHE
RCCB	25 A	30 mA	1	AM25HE
RCCB	40 A	30 mA	1	AM40HE
RCCB	63 A	30 mA	1	AM63HE
RCCB	80 A	30 mA	1	AM80HE
RCCB	100 A	30 mA	1	AM100HE
RCCB	25 A	100 mA	1	AM25ME
RCCB	40 A	100 mA	1	AM40ME
RCCB	63 A	100 mA	1	AM63ME
RCCB	80 A	100 mA	1	AM80ME
RCCB	100 A	100 mA	1	AM100ME
RCCB	25 A	300 mA	1	AM25LE
RCCB	40 A	300 mA	1	AM40LE
RCCB	63 A	300 mA	1	AM63LE
RCCB	80 A	300 mA	1	AM80LE
RCCB	100 A	300 mA	1	AM100LE
RCCB	100 A	100 mA, time delayed	1	AM100MET
RCCB	100 A	300 mA, time delayed	1	AM100LET



AM1004M

RCCBs - type 4P

Residual Current Operated Circuit Breaker without integral overload protection.

Description	Sensitivity	Rating	QPC	Eaton list number
RCCB	40 A	30 mA	1	AM404H
RCCB	63 A	30 mA	1	AM634H
RCCB	80 A	30 mA	1	AM804H
RCCB	100 A	30 mA	1	AM1004H
RCCB	40 A	100 mA	1	AM404M
RCCB	63 A	100 mA	1	AM634M
RCCB	80 A	100 mA	1	AM804M
RCCB	100 A	100 mA	1	AM1004M
RCCB	40 A	300 mA	1	AM404L
RCCB	63 A	300 mA	1	AM634L
RCCB	80 A	300 mA	1	AM804L
RCCB	100 A	300 mA	1	AM1004L
RCCB	100 A	300 mA, time delayed	1	AM1004LT
Adaptor kit to accept up to 50 mm ² cable			1	AMBT



Comb busbar, padlocking devices, auxiliary & alarm contacts and shunt trips

Comb busbar

For MCB, RCCB & RCBO

Technical characteristics

- Comb busbar is available for specialist applications and can be supplied in both pin and fork type formats.
- Comb busbars are supplied in 1 m lengths.
- Fork type comb busbar can be used with all Eaton MCBs and 4P RCCBs.
- Pin type comb busbar can be used with all Eaton MCBs, fuse modules, switch-disconnectors, terminal blocks 2P and 4P RCCBs.
- Due to a height difference 4P RCCBs cannot be inter-connected with comb busbar when mounted in combination with other devices.
- For incoming connections onto fork type comb busbar, MCB terminals clamp cable and busbar simultaneously.
- Busbar material: Copper.
- Rated operational voltage: 240/415 V
- Rated operational current: 63 A (100 A centre fed)
- Unused ways on comb busbar can be shielded by fitting the Eaton blanking module.



MB1P

Description	Type	QPC	Eaton list number
Comb busbar, 16 mm ² , 1P, insulated	Pin	1	MB1P
Comb busbar, 20 mm ² , 1P, insulated	Fork	1	MB1F
Comb busbar, 16 mm ² , 2P, insulated	Pin	1	MB2P
Comb busbar, 16 mm ² , 2P, insulated	Fork	1	MB2F
Comb busbar, 16 mm ² , 3P, insulated	Pin	1	MB3P
Comb busbar, 16 mm ² , 3P, insulated	Fork	1	MB3F
Comb busbar, 16 mm ² , 3P, insulated	Pin	1	MB4P
Comb busbar, 16 mm ² , 4P, insulated	Fork	1	MB4F

Comb busbar end covers

For MCB, RCCB & RCBO

For 1P, 2P and 4P busbar configurations supplied in packs of 10.



MBEC23

Description	QPC	Eaton list number
For 2P and 4P comb busbars: MB2P, MB2F, MB3P and MB3F	10	MBEC23
For 4P comb busbars: MB4P and MB4F	10	MBEC4

Padlocking devices

For MCB, RCBO, RCCB & switch disconnectors

The wide range of Eaton devices are complimented by a range of padlocking devices.

For MCBs, RCCBs and RCBOs the device mechanism is trip free which allows it to be padlocked 'ON' for security, but in the event of a fault condition the device will still operate to disconnect the fault. The device will move to the tripped position when the lock is removed. These devices can also be padlocked in the 'OFF' position.



MBL2

Description	QPC	Eaton list number
Padlocking device for MCB & RCBO	1	MBL2
Padlocking device, for 2P RCCBs	1	AML2
Padlocking device, for switch disconnectors	1	SML4
Padlock, including 2 keys	1	PD2

Terminal shroud

■ For MCB & RCBO & RCBO



MTSH1

Description	QPC	Eaton list number
Terminal shroud for MCB, 1P	1	MTSH1
Rear connection terminal	1	MBRC1

Auxiliary and Alarm contacts including test function

■ For MCB & RCBO



M2AU

Auxiliary and Alarm contact devices can be fitted together on one MCB. Each is incorporated in a 1/2 module (9 mm) casing with terminals protected to IP 20 capable of accepting cable up to 2.5 mm². These devices are designed and manufactured to IEC 60947-5-1 and incorporate a changeover switch providing remote indication of an MCB which has tripped under fault conditions.

Technical characteristics

- This auxiliary switch allows remote indication of the position of the MCB contacts.
- Auxiliary and Alarm contact ratings:
 - AC14 240 Vac 50Hz, 6A
 - DC14 125 Vdc, 1A.
- The auxiliary contact will not differentiate between an MCB that is "off" or "tripped".
- The auxiliary contact can be used in conjunction with a remote supply and signal lamps, bells or buzzers.

See technical section for dimensional drawings.

Description	QPC	Eaton list number
Auxiliary switch incorporating a test function	1	M2AU
Alarm switch incorporating reset and test function	1	M2AL

Shunt Trips and Under Voltage Releases

■ For MCB & RCBO



M2STA

A shunt release provides remote tripping of an MCB with three voltage options for AC & DC applications.

Technical characteristics

- Suitable for all Eaton MCBs and RCBOs including those with either auxiliary or alarm contacts.
- A shunt trip and undervoltage release can be fitted together on one MCB.
- Each is incorporated in a 1 module (18 mm) casing with terminals protected to IP 20 capable of accepting cable up to 2.5 mm².
- The shunt trip and UVR are simply clipped to the left hand side of an MCB or RCBO and have terminals at one end to allow connection to pan assemblies and comb busbar.

See technical section for dimensional drawings.

Description	dc characteristics	ac characteristics	QPC	Eaton list number
MCB shunt trip	24 Vdc	24 Vac	1	M2STA
MCB shunt trip	48 V - 60 Vdc	48 V - 110 Vac	1	M2STB
MCB shunt trip	110 Vdc	240 Vac	1	M2STC



M2UV240

Under Voltage Release

For MCB & RCBO

- Under Voltage Release (UVR) for remote tripping of an emergency stop loop.
- The UVR is simply clipped to the left hand side of an MCB or RCBO and have terminals at one end to allow connection to pan assemblies and comb busbar.

See technical section for dimensional drawings.

Description	ac characteristics	QPC	Eaton list number
Under Voltage Release	240 Vac	1	M2UV240

Rear connection terminal



MBRC1

For MCB & RCBO

Description	QPC	Eaton list number
Rear connection terminal	1	MBRC1

Terminal screw shield



MTS1

For MCB & RCBO

Description	QPC	Eaton list number
Terminal screw shield, 1P	1	MTS1

Terminal shroud



MTSH1

For MCB & RCBO

Description	QPC	Eaton list number
Terminal shroud, 1P	1	MTSH1



Time & impulse switches, contactors and switch-disconnectors

See page 36 for the technical details of Eaton Command Control products.



AT11SD

Analogue time switches - non quartz stabilised

220/240 Vac, 50 Hz

- All time switches have 1 changeover contact per channel and are suitable for switching 16 A resistive, 2.5 A inductive loads at 240 V, 50 Hz.
- For higher rated loads time switches should be used in conjunction with Eaton heating & lighting contactors.

Description	Type	Width in 18 mm modules	Minimum Programme Time	QPC	Eaton list number
Analogue, 1 channel	24 hrs.	1	30 min.	1	AT11SD
Analogue, 1 channel	24 hrs.	3	30 min.	1	AT1SD
Analogue, 1 channel	7 days	3	180 min.	1	AT1SW



AT1QW

Analogue time switches - quartz stabilised

220/240 Vac, 50 Hz

- Quartz stabilised devices have a running reserve time of 150 hrs. and a recharge time of 70 hrs.
- All time switches have 1 changeover contact per channel and are suitable for switching 16 A resistive, 2.5 A inductive loads at 240 V, 50 Hz.
- For higher rated loads time switches should be used in conjunction with Eaton heating & lighting contactors.

Description	Type	Width in 18 mm modules	Minimum Programme Time	QPC	Eaton list number
Analogue, 1 channel	24 hrs.	3	30 min.	1	AT1QD
Analogue, 1 channel	7 days	3	180 min.	1	AT1QW



AT11P

Digital time switches

220/240 Vac, 50 Hz, single channel

- Digital time switches have a running reserve of 150 hrs., and a full recharge time of 140 hrs.
- All time switches have 1 changeover contact per channel and are suitable for switching 16 A resistive, 2.5 A inductive loads at 240 V 50 Hz.
- For higher rated loads time switches should be used in conjunction with Eaton heating & lighting contactors. All time switches supplied with terminal shields and detachable wall mounting bracket.

Description	Type	Width in 18 mm modules	Minimum Programme Time	QPC	Eaton list number
Digital, 1 channel	Fully prog.	1	1 min.	1	AT11P
Digital, 1 channel	Fully prog.	2	1 min.	1	AT1P
Digital, 2 channel	Fully prog.	2	1 min.	1	AT2P



AA161

Contactors

- When several contactors are mounted it is advisable to fit a blanking module, List number MBP, every 2 contactors.

Description	Contacts	Width in 18 mm modules	Rating	QPC	Eaton list number
Contactors	1 NO + 1 NC	1	16 A	1	AA161
Contactors	2 NO	1	25 A	1	AA202
Contactors	2 NO	2	40 A	1	AA402
Contactors	3 NO	2	25 A	1	AA203
Contactors	3 NO	3	40 A	1	AA403
Contactors	3 NO	3	63 A	1	AA633
Contactors	4 NO	2	25 A	1	AA204
Contactors	4 NO	3	40 A	1	AA404
Contactors	4 NO	3	63 A	1	AA634



AA161RA

Impulse switches / relays

Description	Rating	Coil Voltage	Poles	Width in 18 mm modules	Contacts	QPC	Eaton list number
Impulse relays	16 A	230 Vac	1P	1	1 NO	1	AA161RA
Impulse relays	16 A	230 Vac	1P	1	1 NO / 1 NC	1	AA161RB



AA7

Time delay relay

For use on loads above 16 A, AC1 devices should be used in conjunction with a suitable Eaton contactor.

Description	Rating	Coil Voltage	Poles	Width in 18 mm modules	QPC	Eaton list number
Time delay relay, delay off (Staircase lighting switch)	16 A	230 Vac	1P	1	1	AA7



MS1001

Switch-disconnectors

- IEC 60947-3, 100 A, 240/415 Vac, switching category AC22B.
- Positive contact indication is also provided.
- Terminals are box type allowing cable capacity up to 50 mm².
- 1P+N switch-disconnectors have neutral contacts which make first - break last.

Description	Type	Width in 18 mm modules	Rating	QPC	Eaton list number
Switch-disconnector	1P	1	100 A	1	MS1001
Switch-disconnector	1P+N	2	100 A	1	MS1001N
Switch-disconnector	2P	2	100 A	1	MS1002
Switch-disconnector	3P	3	100 A	1	MS1003
Switch-disconnector	3P+N	4	100 A	1	MS1004
Padlocking device	-	-	-	1	SML4
Padlock, including 2 keys	-	-	-	1	PD2



MBT1001

Terminal blocks

- They can be used in outgoing circuits in place of an Eaton MCB or RCBO to tap off to other devices or boards.
- Terminals are box type allowing cable capacity up to 50 mm².

Description	Type	Width in 18 mm modules	Rating	QPC	Eaton list number
Terminal blocks	1P	1	100 A	1	MBT1001
Terminal blocks	2P	2	100 A	1	MBT1002
Terminal blocks	3P	3	100 A	1	MBT1003



For BS1361 fuses, 240 V rated

The Eaton fuse carrier range uses high performance Eaton BS1361 type HRC fuses capable of disconnecting short circuits of up to 16 kA. The protection of circuits by Eaton fuse and carriers is particularly applicable where circuits exhibit high inrush e.g. high frequency lighting. Current ratings are available in 5 up to 45 A ratings. The range is available as 1P devices only.

Technical characteristics

- Eaton fuse carriers feature a fully shrouded contact mechanism.
- Each unit is supplied with a 240 V fuse fitted, and facility for a spare fuse, which can be contained within the fuse carrier.
- For 415 V applications contact us for details of suitable fuse units and fuselinks.
- Eaton types MFM35, MFM40, MFM45 units are 36 mm wide and require 2 x 1P distribution board ways.

➔ See page 38 for the technical details of Eaton Fuse carriers & fuses.



MFM10

Fuse carriers, type HRC

Fuse carrier is supplied including 1 HRC fuse

Description	Rating	Fuse type	QPC	Eaton list number
Fuse carrier	5 A	5LC	1	MFM05
Fuse carrier	10 A	10LC	1	MFM10
Fuse carrier	15 A	15LC	1	MFM15
Fuse carrier	20 A	20LC	1	MFM20
Fuse carrier	30 A	30LC	1	MFM30
Fuse carrier	35 A	35LCS	1	MFM35
Fuse carrier	40 A	40LCS	1	MFM40
Fuse carrier	45 A	45LCS	1	MFM45



45LCS

Spare fuses

Description	Rating	Fuse type	QPC	Eaton list number
Spare fuse	5 A	5LC	1	5LC
Spare fuse	10 A	10LC	1	10LC
Spare fuse	15 A	15LC	1	15LC
Spare fuse	20 A	20LC	1	20LC
Spare fuse	30 A	30LC	1	30LC
Spare fuse	35 A	35LCS	1	35LCS
Spare fuse	40 A	40LCS	1	40LCS
Spare fuse	45 A	45LCS	1	45LCS



MCB pan assemblies

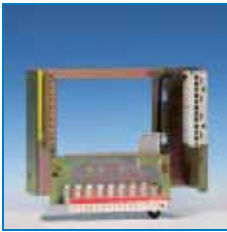
Interiors & incoming devices for single phase and three phase

Eaton MCB pan assemblies offer a high degree of flexibility for custom applications. 1P+N types are available with 4, 7, 10, 13, and 16 ways. 3P+N types with 4, 6, 8, 12, 16 and 24 ways.

Technical characteristics

- Eaton MCB pan assemblies are suitable for inclusion in other factory built assemblies and as replacements for distribution board interiors.
- MCB pan assemblies feature fully shrouded busbars.

See page 39 for the technical details of Eaton MCB pan assemblies.



AMP7

MCB pan assemblies, interiors, single phase, with earth & neutral bars

Description	Pole configurations	Rating	QPC	Eaton list number
MCB pan assembly, 4-way	1P+N without incomer	100 A	1	AMP4
MCB pan assembly, 7-way	1P+N without incomer	100 A	1	AMP7
MCB pan assembly, 10-way	1P+N without incomer	100 A	1	AMP10
MCB pan assembly, 13-way	1P+N without incomer	100 A	1	AMP13
MCB pan assembly, 16-way	1P+N without incomer	100 A	1	AMP16



BMP61

MCB pan assemblies, interiors, three phase, with earth & neutral bars

Description	Pole configuration	Rating	QPC	Eaton list number
MCB pan assembly, 4-way	3P+N without incomer	125 A	1	BMP41
MCB pan assembly, 6-way	3P+N without incomer	125 A	1	BMP61
MCB pan assembly, 8-way	3P+N without incomer	125 A	1	BMP81
MCB pan assembly, 4-way	3P+N without incomer	200 A	1	BMP42
MCB pan assembly, 6-way	3P+N without incomer	200 A	1	BMP62
MCB pan assembly, 8-way	3P+N without incomer	200 A	1	BMP82
MCB pan assembly, 12-way	3P+N without incomer	200 A	1	BMP122
MCB pan assembly, 16-way	3P+N without incomer	200 A	1	BMP162
MCB pan assembly, 24-way	3P+N without incomer	200 A	1	BMP242L



BMP62

MCB pan assemblies, interiors, three phase, without earth and neutral bars

Description	Pole configuration	Rating	QPC	Eaton list number
MCB pan assembly, 4-way	3P+N mainlugs fitted	200 A	1	BMPS42
MCB pan assembly, 6-way	3P+N mainlugs fitted	200 A	1	BMPS62
MCB pan assembly, 8-way	3P+N mainlugs fitted	200 A	1	BMPS82
MCB pan assembly, 12-way	3P+N mainlugs fitted	200 A	1	BMPS122
MCB pan assembly, 16-way	3P+N mainlugs fitted	200 A	1	BMPS162
MCB pan assembly, 24-way	3P+N mainlugs fitted	200 A	1	BMP242LWEN



AM100HE

MCB pan assemblies, incoming device, single phase bars

Incoming device supplied separately to MCB pan assemblies.

Description	Sensitivity	Pole	Rating	QPC	Eaton list number
RCCB, incoming device	30 mA	1P+N	100 A	1	AM 100HE
RCCB, incoming device	100 mA	1P+N	100 A	1	AM 100ME
RCCB, incoming device	300 mA	1P+N	100 A	1	AM 100LE
RCCB, incoming device	100 mA, time delayed	1P+N	100 A	1	AM 100MET
RCCB, incoming device	300 mA, time delayed	1P+N	100 A	1	AM 100LET
Switch-disconnector		1P+N	100 A	1	MS 1001N
Direct connection lugs		2P	100 A	1	MBT 1002



BMS2003P

MCB pan assemblies, incoming device, three phase bars

Incoming device supplied separately to MCB pan assemblies.

Description	Pole configurations	Rating	QPC	Eaton list number
Switch-disconnector	3P	160 A	1	BMS1603P
Switch-disconnector	3P	200 A	1	BMS2003P
Direct connection lugs	3P	200 A	1	BMBT2003



Technical characteristics, overview

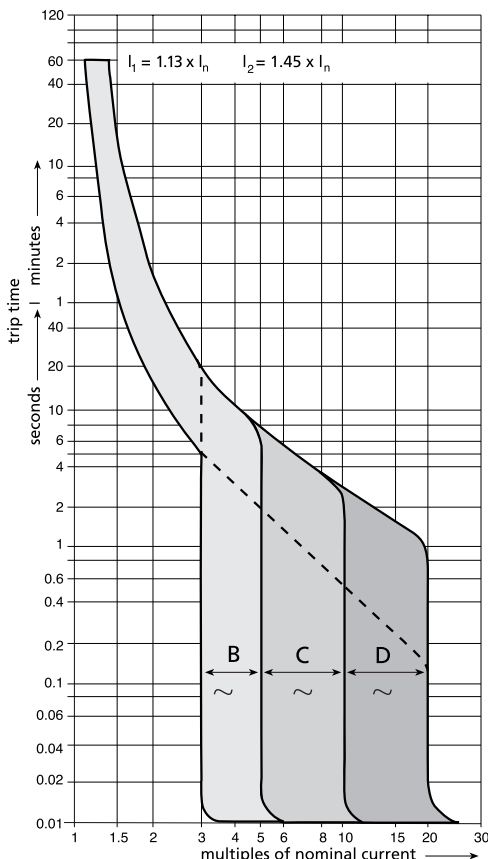
Type	MCB	RCBOs	RCCBs 2P	RCCBs 4P	Fuses
Standards	IEC60898, IEC60947-2	IEC 61009	BSEN 61008	IEC 61008	BS 1361
Breaking Capacity to					
- IEC 60898 /60947-2 (L-type)	6 kA	6 kA	-	-	-
- IEC 60898 /IEC 60947-2 (H-type)	10 kA	10 kA	-	-	-
- IEC 60947-2 (V-type)	15 kA	15 kA	-	-	-
- BS 1361	-	-	-	-	16 kA
Sensitivities (mA)		10, 30, 100, 100 t.d., 300 t.d.	10, 30, 100, 300, 100 t.d., 300 t.d.	30, 100, 300, 300 t.d.	-
Current Ratings (A) ¹⁾	1,2,4,6,8,10,13, 16, 20, 25, 32, 40, 50, 63	1,2,4,6,8,10,13,16, 20, 25, 32, 40,50, 63 ²⁾	16,25,32,40,63, 80, 100	40,63, 80, 100	5, 10, 15, 20, 30, 35, 40, 45
Voltage Rating 50/60 Hz (V)	230/400 Vac 24 Vdc (6 kA) to 120 Vdc (4 kA)	230 Vac 110 Vac	230 Vac	230/400 Vac	230 Vac
DIN-rail mounting	Yes	Yes	Yes	Yes	Yes
Tunnel 'box' terminals	Yes	Yes	Yes	Yes	Yes
Cable capacity	25 mm ²	25 mm ²	50 mm ²	35 mm ²	25 mm ²
Terminals suitable for:					
- Stranded copper cable	Top & Bottom ³⁾	Top & Bottom	Top & Bottom	Top & Bottom ³⁾	Top & Bottom
- Solid copper cable	Top & Bottom ³⁾	Top & Bottom	Top & Bottom	Top & Bottom ³⁾	Top & Bottom
- Comb busbar (Fork)	Top & Bottom ³⁾	Bottom	-	Top & Bottom ³⁾	-
- Comb busbar (Pin)	Top & Bottom	Bottom	Top & Bottom	Top & Bottom	Top & Bottom

¹⁾ 1, 2, 4, 8 & 13 A ratings 10 kA I_{cu} max.

²⁾ 10 mA only available up to 32 A inclusive.

³⁾ Terminals will clamp cable and fork type comb busbars simultaneously.

Trip curve characteristics



Thermal protection:

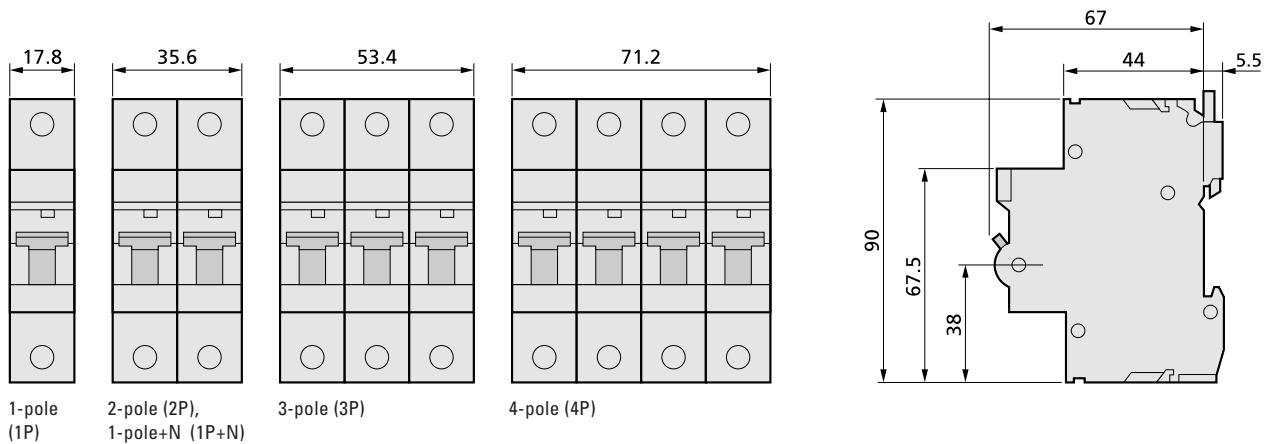
I_1 ($1,13 \times I_n$): MCB is not allowed to trip within one hour.

I_2 ($1,45 \times I_n$): MCB must trip within 1 hour.

Electromagnetic protection:

- Trip type B:
at $3 \times I_n$ MCB does not trip at: $t \geq 0.1s$
at $5 \times I_n$ MCB does trip within: $t < 0.1s$
- Trip type C:
at $5 \times I_n$ MCB does not trip at: $t \geq 0.1s$
at $10 \times I_n$ MCB does trip within: $t < 0.1s$
- Trip type D:
at $10 \times I_n$ MCB does not trip at: $t \geq 0.1s$
at $20 \times I_n$ MCB does trip within: $t < 0.1s$

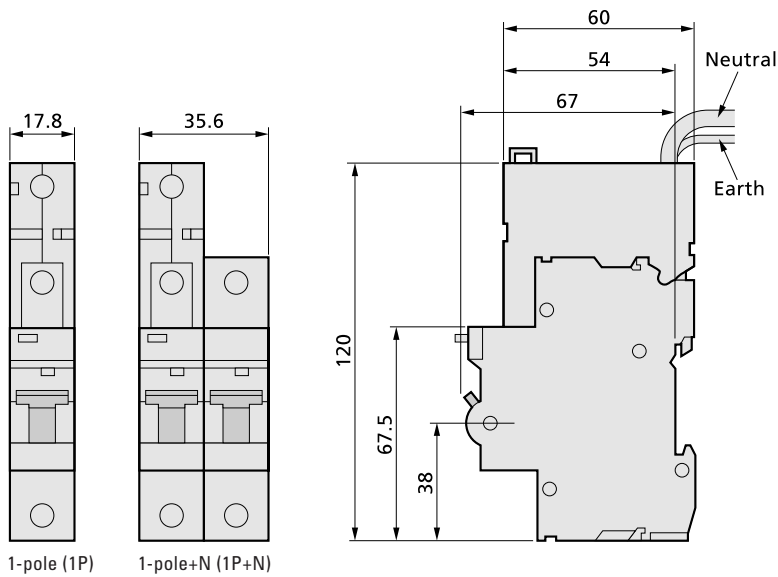
MCB 1P, 2P, 3P & 4P, dimensional drawings



MCB-range, technical characteristics

		MCB 6 kA	MCB 10 kA	MCB 15 kA
Standards		IEC 60898, IEC 60947-2	IEC 60898, IEC 60947-2	IEC 60947-2
Rated Current Range	I_n	1 - 63 A	1 - 63 A	6 - 63 A
Poles		1P, 1P+N, 2P, 3P, 4P	1P, 1P+N, 2P, 3P, 4P	1P, 2P, 3P
Rated voltage	U_e	1P, 1P+N 230 Vac 2P, 3P, 4P 230 / 400 V	1P, 1P+N 230 Vac 2P, 3P, 4P 230 / 400 V	2P, 3P 230 / 400 Vac
Insulation voltage	U_i	500 V	500 V	500 V
Rated voltage max. d.c. 1P		60 Vdc	60 Vdc	60 Vdc
Rated voltage max. d.c. 2P		125 Vdc	125 Vdc	125 Vdc
Minimum operating voltage U_b min.		12 Vac-12 Vdc	12 Vac-12 Vdc	12 Vac-12 Vdc
Rated frequency		50/60 Hz	50/60 Hz	50/60 Hz
Rated breaking capacity to IEC 60898 at 400 Vac	I_{cn}	6 kA	10 kA	-
Rated breaking capacity ultimate to IEC 60947-2 at 400 Vac	I_{cu}	6 kA	10 kA	15 kA
Rated breaking capacity ultimate to IEC 60947-2 at 400 Vac	I_{cs}	3 kA	5 kA	8 kA
Impulse withstand voltage (1.2/50)	U_{imp}	5 kV	5 kV	5 kV
Dielectric test voltage at 50/60Hz for 1 min.		2.5 kV	2.5 kV	2.5 kV
Instantaneous release Type B		3 to 5 x I_n	3 to 5 x I_n	3 to 5 x I_n
Instantaneous release Type C		5 to 10 x I_n	5 to 10 x I_n	5 to 10 x I_n
Instantaneous release Type D		10 to 20 x I_n	10 to 20 x I_n	-
Energy Limiting Class to IEC 60898 ($I_n < 40A$)		3	3	-
Positive contact indication		Red / green flag indicator	Red / green flag indicator	Red / green flag indicator
Electrical life		>10,000 cycles	>10,000 cycles	>10,000 cycles
Mechanical life		>20,000 cycles	>20,000 cycles	>20,000 cycles
Protection degree inside / outside enclosure		IP 20 / IP 40	IP 20 / IP 40	IP 20 / IP 40
Tropicalisation to IEC 60068-2		+55 °C at 95% RH	+55 °C at 95% RH	+55 °C at 95% RH
Thermal reference calibration temperature		40 °C (50 °C option)	40 °C (50 °C option)	40 °C (50 °C option)
Operating temperature range		-25 °C to +55 °C	-25 °C to +55 °C	-25 °C to +55 °C
Cable capacity upper/lower terminals		25 mm ²	25 mm ²	25 mm ²
Maximum terminal torque		2.0 Nm	2.0 Nm	2.0 Nm
Mounting		DIN rail EN 60715 (35 mm)	DIN rail EN 60715 (35 mm)	DIN rail EN 60715 (35 mm)
Pole dimensions H x D x W		90 x 67 x 17.8 mm	90 x 67 x 17.8 mm	90 x 67 x 17.8 mm
Pole weight		140 g	140 g	140 g

RCBO, dimensional drawings

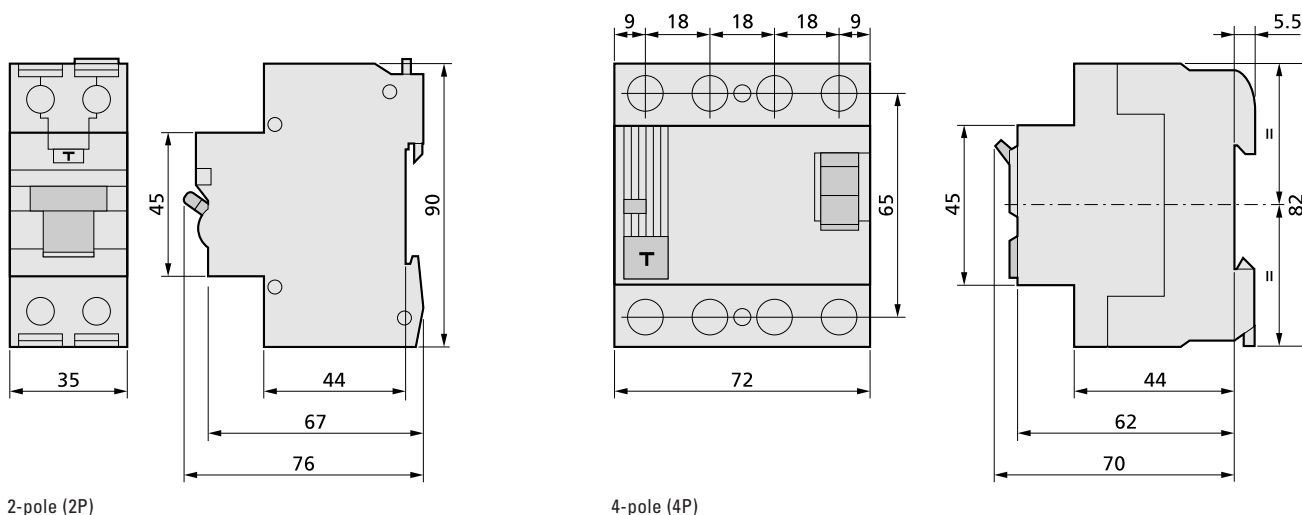


Dimensions of RCBOs (combined MCB/RCD).

RCBO, technical characteristics

Type	RCBO
Standard	IEC 61009
Tripping class	A
Nominal frequency	50/ 60 Hz
Maximum ac operating voltage	U_e max 240 / 415 V~
Minimum ac operating voltage	U_e min 100 Vac
Isolator application acc. IEC60947-2	yes
Impulse withstand voltage	U_{imp} 5 kV
Dielectric rigidity	2.5 kV
Protection degree (inside / outside enclosure)	IP 20 / IP 40
Tropicalisation acc. IEC 60068-2	+55 °C at 95%RH
Operating temperature	-25 °C to +55 °C
Capacity terminal upper/ lower terminals	25 mm ²
Maximum torque on terminals	2.0 Nm
Pole dimensions H x D x W	120 x 67 x 17.8 mm

RCCB-range, dimensional drawings



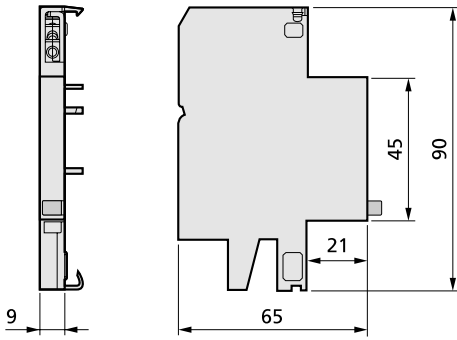
2-pole (2P)

4-pole (4P)

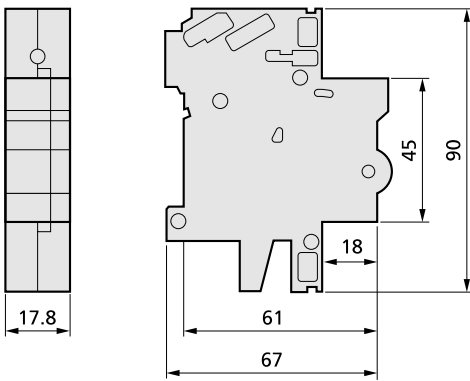
RCCB-range, technical characteristics

		RCCB 2P	RCCB 4P
Standards		IEC 61008	IEC 61008
Rated Current Range	I_n	16 A - 100 A	40 A - 100 A
Poles		2	4
Rated voltage	U_e	240 Vac	240 / 415 Vac
Rated frequency		50 / 60 Hz	50 / 60 Hz
Rated residual currents / sensitivity	$I_{\Delta n}$	10, 30, 100, 300 mA 100 mA, 300 mA time delay	10, 30, 100, 300 mA 300 mA time delay
Tripping range		0.5 - 1.0 x $I_{\Delta n}$	0.5 - 1.0 x $I_{\Delta n}$
Tripping time non-delay type at 1 x $I_{\Delta n}$		0.2 s	0.2 s
Tripping time non-delay type at 5 x $I_{\Delta n}$		0.035 s	0.035 s
Tripping time delay type at 1 x $I_{\Delta n}$		0.3 s	0.3 s
Tripping time delay type at 5 x $I_{\Delta n}$		0.08 s	0.08 s
Insulation voltage	U_i	250 V	440 V
Rated short circuit current		6 kA	6 kA
Rated residual short circuit current		6 kA	6 kA
Short circuit withstand capacity - 100 A fuse gL		10 kA	10 kA
Impulse withstand voltage (1.2/50)	U_{imp}	5 kV	5 kV
Dielectric test voltage at 50/60 Hz for 1 min.		2.5 kV	2.5 kV
Positive contact indication		Red / Green flag indicator	Red / Green flag indicator
Protection degree inside / outside enclosure		IP20 / IP40	IP20 / IP40
Tropicalisation to IEC 60068-2		+55 °C at 95% RH	+55 °C at 95% RH
Operating temperature range		-5 °C to +55 °C	-5 °C to +55 °C
Cable capacity upper/lower terminals		50 mm ²	35 mm ²
Maximum terminal torque		3.5 Nm	3.5 Nm
Mounting		DIN rail EN 60715 (35 mm)	DIN rail EN 60715 (35 mm)
Pole dimensions H x D x W		90 x 67 x 36 mm	82 x 68 x 72 mm

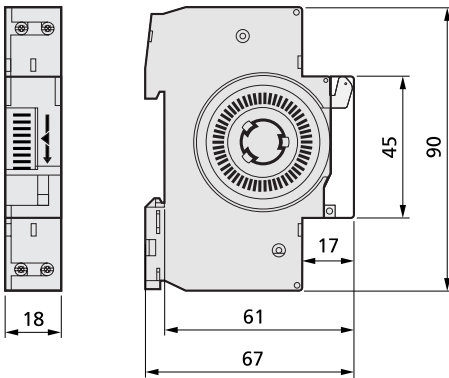
Auxiliary & Alarm contacts, dimensional drawings



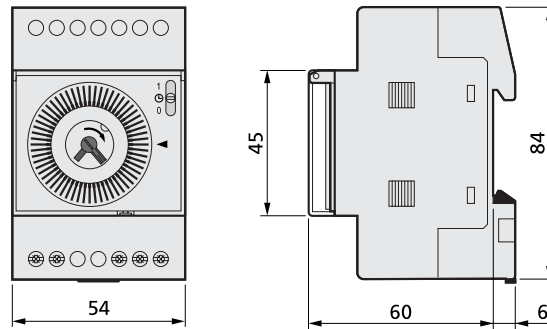
Shunt trips & UVRs, dimensional drawings



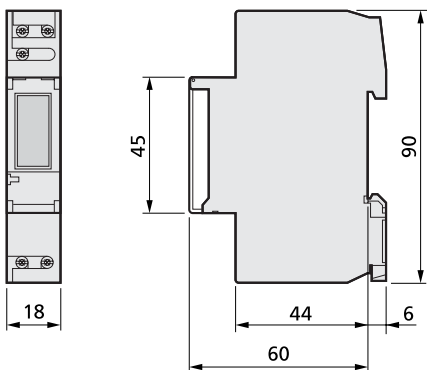
Time switches, dimensional drawings



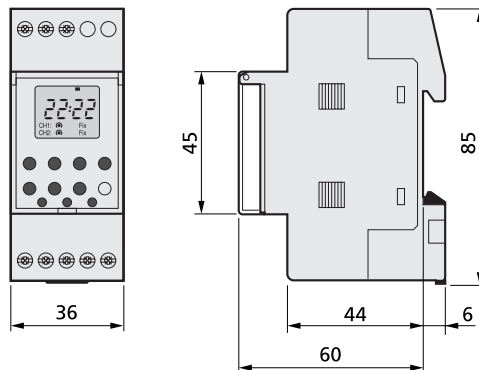
AT11SD



AT1SD, AT1SW, AT1QD, AT1QW

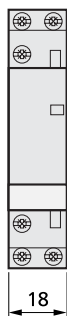


AT11P

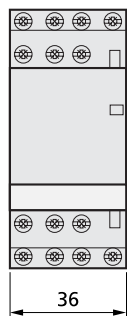


AT1P, AT2P

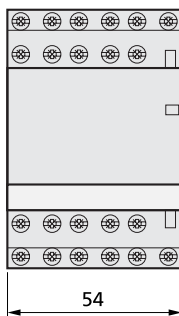
Contactors, dimensional drawings



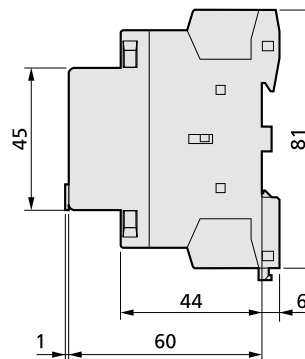
AA161, AA202



AA402, AA203, AA204



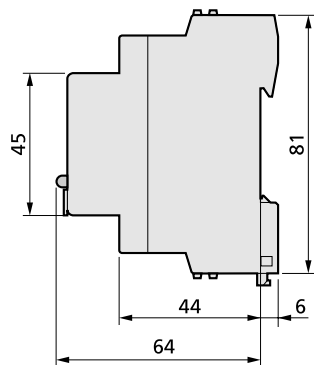
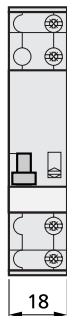
AA403, AA633, AA404, AA634



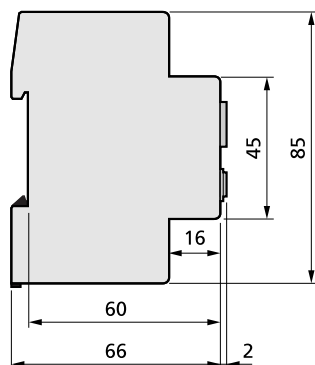
Contactors, technical characteristics

Rating I_n	Contactor 16 / 25 A	Contactor 40 / 63 A
Standard	IEC 60947-4-1	IEC 60947-4-1
Nominal operating voltage	U_e 250 - 400 V	250 - 400 V
Nominal frequency	50 / 60 Hz	50 / 60 Hz
Protection degree (inside / outside enclosure)	IP 20 / IP 40	IP 20 / IP 40
Operating temperature	-5 °C to + 50 °C	-5 °C to + 50 °C
Capacity terminal - minimum - Massive	1 x 6 mm ²	1 x 25 mm ²
Capacity terminal - maximum - Stranded	2 x 2,5 mm ²	2 x 10 mm ²

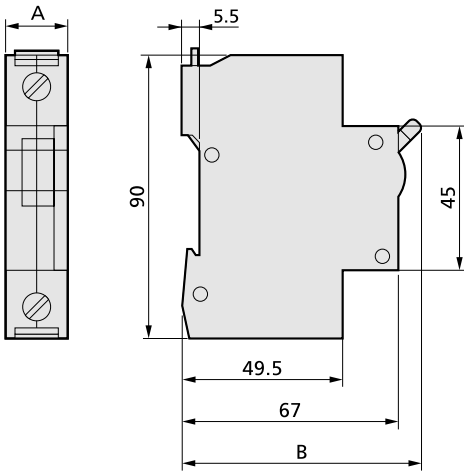
Impulse switches / relays, dimensional drawings



Time delay relay (staircase lighting switch), dimensional drawings



Switch-disconnectors and terminal blocks



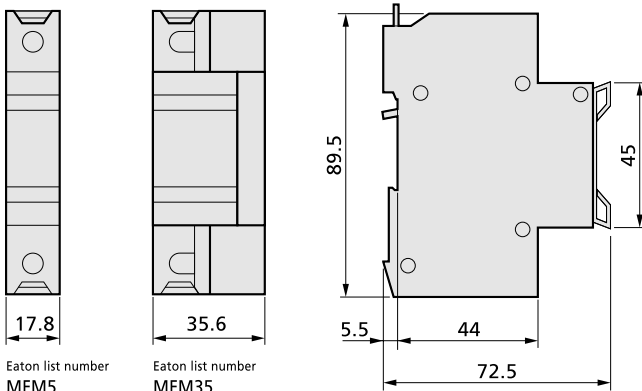
Switch-disconnectors

Eaton list number	A	B
MS1001	17.8	76
MS1001N	35.6	76
MS1002	35.6	76
MS1003	53.4	76
MS1004	71.2	76

Terminal blocks

Eaton list number	A	B
MBT1001	17.8	67
MBT1002	35.6	67
MBT1003	53.4	67

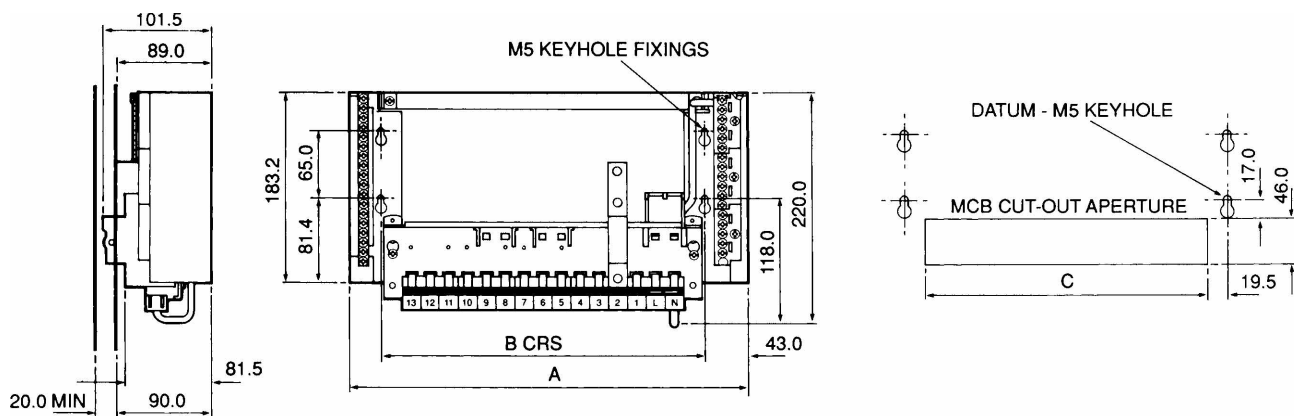
Fuse carriers, type HRC , dimensional drawings



Eaton list number
MFM5
MFM10
MFM15
MFM20
MFM30

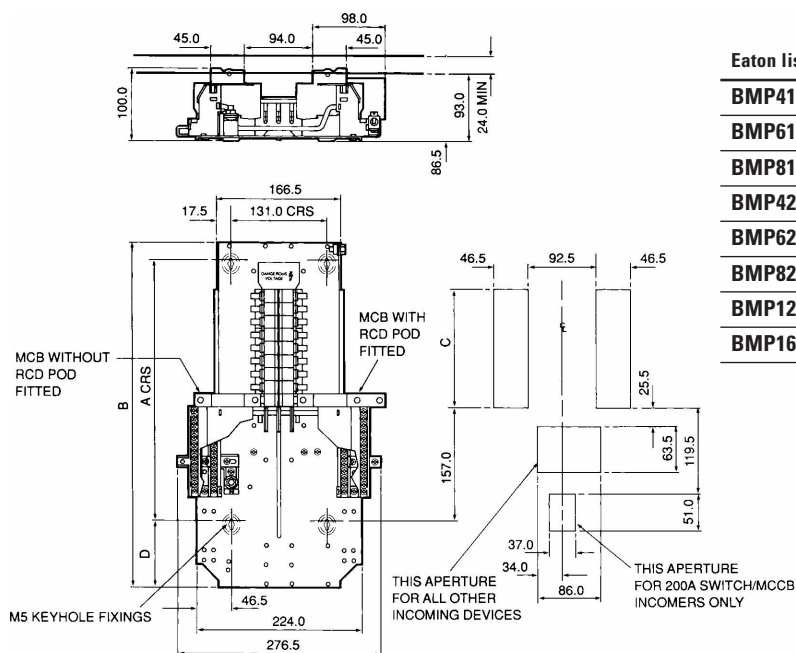
Eaton list number
MFM35
MFM40
MFM45

Pan assemblies, single phase, dimensional drawings



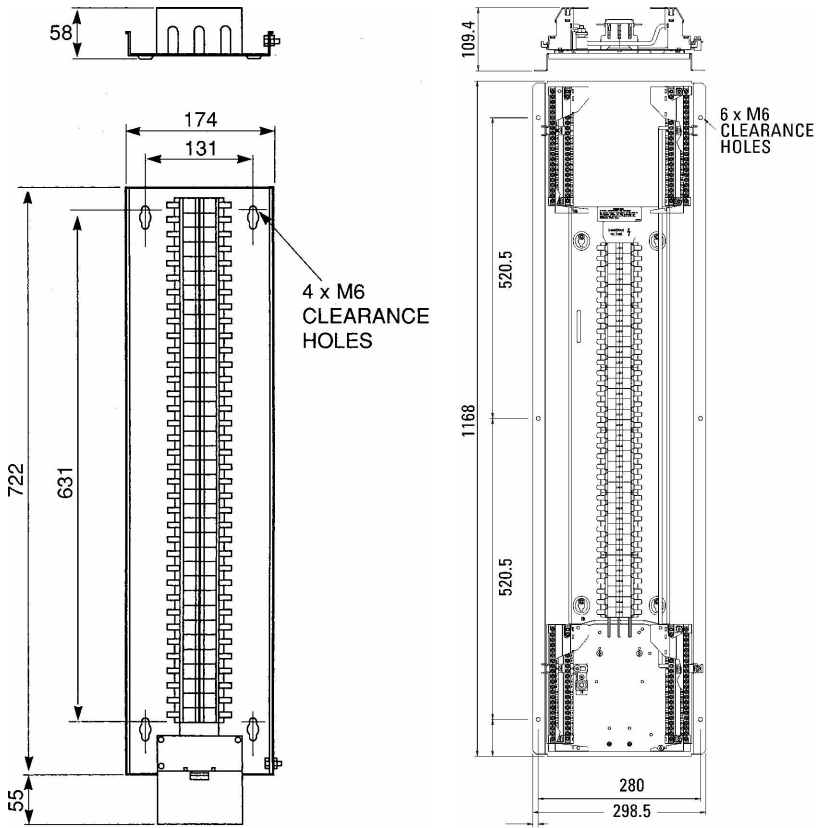
Eaton list number	A	B	C
AMP4	218.5	147.5	109
AMP7	272.5	201.5	163
AMP5D, AMP10	326.5	255.5	217
AMP13	380.5	309.5	271
AMP8D, AMP16	434.5	363.5	325

Pan assemblies, three phase, dimensional drawings

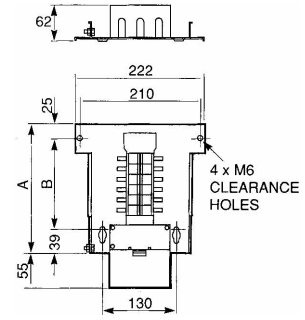


Eaton list number	A	B	C	D
BMP41	307	369.5	109.5	38.5
BMP61	361	423.5	163.5	38.5
BMP81	415	477.5	217.5	38.5
BMP42, BMP61D	307	423.5	109.5	92.5
BMP62	361	477.5	163.5	92.5
BMP82, BMP121D	415	531.5	217.5	92.5
BMP122, BMP181D	523	639.5	325.5	92.5
BMP162, BMP241D	631	747.5	433.5	92.5

Pan assemblies, pan assemblies without earth and neutral, dimensional drawings



Eaton list number	A	B
BMPS42	226	162
BMPS62	280	216
BMPS82	334	270
BMPS122	442	378
BMPS162	550	486



A			
Analogue time switches - non quartz stabilised	27	MCBs - 15 kA, trip type C, 1P	20
Analogue time switches - quartz stabilised	27	MCBs - 15 kA, trip type C, 2P	20
Auxiliary & Alarm contacts, dimensional drawings	36	MCBs - 15 kA, trip type C, 3P	20
Auxiliary and Alarm contacts including test function	25		
C		P	
Comb busbar	24	Padlocking devices	24
Comb busbar end covers	24	Pan assemblies, without earth and neutral, dimensional drawings	40
Contactors	28	Pan assemblies, single phase, dimensional drawings	39
Contactors, dimensional drawings	37	Pan assemblies, three phase, dimensional drawings	39
Contactors, technical characteristics	37		
D		R	
Digital time switches	27	RCBO, dimensional drawings	34
		RCBO, technical characteristics	34
E		RCBOs - Field Fittable Residual Current units	22
Eaton MCB with KEMA approval	5	RCBOs - Standard Ready Assembled, 1P, trip type C	21
		RCCB-range, dimensional drawings	35
F		RCCB-range, technical characteristics	35
Fuse carriers, type HRC	29	RCCBs - type 2P	23
Fuse carriers, type HRC , dimensional drawings	38	RCCBs - type 4P	23
		Rear connection terminal	26
I		S	
Impulse relays, dimensional drawings	37	Shunt trips & UVRs, dimensional drawings	36
Impulse switch / relays	28	Shunt Trips and UVRs	25
		Spare fuses	29
M		Switch-disconnectors	28
MCB 1P, 2P, 3P & 4P, dimensional drawings	33	Switch-disconnectors and terminal blocks	38
MCB pan assemblies, incoming device, single phase bars	31		
MCB pan assemblies, incoming device, three phase bars	31	T	
MCB pan assemblies, interiors, single phase, with earth & neutral bars	30	Technical characteristics, overview	32
MCB pan assemblies, interiors, three phase, with earth & neutral bars	30	Terminal blocks	28
MCB pan assemblies, interiors, three phase, without earth & neutral	30	Terminal screw shield	26
MCB-range, technical characteristics	33	Terminal shroud	25-26
MCBs - 6 kA, trip type B, 1P	7	The feature packed Eaton Command Control products	6
MCBs - 6 kA, trip type B, 1P+N	7	The feature packed Eaton MCB	4
MCBs - 6 kA, trip type B, 2P	8	The feature packed Eaton RCBO	5
MCBs - 6 kA, trip type B, 3P	8	The feature packed Eaton RCCB	5
MCBs - 6 kA, trip type B, 4P	8	Time delay relay switches, dimensional drawings	37
MCBs - 6 kA, trip type C, 1P	9	Time delay relays	28
MCBs - 6 kA, trip type C, 1P+N	9	Time switches, dimensional drawings	36
MCBs - 6 kA, trip type C, 2P	9	Trip curve characteristics	32
MCBs - 6 kA, trip type C, 3P	10		
MCBs - 6 kA, trip type C, 4P	10	U	
MCBs - 6 kA, trip type D, 1P	10	Under Voltage Release	26
MCBs - 6 kA, trip type D, 1P+N	11		
MCBs - 6 kA, trip type D, 2P	11		
MCBs - 6 kA, trip type D, 3P	11		
MCBs - 6 kA, trip type D, 4P	12		
MCBs - 10 kA, trip type B, 1P	13		
MCBs - 10 kA, trip type B, 1P+N	13		
MCBs - 10 kA, trip type B, 2P	14		
MCBs - 10 kA, trip type B, 3P	14		
MCBs - 10 kA, trip type B, 4P	14		
MCBs - 10 kA, trip type C, 1P	15		
MCBs - 10 kA, trip type C, 1P+N	15		
MCBs - 10 kA, trip type C, 2P	15		
MCBs - 10 kA, trip type C, 3P	16		
MCBs - 10 kA, trip type C, 4P	16		
MCBs - 10 kA, trip type D, 1P	16		
MCBs - 10 kA, trip type D, 1P+N	17		
MCBs - 10 kA, trip type D, 2P	17		
MCBs - 10 kA, trip type D, 3P	17		
MCBs - 10 kA, trip type D, 4P	18		
MCBs - 15 kA, trip type B, 1P	19		
MCBs - 15 kA, trip type B, 2P	19		
MCBs - 15 kA, trip type B, 3P	19		

10LC	10LC	29	MBH101	1P	13	MBH408	4P	14
15LC	15LC	29	MBH101N	1P+N	13	MBH410	4P	14
20LC	20LC	29	MBH102	1P	13	MBH413	4P	14
30LC	30LC	29	MBH102N	1P+N	13	MBH416	4P	14
35LCS	35LCS	29	MBH104	1P	13	MBH420	4P	14
45LCS	45LCS	29	MBH104N	1P+N	13	MBH425	4P	14
5LC	5LC	29	MBH106	1P	13	MBH432	4P	14
AA161	1P	28	MBH106N	1P+N	13	MBH440	4P	14
AA161RA	1P	28	MBH108	1P	13	MBH450	4P	14
AA161RB	1P	28	MBH108N	1P+N	13	MBH463	4P	14
AA202	2P	28	MBH110	1P	13	MBL101	1P	7
AA203	3P	28	MBH110N	1P+N	13	MBL101N	1P+N	7
AA204	4P	28	MBH113	1P	13	MBL102	1P	7
AA402	2P	28	MBH113N	1P+N	13	MBL102N	1P+N	7
AA403	3P	28	MBH116	1P	13	MBL104	1P	7
AA404	4P	28	MBH116N	1P+N	13	MBL104N	1P+N	7
AA633	3P	28	MBH120	1P	13	MBL106	1P	7
AA634	4P	28	MBH120N	1P+N	13	MBL106N	1P+N	7
AA7	1P	28	MBH125	1P	13	MBL108	1P	7
AM 100HE	1P+N	31	MBH125N	1P+N	13	MBL108N	1P+N	7
AM 100LE	1P+N	31	MBH132	1P	13	MBL110	1P	7
AM 100LET	1P+N	31	MBH132N	1P+N	13	MBL110N	1P+N	7
AM 100ME	1P+N	31	MBH140	1P	13	MBL113	1P	7
AM 100MET	1P+N	31	MBH140N	1P+N	13	MBL113N	1P+N	7
AMP10	1P+N without incomer	30	MBH150	1P	13	MBL116	1P	7
AMP13	1P+N without incomer	30	MBH150N	1P+N	13	MBL116N	1P+N	7
AMP16	1P+N without incomer	30	MBH163	1P	13	MBL120	1P	7
AMP4	1P+N without incomer	30	MBH163N	1P+N	13	MBL120N	1P+N	7
AMP7	1P+N without incomer	30	MBH201	2P	14	MBL125	1P	7
AT11P	Fully prog.	27	MBH202	2P	14	MBL125N	1P+N	7
AT11SD	24 hrs.	27	MBH204	2P	14	MBL132	1P	7
AT1P	Fully prog.	27	MBH206	2P	14	MBL132N	1P+N	7
AT1QD	24 hrs.	27	MBH208	2P	14	MBL140	1P	7
AT1QW	7 days	27	MBH210	2P	14	MBL140N	1P+N	7
AT1SD	24 hrs.	27	MBH213	2P	14	MBL150	1P	7
AT1SW	7 days	27	MBH216	2P	14	MBL150N	1P+N	7
AT2P	Fully prog.	27	MBH220	2P	14	MBL163	1P	7
BMBT2003	3P	31	MBH225	2P	14	MBL163N	1P+N	7
BMP122	3P+N without incomer	30	MBH232	2P	14	MBL201	2P	8
BMP162	3P+N without incomer	30	MBH240	2P	14	MBL202	2P	8
BMP242L	3P+N without incomer	30	MBH250	2P	14	MBL204	2P	8
BMP242LWEN		MBH263	2P	14	MBL206	2P	8
.....	3P+N mainlugs fitted	30	MBH301	3P	14	MBL208	2P	8
BMP41	3P+N without incomer	30	MBH302	3P	14	MBL210	2P	8
BMP42	3P+N without incomer	30	MBH304	3P	14	MBL213	2P	8
BMP61	3P+N without incomer	30	MBH306	3P	14	MBL216	2P	8
BMP62	3P+N without incomer	30	MBH308	3P	14	MBL220	2P	8
BMP81	3P+N without incomer	30	MBH310	3P	14	MBL225	2P	8
BMP82	3P+N without incomer	30	MBH313	3P	14	MBL232	2P	8
BMPS122	3P+N mainlugs fitted	30	MBH316	3P	14	MBL240	2P	8
BMPS162	3P+N mainlugs fitted	30	MBH320	3P	14	MBL250	2P	8
BMPS42	3P+N mainlugs fitted	30	MBH325	3P	14	MBL263	2P	8
BMPS62	3P+N mainlugs fitted	30	MBH332	3P	14	MBL301	3P	8
BMPS82	3P+N mainlugs fitted	30	MBH340	3P	14	MBL302	3P	8
BMS1603P	3P	31	MBH350	3P	14	MBL304	3P	8
BMS2003P	3P	31	MBH363	3P	14	MBL306	3P	8
M2STA	25	MBH401	4P	14	MBL308	3P	8
M2STB	25	MBH402	4P	14	MBL310	3P	8
M2STC	25	MBH404	4P	14	MBL313	3P	8
M2UV240	26	MBH406	4P	14	MBL316	3P	8

Eaton list number Index

MBL320.....3P.....8	MCH108N.....1P+N.....15	MCH463.....4P.....16
MBL325.....3P.....8	MCH110.....1P.....15	MCL101.....1P.....9
MBL332.....3P.....8	MCH110N.....1P+N.....15	MCL101N.....1P+N.....9
MBL340.....3P.....8	MCH113.....1P.....15	MCL102.....1P.....9
MBL350.....3P.....8	MCH113N.....1P+N.....15	MCL102N.....1P+N.....9
MBL363.....3P.....8	MCH116.....1P.....15	MCL104.....1P.....9
MBL401.....4P.....8	MCH116N.....1P+N.....15	MCL104N.....1P+N.....9
MBL402.....4P.....8	MCH120.....1P.....15	MCL106.....1P.....9
MBL404.....4P.....8	MCH120N.....1P+N.....15	MCL106N.....1P+N.....9
MBL406.....4P.....8	MCH125.....1P.....15	MCL108.....1P.....9
MBL408.....4P.....8	MCH125N.....1P+N.....15	MCL108N.....1P+N.....9
MBL410.....4P.....8	MCH132.....1P.....15	MCL110.....1P.....9
MBL413.....4P.....8	MCH132N.....1P+N.....15	MCL110N.....1P+N.....9
MBL416.....4P.....8	MCH140.....1P.....15	MCL113.....1P.....9
MBL420.....4P.....8	MCH140N.....1P+N.....15	MCL113N.....1P+N.....9
MBL425.....4P.....8	MCH150.....1P.....15	MCL116.....1P.....9
MBL432.....4P.....8	MCH150N.....1P+N.....15	MCL116N.....1P+N.....9
MBL440.....4P.....8	MCH163.....1P.....15	MCL120.....1P.....9
MBL450.....4P.....8	MCH163N.....1P+N.....15	MCL120N.....1P+N.....9
MBL463.....4P.....8	MCH201.....2P.....15	MCL125.....1P.....9
MBT1001.....1P.....28	MCH202.....2P.....15	MCL125N.....1P+N.....9
MBT1002.....2P.....28	MCH204.....2P.....15	MCL132.....1P.....9
MBT1002.....2P.....31	MCH206.....2P.....15	MCL132N.....1P+N.....9
MBT1003.....3P.....28	MCH208.....2P.....15	MCL140.....1P.....9
MBV106.....1P.....19	MCH210.....2P.....15	MCL140N.....1P+N.....9
MBV110.....1P.....19	MCH213.....2P.....15	MCL150.....1P.....9
MBV116.....1P.....19	MCH216.....2P.....15	MCL150N.....1P+N.....9
MBV120.....1P.....19	MCH220.....2P.....15	MCL163.....1P.....9
MBV125.....1P.....19	MCH225.....2P.....15	MCL163N.....1P+N.....9
MBV132.....1P.....19	MCH232.....2P.....15	MCL201.....2P.....9
MBV140.....1P.....19	MCH240.....2P.....15	MCL202.....2P.....9
MBV150.....1P.....19	MCH250.....2P.....15	MCL204.....2P.....9
MBV163.....1P.....19	MCH263.....2P.....15	MCL206.....2P.....9
MBV206.....2P.....19	MCH301.....3P.....16	MCL208.....2P.....9
MBV210.....2P.....19	MCH302.....3P.....16	MCL210.....2P.....9
MBV216.....2P.....19	MCH304.....3P.....16	MCL213.....2P.....9
MBV220.....2P.....19	MCH306.....3P.....16	MCL216.....2P.....9
MBV225.....2P.....19	MCH308.....3P.....16	MCL220.....2P.....9
MBV232.....2P.....19	MCH310.....3P.....16	MCL225.....2P.....9
MBV240.....2P.....19	MCH313.....3P.....16	MCL232.....2P.....9
MBV250.....2P.....19	MCH316.....3P.....16	MCL240.....2P.....9
MBV263.....2P.....19	MCH320.....3P.....16	MCL250.....2P.....9
MBV306.....3P.....19	MCH325.....3P.....16	MCL263.....2P.....9
MBV310.....3P.....19	MCH332.....3P.....16	MCL301.....2P.....10
MBV316.....3P.....19	MCH340.....3P.....16	MCL302.....3P.....10
MBV320.....3P.....19	MCH350.....3P.....16	MCL304.....3P.....10
MBV325.....3P.....19	MCH363.....3P.....16	MCL306.....3P.....10
MBV332.....3P.....19	MCH401.....4P.....16	MCL308.....3P.....10
MBV340.....3P.....19	MCH402.....4P.....16	MCL310.....3P.....10
MBV350.....3P.....19	MCH404.....4P.....16	MCL313.....3P.....10
MBV363.....3P.....19	MCH406.....4P.....16	MCL316.....3P.....10
MCH101.....1P.....15	MCH408.....4P.....16	MCL320.....3P.....10
MCH101N.....1P+N.....15	MCH410.....4P.....16	MCL325.....3P.....10
MCH102.....1P.....15	MCH413.....4P.....16	MCL332.....3P.....10
MCH102N.....1P+N.....15	MCH416.....4P.....16	MCL340.....3P.....10
MCH104.....1P.....15	MCH420.....4P.....16	MCL350.....3P.....10
MCH104N.....1P+N.....15	MCH425.....4P.....16	MCL363.....3P.....10
MCH106.....1P.....15	MCH432.....4P.....16	MCL401.....4P.....10
MCH106N.....1P+N.....15	MCH440.....4P.....16	MCL402.....4P.....10
MCH108.....1P.....15	MCH450.....4P.....16	MCL404.....4P.....10

MCL406.....4P.....10	MDH201.....2P.....17	MDL163N.....1P+N.....11
MCL408.....4P.....10	MDH202.....2P.....17	MDL201.....2P.....11
MCL410.....4P.....10	MDH204.....2P.....17	MDL202.....2P.....11
MCL413.....4P.....10	MDH206.....2P.....17	MDL204.....2P.....11
MCL416.....4P.....10	MDH208.....2P.....17	MDL206.....2P.....11
MCL420.....4P.....10	MDH210.....2P.....17	MDL208.....2P.....11
MCL425.....4P.....10	MDH213.....2P.....17	MDL210.....2P.....11
MCL432.....4P.....10	MDH216.....2P.....17	MDL213.....2P.....11
MCL440.....4P.....10	MDH220.....2P.....17	MDL216.....2P.....11
MCL450.....4P.....10	MDH225.....2P.....17	MDL220.....2P.....11
MCL463.....4P.....10	MDH232.....2P.....17	MDL225.....2P.....11
MCV106.....1P.....20	MDH301.....3P.....17	MDL232.....2P.....11
MCV110.....1P.....20	MDH302.....3P.....17	MDL240.....2P.....11
MCV116.....1P.....20	MDH304.....3P.....17	MDL250.....2P.....11
MCV120.....1P.....20	MDH306.....3P.....17	MDL263.....2P.....11
MCV125.....1P.....20	MDH308.....3P.....17	MDL301.....3P.....11
MCV132.....1P.....20	MDH310.....3P.....17	MDL302.....3P.....11
MCV140.....1P.....20	MDH313.....3P.....17	MDL304.....3P.....11
MCV150.....1P.....20	MDH316.....3P.....17	MDL306.....3P.....11
MCV163.....1P.....20	MDH320.....3P.....17	MDL308.....3P.....11
MCV206.....2P.....20	MDH325.....3P.....17	MDL310.....3P.....11
MCV210.....2P.....20	MDH332.....3P.....17	MDL313.....3P.....11
MCV216.....2P.....20	MDH401.....4P.....18	MDL316.....3P.....11
MCV220.....2P.....20	MDH402.....4P.....18	MDL320.....3P.....11
MCV225.....2P.....20	MDH404.....4P.....18	MDL325.....3P.....11
MCV232.....2P.....20	MDH406.....4P.....18	MDL332.....3P.....11
MCV240.....2P.....20	MDH408.....4P.....18	MDL340.....3P.....11
MCV250.....2P.....20	MDH410.....4P.....18	MDL350.....3P.....11
MCV263.....2P.....20	MDH413.....4P.....18	MDL363.....3P.....11
MCV306.....3P.....20	MDH416.....4P.....18	MDL401.....4P.....12
MCV310.....3P.....20	MDH420.....4P.....18	MDL402.....4P.....12
MCV316.....3P.....20	MDH425.....4P.....18	MDL404.....4P.....12
MCV320.....3P.....20	MDH432.....4P.....18	MDL406.....4P.....12
MCV325.....3P.....20	MDL101.....1P.....10	MDL408.....4P.....12
MCV332.....3P.....20	MDL101N.....1P+N.....11	MDL410.....4P.....12
MCV340.....3P.....20	MDL102.....1P.....10	MDL413.....4P.....12
MCV350.....3P.....20	MDL102N.....1P+N.....11	MDL416.....4P.....12
MCV363.....3P.....20	MDL104.....1P.....10	MDL420.....4P.....12
MDH101.....1P.....16	MDL104N.....1P+N.....11	MDL425.....4P.....12
MDH101N.....1P+N.....17	MDL106.....1P.....10	MDL432.....4P.....12
MDH102.....1P.....16	MDL106N.....1P+N.....11	MDL440.....4P.....12
MDH102N.....1P+N.....17	MDL108.....1P.....10	MDL450.....4P.....12
MDH104.....1P.....16	MDL108N.....1P+N.....11	MDL463.....4P.....12
MDH104N.....1P+N.....17	MDL110.....1P.....10	MFM05.....5LC.....29
MDH106.....1P.....16	MDL110N.....1P+N.....11	MFM10.....10LC.....29
MDH106N.....1P+N.....17	MDL113.....1P.....10	MFM15.....15LC.....29
MDH108.....1P.....16	MDL113N.....1P+N.....11	MFM20.....20LC.....29
MDH108N.....1P+N.....17	MDL116.....1P.....10	MFM30.....30LC.....29
MDH110.....1P.....16	MDL116N.....1P+N.....11	MFM35.....35LCS.....29
MDH110N.....1P+N.....17	MDL120.....1P.....10	MFM40.....40LCS.....29
MDH113.....1P.....16	MDL120N.....1P+N.....11	MFM45.....45LCS.....29
MDH113N.....1P+N.....17	MDL125.....1P.....10	MS 1001N.....1P+N.....31
MDH116.....1P.....16	MDL125N.....1P+N.....11	MS1001.....1P.....28
MDH116N.....1P+N.....17	MDL132.....1P.....10	MS1001N.....1P+N.....28
MDH120.....1P.....16	MDL132N.....1P+N.....11	MS1002.....1P+N.....28
MDH120N.....1P+N.....17	MDL140.....1P.....10	MS1003.....3P.....28
MDH125.....1P.....16	MDL140N.....1P+N.....11	MS1004.....3P+N.....28
MDH125N.....1P+N.....17	MDL150.....1P.....10	PD2.....28
MDH132.....1P.....16	MDL150N.....1P+N.....11	SML4.....-.....28
MDH132N.....1P+N.....17	MDL163.....1P.....10	

Eaton's Electrical business is a global leader in electrical control, power distribution, and industrial automation products and services. Through advanced product development, world-class manufacturing methods, and global engineering services and support, Eaton's Electrical business provides customer-driven solutions under brand names such as Cutler-Hammer®, Durant®, Heinemann®, Holec® and MEM®, which globally serve the changing needs of the industrial, utility, light commercial, residential, and OEM markets. For more information, visit www.eatonelectrical.com.

Eaton Corporation is a diversified industrial manufacturer with 2004 sales of \$9.8 billion. Eaton is a global leader in fluid power systems and services for industrial, mobile and aircraft equipment; electrical systems and components for power quality, distribution and control; automotive engine air management systems, powertrain solutions and specialty controls for performance, fuel economy and safety; and intelligent truck drivetrain systems for safety and fuel economy. Eaton has 55,000 employees and sells products to customers in more than 125 countries. For more information, visit www.eaton.com.

Eaton Electric Limited
Reddings Lane
Birmingham B11 3EZ
United Kingdom

Customer Support Centre
Tel.: +44 (0)8700 545 333
Fax: +44 (0)8700 540 333
ukcommorders@eaton.com

Eaton Electric B.V.
PO Box 23
7550 AA Hengelo
The Netherlands

Customer Support Centre
Tel.: +31 (0)74 246 7066
Fax: +31 (0)74 246 7070
c-heuropesupport@eaton.com

