

Thank you for making a commitment to sharpening with DMT® products.

To All Who Share Our Zeal for Sharpening

We understand that when you purchase a world-class diamond sharpener you expect your investment to provide many years of reliable performance, but at DMT® we're looking to exceed that expectation. We want to develop a long-standing relationship with you—a partnership for a lifetime of sharpening excellence. In order for this to happen, we have to make sure that you achieve the best possible results from day one, and enjoy continued success as you expand your sharpening needs. That's why, as an industry leader, we are set up to do more than just help you choose the right sharpener for every job; we provide ongoing education, tutorials, video demonstrations and more. Just go on line any time, or call us during business hours to speak with a real person. That's right, a *real* person, because we're always happy to talk with you about sharpening!

The Innovations Never Stop

Sharpening technology has been around since the Bronze Age, so one might think that by now there's not much left to improve. And yet for DMT®, the innovations just keep coming. In 1976, we invented the first interrupted diamond sharpening surface—the signature polka-dot design that ensures cleaner, more efficient sharpening. From there we innovated our best-selling Diafold® sharpener, followed by the high-tech DuoSharp® line, then the Diamond Wave™, and our most recently patented Magna-Guide™ sharpening system. Made in the USA and recognized internationally, our products have earned accolades for excellence in design, innovation, and quality. Among them are the *International Spark Design Award™*, the *International Practical World Exhibition Prize*, the *Blade Magazine Accessory of the Year Trophy*, the *HANDY Magazine Innovation Award* and more.

Please take a look at our complete line of superior sharpening products, and contact us any time by phone or email, or visit us on the web at www.dmtsharp.com.



Mark Brandon
President

Our Commitment

DMT® is dedicated to a single objective: make the world's best diamond sharpeners. Our commitment is to innovate and build products with only high-quality materials using the best practices in manufacturing. We stand behind each sharpener with a guarantee to be free from defects, or replaced at no additional cost to the customer.



Diamond abrasives provide the fastest, easiest and most effective way to sharpen an edge. Unrivaled in both performance and durability, DMT® brand sharpeners have earned the reputation as the best sharpening products on the planet.

The DMT® Difference

Since 1976, DMT® has been in business to do just one thing: make the world's best diamond sharpeners. Product innovations such as our signature polka-dot interrupted surface, and others with our continuous surface of high-performance diamond, are praised worldwide for their superior quality. From pocket-sized whetstones to heavy-duty bench stones, the difference arrives time and again through our undivided pursuit of sharpening excellence.

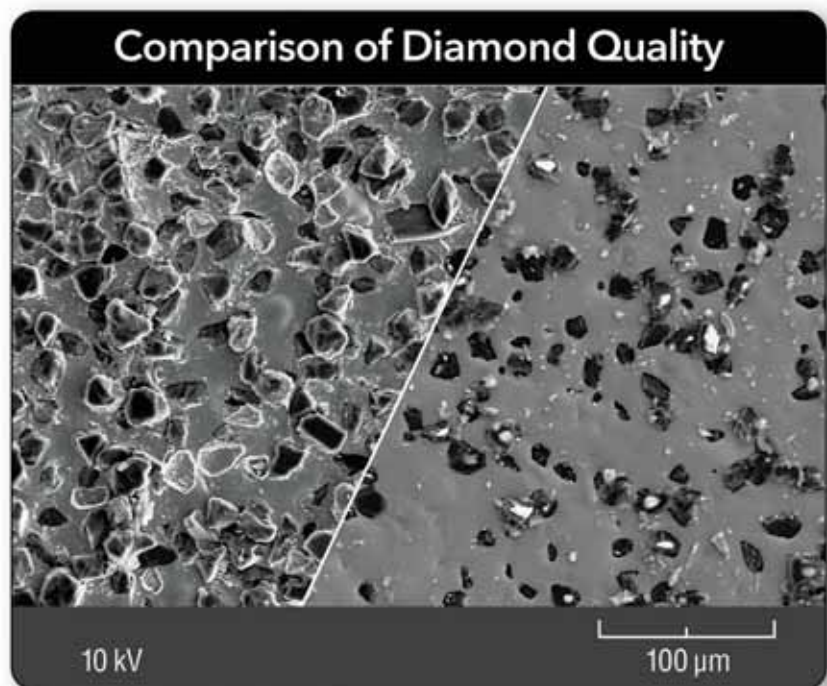
Quality Must Be Manufactured, Not Fabricated

Diamond Coverage differs widely from one manufacturer to the next. For long-lasting performance, DMT® makes certain that each sharpening surface carries the most diamonds per square inch in the industry.

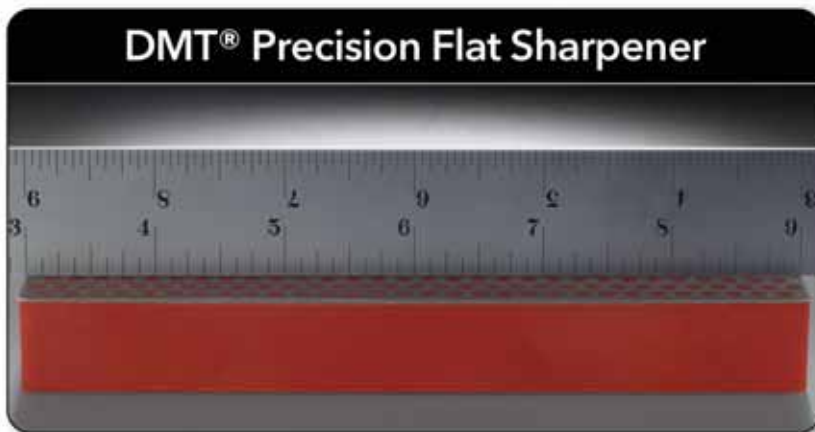
Diamond Uniformity is also key to sharpener performance. DMT® uses a proprietary process that ensures near-perfect consistency in grit size. The result is a micronized monocrystalline diamond that covers evenly across the sharpening surface to prove effective with every use, year after year.

Beware of imitators!

The DMT® sharpening surface (left) exhibits full coverage and the diamonds show striking consistency in size to ensure peak performance and durability. The copycat surface (right) carries a sparse, patchy coating made from a jumble of different sized diamonds.

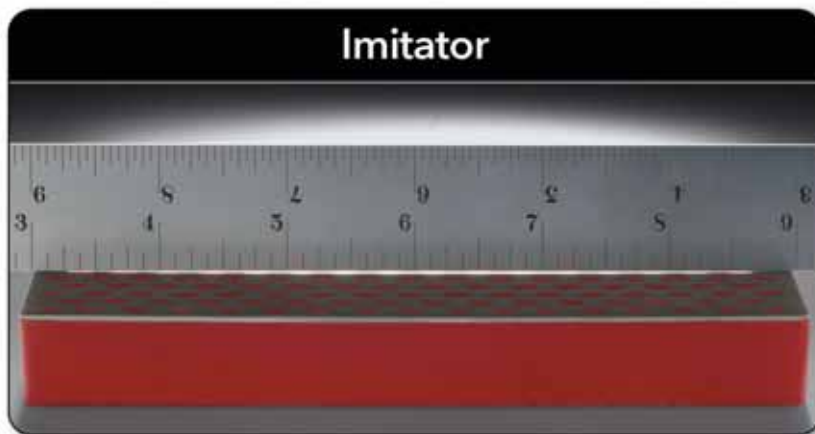


Surface Flatness can mean the difference between a well-honed tool and one that is barely serviceable. Flat surfaces maintain consistent, even contact with the edge to produce a bevel that carries the same degree of sharpness from end to end. DMT® sharpeners are engineered to be the flattest on the market, and built to outlast other products, which are variable in surface, and often warped, hollowed or grooved.



DMT® gives it to you straight.

Like all DMT® sharpeners, the Diamond Whetstone™ proves flat every time. When tested against a precision straight edge, no light appears between the sharpening surface and straight edge.



Imitators just don't measure up.

The copycat whetstone may look similar to a Diamond Whetstone™, but when tested for flatness the difference is obvious. The light shines through to reveal a surface that fails to prove flat.

Start Experiencing the Difference Today

When compared under every condition related to diamond quality and sharpener performance, it becomes clear that DMT® products truly have no competition. Proving more than just the best way to produce a first-rate edge, our sharpeners save you from coping with an entire toolbox of second-rate ones. That's why you owe it to yourself, and your tools, to choose nothing less than a DMT® diamond sharpener. Take a look at our full line of products and place your order today!

BENCH STONES provide high-performance sharpening with precision-flat interrupted and continuous surfaces in a broad range of grits and sizes. DMT® bench stone models include Diamond Whetstone™, Dia-Sharp® and DuoSharp® brand sharpeners.

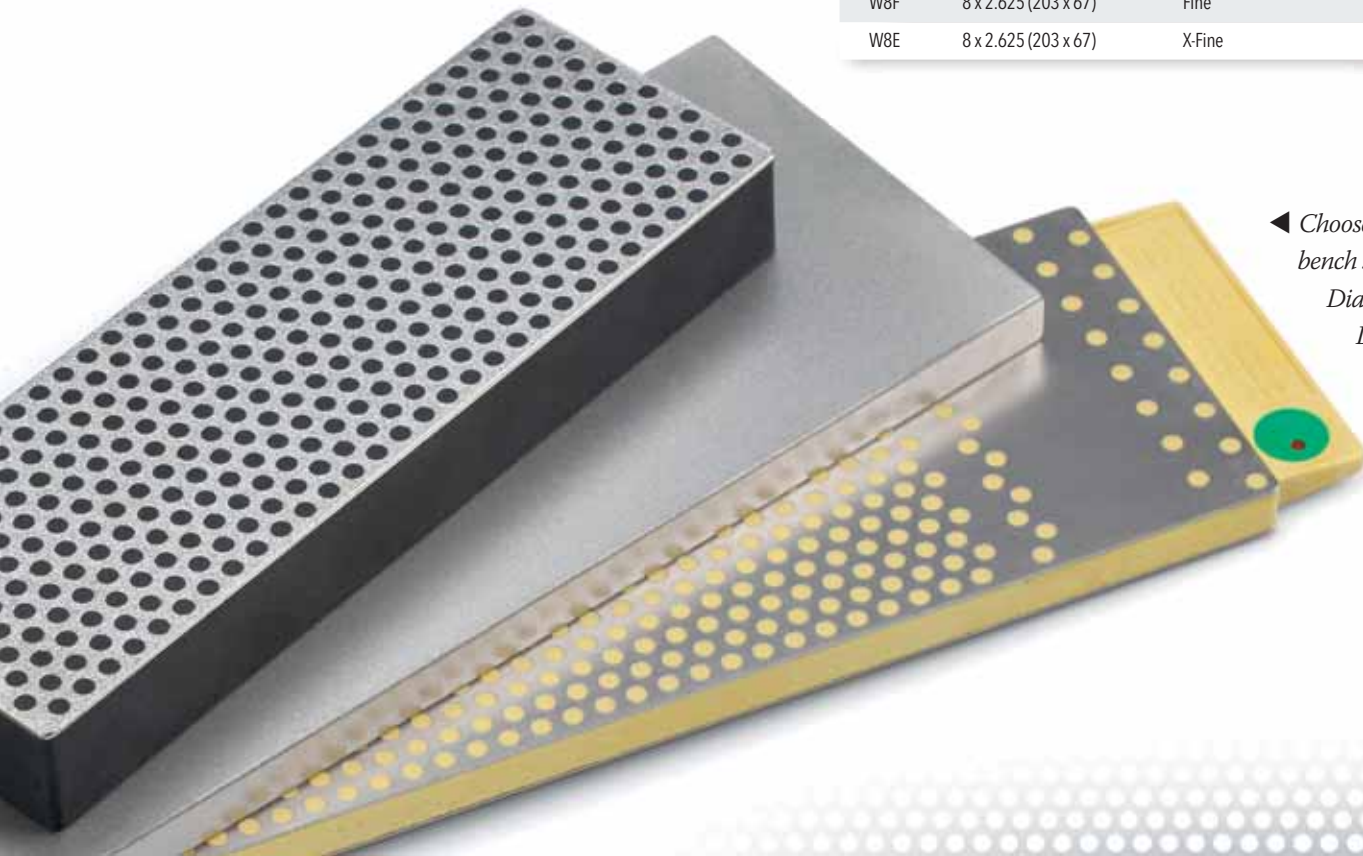


A

A Diamond Whetstone™ Models

Featuring the signature polka-dot pattern innovated by DMT®, Diamond Whetstone™ sharpeners are often imitated in appearance, but never equalled in quality or performance. The interrupted surface of tiny wells trap metal debris to ensure clean, continuous edge contact while the superior diamond does its work. For the quickest, cleanest sharpening, there truly is no substitute. Offered in 2 sizes and 4 grits with an attractive hardwood box or optional plastic case on 6-inch models.

MODEL NUMBER	SHARPENER SIZE <i>inches (millimeters)</i>	DIAMOND GRIT <i>X=extra, XX=extra-extra</i>	SPECIAL FEATURES <i>(see text for full description)</i>
W6X	6 x 2 (152 x 51)	X-Coarse	Hardwood box
W6C	6 x 2 (152 x 51)	Coarse	Hardwood box
W6F	6 x 2 (152 x 51)	Fine	Hardwood box
W6E	6 x 2 (152 x 51)	X-Fine	Hardwood box
W6XP	6 x 2 (152 x 51)	X-Coarse	Plastic case
W6CP	6 x 2 (152 x 51)	Coarse	Plastic case
W6FP	6 x 2 (152 x 51)	Fine	Plastic case
W6EP	6 x 2 (152 x 51)	X-Fine	Plastic case
W8X	8 x 2.625 (203 x 67)	X-Coarse	Hardwood box
W8C	8 x 2.625 (203 x 67)	Coarse	Hardwood box
W8F	8 x 2.625 (203 x 67)	Fine	Hardwood box
W8E	8 x 2.625 (203 x 67)	X-Fine	Hardwood box



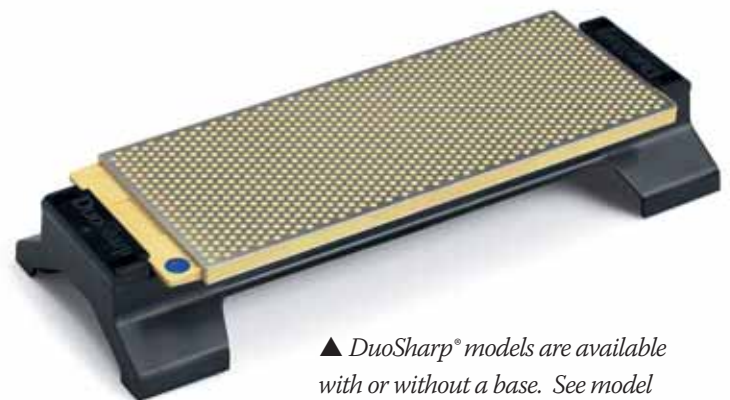
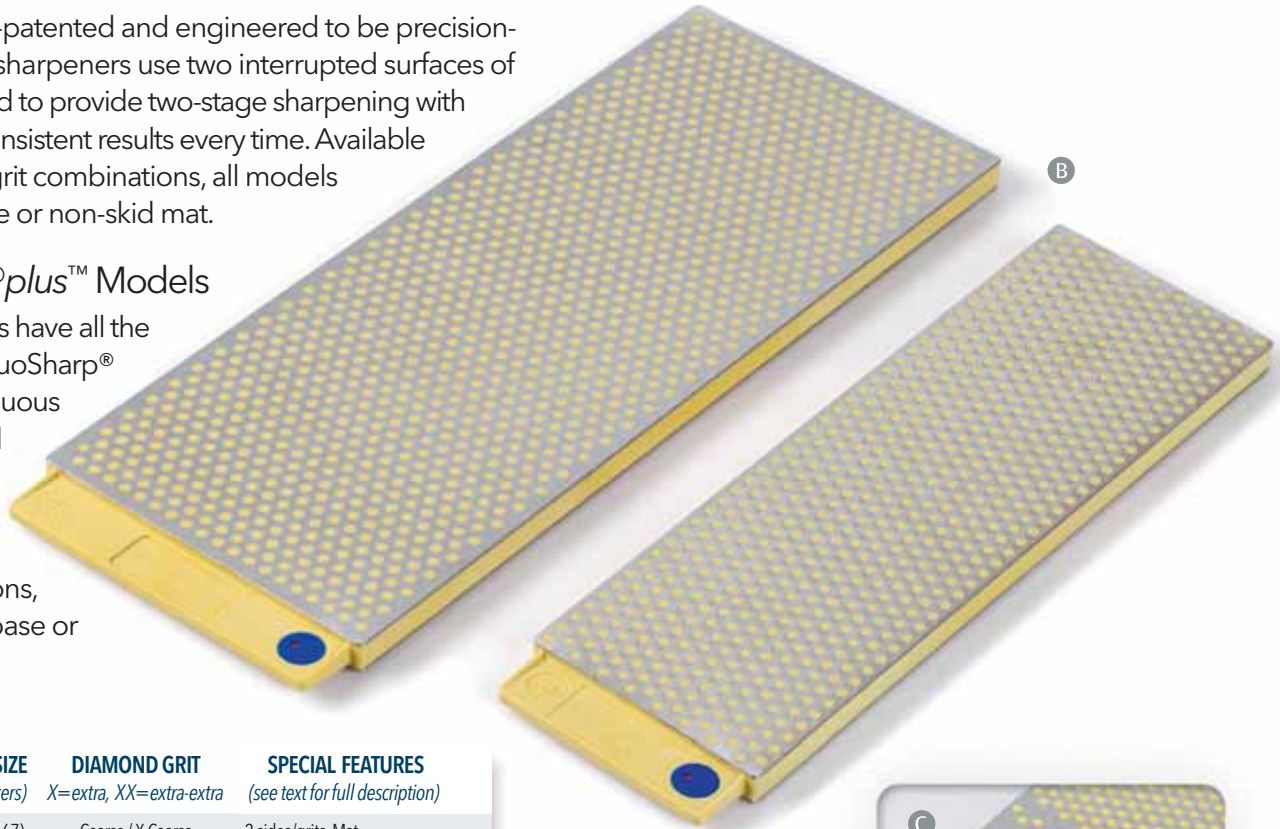
◀ Choose from 3 types of bench stones: (left to right) Diamond Whetstone™, Dia-Sharp® and DuoSharp®

B DuoSharp® Models

Innovative, multi-patented and engineered to be precision-flat, DuoSharp® sharpeners use two interrupted surfaces of superior diamond to provide two-stage sharpening with fast, clean and consistent results every time. Available in 2 sizes and 4 grit combinations, all models come with a base or non-skid mat.

C DuoSharp®plus™ Models

These sharpeners have all the features of our DuoSharp® line, plus a continuous zone of diamond abrasive for small and pointed tools. Offered in 4 grit combinations, each includes a base or non-skid mat.



MODEL NUMBER	SHARPENER SIZE <i>inches (millimeters)</i>	DIAMOND GRIT <i>X=extra, XX=extra-extra</i>	SPECIAL FEATURES <i>(see text for full description)</i>
W8CXNB	8 x 2.625 (203 x 67)	Coarse / X-Coarse	2 sides/grits, Mat
W8FCNB	8 x 2.625 (203 x 67)	Fine / Coarse	2 sides/grits, Mat
W8EFNB	8 x 2.625 (203 x 67)	X-Fine / Fine	2 sides/grits, Mat
W8ECNB	8 x 2.625 (203 x 67)	X-Fine / Coarse	2 sides/grits, Mat
W8CX-WB	8 x 2.625 (203 x 67)	Coarse / X-Coarse	2 sides/grits, Base
W8FC-WB	8 x 2.625 (203 x 67)	Fine / Coarse	2 sides/grits, Base
W8EF-WB	8 x 2.625 (203 x 67)	X-Fine / Fine	2 sides/grits, Base
W8EC-WB	8 x 2.625 (203 x 67)	X-Fine / Coarse	2 sides/grits, Base
WM8CX	8 x 2.625 (203 x 67)	Coarse / X-Coarse	2 sides/grits, Continuous zone, Mat
WM8FC	8 x 2.625 (203 x 67)	Fine / Coarse	2 sides/grits, Continuous zone, Mat
WM8EF	8 x 2.625 (203 x 67)	X-Fine / Fine	2 sides/grits, Continuous zone, Mat
WM8FC-WB	8 x 2.625 (203 x 67)	Fine / Coarse	2 sides/grits, Continuous zone, Base
WM8EF-WB	8 x 2.625 (203 x 67)	X-Fine / Fine	2 sides/grits, Continuous zone, Base
W250CXNB	10 x 4 (250 x 100)	Coarse / X-Coarse	2 sides/grits, Mat
W250FCNB	10 x 4 (250 x 100)	Fine / Coarse	2 sides/grits, Mat
W250EFNB	10 x 4 (250 x 100)	X-Fine / Fine	2 sides/grits, Mat
W250ECNB	10 x 4 (250 x 100)	X-Fine / Coarse	2 sides/grits, Mat
W250CX-WB	10 x 4 (250 x 100)	Coarse / X-Coarse	2 sides/grits, Base
W250FC-WB	10 x 4 (250 x 100)	Fine / Coarse	2 sides/grits, Base
W250EF-WB	10 x 4 (250 x 100)	X-Fine / Fine	2 sides/grits, Base
W250EC-WB	10 x 4 (250 x 100)	X-Fine / Coarse	2 sides/grits, Base

▲ DuoSharp® models are available with or without a base. See model numbers ending with "WB" to select a DuoSharp® with a base.

D



D Dia-Sharp® Bench Stones

For those who prefer a continuous diamond surface, especially for sharpening small or pointed tools, these bench stones outperform them all. Offered in 4 sizes and from 4 to 6 grits, all but double-sided models feature non-skid rubber feet.

E Diamond Wave™ Sharpener

The first to combine a convex and concave diamond surface in one, this uniquely designed, award-winning product affords longer, easier sharpening strokes over traditional slip stones. The juxtaposing pair of 1" to 1/16" tapered surfaces produce radii to accommodate a full set of curved edges. Available in 2 grits.



◀ Only DMT® offers you the same high-performance diamond coating on both interrupted and continuous sharpening surfaces. Choose from many models that feature the signature DMT® polka-dot pattern (left), or choose Dia-Sharp® (right) with full, continuous coverage.



E

▲ The award-winning design of Diamond Wave™ makes it the most useful and versatile sharpener for a wide range of curved edges, such as gouges, chisels and more.

MODEL NUMBER	SHARPENER SIZE inches (millimeters)	DIAMOND GRIT X=extra, XX=extra-extra	SPECIAL FEATURES (see text for full description)
D11X	11.5 x 2.5 (292 x 64)	X-Coarse	Rubber feet
D11C	11.5 x 2.5 (292 x 64)	Coarse	Rubber feet
D11F	11.5 x 2.5 (292 x 64)	Fine	Rubber feet
D11E	11.5 x 2.5 (292 x 64)	X-Fine	Rubber feet
D10C	10 x 4 (254 x 102)	Coarse	Rubber feet
D10F	10 x 4 (254 x 102)	Fine	Rubber feet
D10E	10 x 4 (254 x 102)	X-Fine	Rubber feet
D8XX	8 x 3 (203 x 76)	XX-Coarse	Rubber feet
D8X	8 x 3 (203 x 76)	X-Coarse	Rubber feet
D8C	8 x 3 (203 x 76)	Coarse	Rubber feet
D8F	8 x 3 (203 x 76)	Fine	Rubber feet
D8E	8 x 3 (203 x 76)	X-Fine	Rubber feet
D8EE	8 x 3 (203 x 76)	XX-Fine	Rubber feet
D6X	6 x 2 (152 x 51)	X-Coarse	Rubber feet
D6C	6 x 2 (152 x 51)	Coarse	Rubber feet
D6F	6 x 2 (152 x 51)	Fine	Rubber feet
D6E	6 x 2 (152 x 51)	X-Fine	Rubber feet
D6CX	6 x 2 (152 x 51)	Coarse / X-Coarse	2 sides/grits
D6FC	6 x 2 (152 x 51)	Fine / Coarse	2 sides/grits
D6EF	6 x 2 (152 x 51)	X-Fine / Fine	2 sides/grits
D6FX	6 x 2 (152 x 51)	Fine / X-Coarse	2 sides/grits
WAV-F	10 x 2.36 (254 x 60)	Fine	Curved surface, Mat
WAV-E	10 x 2.36 (254 x 60)	X-Fine	Curved surface, Mat

F Diamond Honing Cones

Tapered slip stones are great for honing tool and die sets as well as other curved edges like gouges, chisels, dental instruments and more. DMT® Diamond Honing Cones produce faster results with less effort by placing superior fine-grit diamond at just the right curvature. Offered in 3 sizes, individually or as a kit (G) that includes all 3 cones and a classic hardwood storage box.



◀ Honing Cones can be purchased individually or as a kit of three that includes a beautiful hardwood box.

ACCESSORIES

H Dia-Paste™ Compound

For achieving ultimate tool performance, there's no substitute for Dia-Paste™ diamond compound. Just a light application produces a polished, mirror finish that reduces friction and extends sharpness. Offered in 3 grits, syringes can be purchased individually or as a kit of 3.



I DuoBase™ Bench Stone Base

A great addition to our DuoSharp® stone or any 6" x 2" stone, this base features rubber feet to keep your work in place, and ample height to gain knuckle clearance for easier sharpening.



J Non-Skid Mat

For use with any bench stone up to 10 inches in length, this mat offers a space-saving way to keep your stone in place.



Add a base to your DuoSharp® sharpener or any other 6" x 2" stone, or keep just about any sharpener secure with our space-saving non-skid mat.

MODEL NUMBER	LENGTH* inches (millimeters)	DIAMOND GRIT <i>X=extra, XX=extra-extra</i>	SPECIAL FEATURES <i>(see text for full description)</i>
DCSFH	4 (102)	Fine	0.125 to 0.375" diameter cone
DCMF	6 (152)	Fine	0.375 to 0.75" dia. half-round cone
DCLF	8 (203)	Fine	0.75 to 1.25" dia. half-round cone
DCKF	(see above)	Fine	3 grit set, wood box
DP6	-	6 Micron	2 gram syringe
DP3	-	3 Micron	2 gram syringe
DP1	-	1 Micron	2 gram syringe
DPK	-	1, 3, and 6 Micron	3 grit set, 2 gram syringes
B8250	-	-	12" x 5" base, Rubber feet
SR009	-	-	10" x 4" mat, Non-skid coating

*All sharpener measurements exclude dimensions of handle

FOLDING SHARPENERS put uncompromising diamond performance in a compact, portable design. Our best-selling Diafold® brand sharpeners can tackle almost any edge – straight, curved or serrated – and their butterfly design lets you fold, stow and go!

Ⓐ Double-Sided Diafold®

Our most popular, versatile and convenient general-purpose sharpener, the Double-Sided Diafold® delivers two-stage sharpening with compact convenience. Two Diamond Whetstone™ sharpeners are combined to create a lightweight sharpener for all sorts of edges, from knives to scissors to axes and more. Models are available in 4 grit combinations.

Ⓑ Single-Sided Diafold®

Featuring the adaptable Diamond Whetstone™ sharpener with signature polka-dot interrupted surface, Diafold® is truly a multi-use sharpener for the home, camper, tool box and gardening shed. Offered in 4 grits, this trusty tool stores small and performs big.

Also available in a grooved hook-and-knife model (Ⓒ) that allows anglers to sharpen fishhooks.



▲ Some Diafold® models feature a diamond grit coated groove to easily sharpen fishhooks

MODEL NUMBER	SHARPENER SIZE <i>inches (millimeters)</i>	DIAMOND GRIT <i>X=extra, XX=extra-extra</i>	SPECIAL FEATURES <i>(see text for full description)</i>
FWCX	4.33 x 0.875 (110 x 22)	Coarse / X-Coarse	2 sides/grits
FWFC	4.33 x 0.875 (110 x 22)	Fine / Coarse	2 sides/grits
FWFE	4.33 x 0.875 (110 x 22)	X-Fine / Fine	2 sides/grits
FWEEE	4.33 x 0.875 (110 x 22)	X-Fine / XX-Fine	2 sides/grits
FWX	4.33 x 0.875 (110 x 22)	X-Coarse	
FWC	4.33 x 0.875 (110 x 22)	Coarse	
FWF	4.33 x 0.875 (110 x 22)	Fine	
FWE	4.33 x 0.875 (110 x 22)	X-Fine	
FFHWC	4.33 x 0.875 (110 x 22)	Coarse	Hook sharpening groove
FFHWF	4.33 x 0.875 (110 x 22)	Fine	Hook sharpening groove

◀ All Diafold® models feature a butterfly folding design for maximum portability and convenience

D Diafold® Serrated Sharpener

Sharpening serrated knives is easy with a Diafold® diamond serrated sharpener. And better still, this foldable companion also serves triple duty as a portable mini-steel, gut hook sharpener and conical file. Available in 3 grits.

E Diafold® Flat File Sharpener

This single-sided diamond flat file is perfect for confined, narrow applications in the home, shop or garden. And since it's a Diafold® folding sharpener, it stores away small for portable convenience. Offered in 2 grits.

F Diafold® Chain Saw Sharpener

More than just a workhorse for everyday chain saw maintenance, it's a multi-use tool for getting into all those tight spots. Available in coarse grit and 3 diameters.



MODEL NUMBER	LENGTH* inches (millimeters)	DIAMOND GRIT X=extra, XX=extra-extra	SPECIAL FEATURES (see text for full description)
FSKC	4.44 (113)	Coarse	0.25 to 0.0625" diameter taper
FSKF	4.44 (113)	Fine	0.25 to 0.0625" diameter taper
FSKE	4.44 (113)	X-Fine	0.25 to 0.0625" diameter taper
FFC	4.44 (113)	Coarse	0.75 to 0.25" tapered file
FFF	4.44 (113)	Fine	0.75 to 0.25" tapered file
FCSSC	4.44 (113)	Coarse	5/32" diameter rod
FCS6C	4.44 (113)	Coarse	6/32" diameter rod
FCS7C	4.44 (113)	Coarse	7/32" diameter rod

*All sharpener measurements exclude dimensions of handle

▲ The combination of high-performance diamond grit and the tapered Diafold® design makes serrated sharpening easy. Just match the serration against the corresponding taper of the sharpener, and make half-inch strokes with a simple twist of the wrist.



POCKET SHARPENERS deliver simplicity and utility for sharpening any time, anywhere. Available in both interrupted and continuous diamond surfaces, DMT® pocket models include Mini-Sharp®, Mini-Hone®, Diamond Whetstone™ and Dia-Sharp® brand sharpeners.

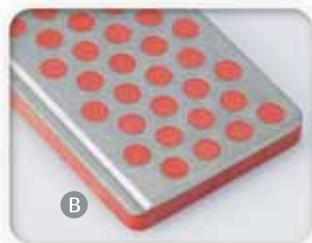


A

A Diamond Mini-Sharp® Models

The sharpener that travels with you, Diamond Mini-Sharp® features a folding handle to make it ultra portable, plus a swivel ring that attaches conveniently to a coat, backpack, or key chain. Offered in 4 grits.

Also available in a grooved model (B) that allows anglers to sharpen fishhooks. Offered in 2 grits.



B

◀ *Diamond Angler Mini-Sharp® features a grooved edge to easily sharpen fishhooks.*



C

C Mini Diamond Whetstone™ Models

A portable enhancement to any tool bag or glovebox, the 70mm stone delivers quick edge repair any time, anywhere. Available in 3 grits, individually or as a kit of 3.



D

D Diamond Whetstone™ Models

Surely the most distinguished tool to fit in your pocket, this handy 4" diamond sharpener comes in a handsome leather sheath. Offered in 5 grits, individually or as a kit of 4.

Some models also feature a continuous diamond zone (E) for sharpening pointed or narrow-edged tools. Available in 3 grits.



E

◀ *Some 4-inch Diamond Whetstone™ models feature a continuous diamond zone for added versatility.*

▼ *Mini-Sharp® folds away to just a few inches and the swivel ring keeps it handy for the road or trail.*

MODEL NUMBER	SHARPENER SIZE inches (millimeters)	DIAMOND GRIT X=extra, XX=extra-extra	SPECIAL FEATURES (see text for full description)
F70X	2.76 x 0.98 (70 x 25)	X-Coarse	Swivel key ring
F70C	2.76 x 0.98 (70 x 25)	Coarse	Swivel key ring
F70F	2.76 x 0.98 (70 x 25)	Fine	Swivel key ring
F70E	2.76 x 0.98 (70 x 25)	X-Fine	Swivel key ring
FF70C	2.76 x 0.98 (70 x 25)	Coarse	Hook sharpening groove
FF70F	2.76 x 0.98 (70 x 25)	Fine	Hook sharpening groove
W7C	2.76 x 0.98 (70 x 25)	Coarse	
W7F	2.76 x 0.98 (70 x 25)	Fine	
W7E	2.76 x 0.98 (70 x 25)	X-Fine	
W7EFC	2.76 x 0.98 (70 x 25)	X-Fine, Fine, Coarse	3 grit set
W4X	4.33 x 0.875 (110 x 22)	X-Coarse	Leather pouch
W4C	4.33 x 0.875 (110 x 22)	Coarse	Leather pouch
W4F	4.33 x 0.875 (110 x 22)	Fine	Leather pouch
W4E	4.33 x 0.875 (110 x 22)	X-Fine	Leather pouch
W4EE	4.33 x 0.875 (110 x 22)	XX-Fine	Leather pouch
W4K	4.33 x 0.875 (110 x 22)	X-Coarse, Coarse, Fine, X-Fine	4 grit set, Cont. zone, Fabric pouch
WMC	4.33 x 0.875 (110 x 22)	Coarse	Continuous zone, Leather pouch
WMF	4.33 x 0.875 (110 x 22)	Fine	Continuous zone, Leather pouch
WME	4.33 x 0.875 (110 x 22)	X-Fine	Continuous zone, Leather pouch

F Diamond Whetstone™ Ski Models

Pocket-sized for the slopes, our 4" ski sharpener is available in 4 grits and includes a water resistant pouch. Or lighter still, the 70mm Mini Diamond Whetstone™ (G) fits anywhere and comes in 5 grits, individually or in kits of 3.

H Dia-Sharp® Models

Perfect for small edges and pointed tools, this 4" continuous-surface stone works big in tight spots. Offered in 3 grits.

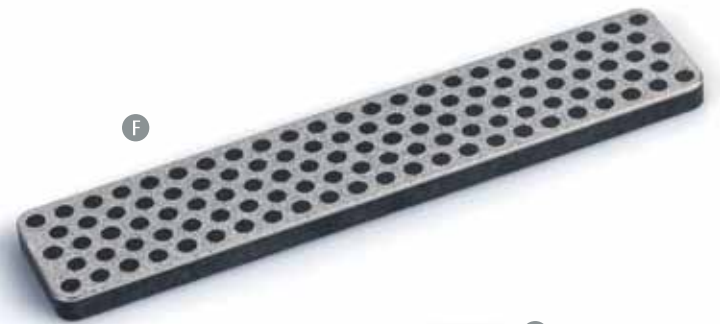
I Dia-Sharp® Credit Card Models

For on-the-go edge repair, this sharpener fits nicely in your wallet. Offered in 3 grits, and includes a vinyl carry sleeve.

J Dia-Sharp® Mini-Hone® Models

Suited for tight areas, these continuous-surface stones work well on everyday edges. Straight and offset models are available in 3 grits, individually or in kits of 3.

MODEL NUMBER	SHARPENER SIZE <i>inches (millimeters)</i>	DIAMOND GRIT <i>X=extra, XX=extra-extra</i>	SPECIAL FEATURES <i>(see text for full description)</i>
WS7XX	2.76 x 0.98 (70 x 25)	XX-Coarse	Ski model
WS7X	2.76 x 0.98 (70 x 25)	X-Coarse	Ski model
WS7C	2.76 x 0.98 (70 x 25)	Coarse	Ski model
WS7F	2.76 x 0.98 (70 x 25)	Fine	Ski model
WS7K	2.76 x 0.98 (70 x 25)	X-Fine, Fine, Coarse	3 grit set, Ski model
WS7K2	2.76 x 0.98 (70 x 25)	XX-Coarse, X-Coarse, Coarse	3 grit set, Ski model
WS4XX	4.33 x 0.875 (110 x 22)	XX-Coarse	Ski model
WS4X	4.33 x 0.875 (110 x 22)	X-Coarse	Ski model
WS4C	4.33 x 0.875 (110 x 22)	Coarse	Ski model
WS4F	4.33 x 0.875 (110 x 22)	Fine	Ski model
D4C	4 x 0.875 (102 x 22)	Coarse	
D4F	4 x 0.875 (102 x 22)	Fine	
D4E	4 x 0.875 (102 x 22)	X-Fine	
D3C	3.25 x 2 (83 x 51)	Coarse	Vinyl sleeve
D3F	3.25 x 2 (83 x 51)	Fine	Vinyl sleeve
D3E	3.25 x 2 (83 x 51)	X-Fine	Vinyl sleeve
D2C	2.5 x 0.75 (63.5 x 19)	Coarse	
D2F	2.5 x 0.75 (63.5 x 19)	Fine	
D2E	2.5 x 0.75 (63.5 x 19)	X-Fine	
D2K	2.5 x 0.75 (63.5 x 19)	X-Fine, Fine, Coarse	3 grit set
OD2C	2.5 x 0.75 (63.5 x 19)	Coarse	Offset handle
OD2F	2.5 x 0.75 (63.5 x 19)	Fine	Offset handle
OD2E	2.5 x 0.75 (63.5 x 19)	X-Fine	Offset handle
OD2K	2.5 x 0.75 (63.5 x 19)	X-Fine, Fine, Coarse	3 grit set, Offset handle



GUIDED SHARPENING SYSTEMS ensure proper edge care by providing consistent results without fail—even for beginners! Available in a wide range of grit combinations, DMT® offers two easy-to-use systems: the *Aligner™* and *Diafold® Magna-Guide™* brand sharpening systems.



A *Aligner™* Easy Edge-Guided Sharpening Kits
Our flagship product for guided sharpening, the *Aligner™* provides all the right components to ensure consistent angles, precise edge bevels, and expert sharpening strokes. Carefully designed for the ultimate in fast, faultless knife sharpening, each *Aligner™* kit includes one *stone holder*, one *blade guide* and one, two or three 4" *Diamond Whetstone™* sharpeners. Three-stone kits come with either a rugged carry case (shown left) or fabric storage pouch, and a serrated attachment.

B *Diafold® Magna-Guide™* Kits

This portable, lightweight system consists of 3 elegantly integrated parts: the *Double-Sided Diafold®* sharpener, *Aligner™* blade guide and *magnetic angle guide*. The *Double-Sided Diafold®* offers portable, 2-stage sharpening at its best, the *blade guide* provides 7-angle adjustability for the right edge every time, and the *angle guide* joins them by way of its unique built-in magnet. Offered in kits of one or two double-sided sharpeners.

Portable, lightweight and easy to use, *Diafold® Magna-Guide™* lets you hone knives like a pro. Just clamp on the blade guide, choose a sharpening angle, and glide the sharpener along the blade while the angle guide does all the work to keep your angle true.

Diafold® Magna-Guide™ has three simple parts: a *Double-Sided Diafold®*, *Aligner™* blade guide, and *magnetic angle guide*.

MODEL NUMBER	SHARPENER SIZE inches (millimeters)	DIAMOND GRIT X=extra, XX=extra-extra	SPECIAL FEATURES (see text for full description)
A-PROKIT	4.33 x 0.875 (110 x 22)	X-Fine, Fine, Coarse	3 grit set, Serrated sharpener, Case
ADELUXE	4.33 x 0.875 (110 x 22)	X-Fine, Fine, Coarse	3 grit set, Serrated sharpener, Pouch
AKFC	4.33 x 0.875 (110 x 22)	Fine, Coarse	2 grit set
AKFNR	4.33 x 0.875 (110 x 22)	Fine	
DMG-4	4.33 x 0.875 (110 x 22)	XX-Fine/X-Fine, Fine/Coarse	4 grit set (2 double-sided models)
DMGEF	4.33 x 0.875 (110 x 22)	X-Fine / Fine	2 grit set (double-sided model)

C Aligner™ Components

For those who already own one or more 4" Diamond Whetstone™ sharpeners or otherwise wish to expand the versatility of their Aligner™ kit, DMT® offers individual components and accessories. In addition to the *Aligner™ blade guide* and *stone holder*, five grits are available, ranging from extra-extra fine to extra coarse.

D Magna-Guide™ Components

For those who already own one or more Double-Sided Diafold® sharpeners and wish to make sharpening easy enough for any family member or coworker, DMT® offers the *Aligner™ blade guide* and *magnetic angle guide*. With these two simple components, there will never be another dull edge in your house, campsite or workshop.

E Dia-Strike Diamond Broadhead™ Sharpener

Bow hunters know the importance of keeping broadheads at their sharpest and DMT® knows how to deliver. This innovative system integrates two 4" Diamond Whetstone™ sharpeners of equal grit with an adjustable stand that can be set to accommodate two-, three- or four-bladed broadheads. Available in 2 grits, this trailblazing sharpener is also offered as a kit that includes both grits.



The Aligner™ is comfortable to grip and easy to use. Just cradle the stone holder in your hand and glide your edge across the stone. Lefty or righty, it works the same for both sides of the blade—just flip it and repeat!



C

◀ Turn any Diafold® sharpener into a guided sharpening system with just two easy-to-use components.



D

◀ Now 33% larger, the versatile Dia-Strike™ hones broadheads with a matched pair of Diamond Whetstone™ sharpeners.



E

MODEL NUMBER	SHARPENER SIZE <i>inches (millimeters)</i>	DIAMOND GRIT <i>X=extra, XX=extra-extra</i>	SPECIAL FEATURES <i>(see text for full description)</i>
AHF	4.33 x 0.875 (110 x 22)	Fine	Collapsible stone holder
ABG	-	-	No-scratch clamp
A4X	4.33 x 0.875 (110 x 22)	X-Coarse	
A4C	4.33 x 0.875 (110 x 22)	Coarse	
A4F	4.33 x 0.875 (110 x 22)	Fine	
A4E	4.33 x 0.875 (110 x 22)	X-Fine	
A4EE	4.33 x 0.875 (110 x 22)	XX-Fine	
DMG	-	-	No-scratch clamp, Angle guide
D-STRIKE F	4.33 x 0.875 (110 x 22)	Fine	2 stones of matching grit
D-STRIKE E	4.33 x 0.875 (110 x 22)	X-Fine	2 stones of matching grit
D-STRIKE EF	4.33 x 0.875 (110 x 22)	X-Fine, Fine	2 grit set (4 stones of 2 paired grits)

SHARPENING STEELS work well to hone, align and extend the utility of knife edges. More than just a steel, Diamond Steel™ sharpeners feature a high-performance diamond surface that can truly sharpen a dulled knife to its peak condition.



A

A Diamond Steel™

Providing more than just the realigning function of a traditional butcher steel, the Diamond Steel™ utilizes a fast-honing diamond surface to quickly and conveniently produce sharper results. Each rod features a sanitary, single-piece plastic handle with hand guard and a color-coded ring for easy grit identification. Offered in 3 sizes and 2 grits.

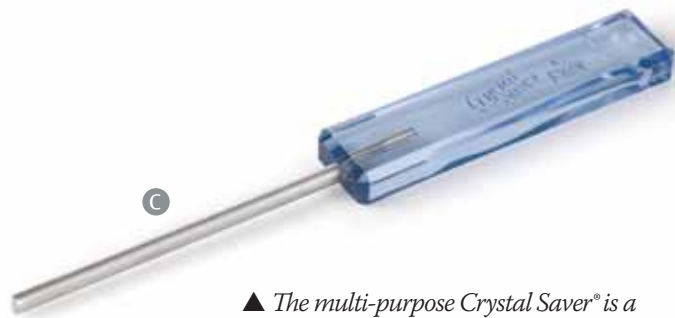


B

B Ceramic Steel

Through a patented process, the DMT® Ceramic Steel combines the fine abrasiveness of ceramic with lightweight aluminum to deliver a shatterproof, wear-resistant tool that provides the finest polished edge achievable by a bonded abrasive. With every convenience of a traditional butcher steel, this professional-grade product also features a sanitary, single-piece plastic handle with hand guard.

▲ All DMT® steels feature a sanitary, single-piece molded handle with 4-lobed guard for protection while in use and no-roll stability when rested on a countertop or prep surface.



C

C Crystal Saver® Multi-Purpose Sharpener

Its name is Crystal Saver®, but it does so much more than repair chipped crystal, glass and stoneware. This handy tool features a half-round diamond surface coarse enough to bring back the edge to almost anything in your kitchen drawer. For uncompromising results on small knives, use it in 2-stage sharpening along with a Diamond Steel™ or other fine-grit DMT® sharpener.

▲ The multi-purpose Crystal Saver® is a coarse-grit sharpener that can really save the day when mishaps occur. Designed to repair delicate crystal, this little hero works just as well on a dull paring knife.

MODEL NUMBER	SHARPENER SIZE inches (millimeters)	DIAMOND GRIT X=extra, XX=extra-extra	SPECIAL FEATURES (see text for full description)
DS4F	14 x 0.375 (356 x 10)	Fine	Safety guard, Hang ring
DS2F	12 x 0.375 (304 x 10)	Fine	Safety guard, Hang ring
DS2E	12 x 0.375 (304 x 10)	X-Fine	Safety guard, Hang ring
DS0F	10 x 0.375 (254 x 10)	Fine	Safety guard, Hang ring
CS2	12 x 0.5 (304 x 13)	n/a*	Ceramic, Safety guard, Hang ring
COO	Length: 4.25 (108)	Coarse	Half-round multi-purpose rod

* Ceramic steels carry a 7 micron (2200 mesh) abrasive that contains no diamond grit.

STONE CARE is an often overlooked yet critical part of proper edge care. While DMT® diamond sharpeners hold their flatness over continued use, traditional stones such as waterstones, oilstones and Arkansas stones need regular flattening to perform properly. Dia-Flat™ brand lapping plates utilize proprietary Diamond Hardcoat Technology™ and have extreme flatness to be effective on all types of traditional stones, large or small.



▲ Dia-Flat™ with DMT® Diamond Hardcoat Technology™ outlasts any other diamond coating on the market.

Dia-Flat™ Lapping Plate

The undisputed heavyweight champion above all other bonded abrasive products, this extraordinary tool is unmatched for bringing flatness back to any conventional waterstone, oilstone or Arkansas stone. No other product or method performs the job in less time or with less effort because only Dia-Flat™ features the revolutionary new DMT® Diamond Hardcoat Technology™ surface with 120-micron diamond grit.

Manufactured to outlast any other diamond coated product on the market, each Dia-Flat™ Lapping Plate is precision-ground to carry a consistent, even coating of micronized monocrystalline diamond, then hand-certified to prove flat to less than ± 0.0005 inches. The ample surface area of 40 square inches allows easy flattening of both large and small stones.

Dia-Flat™ Lapping Plate measures 10 x 4 inches (254 x 102 mm) and features a 120 micron grit. (Please use product code DIAFLAT to place an order or request additional information.)



▲ Manufactured to exacting tolerance, Dia-Flat™ Lapping Plates are hand certified, so each product arrives with its own certificate verifying absolute flatness to a variance of $< \pm 0.0005$ inches.



Which grit should I use?

This *very good* question is exactly why we pioneered the color-coding system for the sharpening industry. Colors provide quick and consistent identification, plus they help emphasize just how easy it can be to make the right choice. Grit selection should be based on just three factors: (1) the type of tool to be sharpened, (2) the condition of its edge, and (3) your desired level of sharpness. For professional results, choose at least two grits so you can step from the coarser to finer surfaces as you sharpen. Or choose a Double-Sided Diafold® or DuoSharp® sharpener, which have two sides to give you a pair of grits in every product. Whichever your preference, the chart below will help you choose the right grits.

If you're still not sure, just call Customer Service at **800-666-4368** or **508-481-5944** during regular business hours, Monday through Friday, 8:00 a.m. to 5:00 p.m. EST.



Extra Extra Coarse | Use this grit when aggressive stock removal is needed. Many professionals view it as a safe alternative to powered grinding because it cuts quickly without the heat build-up that ruins tool temper. And since our large bench stones have superior flatness ($\pm 0.001''$), this grit is also suitable for flattening water stones, Arkansas stones and synthetic stones. *Size: 120 micron, 120 mesh. Color code: silver.*



Extra Coarse | This option is best for rapid removal of metal on damaged edges or heavy-duty tools such as axes and mower blades. Often used as the first step for flattening the backs of chisels and plane irons, it's also great for flattening Japanese water stones. *Size: 60 micron, 220 mesh. Color code: black.*



Coarse | Recommended for dull tools, this grit will quickly restore an edge to cutting condition. With little effort, it makes fast work of the metal to form the desired bevel, so it's great for anyone who wants sharp tools that do the job without the need for edge refinement. *Size: 45 micron, 325 mesh. Color code: blue.*



Fine | Used widely for slightly dull tools and knives, this grit is best for everyday edge refinement. Many professionals, especially chefs and line cooks, consider it to be the all-purpose sharpener. Woodworkers and sportsmen who prefer two- and three-step sharpening call upon this grit for refinement in preparation of micro-beveling and polishing. *Size: 25 micron, 600 mesh. Color code: red.*



Extra Fine | If anything less than razor sharp is not enough, then this is your go-to grit. In the hands of a professional or serious enthusiast, it can refine and polish an edge to perform like a surgical instrument. And for anyone looking for an easy way to step into big-league edge care, we've made sure to include this grit on many of our double-sided models. *Size: 9 micron, 1200 mesh. Color code: green.*



Extra Extra Fine | Innovated in 2006, this grit remains the finest micronized bonded diamond abrasive on the planet. We introduced it for a very special class of customers: the sharpening enthusiasts who seek the ultimate edge—a polish above the highest polish! *Size: 3 micron, 8000 mesh. Color code: tan.*



DMT Diamond Machining Technology 85 Hayes Memorial Drive, Marlborough, MA 01752

tel: 800.666.4368 or 508.481.5944 | fax: 508.485.3924 | email: DMTcustomer@dmsharp.com | www.dmtsharp.com