

What's New in **WIRING DUCT**

Wiring duct is non-metallic hardware utilized in the wiring and assembly of typical electrical control panels. Wiring duct channels, covers and accessories simplify wire and cable management in control panels by separating circuits and routing wires and cables in a control panel from point to point (or to multiple points of usage).

Pages
434-444



Wiring Duct and Accessories

in a wide variety of types and options, to speed your wire/cable management and installation.

WIRING DUCT

Wiring Duct



433

c3controls Series WD Wiring Duct and accessories speed your wire/cable management and installation. The wide variety of types and options will increase your wiring productivity, reduce installation costs, and will give you the most attractive and organized control panels in the industry!

WIRING DUCT

Narrow Slot 434

Wide Slot 435

Unslotted (Solid Wall) 438

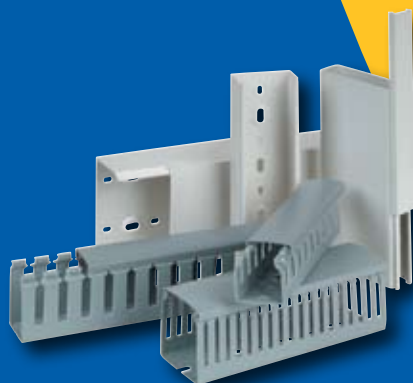
Replacement Components 439

Accessories 440

Specifications 441

Dimensions 442

Wire Fill Capacity 444



NOTE: The scope (range, description, price, specifications, dimensions, etc.) of the product featured in this section is subject to change without notice. Refer to www.c3controls.com for product updates.

Conformity to Standards:

UL 1565
CSA C22.2 No. 18.5-02
IEC 61084-2-1

Certifications:

UL File #: Consult Factory
CE Marked (per EU Low Voltage Directive 2006/95/EC and 93/68/EEC)



Visit www.c3controls.com to download product certifications.

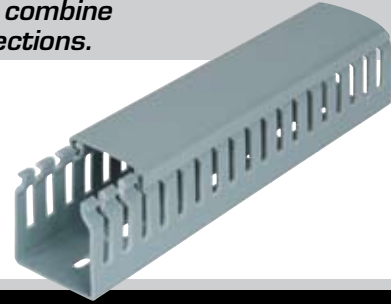
IT'S EASY TO BUILD YOUR OWN WIRING DUCT

Simply pick the code number from each of the sections below and combine them to build your part number. See page 6 for more detailed directions.

Narrow (Thin) Slot Wiring Duct

WD - B **N**
I II III IV V

Example: To build one of our most popular Wiring Ducts, the part number would be **WD + B + III + N + V** or **WD-B40X40N**



I. WIRING DUCT

CODE	DESCRIPTION
WD	Wiring Duct

II. WIRING DUCT TYPE

CODE	DESCRIPTION
B	Rigid, "U" Shaped Duct with Non-Slip Cover

III. DIMENSION

CODE	DIMENSIONS IN MM (WIDTH X HEIGHT), LENGTH: 2 METERS	DIMENSIONS IN INCHES (WIDTH X HEIGHT), LENGTH: 6'-6.75"	STANDARD PACKAGE QTY.	PRICE/PC.
25X30	25 x 30	0.98 x 1.18	12	\$10.50
25X40	25 x 40	0.98 x 1.57	12	\$13.00
25X60	25 x 60	0.98 x 2.36	8	\$14.00
25X80	25 x 80	0.98 x 3.15	6	\$17.50
25X100	25 x 100	0.98 x 3.94	6	\$20.25
40X40	40 x 40	1.57 x 1.57	8	\$14.50
40X60	40 x 60	1.57 x 2.36	6	\$15.75
40X80	40 x 80	1.57 x 3.15	4	\$19.00
40X100	40 x 100	1.57 x 3.94	4	\$21.75
60X40	60 x 40	2.36 x 1.57	6	\$16.00
60X60	60 x 60	2.36 x 2.36	4	\$16.50
60X80	60 x 80	2.36 x 3.15	4	\$20.25
60X100	60 x 100	2.36 x 3.94	2	\$23.00
80X40	80 x 40	3.15 x 1.57	4	\$20.25
80X60	80 x 60	3.15 x 2.36	4	\$21.00
80X80	80 x 80	3.15 x 3.15	2	\$24.50
80X100	80 x 100	3.15 x 3.94	2	\$28.00
100X60	100 x 60	3.94 x 2.36	2	\$23.50
100X80	100 x 80	3.94 x 3.15	2	\$26.75
100X100	100 x 100	3.94 x 3.94	2	\$32.25
150X100	150 x 100	5.90 x 3.94	2	\$50.50

IV. SLOT TYPE

CODE	DESCRIPTION	DIMENSIONS
N	Narrow (Thin)	See Figure 1N on page 442

V. COLOR

CODE	DESCRIPTION
(Blank)	Grey
WH	White

DISCOUNT SCHEDULE **C**

SOME OF OUR POPULAR CONFIGURATIONS:

SERIES WD WIRING DUCT

CATALOG NUMBER	DESCRIPTION	PRICE
WD-B25X60N	Wiring Duct & Cover, W: 25mm (0.98") x H: 60mm (2.36"), Narrow (Thin) Slot, Grey	\$14.00
WD-B40X60N	Wiring Duct & Cover, W: 40mm (1.57") x H: 60mm (2.36"), Narrow (Thin) Slot, Grey	\$15.75
WD-B40X80N	Wiring Duct & Cover, W: 40mm (1.57") x H: 80mm (3.15"), Narrow (Thin) Slot, Grey	\$19.00
WD-B60X80N	Wiring Duct & Cover, W: 60mm (2.36") x H: 80mm (3.15"), Narrow (Thin) Slot, Grey	\$20.25
WD-B25X60NWH	Wiring Duct & Cover, W: 25mm (0.98") x H: 60mm (2.36"), Narrow (Thin) Slot, White	\$14.00
WD-B40X60NWH	Wiring Duct & Cover, W: 40mm (1.57") x H: 60mm (2.36"), Narrow (Thin) Slot, White	\$15.75
WD-B40X80NWH	Wiring Duct & Cover, W: 40mm (1.57") x H: 80mm (3.15"), Narrow (Thin) Slot, White	\$19.00

IT'S EASY TO BUILD YOUR OWN WIRING DUCT

Simply pick the code number from each of the sections below and combine them to build your part number. See page 6 for more detailed directions.

Wide (Standard) Slot Wiring Duct

WD - B W
I II III IV V

Example: To build one of our most popular Wiring Ducts, the part number would be **WD + B + III + W + V** or **WD-B40X40W**



I. WIRING DUCT	
CODE	DESCRIPTION
WD	Wiring Duct

II. WIRING DUCT TYPE	
CODE	DESCRIPTION
B	Rigid, "U" Shaped Duct with Non-Slip Cover

III. DIMENSION				
CODE	DIMENSIONS IN MM (WIDTH X HEIGHT), LENGTH: 2 METERS	DIMENSIONS IN INCHES (WIDTH X HEIGHT), LENGTH: 6'-6.75"	STANDARD PACKAGE QTY.	PRICE/PC.
25X30	25 x 30	0.98 x 1.18	12	\$10.50
25X40	25 x 40	0.98 x 1.57	12	\$13.00
25X60	25 x 60	0.98 x 2.36	8	\$14.00
25X80	25 x 80	0.98 x 3.15	6	\$17.50
25X100	25 x 100	0.98 x 3.94	6	\$20.25
40X40	40 x 40	1.57 x 1.57	8	\$14.50
40X60	40 x 60	1.57 x 2.36	6	\$15.75
40X80	40 x 80	1.57 x 3.15	4	\$19.00
40X100	40 x 100	1.57 x 3.94	4	\$21.75
60X40	60 x 40	2.36 x 1.57	6	\$16.00
60X60	60 x 60	2.36 x 2.36	4	\$16.50
60X80	60 x 80	2.36 x 3.15	4	\$20.25
60X100	60 x 100	2.36 x 3.94	2	\$23.00
80X40	80 x 40	3.15 x 1.57	4	\$20.25
80X60	80 x 60	3.15 x 2.36	4	\$21.00
80X80	80 x 80	3.15 x 3.15	2	\$24.50
80X100	80 x 100	3.15 x 3.94	2	\$28.00
100X60	100 x 60	3.94 x 2.36	2	\$23.50
100X80	100 x 80	3.94 x 3.15	2	\$26.75
100X100	100 x 100	3.94 x 3.94	2	\$32.25
150X100	150 x 100	5.90 x 3.94	2	\$50.50

IV. SLOT TYPE		
CODE	DESCRIPTION	DIMENSIONS
W	Wide (Standard)	See Figure 1W on page 442

V. COLOR	
CODE	DESCRIPTION
(Blank)	Grey
WH	White



SOME OF OUR POPULAR CONFIGURATIONS:

SERIES WD WIRING DUCT		
CATALOG NUMBER	DESCRIPTION	PRICE
WD-B25X60W	Wiring Duct & Cover, W: 25mm (0.98") x H: 60mm (2.36"), Wide (Standard) Slot, Grey	\$14.00
WD-B40X60W	Wiring Duct & Cover, W: 40mm (1.57") x H: 60mm (2.36"), Wide (Standard) Slot, Grey	\$15.75
WD-B40X80W	Wiring Duct & Cover, W: 40mm (1.57") x H: 80mm (3.15"), Wide (Standard) Slot, Grey	\$19.00
WD-B60X80W	Wiring Duct & Cover, W: 60mm (2.36") x H: 80mm (3.15"), Wide (Standard) Slot, Grey	\$20.25
WD-B25X60WWH	Wiring Duct & Cover, W: 25mm (0.98") x H: 60mm (2.36"), Wide (Standard) Slot, White	\$14.00
WD-B40X60WWH	Wiring Duct & Cover, W: 40mm (1.57") x H: 60mm (2.36"), Wide (Standard) Slot, White	\$15.75
WD-B40X80WWH	Wiring Duct & Cover, W: 40mm (1.57") x H: 80mm (3.15"), Wide (Standard) Slot, White	\$19.00

WIRING DUCT

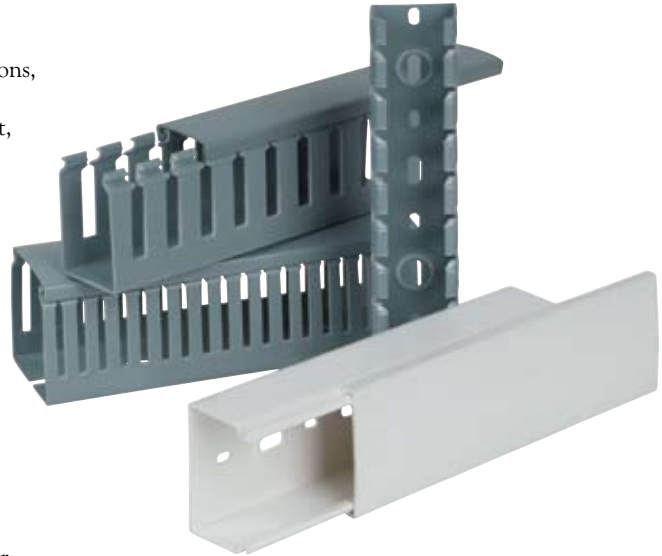
c3controls Series WD Wiring Duct includes a wide variety of types, options, and accessories to simplify and speed your wire/cable management and installation. By utilizing all of the features of the Series WD Wiring Duct, you will increase your wiring productivity, reduce installation costs, and have the most attractive and organized control panels in the industry!

Wiring duct and covers are constructed of rigid, non-flammable (UL94 V-0), polyvinylchloride (PVC) and are RoHS compliant. In addition, they are UL approved and CE marked for global acceptance.

Just take a look at the Series WD Wiring Duct to see what it has to offer, and how you might realize the benefits of it in combination with our other outstanding wiring products like Series WTB2 IEC Terminal Blocks, featured on pages 303-346.

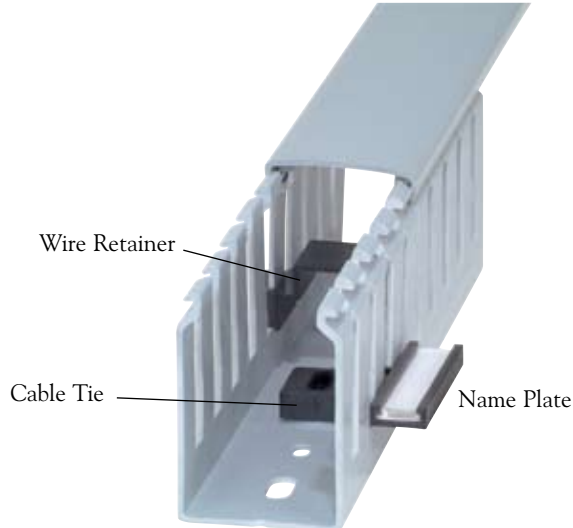
Product features include:

- cURus, CE Marked, and RoHS compliant.
- Grey and white wiring duct (and covers) are available to match your control panel design and your company “look and feel”.

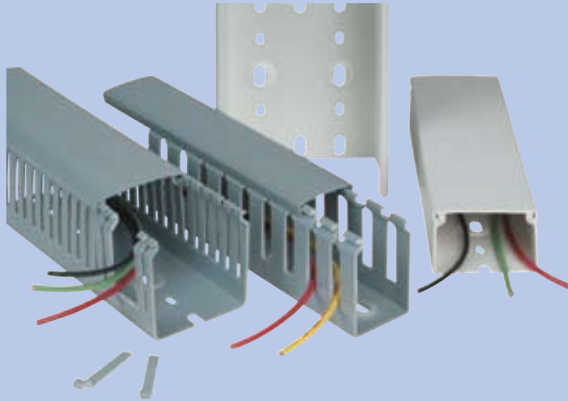


ACCESSORY INSTALLATION IS EASY...

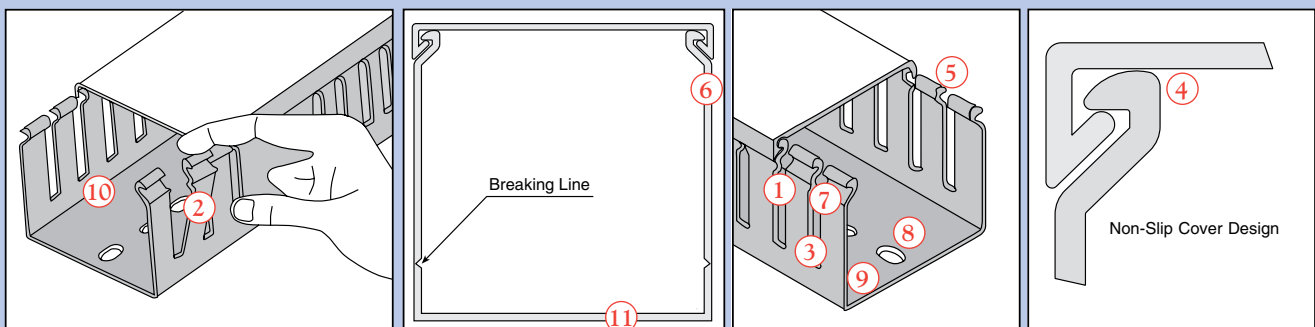
Wiring Duct accessories to simplify installation include mounting inserts, cable tie attachments, rivets, wire retainers, name plates, and mounting clips. See page 440.



UNIQUE PRODUCT FEATURES



1. V-shaped slot lead-in makes wire insertion fast and easy.
2. Snap-off, side wall fingers are scored to easily enlarge slots for any size wire or wire bundle. Scoring ensures clean break-offs, eliminating sharp edges that can damage wire insulation and abrasions to hands. No tool is required to “snap-off” fingers.
3. Three slot types are available to meet your capacity and flexibility needs, and accept almost any size wire or wire bundle:
 - Narrow Slot* – smaller fingers for more precise wiring
 - Wide Slot* – larger slots for bigger wires and bundles
 - Unslotted* – to restrict wire access for extra security
4. Interlocking, non-slip cover with two contact points prevents the cover from sliding, even in high vibration applications – and ensures a rigid duct assembly.
5. Smooth, rounded edges on duct fingers and covers prevent cutting and abrasions to hands and wires.
6. Flush side-wall and duct provide increased wire capacity and a pleasing, finished look.
7. Restricted slot design ensures that wires are held in place, even when the cover is not installed.
8. Embossed mounting holes accept mounting inserts for installing smaller wiring duct inside larger wiring duct. Mounting inserts can be installed even after the wiring duct is secured to the panel.
9. Mounting hole patterns with elongated slots comply with DIN 43659 for global installation flexibility.
10. Non-flammable (UL94 V-0), rigid PVC won't warp, peel, chip, crack, or become brittle, and resists oil, salt solutions, and fungus for superior performance in even the most demanding industrial environments.
11. Wide variety of sizes to meet your wiring capacity needs:
 - Widths from 25mm (0.98”) to 150mm (5.90”)
 - Heights from 30mm (1.18”) to 100mm (3.94”)
 - Up to 21 width/height combinations in each slot type



IT'S EASY TO BUILD YOUR OWN WIRING DUCT

Simply pick the code number from each of the sections below and combine them to build your part number. See page 6 for more detailed directions.

Unslotted (Solid Wall) Wiring Duct

WD - B **U**
I II III IV V

Example: To build one of our most popular Wiring Ducts, the part number would be **WD + B + III + U + V** or **WD-B80X40UWH**



I. WIRING DUCT

CODE	DESCRIPTION
WD	Wiring Duct

II. WIRING DUCT TYPE

CODE	DESCRIPTION
B	Rigid, "U" Shaped Duct with Non-Slip Cover

III. DIMENSION

CODE	DIMENSIONS IN MM (WIDTH X HEIGHT), LENGTH: 2 METERS	DIMENSIONS IN INCHES (WIDTH X HEIGHT), LENGTH: 6'-6.75"	STANDARD PACKAGE QTY.	PRICE/PC.
25X30	25 x 30	0.98 x 1.18	12	\$10.50
25X40	25 x 40	0.98 x 1.57	12	\$13.00
25X60	25 x 60	0.98 x 2.36	8	\$14.00
25X80	25 x 80	0.98 x 3.15	6	\$17.50
25X100	25 x 100	0.98 x 3.94	6	\$20.25
40X40	40 x 40	1.57 x 1.57	8	\$14.50
40X60	40 x 60	1.57 x 2.36	6	\$15.75
40X80	40 x 80	1.57 x 3.15	4	\$19.00
40X100	40 x 100	1.57 x 3.94	4	\$21.75
60X40	60 x 40	2.36 x 1.57	6	\$16.00
60X60	60 x 60	2.36 x 2.36	4	\$16.50
60X80	60 x 80	2.36 x 3.15	4	\$20.25
60X100	60 x 100	2.36 x 3.94	2	\$23.00
80X40	80 x 40	3.15 x 1.57	4	\$20.25
80X60	80 x 60	3.15 x 2.36	4	\$21.00
80X80	80 x 80	3.15 x 3.15	2	\$24.50
80X100	80 x 100	3.15 x 3.94	2	\$28.00
100X60	100 x 60	3.94 x 2.36	2	\$23.50
100X80	100 x 80	3.94 x 3.15	2	\$26.75
100X100	100 x 100	3.94 x 3.94	2	\$32.25
150X100	150 x 100	5.90 x 3.94	2	\$50.50

IV. SLOT TYPE

CODE	DESCRIPTION
U	Unslotted (Solid Wall)

V. COLOR

CODE	DESCRIPTION
(Blank)	Grey
WH	White

DISCOUNT SCHEDULE **C**

SOME OF OUR POPULAR CONFIGURATIONS:

SERIES WD WIRING DUCT

CATALOG NUMBER	DESCRIPTION	PRICE
WD-B25X60U	Wiring Duct & Cover, W: 25mm (0.98") x H: 60mm (2.36"), Unslotted (Solid Wall), Grey	\$14.00
WD-B40X60U	Wiring Duct & Cover, W: 40mm (1.57") x H: 60mm (2.36"), Unslotted (Solid Wall), Grey	\$15.75
WD-B40X80U	Wiring Duct & Cover, W: 40mm (1.57") x H: 80mm (3.15"), Unslotted (Solid Wall), Grey	\$19.00
WD-B60X80U	Wiring Duct & Cover, W: 60mm (2.36") x H: 80mm (3.15"), Unslotted (Solid Wall), Grey	\$20.25
WD-B25X60UWH	Wiring Duct & Cover, W: 25mm (0.98") x H: 60mm (2.36"), Unslotted (Solid Wall), White	\$14.00
WD-B40X60UWH	Wiring Duct & Cover, W: 40mm (1.57") x H: 60mm (2.36"), Unslotted (Solid Wall), White	\$15.75
WD-B40X80UWH	Wiring Duct & Cover, W: 40mm (1.57") x H: 80mm (3.15"), Unslotted (Solid Wall), White	\$19.00

IT'S EASY TO BUILD YOUR OWN WIRING DUCT COVER

Simply pick the code number from each of the sections below and combine them to build your part number. See page 6 for more detailed directions.

Wiring Duct Covers

WD - B C
 I II III IV V

Example: To build one of our most popular Wiring Duct Covers, the part number would be **WD + B + C + IV + V** or **WD-BC40WH**



NOTE: Wiring Duct Covers are provided and included as standard in the Wiring Duct catalog numbers (and price) configured on pages 434, 435 and 438. Separate covers should be purchased for replacement only.

I. WIRING DUCT	
CODE	DESCRIPTION
WD	Wiring Duct

II. WIRING DUCT TYPE	
CODE	DESCRIPTION
B	Rigid, "U" Shaped Duct with Non-Slip Cover

III. COVER	
CODE	DESCRIPTION
C	Non-Slip Cover for Rigid, "U" Shaped Duct

IV. DIMENSION					
CODE	DIMENSIONS IN MM (WIDTH), LENGTH: 2 METERS	DIMENSIONS IN INCHES (WIDTH), LENGTH: 6'-6.75"	FOR USE WITH DUCT DIMENSION CODES	STANDARD PACKAGE QTY.	PRICE/PC.
25	25	0.98	25x30	24	\$ 3.25
			25x40		
			25x60		
			25x80		
			25x100		
40	40	1.57	40x40	16	\$ 4.25
			40x60		
			40x80		
			40x100		
60	60	2.36	60x40	12	\$ 5.00
			60x60		
			60x80		
			60x100		
80	80	3.15	80x40	8	\$ 7.75
			80x60		
			80x80		
			80x100		
100	100	3.94	100x60	4	\$ 9.00
			100x80		
			100x100		
150	150	5.90	150x100	4	\$16.75

V. COLOR	
CODE	DESCRIPTION
(Blank)	Grey
WH	White



UNIVERSAL MOUNTING INSERT



Mounting Inserts are used to install smaller sizes of duct inside larger sizes of duct – for separation of electrical circuits (ex. control, power, AC, DC, etc.). Installs easily with a straight blade screwdriver. Twists into place and holds securely. Single, universal insert for all sizes of duct.

**NEW
PRODUCT
OFFERING!**

CODE	FOR USE WITH	PCS./PKG.	PRICE/PC.
WD-BMTGI	All Wiring Duct Codes	100	\$0.10

UNIVERSAL CABLE TIE ATTACHMENT



Cable Tie Attachments are anchors that can be used when cable ties are used to bundle a number of wires inside the duct. Installs easily with a straight blade screwdriver. Twists into place and holds securely into the bottom of the duct. Single, universal attachment for all sizes of duct.

**NEW
PRODUCT
OFFERING!**

CODE	FOR USE WITH	PCS./PKG.	PRICE/PC.
WD-BCTA1	All Wiring Duct Codes	100	\$0.25

NYLON RIVETS



Nylon Rivets are used to install wiring duct to any panel or mounting surface. Simply pushes into the duct slot.

**NEW
PRODUCT
OFFERING!**

CODE	FOR USE WITH	PCS./PKG.	PRICE/PC.
WD-BNR1	6mm (1/4") Mounting Holes	100	\$0.05
WD-BNR2	4mm (5/32") Mounting Holes	100	\$0.05

DISCOUNT
SCHEDULE **C**

WIRE RETAINERS



Wire Retainers hold wires in place inside the duct during initial wiring/installation activities or during maintenance/alteration activities. Wire retainers prevent loose wires or wire bundles from falling out of the duct when the duct cover is removed. Simply snaps on the duct finger.

**NEW
PRODUCT
OFFERING!**

CODE	FOR USE WITH	PCS./PKG.	PRICE/PC.
WD-BWRN40	***X40N Duct Codes	100	\$0.50
WD-BWRN60	***X60N Duct Codes	100	\$0.75
WD-BWRN80	***X80N Duct Codes	100	\$1.00
WD-BWRN100	***X100N Duct Codes	100	\$1.25
WD-BWRW40	***X40W Duct Codes	100	\$0.50
WD-BWRW60	***X60W Duct Codes	100	\$0.75
WD-BWRW80	***X80W Duct Codes	100	\$1.00
WD-BWRW100	***X100W Duct Codes	100	\$1.25

NAME PLATES



The Name Plate provides a simple means of identifying circuits, groups of wires, sections of control panels, or wiring for different machines. Includes a paper label and clear protective label cover. Simply snaps into the duct slot.

**NEW
PRODUCT
OFFERING!**

CODE	FOR USE WITH	PCS./PKG.	PRICE/PC.
WD-BNPN1	Duct with Narrow Slots (Code N)	100	\$0.40
WD-BNPW1	Duct with Wide Slots (Code W)	100	\$0.40

MOUNTING CLIPS

Mounting Clips provide an easy method for installing wiring duct on a 35mm DIN rail. Simply snap the mounting clip on the DIN rail and secure the wiring duct to the mounting clip.



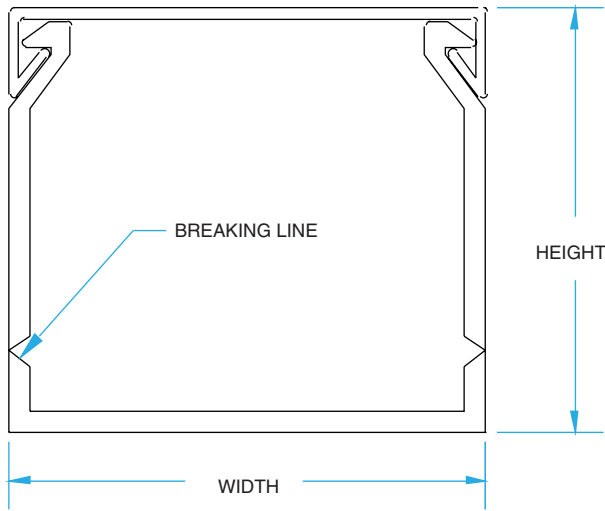
**NEW
PRODUCT
OFFERING!**

CODE	FOR USE WITH	PCS./PKG.	PRICE/PC.
WD-BMC1	All Wiring Duct Codes NOTE: Wiring duct secures to the mounting clip with Nylon Rivet (BNR1).	100	\$0.75
WD-BMC2	All Wiring Duct Codes NOTE: Wiring duct secures to the mounting clip with a screw (M3, 1/8").	100	\$0.75

SPECIFICATIONS:

WIRING DUCT SPECIFICATIONS			
GENERAL			
	UNITS		
MATERIALS			
Wiring Duct			Rigid, Self-Extinguishing PVC
Wiring Duct Covers			Rigid, Self-Extinguishing PVC
Mounting Inserts			Nylon 66
Cable Tie Attachments			Nylon 6 - Glass Filled
Nylon Rivets			Nylon 66
Wire Retainers			Nylon 6
Name Plates			Nylon 6
Mounting Clips			Nylon 6
RoHS COMPLIANCE			For RoHS Compliance documentation by product, refer to www.c3controls.com
CONTINUOUS USE TEMPERATURE			+5° F to +140° F (-15° C to +60° C)
FLAMMABILITY			UL94 V-0
STANDARD WIRING DUCT AND COVER LENGTH			2 meters (6'-6.75")
STANDARD UNIT			Wiring Duct complete with Cover
MATERIAL PROPERTY			
	UNITS	STANDARD	VALUE
Tensile Strength at Break	kg/cm ²	ASTM D838	>390
Tensile Modulus	kg/cm ²	ASTM D638	13,500
Flexural Strength	kg/cm ²	ASTM D790	550
Compressive Strength	kg/cm ²	ASTM D695	1190
Izod Impact Strength	kg-cm/cm	ASTM D256	7.0
Hardness - Shore D	—	ASTM D2240	75-80
HDT at 4.6 kg/cm ²	°C	ASTM D648	85
Vicat Softening Point at 5 kg Load	°C	ASTM D1525	85
Co-efficient of Linear Thermal Expansion	°C	ASTM D696	4.6 x 10 ⁻⁵
Flammability	—	UL94	V-0
Glow Wire Test (2mm)	°C	IEC 695-2-1	960
Limiting Oxygen Index	%	ASTM D2863	48.0
Specific Gravity	—	ASTM D792	1.48
Water Absorption	%	ASTM D570	0.05
Power Factor	—	ASTM D150	0.018
Dielectric Constant	—	ASTM D150	2.5
Dielectric Strength	kV/mm	ASTM D149	13
Surface Resistivity	Ohm	ASTM D257	1.29 x 10 ¹⁵
Volume Resistivity	Ohm-cm	ASTM D257	3.21 x 10 ¹⁶
Lead Content	ppm	Directive 2002/95/EC	<500
Cadmium Content	ppm	(IEC 61321)	<50

WIRING DUCT AND COVER



WIRING DUCT AND COVER DIMENSIONS

DIMENSION CODE	WIDTH (MM)	HEIGHT (MM)	WIDTH (INCHES)	HEIGHT (INCHES)
25X30	25	30	0.98	1.18
25X40	25	40	0.98	1.57
25X60	25	60	0.98	2.36
25X80	25	80	0.98	3.15
25X100	25	100	0.98	3.94
40X40	40	40	1.57	1.57
40X60	40	60	1.57	2.36
40X80	40	80	1.57	3.15
40X100	40	100	1.57	3.94
60X40	60	40	2.36	1.57
60X60	60	60	2.36	2.36
60X80	60	80	2.36	3.15
60X100	60	100	2.36	3.94
80X40	80	40	3.15	1.57
80X60	80	60	3.15	2.36
80X80	80	80	3.15	3.15
80X100	80	100	3.15	3.94
100X60	100	60	3.94	2.36
100X80	100	80	3.94	3.15
100X100	100	100	3.94	3.94
150X100	150	100	5.90	3.94

SLOTS

FIGURE 1N
NARROW (THIN) SLOT

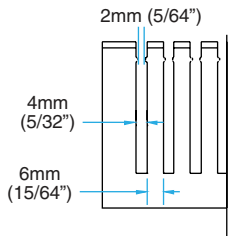
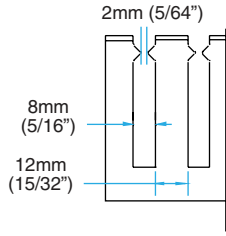
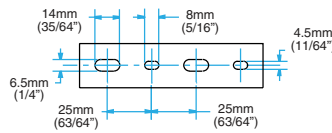


FIGURE 1W
WIDE (STANDARD) SLOT

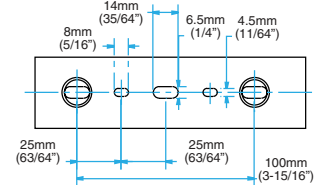


MOUNTING PATTERNS

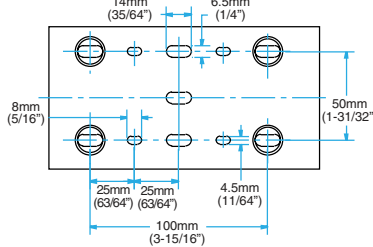
DUCT WIDTH: 25mm



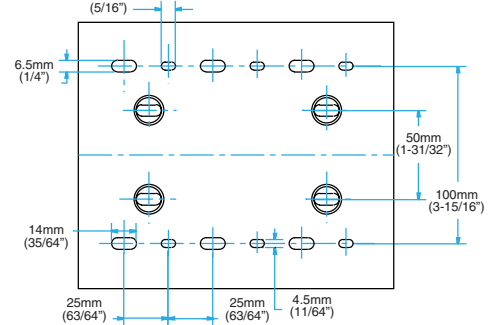
DUCT WIDTH: 40mm and 60mm



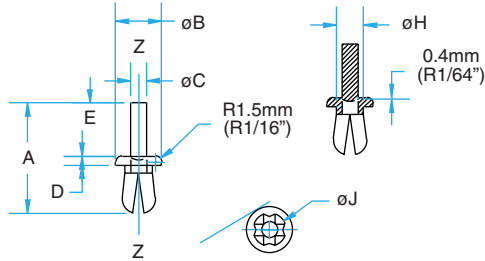
DUCT WIDTH: 80mm and 100mm



DUCT WIDTH: 150mm



NYLON RIVETS



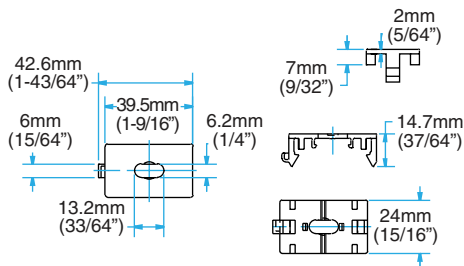
DIMENSIONS IN TABLE SHOWN ARE MM (IN)

TYPE	A	øB	øC	D	E	øH	øJ
WD-BNR1	27 (1.06)	11.2 (0.44)	3.9 (0.16)	2.2 (0.09)	13 (0.51)	6.6 (0.26)	9 (0.35)
WD-BNR2	21.4 (0.84)	9 (0.35)	2.6 (0.10)	2.2 (0.09)	10.5 (0.41)	4.8 (0.19)	6.2 (0.24)

MOUNTING CLIPS

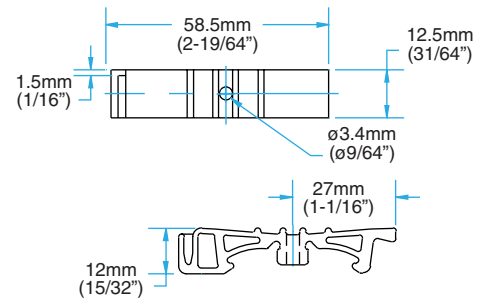
WD-BMC1

(WIRING DUCT SECURES TO THE MOUNTING CLIP WITH NYLON RIVET CAT. No. WD-BNR1)



WD-BMC2

(WIRING DUCT SECURES TO THE MOUNTING CLIP WITH A SCREW [M3, 1/8"])



VISIT WWW.C3CONTROLS.COM TO DOWNLOAD CAD DRAWINGS

Formula for calculating Fill Capacity: $\text{Number of wires} = \frac{\text{Duct } W \times H}{1.75 \times (\text{Wire O.D.})^2} \div 2$

Note: Wire fill is based on 50% fill of duct area.

WIRE FILL CAPACITY FOR ELECTRICAL CONDUCTORS

DIMENSION CODE	NOMINAL DUCT SIZE			NOMINAL DUCT SIZE			ELECTRICAL CONDUCTORS												
	WIDTH (MM)	HEIGHT (MM)	AREA (MM ²)	WIDTH (IN.)	HEIGHT (IN.)	AREA (IN ²)	22 AWG		18 AWG		16 AWG		14 AWG			12 AWG		10 AWG	8 AWG
							0.065	0.113	0.084	0.125	0.096	0.165	0.139	0.105	0.158	0.122	0.153	0.216	
MTW	MTW	THHN	MTW	THHN	MTW	THHN	MTW	THHN	MTW	THHN	MTW	THHN	MTW	THHN	THHN	THHN			
25X30	25	30	750	0.98	1.18	1.16	78	26	47	21	36	12	17	30	13	22	14	7	
25X40	25	40	1,000	0.98	1.57	1.54	104	34	62	28	48	16	23	40	18	30	19	9	
25X60	25	60	1,500	0.98	2.36	2.31	156	52	94	42	72	24	34	60	26	44	28	14	
25X80	25	80	2,000	0.98	3.15	3.09	209	69	125	57	96	32	46	80	35	59	38	19	
25X100	25	100	2,500	0.98	3.94	3.86	261	86	156	71	120	41	57	100	44	74	47	24	
40X40	40	40	1,600	1.57	1.57	2.46	166	55	100	45	76	26	36	64	28	47	30	15	
40X60	40	60	2,400	1.57	2.36	3.71	251	83	150	68	115	39	55	96	42	71	45	23	
40X80	40	80	3,200	1.57	3.15	4.95	335	111	200	91	153	52	73	128	57	95	60	30	
40X100	40	100	4,000	1.57	3.94	6.19	419	139	251	113	192	65	92	160	71	119	76	38	
60X20	60	20	1,200	2.36	0.79	1.86	126	42	75	34	58	20	28	48	21	36	23	11	
60X40	60	40	2,400	2.36	1.57	3.71	251	83	150	68	115	39	55	96	42	71	45	23	
60X60	60	60	3,600	2.36	2.36	5.57	377	125	226	102	173	58	82	144	64	107	68	34	
60X80	60	80	4,800	2.36	3.15	7.43	502	166	301	136	230	78	110	193	85	143	91	46	
60X100	60	100	6,000	2.36	3.94	9.30	629	208	377	170	288	98	138	241	106	179	114	57	
80X40	80	40	3,200	3.15	1.57	4.95	335	111	200	91	153	52	73	128	57	95	60	30	
80X60	80	60	4,800	3.15	2.36	7.43	502	166	301	136	230	78	110	193	85	143	91	46	
80X80	80	80	6,400	3.15	3.15	9.92	671	222	402	181	308	104	147	257	114	190	121	61	
80X100	80	100	8,000	3.15	3.94	12.41	839	278	503	227	385	130	184	322	142	238	151	76	
100X60	100	60	6,000	3.94	2.36	9.30	629	208	377	170	288	98	138	241	106	179	114	57	
100X80	100	80	8,000	3.94	3.15	12.41	839	278	503	227	385	130	184	322	142	238	151	76	
100X100	100	100	10,000	3.94	3.94	15.52	1,050	347	628	284	481	163	230	402	178	298	189	95	
150X100	150	100	15,000	5.90	3.94	23.25	1,572	520	941	425	721	244	344	603	266	446	284	142	

WIRE FILL CAPACITY FOR DATA CABLE

DIMENSION CODE	NOMINAL DUCT SIZE			NOMINAL DUCT SIZE			DATA CABLE		
	WIDTH (MM)	HEIGHT (MM)	AREA (MM ²)	WIDTH (IN.)	HEIGHT (IN.)	AREA (IN ²)	24 AWG		
							0.217	0.25	0.422
UPM/CM CAT5E	CAT6	UTP/CM							
25X30	25	30	750	0.98	1.18	1.16	7	5	2
25X40	25	40	1,000	0.98	1.57	1.54	9	7	2
25X60	25	60	1,500	0.98	2.36	2.31	14	11	4
25X80	25	80	2,000	0.98	3.15	3.09	19	14	5
25X100	25	100	2,500	0.98	3.94	3.86	23	18	6
40X40	40	40	1,600	1.57	1.57	2.46	15	11	4
40X60	40	60	2,400	1.57	2.36	3.71	23	17	6
40X80	40	80	3,200	1.57	3.15	4.95	30	23	8
40X100	40	100	4,000	1.57	3.94	6.19	38	28	10
60X20	60	20	1,200	2.36	0.79	1.86	11	9	3
60X40	60	40	2,400	2.36	1.57	3.71	23	17	6
60X60	60	60	3,600	2.36	2.36	5.57	34	25	9
60X80	60	80	4,800	2.36	3.15	7.43	45	34	12
60X100	60	100	6,000	2.36	3.94	9.30	56	43	15
80X40	80	40	3,200	3.15	1.57	4.95	30	23	8
80X60	80	60	4,800	3.15	2.36	7.43	45	34	12
80X80	80	80	6,400	3.15	3.15	9.92	60	45	16
80X100	80	100	8,000	3.15	3.94	12.41	75	57	20
100X60	100	60	6,000	3.94	2.36	9.30	56	43	15
100X80	100	80	8,000	3.94	3.15	12.41	75	57	20
100X100	100	100	10,000	3.94	3.94	15.52	94	71	25
150X100	150	100	15,000	5.90	3.94	23.25	141	106	37