



WENZHOU BECK ELECTRONIC CO.,LTD



www.bok.com.cn

WENZHOU BECK ELECTRONIC CO.,LTD

ADD: Jinzhou Industry Park, Guoxi town, Ouhai zone, Wenzhou city, Zhejiang Province

Tel: 0086-577-86708678 0086-577-86710000

Fax: 0086-577-86708789

E-mail: export@bxlhk.com

Hotline: 400-8266-955



BRAND CULTURE

ENTERPRISE TARGET AND POSITIONING

Leading solutions provider ,Professional access equipment manufacturer

BRAND VISION:

To make World-class security products.

BRAND POSITIONING:

Secure, Fashion, Concise.

PRODUCT POSITIONING:

Stable, Useful, Taste.

MARKET POSITIONING:

Business, Commercial offices, Modern accommodation.

IMAGE POSITIONING:

With a strong technological and cultural characteristics and connotation.

CONSUMER POSITIONING:

Pay attention to product quality and the quality of life, and has a certain brand consumption tendency of organizations and individuals.



2004

First time to attend the Canton Fair Through ISO9000 & ISO14000 , passed CE,ROHS



2010

Be known as “Enterprise technology R&D Center” , Invest 6% of the annual sales in new product development every year .



2015

Be honored as “AA credit enterprise”



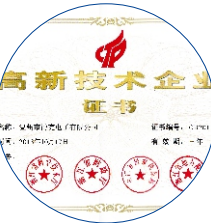
1998

Company established



2008

Set up over 30 offices in capital cities of China



2012

Been awarded "Advanced technology enterprise in China ", "Security products well-known brands in china"

ENTERPRISE INTRODUCTION

As a National High and New Technology Enterprise, BECK is always committed to upgrading the technology of access control and One-Card system, providing users with leading-edge access control products and solutions. BECK has professional teams which are good at research, development, marketing and production; they provide quality services in project consulting, system design, installation and system maintenance, create maximum value for customers.

BECK has modern standard workshops, Antistatic aging test room, High and low temperature test chamber, EMC、EMI jamproof tester, vibration tester, tensile tester and pressure tester, etc. Products are developed by the ARM 32-bit processor; the processor is small in size, low in power dissipation, low in cost, and it has both 16 and 32 bit instruction set, fast processing speed, so the products are high in performance, cost-effective and competitive.

Products production strictly according to ISO9001:2008.Products has gone through the Ministry of Public Security,ISO14001:2004,CE and ROHS certification.With the guide of advanced technology, paid closely attention to the development of security industry of domestic and abroad,continuous innovation and focus on the prospective of product research,Beck try its best to meet customer's demand in providing products and services.In addition to providing first-class products,the vast marketing network and perfect service system is the necessary condition to win customer satisfaction, so we will continue to improve and perfect, with excellent quality and service quality to win the market and to establish a good reputation.

Beck Electronic ,has been awarded:Advanced Technology Enterprise in China,National key New Products of Science and Technology,National Torch Program Projects,National Small and mid-sized Enterprise,Technology Innovation Fund Projects,Wenzhou Patent Demonstration Enterprises,China Security Top Ten influential Brand,China Security Top Ten Valuable Brand,China Security Famous Brand,China Security Top 50 Word of mouth,30 Gold Credit Security Vendors,Top Ten Customer Satisfied Security Brand in China.



Factory building



Newly-built plant

Beck, as a National high-tech enterprise, is an integration with independent development, production ,sales and service in access control system.



Office area



R&D engineer



Raw material warehouse



QC workshop



Workshop of Reflow Soldering



Warehouse of finished products

We have passed CE certificate, RoHS certificate, ISO14001:2004 certificate and ISO9001:2008 certificate.

➤ Haier Group America Branch
Our products:
Electric control locks



➤ Wal-mart
Our products:
Electric door opener
Access controller

➤ Fuzhou Strait International Conference and Exhibition Center
Our products:
Bolt locks
Power supply
Magnetic lock



➤ Sheraton Hotel in Beijing
Use products:
Hotel door lock system
Door closer

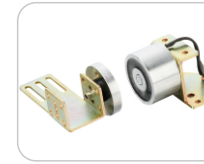
CATALOGUE



Electric Control Lock
01-03



Accessory for Electric BoltLock
13-13



Door Stopper
28-28



Door Closer
34-34



Code Lock
04-05



Access Controller
14-17



Networking Access Control
29-29



Fingerprint lock
35-36



Office Lock
06-06



Electromagnetic Lock
18-24



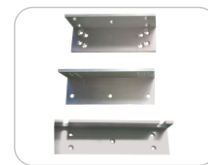
Accessory for Networking Access Control
30-30



Remote Controller/
Wire Protection Tube
37-37



Electric Strike
07-08



L&U-Shaped Bracket
25-25



Reader
31-32



Card
38-38



Electric Bolt Lock
09-12



Power Supply
26-27



Exit Button
33-33



RD-228

- It can work with video door phone system.
- The service life is 500000 times.
- Wireless remote control and card can be operated from both inside and outside

Working voltage	12VDC	Material	iron
Operating voltage	6-18V DC/AC	Alarm	√
Operating current	0.3A	Time delay	1-99S
Operating temperature	-20~60℃	Quit and recover the function of all the user cards	√
Operating humidity	10%~90%RH	Door status monitor	√
Length of latch bolt	20mm	The distance of infrared remote control	≤3m
The distance of wireless remote control	≤3m(no obstacle)	Latch bolt automatic detection	√
The distance of reading a card	1-100mm	Service life	500,000times
Card type	ID or EM compatible card	Size	130*106*59mm
Memory capacity	2000 pcs(2000-8000 customized)	The ways of opening the lock	Knob,key,remote control,card,code



RD-224



RD-229

Model	RD-224	RD-229
Material	Iron	Iron
Working voltage	10-24V DC	12V DC
Operating voltage	6-18V DC/AC	6-18V DC/AC
Quiescent current	20mA	≤50mA
Operating current	≤0.35A	0.3A
Operating temperature	-20~55℃	- 20~60℃
Operating humidity	10%~90%RH	10%~90%RH
Time delay	After opening the lock,if don't open the door within 6 seconds, it will lock automatically	1-99S
Service life	500,000times	500,000times
Length of latch bolt	20mm	20mm
Alarm	√(yes)	√
Latch bolt automatic detection	√(yes)	√
Size	130*106*59mm	130*106*59mm



RD-221B



RD-223



RD-227



RD-J

- Novelty and fashion appearance.
- DIY, easy installation.high security.
- Standalone door lock ,easy operation.
- With emergency key.
- External power capability.

Technical Parameters:

- 1group master code ,9 groups of user codes.
- Material:zinc alloy ,anti-rust.
- With low battery alarm function ,will alarm when low battery.
- Suitable door thickness :35-50mm (standard 2 3/8 or 2 3/4 backset).
- Battery type : 5 alkaline battery (4 pcs ,1.5V each).
- Battery life :about 20000 times ,about two years .
- Two kind of bolt :50mm length and 60mm length .

Model	RD-221B	RD-223	RD-227
Marerial	Iron	Iron	Iron
Working voltage	12V DC	12V DC	12V DC
Operating voltage	9-15V DC/AC	9-15V DC/AC	9-15V DC/AC
Operating current	≤1.3A	1.3A	1.3A
Operating temperature	-20~55℃	-20~55℃	-20~55℃
Operating humidity	10%~90%RH	10%~90%RH	10%~90%RH
Locked mode	Locking by collision	Locking by collision	Locking by collision
The ways of opening the lock	Electronic , key , knob	Electricity , key , button	Electricity , key
Service life	500,000times	500,000times	500,000times
Length of latch bolt	13mm	15mm	15mm
The angle of opening the door	90°	90°	90°
Size	154*106*54.5mm	154*117*63mm	154*117*63mm



M2

- DIY
- Chargeable lithium battery, no need to change battery, environment friendly
- Unlocking by key and codes
- Suitable for all indoor doors
- Easy installation

Technical Parameters:

- Working voltage: 5V DC
- Working current: $\leq 160\text{mA}$
- Static current: $\leq 120\mu\text{A}$
- Code capacity: 50 groups
- Code extent: 4-12 digits
- Unlocking time delay: 3 seconds
- Battery: 3.7V 18650 chargeable lithium battery
- Battery capacity: 2000mAh
- Alarm when the voltage $\leq 3.4\text{V}$
- Battery duration (fully charged): 6 months

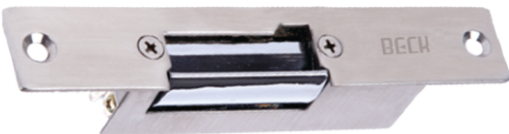


BID300

- Novelty and fashion appearance.
- DIY, easy installation.
- Standalone door lock, easy operation.
- Programming master card and user cards itself, very easy operation.
- With low battery function, remind you to change battery.

Technical Parameters:

- Working voltage: 6V (4 pcs 5 alkaline battery, 1.5V each).
- Static current: 20uA
- Average open current: 250mA
- Static consumption: 0.066 milliwatt
- Card capability : 500 pcs
- Battery life : 2000 times ,up to two years
- Working temperature: -25°C-55°C
- Relative humidity: 0%-85%



2081EJ

- Flush-mounted electric opener: stainless steel short forend.
- Zinc alloy latch, durable.
- Reversible: left or right.
- Reduced power consumption.
- Testing to 500000 cycles.



2088EJ

- Flush-mounted electric opener: steel long forend.
- Zinc alloy latch, durable.
- Reversible: left or right.
- Permanent trigger after pulse.
- Adjustable roller.
- Reduced power consumption.

Model	2081EJ
Working voltage	12VC
Operating current	0.17A fail secure 0.14A fail safe
Operating temperature	-20℃ ~ 55℃
Operating humidity	10%~90%RH
Matching products	Anode lock
Security mode	Fail safe (Power on - locking) Fail secure (Power on - unlocking)
Applicability	Timber or steel or PVC doors
The opening angle	90°
Lock body material	Zinc Die-cast
Door signal output	✓
Lock catch size	44*13*8mm
Body size	146*24.5*30.5mm

Model	2088EJ
Working voltage	12VC
Operating current	800mA
Operating temperature	-20℃ ~ 55℃
Operating humidity	10%~90%RH
Matching products	Anode lock
Security mode	Fail secure (Power on - unlocking)
Applicability	Timber or steel or PVC doors
The opening angle	90°
Door thickness	>30mm
Lock catch size	42*13*4mm
Square deadbolt size	102*12mm
Body size	250*25*32mm



2080EJ



2082GL



2083EJ



2085EJ

Model	2080EJ	2082GL	2083EJ	2085EJ
Working voltage	12VC	12VC	12VC	12VC
Operating current	0.17A fail secure 0.14A fail safe	0.24A fail secure 0.5A fail safe	0.17A fail secure 0.14A fail safe	1500mA
Operating temperature	-25℃ ~ 55℃	-20℃ ~ 55℃	-20℃ ~ 55℃	-20℃ ~ 55℃
Operating humidity	10%~90%RH	10%~90%RH	10%~90%RH	10%~90%RH
Matching products	Anode lock	—	Anode lock	Anode lock
Applicability	Timber or steel or PVC doors	Frameless glass door	Timber or steel or PVC doors	Timber or steel or PVC doors
The opening angle	90°	90°	90°	90°
Security mode	Fail safe (Power on - locking) Fail secure (Power on - unlocking)	Fail safe (Power on - locking) Fail secure (Power on - unlocking)	Fail safe (Power on - locking) Fail secure (Power on - unlocking)	Fail secure (Power on - unlocking)
Door thickness	—	≤12mm	—	>50mm
Lock body material	Zinc Die-cast	Zinc Die-cast	Zinc Die-cast	Zinc Die-cast
Door signal output	✓	✓	✓	—
Remote control	✓	✓	✓	✓
Lock catch size	47*16*17mm	—	47*19*25mm	45*13*8mm
Square deadbolt size	55*12mm	—	—	42*17mm
Body size	240*23*31.5mm	149*28*31mm	148*43*39mm	132*62*40mm



- Low temperature, safe & durable.
- Low power, environmental protection.
- Best choice for glass door which is without doorframe
- Long life with 500000 cycles.
- Superior strength aluminium alloy,solid stainless steel bolt.

2086GL

Working voltage	10~24VDC	Door opening angle	180°
Static current	0.08A	Time delay adjustable	0S,2.5S,5S,8S
Operating current	0.8A	Polarity protection	✓
Ambient temperature	- 20℃~55℃	Signal output	Lock status output
Relative humidity	10%~90%RH	Dimension	188*58*48mm
Security mode	Power on - locking Power off - unlocking	Applicability	Glass door without frame
Type of locking	Magnetic Induction		



- Mini size.
- SS304 bolt,1000KG holding force.
- Fail safe and fail secure can be interconverted.

BDC-2101

Working voltage	12VDC ~ 24VDC	Time delay adjustable	0S,2.5S,5S,8S
Ambient temperature	- 25℃~55℃	Length of latch bolt	15mm
Material of panel	Stainless steel	Holding force	1000KG (2204LBS)
Door opening angle	180°	Signal output	Door status output
Operating current	12VDC/1.2A 24VDC/800mA	Dimension	177*30*34.5mm
Static current	12VDC/210mA 24VDC/90mA	Applicability	Glass Door,Wooden Door,Iron Door
Type of locking	Magnetic induction	Security mode	Power on - locking and power on - unlocking can automatically convert



1080S



1081S



1086S

Type	1080S	1081S	1086S
Working voltage	12VDC	10~24VDC	11~24VDC
Operating current	0.45A	0.8A	1.15~0.8A
Static current	0.45A	0.08A	0.21~0.09A
Ambient temperature	- 20℃~55℃	- 20℃~55℃	- 20℃~55℃
Relative humidity	10%~90%RH	10%~90%RH	10%~90%RH
Type of locking	Magnetic induction	Magnetic induction	Magnetic induction
Security mode	Power on - locking Power off - unlocking	Power on - locking Power off - unlocking	Power on - locking and power on - unlocking can automatically convert
Door opening angle	180°	180°	180°
Time delay adjustable	—	0S,2.5S,5S,8S	0S,2.5S,5S,8S
Polarity protection	—	√	√
Signal output	—	Lock status output	Lock status output & door status output
Applicability	Glass door,wooden door,iron door	Glass door,wooden door,iron door	Glass door,wooden door,iron door
Dimension	203*34*43mm	204*33.5*42.5mm	210*28*43mm



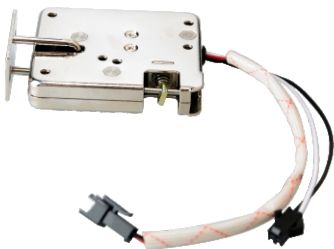
BDC-2102



BDC-2105



1091S

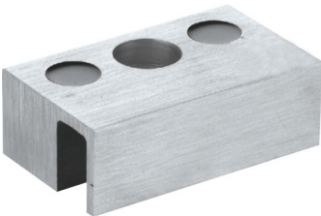


BGM-6101

Type	BDC-2102	BDC-2105	1091S	BGM-6101
Working voltage	12VDC~24VDC	12VDC~24VDC	10~24VDC	12VDC (24VDC customized)
Operating current	12VDC/970mA , 24VDC/1930mA	12VDC/1A 24VDC/660mA	0.8A	2A
Ambient temperature	- 25℃~55℃	- 25℃~55℃	- 20℃~55℃	30℃~60℃
Relative humidity	10%~90%RH	10%~90%RH	10%~90%RH	10%~90%RH
Security mode	Power on - locking Power off - unlocking	Power on - unlocking Power off - locking	Power on - locking Power off - unlocking	Power on - unlocking Power off - locking
Time delay adjustable	0S,2.5S,5S,8S	0S,2.5S,5S,8S	—	—
Holding force	500KG (1102LBS)	1000KG (2204LBS)	—	—
Signal output	Door status output	Door status output	—	—
Applicability	Glass Door,Wooden Door,Iron Door	Glass Door,Wooden Door,Iron Door	Glass door without frame	File cabinet,display cabinet, etc. Can work with access control system
Dimension	205*30*36.5mm	250*30*36.5mm	165*58*48mm	65*55*12mm



WK80



PL5019



PL6029

- They are used with electric bolt lock ,the best choice for frameless glasss door.

Model	WK80	PL5019	PL6029
Crack of the requirements	≥5mm	≥8mm	≥5mm
Glass thickness	10-12mm	—	—
Applicability	Fraeless glass door	Fraeless glass door	Fraeless glass door
Matching product	1080S,1081S,1088S	Elelctric bolt lock	Elelctric bolt lock
Material	SUS439	Aluminium alloy	Q235A
Surface treatment	—	Drawing oxidation	Zinc plating-white
Dimension	216*57*47mm	80*27*47mm	93*46.5*38mm



BKZ-1101-C

- Zinc alloy,durable.
- Suitable for narrow doorframe.
- Backlight,avalibale to operate in dark.

Working voltage	12VDC	Monitoring of door status	✓
Static current	< 35mA	Type of reading card	ID or EM Compatible card
Load current	1A	Time delay adjustable	1~99S
Alarm output	50mA	Identify mode	Card/password/card +password
Ambient temperature	-25℃~60℃	Alarm function	✓
Relative humidity	10%~90%RH	Safety mode	✓
Storage capacity	500passwords & 500 cards	Deploy defense and cancel	✓
Distance of reading card	20~50mm	Dimension	148*42.5*18.5mm
Applicability	Commercial institution,financial institution,golf club, private lounge,etc.		



- Metal,durable.
- Touch screen,quick in operation.
- Latest ARM chip,high security.

BKZ-1115

Working voltage	12VDC	Rearder function	√
Static Current	≤80mA	Connect to card reader	√
Load current	≤1A	Distance of reading card	≥20mm
Ambient Temperature	- 30℃~60℃	Type of reading card	Mifare card
Relative Humidity	10%~90%RH	Dimension	105*86*18mm
Storage capacity	3000 MF cards & 3000 passwords (30000 customized)	Identify mode	Card / password / card + password / card+ card



BKZ-1108-ID



BKQ-1203-ID

Model	BKZ-1108-ID	BKQ-1203-ID
Working voltage	12VDC	12VDC
Static current	≤100mA	≤250mA
Load current	< 1A	< 1A
Storage capacity	2000 fingerprints,2000 passwords & 2000 ID cards	3000 fingerprints,3000 passwords & 3000 ID cards
Memory capacity	60000 pieces	80000 pieces
False acceptance rate	<0.001%	<0.001%
False rejection rate	<0.01%	<0.01%
Response speed	<0.5 seconds	<0.5 seconds
Identify mode	Fingerprint / password / ID card or combination	Fingerprint / password / ID card or combination
Rearder function	√	√
Data transmission	USB flash disk	USB flash disk
Communication mode	—	RS485, TCP/IP
Software	—	√
Dimension	216*85*38mm	216*85*38mm

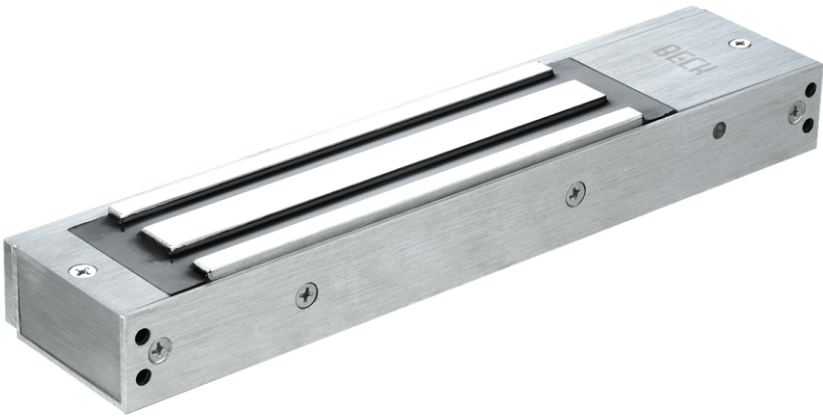


Q2009-C



Q2010-C

Type	Q2009-C	Q2010-C
Working voltage	12VDC	12VDC
Static current	< 50mA	< 60mA
Ambient temperature	- 20℃~60℃	- 20℃~60℃
Relative humidity	10%~90%RH	10%~90%RH
Storage capacity	1000 password & 1000 cards	1000 password & 1000 cards
Identify mode	Card / password / card + password	Card / password / card + password
Safety mode	√	—
Type of reading card	ID or EM Compatible card	ID or EM Compatible card
Master card function	—	√
Supper password function	√	√
Deploy defense and cancel	√	√
Dimension	110*100*21mm	118*118*21mm



DZ868A

- Collinear load test 350kg,800pounds.
- Anti-residual magnetism designed,tamper-proof.
- Anti-rust,salt spray test for 1000 hours.

Working voltage	12VDC or 24VDC
Operating current	0.45A / 0.225A
Operating temperature	- 25℃~60℃
Operating humidity	10%~90%RH
Door opening angle	90°
Security mode	Power on - locking Power off - unlocking
Holding force	350KG (772LBS)

Installation	Hanging
Time delay	0-30S customized
Signal output	Door status output
Surface treatment	Antirust chrome-faced
Door status indication	√
Applicability	Glass or timber or steel doors
Lock size	238*53*29mm



BCL-2501

- Waterproof:IP65.
- Anti-rust,salt spray test for 1000 hours.

Working voltage	12V DC	Holding force	300KG (662LBS)
Operating current	440mA	Door opening angle	90°
Operating temperature	- 30℃~55℃	Security mode	Power on - locking Power off - unlocking
Operating humidity	10%~95%RH	Suction plate size	150*46*13mm
Surface treatment	Antirust chrome-faced	Applicability	Glass door,wooden door,metal door
Lock size	228 *52*28mm		



DZ818A



DZ878A



DZ888A

Model	DZ818A	DZ878A	DZ888A
Working voltage	12V DC	12VDC or 24VDC	12VDC
Operating current	0.35A	0.45A/0.225A	0.45A
Operating temperature	- 25℃~60℃	- 25℃~60℃	- 25℃~60℃
Operating humidity	10%~90%RH	10%~90%RH	10%~90%RH
Security mode	Power on - locking Power off - unlocking	Power on - locking Power off - unlocking	Power on - locking Power off - unlocking
Holding force	180KG (397LBS)	500KG (1102LBS)	280KG (617LBS)
Door opening angle	90°	90°	90°
Surface treatment	Antirust chrome-faced	Antirust chrome-faced	Antirust chrome-faced
Installation	Hanging	Hanging	Hanging
Applicability	Glass or timber or steel doors	Glass or timber or steel doors	Glass or timber or steel doors
Lock size	174*40.5*23mm	267*73*42mm	222*53*29mm



DZ818B



DZ868B



DZ888B

Model	DZ818B	DZ868B	DZ888B
Working voltage	12V DC	12VDC or 24VDC	12VDC
Operating current	0.35A	0.45A/0.225A	0.45A
Operating temperature	-25℃~60℃	-25℃~60℃	-25℃~60℃
Operating humidity	10%~90%RH	10%~90%RH	10%~90%RH
Security mode	Power on - locking Power off - unlocking	Power on - locking Power off - unlocking	Power on - locking Power off - unlocking
Holding force	180KG (397LBS)	350KG (772LBS)	280KG (617LBS)
Door opening angle	90°	90°	90°
Surface treatment	Antirust chrome-faced	Antirust chrome-faced	Antirust chrome-faced
Installation	Flushbonading	Flushbonading	Flushbonading
Applicability	Sliding door	Sliding door	Sliding door
Lock size	207*35.5*23mm	269*48*29mm	261*48*29mm



DZ818C



DZ868C



DZ878C



DZ888C

Model	DZ818C	DZ868C	DZ878C	DZ888C
Working voltage	12V DC	12V/DC or 24V/DC	12V/DC or 24V/DC	12V/DC
Operating current	0.35A×2	0.45A×2/0.225A×2	0.45A×2/0.225A×2	0.45A×2
Lock mode	Power off unlocked	Power off unlocked	Power off unlocked	Power off unlocked
Holding force	180KG×2 (794LBS)	350KG×2 (1543LBS)	500KG×2(2204LBS)	280KG×2 (1235LBS)
Open angel	90°	90°	90°	90°
Applicability	Glass or timber or steel doors	Glass or timber or steel doors	Glass or timber or steel doors	Glass or timber or steel doors
Surface treatment	Antirust chrome-faced	Antirust chrome-faced	Antirust chrome-faced	Antirust chrome-faced
Time delay	—	0-30S customized	0-30S customized	Customized
Door signal output	Customized	√	√	—
Intelligent tension test	—	√	—	—
High-level signal operate	—	Customized	Customized	—
Lock size	348*41*23mm	476*53*29mm	534*73*42mm	444*53*29mm



BCL-2505



BCL-2505-D



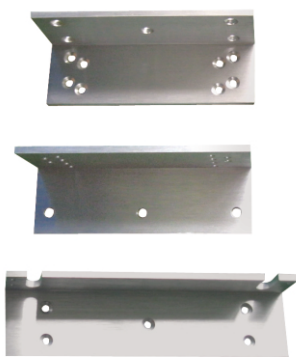
BCL-2508-A



BCL-2508-B

Model	BCL-2505	BCL-2505-D
Working voltage	12VDC	12VDC
Operating current	440mA	880mA
Operating temperature	- 30℃~55℃	- 30℃~55℃
Operating humidity	10%~95%RH	10%~95%RH
Holding force	280KG (617LBS)	280KG*2 (1235LBS)
Surface treatment	Antirust chrome-faced	Antirust chrome-faced
Security mode	Power on - locking Power off - unlocking	Power on - locking Power off - unlocking
Door opening angle	90°	90°
Applicability	Glass door,wooden door,metal door	Glass door,wooden door,metal door
Suction plate size	150*46*13mm	150*46*13mm
Lock size	212*53*30mm	424*53*30mm

Model	BCL-2508-A	BCL-2508-B
Working voltage	12VDC	12VDC
Operating current	440mA	880mA
Operating temperature	- 10℃~55℃	- 10℃~55℃
Operating humidity	10%~95%RH	10%~95%RH
Holding force	60KG (120LBS)	60KG (120LBS)
Security mode	Power on - locking Power off - unlocking	Power on - locking Power off - unlocking
Applicability	File cabinet,display cabinet	File cabinet,display cabinet
Suction plate size	80*33*9.5mm	75*32*10mm
Lock size	80*39*24.5mm	115*35*20mm



L bracket



U bracket



UPS123A



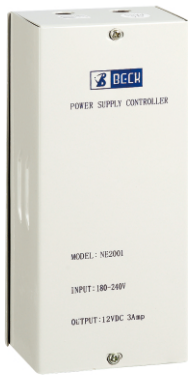
UPS123B



UPS125A

Model	L bracket	U bracket
Door opening angle	90°	/
Applicability	Wooden door, iron gate	No frame glass door bracket
Installation	Indoor installation	Glass door
Material	Aluminium alloy	Aluminium alloy
Surface treatment	Drawing oxidation	Drawing oxidation
Dimension(DZ878)	267*46*73mm	185*28*60mm
Dimension(DZ868)	238*32*54mm	185*28*46mm
Dimension(DZ818)	174*27*41.5mm	125*28*46mm
Dimension(DZ888)	222*32*54mm	150*28*46mm
Dimension(BCL-2501)	208*32*54mm	150*28*46mm
Dimension(BCL-2505)	208*32*54mm	150*28*46mm

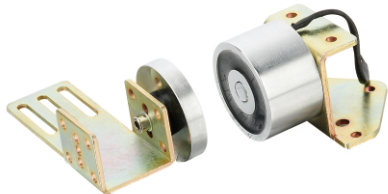
Model	UPS123A	UPS123B	UPS125A
Input voltage	110V~240V AC	180V~240V AC	110 ~240VAC
Output voltage	12V DC	12V DC	12VDC
Output current	3A	2A	5A (max)
Operating temperature	—25~60℃	—25~60℃	—25~60℃
Operating humidity	10%~90%RH	10%~90%RH	10%~90%RH
Storage battery	12V 7A/H	12V 4A/H	12V 7AH
Time adjustable	0~60S	0~60S	0~60S
Type of work	High frequency switching power	Power frequency voltage apparatus	High frequency switching power
Short-circuit protection	√ (yes)	√ (yes)	√ (yes)
NC/NO output	√ (yes)	√ (yes)	√ (yes)
Size	200*164*77mm	201*165*79mm	200*162*76mm



NE2001



NE2001-NB



DZ808A



DZ828A



DZ828B

•Low consumption,stable quality,low repair rate,protect door and walls.

Model	NE2001	RD2001-NB
Input voltage	180V~240V AC	110~240VAC
Output voltage	12V DC	12VDC
Output current	3A	3A
Operating temperature	-25~60℃	-25~60℃
Operating humidity	10%~90%RH	10%~90%RH
Storage battery	—	—
Time adjustable	0~60S	0~60S
Type of work	—	High frequency power supply
Short-circuit protection	—	√
NC/NO output	√	√
Size	181*82*63mm	145*60*42mm

Model	DZ808A	DZ828A	DZ828B
Working voltage	12VDC / 24VDC (Customized)	12VDC / 24VDC	12VDC / 24VDC
Operating current	0.18A/0.09A(Customized)	0.18A/0.09A	0.18A/0.09A
Operating temperature	—25~60℃	—25~60℃	—25~60℃
Operating humidity	10%~90%RH	10%~90%RH	10%~90%RH
Holding force	60KG (120LBS)	60KG (120LBS)	60KG (120LBS)
Installation	On wall or ground	On wall	On ground
Surface treatment	Antirust chrome-faced	Antirust chrome-faced	Antirust chrome-faced
Fire-fighting joint control	√	√	√
Door signal output	Customized	Customized	Customized
Urgent interrupt button	—	√	√
Applicability	Fireproof door,auto-door	Fireproof door,auto-door	Fireproof door,auto-door
Suction plate size	110*55*50mm	65*65*43mm	65*65*43mm
Body size	65*70*78mm	65*65*117mm	65*65*117mm



BKQ-1201-A



BKQ-1201-B



BKQ-1201-C

They are the most powerful and advanced access controller in domestic and overseas market . They need to work with electric locks ,power supply ,card reader ,and door exit button . They are widely used in swimming pool ,office house ,workshop ,school,etc .

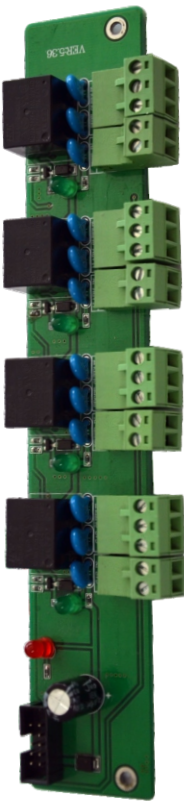


BFK-6501-ID
BFK-6501-MF

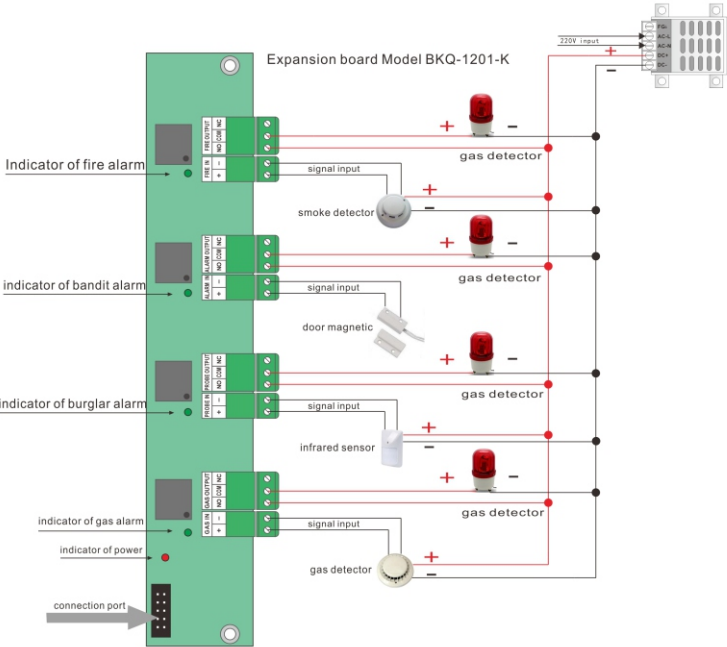
Model	BFK-6501
Working voltage	5VDC(USB connects)
Quiescent current	ID :125MHZ MF:13.56MHZ
Load current	- 10~55℃
Operating frequency	10%~90%RH
Capacity	ID :1-150mm MF :1-100mm
Encode mode	Reading,Writing,coding
Key number	ID /MFI S50/S70
Controller state	Used with BKQ-1201 and BKQ-1202 access controller
Dimension	110*82*27mm

Model	BKQ-1201-A	BKQ-1201-B	BKQ-1201-C
Working voltahe	9~12VDC		
Working current	90mA	100mA	120mA
Dota storage	52000 card capacity/capacity of 200000 records		
Communication mode	RS485、TCP/IP、wan		
Transmission speed	RS485 upload 38 group of personnel data per second , collecting 125 records. TCP/IP per upload 255 groups of personnel data per second , collecting 1300 records		
Communication interface	1 network interface, 2 RS485 interface		
Card reading interface protocols	International standard weigand 26 bit / 34 bit communication protocol (can set in software, the factory default is 26 bit)		
Card reader interface	2 (support inside and outside)	4 (support inside and outside)	8 (support inside and outside)
Door lock relay	1 set	2 set	4 set
Expansion board interface	Fire alarm, police bandit alarm, anti-theft alarm, gas alarm each a set		
Other input interface	Each door provide a set of switch interface, 1 set of door magnetic interface and a magnetic door alarm output interface		
Maximum communication distance	RS485: 600meters TCP/IP□100meters		
Networking capability	RS485: 64 TCP/IP□255 Wan: unlimited		
Card reader communication distance	≤100meters		
Prompt volume	≥80db		
Size	360*260*83mm		

Expansion board Model BKQ-1201-K is widely used for BKQ-1201/BKQ-1202 networking access controller ,support fire alarm ,bandit alarm ,gas alarm and burglar alarm ,contribute to the stability and security of access controller system .



BKQ-1201-K





BDT-1510-MF



BDT-1511-MF

- Metal,durable.
- Waterproof:IP65.
- Touch screen,quick in operation.
- Door bell signal output.

Model	BDT-1510-MF
Working voltage	9~15VDC
Operating current	≤100mA
Operating temperature	-25℃ ~ 60℃
Operating humidity	10%~90%RH
Operating frequency	13.56MHz±1KHz
Detection distance	≤80ms
Response time	20ms
Data transmission	≤100M
Material	Zinc alloy
Output format	Standard wiegand 26/34
Applicability	Work with access controller
Waterproof	IP65
Dimension	130*56*18mm

Model	BDT-1511-MF
Working voltage	9~15VDC
Operating current	≤100mA
Operating temperature	-25℃ ~ 60℃
Operating humidity	10%~90%RH
Operating frequency	13.56MHz±1KHz
Detection distance	≤80ms
Response time	20ms
Data transmission	≤100M
Material	Zinc alloy
Output format	Standard wiegand 26/34
Applicability	Work with access controller
Waterproof	IP65
Dimension	105*86*18mm



BDT-1507-ID
BDT-1507-MF



BDT-1508-ID
BDT-1508-MF



BDT-1509-ID
BDT-1509-MF

Model	BDT-1507-ID/MF	BDT-1508-ID/MF	BDT-1509-ID/MF
Working voltage	9~15VDC	9~15VDC	9~15VDC
Operating current	≤60mA	≤60mA	≤60mA
Operating temperature	-20℃ ~ 60℃	-20℃ ~ 60℃	-20℃ ~ 60℃
Operating humidity	10%~90%RH	10%~90%RH	10%~90%RH
Detection distance	≤120mm(ID) ≤80mm(MF)	≤120mm(ID) ≤80mm(MF)	≤120mm(ID) ≤80mm(MF)
Response time	≤120ms	≤120ms	≤120ms
Data transmission	≤100M	≤100M	≤100M
Operating frequency	125K±1KHz (ID card) 13.56MHz±1KHz (MF card)	125K±1KHz (ID card) 13.56MHz±1KHz (MF card)	125K±1KHz (ID card) 13.56MHz±1KHz (MF card)
Material	ABS	ABS	ABS
Output format	Standard wiegand 26	Standard wiegand 26	Standard wiegand 26
Applicability	Work with access controller	Work with access controller	Work with access controller
Product process	Epoxy resin filling & sealing	Epoxy resin filling & sealing	Epoxy resin filling & sealing
Waterproof	IP65	IP65	IP65
Anti-burst of pulses	3 degree	4 degree	3 degree
Dimension	86*86*18mm	86*86*18mm	100*48*18mm



DE-02



DE-04



DE-05

Model	DE-02	DE-04	DE-05
Working voltage	≤36VDC	≤36VDC	≤36VDC
Working current	1A	1A	1A
Working temperature	−30~60℃	−30~60℃	−30~60℃
Humidity	10%~90%RH	10%~90%RH	10%~90%RH
Switch type	Normally open	Normally open	Normally open
Material	Stainless	Stainless	Stainless
Durability	550000 times	550000 times	550000 times
Applicability	Access controller	Access controller	Access controller
Dimension	119.5*39.5*34mm	86*86*38mm	86.5*86.5*29.5mm



RD-85W



RD-603B

Door closer is installed at the top of the door leaf , applicable to wooden door、 steel door and fire door.

Model	RD-85W	RD-603B
Door weight	85-120kg	65-85kg
Maximum frame	1250mm	1100mm
Working temperature	−25~60℃	−25~60℃
Humidity	10%~90%RH	10%~90%RH
Opening angle	180°	180°
Surface color	Silver, bronze	Silver, bronze
Material	Aluminium alloy	Aluminium alloy
Design standard	American UL	American UL
Closed strength grade	Fixed 5 force	Fixed 3 force
Dimension	210mm*41mm*65mm	195mm*35mm*60mm



X1

- Anti-cope fingerprint,high security.
- LCD display,voice prompt.
- Suitable for burglar-proof doors.

Model	X1
Working voltage	6VC
Operating current	200mA
Static current	45uA
Operating temperature	-20℃ ~ 60℃
Operating humidity	10%~90%RH
Storage capacity	10 passwords, 200 fingerprints
Fingerprint sensor	Semiconductor
Fingerprint image resolution	500dpi
Fingerprint acquisition time	<1S
False accept rate	<0.001%
Time delay	5S
Low voltage alarm	<4.2V
Unlocking ways	Fingerprint, password, override key



C2

- Anti-cope fingerprint,high security.
- OLED display,voice prompt.
- Human induction alarm.

Model	C2
Working voltage	6VC
Operating current	200mA
Static current	45uA
Operating temperature	-20℃ ~ 60℃
Operating humidity	10%~90%RH
Storage capacity	10 passwords, 200 fingerprints
Fingerprint sensor	Semiconductor
Fingerprint image resolution	500dpi
Fingerprint acquisition time	<1S
False accept rate	<0.001%
Time delay	5S
Low voltage alarm	<4.2V
Unlocking ways	Fingerprint, password, override key or combination



X2



X5



C1

Model	X2	X5	C1
Working voltage	6VC	6VC	6VC
Operating current	200mA	200mA	200mA
Static current	45uA	45uA	45uA
Operating temperature	-20℃ ~ 60℃	-20℃ ~ 60℃	-20℃ ~ 60℃
Operating humidity	10%~90%RH	10%~90%RH	10%~90%RH
Fingerprint image resolution	500dpi	500dpi	500dpi
Fingerprint sensor	Optical	Optical	Semiconductor
Storage capacity	10 passwords, 200 fingerprints	10 passwords, 200 fingerprints	10 passwords, 200 fingerprints
Fingerprint acquisition time	<1S	<1S	<1S
False accept rate	<0.001%	<0.001%	<0.001%
Time delay	5S	5S	5S
Low voltage alarm	<4.2V	<4.2V	<4.2V
Ways to unlock	Fingerprint,password, override key	Fingerprint,password, override key	Fingerprint,password, override key or combination



BYK-5701-A

Model	BYK-5701-A
Working voltage	12VDC
Static current	≤20mA
Working current	10A
Working temperature	- 25℃~60℃
Humidity	10%~90%RH
Operating frequency	315MHZ
Capacity	80
Encode mode	Learning code
Key number	1000000
Remote distance	≤65m
Dimension	75*55*28mm



HX90

Model	HX90	HX91
Dimension	300 × 13mm	300 × 13mm
Application	Wire protection	Wire protection
Standard structure	Alloy materail, thickened ripple tube	Alloy materail, thickened ripple tube



HX91



MF CARD



MF KEY CARD



ID CARD



ID KEY CARD

Model	MF CARD	MF KEY CARD
Chip	FM11RF08	FM11RF08
Capacity	8Kbits/16division/2 codes for every division	8Kbits/16division/2 codes for every division
Operating frequency	13.56KHZ	13.56KHZ
Communication speed	106Kboud	106Kboud
Opearttng Distance	20-100mm	20-100mm
Erase life	>100000times	>100000times
Data storage	>10 years	>10 years
Encapsulating material	PVC/PET	PVC/PET
Making standard	ISO 14443,ISO 10536	ISO 14443,ISO 10536
Applicability	Access control system	Access control system
Dimension	85.5mm*54mm*0.8mm	29*6mm thickness

Model	ID CARD	ID KEY CARD
Chip	TK4100	TK4100
Capacity	64bits	64bits
Operating frequency	125KHZ	13.56KHZ
Communication speed	3.9kbps	3.9kbps
Opearttng Distance	30-150mm	20-100mm
Erase life	10 years	10 years
Encapsulating material	PVC/ABS	PVC/ABS
Applicability	Access control system	Access control system
Dimension	85.5mm*54mm*1.8mm	29*6mm thickness